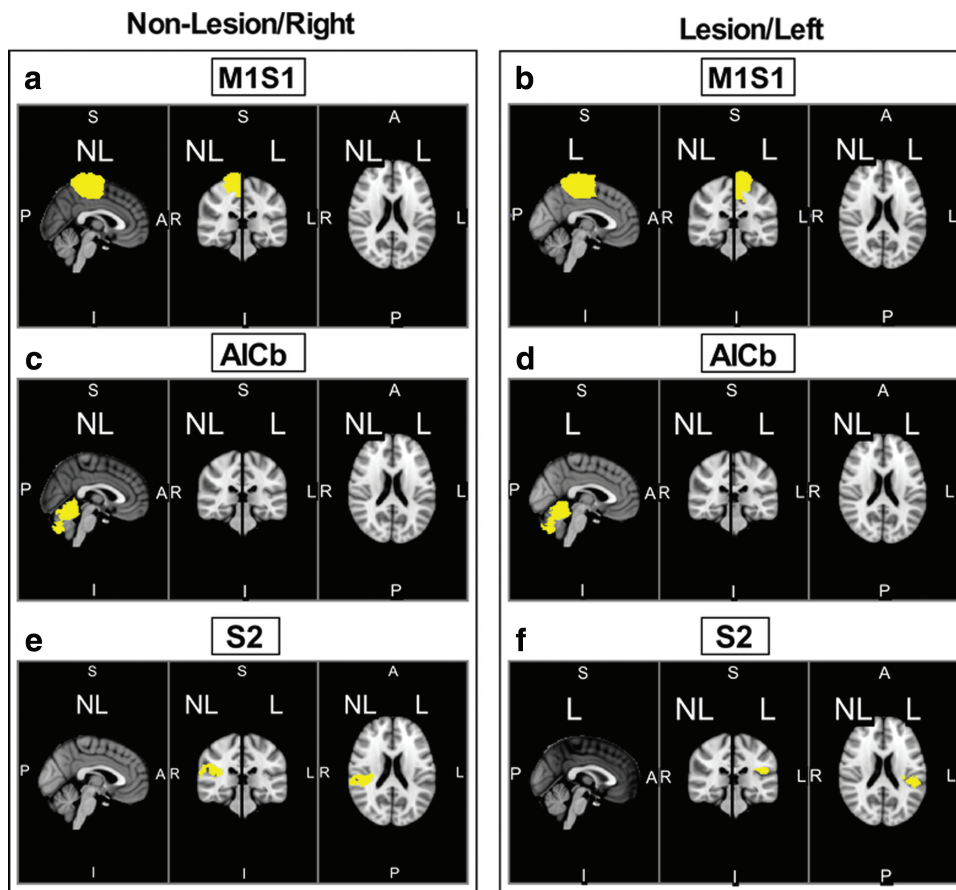


Supplementary Data



SUPPLEMENTARY FIG. S1. Task ROIs. Diagram of six task ROIs: M1S1 (a, b); AICb (c, d); S2 (e, f). The voxels comprising each ROI are shown in yellow on the Montreal Neurological Institute brain. The coordinates are $Y = -30$ mm, $Z = 20$ mm, and $X = -2$ mm (left) or $X = 2$ mm (right). AICb, anterior lobe of cerebellum; L, lesioned; M1S1, primary sensorimotor cortex; NL, non-lesioned; ROIs, regions of interest; S2, secondary sensory cortex.