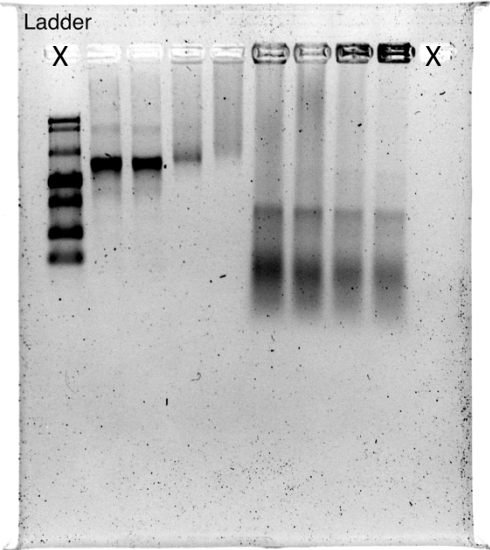
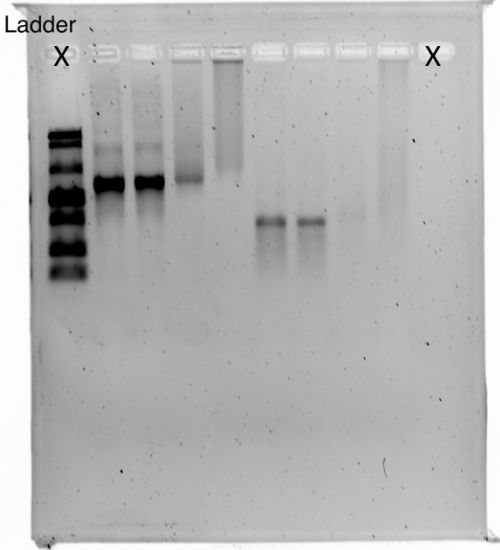


The following correspond to raw images obtained from gels in Fig. 3.

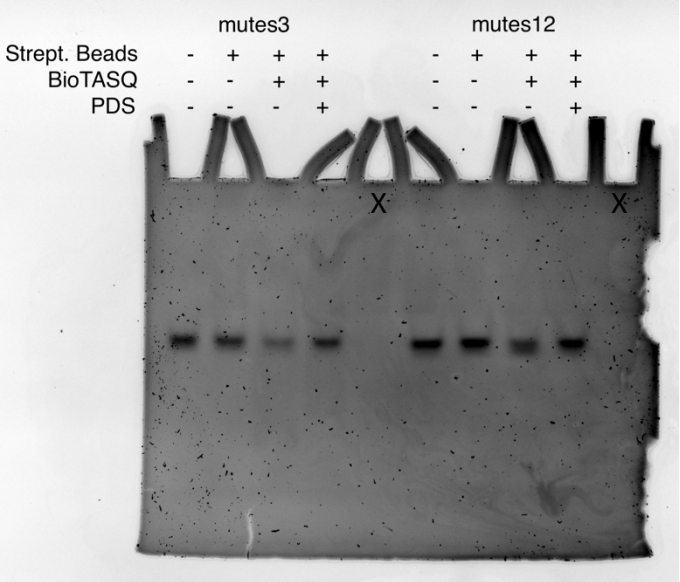
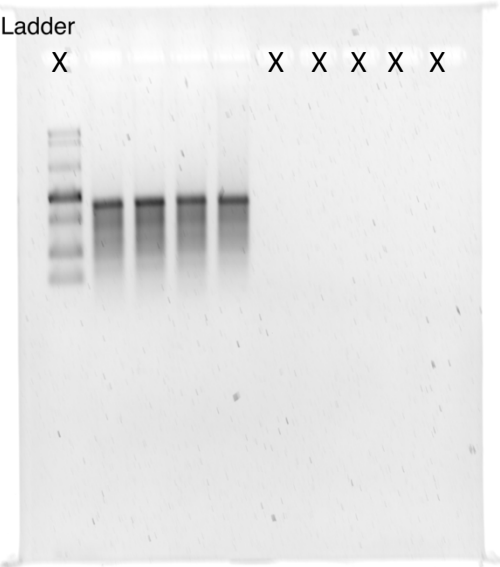
	Human 28S				E. coli 16S			
Strept. Beads	-	+	+	+	-	+	+	+
BioTASQ	-	-	+	+	-	-	+	+
PDS	-	-	-	+	-	-	-	+

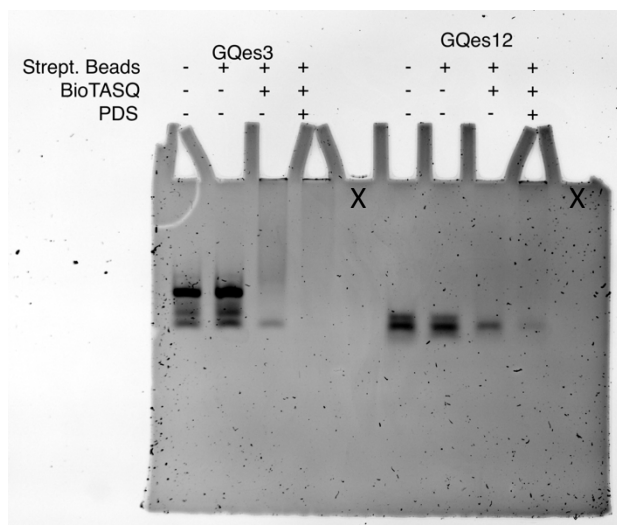


	Human 28S				Human 18S			
Strept. Beads	-	+	+	+	-	+	+	+
BioTASQ	-	-	+	+	-	-	+	+
PDS	-	-	-	+	-	-	-	+

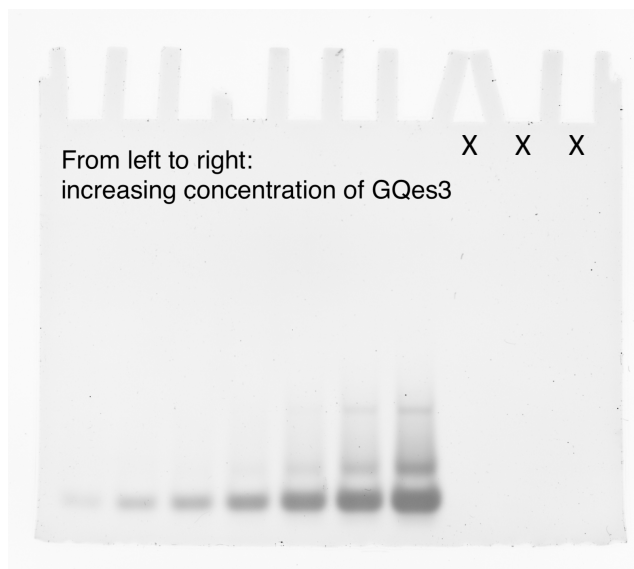


	T. thermophilus 23S			
Strept. Beads	-	+	+	+
BioTASQ	-	-	+	+
PDS	-	-	-	+





The following correspond to the raw image obtained from gel in Fig. S.6



All images were taken with Azure Imager c400 (Azure Biosystems). An X above gel lanes is used to indicate lanes that were not used in the final cropped image that appears in the article.