

## SUPPLEMENTARY INFORMATION

---

### **Interaction of melatonin and Bmal1 in the regulation of PI3K/AKT pathway components and cellular survival**

Mustafa C. Beker<sup>1,2</sup>, Berrak Caglayan<sup>1,3</sup>, Ahmet B. Caglayan<sup>1,2</sup>, Taha Kelestemur<sup>1,2</sup>, Esra Yalcin<sup>1,2</sup>,  
Aysun Caglayan<sup>1,2</sup>, Ulkan Kilic<sup>4</sup>, Ahmet T. Baykal<sup>1,5</sup>, Russel J. Reiter<sup>6</sup>, Ertugrul Kilic<sup>1,2</sup>

<sup>1</sup>Regenerative and Restorative Medical Research Center, Istanbul Medipol University, 34810, Istanbul, Turkey; <sup>2</sup>Department of Physiology, Istanbul Medipol University, 34810, Istanbul, Turkey; <sup>3</sup>Department of Medical Biology, Istanbul Medipol University, 34810, Istanbul, Turkey; <sup>4</sup>Department of Medical Biology, Faculty of Medicine, Saglik Bilimleri University, 34668, Istanbul, Turkey; <sup>5</sup>Department of Medical Biochemistry, Acibadem University, 34752, Istanbul, Turkey; <sup>6</sup>Department of Cell Systems and Anatomy, UT Health San Antonio, 78229, Texas, USA

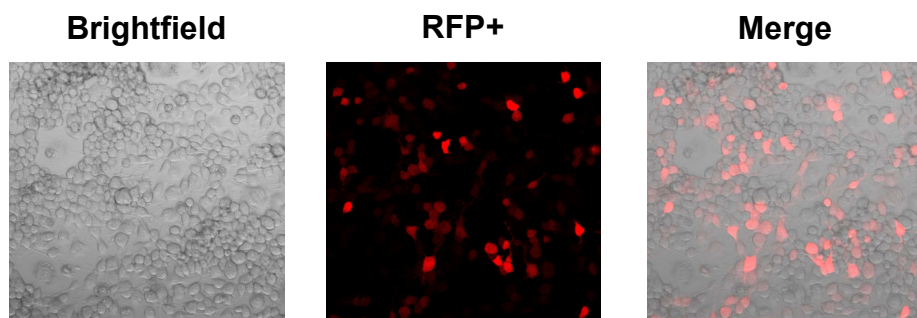
Running title: Role of Bmal1 in cell signaling and survival

Correspondence: Prof. Dr. Ertugrul Kilic

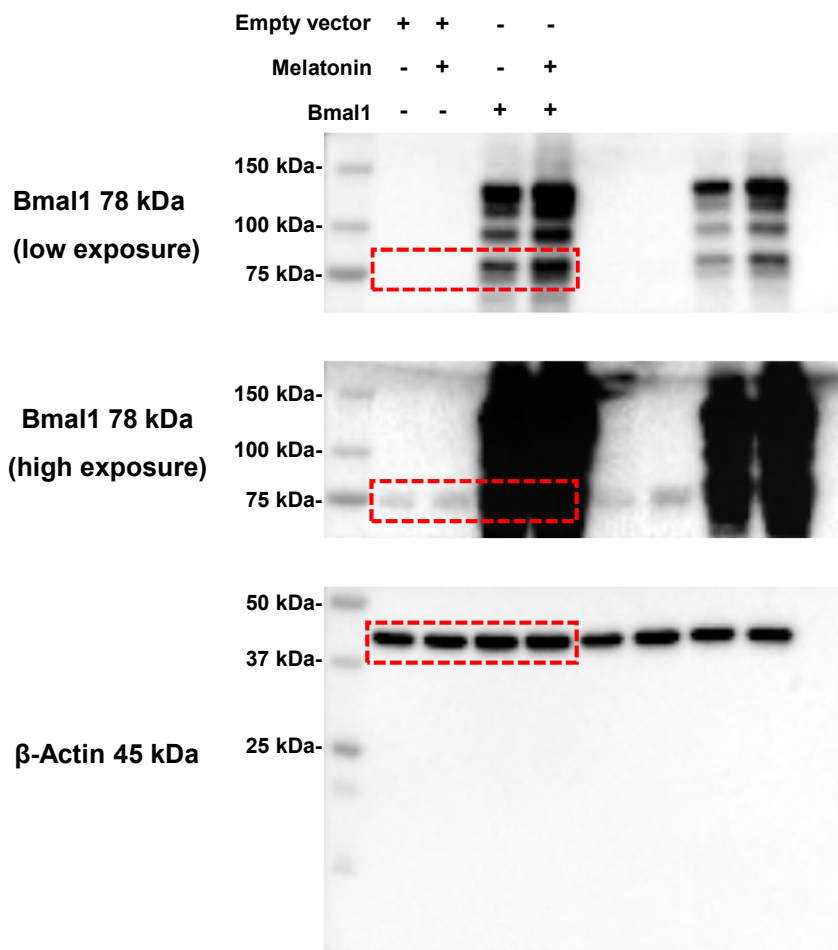
Department of Physiology, Istanbul Medipol University  
Regenerative and Restorative Medical Research Center  
Ekinciler Cad. 19, TR-34810 Istanbul, Turkey

Phone: +90-216-681 5344; Fax: +90-212-531 7555

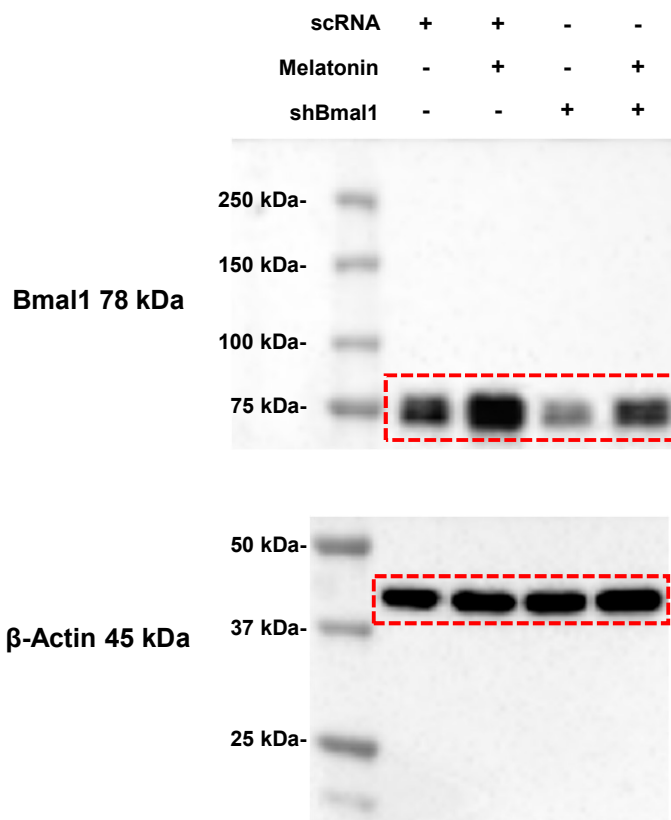
E-mail: [ekilic@medipol.edu.tr](mailto:ekilic@medipol.edu.tr); [kilic44@yahoo.com](mailto:kilic44@yahoo.com)



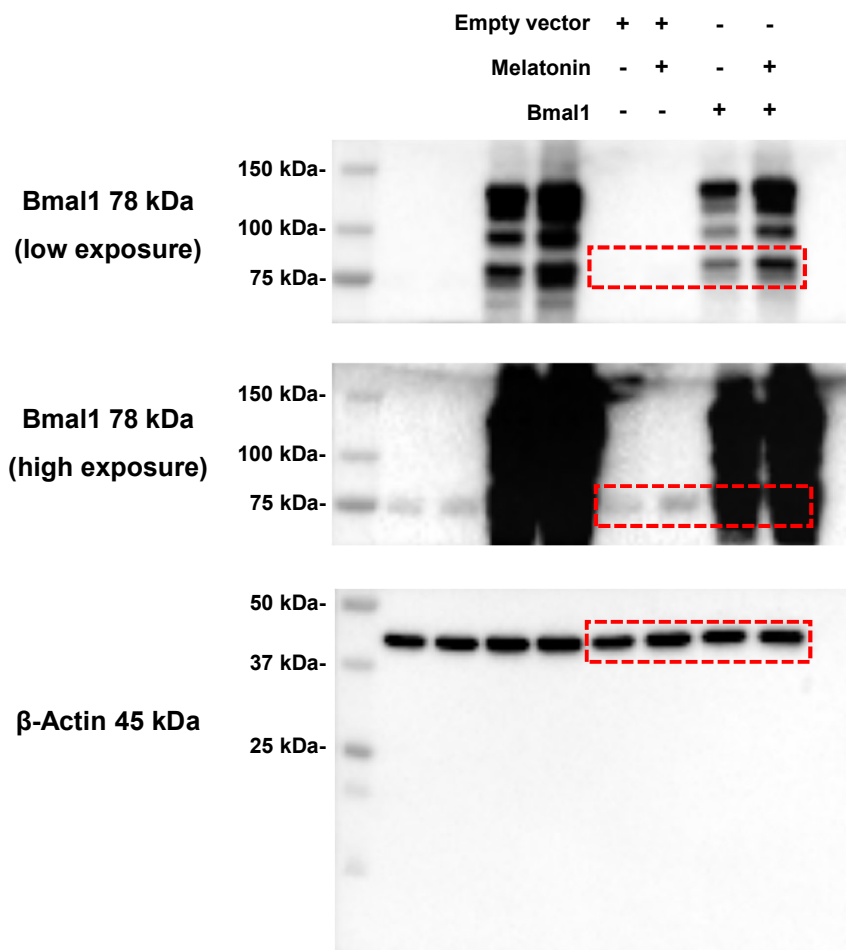
**Fig. S1. Transfection efficiency of Bmal1.**



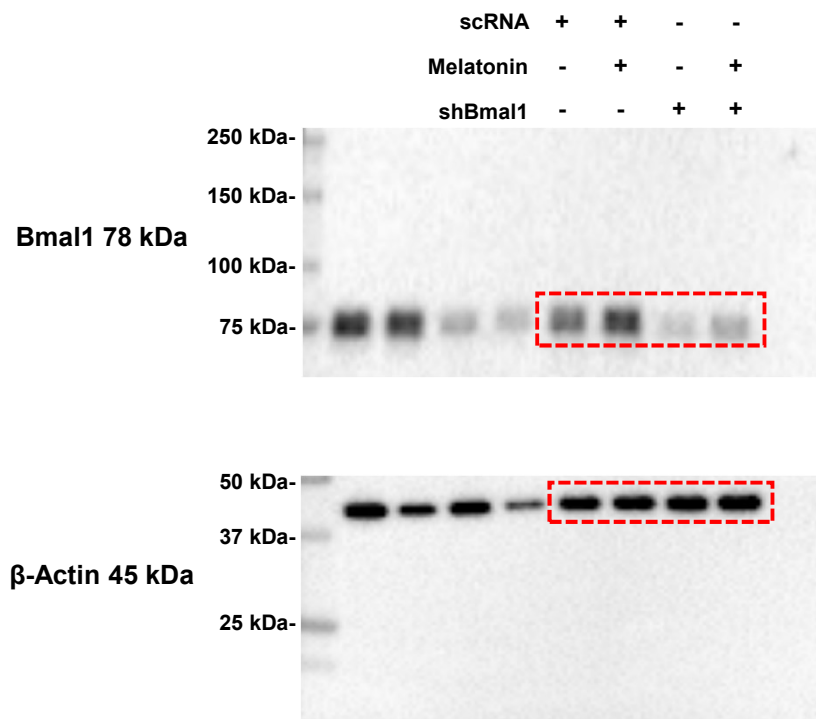
**Fig. S2. Full immunoblots related to Figure 1a.** These immunoblots are representative of three independent experiments. Results shown in Fig.1a are delineated by dotted rectangles. MW (in kDa) are indicated.



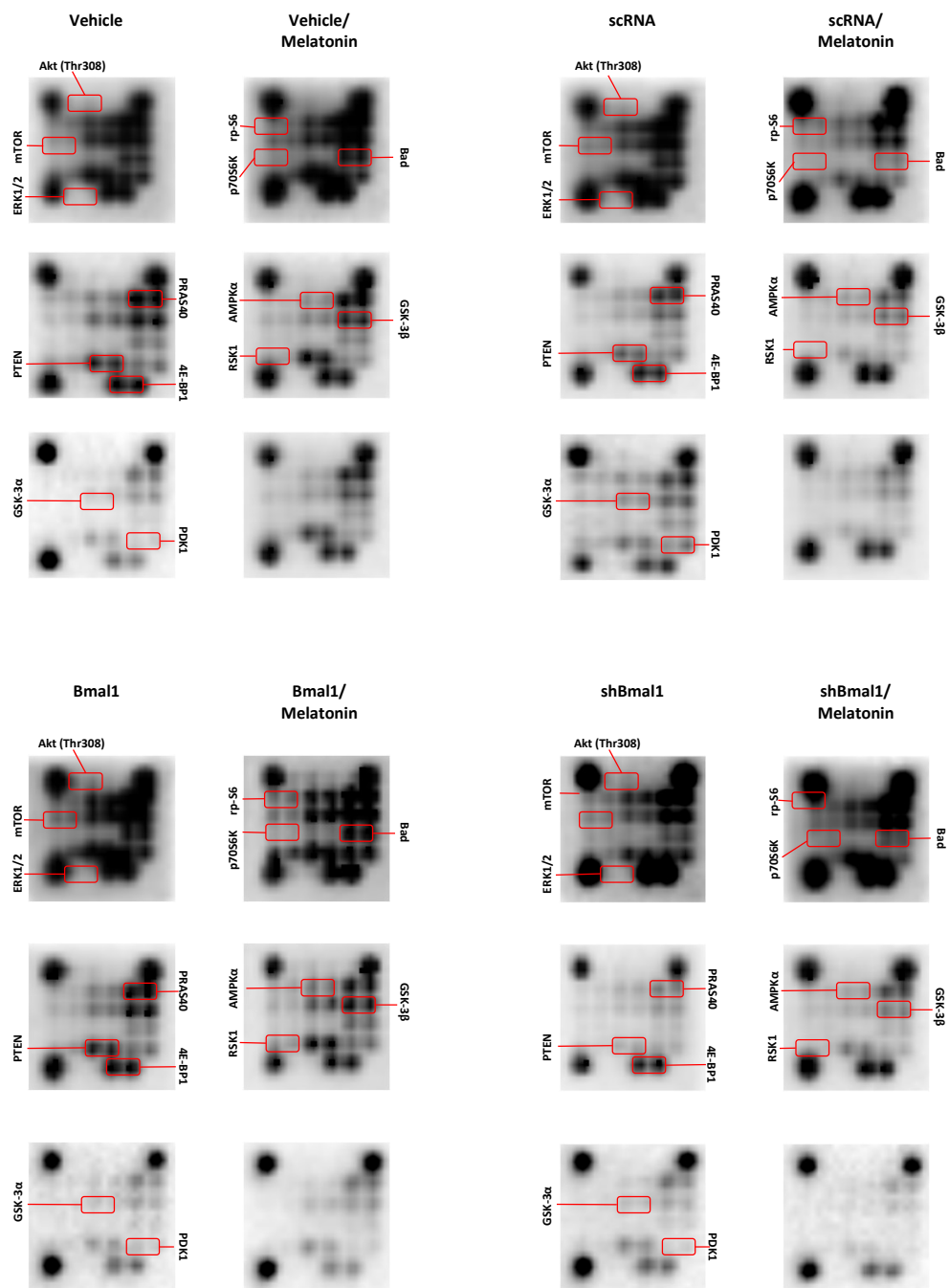
**Fig. S3. Full immunoblots related to Figure 1b.** These immunoblots are representative of three independent experiments. Results shown in Fig.1b are delineated by dotted rectangles. MW (in kDa) are indicated.



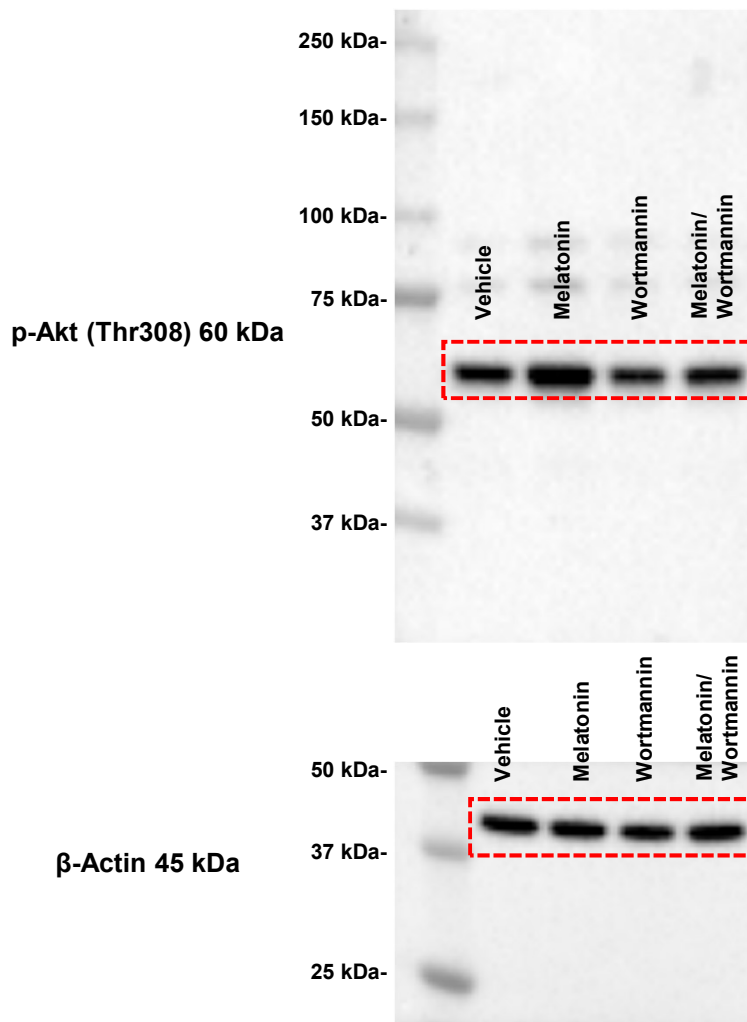
**Fig. S4. Full immunoblots related to Figure 1c.** These immunoblots are representative of three independent experiments. Results shown in Fig.1c are delineated by dotted rectangles. MW (in kDa) are indicated.



**Fig. S5. Full immunoblots related to Figure 1d.** These immunoblots are representative of three independent experiments. Results shown in Fig.1d are delineated by dotted rectangles. MW (in kDa) are indicated.

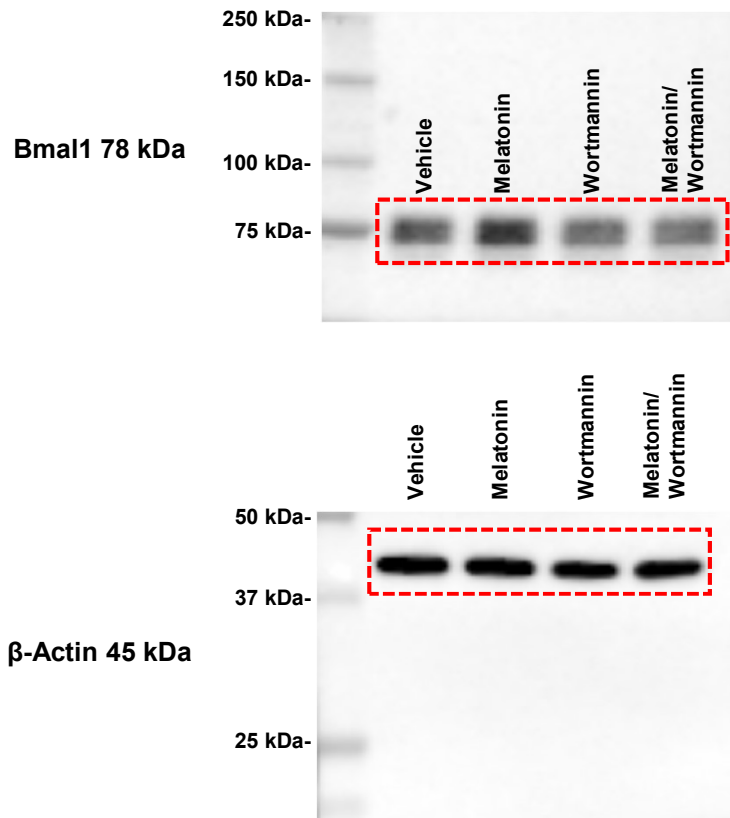


**Fig. S6.** Full immunoblots related to Figure 2. Results shown in Fig. 2a and Fig. 2b.

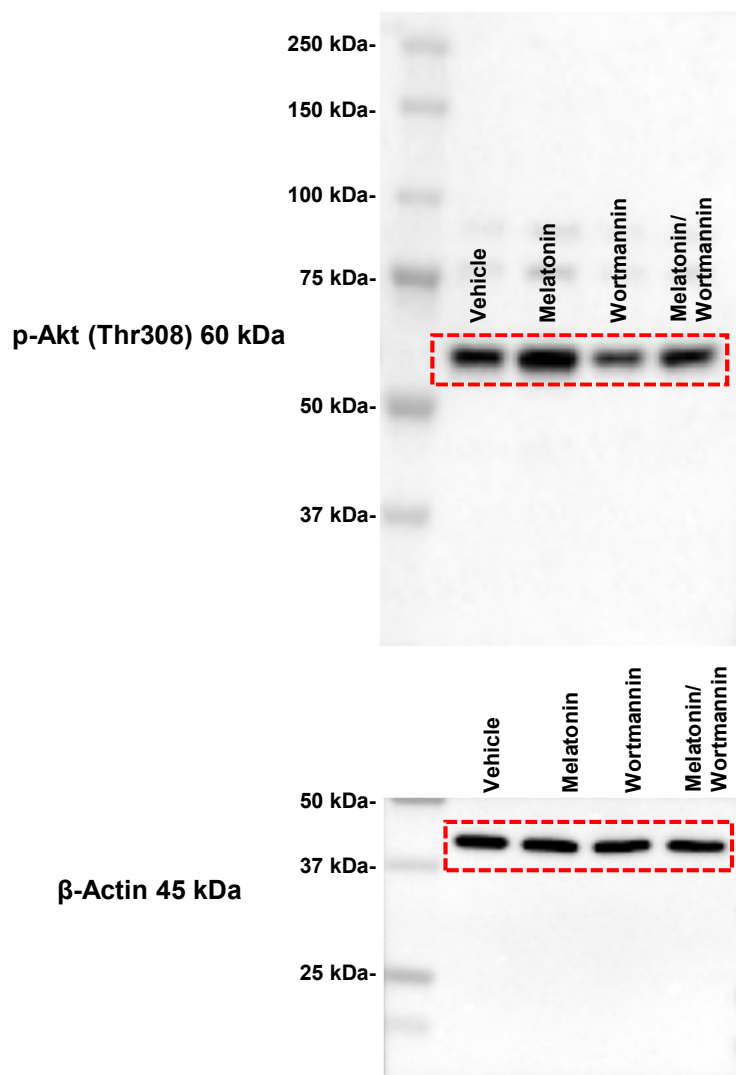


**Fig. S7. Full immunoblots related to Figure 6b.** These immunoblots are representative of three independent experiments. Results shown in Fig.6b are delineated by dotted rectangles. MW (in kDa) are indicated.

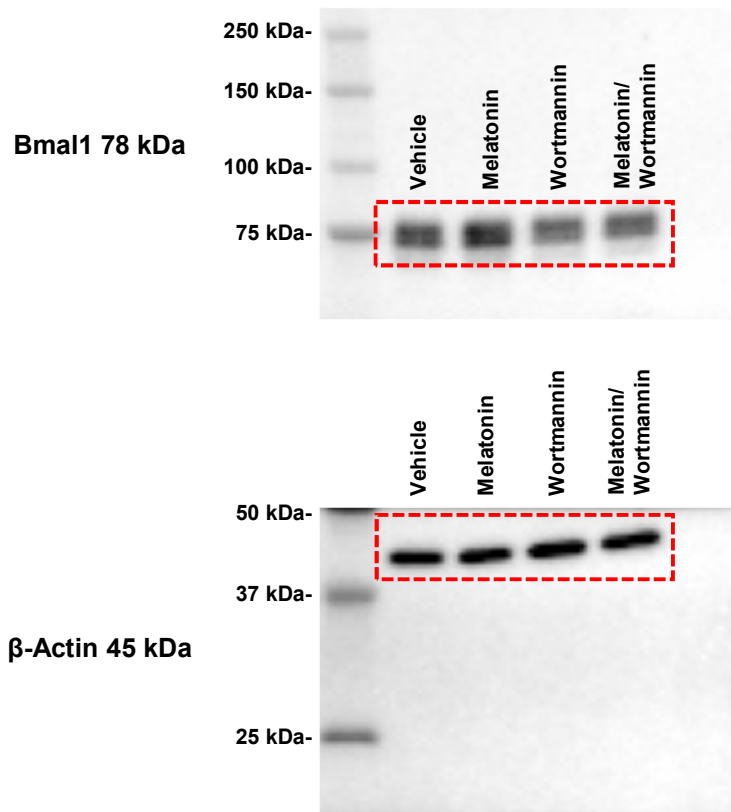




**Fig. S8. Full immunoblots related to Figure 6c.** These immunoblots are representative of three independent experiments. Results shown in Fig.6c are delineated by dotted rectangles. MW (in kDa) are indicated.



**Fig. S9. Full immunoblots related to Figure 8a.** These immunoblots are representative of three independent experiments. Results shown in Fig.8b are delineated by dotted rectangles. MW (in kDa) are indicated.



**Fig. S10. Full immunoblots related to Figure 8b.** These immunoblots are representative of three independent experiments. Results shown in Fig.8a are delineated by dotted rectangles. MW (in kDa) are indicated.