

**Expression of XBP1s in peritoneal mesothelial cells is critical for
inflammation-induced peritoneal fibrosis**

An Liu^{a,1}, Qiong Song^{b,1}, Yong Zheng^{c,1}, Guoshuang Xu^{c*}, Chen Huang^c, Shiren Sun^c,
Lijie He^c, Lijuan Zhao^c, Meilan Zhou^c

^aOutpatient Department, Xi'an Children's Hospital, Xi'an 710043 China

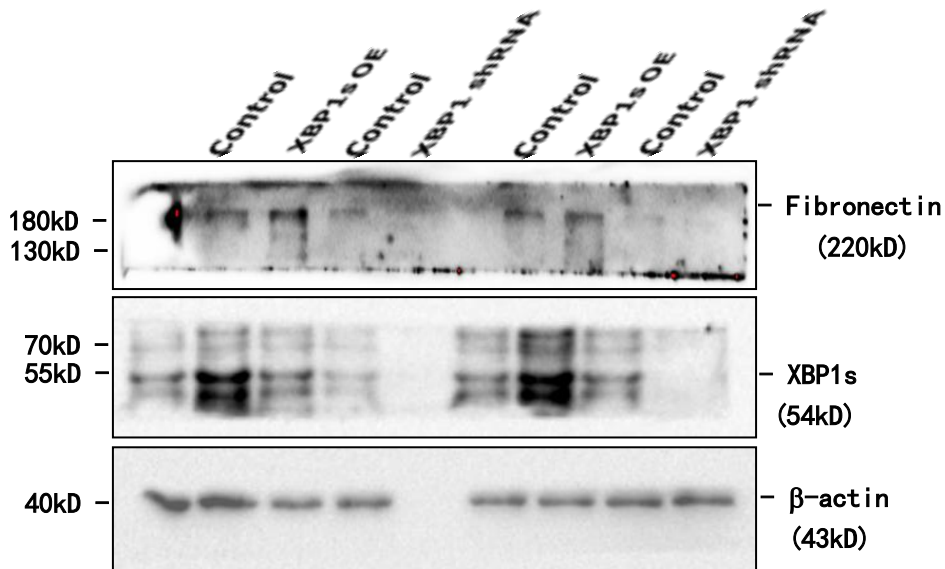
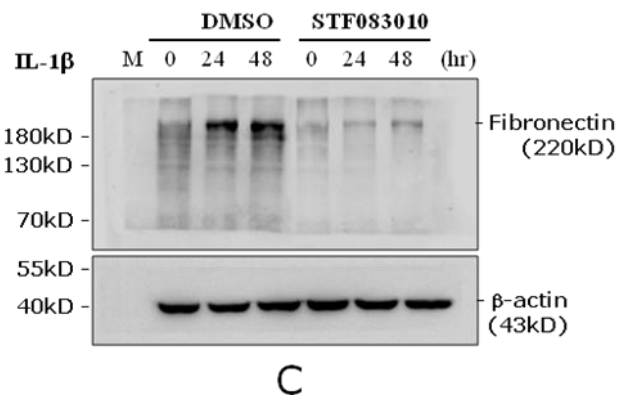
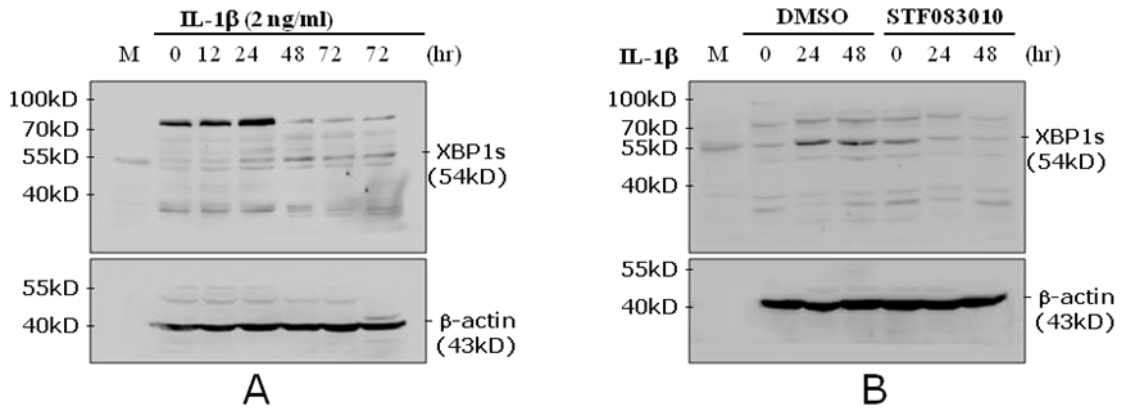
^bDepartment of Nephrology, Shaanxi Second People's Hospital, Xi'an 710005 China

^cDepartment of Nephrology, Xijing Hospital, The Fourth Military Medical University
of People's Liberation Army, Xi'an 710032 China

¹ These authors contributed equally to this work.

*Correspondence to:

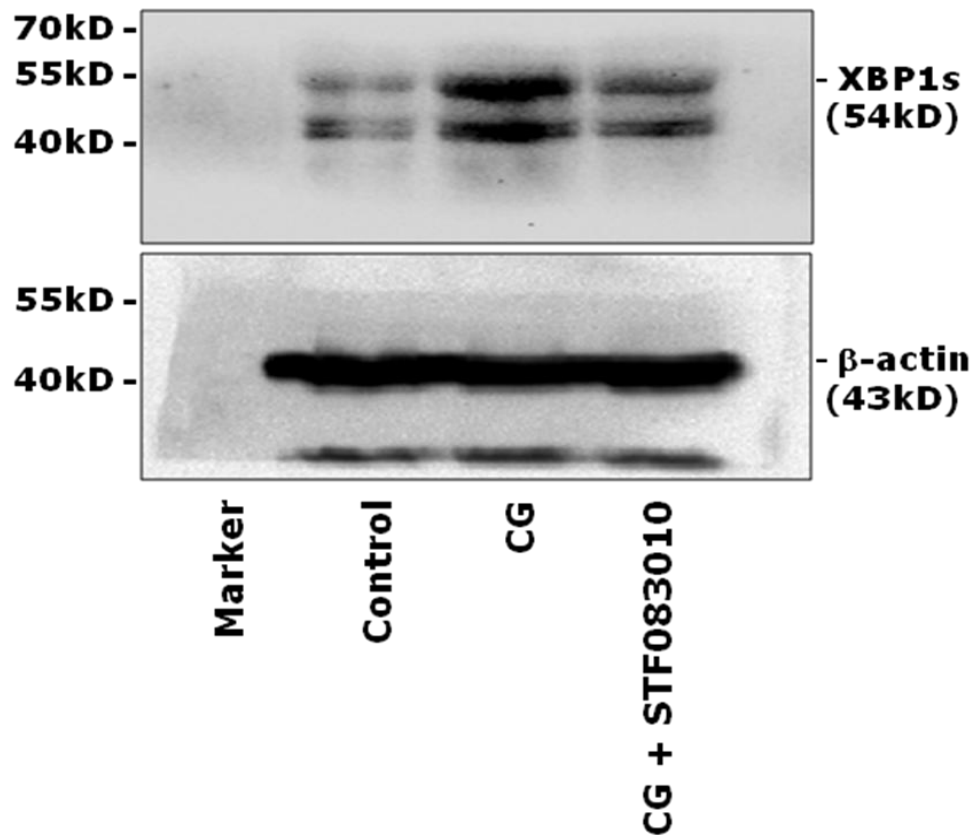
Dr. Guoshuang Xu, Department of Nephrology, Xijing Hospital, The Fourth Military
Medical University of People's Liberation Army, No.127, Changle West Road, Xi'an 710032,
China. E-mail: xugsh882003@aliyun.com Telephone number: 86-18602916264



Supplementary Figure 1. IL-1 β induced XBP1s and fibronectin expression (the full-length blots for Figure 1C, Figure 2A, 2C and 2D).

(A) The full-length blot for Figure 1C. The XBP1s was detected from the

full-length blot, while the β -actin detection was from a different part of the same blot (after detection of XBP1s, the blot was cropped between 70 kD and 55 kD, and β -actin was detected from the lower blot). (B) The full-length blots for Figure 2A. The XBP1s was detected from the full-length blot, while the β -actin detection was from a different part of the same blot (after detection of XBP1s, the blot was cropped between 70 kD and 55 kD, and β -actin was detected from the lower blot). (C) The full-length blot for Figure 2C. The fibronectin and β -actin were detected from different parts of the same blot (the blot was cropped between 70 kD and 55 kD, then fibronectin was detected from the upper blot and β -actin was detected from the lower blot). (D) The full-length blot for Figure 2D. The fibronectin, XBP1s and β -actin were detected from different parts of the same blot (the blot was cropped into 3 pieces between 130 kD and 70 kD, 55 kD and 40 kD, then fibronectin was detected from the upper blot, XBP1s was detected from the middle blot and β -actin was detected from the lower blot). M, protein marker. OE, overexpression. CG, chlorhexidine digluconate.



Supplementary Figure 2. CG induced XBP1s expression in rat peritoneal tissue (the full-length blots for Figure 3A). The XBP1s was detected from the full-length blot, while the β -actin detection was from a different part of the same blot (after detection of XBP1s, the blot was cropped between 70 kD and 55 kD, and β -actin was detected from the lower blot). CG, chlorhexidine digluconate.