

Citrated Blood

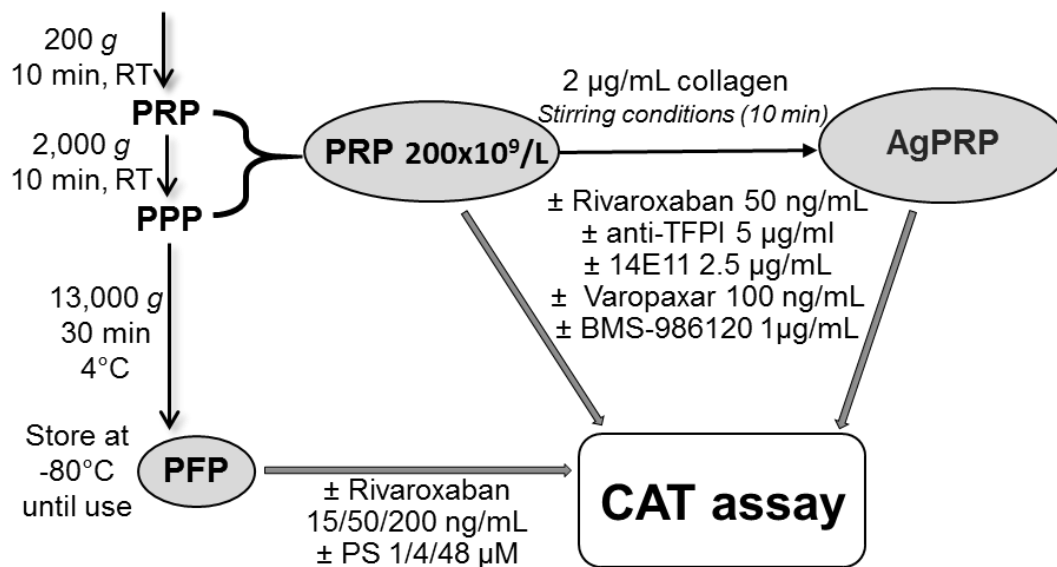


Figure S1. Plasma preparations from human citrated blood samples for CAT assay. PRP, platelet rich plasma; PPP, platelet-poor plasma; PFP, platelet free plasma; AgPRP, aggregated PRP; RT, room temperature; CAT, calibrated automated thrombography; TFPI; tissue factor pathway inhibitor.

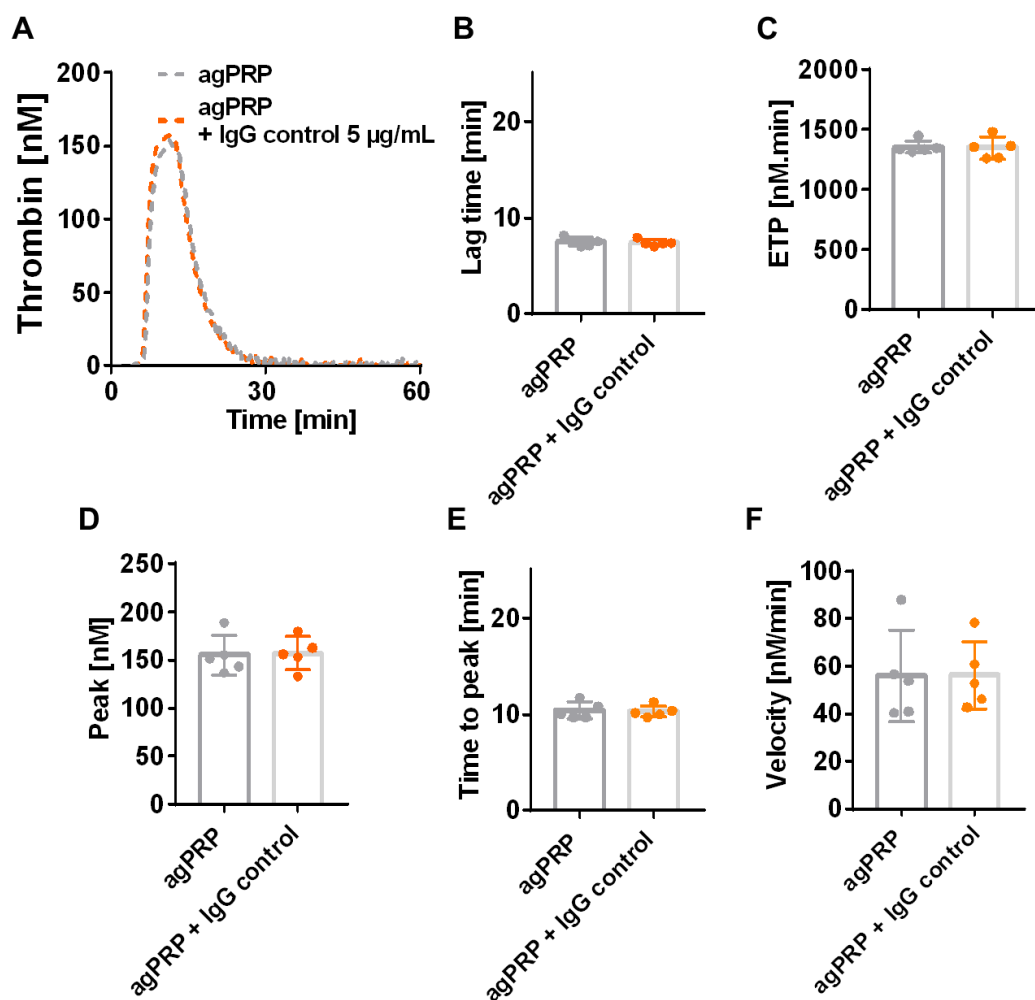


Figure S2: IgG isotype control effect on aggregated platelet in TG. Representative Thrombin generation (TG) curves in aggregated PRP (agPRP) triggered with 2 µg/mL of collagen with and without addition or 5 µg/mL IgG isotype control (A). TG parameters: lag time, endogenous thrombin potential (ETP); peak; time to peak and velocity (B-F) Results are presented as median (min-max). n = 5 per group.