

## **Supplemental Material**

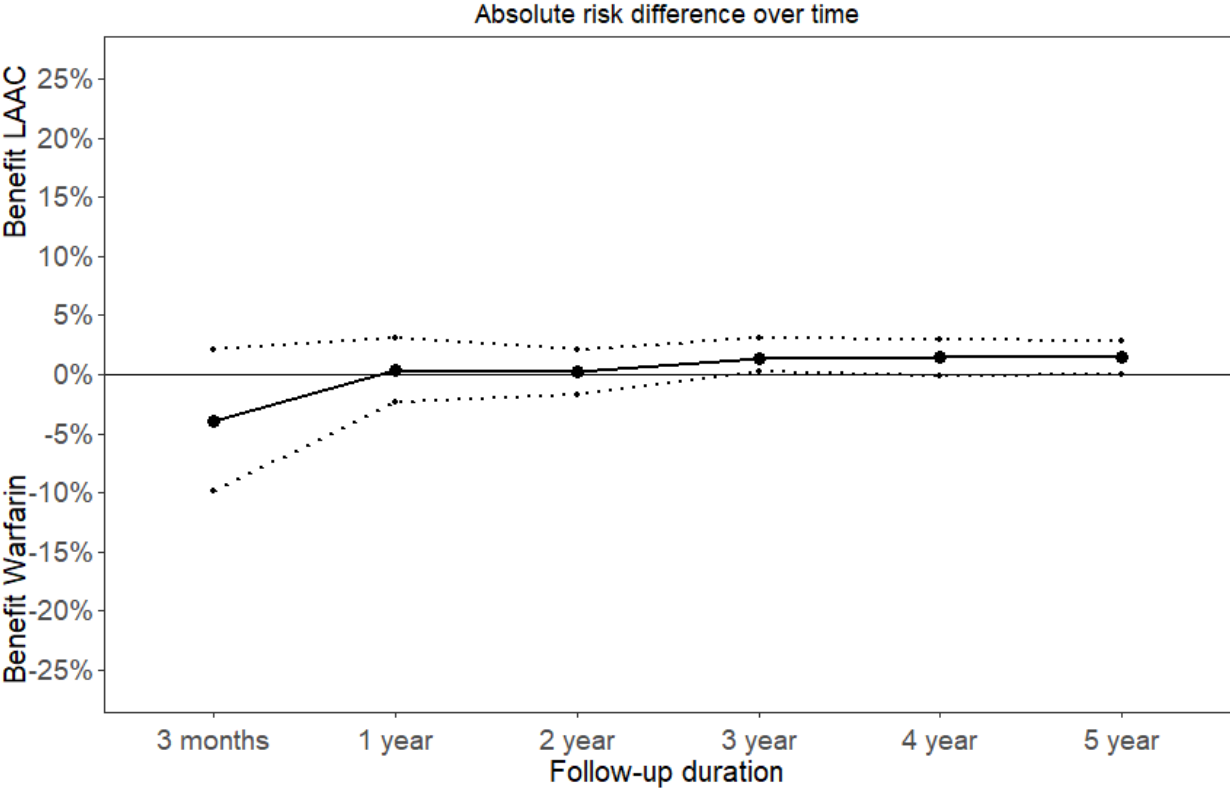
**Table S1. List of participating hospitals in the Protect-AF and PREVAIL studies.**

		Protect-AF	PREVAIL
United States, Arizona	Advanced Cardiac Specialists	1	
	Arizona Arrhythmia	1	1
	Mercy Gilbert Medical Center		1
United States, California	Foundation for Cardiovascular Medicine	1	1
	Los Angeles Cardiology Associates	1	
	Cedars-Sinai Medical Center	1	1
	El Camino Hospital	1	
	Orange County Heart	1	1
	UC Davis Medical Center	1	
	St. John's Hospital / Pacific Heart	1	1
	Scripps Green		1
United States, District of Columbia	Washington Hospital Center	1	
United States, Florida	University of Miami	1	
	Baptist Cardiac and Vascular Institute	1	1
	Bay Heart Group	1	
	Zasa Clinical Research		1
	Florida Hospital		1
United States, Georgia	Emory University Midtown Hospital	1	1
	Piedmont Hospital	1	
	Emory University Hospital	1	
United States, Illinois	University of Chicago	1	
	North Shore University	1	1
	Loyola University Medical Center	1	
	Prairie Education Research Cooperative	1	
United States, Iowa	Iowa Heart Center		1
United States, Kentucky	Baptist Hospital West	1	
	University of Kentucky	1	
	Central Baptist Hospital		1
United States, Louisiana	Terrebonne General Medical Center	1	
	Ochsner Clinic	1	

United States, Massachusetts	Massachusetts General Hospital	1	1
	Lahey Clinic		1
United States, Michigan	University of Michigan Medical Center	1	1
	William Beaumont	1	1
United States, Minnesota	Abbott Northwestern Hospital	1	1
	Mayo Clinic	1	1
	St. Paul Heart Clinic	1	
United States, Mississippi	University of Mississippi Healthcare Center	1	
	Cardiology Associates of N. Mississippi		1
United States, Missouri	St. Luke's Hospital	1	1
	St. John's Mercy		1
United States, Nebraska	Nebraska Heart Institute	1	
	Bryan LGH		1
United States, New Jersey	Cooper University Hospital	1	
	Englewood Hospital and Medical Center		1
United States, New Mexico	New Mexico Heart Institute	1	
United States, New York	New York University Medical Center	1	1
	Columbia University Medical Center	1	1
	Mt. Sinai Medical Center	1	1
United States, North Carolina	Carolinas Medical Center		1
United States, Ohio	Summa Health System	1	
	Lindner Clinical Trial Center	1	1
	Cleveland Clinic Foundation	1	1
	Ohio State University	1	
	Riverside Methodist Hospital	1	
United States, Pennsylvania	Geisinger Medical Center	1	
	Harrisburg Hospital / Associated	1	

	Cardiology		
	Allegheny General Hospital	1	
	Presbyterian University Hospital	1	
	Moffitt Heart & Vascular	1	1
	Hospital of the University of Pennsylvania		1
United States, Tennessee	Mercy Medical Center West	1	
	St. Thomas Research Institute	1	1
United States, Texas	Texas Cardiac Arrhythmia	1	1
	St. Lukes Episcopal Hospital	1	
	Baylor Research Institute		1
	Methodist Hospital		1
United States, Utah	Intermountain Medical Center	1	1
United States, Virginia	University of Virginia	1	
	Inova Fairfax Hospital	1	
	Sentara Norfolk General Hospital	1	
United States, Vermont	Fletcher Allen		1
United States, Washington	Swedish Medical Center	1	1
United States, Wisconsin	Marshfield Clinic	1	
	St. Luke's Hospital		1
Czech Republic	Na Homolce	1	
Germany	Krankenhaus der Barmherzige Bruder	1	
	Cardiovasculares Centrum Frankfurt - Sankt Katharinen	1	
	Herzzentrum	1	

**Figure S1. Net clinical benefit of LAAC compared with warfarin therapy over time in the artificially lower PE incidence scenario.**



**Lowered PE incidence:** scenario where the PE incidence is artificially lower to 1% from 3%. mRS score for ischemic and hemorrhagic stroke are used and fixed weights for major bleed and pericardial effusion of 0.05.

Figure S2. Absolute risk difference using mRS weights for ischemic and hemorrhagic stroke and fix weights of 0.10 for major bleed and pericardial effusion events.

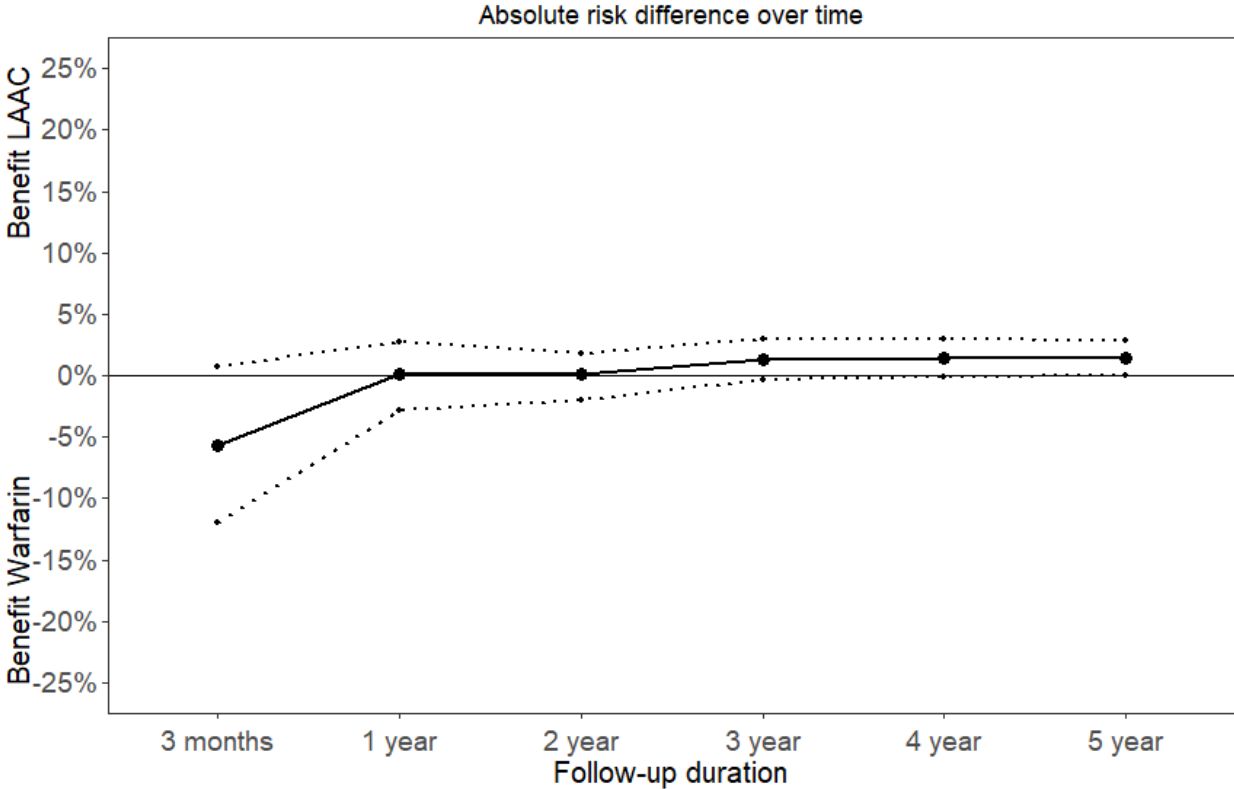


Figure S3. Absolute risk difference using mRS weights for ischemic and hemorrhagic stroke and fix weights of 0.15 for major bleed and pericardial effusion events.

