

Interstitial glucose – average level (mmol/L)

Table. An outline of interstitial glucose levels recorded over the six weeks stratified by group allocation, reported as mean±SD.

	Week 1	Week 2	Week 3	Week 4	Week 5	Week 6
Group 1: G ₄ GPA ₂	5.7±0.9	5.6±0.9	5.6±0.7	5.5±0.6	5.5±0.4	5.4±0.5
Group 2: PA ₄ GPA ₂	[REDACTED]				5.6±0.5	5.5±0.5
Group 3: GPA ₆	5.5±0.4	5.5±0.5	5.5±0.7	5.5±0.5	5.5±0.7	5.5±0.6

Glucose feedback – time in range / rate of change

In an effort to display what information participants were presented via the LibreLink app, glucose characteristics are presented in the below figures.

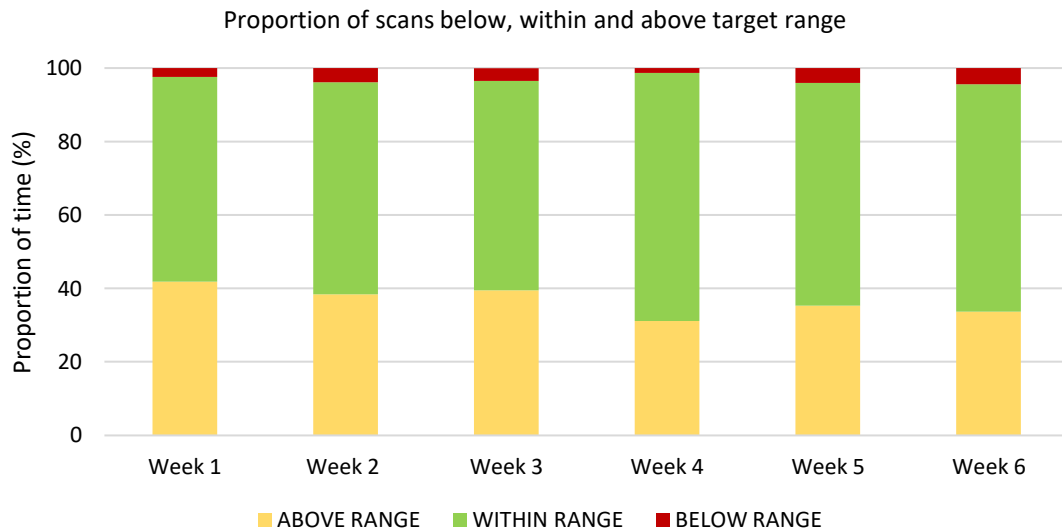


Figure. An overview of the proportion of scans recorded as being within, below or above target range. *all participants except weeks 1 to 4 during which there is no data for PA₄GPA₂ participants.

Proportion of scans showing the rate of change of interstitial glucose levels



Figure. The proportion of scans that showed participants were experiencing a ‘changing slowly’, ‘rising’, ‘falling’ (and so on) direction of change arrow via the Freestyle Libre application.