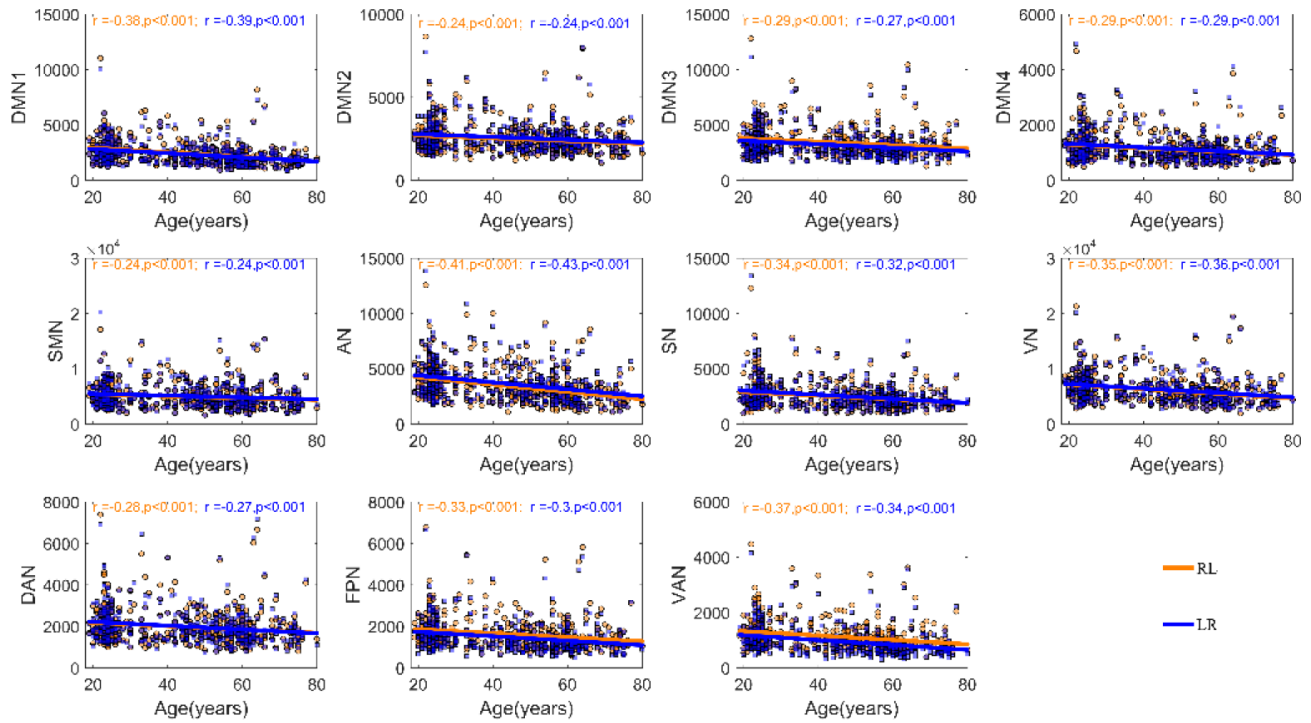
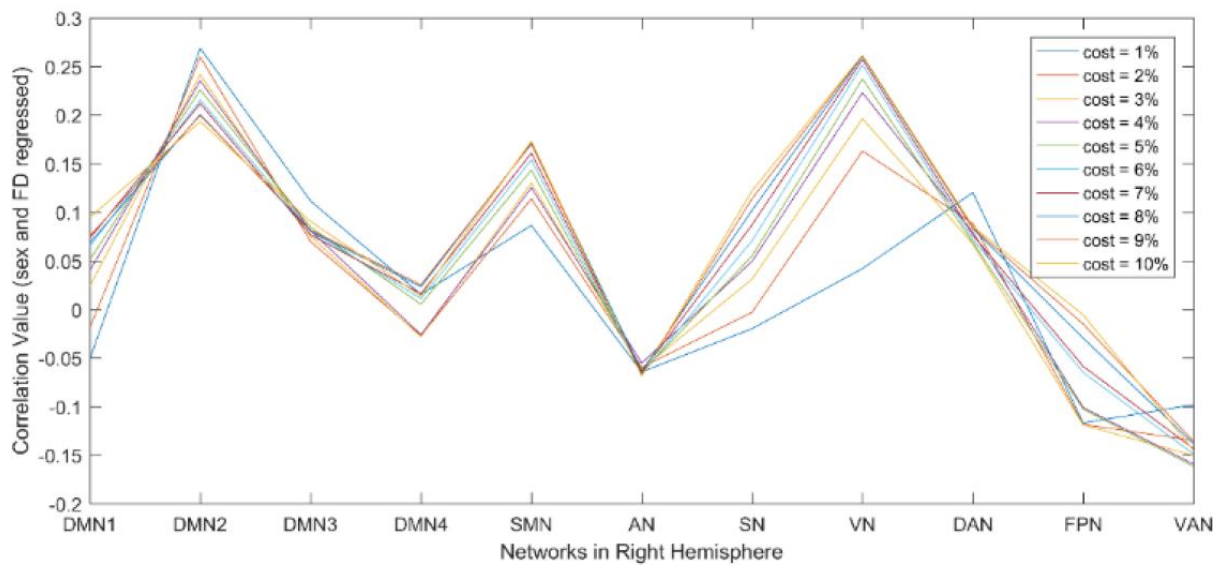
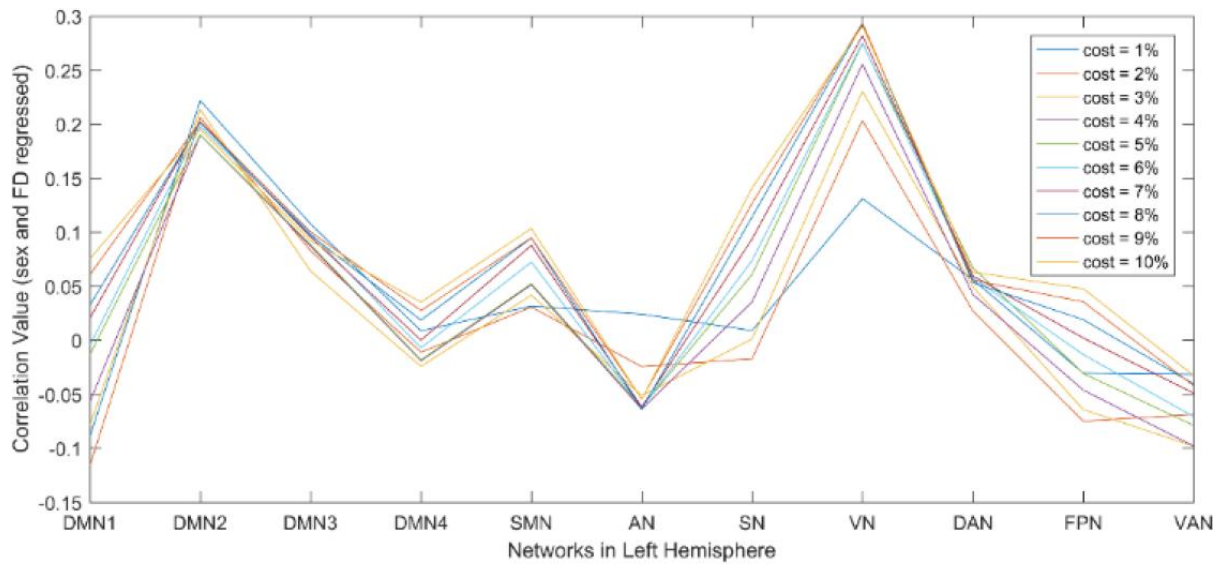


SUPPLEMENTARY FIGURES



Supplementary Figure 1. The relationship between age and inter-hemispheric functional connectivity for each network after controlling for the participant's sex and mean FD. The blue fitted line indicates a given network in the left hemisphere interacted with all regions within the right hemisphere; the orange fitted line indicates a given network in the right hemisphere interacted with all regions within the left hemisphere.



Supplementary Figure 2. The relationship between age and intra-hemispheric integration in the left hemisphere (up) and right hemisphere (bottom) across a range of edge densities (1–10%).