

Supplementary Materials: Mechanical Property Changes in Breast Cancer Cells Induced by Stimulation with Macrophage Secretions in Vitro

Hyonchol Kim ^{1,2,#,*}, Kenta Ishibashi ^{1,2,#}, Tomoko Okada ¹ and Chikashi Nakamura ^{1,2}

¹ Biomedical Research Institute, National Institute of Advanced Industrial Science and Technology (AIST), 1-1-1 Higashi, Tsukuba, Ibaraki 305-8565, Japan; t.okada@aist.go.jp (T.O.); chikashinakamura@aist.go.jp (C.N.)

² Graduate School of Engineering, Tokyo University of Agriculture and Technology, 2-24-16 Nakamachi, Koganei, Tokyo 184-8588, Japan; s189320z@st.go.tuat.ac.jp (K.I.)

* Correspondence: kim-hc@aist.go.jp; Tel.: +81-29-861-9392 (H.K.)

These authors contributed equally to this work.

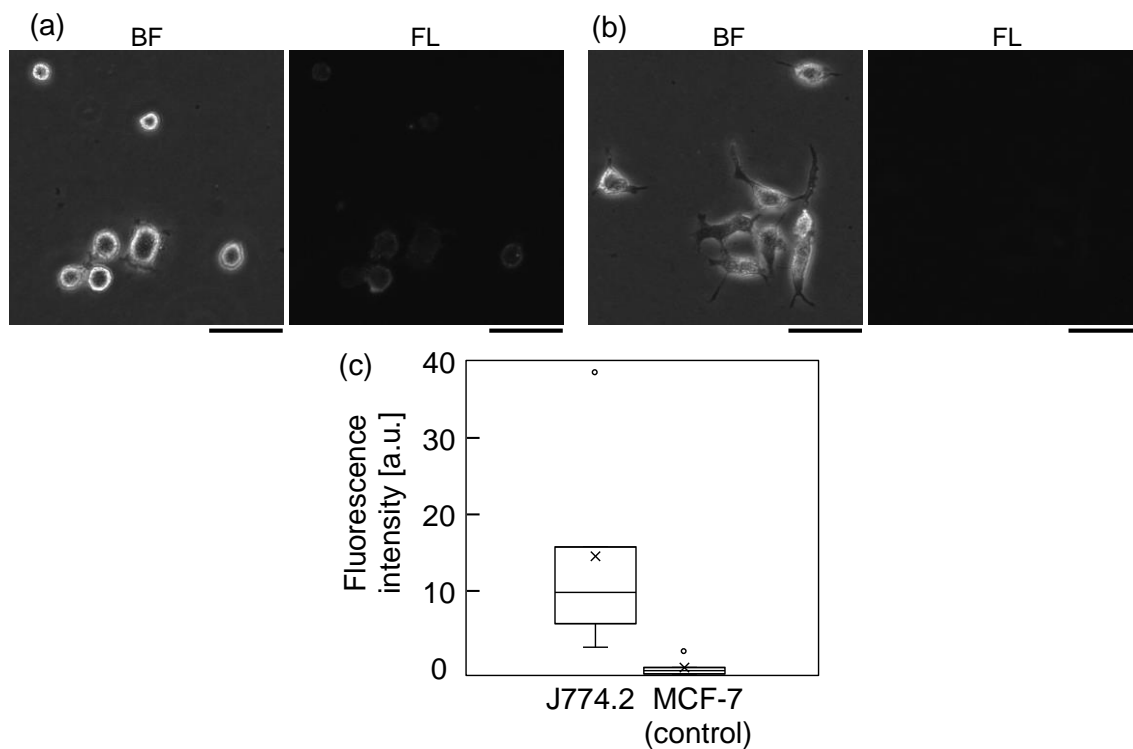


Figure S1. Images of PD-1 expression on J774.2 (a) and MCF-7 (b, negative control) cells. Bright field (BF, left) and fluorescence (FL, right) images are shown. Bars: 50 μ m. (c) Comparison of fluorescence intensities between J774.2 and MCF-7 cells. $N = 62$ for J774.2 and $N = 57$ for MCF-7.

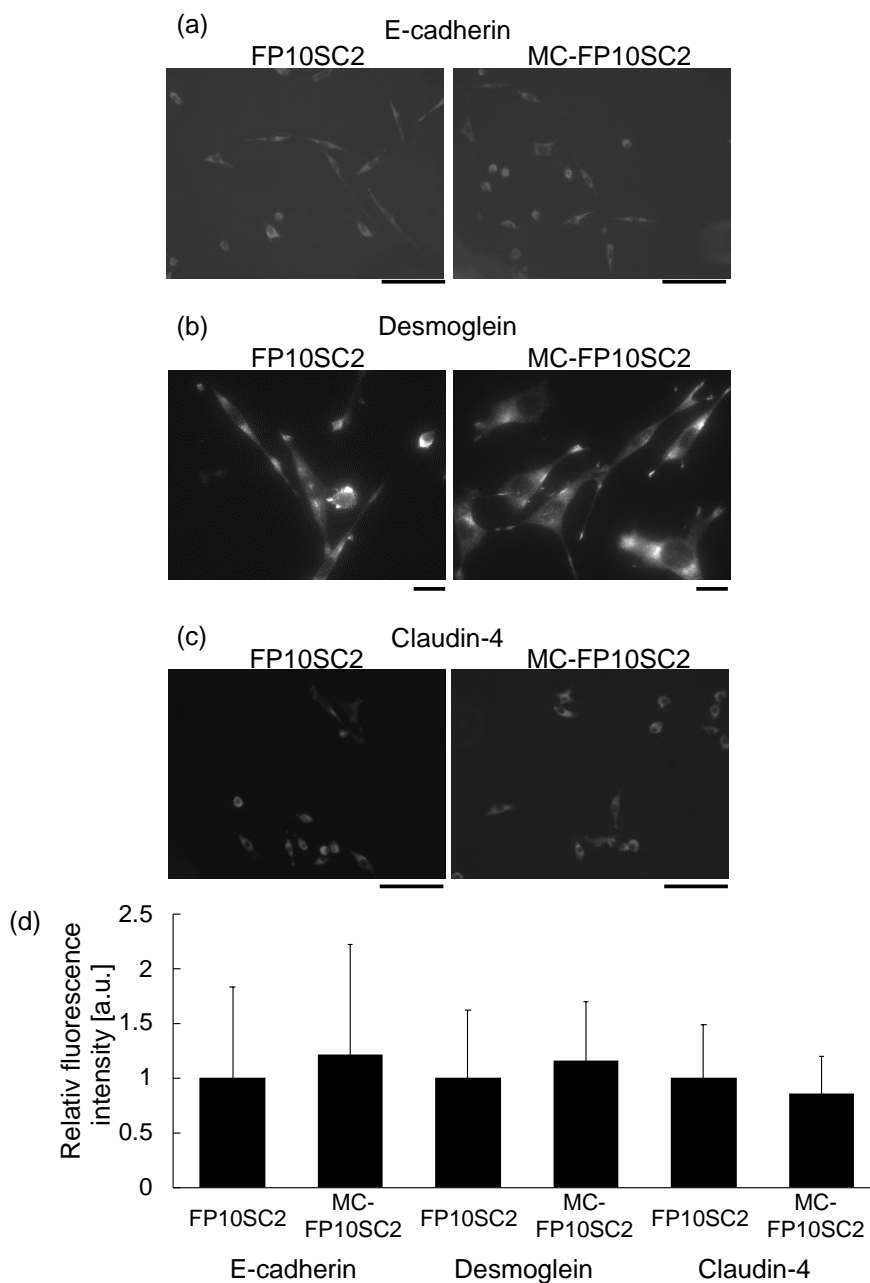


Figure S2. Images of E-cadherin (a), desmoglein (b), and claudin-4 (c) molecules on FP10SC2 (left) and MC-FP10SC2 (right) cells. Bars: 100 μm . (d) Comparison of relative fluorescence intensities between FP10SC2 and MC-FP10SC2 cells for the three molecules. Values of FP10SC2 cells were used the standard for comparison. $N = 38$ and $N = 43$, $N = 46$ and $N = 52$, and $N = 109$ and $N = 105$ for FP10SC2 and MC-FP10SC2 cells for E-cadherin, desmoglein, and claudin-4, respectively.

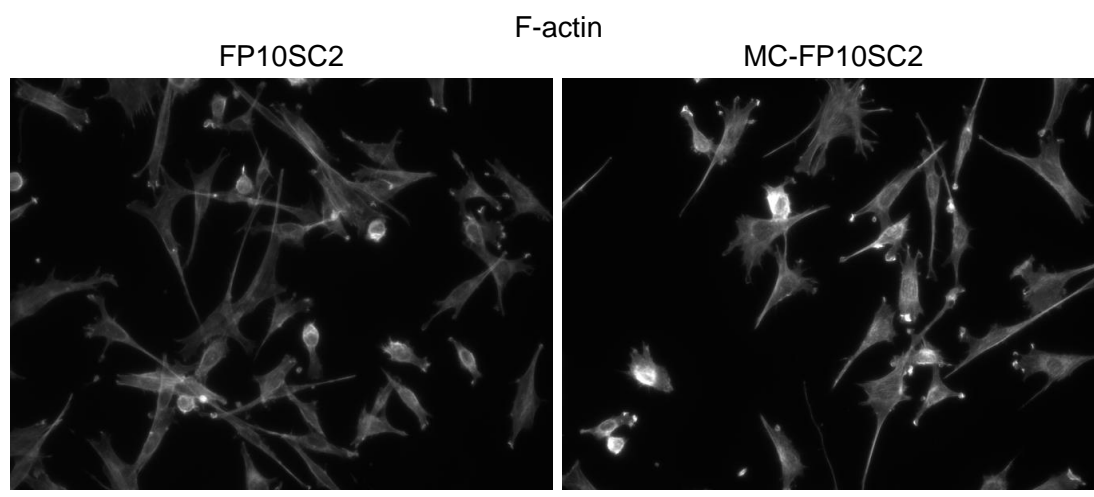


Figure S3. Images of F-actin on FP10SC2 (left) and MC-FP10SC2 (right) cells. Bars: 100 μm .