

Supplementary Figures:

Supplementary Figs 1 and 2, and pictures of uncropped gels

Acute Thiamethoxam toxicity in honeybees is not enhanced by common fungicide and herbicide and lacks stress-induced changes in mRNA splicing

Pâmela Decio^{1*}, Pinar Ustaoglu^{2*} †, Thaisa C. Roat¹, Osmar Malaspina¹, Jean-Marc Devaud³, Reinhard Stöger^{4, 5} and Matthias Soller^{2, 5}

¹Universidade Estadual Paulista (UNESP), Instituto de Biociências, Centro de Estudos de Insetos Sociais, Rio Claro, São Paulo, Brazil.

²School of Biosciences, College of Life and Environmental Sciences, University of Birmingham, Edgbaston, Birmingham, B15 2TT, United Kingdom

³Research Center on Animal Cognition, Center for Integrative Biology, Toulouse University, CNRS, UPS, Toulouse, France.

⁴School of Biosciences, University of Nottingham, LE12 5RD, United Kingdom

Running title: Neonicotinoid toxicity is not enhanced by common fungicide and herbicide

Key Words: Neonicotinoid, carbendazim, glyphosate, *Apis mellifera*, alternative splicing, *Dscam*, ELAV, RNA binding proteins

⁵Corresponding authors: m.soller@bham.ac.uk, reinhard.stoger@nottingham.ac.uk

* equal contributing authors

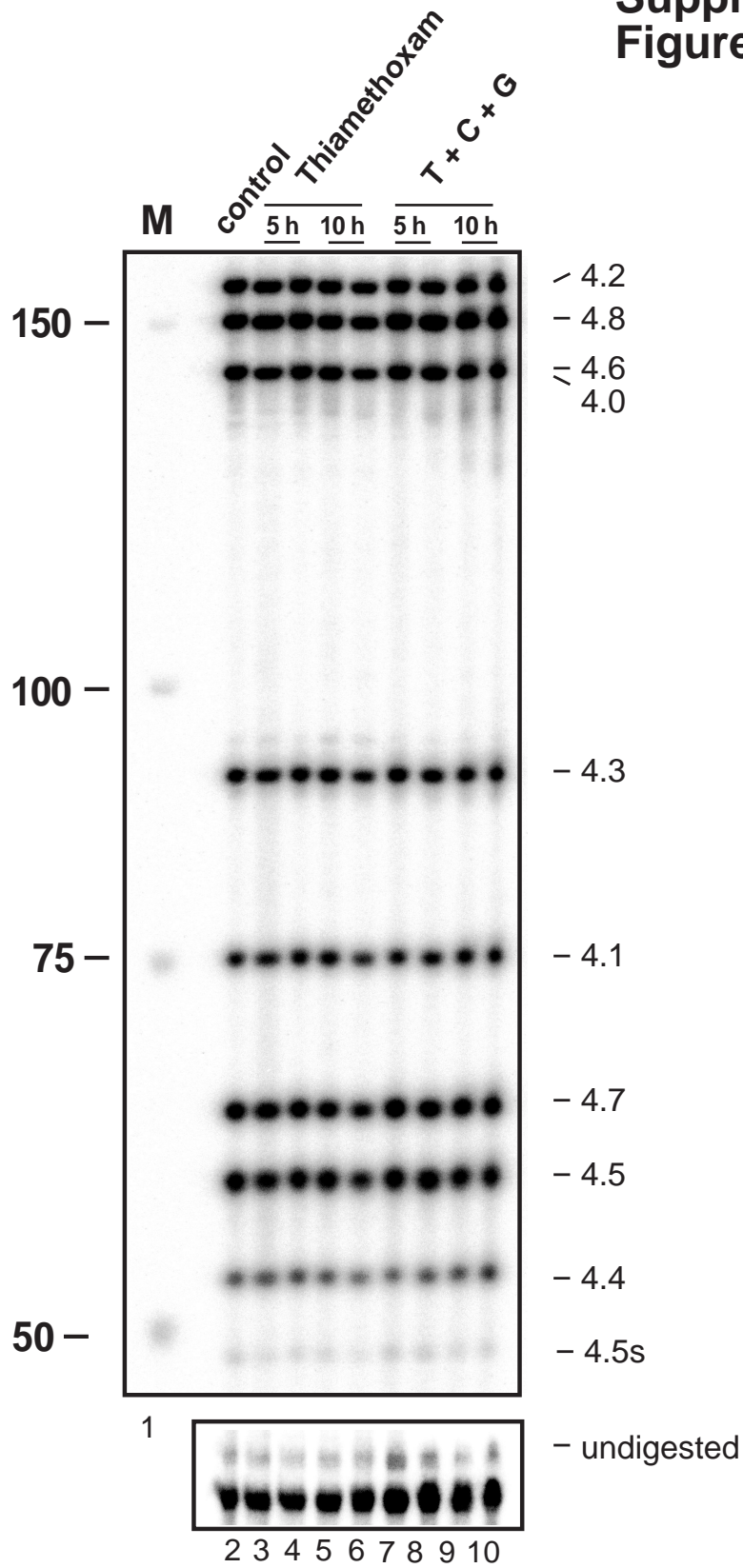
Present address: † MRC Centre for Molecular Bacteriology and Infection, and Department of Life Sciences, Imperial College London, Ground Floor, Flowers Building, South Kensington Campus, London SW7 2AZ, UK

**Suppl
Figure 1**



Supplemental Figure 1: Picture of a honey bee. The red arrow points towards the site of injection.

**Suppl
Figure 2**



Supplemental Figure 2: Denaturing polyacrylamide gel showing the splicing pattern of Dscam exon 4 isoform variables after digestion with restriction enzymes 5 h and 10 h after injection of Thiamethoxam (1 μ M) or the combination of Thiamethoxam, Carbendazim and Glyphosate (T+C+G, 1 μ M/2 mM/47 mM). The undigested PCR is shown at the bottom. Ma: DNA marker

Fig 2 C

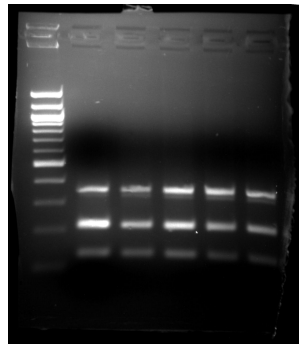


Fig 2 D gel used for quantification

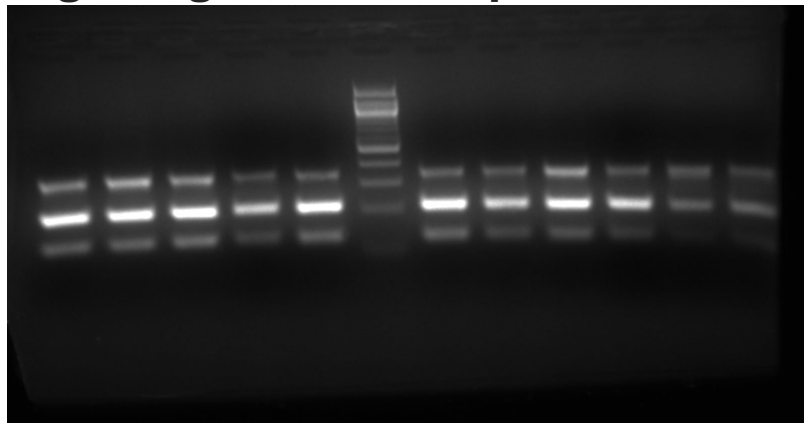
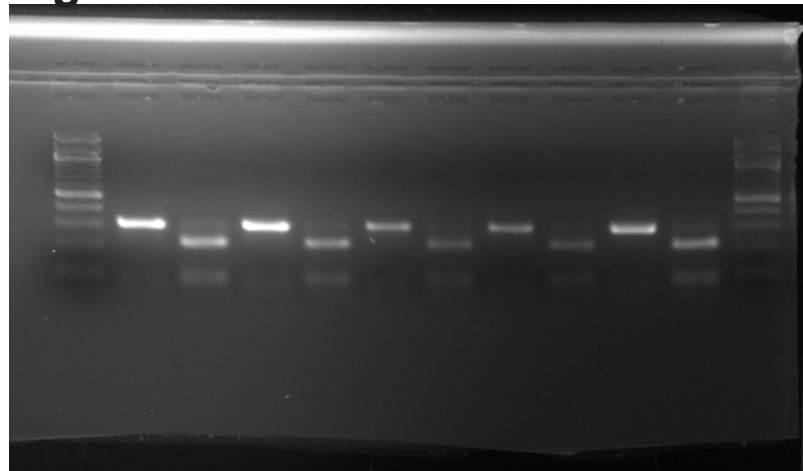
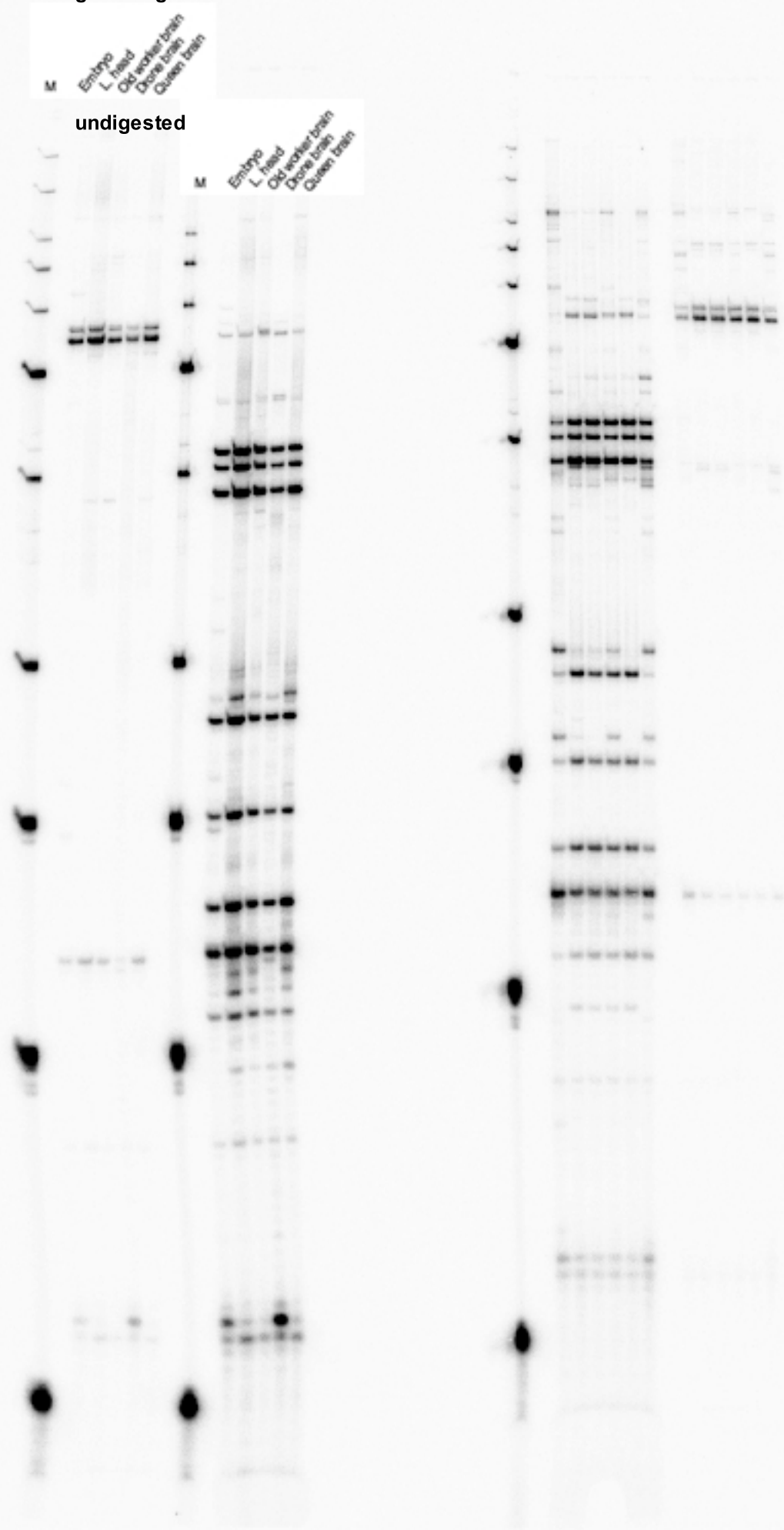


Fig 2 E

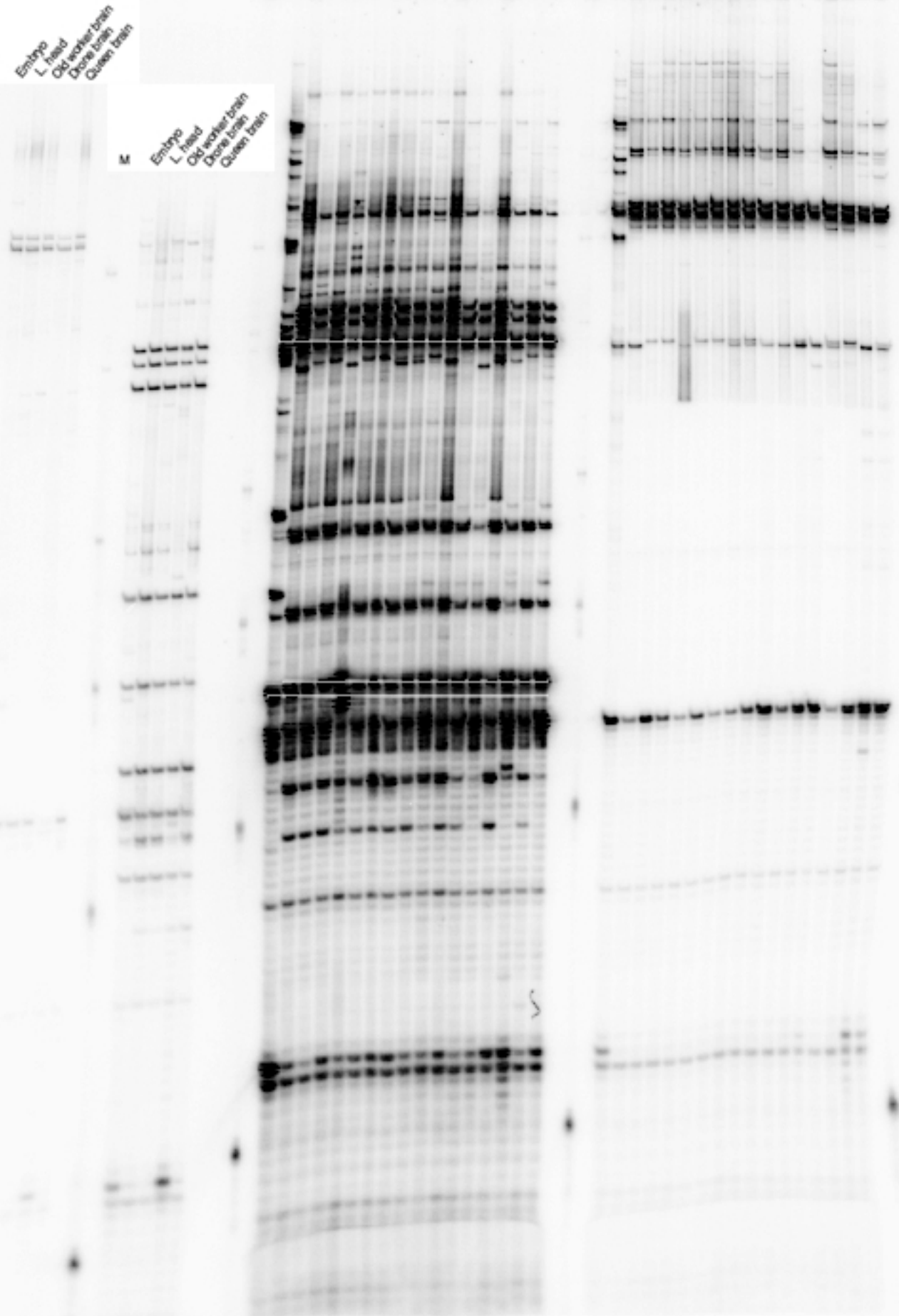


gel in Fig 3

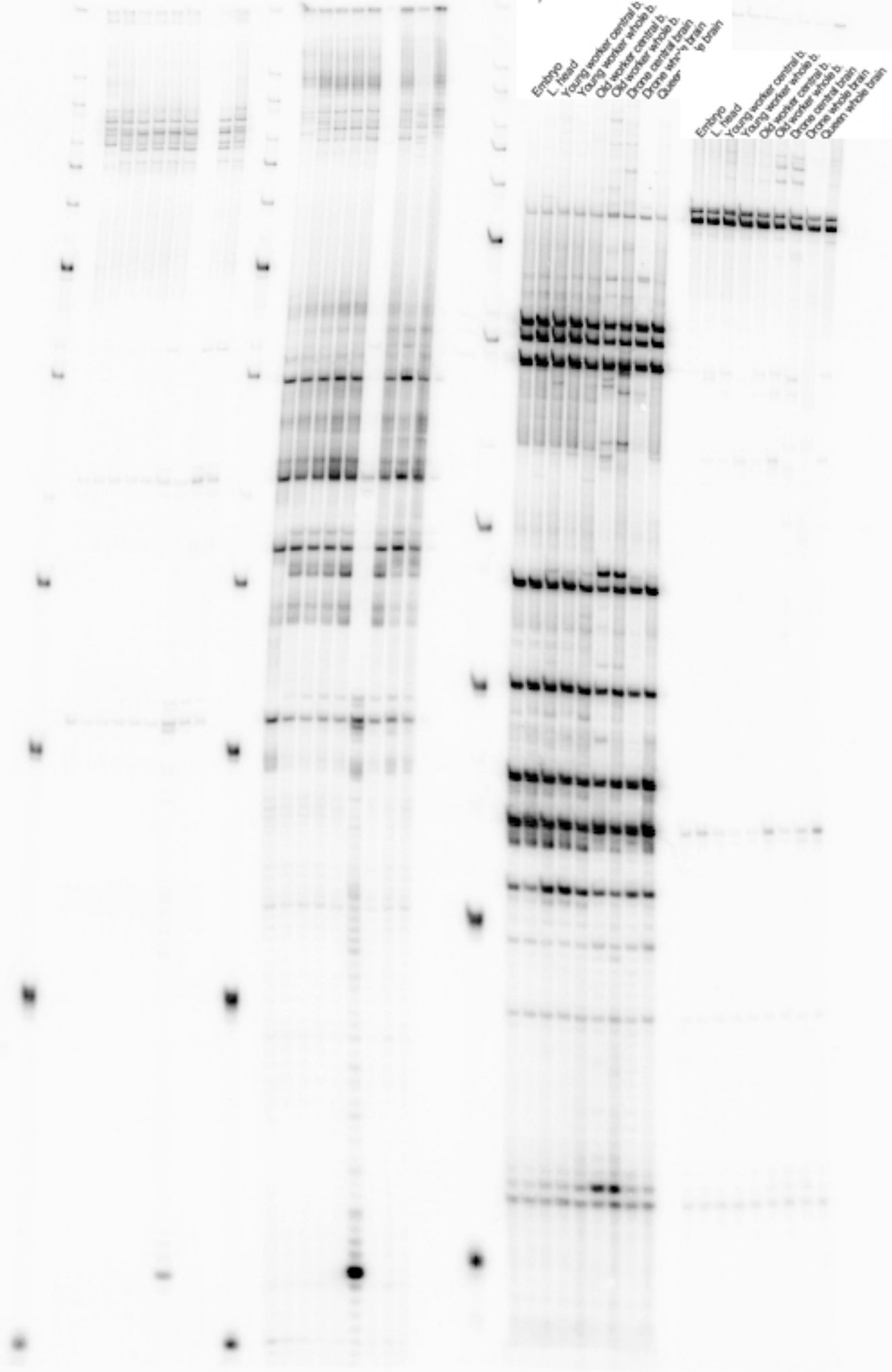


M Embryo
L head
O&G worker brain
Dome brain
Queen brain

K Embryo
L head
O&G worker brain
Dome brain
Queen brain



gel used for quantification in Fig 3



gel used for quantification in Fig 3

Fig 4

Ma Control 1
 Control 2
 Control 3
 Thiamethoxam
 T + C + G

undigested long run

Ma Control 1
 Control 2
 Control 3
 Thiamethoxam
 T + C + G

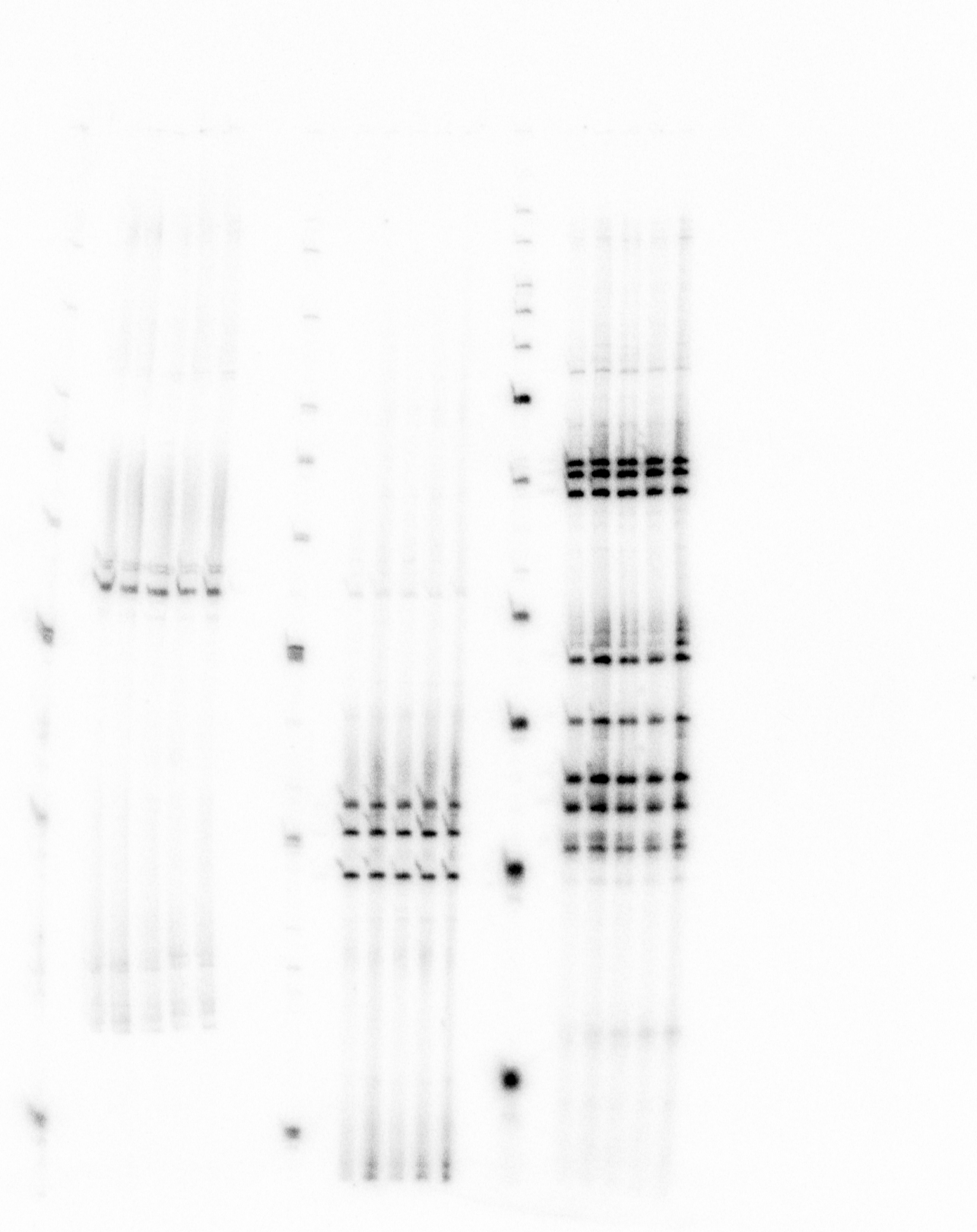
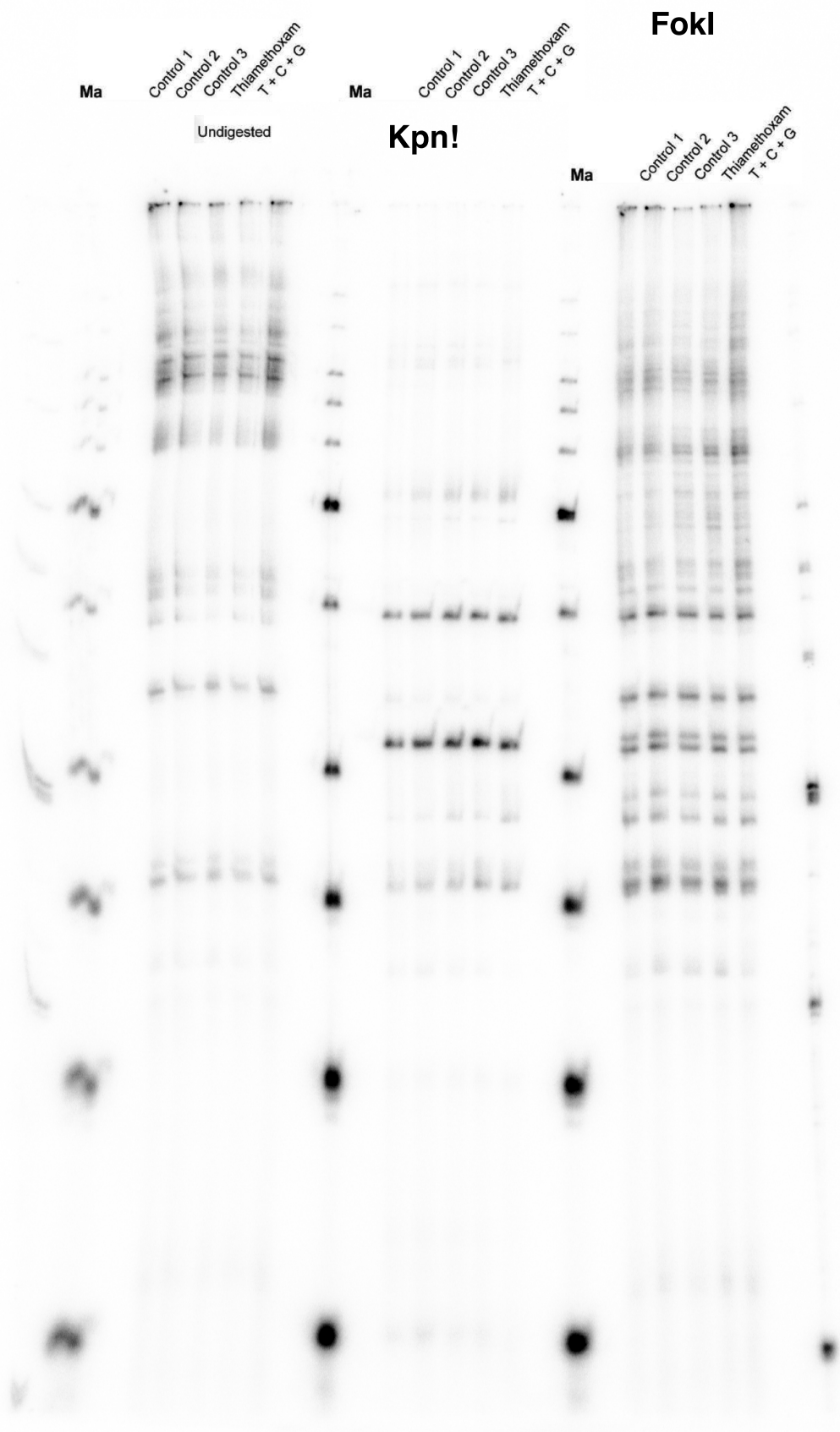


Fig 5



Supplemental Figure 2
undigested



Supplemental Figure 2
digested

