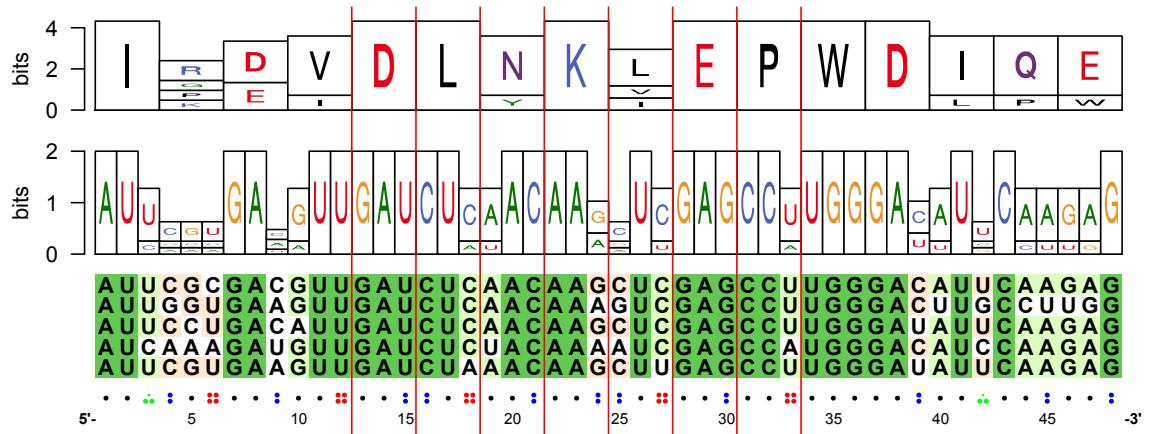


Target count: 5

Best Allenscore

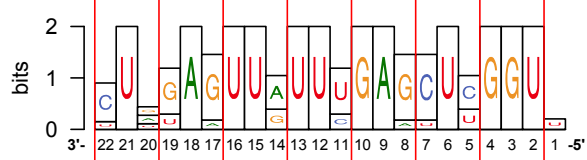
1.0	AT2G46770	NST1
3.0	AT3G29035	NAC3
1.0	AT3G61910	NAC066
3.0	AT5G62380	NAC101
3.0	AT1G32770	NAC012



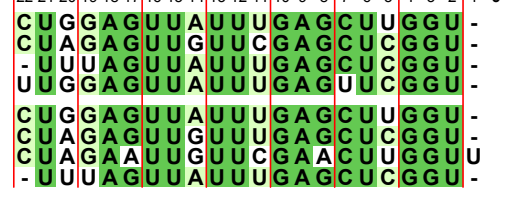
SupFam_47

1.9
log10
RPM
0

- Cl_cgr-pm_137
- Cl_cgr-pm_4699
- Cl_cgr-pm_6032
- Cl_cgr-pm_10999
- Cl_cgr-mass_627
- Cl_cgr-mass_2494
- Cl_cgr-mass_17756
- Cl_cgr-mass_37388



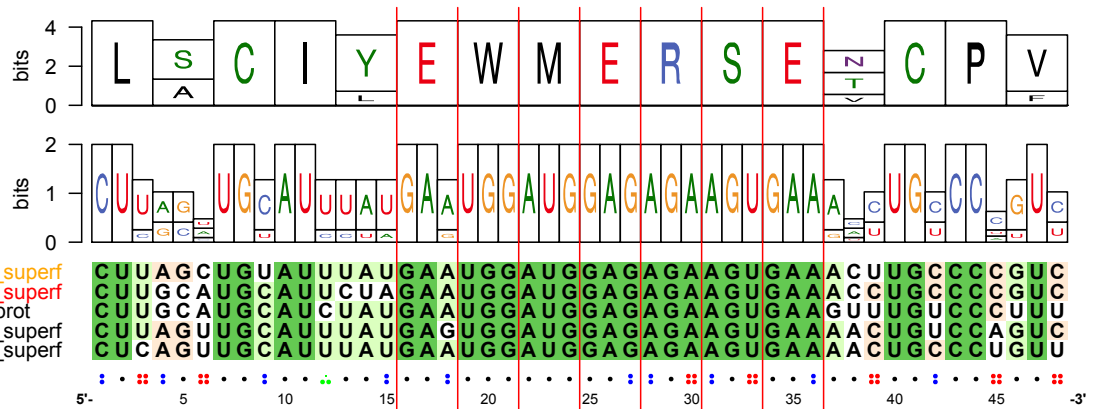
Perc. ID
 >80%
 >60%
 >40%
 <40%



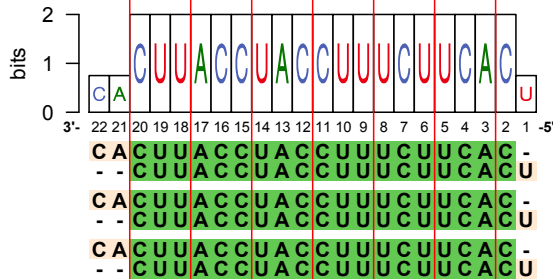
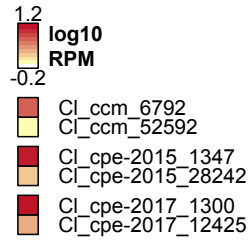
Target count: 5

Best Allenscore

- 1.0 AT5G38895 RING/U-box_superf
- 1.0 AT5G41350 RING/U-box_superf
- 1.0 AT1G69085 E3 ubiquitin-prot
- 2.0 AT3G02290 RING/U-box_superf
- 1.0 AT5G15790 RING/U-box_superf



SupFam_75



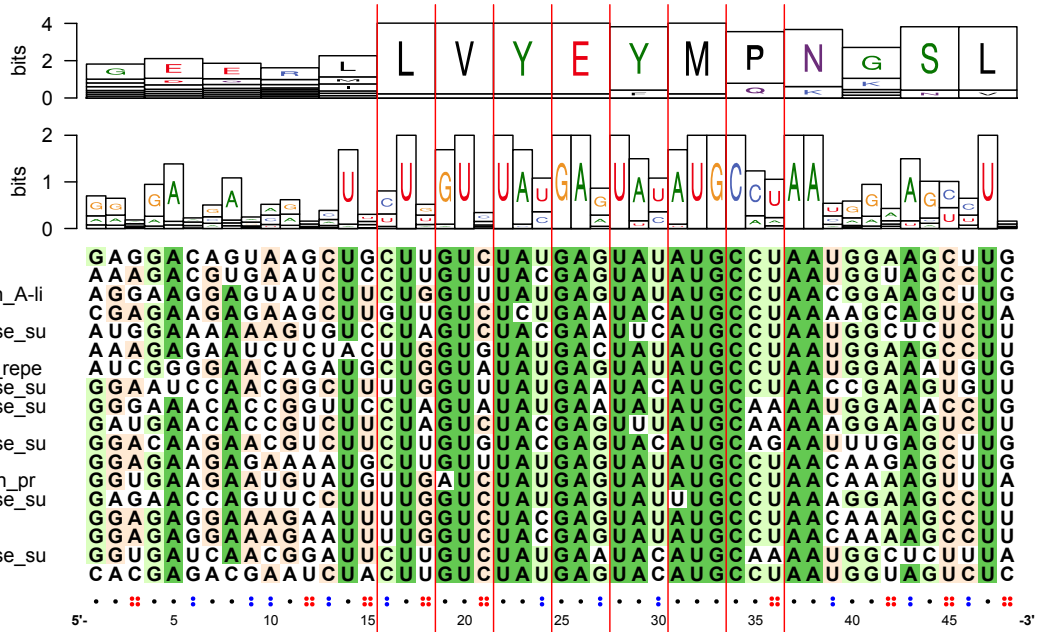
Perc. ID

- >80%
- >60%
- >40%
- <40%

Target count: 18

Best Allenscore

- 1.0 AT3G19700 IKU2
- 2.0 AT4G20270 BAM3
- 2.0 AT5G06740 Concanavalin_A-li
- 3.0 AT3G42880 PRK3
- 3.0 AT5G60080 Protein_kinase_su
- 3.0 AT3G59700 HLECRK
- 2.0 AT3G53590 Leucine-rich_repe
- 2.0 AT3G09830 Protein_kinase_su
- 2.0 AT1G24030 Protein_kinase_su
- 1.0 AT2G39660 BIK1
- 2.0 AT3G15890 Protein_kinase_su
- 2.0 AT4G21390 B120
- 2.0 AT4G27300 S-locus_lectin_pr
- 3.0 AT1G76360 Protein_kinase_su
- 2.0 AT4G23160 CRK8
- 2.0 AT4G23140 CRK6
- 0.0 AT3G20530 Protein_kinase_su
- 3.0 AT5G65700 BAM1



3
log10
RPM
0.1

- Cl_ccm_7
- Cl_ccm_871
- Cl_ccm_4559
- Cl_ccm_7146
- Cl_ccm_27265
- Cl_cpe-2015_5
- Cl_cpe-2015_114
- Cl_cpe-2015_1077
- Cl_cpe-2015_2178
- Cl_cpe-2015_4852
- Cl_cpe-2015_20147
- Cl_cpe-2017_9
- Cl_cpe-2017_194
- Cl_cpe-2017_665
- Cl_cpe-2017_2071
- Cl_cpe-2017_5671
- Cl_cpe-2017_33377
- Cl_cgr-pm_271
- Cl_cgr-pm_808
- Cl_cgr-pm_1040
- Cl_cgr-pm_8755
- Cl_cgr-pm_35307
- Cl_cgr-mass_914
- Cl_cgr-mass_2085
- Cl_cgr-mass_7885



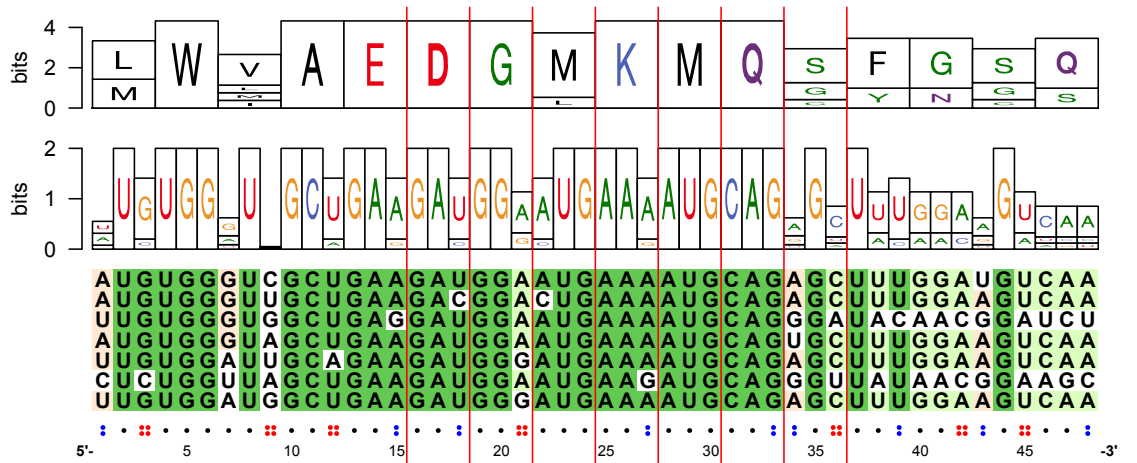
Perc. ID

- >80%
- >60%
- >40%
- <40%

Target count: 7

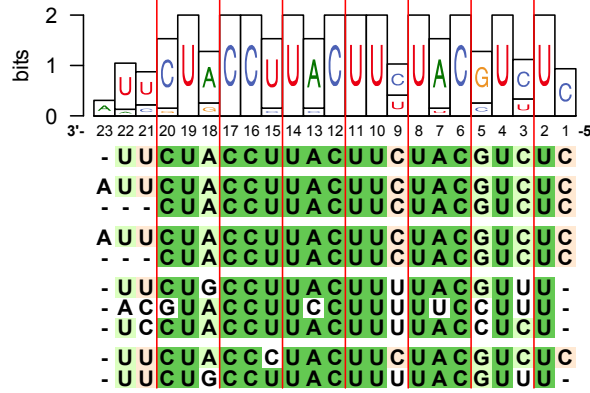
Best Allenscore

- 2.0 AT1G78970 LUP1
- 2.0 AT1G78960 LUP2
- 2.0 AT3G45130 LAS1
- 2.0 AT1G66960 LUP5
- 2.0 AT1G78955 CAMS1
- 1.0 AT2G07050 CAS1
- 2.0 AT1G78950 BAS



SupFam_25

- 1.9 log10 RPM
- 0.1
- CI_ccm_2177
 - CI_cpe-2015_150
 - CI_cpe-2015_15012
 - CI_cpe-2017_186
 - CI_cpe-2017_17400
 - CI_cgr-pm_5848
 - CI_cgr-pm_10735
 - CI_cgr-pm_41013
 - CI_cgr-mass_1328
 - CI_cgr-mass_22564



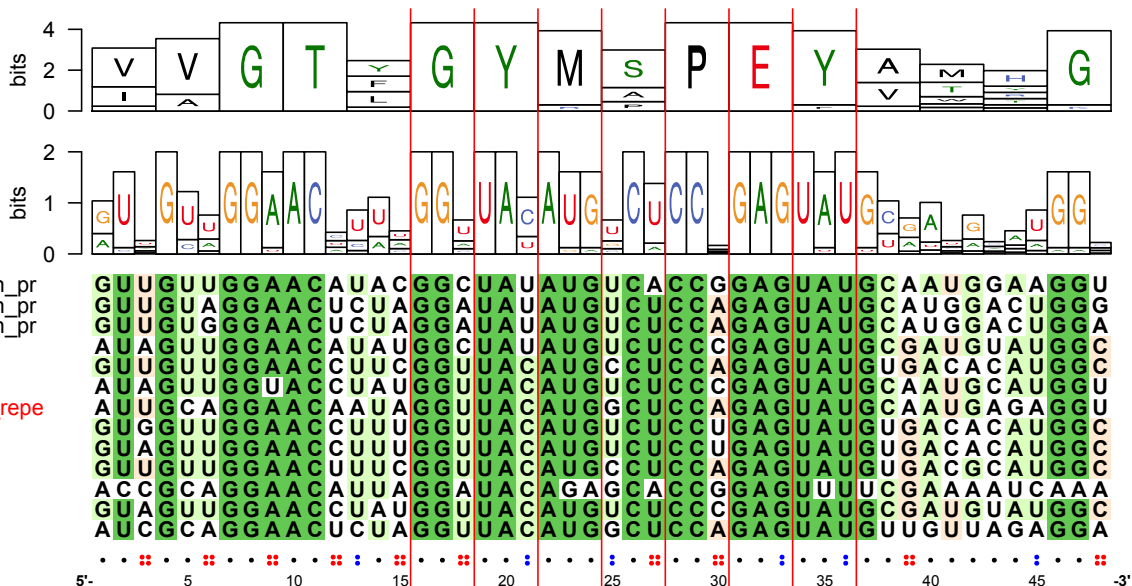
Perc. ID

- >80%
- >60%
- >40%
- <40%

Target count: 13

Best Allenscore

- 3.0 AT1G11330 S-locus_lectin_pr
- 2.0 AT1G61500 S-locus_lectin_pr
- 2.0 AT1G61440 S-locus_lectin_pr
- 3.0 AT3G45860 CRK4
- 2.0 AT4G11470 CRK31
- 3.0 AT4G23180 CRK10
- 2.0 AT1G53440 Leucine-rich_repe
- 2.0 AT4G23260 CRK18
- 2.0 AT4G23250 EMB1290
- 2.0 AT4G11480 CRK32
- 3.0 AT3G51740 IMK2
- 3.0 AT4G23130 CRK5
- 2.0 AT5G40380 CRK42



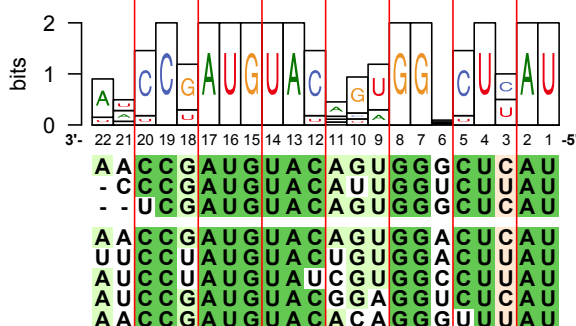
SupFam_59

log10 RPM

1.4

0.2

- Cl_cgr-pm_346
- Cl_cgr-pm_4710
- Cl_cgr-pm_45586
- Cl_cgr-mass_517
- Cl_cgr-mass_750
- Cl_cgr-mass_2756
- Cl_cgr-mass_20246
- Cl_cgr-mass_31780



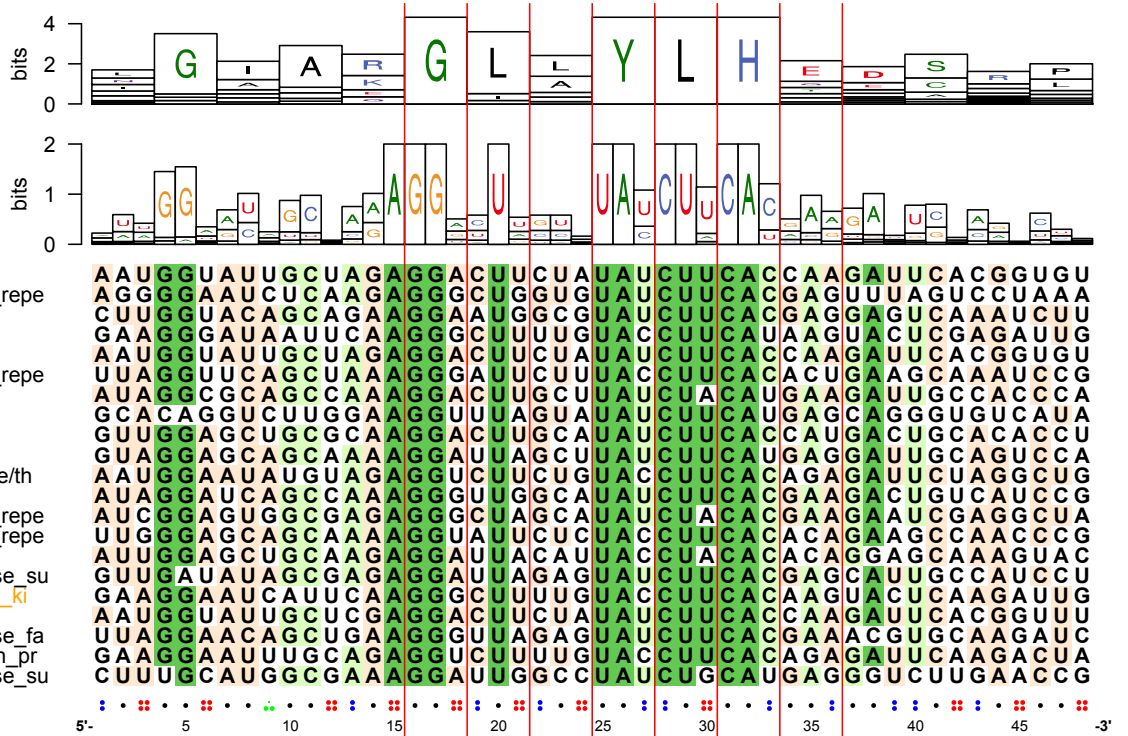
Perc. ID

- >80%
- >60%
- >40%
- <40%

Target count: 21

Best Allenscore

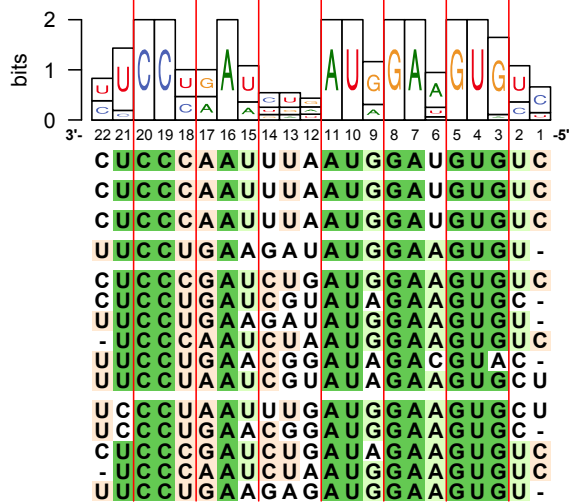
2.0	AT1G65790	RK1
3.0	AT1G25320	Leucine-rich_repe
2.0	AT1G70530	CRK3
3.0	AT3G16030	CES101
2.0	AT1G65800	RK2
2.0	AT3G53590	Leucine-rich_repe
3.0	AT1G10620	PERK11
2.0	AT3G07980	MAPKKK6
3.0	AT5G07180	ERL2
3.0	AT4G32710	PERK14
2.0	AT1G11300	protein_serine/th
1.0	AT1G23540	PERK12
2.0	AT1G53420	Leucine-rich_repe
2.0	AT5G01950	Leucine-rich_repe
3.0	AT5G28680	ANX2
2.0	AT1G80640	Protein_kinase_su
2.0	AT1G67520	lectin_protein_ki
2.0	AT4G21380	RK3
2.0	AT4G28670	Protein_kinase_fa
3.0	AT1G11330	S-locus_lectin_pr
2.0	AT4G01330	Protein_kinase_su



SupFam_49

log10 RPM

- Cl_ccm_1892
- Cl_cpe-2015_368
- Cl_cpe-2017_333
- Cl_cgr-dp_14631
- Cl_cgr-pm_329
- Cl_cgr-pm_652
- Cl_cgr-pm_1330
- Cl_cgr-pm_1915
- Cl_cgr-pm_8463
- Cl_cgr-pm_24876
- Cl_cgr-mass_861
- Cl_cgr-mass_1371
- Cl_cgr-mass_1911
- Cl_cgr-mass_3397
- Cl_cgr-mass_5064



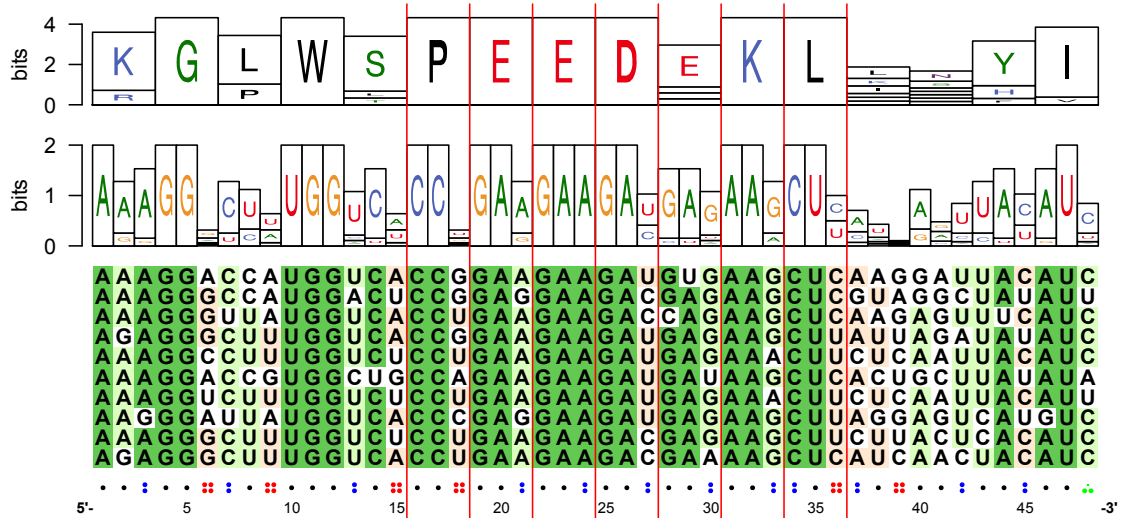
Perc. ID

- >80%
- >60%
- >40%
- <40%

Target count: 10

Best Allenscore

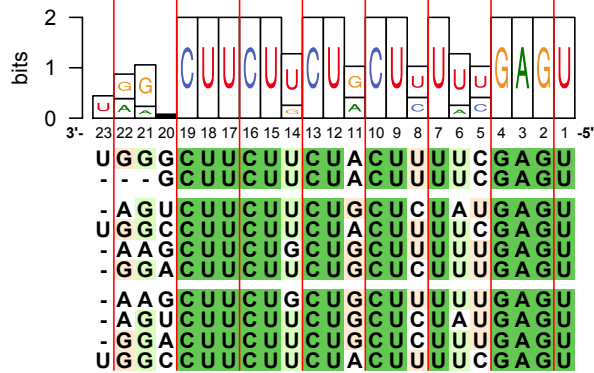
3.0	AT5G57620	MYB36
3.0	AT5G54230	MYB49
3.0	AT5G52260	MYB19
2.0	AT1G63910	AtMYB103
3.0	AT5G26660	MYB86
3.0	AT4G17785	MYB39
3.0	AT1G57560	MYB50
2.0	AT3G48920	MYB45
3.0	AT1G09540	MYB61
2.0	AT3G13890	MYB26



SupFam_37

1.7
log10
RPM
0.2

■	Cl_cgr-dp_279
■	Cl_cgr-dp_37384
■	Cl_cgr-pm_1066
■	Cl_cgr-pm_3376
■	Cl_cgr-pm_4955
■	Cl_cgr-pm_5111
■	Cl_cgr-mass_287
■	Cl_cgr-mass_2920
■	Cl_cgr-mass_3016
■	Cl_cgr-mass_4415



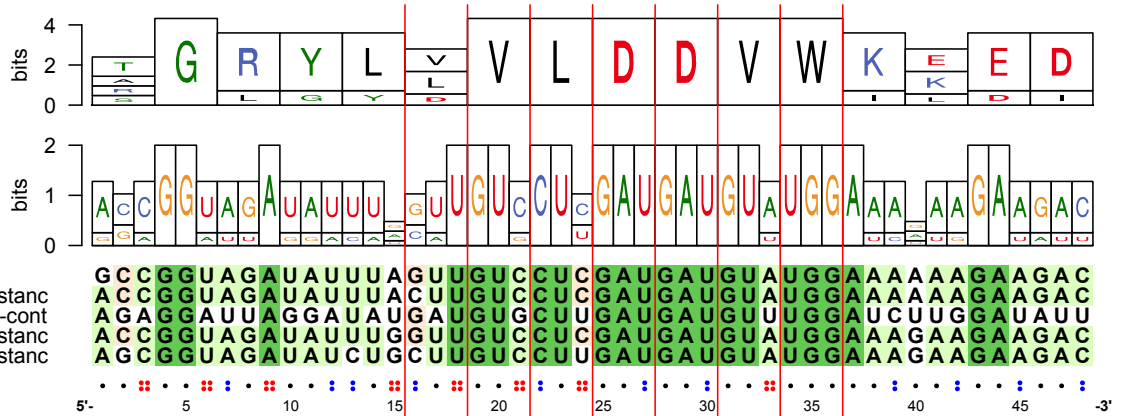
Perc. ID

■	>80%
■	>60%
■	>40%
■	<40%

Target count: 5

Best Allenscore

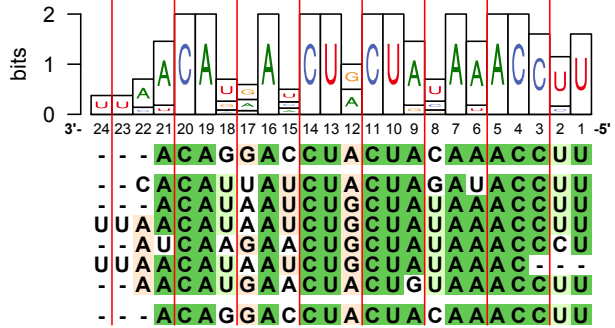
3.0	AT5G43470	RPP8
3.0	AT5G48620	Disease_resistanc
3.0	AT1G51550	Kelch_repeat-cont
3.0	AT5G35450	Disease_resistanc
3.0	AT1G53350	Disease_resistanc



SupFam_112

1.2
log10
RPM
-0.3

- Cl_cgr-dp_478
- Cl_cgr-pm_1199
- Cl_cgr-pm_1323
- Cl_cgr-pm_5749
- Cl_cgr-pm_13751
- Cl_cgr-pm_37150
- Cl_cgr-pm_56897
- Cl_cgr-mass_6857



Perc. ID

>80%
>60%
>40%
<40%

