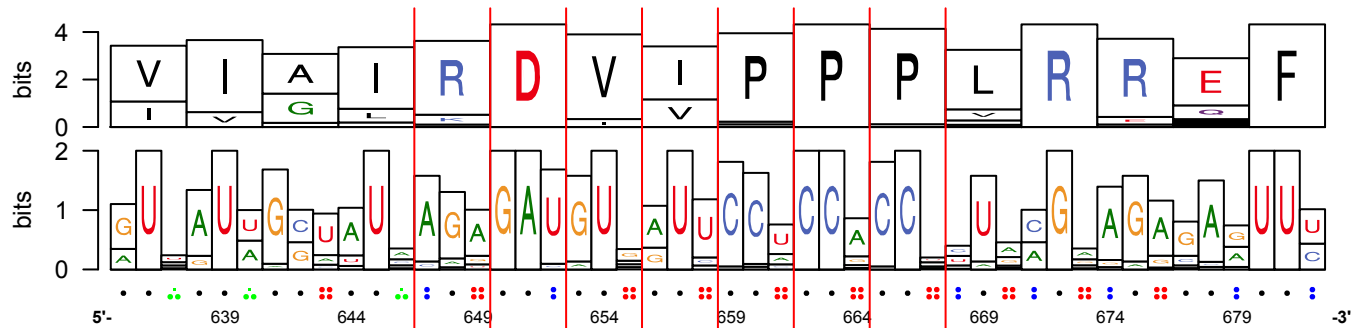
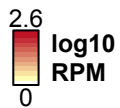


AT3G45640 - MPK3

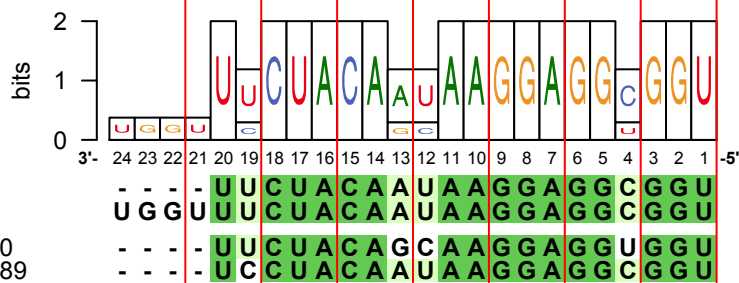
35/36 homologs found in phytozome eudicots containing targetsite



SupFam_203



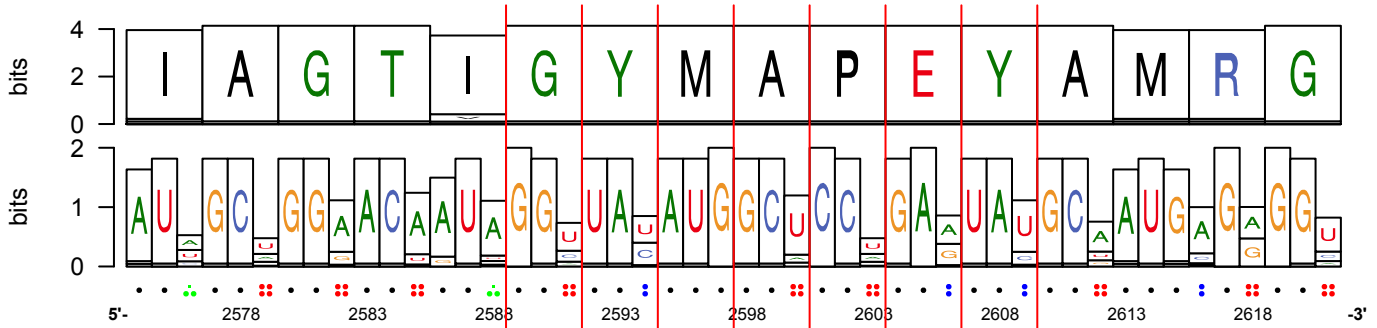
- Cl_cgr-dp_22
- Cl_cgr-dp_26933
- Cl_cgr-mass_1260
- Cl_cgr-mass_18589



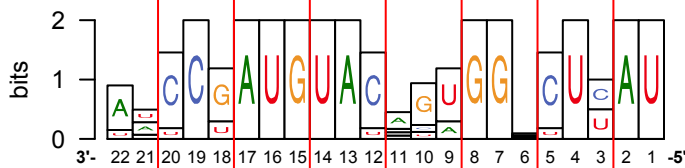
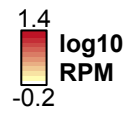
Perc. ID

- >80%
- >60%
- >40%
- <40%

AT1G53440 - Leucine-rich_repeat_transmembrane_protein_kinase
36/36 homologs found in phytozome eudicots containing targetsite



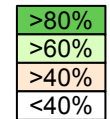
SupFam_59



- Cl_cgr-pm_346
- Cl_cgr-pm_4710
- Cl_cgr-pm_45586
- Cl_cgr-mass_517
- Cl_cgr-mass_750
- Cl_cgr-mass_2756
- Cl_cgr-mass_20246
- Cl_cgr-mass_31780

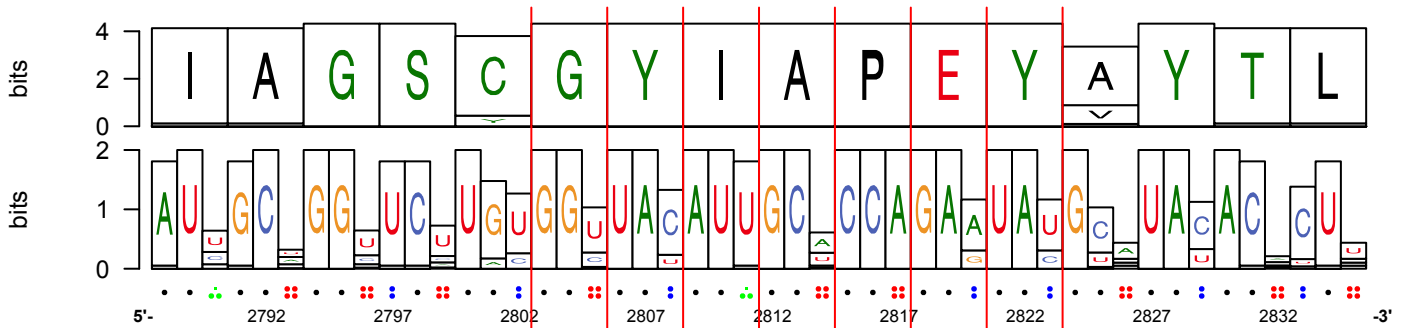
3'	22	21	20	19	18	17	16	15	14	13	12	11	10	9	8	7	6	5	4	3	2	1	-5'
	A	A	C	C	G	A	U	G	U	A	C	A	G	U	G	G	G	C	U	C	A	U	
	-	C	C	G	A	U	G	U	A	C	A	A	U	G	G	U	C	C	U	U	A	U	
	-	-	U	C	G	A	U	G	U	A	C	A	G	U	G	G	G	C	U	C	A	U	
	A	A	C	C	G	A	U	G	U	A	C	A	G	U	G	G	A	C	U	C	A	U	
	U	U	C	C	U	A	U	G	U	A	C	U	G	U	G	G	A	C	U	U	A	U	
	A	U	C	C	G	A	U	G	U	A	C	G	G	A	G	G	U	C	U	C	A	U	
	A	A	C	C	G	A	U	G	U	A	C	A	C	A	G	G	U	U	U	A	U	A	

Perc. ID



AT4G28490 - HAE

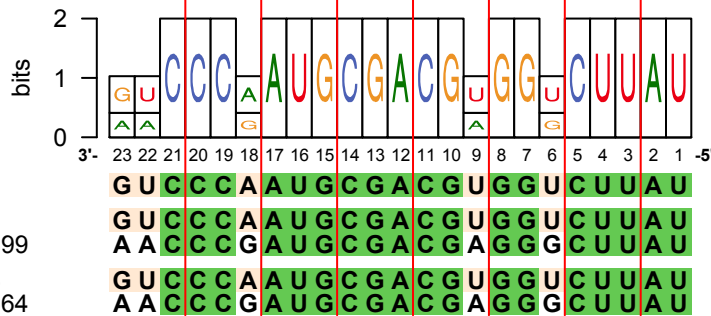
34/36 homologs found in phytozome eudicots containing targetsite



SupFam_124

1.8
log10
RPM
0.2

- Cl_ccm_818
- Cl_cpe-2015_211
- Cl_cpe-2015_16899
- Cl_cpe-2017_183
- Cl_cpe-2017_14364

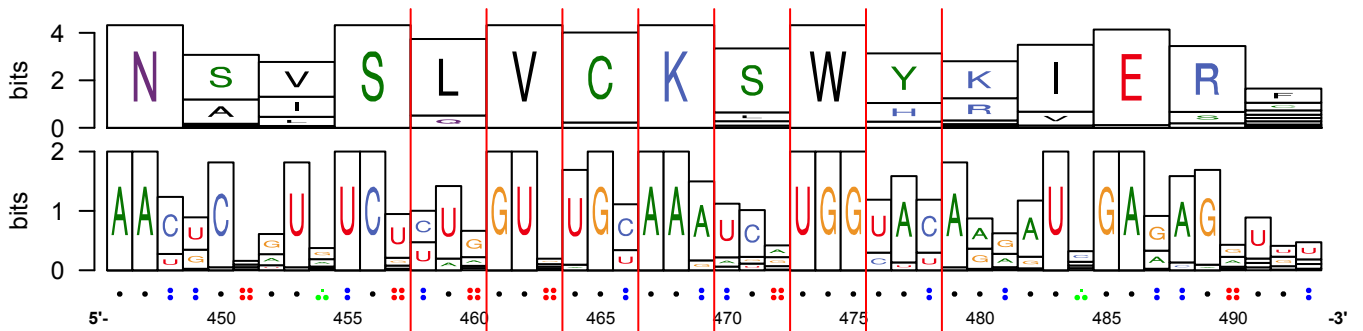


Perc. ID

- >80%
- >60%
- >40%
- <40%

AT1G12820 - AFB3

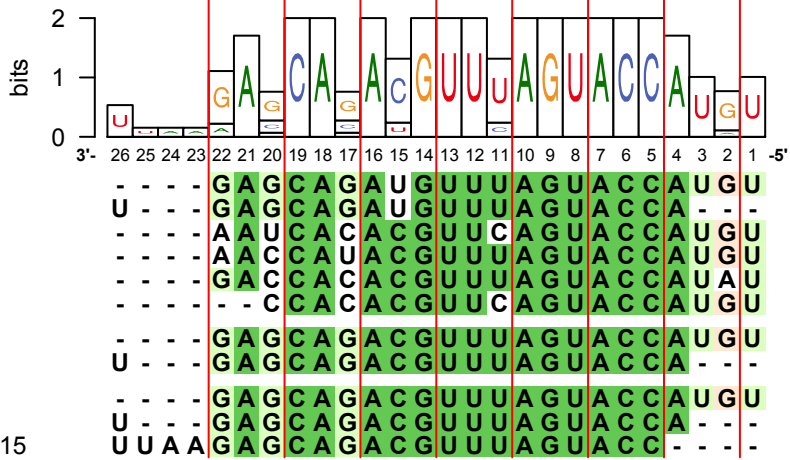
36/36 homologs found in phytozome eudicots containing targetsite



SupFam_27

3.5
log10
RPM
0.3

- Cl_ccm_2
- Cl_ccm_98
- Cl_ccm_438
- Cl_ccm_614
- Cl_ccm_13108
- Cl_ccm_51538
- Cl_cpe-2015_7
- Cl_cpe-2015_526
- Cl_cpe-2017_11
- Cl_cpe-2017_486
- Cl_cpe-2017_29015

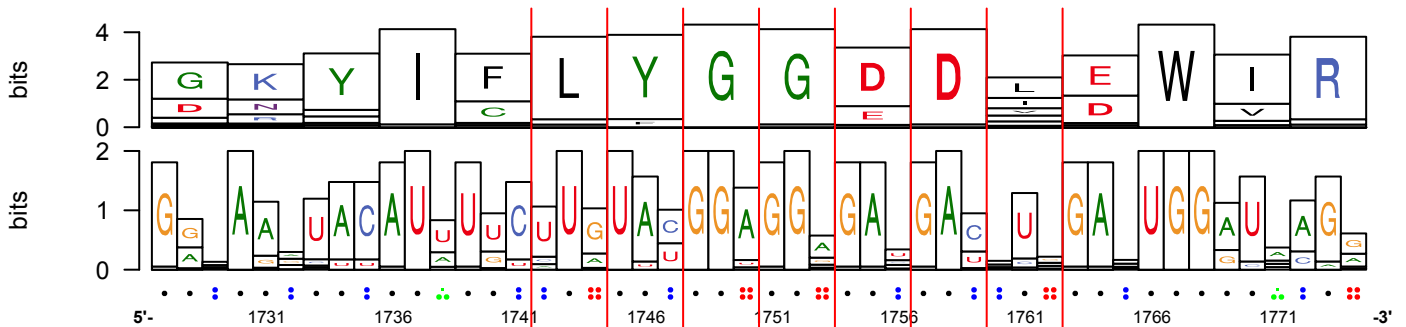


Perc. ID

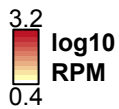
>80%
>60%
>40%
<40%

AT3G01680 - SEOR1

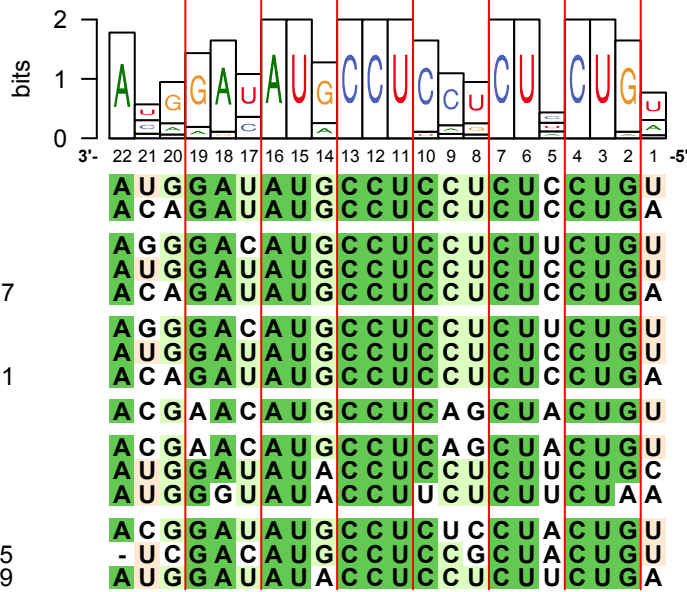
34/36 homologs found in phytozome eudicots containing targetsite



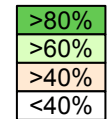
SupFam_5



- Cl_ccm_535
- Cl_ccm_6321
- Cl_cpe-2015_74
- Cl_cpe-2015_154
- Cl_cpe-2015_1417
- Cl_cpe-2017_89
- Cl_cpe-2017_181
- Cl_cpe-2017_1111
- Cl_cgr-dp_6
- Cl_cgr-pm_5
- Cl_cgr-pm_394
- Cl_cgr-pm_571
- Cl_cgr-mass_721
- Cl_cgr-mass_4275
- Cl_cgr-mass_5049

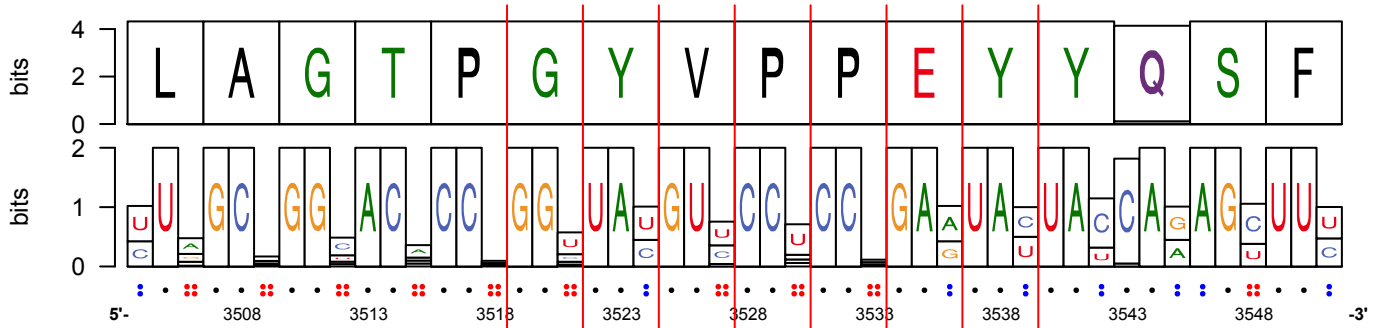


Perc. ID



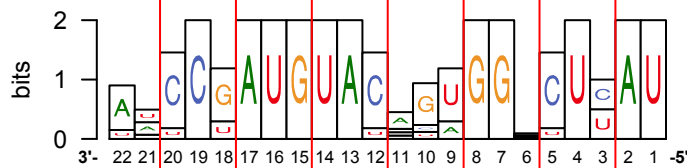
AT4G39400 - BRI1

36/36 homologs found in phytozome eudicots containing targetsite



SupFam_59

1.4
log₁₀
RPM
-0.2



- Cl_cgr-pm_346
- Cl_cgr-pm_4710
- Cl_cgr-pm_45586
- Cl_cgr-mass_517
- Cl_cgr-mass_750
- Cl_cgr-mass_2756
- Cl_cgr-mass_20246
- Cl_cgr-mass_31780

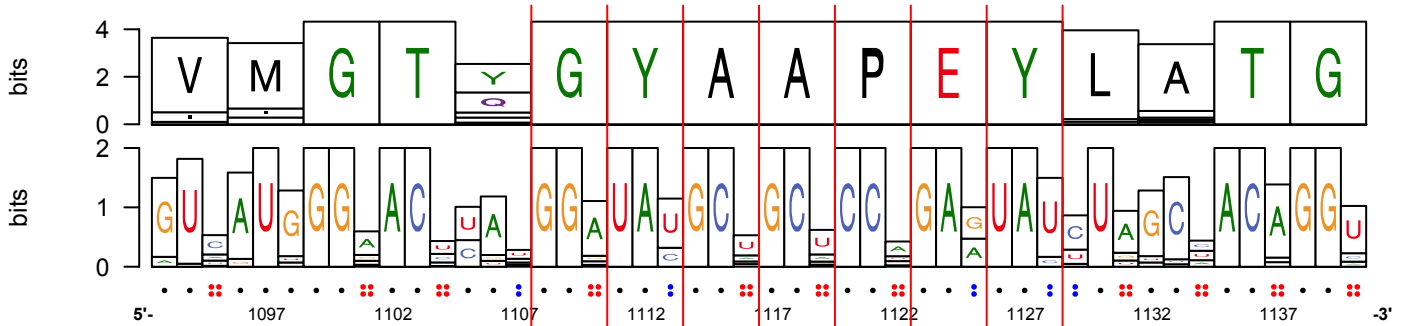
Perc. ID

- >80%
- >60%
- >40%
- <40%

A	A	C	C	G	A	U	G	U	A	C	A	G	U	G	G	G	C	U	C	A	U
-	C	C	C	G	A	U	G	U	A	C	A	U	G	G	U	C	U	U	A	U	U
-	-	U	C	G	A	U	G	U	A	C	A	G	U	G	G	G	C	U	C	A	U
A	A	C	C	G	A	U	G	U	A	C	A	G	U	G	G	A	C	U	C	A	U
U	U	C	C	U	A	U	G	U	A	C	U	G	U	G	G	A	C	U	U	A	U
A	U	C	C	G	A	U	G	U	A	C	G	G	A	G	G	U	C	U	C	A	U
A	A	C	C	G	A	U	G	U	A	C	A	C	A	G	G	U	U	U	A	U	U

AT5G02290 - NAK

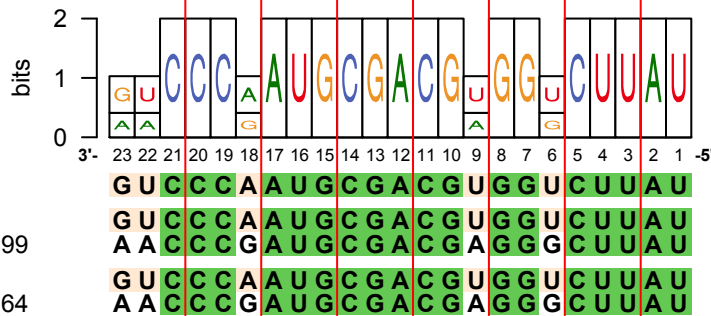
36/36 homologs found in phytozome eudicots containing targetsite



SupFam_124

1.8
log10
RPM
0.2

- Cl_ccm_818
- Cl_cpe-2015_211
- Cl_cpe-2015_16899
- Cl_cpe-2017_183
- Cl_cpe-2017_14364



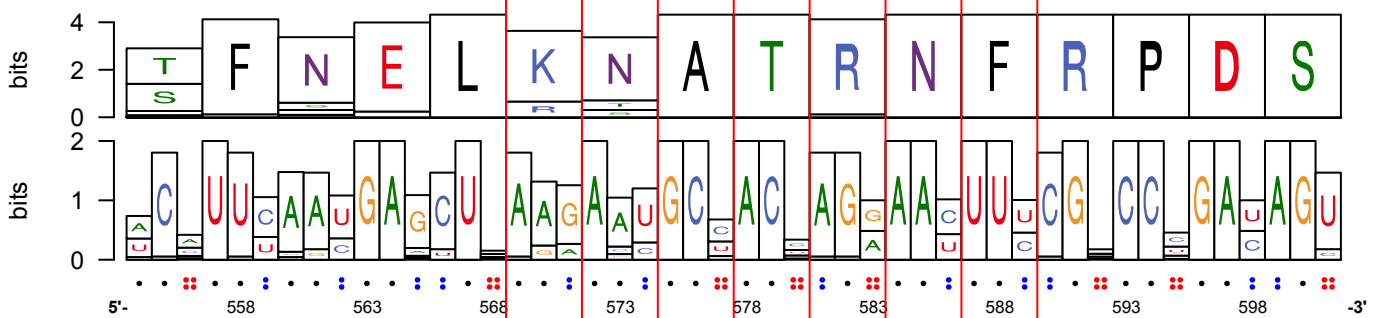
Perc. ID

- >80%
- >60%
- >40%
- <40%

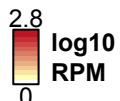
G U C C C A A U G C G A C G U G G U C U U A U
 G U C C C A A U G C G A C G U G G U C U U A U
 A A C C C G A U G C G A C G A G G G C U U A U
 G U C C C A A U G C G A C G U G G U C U U A U
 A A C C C G A U G C G A C G A G G G C U U A U

AT2G02800 - APK2B

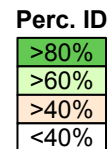
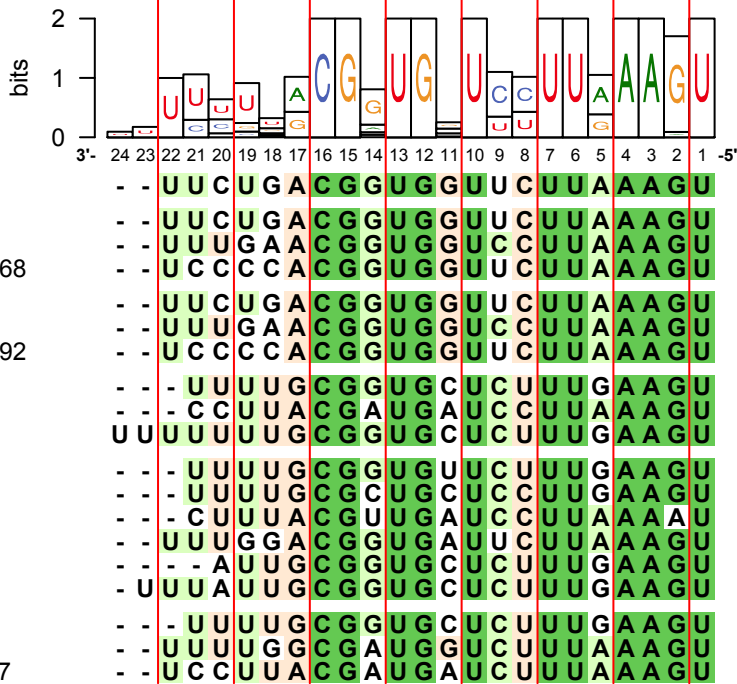
33/36 homologs found in phytozome eudicots containing targetsite



SupFam_26

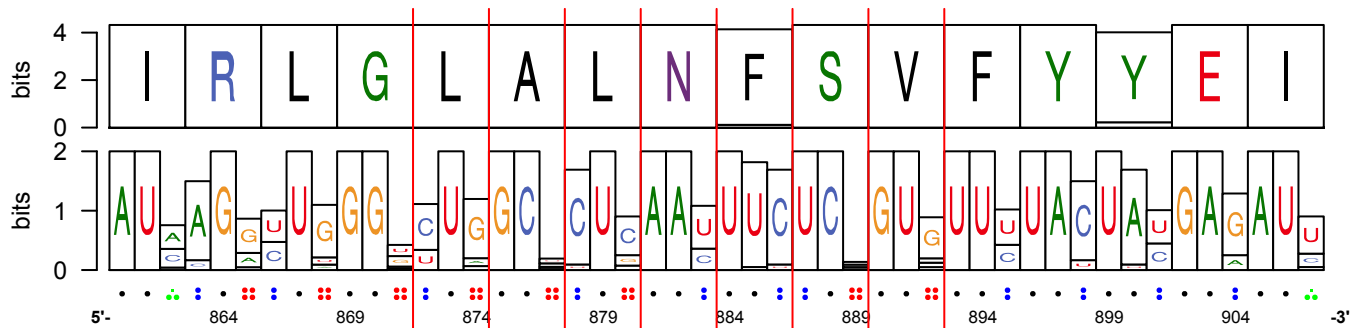


- Cl_ccm_411
- Cl_cpe-2015_76
- Cl_cpe-2015_558
- Cl_cpe-2015_16668
- Cl_cpe-2017_68
- Cl_cpe-2017_504
- Cl_cpe-2017_23892
- Cl_cgr-dp_29
- Cl_cgr-dp_224
- Cl_cgr-dp_62946
- Cl_cgr-pm_38
- Cl_cgr-pm_172
- Cl_cgr-pm_593
- Cl_cgr-pm_826
- Cl_cgr-pm_1268
- Cl_cgr-pm_23441
- Cl_cgr-mass_32
- Cl_cgr-mass_585
- Cl_cgr-mass_1107



AT5G65430 - GRF8

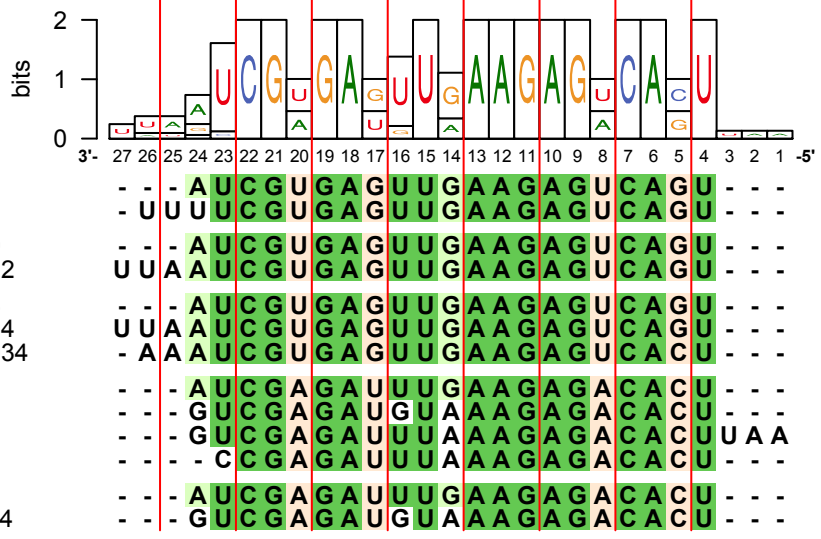
36/36 homologs found in phytozome eudicots containing targetsite



SupFam_24

2.4
log10
RPM
0.1

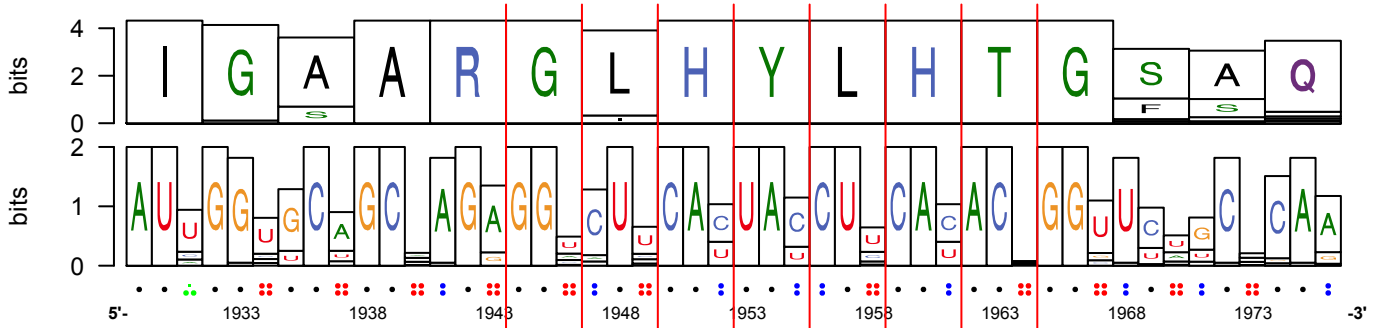
- Cl_ccm_439
- Cl_ccm_13395
- Cl_cpe-2015_129
- Cl_cpe-2015_9622
- Cl_cpe-2017_126
- Cl_cpe-2017_4564
- Cl_cpe-2017_40934
- Cl_cgr-pm_79
- Cl_cgr-pm_210
- Cl_cgr-pm_32381
- Cl_cgr-pm_34421
- Cl_cgr-mass_200
- Cl_cgr-mass_1414



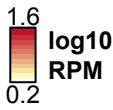
Perc. ID

- >80%
- >60%
- >40%
- <40%

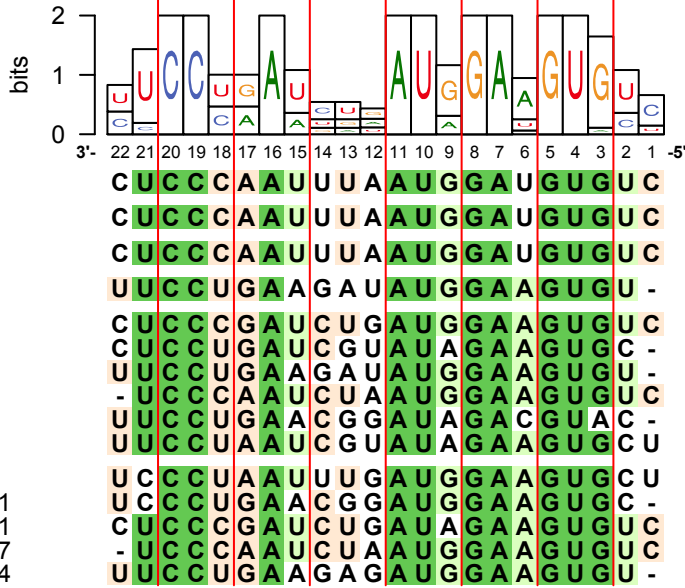
AT5G24010 - Protein_kinase_superfamily_protein
36/36 homologs found in phytozome eudicots containing targetsite



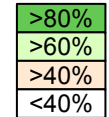
SupFam_49



- Cl_ccm_1892
- Cl_cpe-2015_368
- Cl_cpe-2017_333
- Cl_cgr-dp_14631
- Cl_cgr-pm_329
- Cl_cgr-pm_652
- Cl_cgr-pm_1330
- Cl_cgr-pm_1915
- Cl_cgr-pm_8463
- Cl_cgr-pm_24876
- Cl_cgr-mass_861
- Cl_cgr-mass_1371
- Cl_cgr-mass_1911
- Cl_cgr-mass_3397
- Cl_cgr-mass_5064

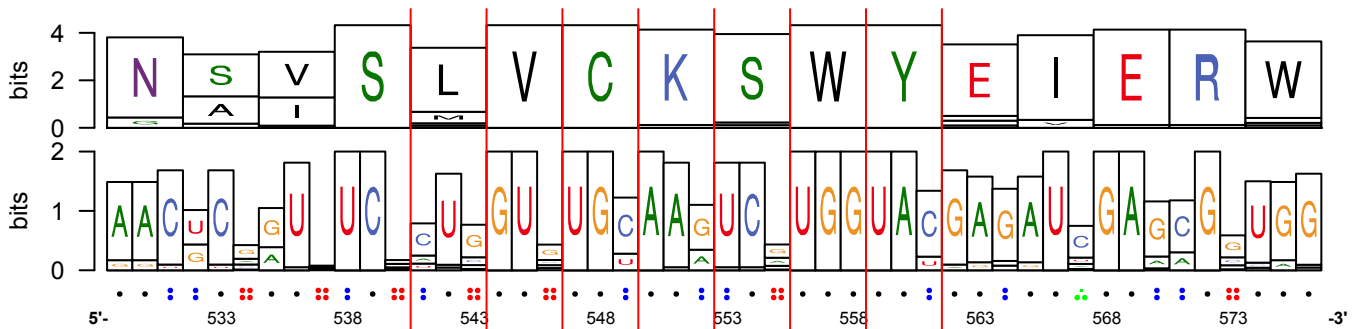


Perc. ID

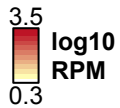


AT3G62980 - TIR1

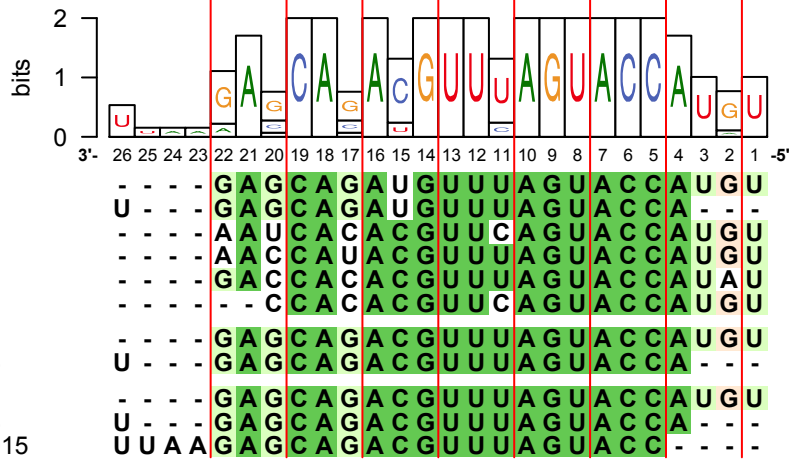
35/36 homologs found in phytozome eudicots containing targetsite



SupFam_27



- Cl_ccm_2
- Cl_ccm_98
- Cl_ccm_438
- Cl_ccm_614
- Cl_ccm_13108
- Cl_ccm_51538
- Cl_cpe-2015_7
- Cl_cpe-2015_526
- Cl_cpe-2017_11
- Cl_cpe-2017_486
- Cl_cpe-2017_29015

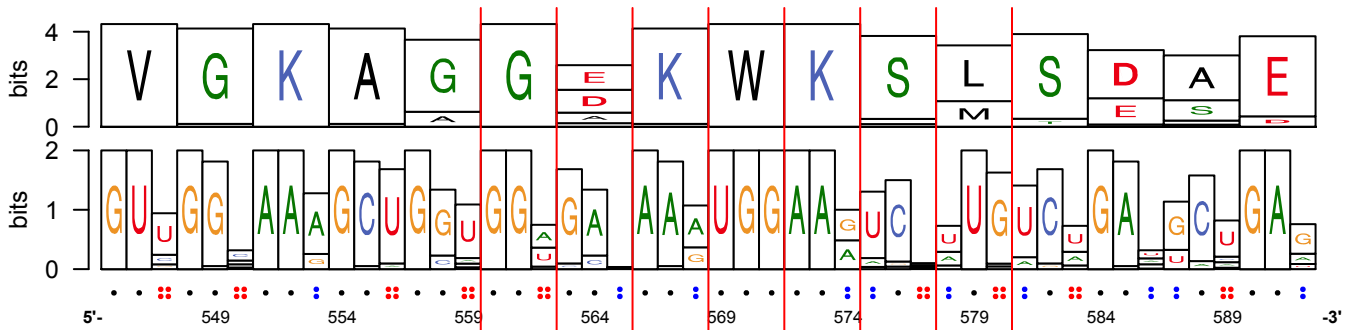


Perc. ID

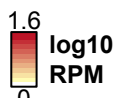
>80%
>60%
>40%
<40%

AT1G20696 - HMGB3

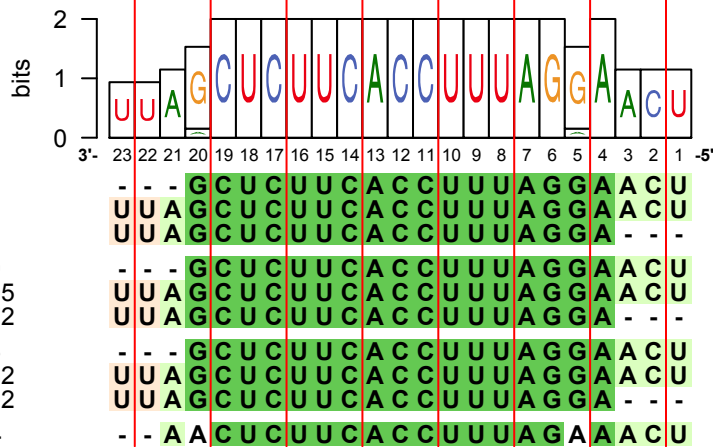
35/36 homologs found in phytozome eudicots containing targetsite



SupFam_20



- CI_ccm_1979
- CI_ccm_4973
- CI_ccm_31175
- CI_cpe-2015_329
- CI_cpe-2015_1105
- CI_cpe-2015_8072
- CI_cpe-2017_445
- CI_cpe-2017_1282
- CI_cpe-2017_6102
- CI_cgr-pm_14644

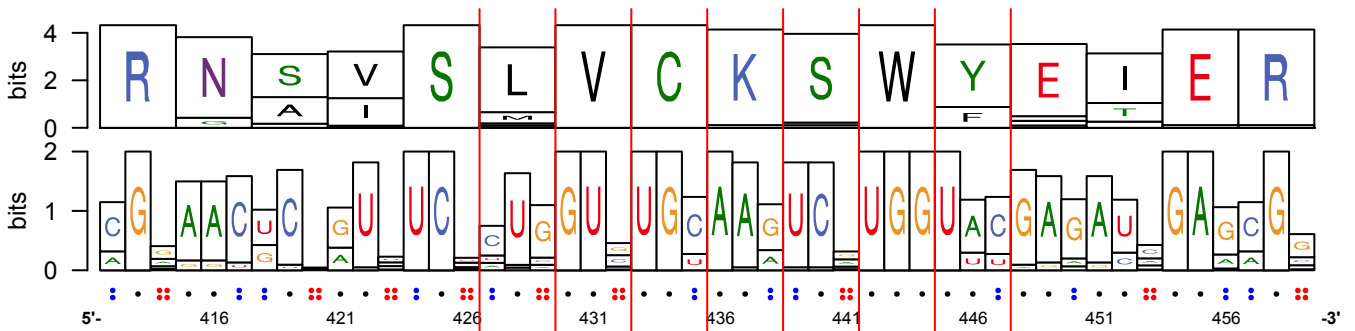


Perc. ID

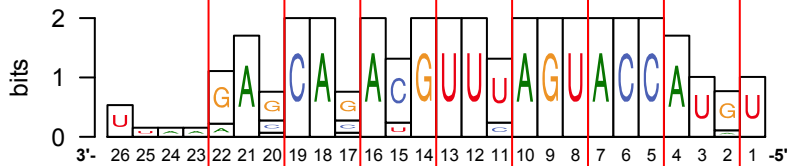
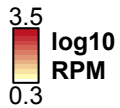
- >80%
- >60%
- >40%
- <40%

AT4G03190 - AFB1

36/36 homologs found in phytozome eudicots containing targetsite



SupFam_27



- Cl_ccm_2
- Cl_ccm_98
- Cl_ccm_438
- Cl_ccm_614
- Cl_ccm_13108
- Cl_ccm_51538
- Cl_cpe-2015_7
- Cl_cpe-2015_526
- Cl_cpe-2017_11
- Cl_cpe-2017_486
- Cl_cpe-2017_29015

```

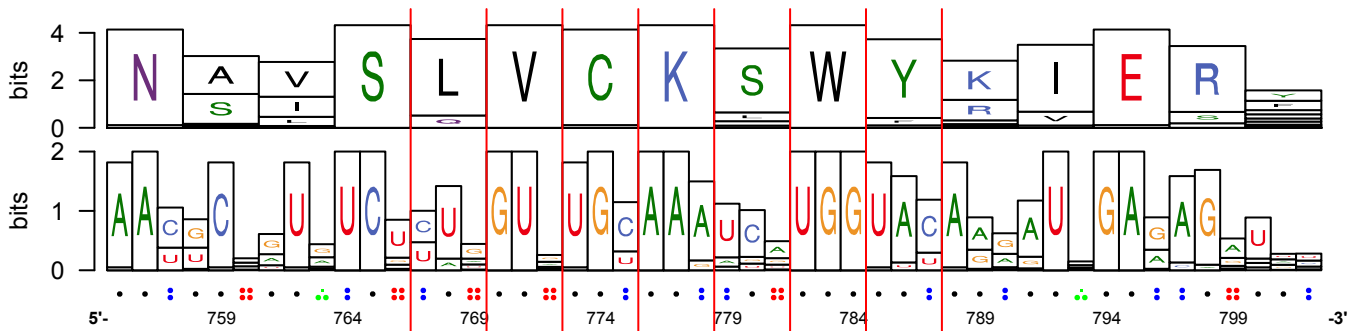
3'- 26 25 24 23 22 21 20 19 18 17 16 15 14 13 12 11 10 9 8 7 6 5 4 3 2 1 -5'
- - - - G A G C A G A U G U U U A G U A C C A U G U
U - - - G A G C A G A U G U U U A G U A C C A - - -
- - - - A A U C A C A C G U U U A G U A C C A U G U
- - - - A A C C A U A C G U U U A G U A C C A U G U
- - - - G A C C A C A C G U U U A G U A C C A U A U
- - - - - - C C A C A C G U U C A G U A C C A U G U
- - - - G A G C A G A C G U U U A G U A C C A U G U
U - - - G A G C A G A C G U U U A G U A C C A - - -
- - - - G A G C A G A C G U U U A G U A C C A U G U
U - - - G A G C A G A C G U U U A G U A C C A - - -
U U A A G A G C A G A C G U U U A G U A C C - - -
    
```

Perc. ID

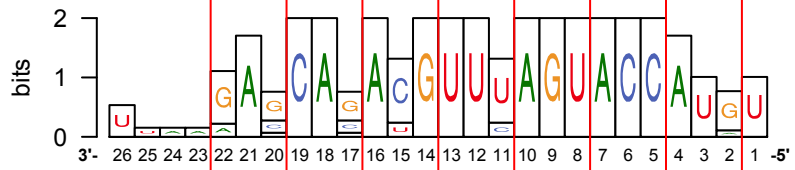
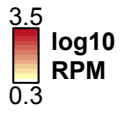
>80%
>60%
>40%
<40%

AT3G26810 - AFB2

36/36 homologs found in phytozome eudicots containing targetsite



SupFam_27



- Cl_ccm_2
- Cl_ccm_98
- Cl_ccm_438
- Cl_ccm_614
- Cl_ccm_13108
- Cl_ccm_51538
- Cl_cpe-2015_7
- Cl_cpe-2015_526
- Cl_cpe-2017_11
- Cl_cpe-2017_486
- Cl_cpe-2017_29015

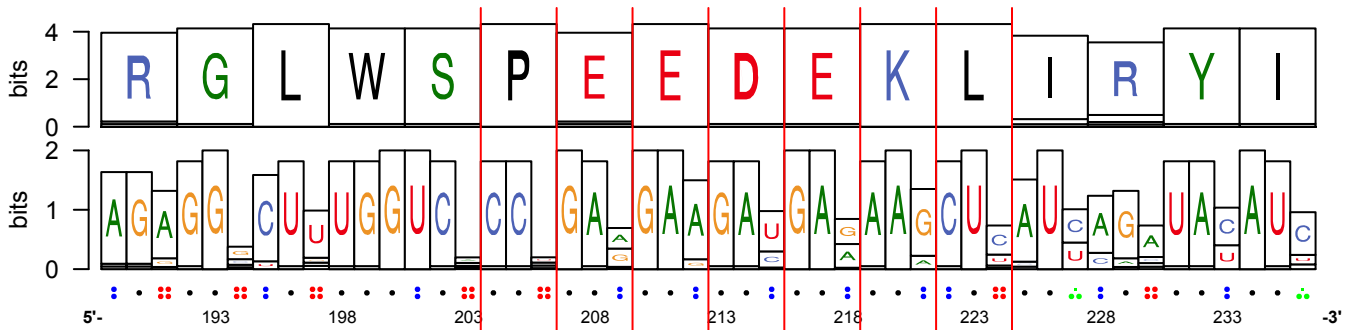
-	-	-	-	G	A	G	C	A	G	A	U	G	U	U	U	A	G	U	A	C	C	A	U	G	U
U	-	-	-	G	A	G	C	A	G	A	U	G	U	U	U	A	G	U	A	C	C	A	-	-	-
-	-	-	-	A	A	U	C	A	C	A	C	G	U	U	C	A	G	U	A	C	C	A	U	G	U
-	-	-	-	A	A	C	C	A	U	A	C	G	U	U	U	A	G	U	A	C	C	A	U	G	U
-	-	-	-	G	A	C	C	A	C	A	C	G	U	U	C	A	G	U	A	C	C	A	U	G	U
-	-	-	-	-	-	C	C	A	C	A	C	G	U	U	C	A	G	U	A	C	C	A	U	G	U
-	-	-	-	G	A	G	C	A	G	A	C	G	U	U	U	A	G	U	A	C	C	A	U	G	U
U	-	-	-	G	A	G	C	A	G	A	C	G	U	U	U	A	G	U	A	C	C	A	-	-	-
U	U	A	A	G	A	G	C	A	G	A	C	G	U	U	U	A	G	U	A	C	C	A	-	-	-

Perc. ID

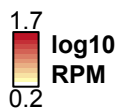
>80%
>60%
>40%
<40%

AT1G63910 - AtMYB103

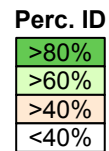
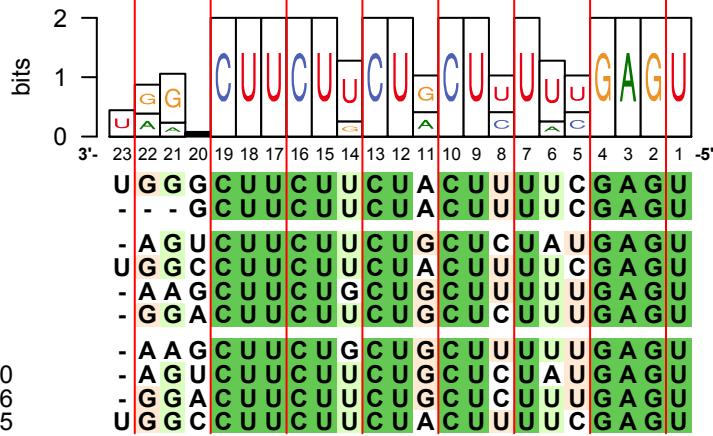
36/36 homologs found in phytozome eudicots containing targetsite



SupFam_37

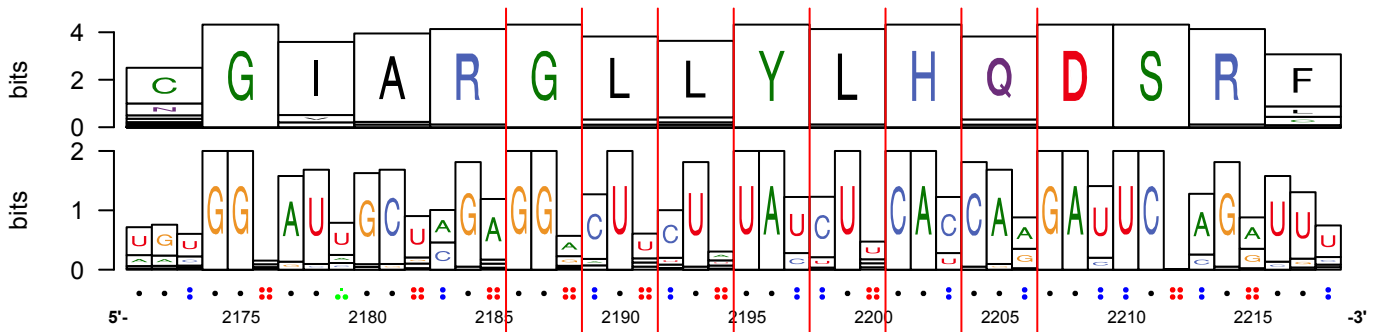


- Cl_cgr-dp_279
- Cl_cgr-dp_37384
- Cl_cgr-pm_1066
- Cl_cgr-pm_3376
- Cl_cgr-pm_4955
- Cl_cgr-pm_5111
- Cl_cgr-mass_287
- Cl_cgr-mass_2920
- Cl_cgr-mass_3016
- Cl_cgr-mass_4415

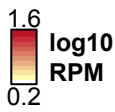


AT1G65800 - RK2

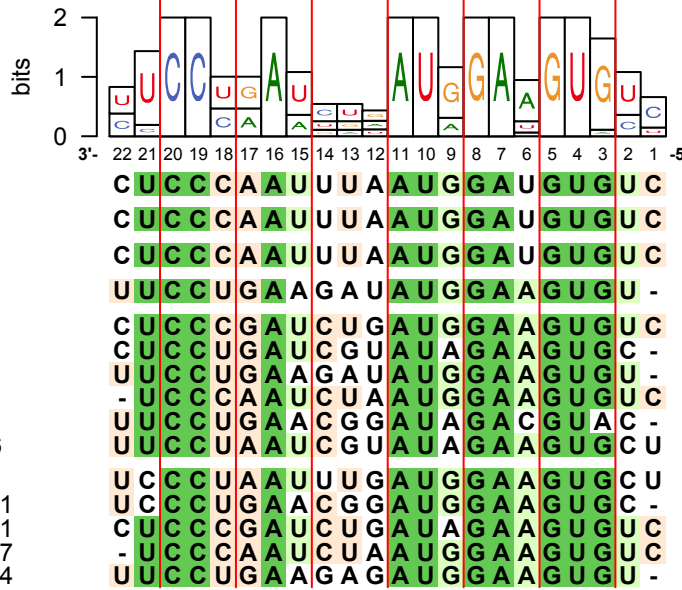
35/36 homologs found in phytozome eudicots containing targetsite



SupFam_49



- Cl_ccm_1892
- Cl_cpe-2015_368
- Cl_cpe-2017_333
- Cl_cgr-dp_14631
- Cl_cgr-pm_329
- Cl_cgr-pm_652
- Cl_cgr-pm_1330
- Cl_cgr-pm_1915
- Cl_cgr-pm_8463
- Cl_cgr-pm_24876
- Cl_cgr-mass_861
- Cl_cgr-mass_1371
- Cl_cgr-mass_1911
- Cl_cgr-mass_3397
- Cl_cgr-mass_5064

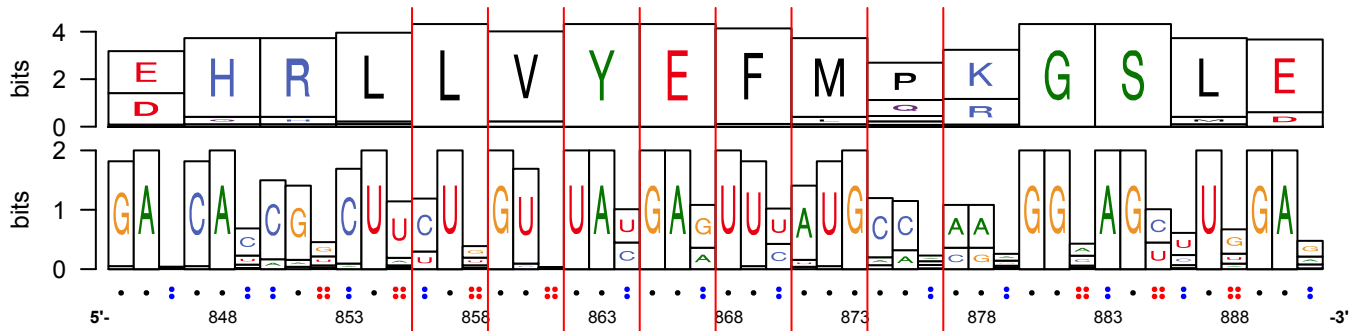


Perc. ID

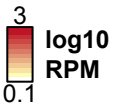
- >80%
- >60%
- >40%
- <40%

AT2G39660 - BIK1

36/36 homologs found in phytozome eudicots containing targetsite



SupFam_1



- Cl_ccm_7
- Cl_ccm_871
- Cl_ccm_4559
- Cl_ccm_7146
- Cl_ccm_27265
- Cl_cpe-2015_5
- Cl_cpe-2015_114
- Cl_cpe-2015_1077
- Cl_cpe-2015_2178
- Cl_cpe-2015_4852
- Cl_cpe-2015_20147
- Cl_cpe-2017_9
- Cl_cpe-2017_194
- Cl_cpe-2017_665
- Cl_cpe-2017_2071
- Cl_cpe-2017_5671
- Cl_cpe-2017_33377
- Cl_cgr-pm_271
- Cl_cgr-pm_808
- Cl_cgr-pm_1040
- Cl_cgr-pm_8755
- Cl_cgr-pm_35307
- Cl_cgr-mass_914
- Cl_cgr-mass_2085
- Cl_cgr-mass_7885

