

Study Sites

Northern Cities

- New Delhi (ND)
- Amritsar, Punjab (PB)
- Ghaziabad, Uttar Pradesh (UP)
- Jaipur, Rajasthan (RJ)
- Faridabad, Haryana (HY)

Northeastern Cities

- Guwahati, Assam (AS)
- Imphal, Manipur (MP)
- Aizawl, Mizoram (MZ)

Eastern Cities

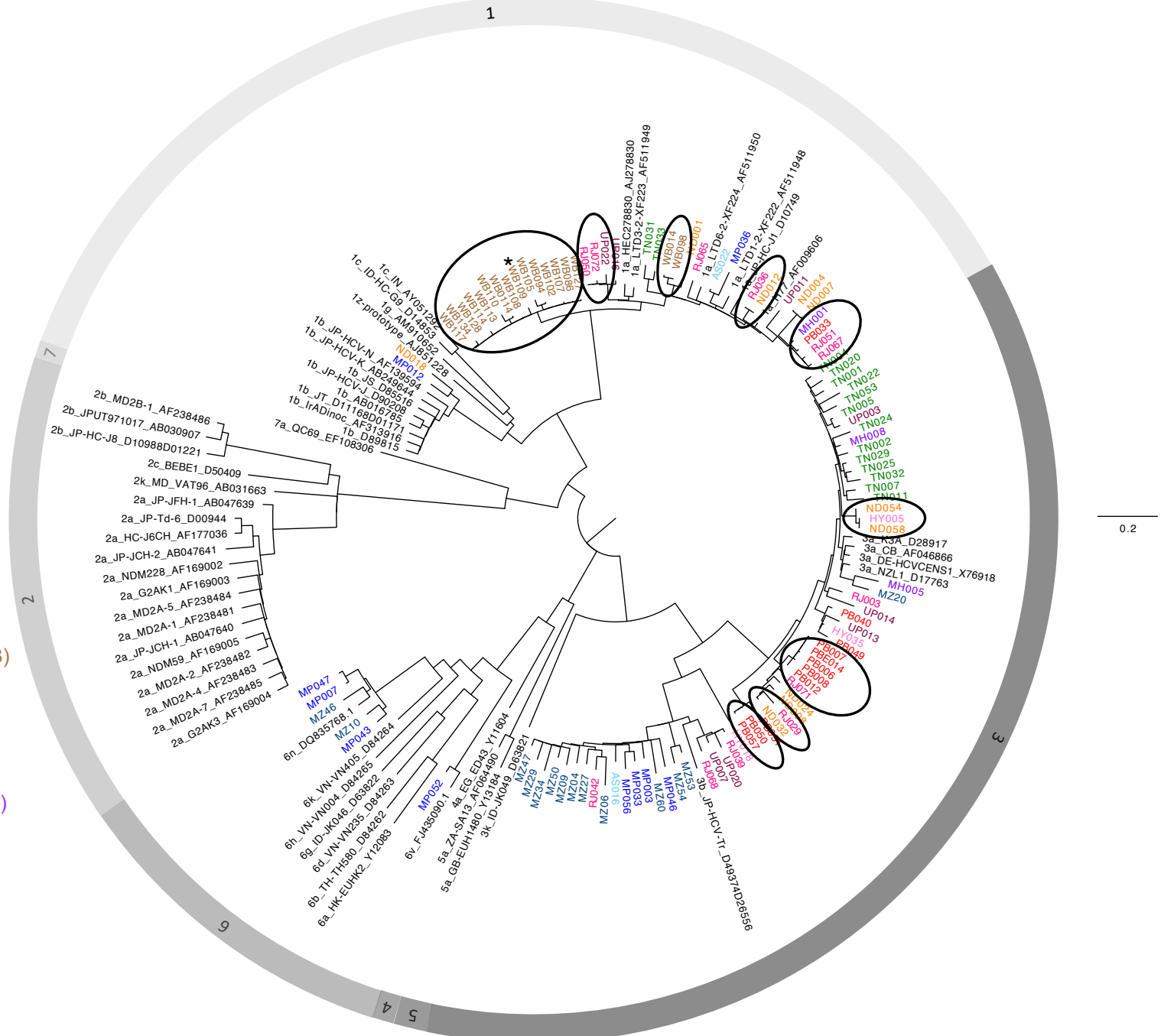
- Kolkatta, West Bangal (WB)

Southern Cities

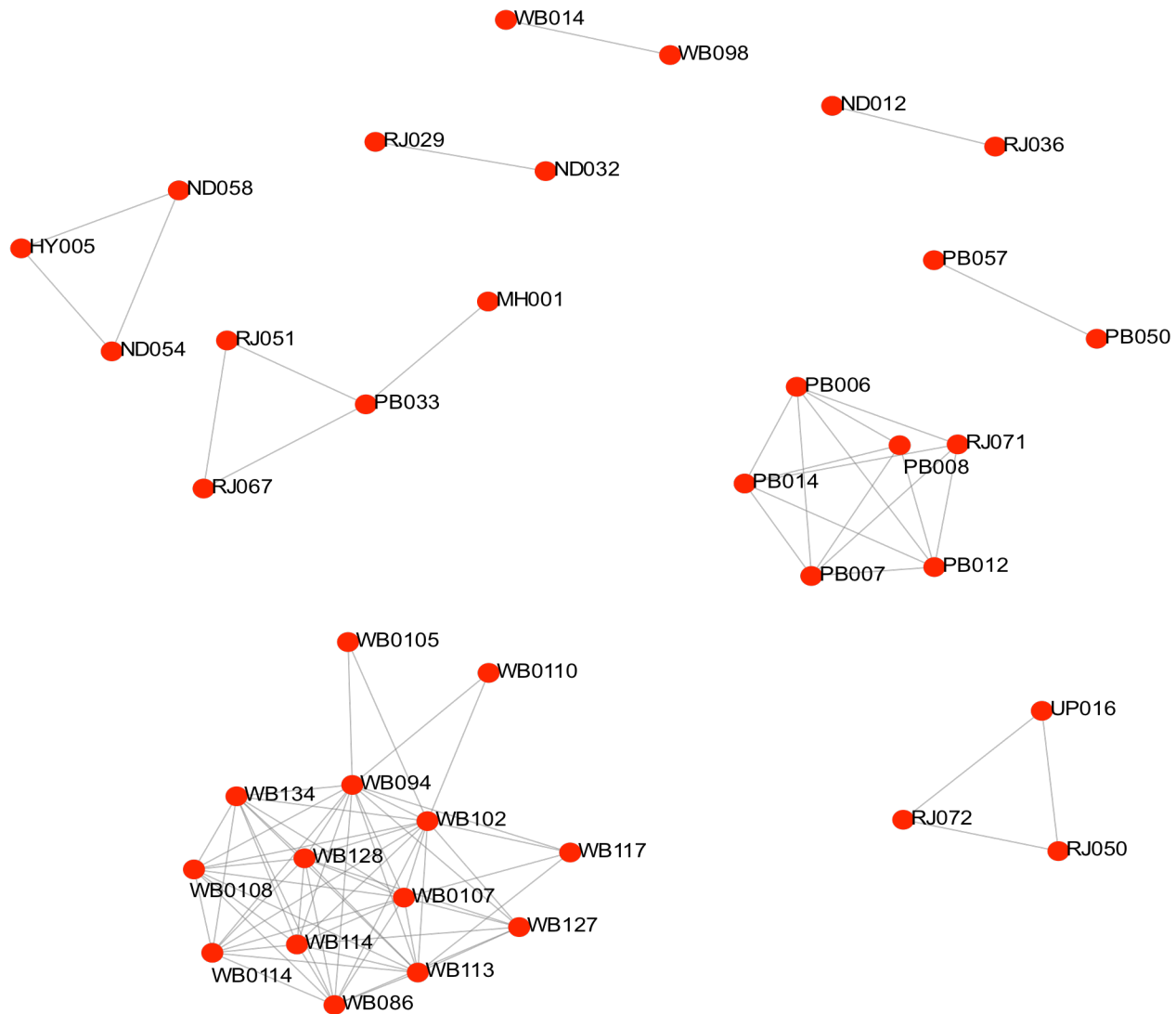
- Chennai, Tamil Nadu (TN)

Western Cities

- Mumbai, Maharashtra (MH)



Online Resource 2. Phylogenetic tree of HCV sequences from 105 participants in 8 study sites with clusters designation. Phylogenetic tree was inferred by maximum-likelihood reconstruction with 1000 bootstrap replicates based on the nucleotide alignment of the core/E1 sequences as implemented in the MEGA version 6 package. Clusters were determined using a genetic distance threshold of 4% using MicrobeTRACE v1.9



Online Resource 3. Genetic clusters identified using a genetic distance threshold of 4% (MicrobeTRACE version 1.9)