

Study of temporal variability of salivary cortisol and cortisone by LC-MS/MS using a new atmospheric pressure ionization source

Jelena Bakusic^{1*}, Siemon De Nys², Matteo Creta¹, Lode Godderis^{1,3}, Radu Corneliu Duca^{1,4}

¹ *Environment and Health, Department of Public Health and Primary Care, KU Leuven, Kapucijnenvoer 35, blok d – box 7001, 3000 Leuven, Belgium. jelena.bakusic@kuleuven.be, matteo.creta@kuleuven.be, lode.godderis@kuleuven.be, radu.duca@kuleuven.be*

² *Department of Oral Health Sciences, BIOMAT & University Hospitals Leuven (UZ Leuven), Dentistry, Kapucijnenvoer 7, blok a – box 7001, 3000 Leuven, Belgium. siemon.denys@kuleuven.be*

³ *IDEWE, External Service for Prevention and Protection at Work, Heverlee, Belgium*

⁴ *Unit Environmental Hygiene and Human Biological Monitoring, Department of Health Protection, National Health Laboratory, 1, Rue Louis Rech, L-3555 Dudelange, Luxembourg*

Corresponding authors:

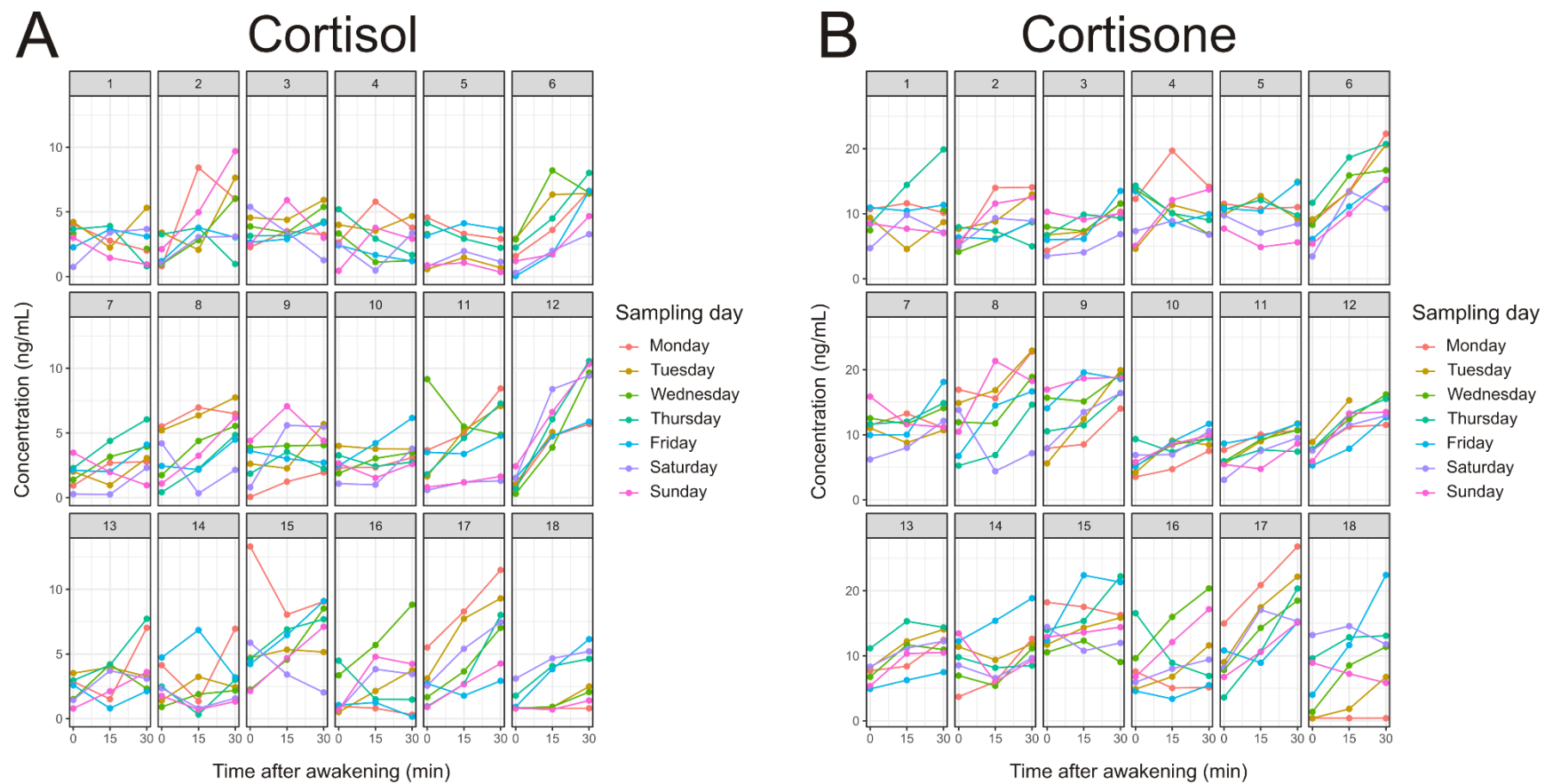
Jelena Bakusic, MD

Centre for Environment and Health,
Department of Public Health and Primary Care,
KU Leuven (University of Leuven),
Kapucijnenvoer 35, 3000 Leuven,
Belgium
E-mail: jelena.bakusic@kuleuven.be

Radu Corneliu Duca, PhD

Unit Environmental Hygiene and Human Biological Monitoring
Department of Health Protection
National Health Laboratory
1, Rue Louis Rech,
L-3555 Dudelange,
Luxembourg
E-mail: radu.duca@Ins.etat.lu

Supplementary information



Supplementary Figure 1. Overview of cortisol (A) and cortisone (B) concentrations of each participant obtained on each day over one sampling week at 0, 15 and 30 min after awakening