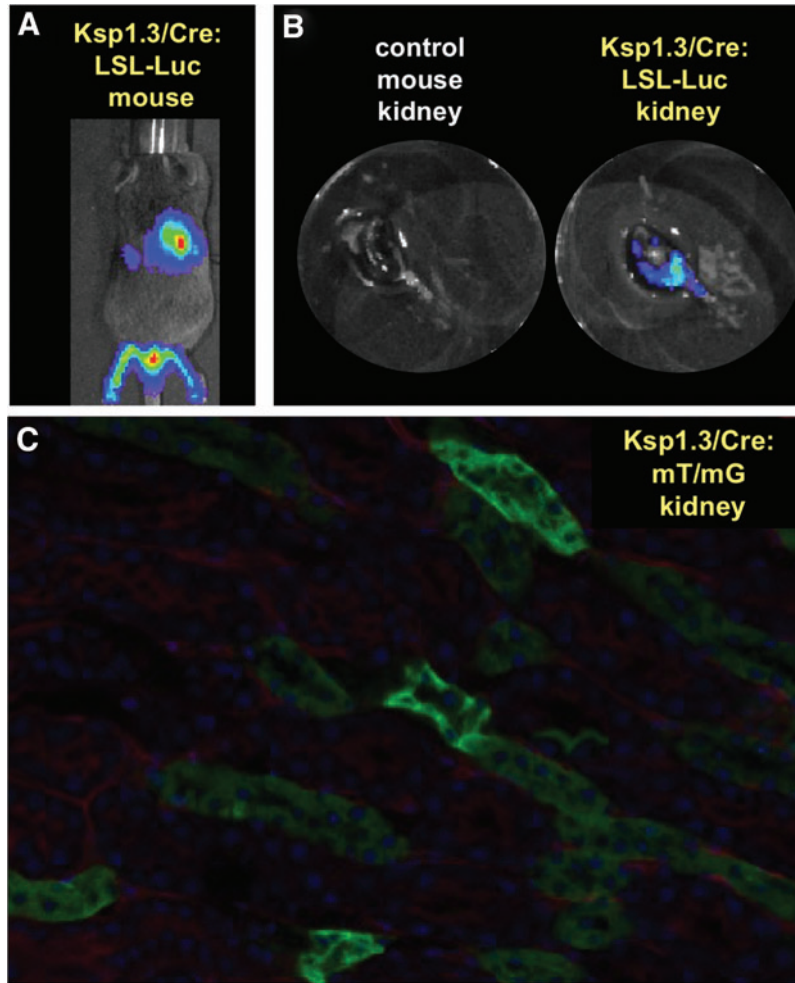


## Supplementary Data



**Supplementary Figure S1.** Ksp1.3/Cre mice crossed to LSL-Luc mice exhibit kidney luminescence, and Ksp1.3/Cre mice crossed to mT/mG mice exhibit GFP<sup>+</sup> tubules. **(A)** Hemizygous Ksp1.3/Cre mice were crossed to LSL-Luc mice and the F1's were luciferase imaged. Luciferase activity was observed in the kidneys and GU tract. **(B)** Kidneys from the F1's in Panel A were extracted and imaged. On the *left* is a kidney of a mouse that did not inherit the Ksp1.3/Cre transgene, on the *right* is the kidney of a mouse that did. **(C)** Ksp1.3/Cre mice were crossed to mT/mG mice, and a Ksp1.3/Cre<sup>+</sup> F1 kidney was sectioned to examine endogenous fluorescence. mT expression represents Cre<sup>-</sup> cells, while mG expression represents Cre<sup>+</sup> cells, i.e., tubule epithelium.

---