

Evaluation of Sucrose Laurate as an Intestinal Permeation Enhancer for Macromolecules: Ex Vivo and In Vivo Studies: Supplementary Information

Fiona McCartney, Mónica Rosa and David J. Brayden

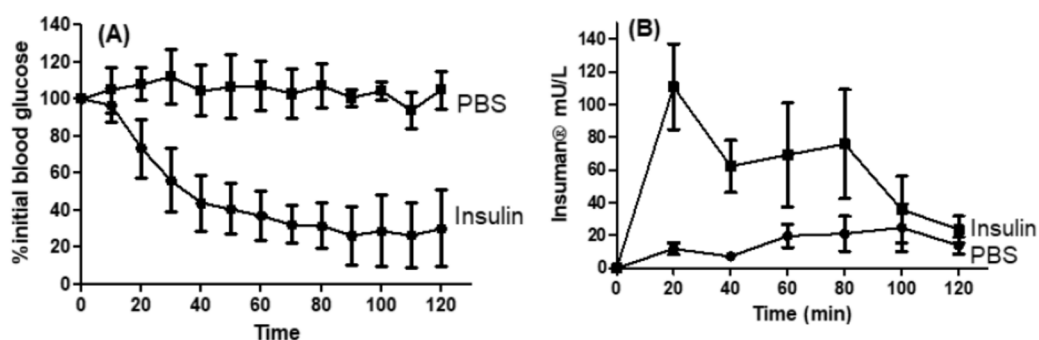


Figure S1. (A) Reduction in blood glucose after s.c. injection of insulin (1 IU/kg) or PBS. A statistically significant reduction in blood glucose was observed from 20 min onward using two-way ANOVA with Bonferroni's *post-test*; $***p < 0.001$ versus PBS, (B) Serum insulin following s.c. injection; $p < 0.01$ versus PBS from 20 min. Mean \pm SEM and $n = 6$ per group in each panel.

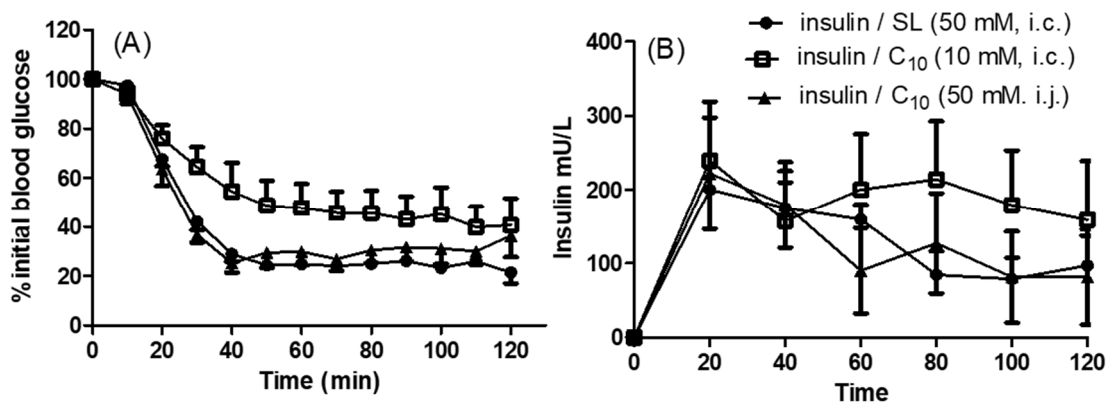


Figure S2. (A) Blood glucose, (B) Serum insulin levels after intra-colonic (i.c.) instillation of insulin/SL and insulin/C₁₀, and intra-jejunal (i.j.) instillation of insulin/C₁₀. The insulin dose was 50 IU/kg. Symbols in (B) also apply to (A). These three concentrations of SL and C₁₀ were tested along with those in Figure 7 and are shown separately here order to make Figure 7 clearer. They are included in Table 1 and in the associated statistical analyses.

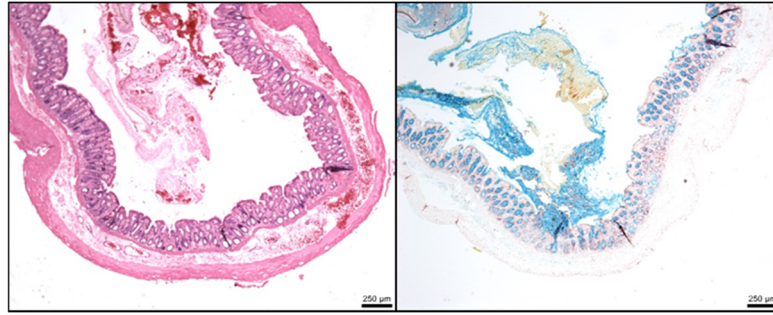


Figure S3. Representative histology obtained after i.c. instillation of insulin/C₁₀ (10 mM) after 120 min. H & E (left panel) and Alcian blue (right panel). Bar = 250 μm.

Table S1. Statistical analysis of % Initial TEER following apical addition of SL to rat colonic mucosae with respect to data in Figure 5A. Values were using two-way ANOVA with Bonferroni's *post-test*. ***p* < 0.01 and ****p* < 0.001 compared to KH buffer; ns: not significant.

Time (min)	1.5 mM SL	5 mM SL	10 mM SL	10 mM C ₁₀
0	ns	ns	ns	ns
5	***	***	***	**
10	***	***	***	***
15	***	***	***	***
20	***	***	***	***
40	***	***	***	***
60	***	***	***	***
80	***	***	***	***
100	***	***	***	***
120	***	***	***	***

Table S2. Statistical analysis of the reduction in blood glucose after i. j. instillation of insulin with SL using two-way ANOVA with Bonferroni's *post-test*. Data refers to Figure 7A. Insulin/C₁₀ was the positive control. **p* < 0.05, ***p* < 0.01 and ****p* < 0.001 compared to insulin solution control (50 IU/kg); ns: not significant.

Time (min)	PBS	Insulin/SL (50 mM)	Insulin/SL (100 mM)	Insulin/C ₁₀ (50 mM)	Insulin/C ₁₀ (100 mM)
0	ns	ns	ns	ns	ns
10	ns	ns	ns	ns	ns
20	ns	ns	*	ns	*
30	ns	*	**	***	***
40	ns	**	***	***	***
50	ns	**	***	***	***
60	ns	**	***	***	***
70	ns	**	***	***	***
80	ns	ns	**	***	***
90	ns	*	**	***	***
100	ns	ns	**	***	***
110	ns	ns	*	***	***
120	ns	ns	***	***	***

Table S3. Statistical analysis of serum insulin (mU/L) after i. j. instillation of SL with insulin using two-way ANOVA with Bonferroni's *post-test*. Data refers to Figure 7B. Insulin/C₁₀ was used as a positive control. **p* < 0.05, ***p* < 0.01 and ****p* < 0.001 compared to insulin solution controls (50 IU/kg); ns: not significant.

Time (min)	PBS	Insulin/SL (50 mM)	Insulin/SL (100 mM)	Insulin/C ₁₀ (50 mM)	Insulin/C ₁₀ (100 mM)
0	ns	ns	ns	ns	ns
20	ns	***	***	***	ns
40	ns	ns	***	*	*
60	ns	ns	*	ns	ns
80	ns	ns	ns	ns	ns
100	ns	ns	ns	ns	ns
120	ns	ns	ns	ns	ns

Table S4. Statistical analysis of blood glucose after i.c. instillation of SL with insulin using two-way ANOVA with Bonferroni's *post-test*. Data refers to Figure 7C. C₁₀ was used as a positive control. **p* < 0.05, ***p* < 0.01 and ****p* < 0.001 compared to insulin solution control (50 IU/kg); ns: not significant.

Time (min)	PBS	Insulin/SL (1 mM)	Insulin/SL (10 mM)	Insulin/SL (25 mM)	Insulin/SL (50 mM)	Insulin/C ₁₀ (10 mM)	Insulin/C ₁₀ (25 mM)
0	ns	ns	ns	ns	Ns	ns	ns
10	ns	ns	ns	ns	ns	ns	ns
20	ns	ns	*	**	ns	**	**
30	ns	**	***	***	***	***	***
40	ns	***	***	***	***	***	***
50	ns	***	***	***	***	***	***
60	ns	***	***	***	***	***	***
70	ns	***	***	***	***	***	***
80	*	**	***	***	***	***	***
90	*	**	***	***	***	***	***
100	*	***	***	***	***	***	***
110	ns	***	***	***	***	***	***
120	**	***	***	***	***	***	***

Table S5. Statistical analysis of serum insulin (mU/L) after i.c. instillation of SL with insulin using two-way ANOVA with Bonferroni's *post-test*. Data refers to Figure 7D. Insulin/C₁₀ was used as a positive control. **p* < 0.05, ***p* < 0.01 and ****p* < 0.001 compared to insulin control (50 IU/kg); ns: not significant.

Time (min)	PBS	Insulin/SL (1 mM)	Insulin/SL (10 mM)	Insulin/SL (25 mM)	Insulin/SL (50 mM)	Insulin/C ₁₀ (10 mM)	Insulin/C ₁₀ (25 mM)
0	ns	ns	ns	ns	ns	ns	ns
20	ns	ns	ns	***	**	**	ns
40	ns	ns	ns	***	*	ns	*
60	ns	ns	ns	***	*	ns	ns
80	ns	ns	ns	***	ns	*	ns
100	ns	ns	ns	ns	ns	ns	ns
120	ns	ns	ns	ns	ns	ns	ns