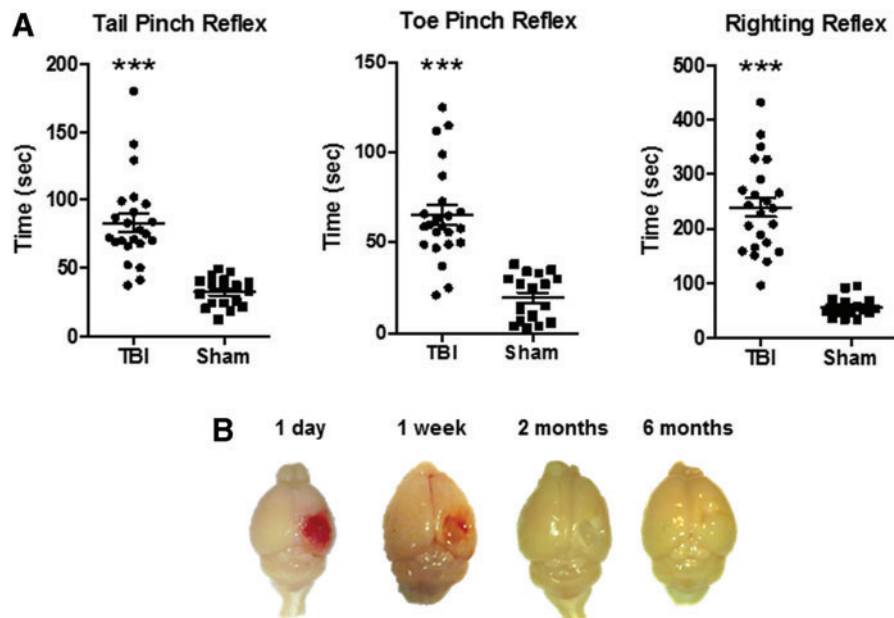


Supplementary Data



SUPPLEMENTARY FIG. S1. Traumatic brain injury (TBI)-associated impaired function and brain damage. **(A)** Mice were tested for somatosensory functions immediately after controlled cortical impact (CCI) or sham surgery by Mann-Whitney test ($***p < 0.001$). **(B)** Representative images of brain damage after CCI over the right parietal cortex in mice after one day, one week, two months, and six months post-operation are shown. Hematoma and edema are indicated transiently after impact, thereby forming a collapsed 1 mm deformation in brain at later stages.