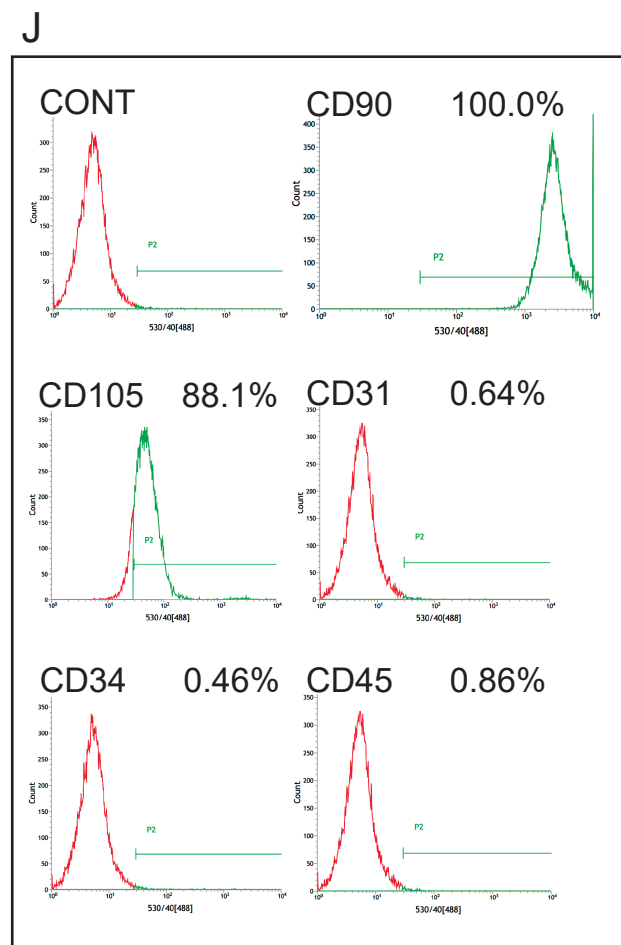
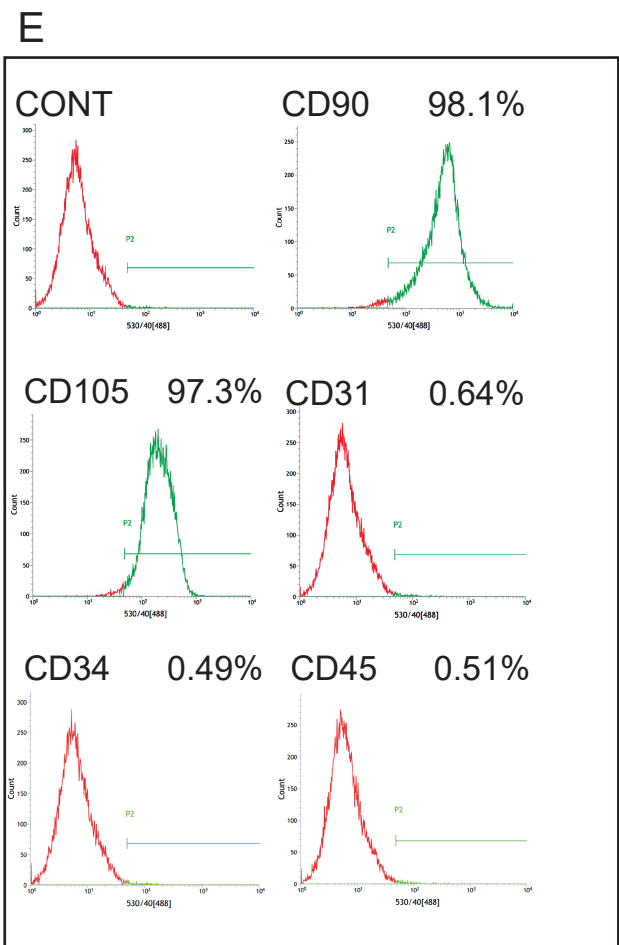
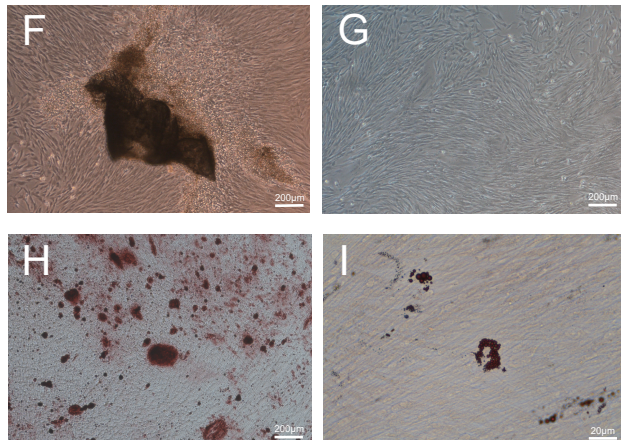
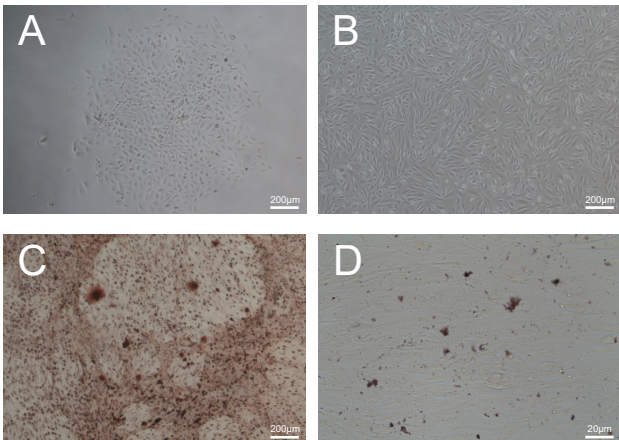
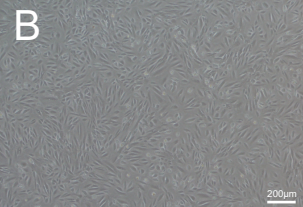


hUSCs

hPDLSCs



B



A

200µm

A phase-contrast micrograph showing a large, dense, circular cluster of cells. The cells are small and spindle-shaped, typical of fibroblasts or epithelial cells in culture. The cluster is centered in the frame. In the bottom right corner, there is a white scale bar labeled '200µm'. The letter 'A' is in the top left corner.

