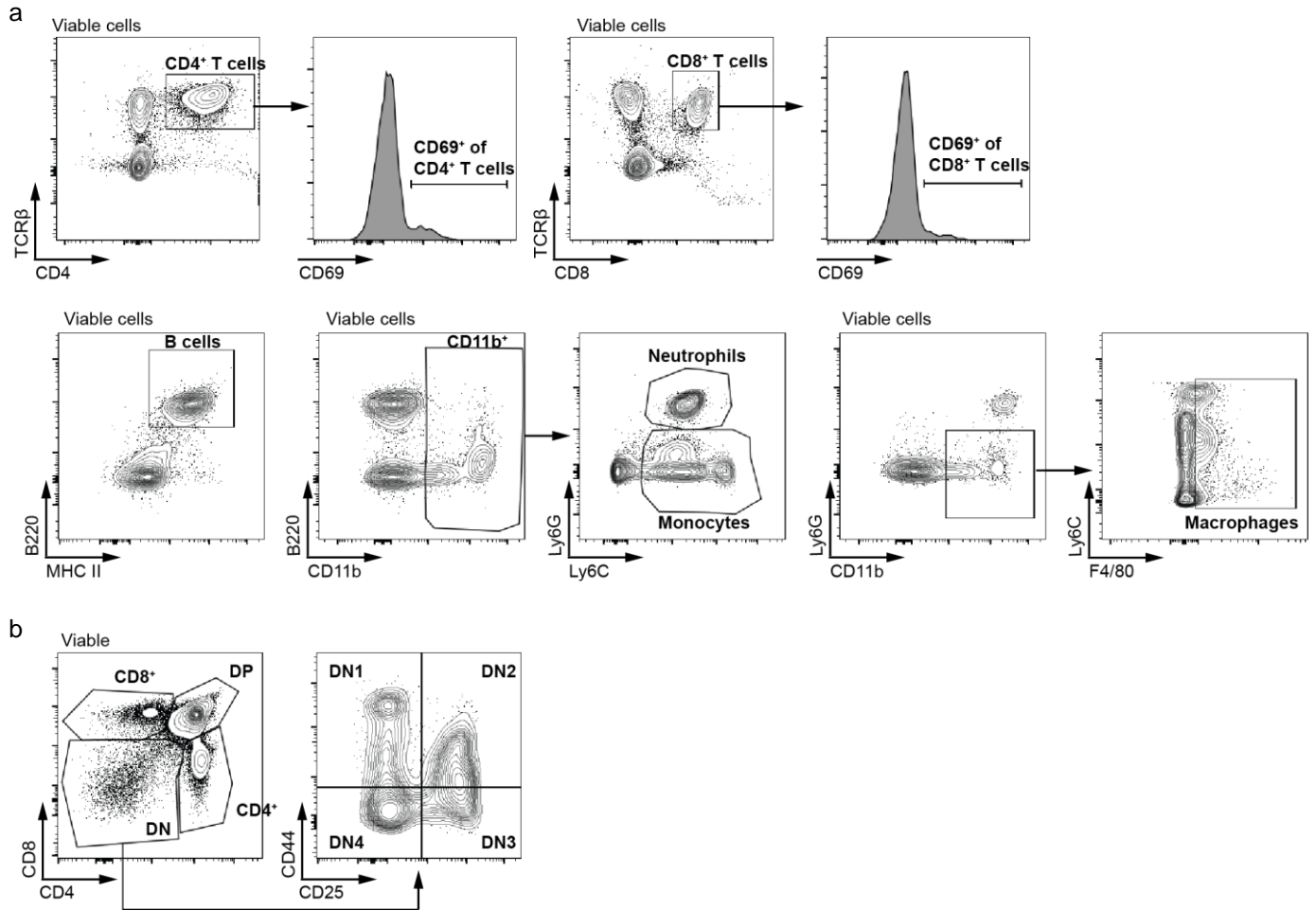
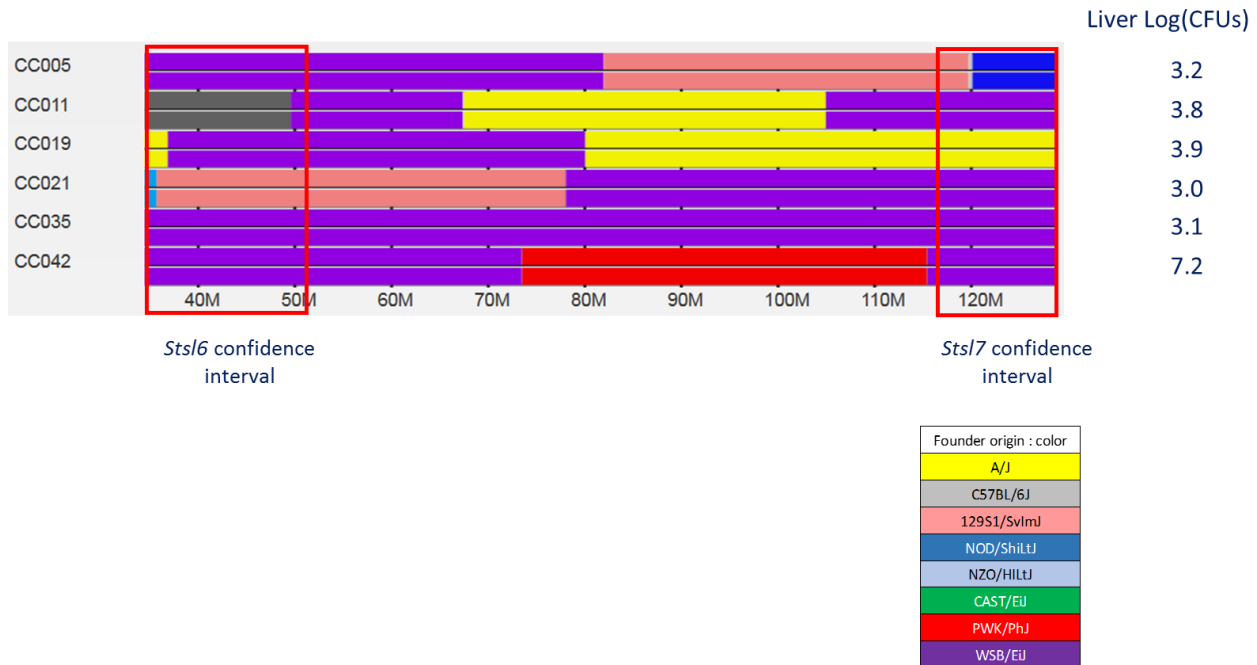


## Supplementary Figure S1



**Figure S1 | Representative flow cytometry gating schemes used for analysis of spleen and thymus.** Plots show gating used for spleen (**a**) and thymus (**b**) samples where cells shown for each plot are derived from within the gated region of the previous plot.

## Supplementary Figure S2



**Figure S2 | Susceptibility to *S. Typhimurium* of CC strains with a WSB/EiJ haplotype at either Chr 7 QTLs.** Schematic representation of the haplotype structure of CC strains carrying WSB alleles at either *Stsl6* or *Stsl7* or both QTLs. Corresponding bacterial load in liver ( $\text{LOG}_{10}$ ) at day 4 post-infection with *S. Typhimurium* (data from Zhang et al. 2018) is shown on the right. The 1.5 LOD confidence intervals of the QTLs are boxed in red. CC035 mice carry the same WSB/EiJ-derived haplotype as CC042 but show much lower bacterial load in the liver.