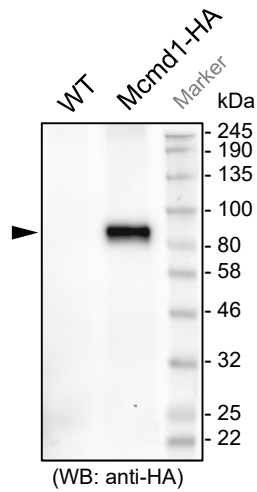
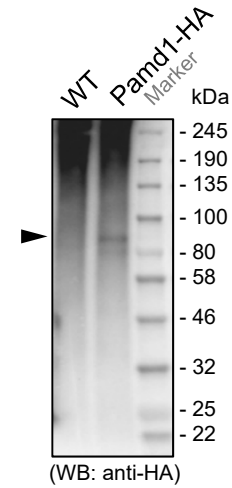
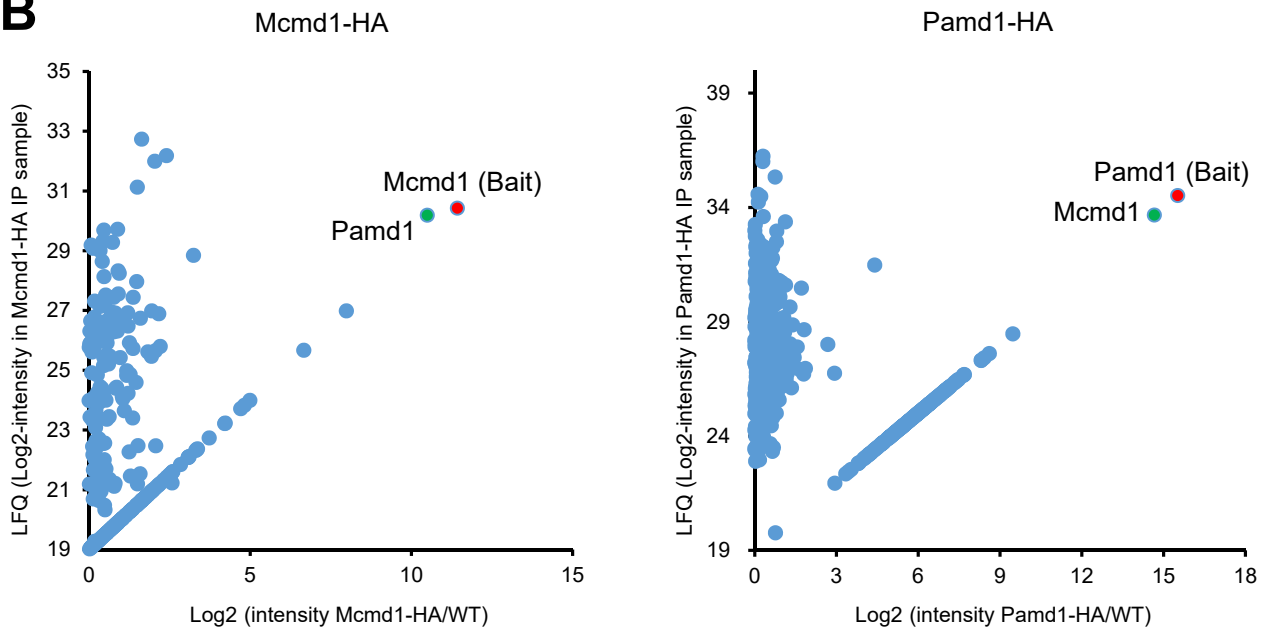


A

Mcmd1-HA: 92.6 kDa



Pamd1-HA: 89.6 kDa

B

S1 Fig. Immunoprecipitation of Mcmd1-HA and Pamd1-HA, and co-IP-MS visualization. (A) Western blotting (WB) analysis of Mcmd1-HA and Pamd1-HA immunoprecipitation samples. (B) Visualization of Mcmd1-HA and Pamd1-HA immunoprecipitation proteomics data using scatter plots. The X-axis indicates the enrichment in Mcmd1-HA or Pamd1-HA immunoprecipitation samples compared with control samples. The Y-axis indicates the normalized protein abundance in Mcmd1-HA or Pamd1-HA immunoprecipitation samples using mass spectrometry-based label-free quantification. Raw mass spectrometry data are shown in S1 Table.