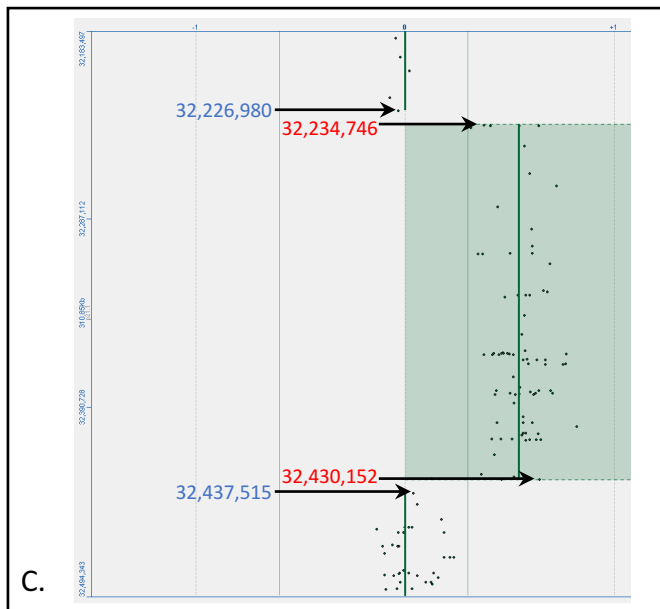
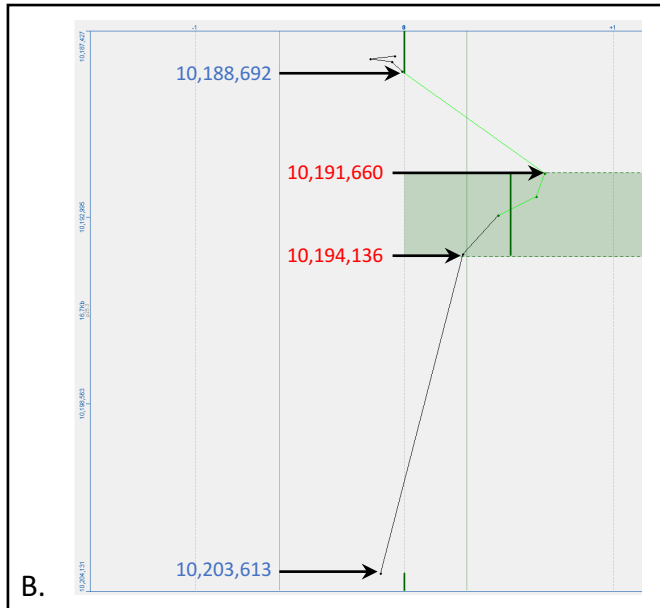
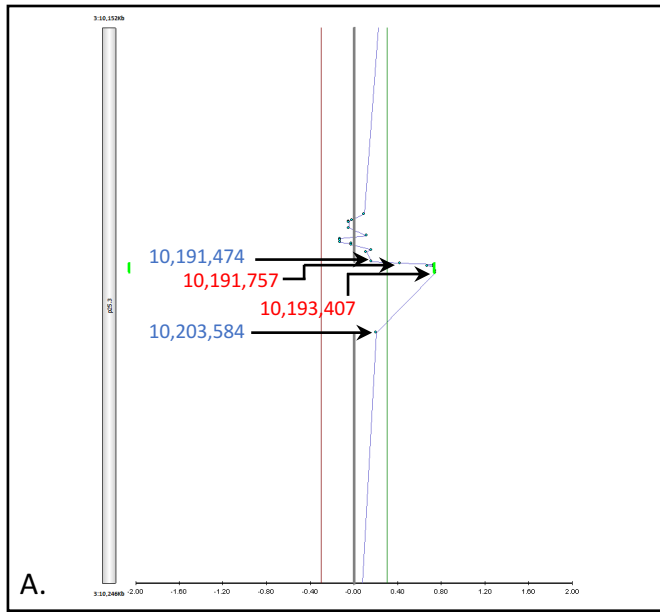


Supplementary Figure 1



Supplementary Figure 1: ArrayCGH data is shown for the *VHL* locus for the Case 1 patient (A) and his father (B) and for the *DMD* locus for Case 2 (C). Minimum duplicated regions (as determined by an autocaling algorithm for each array) are marked with a bright green vertical line and shaded green segments, respectively. The probe coordinates defining the minimum duplicated region are displayed in red, and probe coordinates for adjacent normal probes are in blue. Genomic coordinates refer to human reference sequence build hg19.