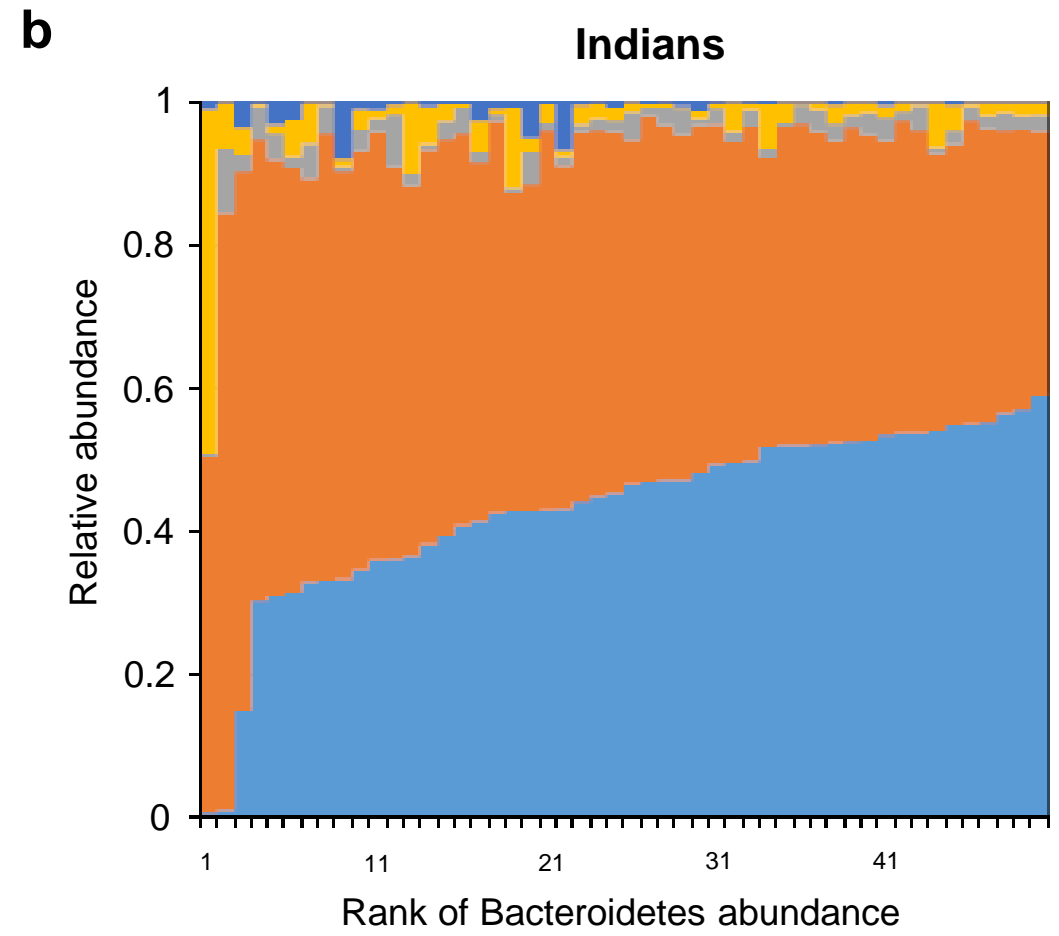
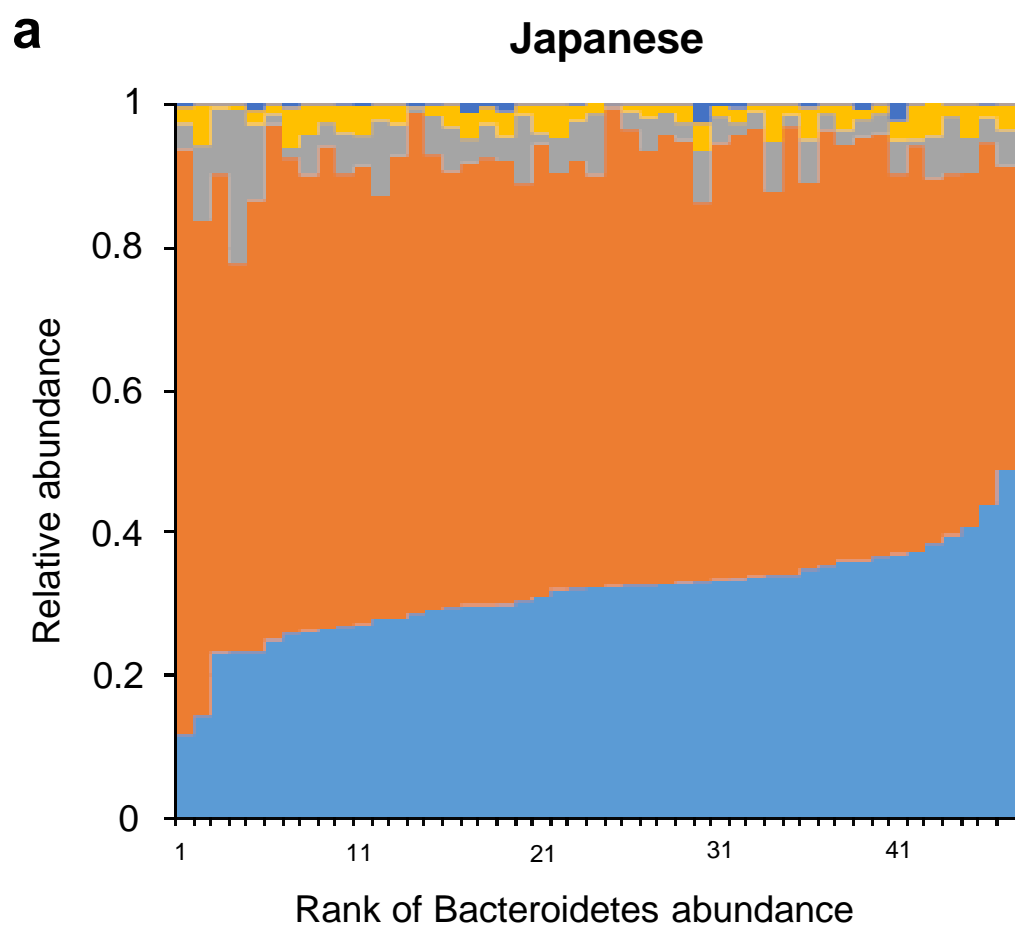


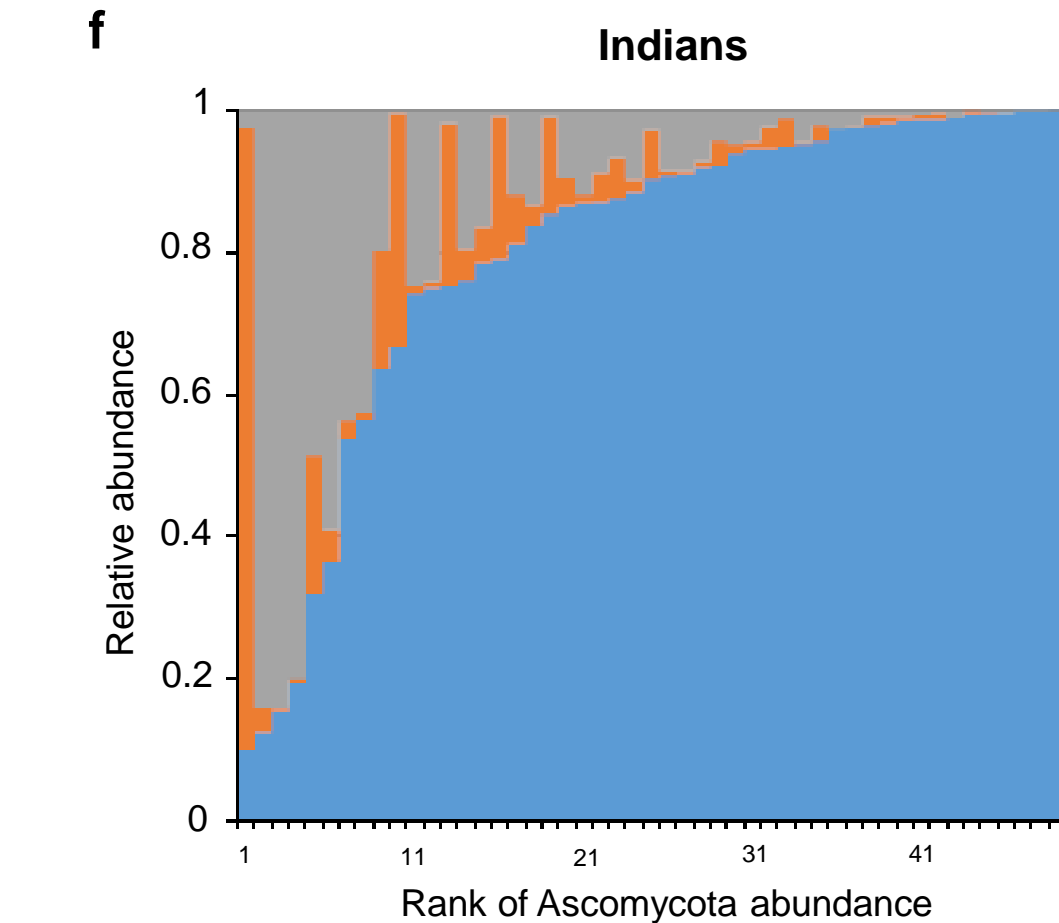
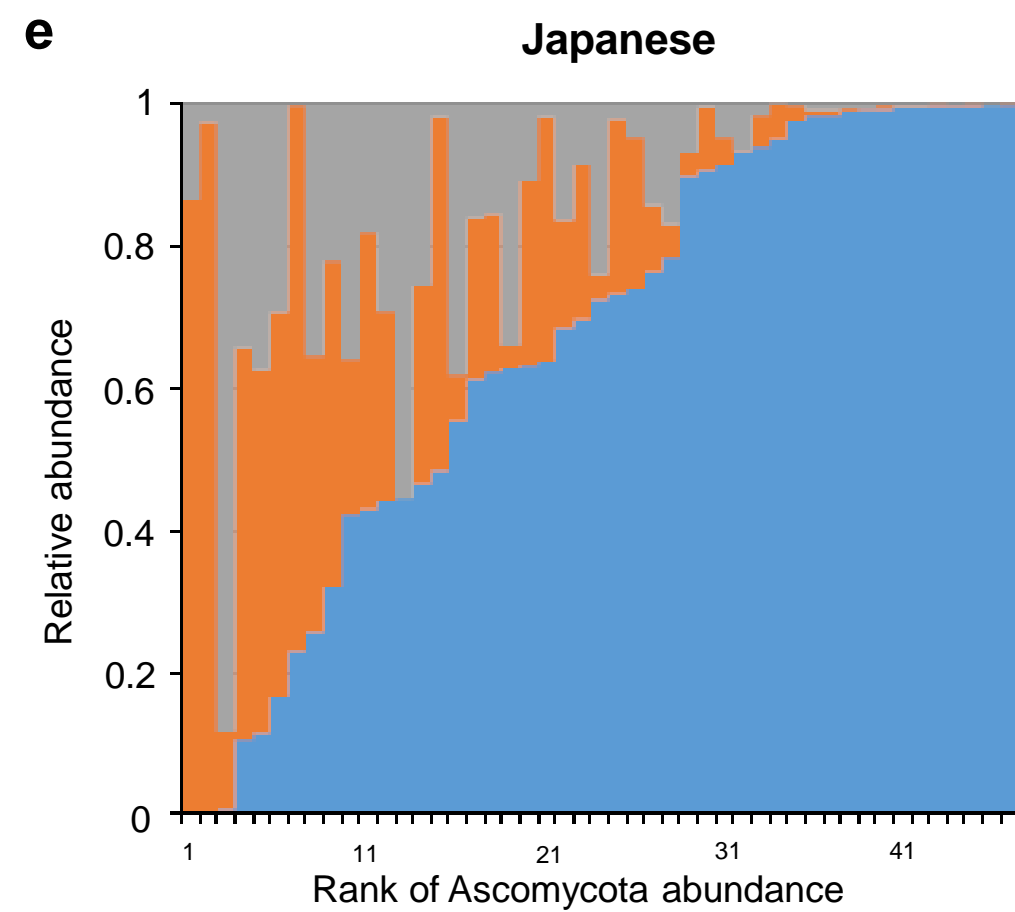
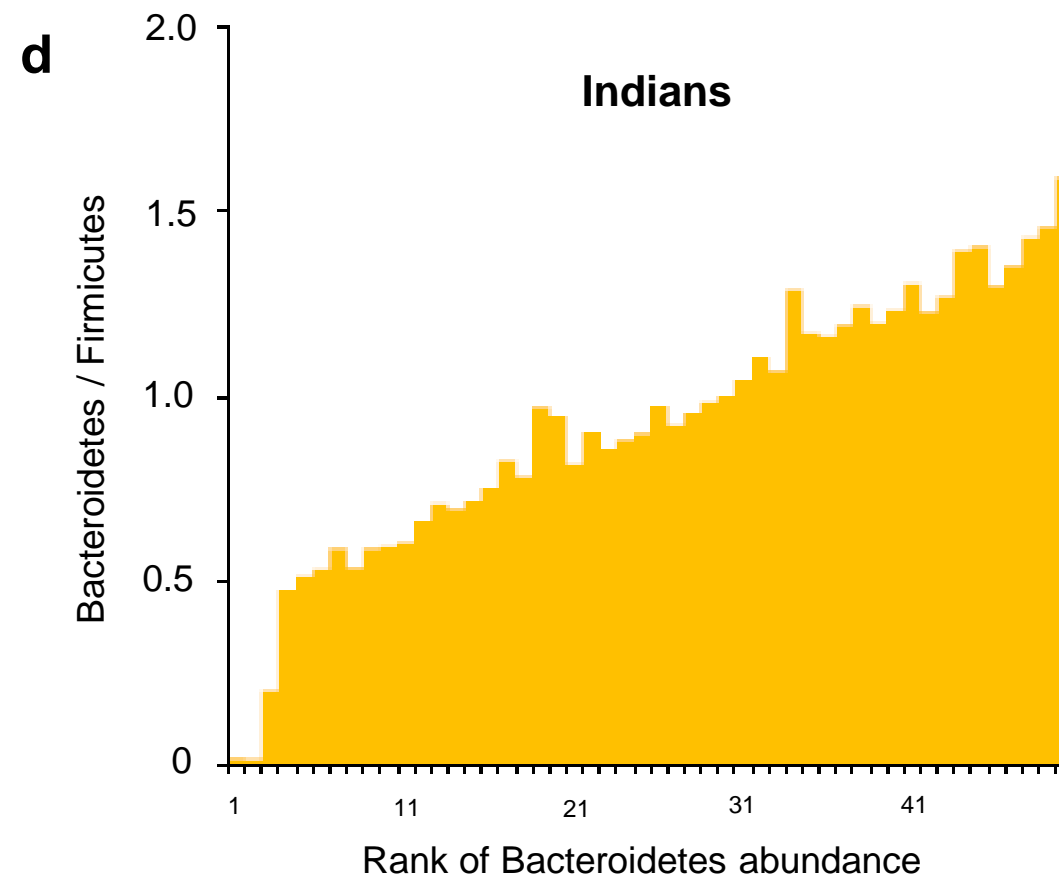
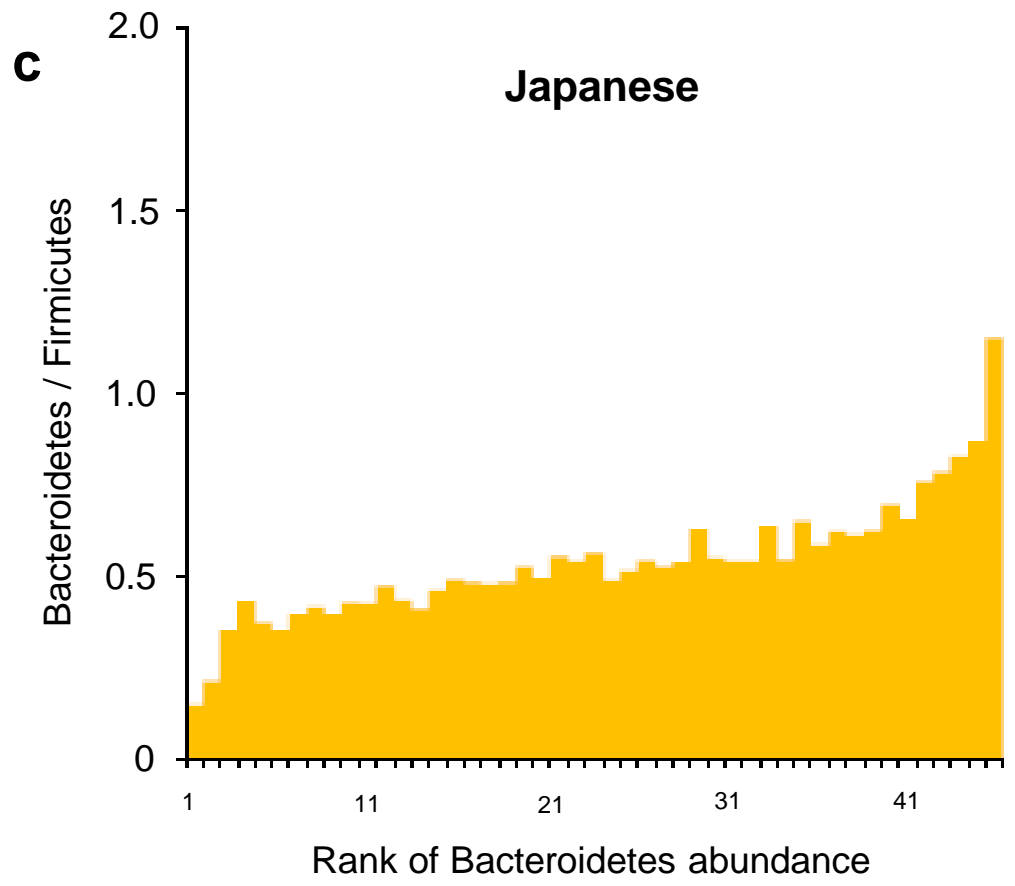
Supplementary Table1 Specificity check of *Candida* and *Prevotella copri* primers.

Microorganism	Strain No.	<i>Candida_albicans</i> _138Fw/234Rv	Ctro/UNI2	PCFw/PCRv
<i>Candida albicans</i>	IFM 40009	+	-	NT ¹⁾
<i>Candida dubliniensis</i>	IFM 48313	+	-	NT
<i>Candida tropicalis</i>	IFM 61949	-	+	NT
<i>Candida glabrata</i>	IFM 5768	-	-	NT
<i>Aspergillus fumigatus</i>	IFM 54229	-	-	NT
<i>Aspergillus flavus</i>	IFM 61916	-	-	NT
<i>Aspergillus niger</i>	IFM 62238	-	-	NT
<i>Aspergillus terreus</i>	IFM 61604	-	-	NT
<i>Acremonium alternatum</i>	IFM 61908	-	-	NT
<i>Cladosporium cladosporioides</i>	IFM 62110	-	-	NT
<i>Cladosporium herbarum</i>	IFM 57770	-	-	NT
<i>Cryptococcus neoformans</i>	IFM 46660	-	-	NT
<i>Cryptococcus aureus</i>	IFM 50258	-	-	NT
<i>Fusarium oxysporum</i>	IFM 62224	-	-	NT
<i>Fusarium solani</i>	IFM 62065	-	-	NT
<i>Penicillium oxalicum</i>	IFM 49446	-	-	NT
<i>Penicillium digitatum</i>	IFM 60598	-	-	NT
<i>Penicillium chrysogenum</i>	IFM 61632	-	-	NT
<i>Penicillium citrinum</i>	IFM 62178	-	-	NT
<i>Trichoderma viride</i>	IFM 51186	-	-	NT
<i>Trichoderma koningii</i>	IFM 51050	-	-	NT
<i>Mucor ramosissimus</i>	IFM 47659	-	-	NT
<i>Rhizopus oryzae</i>	IFM 47055	-	-	NT
<i>Saccharomyces cerevisiae</i>	IFM 40022	-	-	NT
<i>Rhodotorula mucilaginosa</i>	IFM 40060	-	-	NT
<i>Rhodospiridium babjevae</i>	IFM 48570	-	-	NT
<i>Prevotella copri</i>	JCM 13464	NT	NT	+
<i>Prevotella copri</i>	Indian #31	NT	NT	+
<i>Prevotella copri</i>	Indian #38	NT	NT	+
<i>Prevotella copri</i>	Indian #7	NT	NT	-
<i>Prevotella copri</i>	Japanese F37	NT	NT	+
<i>Prevotella copri</i>	Japanese N001-8-1	NT	NT	-
<i>Prevotella copri</i>	Japanese N0165	NT	NT	-
<i>Prevotella corporis</i>	JCM 8529	NT	NT	-
<i>Aeromonas hydrophila</i>	NBRC 3820	NT	NT	-
<i>Bacteroides fragilis</i>	JCM 11019	NT	NT	-
<i>Bacteroides sartorii</i>	JCM 17136	NT	NT	-
<i>Bacteroides vulgatus</i>	JCM 5826	NT	NT	-
<i>Bifidobacterium longum</i>	JCM 1217	NT	NT	-
<i>Blautia producta</i>	JCM 1471	NT	NT	-
<i>Citrobacter koseri</i>	JCM 1658	NT	NT	-
<i>Collinsella intestinalis</i>	JCM 10643	NT	NT	-
<i>Escherichia coli</i>	JCM 1649	NT	NT	-
<i>Eubacterium dolichum</i>	JCM 10413	NT	NT	-
<i>Fusobacterium varium</i>	JCM 6320	NT	NT	-
<i>Lactobacillus acidophilus</i>	JCM 1132	NT	NT	-
<i>Lactobacillus gasseri</i>	JCM 1131	NT	NT	-

¹⁾ NT, Not tested.

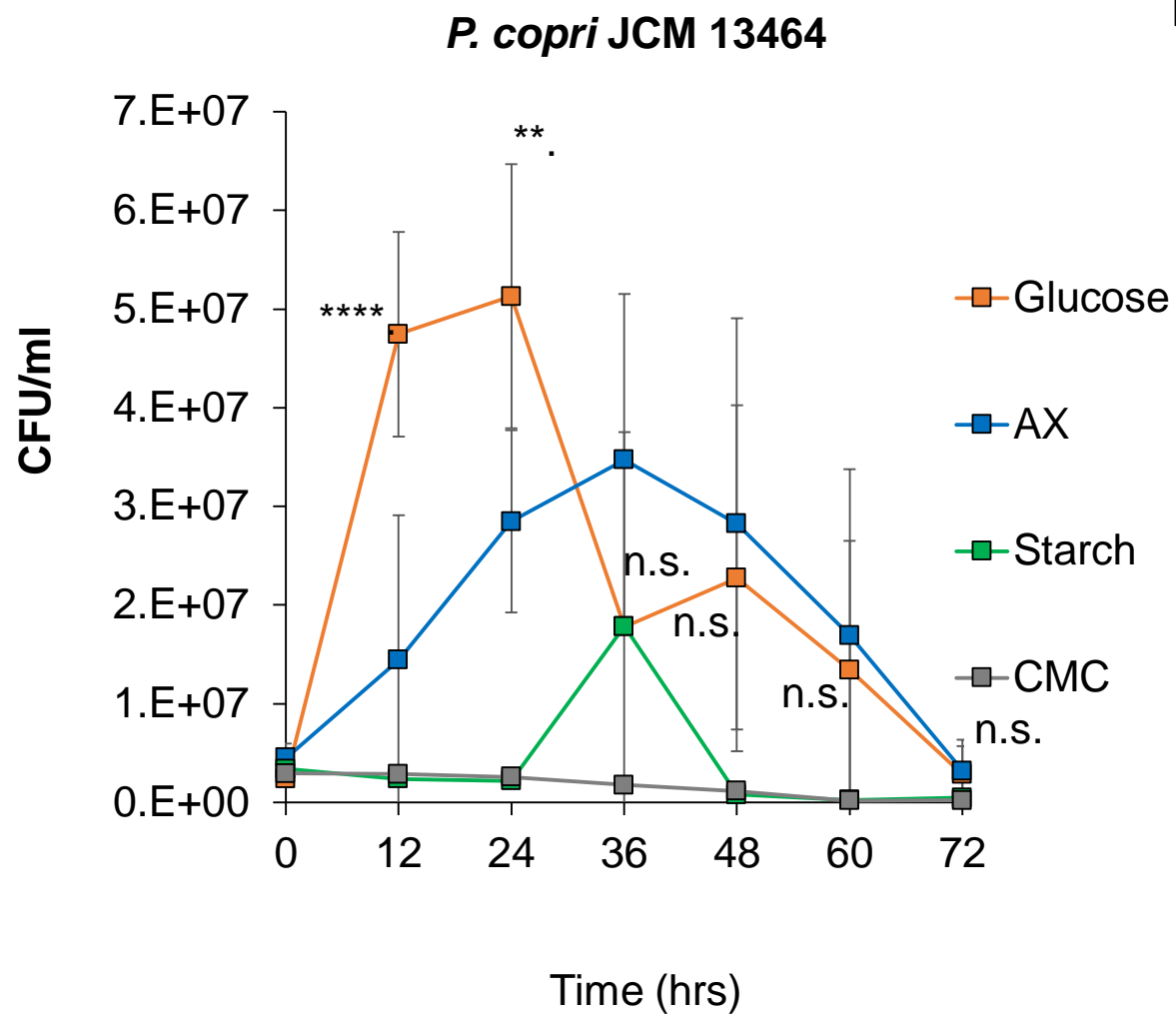


■ Bacteroidetes ■ Firmicutes ■ Actinobacteria ■ Proteobacteria ■ Others

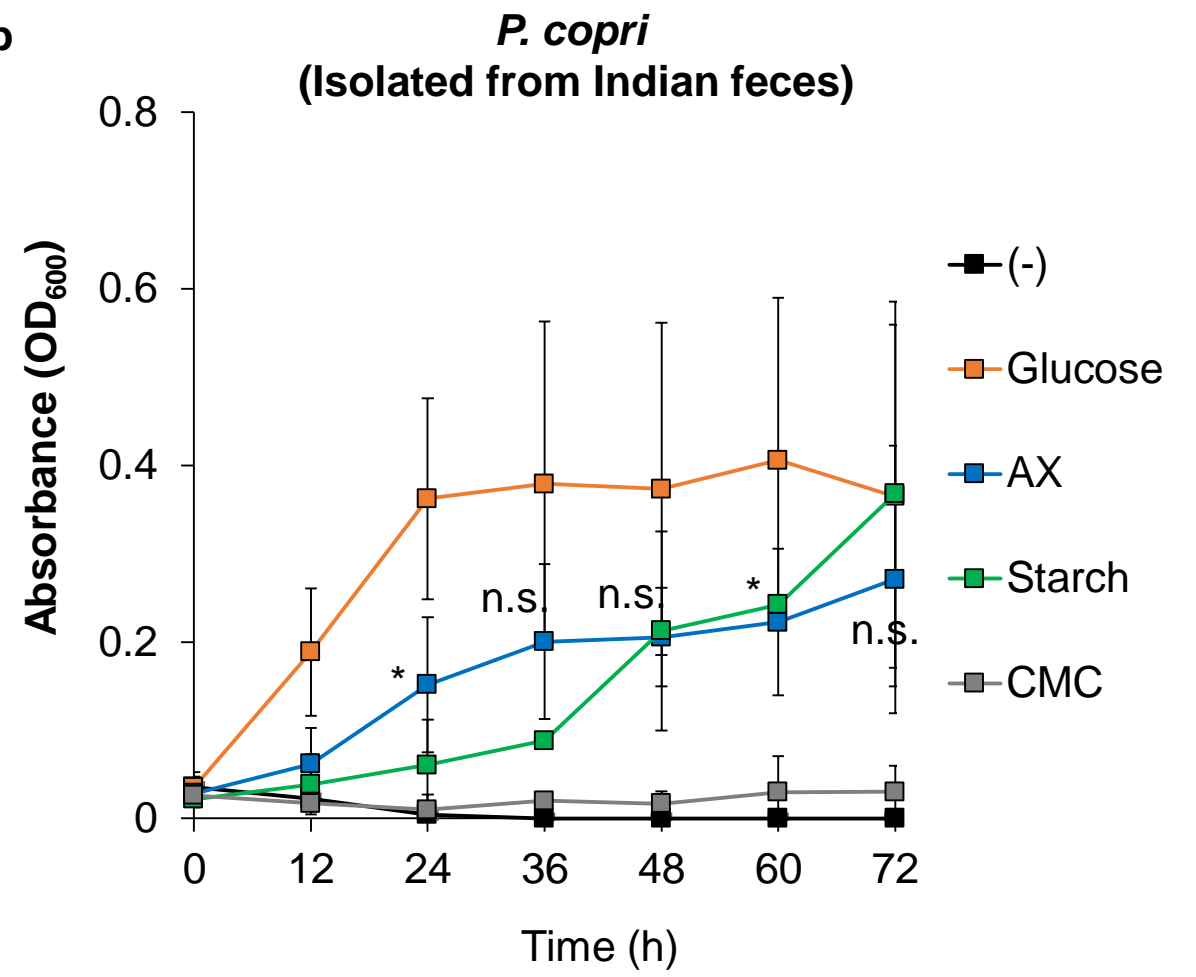


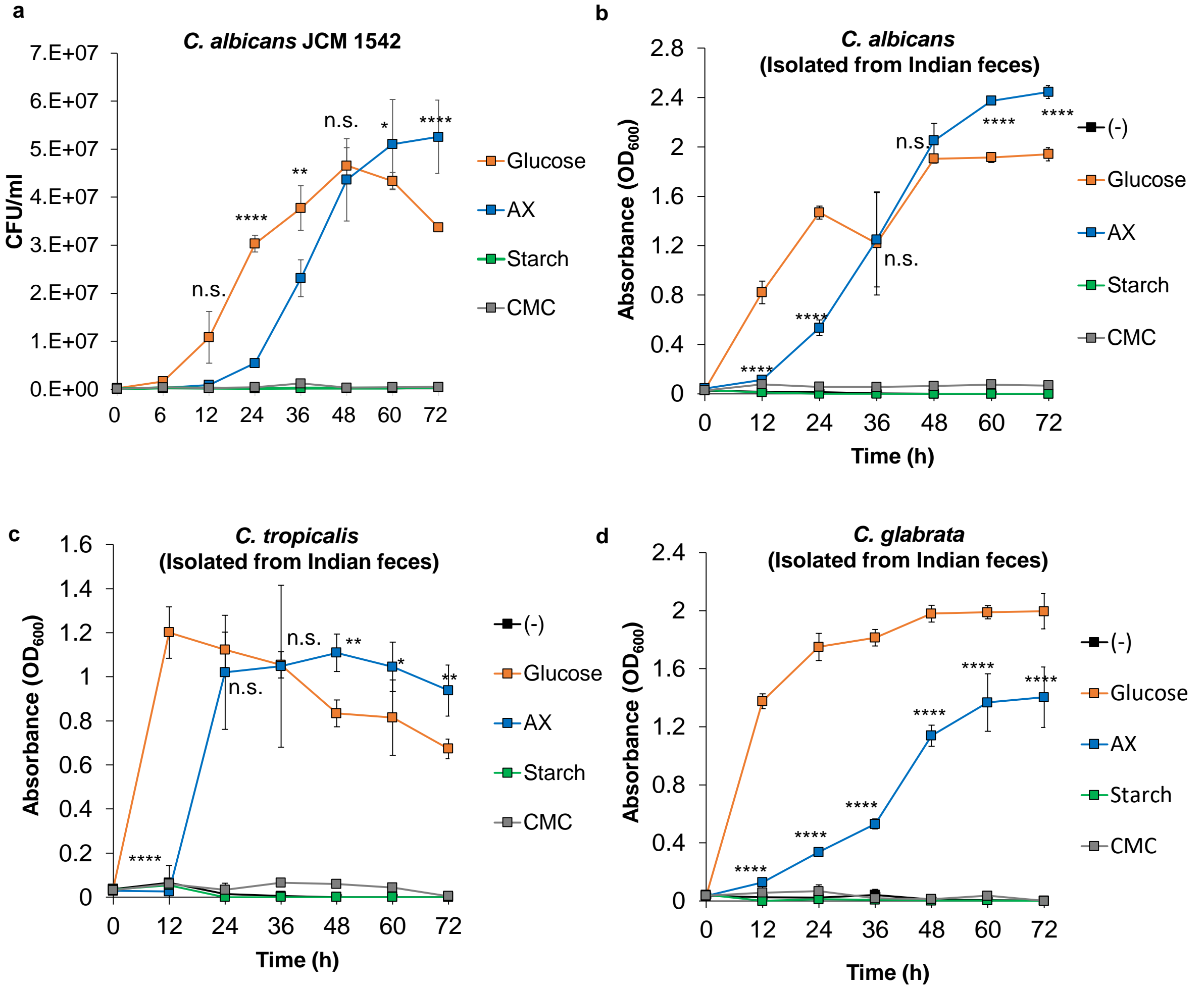
■ Ascomycota ■ Basidiomycota ■ Others

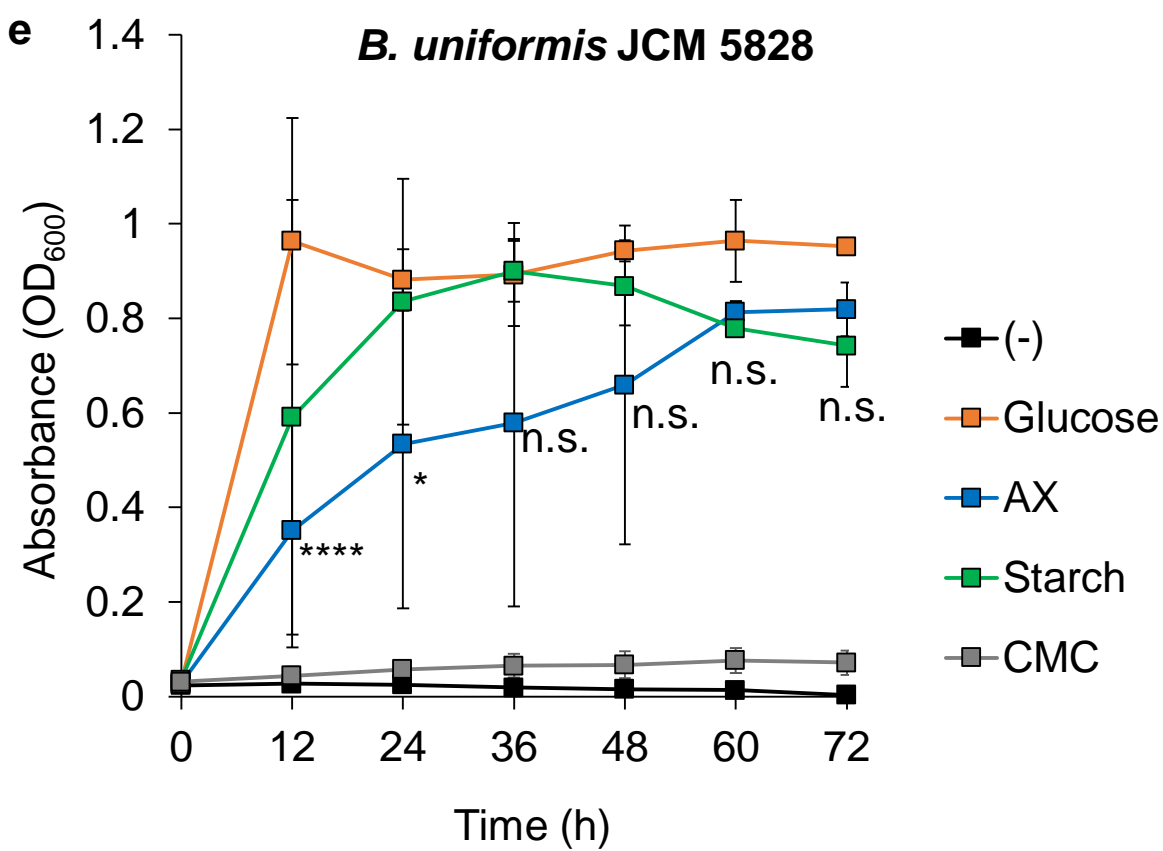
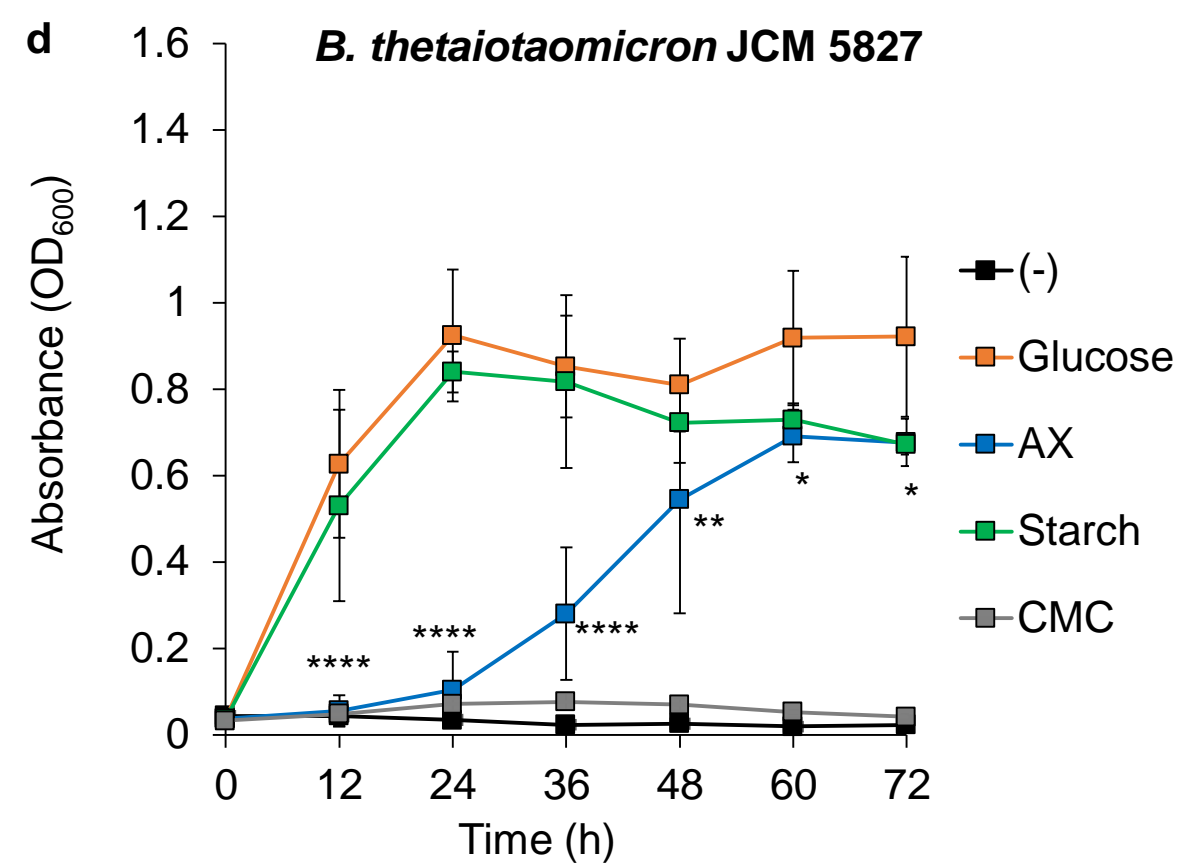
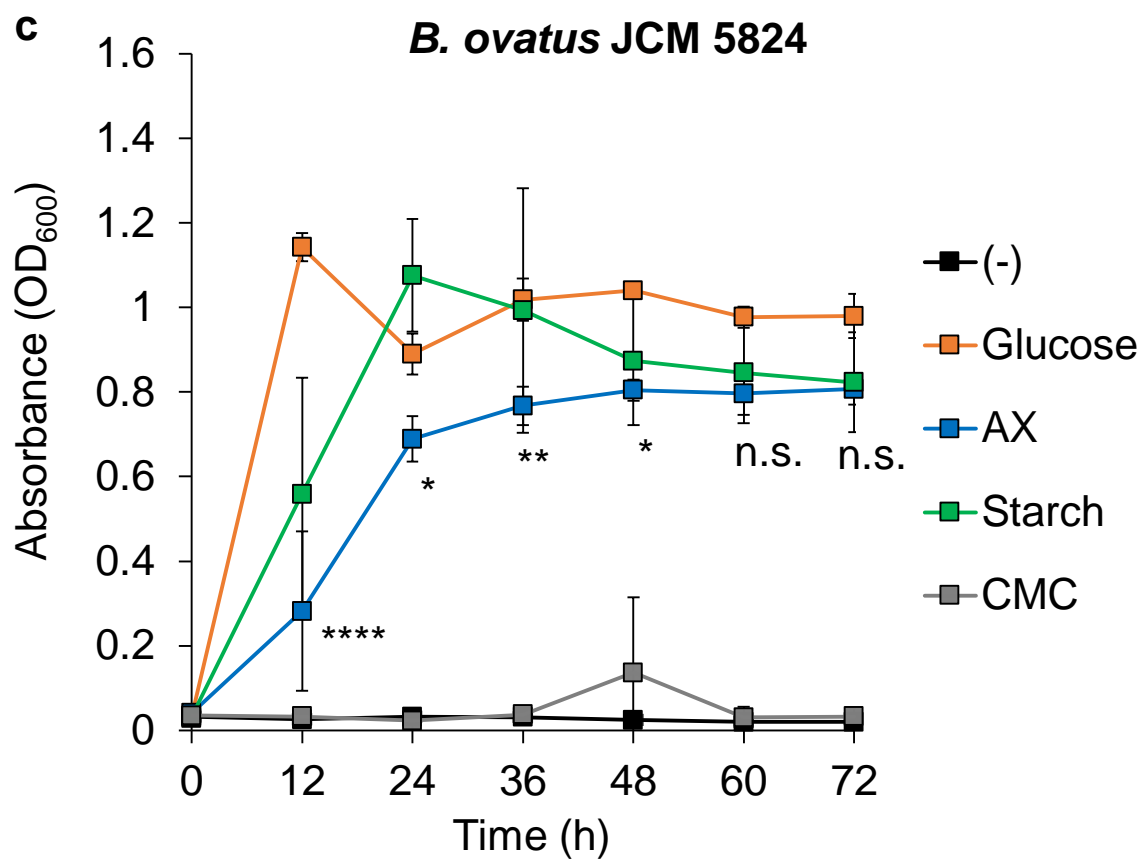
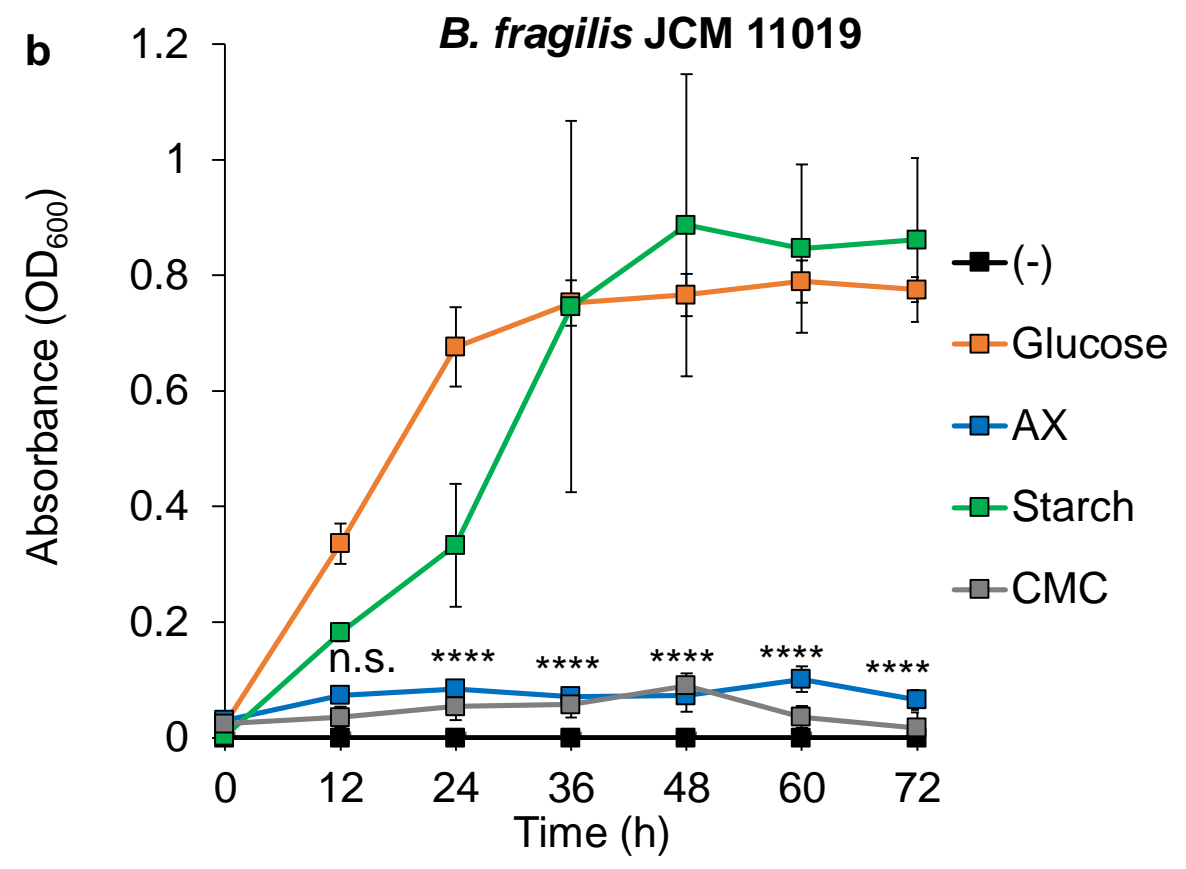
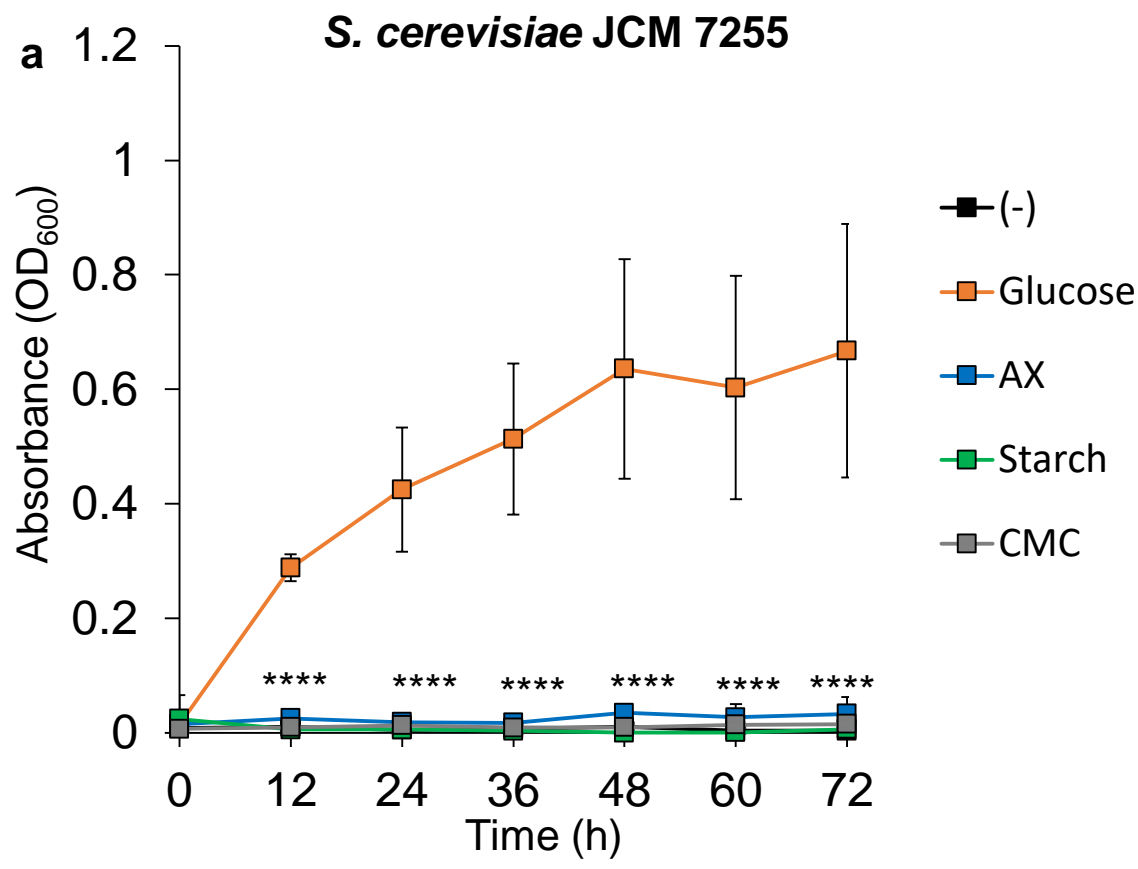
a



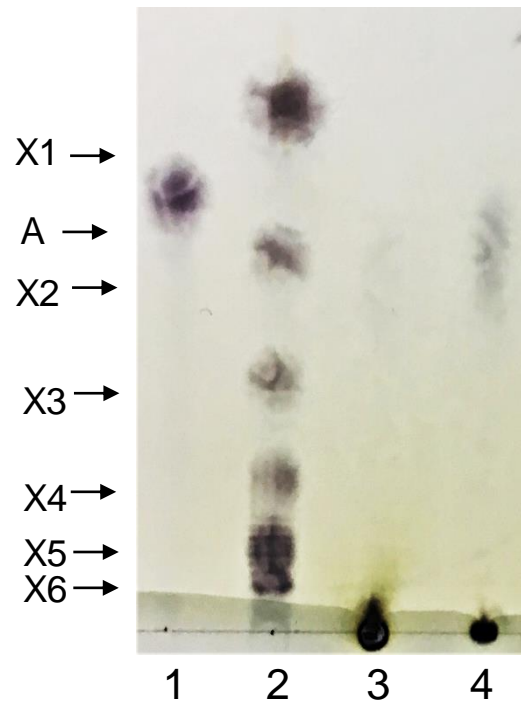
b



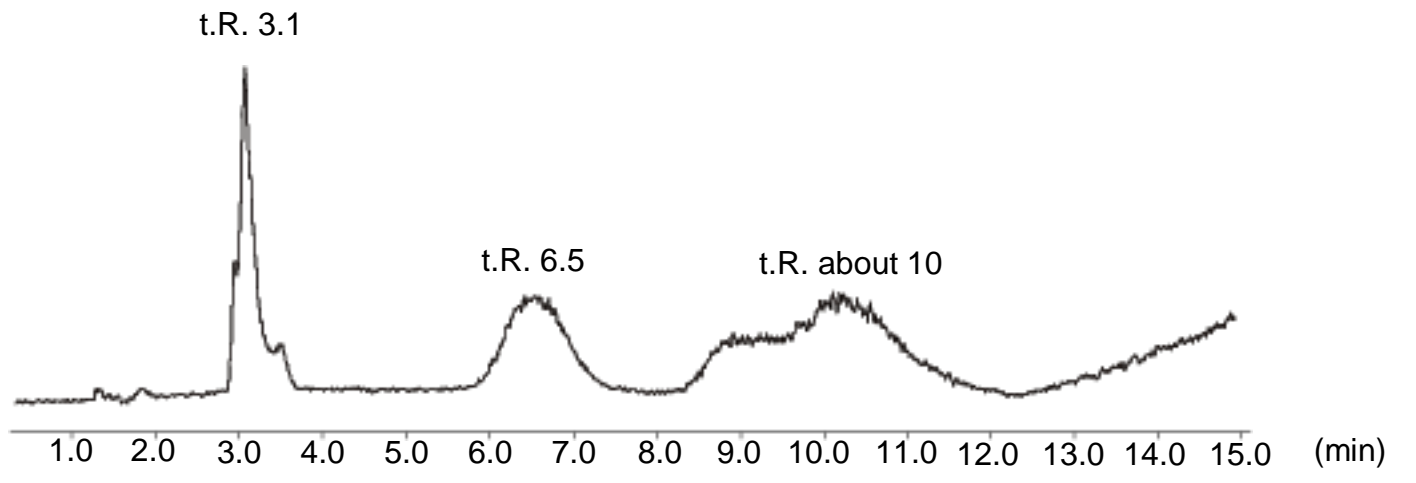




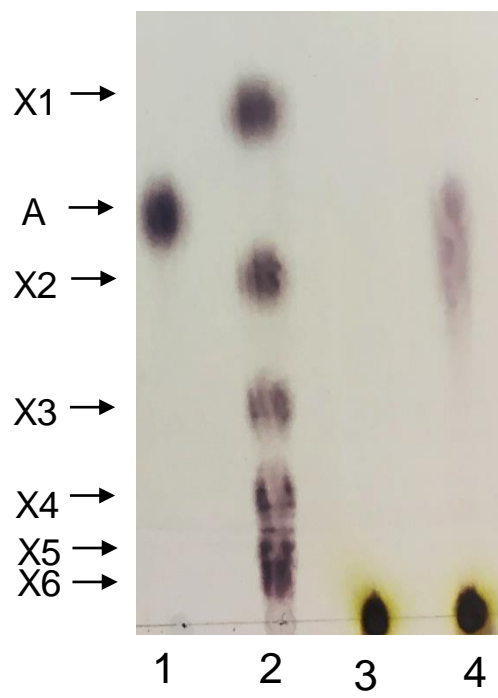
a *C. albicans*
(Isolated from Indian feces)



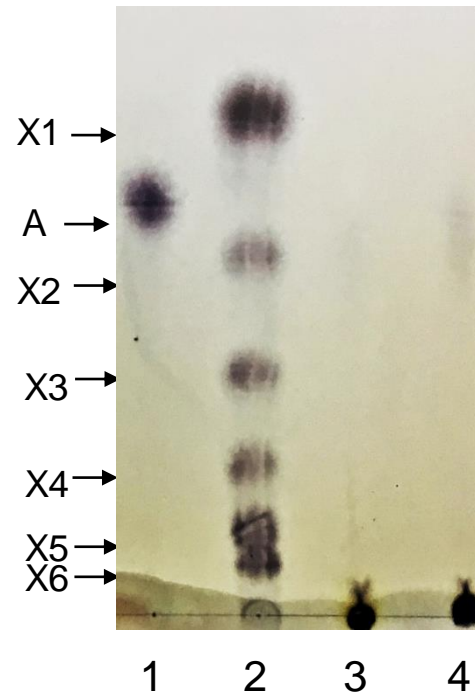
b *C. tropicalis* JCM 1541

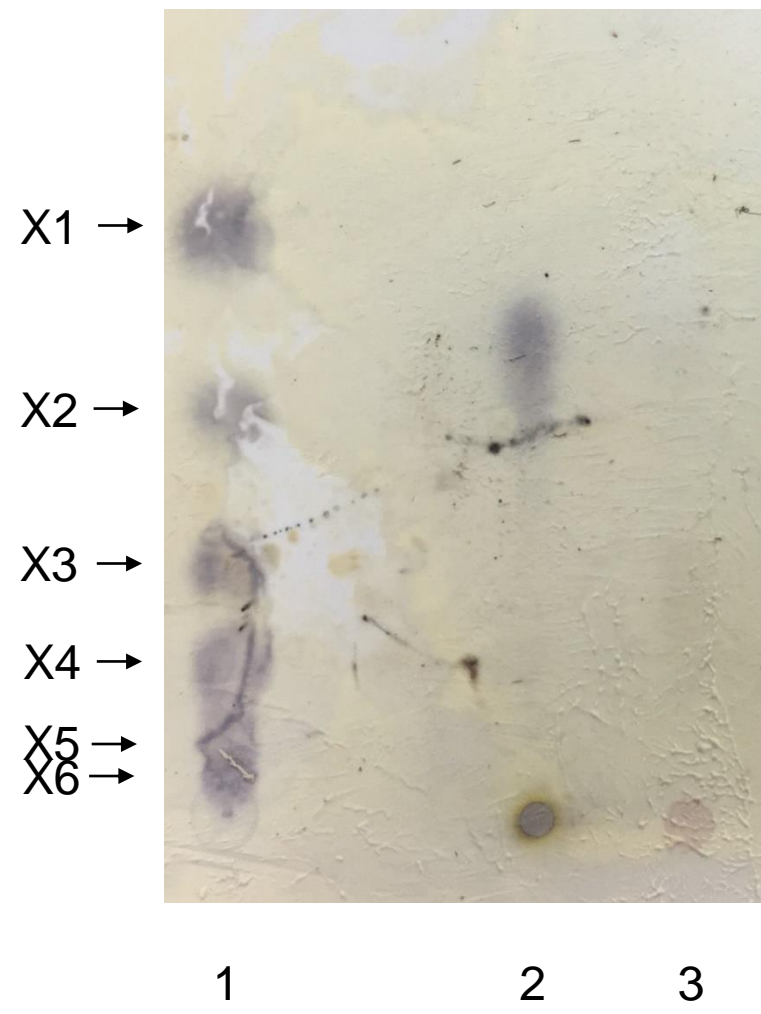


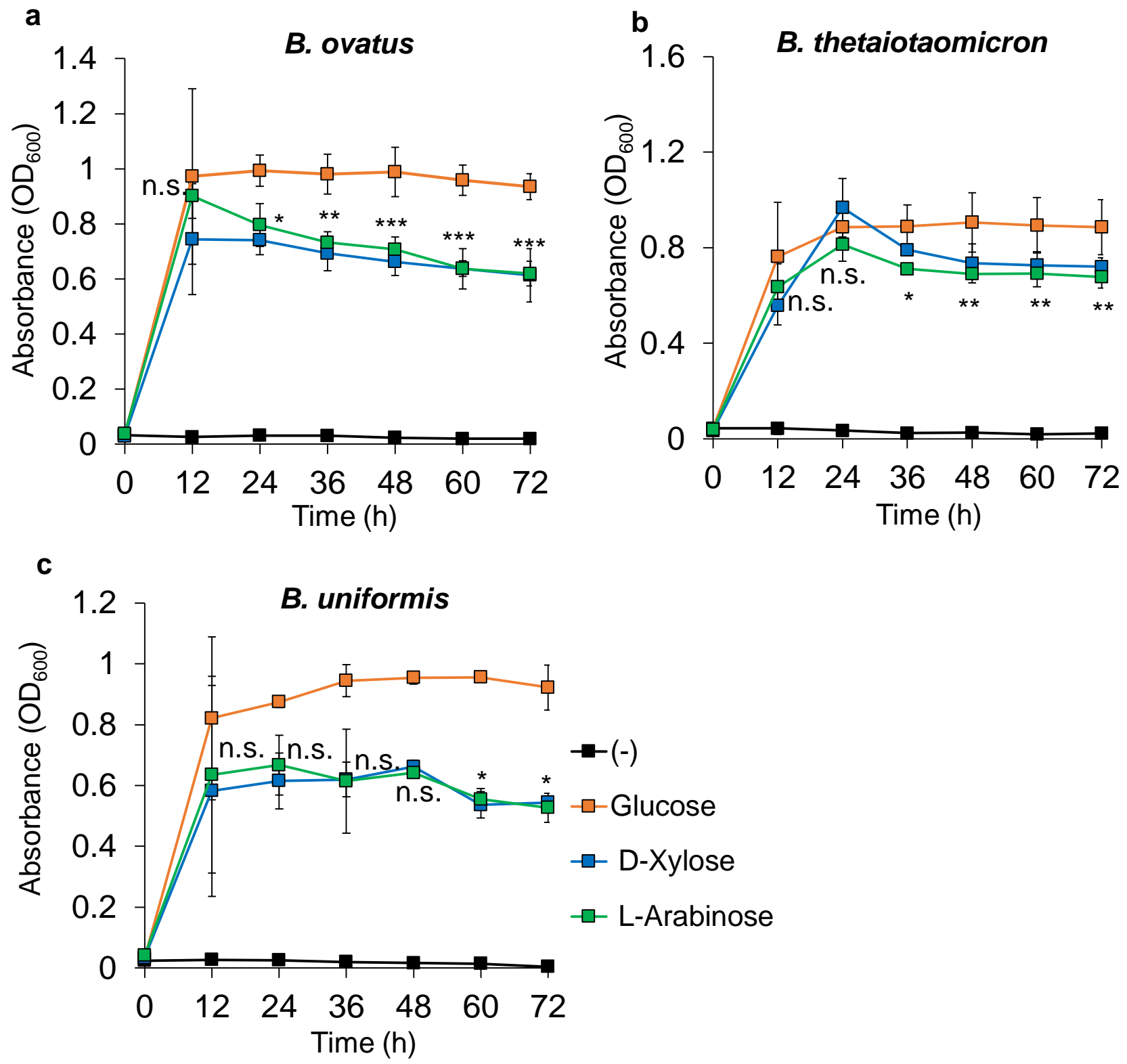
c *C. tropicalis* JCM 1541

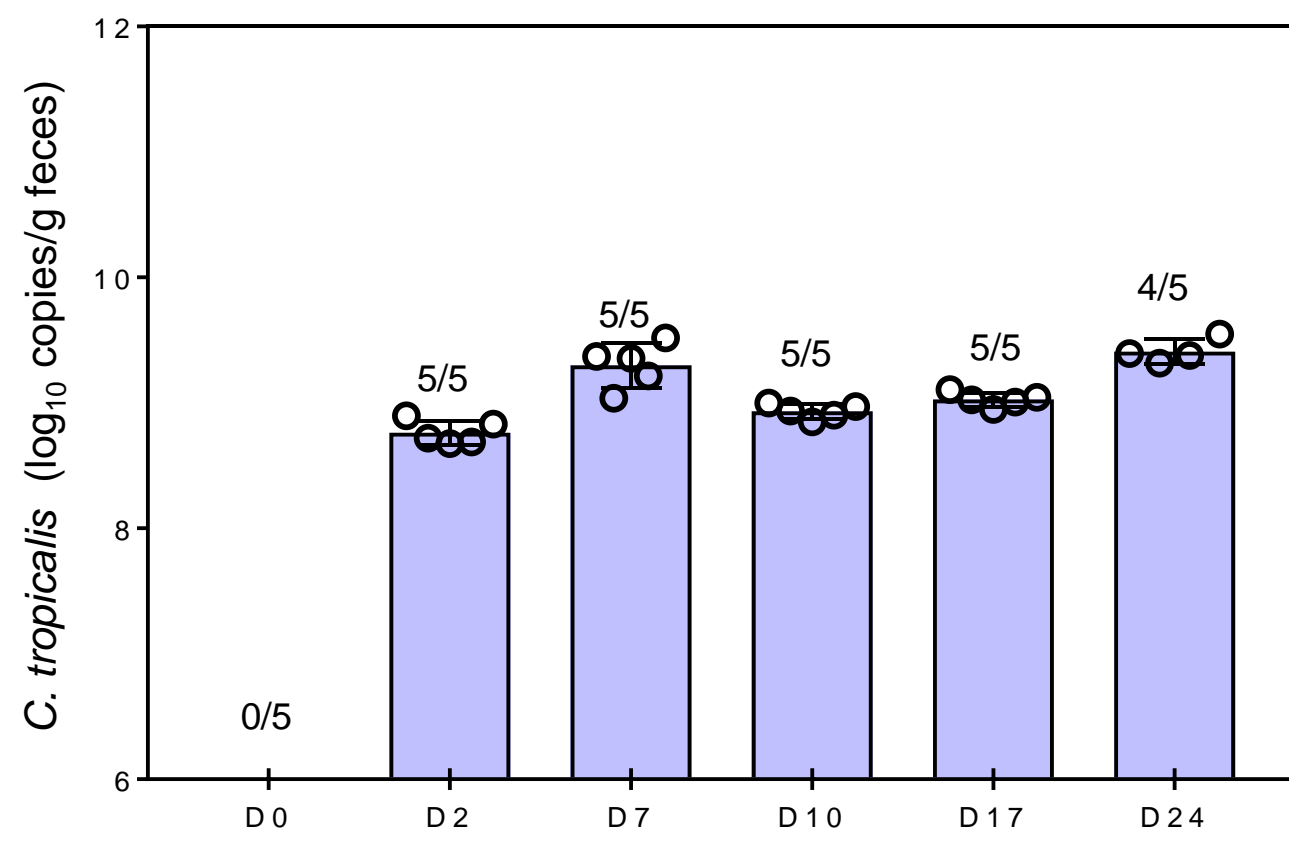


d *C. tropicalis*
(Isolated from Indian feces)

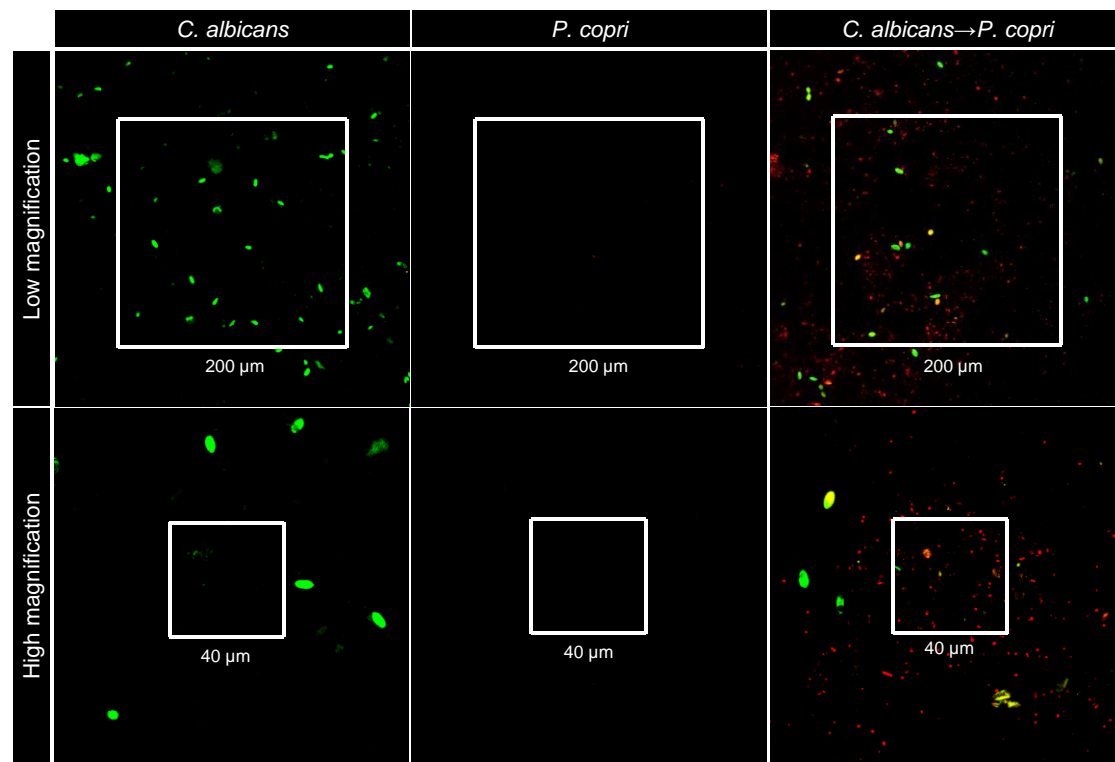




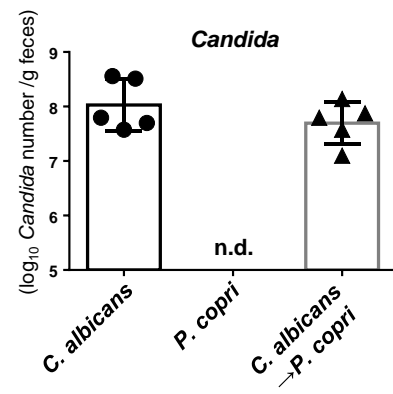




a



b



c

