

Appendix
Impacts of Medicaid Expansion on Health Among Women of Reproductive Age
Margerison et al.

Appendix Table 1. Number and Percent Uninsured/Insured by Maternal Characteristics Among Low-income Women Aged 18–44 Years in the Behavioral Risk Factor Surveillance System (BRFSS), 2011–2012

Variable	Uninsured n (%)	Insured n (%)
Overall	12,325 (37.0)	20,971 (63.0)
Race		
Non-Hispanic white	5,617 (34.4)	10,723 (65.6)
Non-Hispanic black	2,067 (33.6)	4,086 (66.4)
Hispanic	3,784 (51.1)	3,625 (48.9)
Non-Hispanic other	787 (24.7)	2,399 (75.3)
Education		
Did not graduate high school	2,986 (47.7)	3,273 (52.3)
Graduated high school	4,533 (37.8)	7,452 (62.2)
Attended college	3,533 (32.2)	7,427 (67.8)
Graduated college	1,260 (31.1)	2,794 (68.9)
Marital status		
Married/Unmarried couple	5,166 (42.6)	6,957 (57.4)
Divorced, widowed, separated, never married	7,113 (33.8)	13,941 (66.2)
Dependent children in household?		
Yes	9,820 (36.9)	16,782 (63.1)

Appendix
Impacts of Medicaid Expansion on Health Among Women of Reproductive Age
Margerison et al.

Appendix Table 2. Percentage Reporting Outcomes Overall and by Insurance Status Among Low-income Aged Women 18–44 Years in the Behavioral Risk Factor Surveillance System (BRFSS), 2011–2012

Variable	Overall n (%) or mean (SE)	Uninsured n (%) or mean (SE)	Insured n (%) or mean (SE)	Difference between uninsured and insured
Access to health care				
Avoided seeking care due to cost	12,605 (37.9)	7,631 (62.1)	4,974 (23.8)	38.3
Preventive health care				
Check-up in last year	19,374 (59.0)	4,845 (40.0)	14,529 (70.2)	–30.2
Ever had blood cholesterol checked	10,134 (60.5)	3,156 (50.6)	6,978 (66.3)	–15.7
Last cholesterol check in last year	6,381 (64.0)	1,491 (48.0)	4,890 (71.3)	–23.3
Overall health				
Self-rated health good/very good/excellent	25,240 (76.0)	9,273 (75.4)	15,967 (76.3)	–0.9
Experienced physical health distress in past month	5,168 (15.8)	1,598 (13.2)	3,570 (17.3)	–4.1
Experienced mental health distress in past month	8,009 (24.4)	2,730 (22.5)	5,279 (25.5)	–3.0
Chronic disease				
Has been told they have/had high blood pressure	2,988 (17.1)	985 (15.2)	2,003 (18.3)	–3.1
Has been told they have/had high cholesterol	2,396 (23.8)	707 (22.5)	1,689 (24.3)	–1.8
Has been told they have/had diabetes	1,920 (5.8)	529 (4.3)	1,391 (6.6)	–2.3
Has been told they have/had prediabetes or borderline diabetes	822 (6.8)	259 (5.9)	563 (7.3)	–1.4
Currently taking blood pressure medication ^a	1,624 (54.4)	412 (41.9)	1,212 (60.6)	–18.7
Currently takes insulin ^a	272 (35.5)	61 (27.4)	211 (38.9)	–11.5
Health behaviors				
Smoking cessation attempt in last year ^a	6,887 (64.3)	2,499 (63.2)	4,388 (65.0)	–1.8
Underweight or normal weight vs overweight or obese	11,469 (36.8)	4,187 (37.3)	7,282 (36.6)	0.7
Binge drinking	4,624 (14.8)	1,619 (14.0)	3,005 (15.3)	–1.3
Heavy drinking	1,452 (4.7)	550 (4.8)	902 (4.6)	0.2

^aThis item was asked to only a subset of the sample based on responses to prior survey items (Appendix Tables 4 and 5).

Appendix
Impacts of Medicaid Expansion on Health Among Women of Reproductive Age
Margerison et al.

Appendix Table 3. Medicaid Expansion Status of States and Treatment (Expansion/Control/Excluded) in Each Sample

Medicaid expansion status	States in group	Treatment in main sample (Table 2)	Treatment in most generous definition (Appendix Table 8)	Treatment in most restrictive definition (Appendix Table 8)	Treatment in exclusion of late expanders (Appendix Table 8)
Expanded					
1. Expanded January 1, 2014; no or limited prior expansion	Arkansas, Colorado, Illinois, Kentucky, Maryland, New Jersey, Nevada, New Mexico, North Dakota, Ohio, Oregon, Rhode Island, West Virginia	Expansion	Expansion	Expansion	Expansion
2. Expanded January 1, 2014; partial prior expansion	Arizona, California, Connecticut, Hawaii, Iowa, Minnesota, Washington	Excluded	Expansion	Excluded	Excluded
3. Expanded in 2014 (after January 1)	Michigan, New Hampshire	Excluded	Expansion	Excluded	Excluded
4. Expanded in 2015	Alaska, Indiana, Pennsylvania	Excluded	Excluded	Excluded	Excluded
5. Expanded in 2016	Louisiana, Montana	Control	Control	Control	Excluded
Control					
6. Did not expand under ACA and had no or limited prior expansion	Alabama, Florida, Georgia, Idaho, Kansas, Mississippi, Missouri, Nebraska, North Carolina, Oklahoma, South Carolina, South Dakota, Tennessee, Texas, Utah, Virginia, Wyoming	Control	Control	Control	Control
7. Did not expand under ACA and	Maine, Wisconsin	Control	Control	Excluded	Control

Appendix
Impacts of Medicaid Expansion on Health Among Women of Reproductive Age
Margerison et al.

had partial prior expansion						
8.	Full expansion prior to 2014	Delaware, Washington DC, Massachusetts, New York, Vermont	Control	Control	Excluded	Control

ACA, Affordable Care Act.

Appendix
Impacts of Medicaid Expansion on Health Among Women of Reproductive Age
Margerison et al.

Appendix Table 4. Original Behavioral Risk Factor Surveillance System (BRFSS) Questions for Variables

Variable name	Original question	Measurement
Insurance coverage		
Healthcare coverage	Do you have any kind of health care coverage, including health insurance, prepaid plans such as HMOs, or government plans such as Medicare, or Indian Health Service?	Yes/no
Access to health care		
Avoided seeking care due to cost	Was there a time in the past 12 months when you needed to see a doctor but could not because of cost?	Yes/no
Preventive health care		
Check-up in last year	About how long has it been since you last visited a doctor for a routine checkup?	Within past year yes/no
Ever had blood cholesterol checked	Have you EVER had your blood cholesterol checked?	Yes/no
Last cholesterol check within past year	About how long has it been since you last had your blood cholesterol checked?	Within past year yes/no
Overall health		
Self-rated health good/very good/excellent	Would you say in general your health is excellent/very good/good/fair/poor?	Excellent/very good/good vs fair/poor
Experienced physical health distress in past month	For how many days during the past 30 days was your physical health not good?	<14 days / ≥14 days
Experienced mental health distress in past month	For how many days during the past 30 days was your mental health not good?	<14 days / ≥14 days
Chronic disease		
Ever been told that blood pressure is high	Have you ever been told by a doctor, nurse or other health professional that you have high blood pressure?	Yes/no
Ever been told cholesterol is high	Have you ever been told by a doctor, nurse, or other health professional that your blood cholesterol is high?	Yes/no
Ever been told diabetic	Have you ever been told by a doctor, nurse, or other health professional that your blood cholesterol is high?	Yes/no
Ever been told pre-diabetic	Have you ever been told by a doctor, nurse, or other health professional that you have pre-diabetes or borderline diabetes?	Yes/no

Appendix
Impacts of Medicaid Expansion on Health Among Women of Reproductive Age
Margerison et al.

Currently taking blood pressure medication	Are you currently taking medicine for your high blood pressure?	Yes/no
Currently takes insulin	Are you now taking insulin?	Yes/no
Health behaviors		
Smoking cessation attempt in past 12 months	During the past 12 months, have you stopped smoking for one day or longer because you were trying to quit smoking?	Yes/no
Underweight or normal weight vs overweight or obese	Based on BMI calculated from self-reported weight and height	Underweight (<18.5 kg/m ²) Normal weight (18.5 to <25.0 kg/m ²) Overweight (25.0 to <30 kg/m ²) Obese (30 kg/m ² or above)
Binge drinking	≥5 drinks for males/ ≥4 drinks for females on one occasion in past 30 days	Yes/no
Heavy drinking	>14 drinks for males / >7 drinks for females per week in past 30 days	Yes/no

Appendix
Impacts of Medicaid Expansion on Health Among Women of Reproductive Age
Margerison et al.

Appendix Table 5. Number Available and Denominator for Each Outcome

Variable name	Denominator	Years asked	Number missing from denominator
Insurance			
Healthcare coverage	All	All	185
Access to care			
Avoided seeking care due to cost	All	All	130
Preventive health care			
Check-up in last year	All	All	943
Ever had blood cholesterol checked	All	2011, 2013, 2015	1,492
Last cholesterol check within past year	Among those who ever had a cholesterol check, n=20,901	2011, 2013, 2015	344
Overall health			
Self-rated health good/very good/excellent	All	All	154
Experienced physical health distress in past month	All	All	1,002
Experienced mental health distress in past month	All	All	782
Chronic disease			
Ever been told that blood pressure is high	All	2011, 2013, 2015	58
Ever been told cholesterol is high	Among those who ever had a cholesterol check, n=20,901	2011, 2013, 2015	95
Ever been told diabetic	All	All	114
Ever been told pre-diabetic	Among those without a diabetes diagnosis, n=54,875	All	31,847
Currently taking blood pressure medication	Among those with high blood pressure, n=6,316	2011, 2013, 2015	5
Currently takes insulin	Among those with a diabetes diagnosis, n=3,490	All	2,112
Health behaviors			
Smoking cessation attempt in past 12 months	Among those who have ever smoked at least 100 cigarettes and currently smoke at least some days, n=18,298	All	43

Appendix
Impacts of Medicaid Expansion on Health Among Women of Reproductive Age
Margerison et al.

Underweight or normal weight vs overweight or obese	All	All	4,001
Binge drinking	All	All	3,008
Heavy drinking	All	All	3,094

Appendix
Impacts of Medicaid Expansion on Health Among Women of Reproductive Age
Margerison et al.

Appendix Table 6. Interaction *P*-Value From Parallel Trends Tests. *P*-Values <0.05 Indicate Rejection of the Null Hypothesis That Trends in the Outcome Were Parallel for Expansion and Control States Prior to the Medicaid Expansion

Outcome	Unadjusted^a	Adjusted^b
	Interaction p-value	
Insurance		
Has healthcare coverage	0.2024	0.1707
Access to health care		
Avoided seeking care due to cost	0.2212	0.1305
Preventive health care		
Check-up in last year	0.0236	0.0240
Ever had blood cholesterol checked	0.2531	0.4348
Last cholesterol check within past year ^c	0.0000	0.0002
Overall health		
Had good or better health	0.0083	0.0097
Experienced physical health distress in past month	0.0434	0.0422
Experienced mental health distress in past month	0.4659	0.3621
Chronic disease		
Ever been told that blood pressure is high	0.5231	0.8714
Ever been told cholesterol is high	0.6949	0.6729
Ever been told diabetic	0.3471	0.4403
Ever been told pre-diabetic	0.7927	0.6481
Currently taking blood pressure medication	0.5204	0.4731
Currently takes insulin ^c	0.2159	0.0849
Health behaviors		
Has stopped smoking for one day or longer because they were trying to quit smoking in past 12 months ^c	0.9760	0.9571
Underweight or normal weight vs overweight or obese	0.0919	0.0191
Binge drinkers	0.6237	0.3133
Heavy drinkers	0.9389	0.7950

^aTo test the parallel trends assumption, we fit a series of regression models as follows, using only data from the pre-expansion period:

$$Y_{ist} = \beta_0 + \beta_{1t}(expansion \times year_t) + Year'_t\beta_2 + State'_s\beta_3 + \varepsilon_{ist}$$

Appendix
Impacts of Medicaid Expansion on Health Among Women of Reproductive Age
Margerison et al.

Y_{ist} represents the health outcome of interest for woman i in state s and year t . $Expansion$ is a 0/1 indicator of whether the woman lives in an expansion or control state, and $Year_t$ is a vector of year fixed effects. The null is the joint hypothesis that coefficients on all pre-expansion year interactions between expansion and year dummy variables are zero.

^bFor adjusted parallel trends analysis, we use the following model:

$$Y_{ist} = \beta_0 + \beta_1(Expansion_s \times Post) + Year'_t \beta_2 + State'_s \beta_3 + X'_{ist} \beta_4 + \beta_5 Z_{st} + \varepsilon_{ist}$$

where Y_{ist} represents the health outcome of interest for woman i in state s and year t . $Expansion$ is a 0/1 indicator of whether the woman lives in an expansion or control state; $post$, a 0/1 indicator for whether the outcome is measured pre- or post-expansion; $Year_t$ and $State_s$ are vectors of year and state fixed effects; X_{ist} is a vector of individual covariates (age group, race/ethnicity, household income, educational attainment, employment status, marital status, household size, and whether or not the woman has dependent children in the household); and Z_{st} is the quarterly average state unemployment rate. The null is the joint hypothesis that coefficients on all pre-expansion year interactions between expansion and year dummy variables are zero.

^cThis item was asked to only a subset of the sample (Appendix Tables 4 and 5).

Appendix
Impacts of Medicaid Expansion on Health Among Women of Reproductive Age
Margerison et al.

Appendix Table 7. Multivariate Adjusted^a Percentage Difference-in-Difference (DID) Estimates of Medicaid Expansion's Association With Outcomes Among All Women in 38 States and Washington DC (N=58,365) and Stratified by 5-Year Age Group

Outcome	18–24 years	25–29 years	30–44 years
	DID estimate (95% CI)	DID estimate (95% CI)	DID estimate (95% CI)
Health insurance			
Has healthcare coverage	8.7 (3.7, 13.7)	9.4 (1.8, 17.0)	9.1 (2.6, 15.6)
Access to health care			
Avoided seeking care due to cost	-6.4 (-12.3, -0.5)	-6.4 (-13.4, 0.6)	-8.1 (-12.6, -3.5)
Preventive health care			
Check-up in last year	4.1 (-0.2, 8.5)	6.8 (2.9, 10.8)	5.0 (0.9, 9.1)
Ever had blood cholesterol checked	7.0 (0.3, 13.6)	2.9 (-4.5, 10.3)	1.1 (-1.7, 4.0)
Last cholesterol check within a year	0.0 (-8.9, 8.8)	4.6 (-2.9, 12.1)	3.7 (-0.7, 8.1)
Overall health			
Self-rated health good/very good/excellent	0.8 (-2.2, 3.8)	1.8 (-1.4, 5.0)	2.8 (0.0, 5.6)
Experienced physical health distress in past month	-0.7 (-3.2, 1.8)	-2.0 (-4.8, 0.7)	-0.8 (-2.6, 1.1)
Experienced mental health distress in past month	-1.7 (-5.2, 1.7)	-0.2 (-4.5, 4.0)	-1.2 (-3.2, 0.9)
Chronic disease			
Told high blood pressure	2.6 (-0.5, 5.7)	0.5 (-4.3, 5.3)	-1.8 (-4.9, 1.3)
Told high cholesterol	-0.1 (-4.8, 4.5)	-0.5 (-5.1, 4.1)	-1.8 (-4.6, 1.1)
Told diabetes	0.4 (-0.5, 1.3)	-0.7 (-2.4, 0.9)	-0.5 (-1.5, 0.6)
Told prediabetes	0.6 (-1.3, 2.4)	1.1 (-2.5, 4.8)	-1.0 (-4.1, 2.0)
Currently taking blood pressure medication ^b	17.1 (-0.5, 34.7)	0.5 (-17.4, 18.5)	7.5 (2.0, 13.1)
Currently takes insulin ^b	-71.7 (-178.2, 34.7)	-22.6 (-86.1, 41.0)	12.8 (4.5, 21.1)
Health behaviors			
Smoking cessation attempt in last year ^b	0.8 (-12.7, 14.4)	-0.1 (-7.2, 6.9)	-0.1 (-3.8, 3.6)
Underweight/normal vs overweight/obese	0.7 (-4.1, 5.5)	-1.0 (-4.2, 2.2)	-0.2 (-2.7, 2.4)
Binge drinking	-1.2 (-4.6, 2.2)	0.2 (-3.2, 3.7)	-1.3 (-3.3, 0.7)
Heavy drinking	-2.2 (-4.2, -0.1)	1.5 (-0.6, 3.6)	-1.5 (-2.4, 0.6)

Note: Boldface indicates statistical significance ($p < 0.05$).

^aModels additionally adjusted for state, year, race, education, marital status, dependent children, age group, employment status, household size, income group, and state average unemployment rate.

^bThis item was asked to only a subset of the sample (Appendix Tables 4 and 5).

Appendix
Impacts of Medicaid Expansion on Health Among Women of Reproductive Age
Margerison et al.

Appendix Table 8. Multivariate Adjusted^a Estimates for Associations Between Simulated Probability of Eligibility for Medicaid and Outcomes in All States (n=282,869)

Outcome	All women	Married	Not married	Dependent children	No dependent children
	DID estimate (95% CI)	DID estimate (95% CI)	DID estimate (95% CI)	DID estimate (95% CI)	DID estimate (95% CI)
Health insurance					
Has healthcare coverage	12.6 (6.7, 18.5)	21.1 (11.1, 31.1)	10.8 (5.5, 16.1)	14.4 (6.4, 22.3)	10.5 (5.7, 15.3)
Access to health care					
Avoided seeking care due to cost	-7.8 (-13.0, -2.5)	-10.9 (-18.8, -2.9)	-7.1 (-12.1, -2.1)	-9.3 (-16.6, -2.1)	-6.4 (-10.3, -2.5)
Preventive health care					
Check-up in last year	5.4 (0.4, 10.4)	12.1 (3.5, 20.7)	4.0 (-0.7, 8.6)	6.6 (0.7, 12.5)	4.4 (-1.2, 10.0)
Ever had blood cholesterol checked	-1.6 (-5.7, 2.5)	-5.2 (-14.1, 3.7)	-0.8 (-5.9, 4.2)	-1.4 (-7.6, 4.8)	-1.8 (-7.9, 4.3)
Last cholesterol check within a year	5.4 (-0.8, 11.7)	14.2 (-0.2, 28.6)	3.3 (-3.9, 10.6)	5.8 (-1.8, 13.4)	6.7 (-2.1, 15.5)
Overall health					
Self-rated health good/very good/excellent	1.9 (-0.2, 4.0)	2.0 (-2.4, 6.4)	1.9 (-0.3, 4.0)	2.9 (-0.6, 6.3)	0.3 (-2.1, 2.8)
Experienced physical health distress in past month	-0.1 (-1.9, 1.6)	1.0 (-2.7, 4.8)	-0.4 (-2.3, 1.6)	-1.9 (-4.1, 0.3)	2.2 (0.3, 4.1)
Experienced mental health distress in past month	-1.3 (-3.7, 1.0)	-0.1 (-5.2, 5.1)	-1.6 (-4.1, 0.9)	-0.9 (-4.4, 2.5)	-1.9 (-4.8, 1.0)
Chronic disease					
Told high blood pressure	1.1 (-1.9, 4.2)	5.7 (-1.5, 13.0)	0.2 (-2.7, 3.1)	-0.1 (-3.6, 3.3)	2.7 (-1.7, 7.0)
Told high cholesterol	1.9 (-1.2, 5.0)	8.0 (-0.4, 16.4)	0.4 (-2.8, 3.7)	2.6 (-2.1, 7.4)	-0.2 (-4.7, 4.3)
Told diabetes	0.0 (-0.7, 0.7)	1.1 (-0.8, 3.0)	-0.2 (-1.0, 0.6)	-0.1 (-1.5, 1.2)	0.2 (-0.9, 1.4)
Told prediabetes	0.2 (-3.3, 3.7)	-1.2 (-7.3, 4.9)	0.5 (-3.2, 4.3)	0.4 (-3.5, 4.2)	-0.1 (-4.8, 4.7)
Currently taking blood pressure medication ^b	1.7 (-9.6, 13.0)	2.4 (-27.4, 32.3)	1.5 (-13.5, 16.5)	-6.3 (-19.6, 7.0)	12.7 (-9.2, 34.7)
Currently takes insulin ^b	1.2 (-33.9, 36.4)	-0.1 (-80.6, 80.4)	1.7 (-37.9, 41.2)	11.0 (-35.4, 57.4)	-2.5 (-83.6, 78.5)
Health behaviors					
Smoking cessation attempt in last year ^b	2.7 (-2.3, 7.8)	13.9 (1.5, 26.3)	0.5 (-4.7, 5.6)	4.8 (-4.5, 14.0)	-7.3 (-17.0, 2.4)
Underweight/normal vs overweight/obese	-0.0 (-2.7, 2.7)	-0.9 (-8.2, 6.5)	0.2 (-2.6, 2.9)	-0.0 (-3.8, 3.8)	0.2 (-4.6, 5.0)
Binge drinking	-1.3 (-4.0, 1.3)	4.5 (-0.4, 9.4)	-2.6 (-5.6, 0.4)	0.4 (-2.8, 3.5)	-3.3 (-7.3, 0.7)
Heavy drinking	-1.1 (-2.7, 0.5)	0.6 (-2.2, 3.3)	-1.5 (-3.3, 0.3)	-0.7 (-2.7, 1.3)	-1.6 (-4.2, 1.1)

Note: Boldface indicates statistical significance ($p < 0.05$).

^aModels additionally adjusted for demographic subgroup-by-state and subgroup-by-year fixed effects.

^bThis item was asked to only a subset of the sample (Appendix Tables 4 and 5).

Appendix
Impacts of Medicaid Expansion on Health Among Women of Reproductive Age
Margerison et al.

Appendix Table 9. Comparison of Difference-in-Difference (DID) Estimates of Medicaid Expansion's Association With Outcomes Using Different Definitions of Expansion and Control States

Outcome	Current definition ^a (corresponds to results in Table 2)	Most generous definition ^b	Most restrictive definition ^c	Exclusion of late expanders ^d
	DID Estimate (95% CI)	DID Estimate (95% CI)	DID Estimate (95% CI)	DID Estimate (95% CI)
Health insurance				
Has healthcare coverage	9.0 (2.9, 15.2)	5.1 (0.5, 9.8)	7.5 (1.4, 13.6)	9.2 (3.0, 15.5)
Access to health care				
Avoided seeking care due to cost	-7.4 (-12.2, -2.6)	-5.3 (-9.1, -1.6)	-5.9 (-10.6, -1.1)	-7.5 (-12.3, -2.6)
Preventive health care				
Check-up in last year	5.1 (1.8, 8.4)	2.4 (-1.1, 5.8)	4.3 (0.8, 7.7)	5.2 (1.9, 8.5)
Ever had blood cholesterol checked	2.2 (-0.7, 5.1)	1.4 (-0.9, 3.6)	2.4 (-0.7, 5.5)	2.6 (-0.3, 5.5)
Last cholesterol check within a year	3.6 (-0.1, 7.2)	0.7 (-3.0, 4.3)	2.8 (-1.0, 6.6)	3.4 (-0.3, 7.1)
Overall health				
Self-rated health good/very good/excellent	2.3 (0.3, 4.3)	2.1 (0.5, 3.6)	1.8 (-0.4, 3.9)	2.5 (0.5, 4.6)
Experienced physical health distress in past month	-1.0 (-2.6, 0.5)	-0.6 (-1.7, 0.6)	-0.8 (-2.4, 0.8)	-1.1 (-2.7, 0.5)
Experienced mental health distress in past month	-1.1 (-3.0, 0.7)	-1.3 (-2.8, 0.2)	-0.7 (-2.6, 1.2)	-1.2 (-3.0, 0.7)
Chronic disease				
Told high blood pressure	-0.6 (-3.2, 1.9)	0.1 (-1.6, 1.8)	-0.6 (-3.2, 2.0)	-0.7 (-3.3, 1.9)
Told high cholesterol	-1.6 (-3.6, 0.5)	1.2 (-1.1, 3.6)	-1.3 (-3.5, 0.9)	-1.6 (-3.7, 0.5)
Told diabetes	-0.4 (-1.1, 0.3)	-0.4 (-1.1, 0.3)	-0.3 (-1.0, 0.4)	-0.4 (-1.1, 0.4)
Told prediabetes	-0.3 (-2.7, 2.0)	-0.2 (-2.4, 1.9)	-0.4 (-2.9, 2.1)	-0.3 (-2.7, 2.2)
Currently taking blood pressure medication ^e	7.9 (3.1, 12.8)	5.5 (0.9, 10.0)	7.9 (2.7, 13.1)	7.9 (3.0, 12.9)
Currently takes insulin ^e	11.4 (3.0, 19.7)	8.7 (-1.9, 19.3)	9.9 (1.8, 18.1)	12.6 (3.8, 21.3)
Health behaviors				
Smoking cessation attempt in last year ^e	0.3 (-3.3, 3.9)	-0.7 (-3.5, 2.0)	-0.1 (-3.8, 3.6)	0.7 (-2.9, 4.3)
Underweight/normal BMI vs overweight/obese	-0.3 (-1.9, 1.4)	0.1 (-1.1, 1.2)	-0.3 (-1.9, 1.3)	-0.3 (-2.0, 1.4)
Binge drinking	-0.8 (-2.3, 0.6)	-0.3 (-1.6, 1.0)	-0.7 (-2.3, 0.8)	-0.9 (-2.4, 0.6)
Heavy drinking	-1.0 (-1.8, -0.2)	-0.4 (-1.2, 0.3)	-0.9 (-1.7, -0.2)	-1.0 (-1.8, -0.2)

Note: Boldface indicates statistical significance ($p < 0.05$).

^aModels additionally adjusted for state, year, race, education, marital status, dependent children, age group, employment status, household size, income group, and state average unemployment rate.

Appendix
Impacts of Medicaid Expansion on Health Among Women of Reproductive Age
Margerison et al.

Defines expansion states as those that expanded under the ACA on January 1, 2014 with no or limited prior expansion. Defines control states as those that did not expand under the ACA in 2014 or 2015 (with no or very limited prior expansions, or with partial prior expansions), or had full expansions prior to 2014.

^bDefines expansion states as those that expanded under the ACA on January 1, 2014 (with no or limited prior expansion, or with partial prior expansions), or expanded in 2014 but after January 1. Defines control states as those that did not expand under the ACA in 2014 or 2015 (with no or very limited prior expansions, or with partial prior expansions), or had full expansions prior to 2014.

^cDefines expansion states as those that expanded under the ACA on January 1, 2014 with no or limited prior expansion. Defines control states as those that did not expand under the ACA in 2014 or 2015 and had no or very limited prior expansions.

^dSame definition of expansion and control states as used in main analysis and in subscript *a* above, but states expanding in 2016 (Louisiana and Montana) are excluded.

^eThis item was asked to only a subset of the sample (Appendix Tables 4 and 5).

ACA, Affordable Care Act.

Appendix
Impacts of Medicaid Expansion on Health Among Women of Reproductive Age
Margerison et al.

Appendix Table 10. Multivariate Adjusted^a Estimates From Tables 2, 3, and Appendix Table 6 With Application of BRFSS Weights

Outcome	Medicaid expansion analysis (Table 2) (n=58,365)	Simulated eligibility analysis in 38 states + DC (Table 3) (n=212,325)	Simulated eligibility analysis in all states (Appendix Table 6) (n=282,869)
Health insurance			
Has healthcare coverage	7.4 (1.3, 13.4)	13.4 (6.2, 20.5)	10.2 (5.3, 15.2)
Access to health care			
Avoided seeking care due to cost	-4.2 (-8.8, 0.3)	-7.7 (-13.5, -1.9)	-5.8 (-9.6, -2.0)
Preventive health care			
Check-up in last year	3.9 (0.6, 7.2)	5.8 (0.5, 11.1)	4.1 (0.5, 7.6)
Ever had blood cholesterol checked	5.0 (0.0, 10.0)	7.4 (-0.3, 15.0)	2.4 (-4.9, 9.6)
Last cholesterol check within a year	-0.6 (-6.7, 5.6)	2.0 (-9.3, 13.3)	1.2 (-5.8, 8.2)
Overall health			
Self-rated health good/very good/excellent	1.1 (-1.7, 3.9)	1.3 (-1.3, 3.8)	1.6 (-0.4, 3.5)
Experienced physical health distress in past month	-0.4 (-3.5, 2.6)	-0.7 (-2.9, 1.5)	-0.3 (-2.3, 1.8)
Experienced mental health distress in past month	-1.8 (-5.7, 2.2)	-5.2 (-9.3, -1.1)	-5.5 (-8.7, -2.3)
Chronic disease			
Told high blood pressure	0.7 (-3.1, 4.6)	-1.2 (-5.7, 3.3)	-0.9 (-3.9, 2.2)
Told high cholesterol	0.1 (-5.8, 6.0)	-0.4 (-7.6, 6.8)	-0.7 (-6.3, 4.9)
Told diabetes	-0.2 (-1.5, 1.1)	0.2 (-1.8, 2.2)	0.5 (-0.8, 1.7)
Told prediabetes	1.2 (-1.7, 4.1)	-1.6 (-6.4, 3.3)	-1.1 (-5.3, 3.1)
Currently taking blood pressure medication ^b	0.2 (-9.6, 9.9)	-3.4 (-23.2, 16.3)	10.7 (-7.9, 29.2)
Currently takes insulin ^b	0.8 (-12.6, 14.2)	51.2 (-21.7, 124.1)	44.9 (-4.8, 94.5)
Health behaviors			

Appendix
Impacts of Medicaid Expansion on Health Among Women of Reproductive Age
Margerison et al.

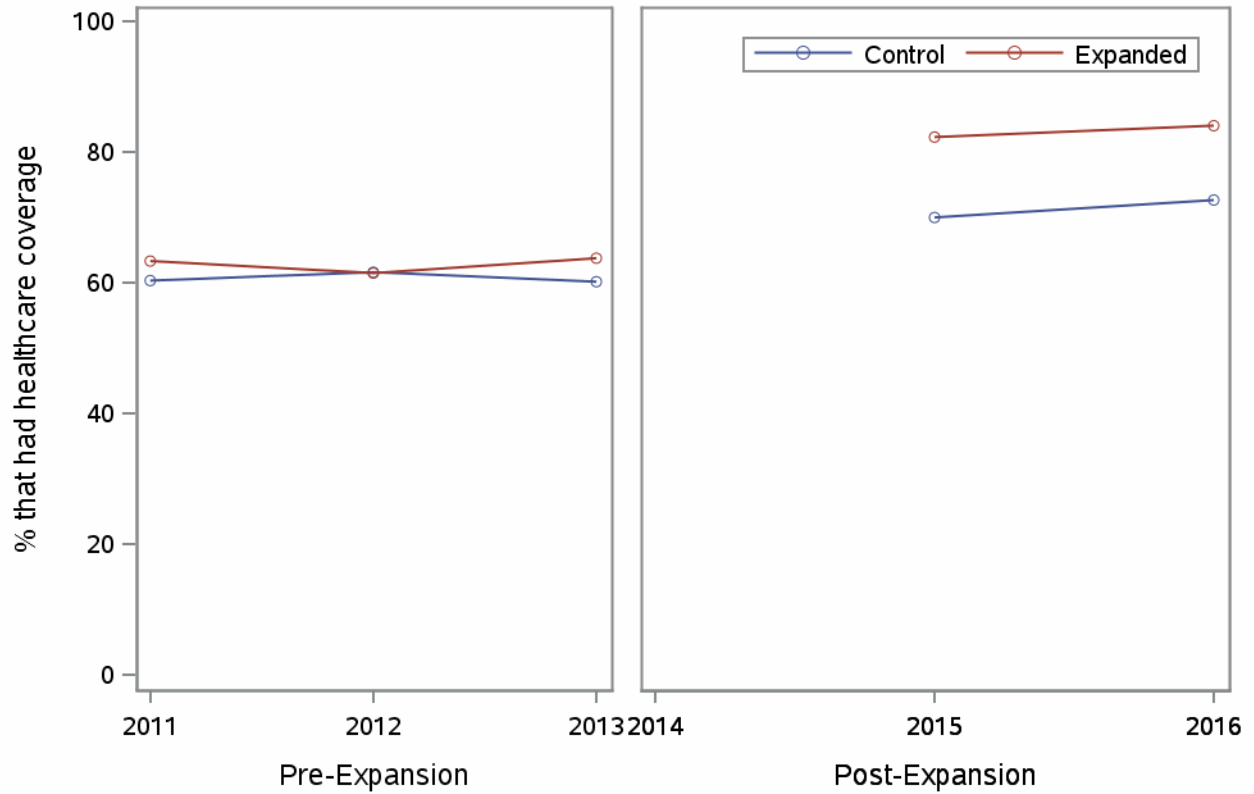
Smoking cessation attempt in last year ^b	-0.2 (-5.2, 4.8)	-10.7 (-20.4, -1.0)	-6.6 (-14.2, 1.1)
Underweight or normal weight vs overweight or obese	-0.6 (-2.2, 1.0)	-2.9 (-7.8, 2.0)	-0.4 (-4.4, 3.6)
Binge drinking	-0.9 (-2.8, 0.9)	-7.8 (-12.6, -2.9)	-5.4 (-8.9, -1.8)
Heavy drinking	-1.9 (-3.0, -0.9)	-3.4 (-6.8, -0.0)	-3.2 (-6.4, 0.1)

Note: Boldface indicates statistical significance ($p < 0.05$).

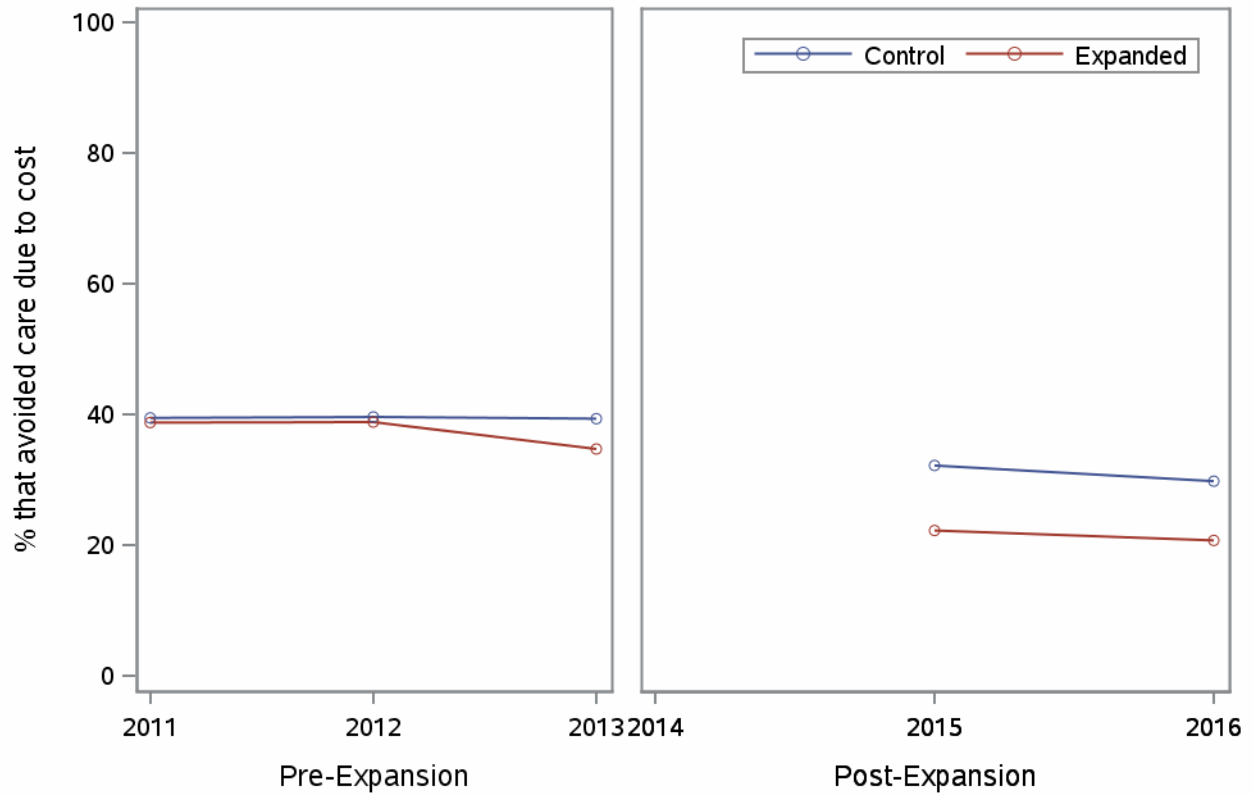
^aModels additionally adjusted for state, year, race, education, marital status, dependent children, age group, employment status, household size, income group, and state average unemployment rate.

^bThis item was asked to only a subset of the sample (Appendix Tables 4 and 5).

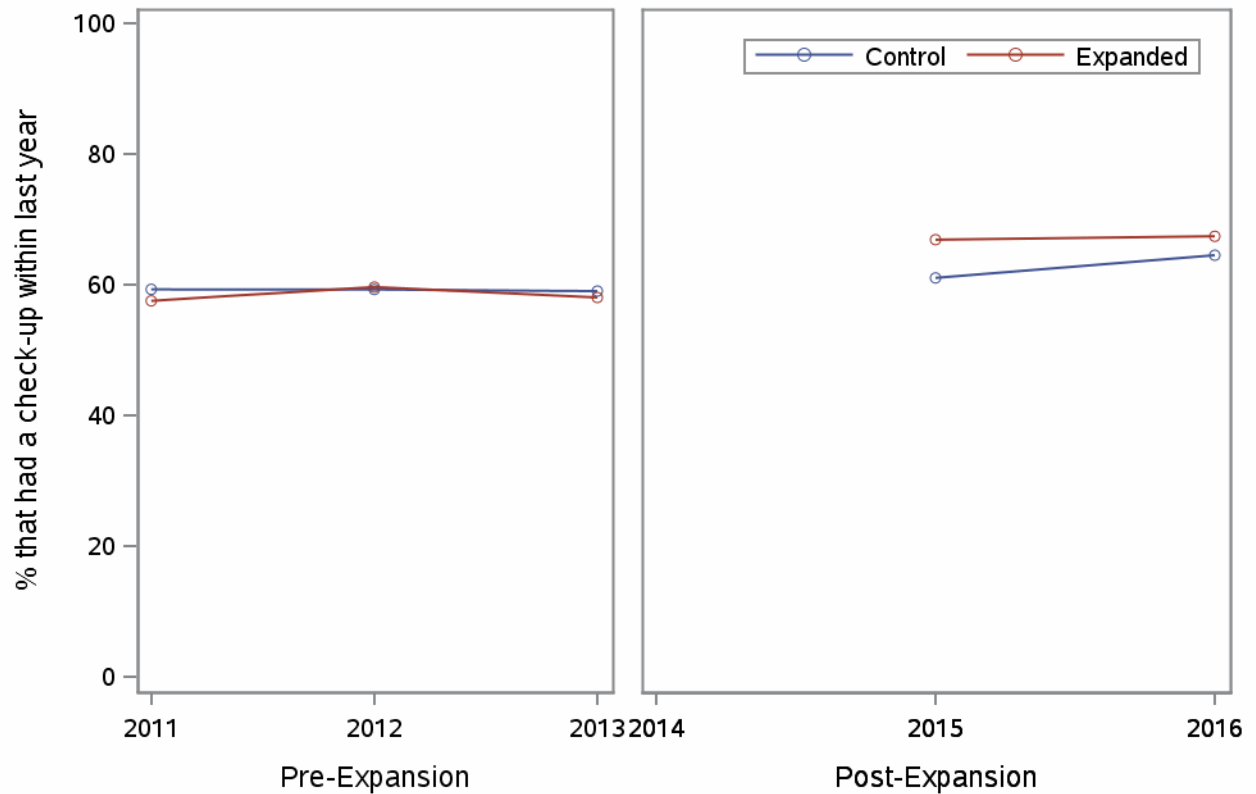
Parallel Trends Assumption Check: Healthcare Coverage



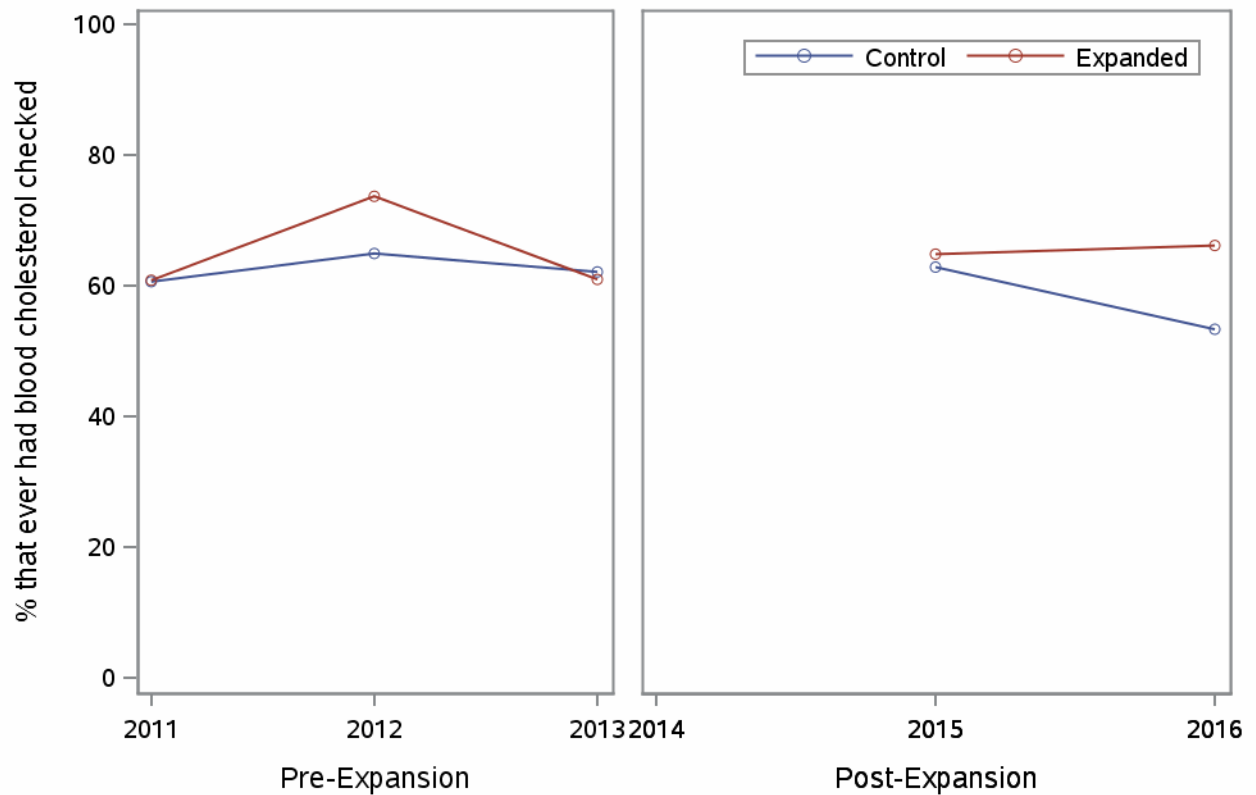
Parallel Trends Assumption Check: Avoided Seeking Care Due to Cost



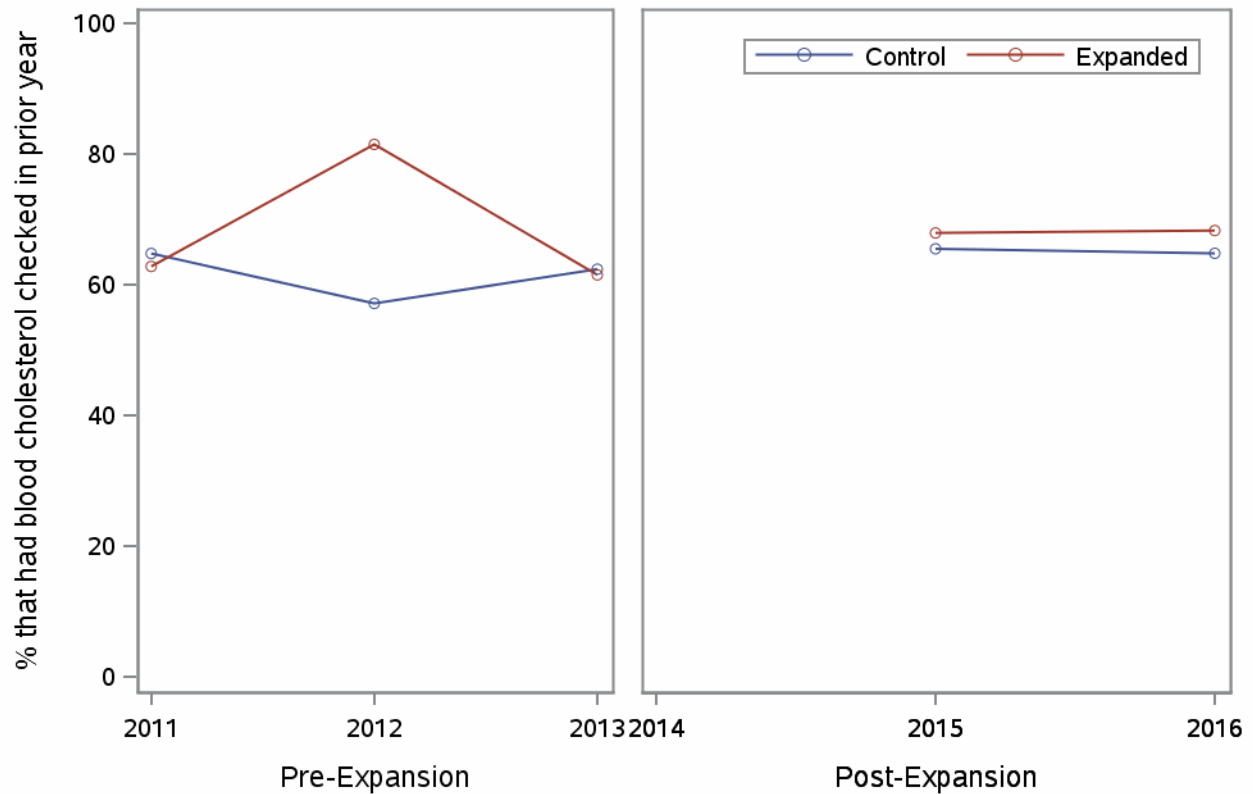
Parallel Trends Assumption Check: Check-up in Last Year



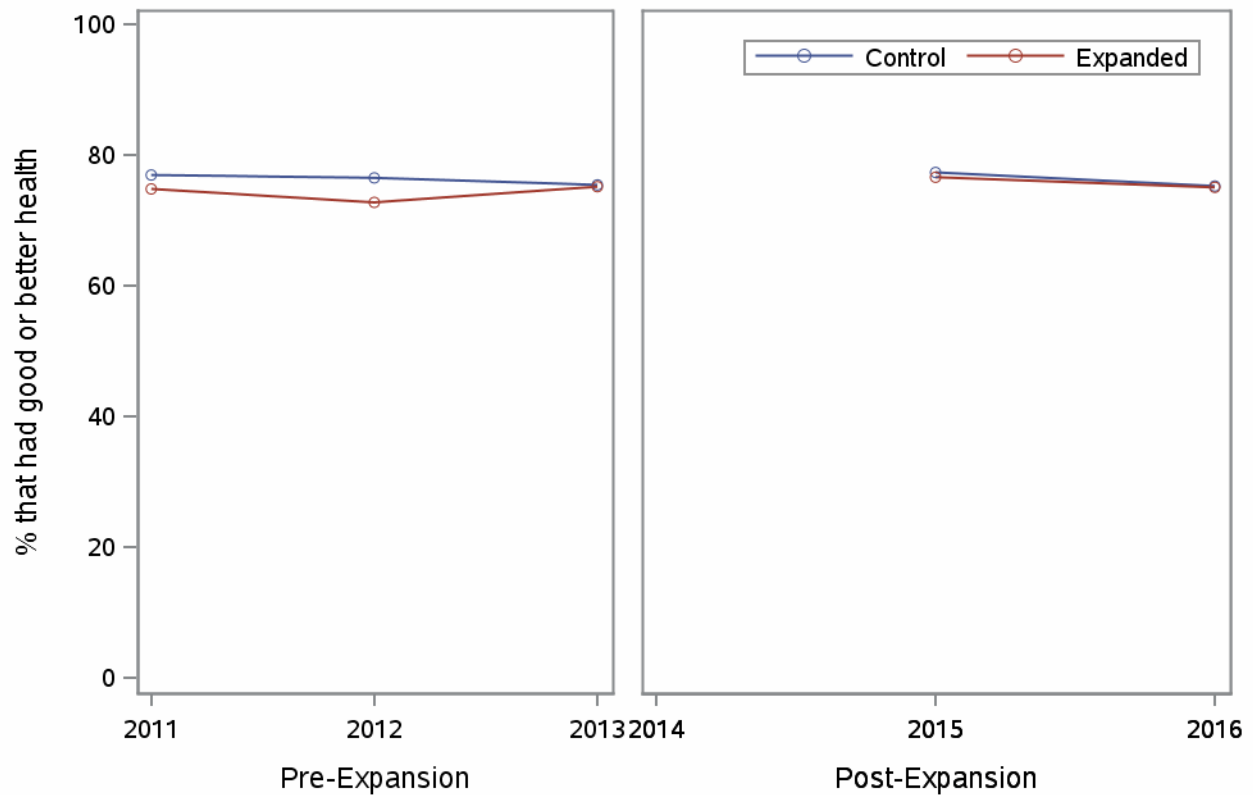
Parallel Trends Assumption Check: Blood Cholesterol Check



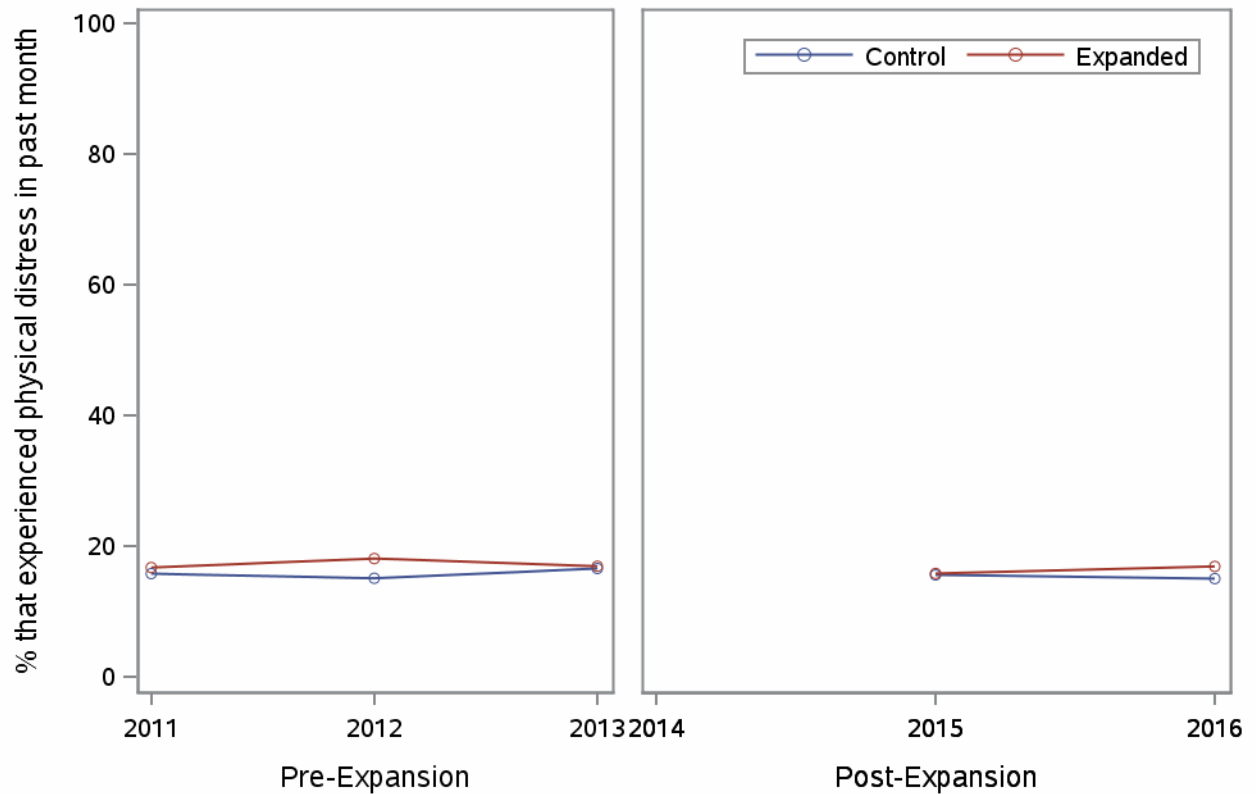
Parallel Trends Assumption Check: Blood Cholesterol Checked in Prior Year



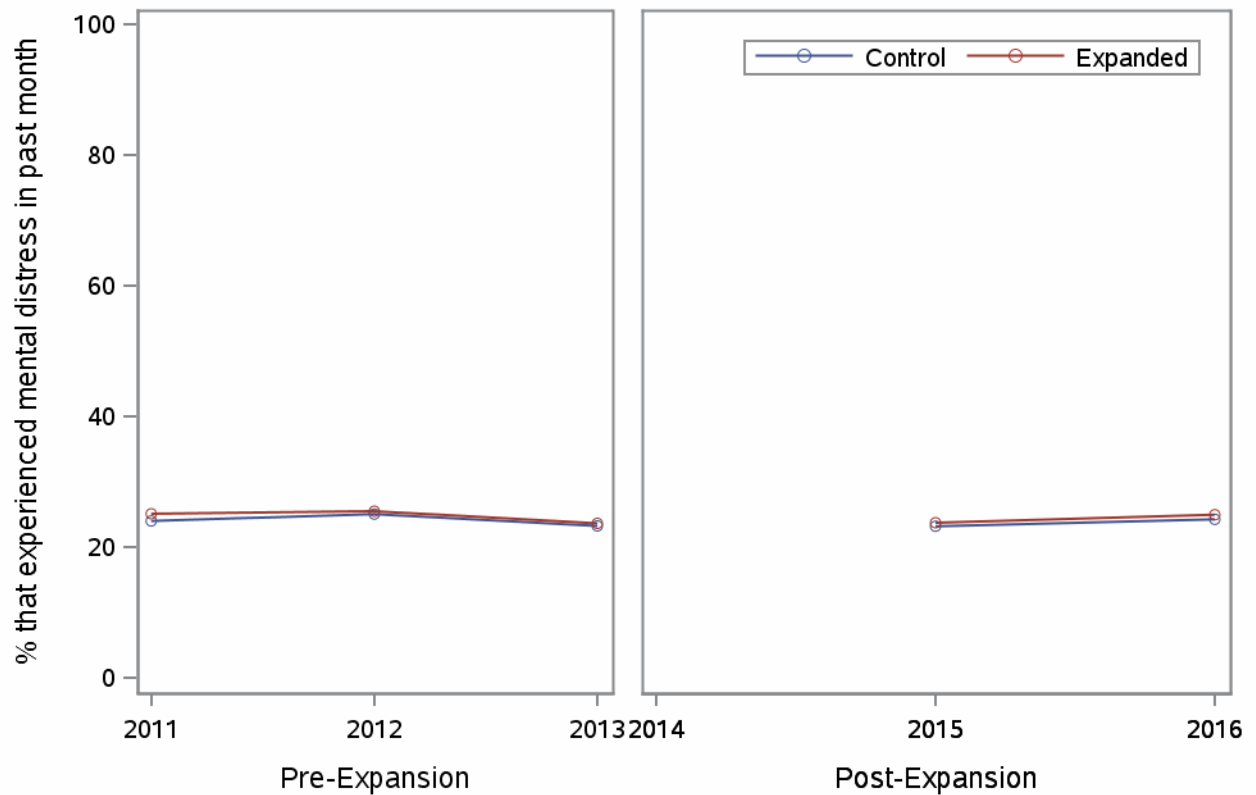
Parallel Trends Assumption Check: Self-Reported Health



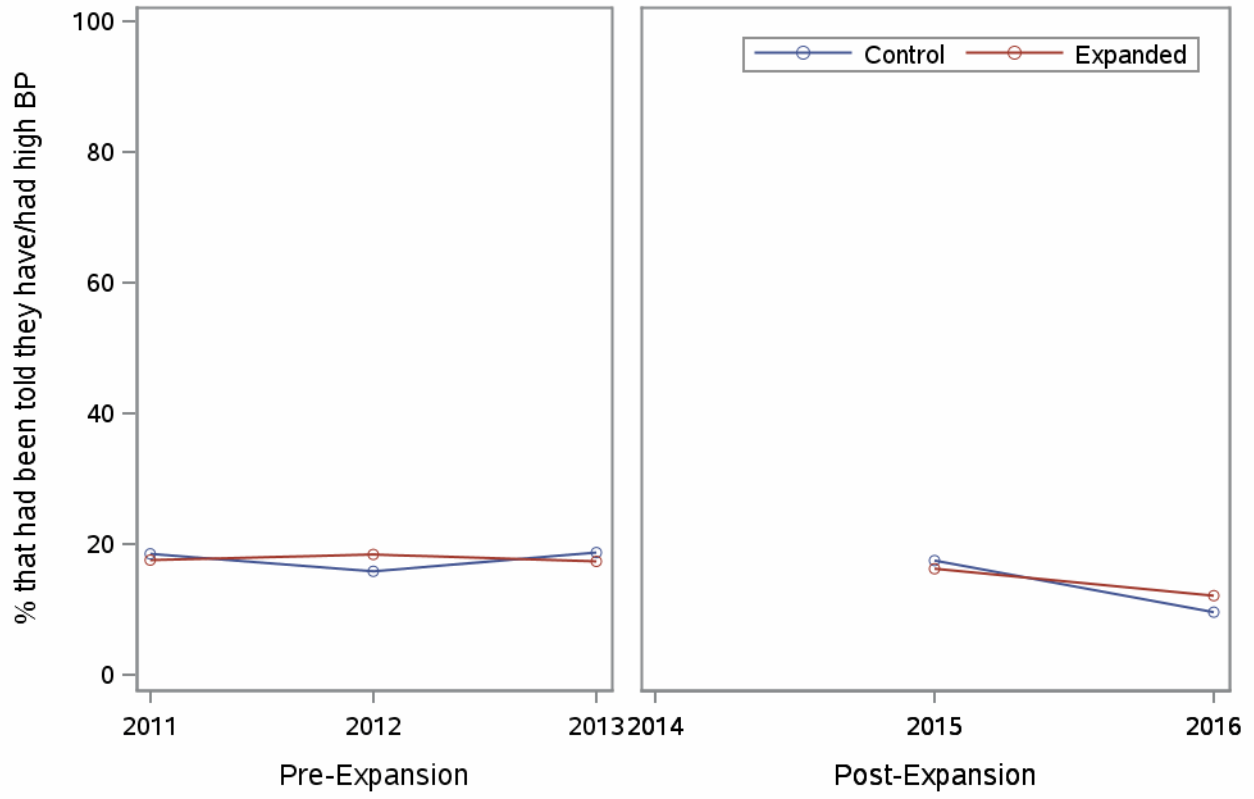
Parallel Trends Assumption Check: Physical Health Distress



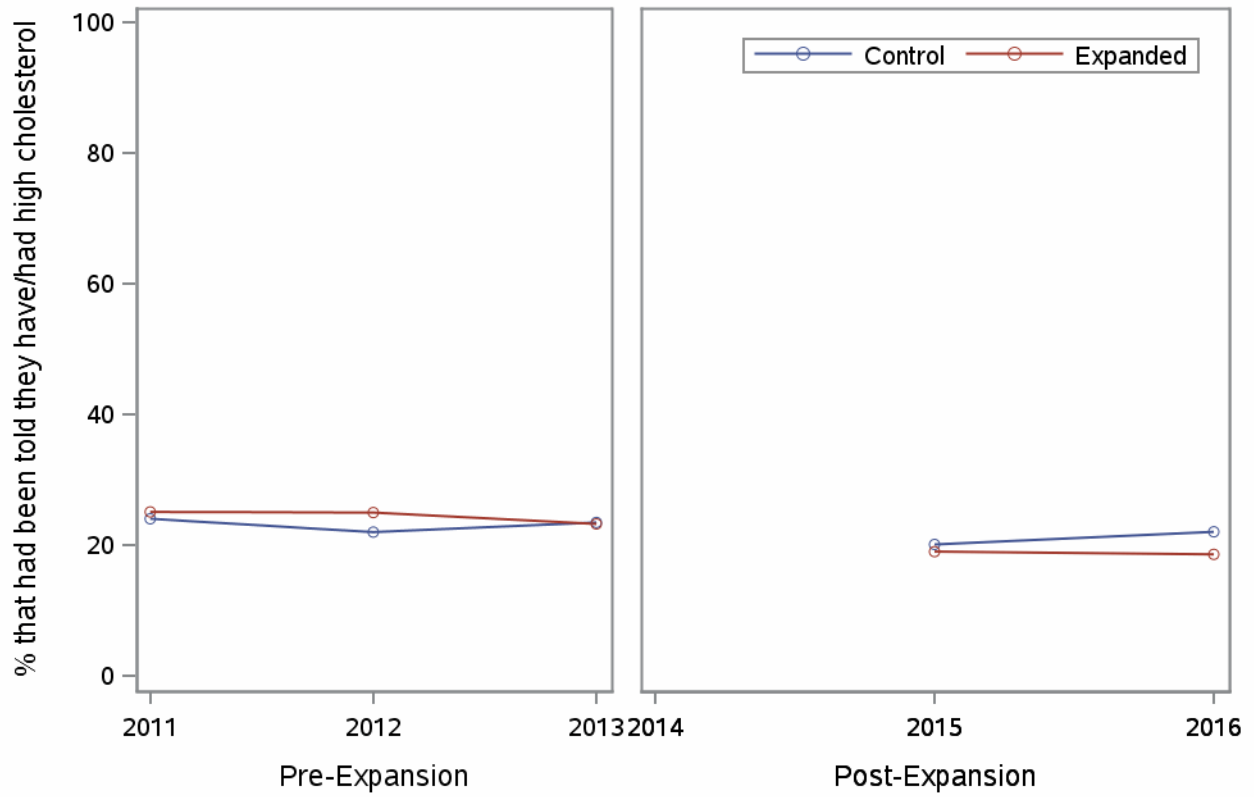
Parallel Trends Assumption Check: Mental Health Distress



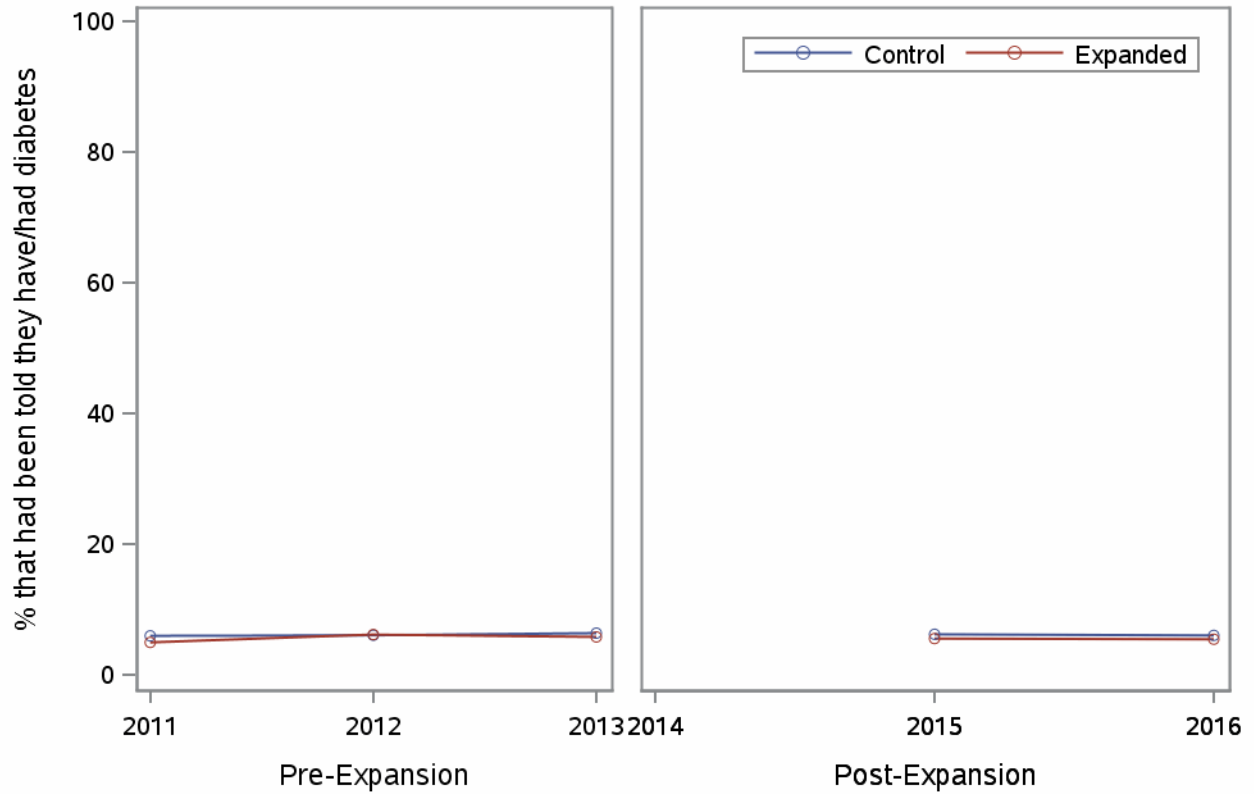
Parallel Trends Assumption Check: High Blood Pressure (BP)



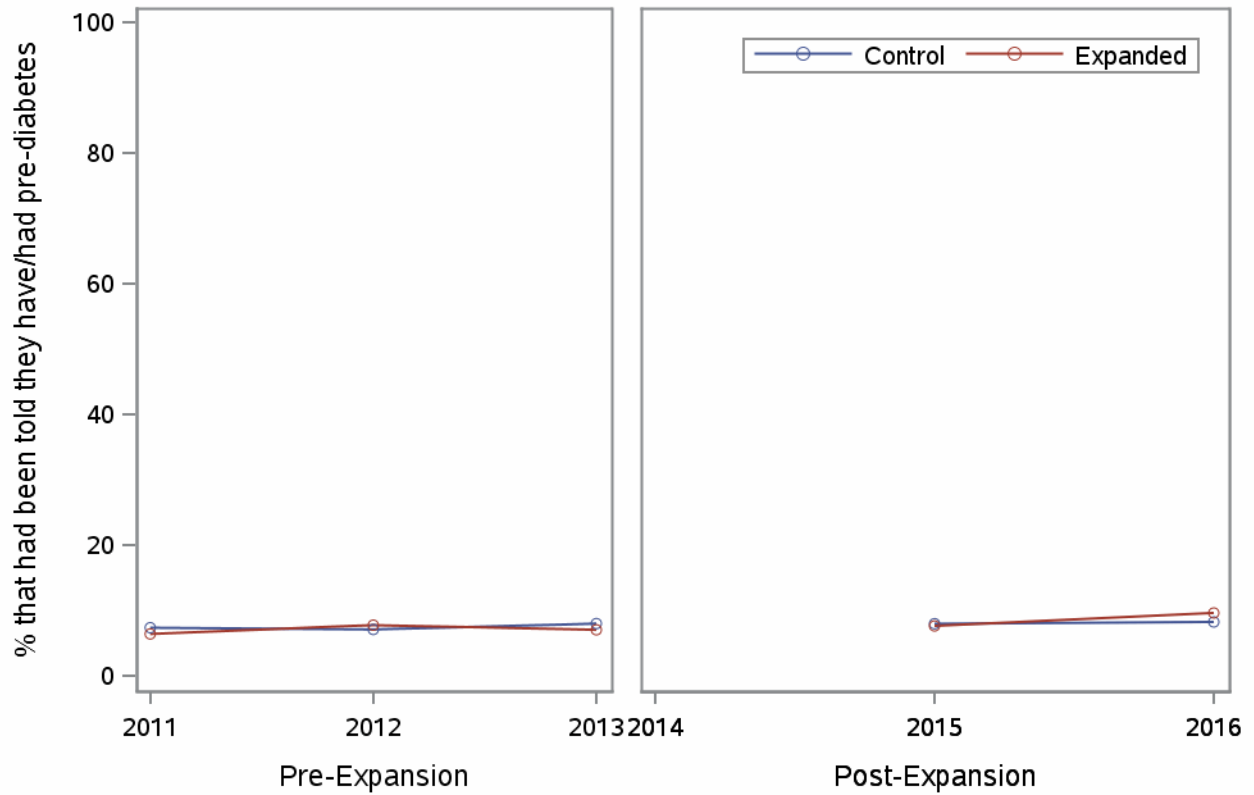
Parallel Trends Assumption Check: High Cholesterol

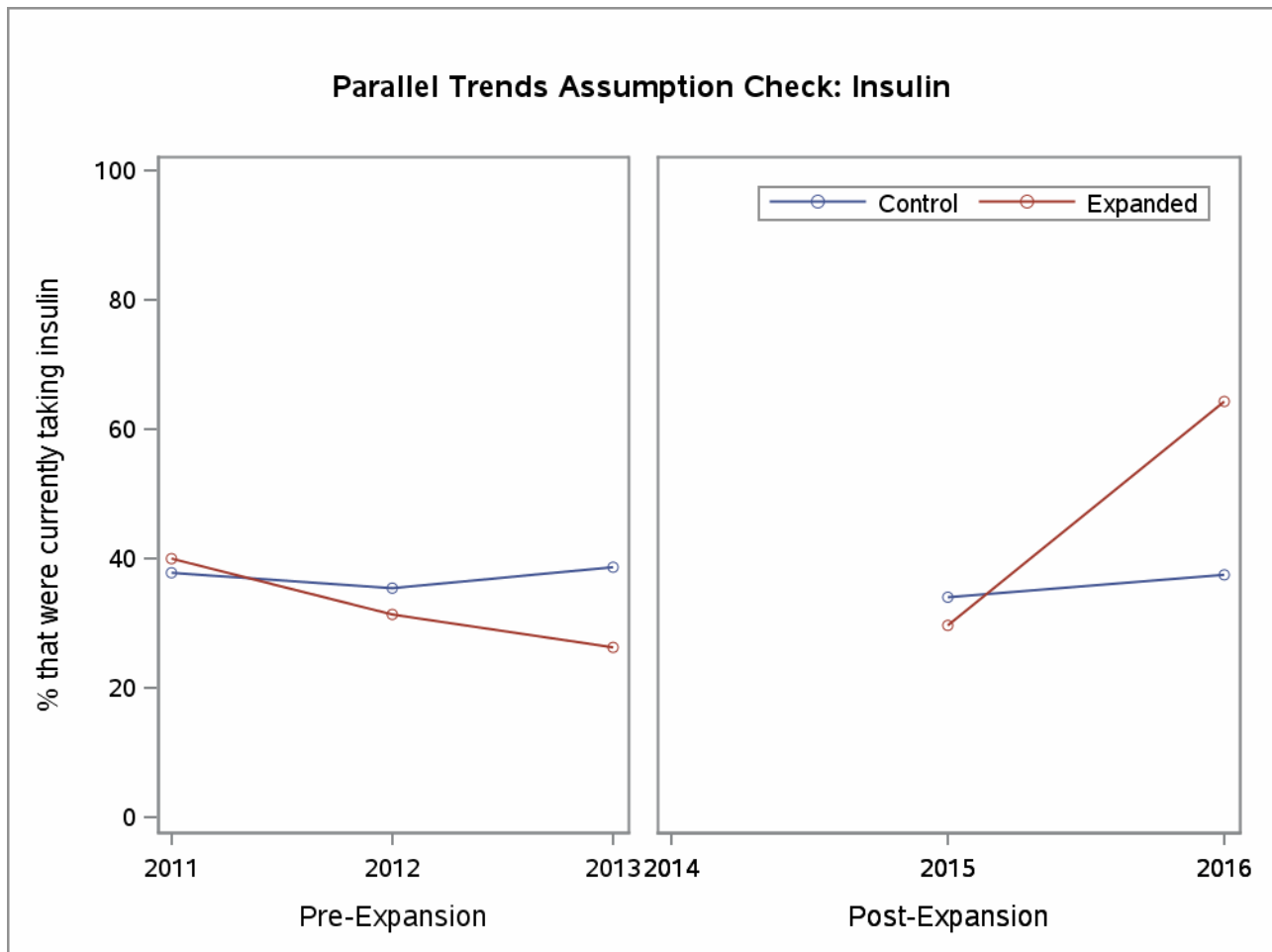
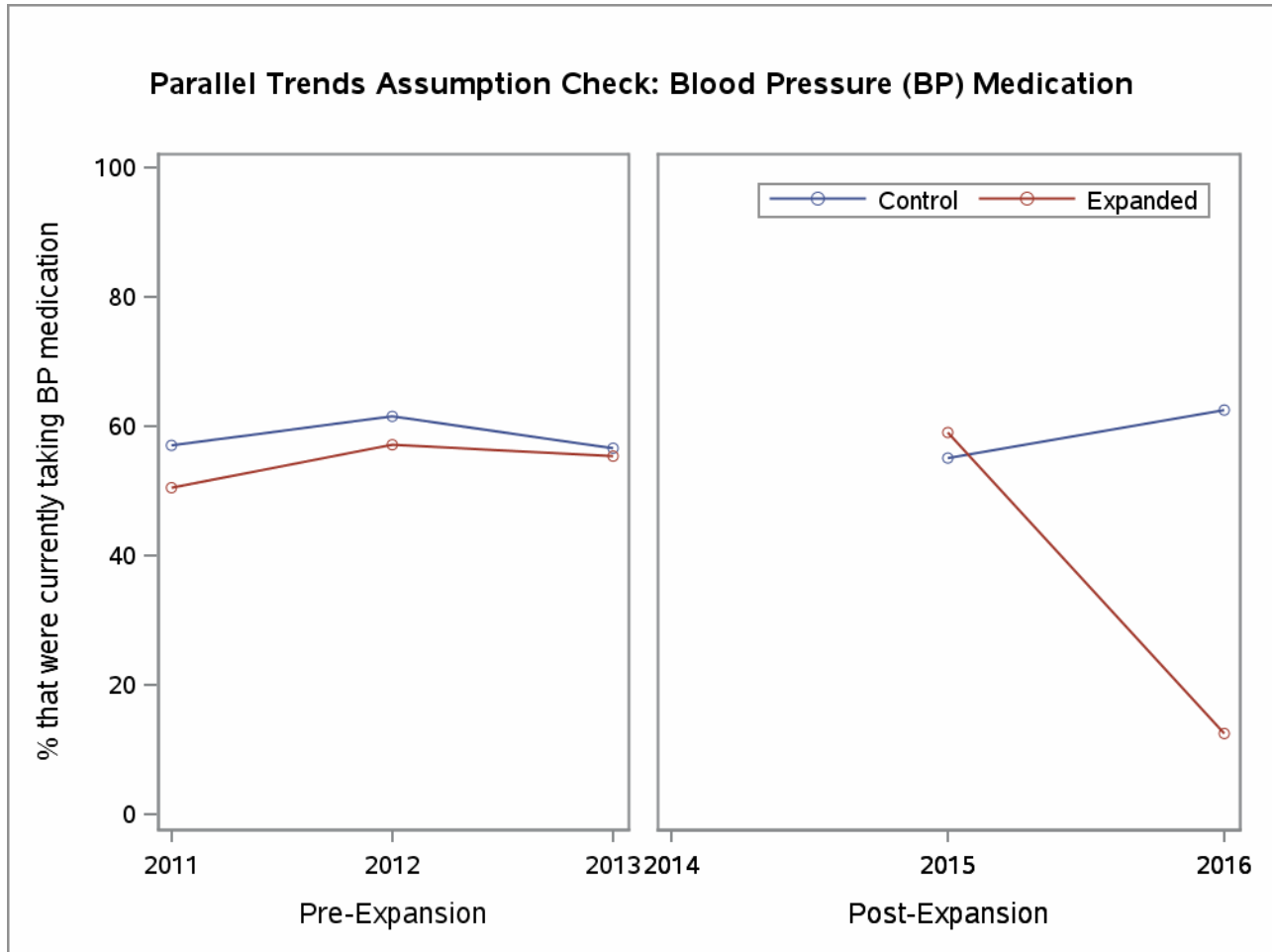


Parallel Trends Assumption Check: Diabetes

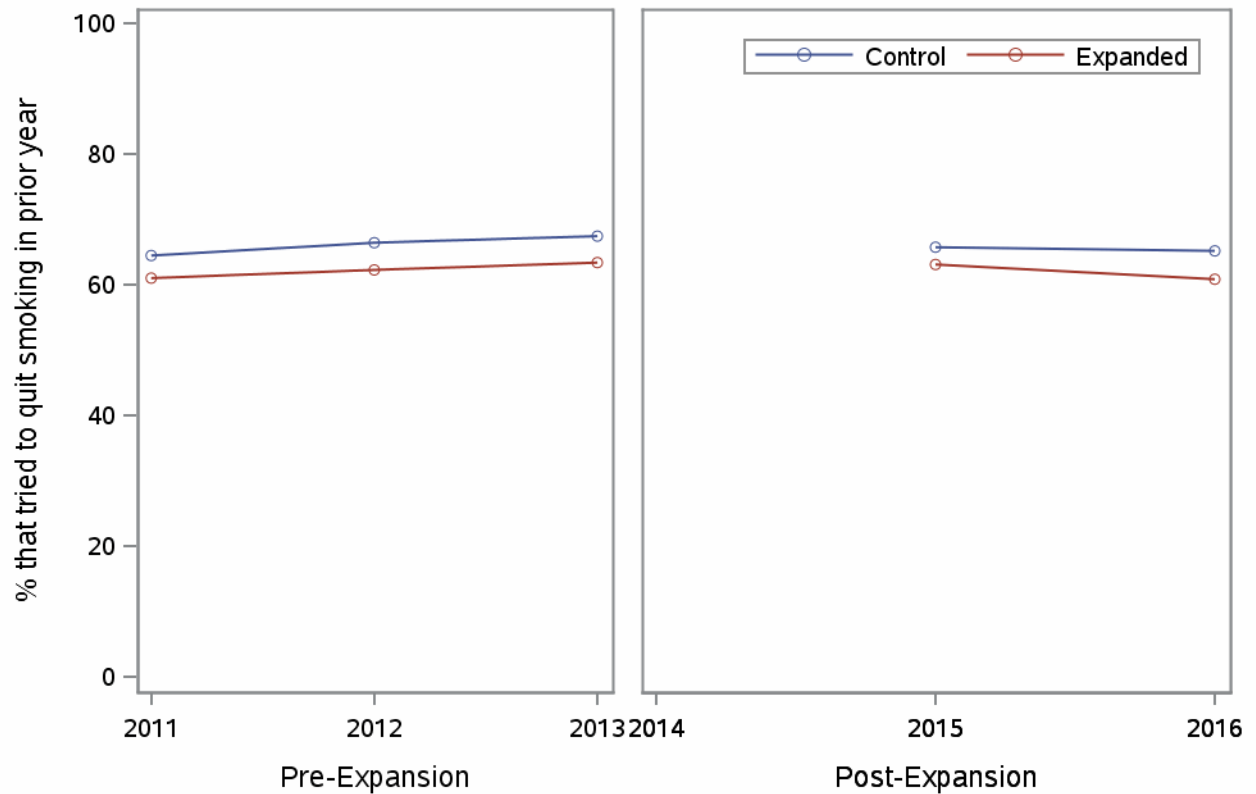


Parallel Trends Assumption Check: Pre-Diabetes (or Borderline Diabetes)

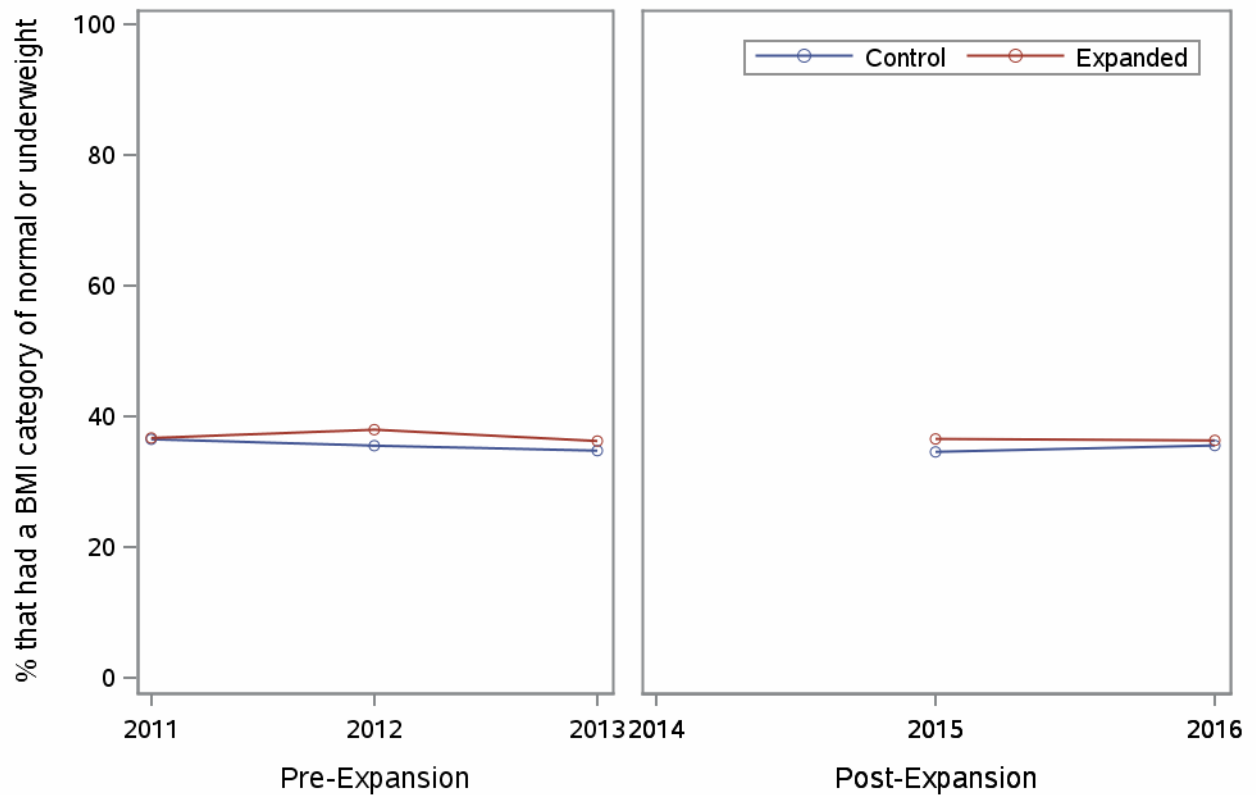




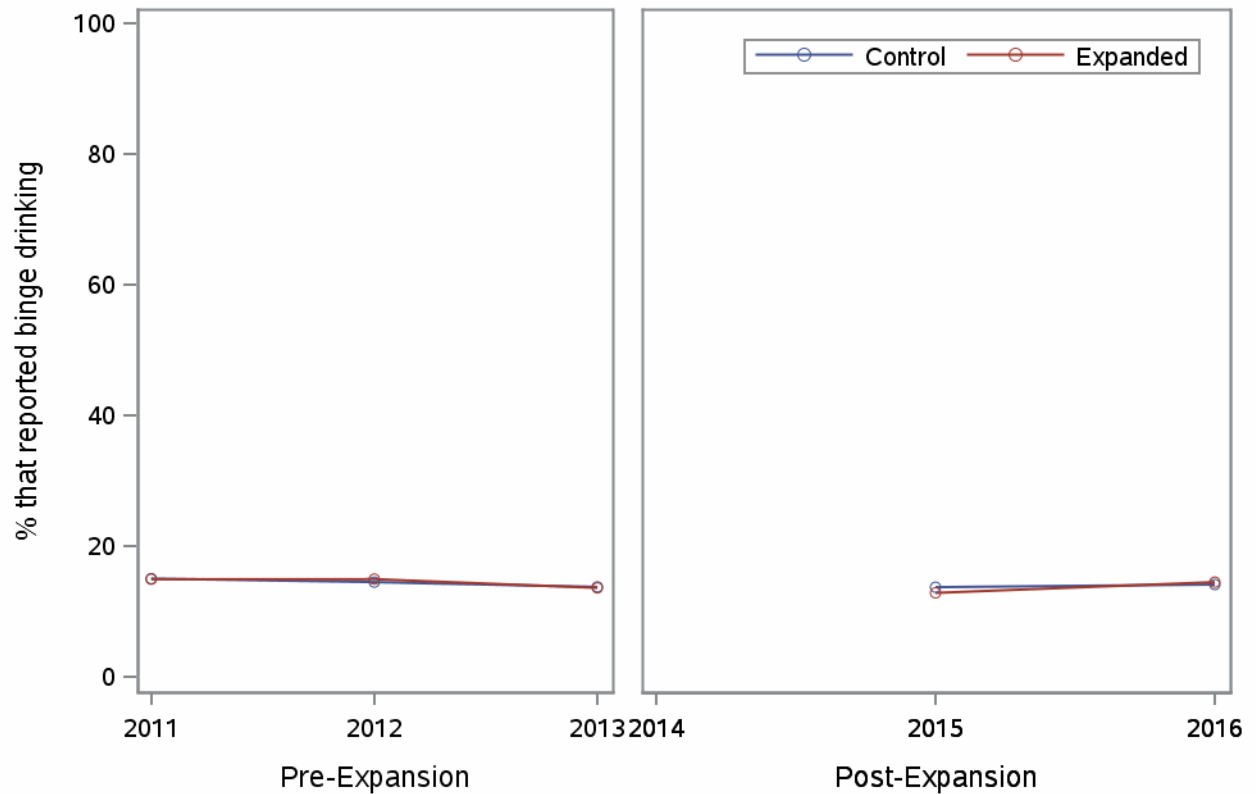
Parallel Trends Assumption Check: Smoking Cessation Attempts



Parallel Trends Assumption Check: BMI Category



Parallel Trends Assumption Check: Binge Drinking



Parallel Trends Assumption Check: Heavy Drinking

