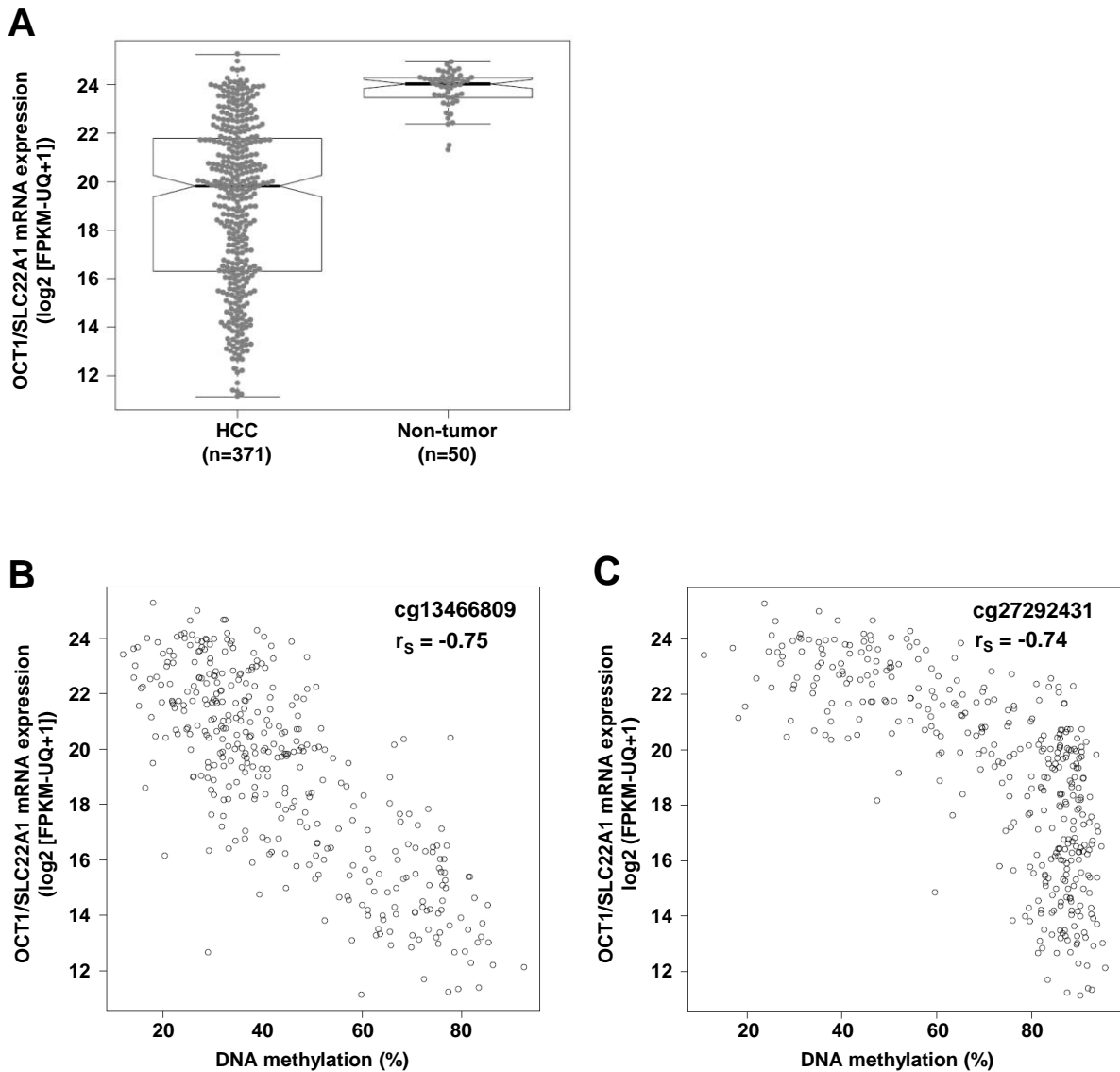


Figure S5: Expression and DNA methylation of OCT1/SLC22A1 in HCC and non-tumor tissue of the TCGA cohort.



(A) OCT1 mRNA expression was significantly decreased in HCC tissue compared to non-tumor liver tissue. (B, C) Correlation of OCT1 mRNA expression in the 371 HCC samples with DNA methylation of individual CpG sites in the 5'-UTR/exon 1 of OCT1.

FPKM-UQ+1: fragments per kilobase of transcript per million mapped reads upper quartile