

Figure S1. CycA Δ 80 R211A mutant fails to bind to CDK2.

10 μ g of mtCycA WT, Δ 80, or Δ 80 R211A expression vector was transfected into HEK293 cells. Cell lysates were immunoprecipitated with anti-myc tag antibody and subjected to western analysis using anti-myc tag and anti-CDK2 antibodies.

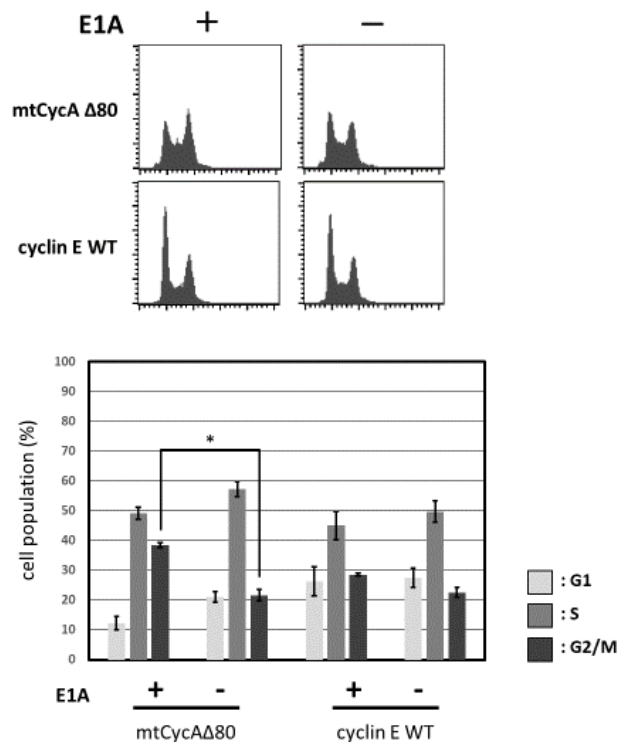


Figure S2. Cyclin E and E1A co-expression does not induce G2/M-phase arrest.

10 μ g of mtCycA Δ 80 or cyclin E WT expression vector was co-transfected with 5 μ g of E1A and 1 μ g of GFP vectors in MDAH041 cells, and cell cycle profiles of the GFP-positive cells were analyzed by flow cytometry (top). Cell cycle distributions are shown in the bottom panel. * p < 0.05

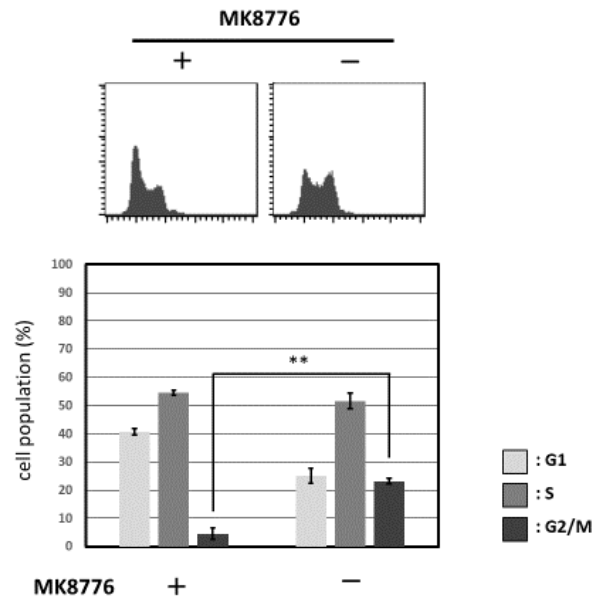


Figure S3. G2/M-phase arrest is also induced by CycA Δ 80 overexpression without E1A via ATR-Chk1 pathway.

MDAH041 cells co-transfected with 10 μ g of mtCycA Δ 80 and 1 μ g of GFP vectors were treated with 1 μ M MK8776 for 24h, and cell cycle profiles of the GFP-positive cells were analyzed by flow cytometry (top). Cell cycle distributions are shown in the bottom panel. ** $p < 0.01$