

Figure S1. Brain MRI at diagnosis of pulmonary cryptococcosis

Axial T1-weighted contrast-enhanced sequence that shows punctate enhancing cerebellar lesion.

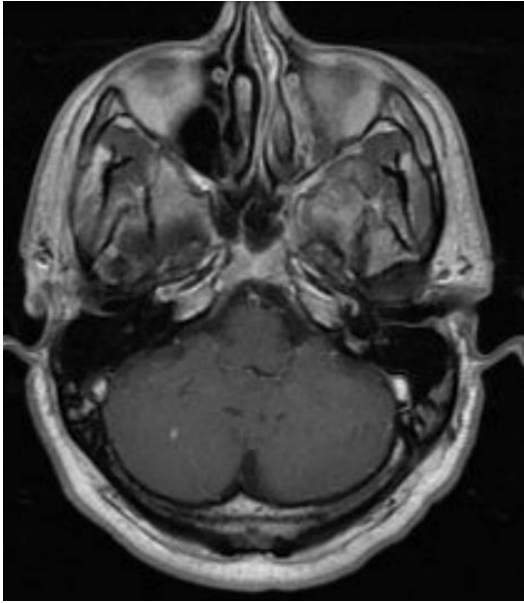


Figure S2. Brain MRI 3 months after discontinuing fingolimod, initiating glatiramer acetate, and reporting clinical relapse in interim

New T2-weighted/FLAIR non-enhancing brainstem lesion.

