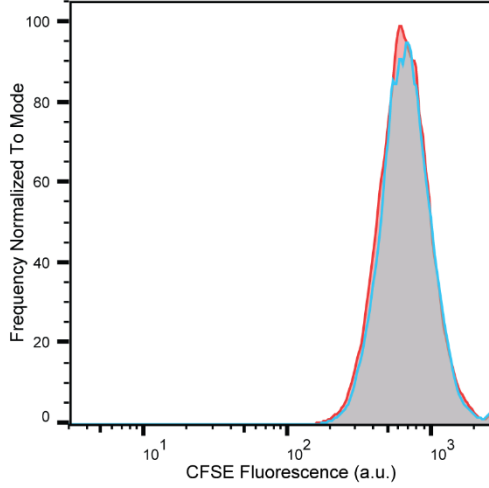
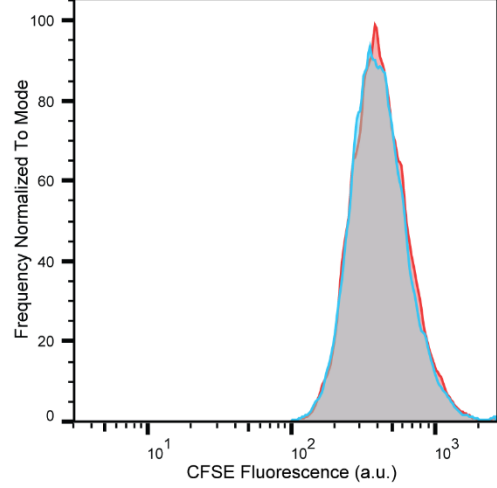


Supplementary materials:

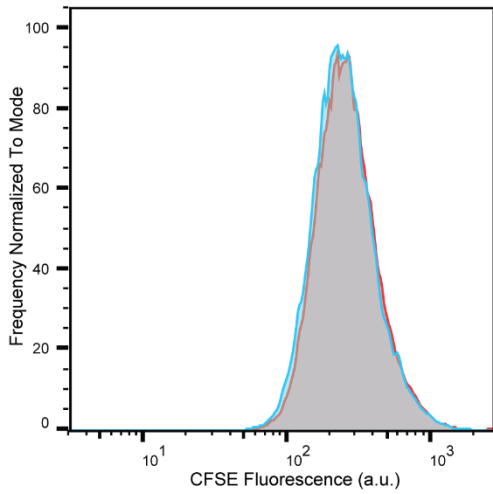
	Sample Name	Count
■	Treated 24h	13095
■	Control 24h	18724



	Sample Name	Count
■	Treatment 48h	22078
■	Control 48h	19458



	Sample Name	Count
■	Treated 72h	25273
■	Control 72h	64446



	Sample Name	Count
■	Treated 96h	54445
■	Control 96h	91392

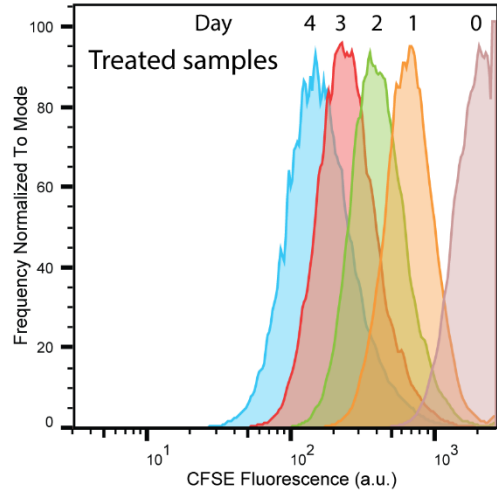
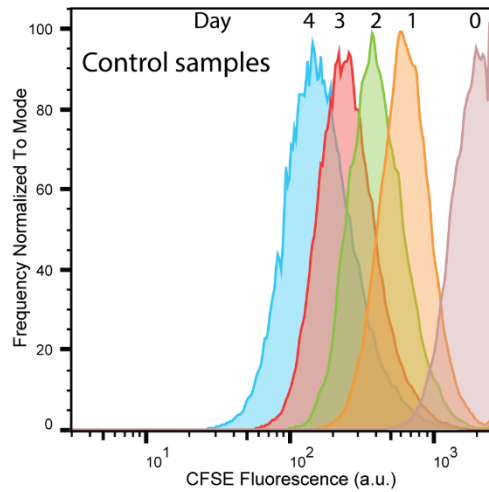
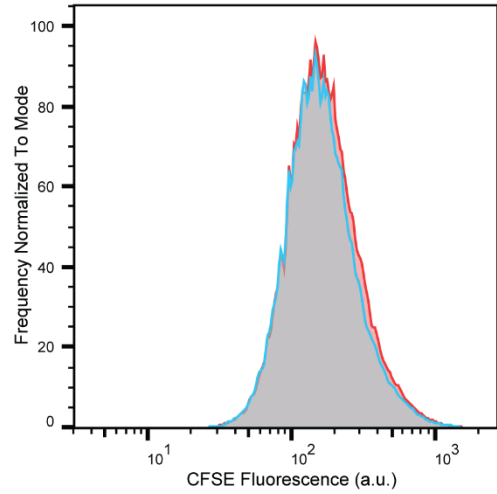


Figure S1. Hormonal exposure and removal during Ishikawa cell culture does not affect cell division rate. Flow cytograms of cells loaded with CFSE at $t=0$ and exposed to oestrogen and progesterone for 48 hours. After the initial 48, hormones were removed for another 48 hours. CFSE intensity per cell was measured by flow cytometry at 24 hour intervals during this experiment.

Supplementary Movie 1: 3D NanoSIMS analysis of nascent phospholipid distribution in Ishikawa cell after pulse-chase labelling with deuterated choline. Movie corresponds to Figure 5