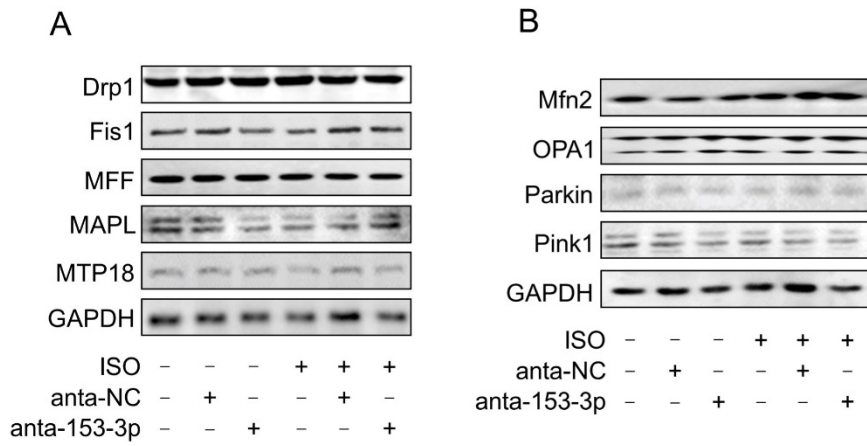


## Supplementary figure legends

**Supplementary Figure 1. The effect of miR-153-3p on the regulation of mitochondrial dynamics related proteins.** (A) Cardiomyocytes were transfected with anta-153-3p or anta-NC, and then were treated with ISO. 24h after treatment, cells were harvested and the expression of Drp1, Fis1, MFF, MAPL and MTP18 were detected by immunoblot. (B) Cardiomyocytes were treated as described in (A), Mfn2, OPA1, Parkin and Pink1 levels were detected by immunoblot.

**Supplementary Figure 2. The detection of Mfn1 expression levels.** (A) Cardiomyocytes were infected with wild-type Mfn1-3'UTR adenovirus (Mfn1-3'UTR-wt) and then were transfected with mimic-153-3p or mimic-NC. 24h after transfection, cells were harvested, and Mfn1 expression was detected by immunoblot. (B) Cardiomyocytes were infected with adenovirus expressing mutated Mfn1-3'UTR (Mfn1-3'UTR-mut) and then were transfected with mimic-153-3p or mimic-NC. 24h after transfection, cells were harvested, and Mfn1 expression was detected by immunoblot.

Supplementary Figure 1



Supplementary Figure 2

