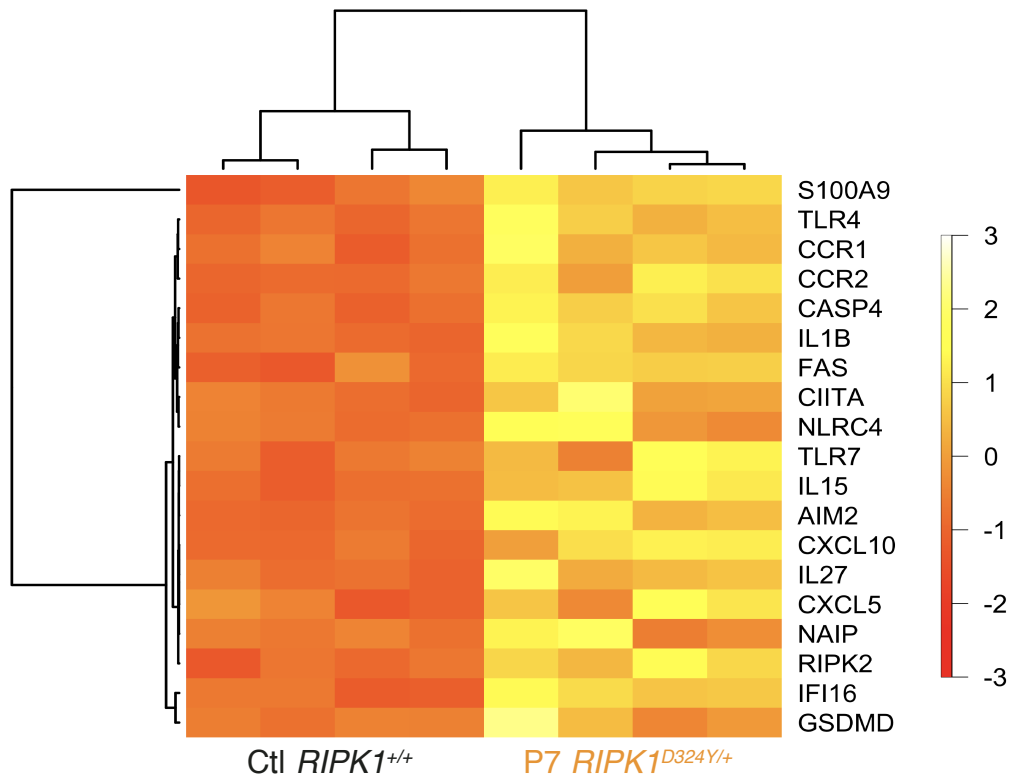


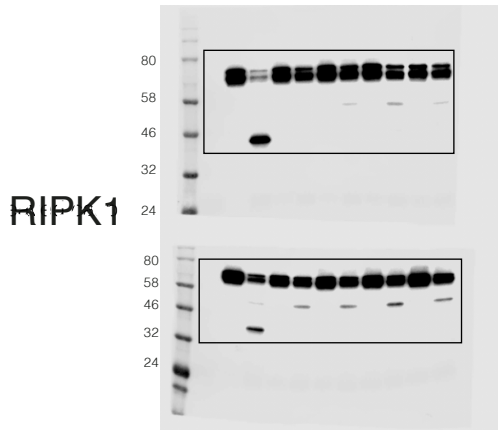
Supplementary Figure 1



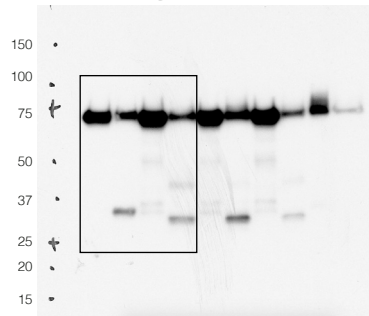
Supplementary Figure 1 | RNA sequencing of whole blood RNA from P7 (two time points, as in Fig. 1c) and 2 unrelated adolescent healthy controls, both with technical duplicates. Heatmap shows differentially expressed inflammatory response genes (GO:0006954).

Supplementary Figure 2

Figure 1f

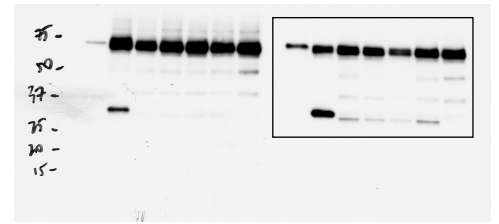


Extended Data Figure 5a



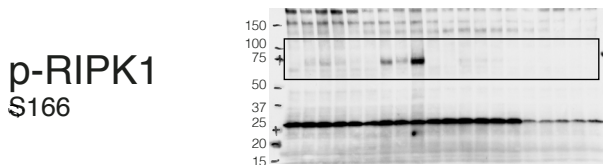
reprobe of RIPK1

Extended Data Figure 5b

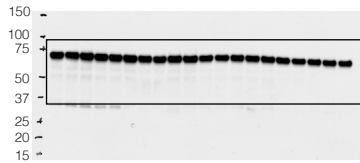


ACTIN

Figure 3b



RIPK1



reprobe of p-RIPK1

p-RIPK3
T231, S232

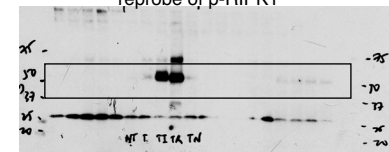
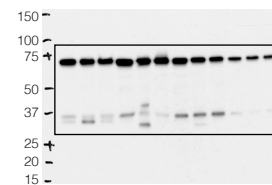
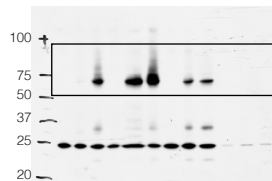
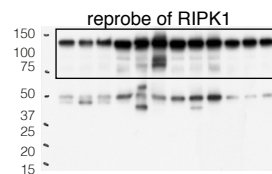


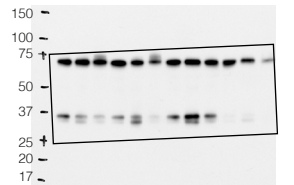
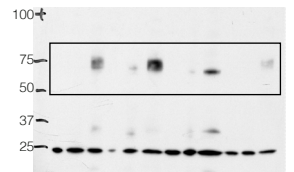
Figure 3d



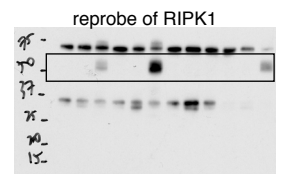
reprobe of RIPK1



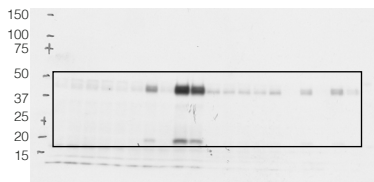
Extended Data Figure 4d



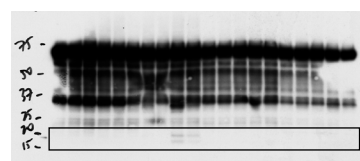
reprobe of RIPK1



cleav.
CASP-8

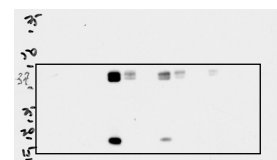
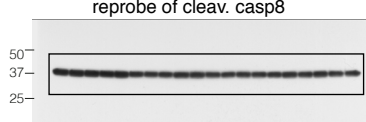


cleav.
CASP-3

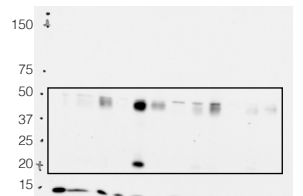
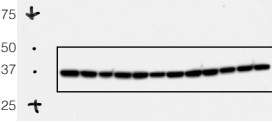


reprobe of cleav. casp8

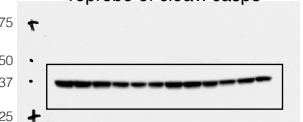
ACTIN



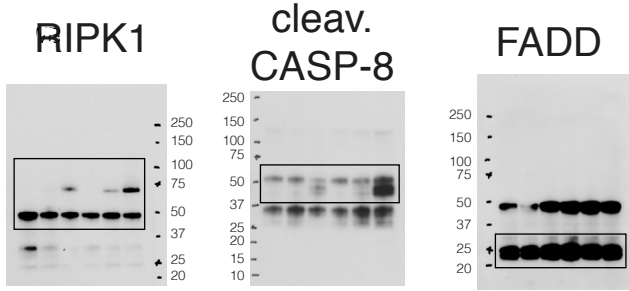
reprobe of cleav. casp8



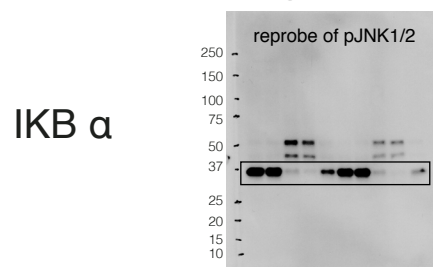
reprobe of cleav. casp8



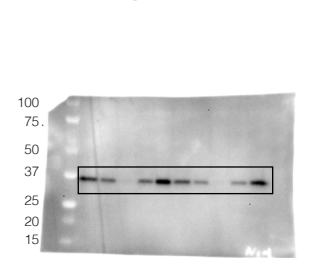
Extended Data Figure 4g



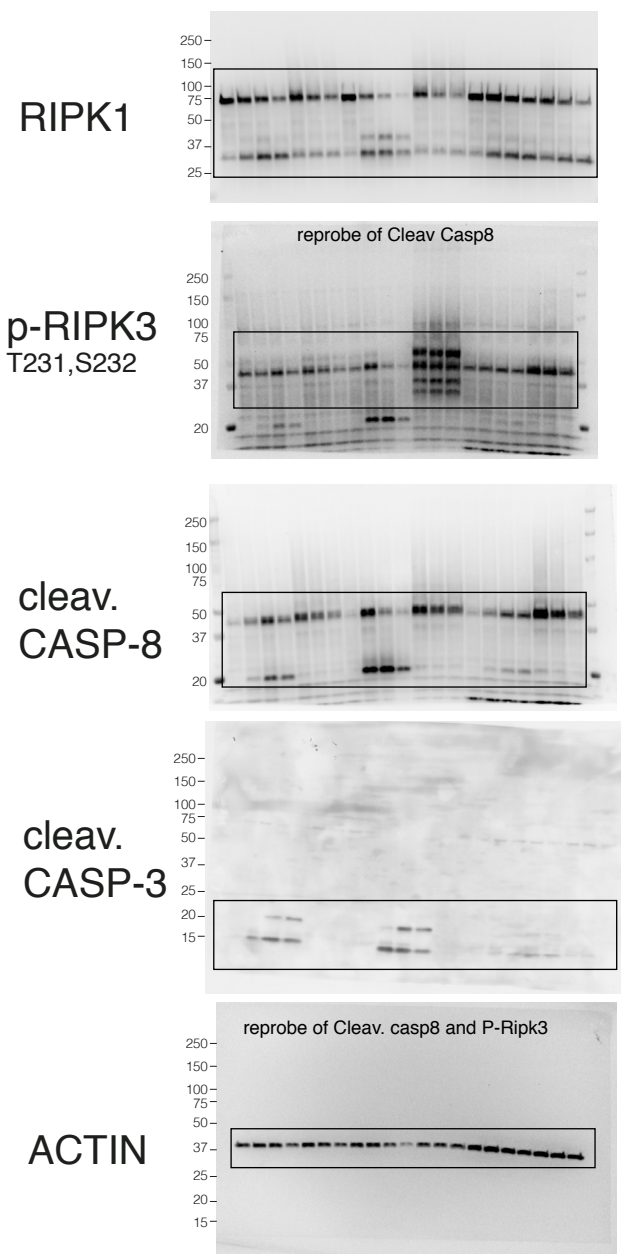
Extended Data Figure 6e



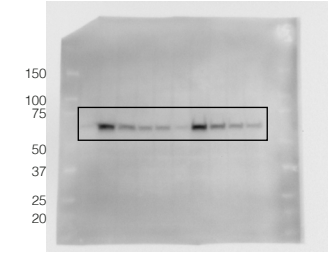
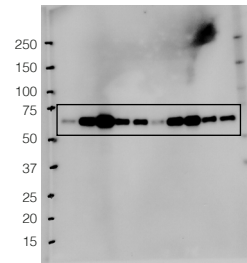
Extended Data Figure 6f



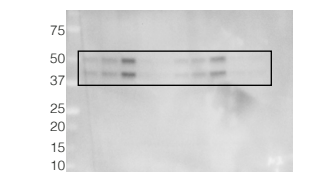
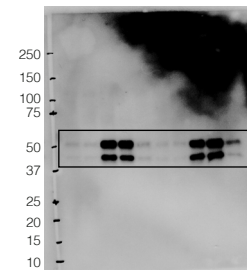
Extended Data Figure 4e



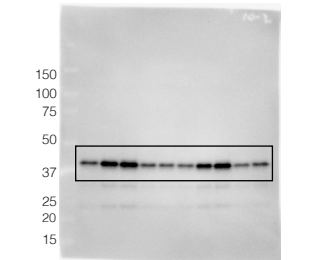
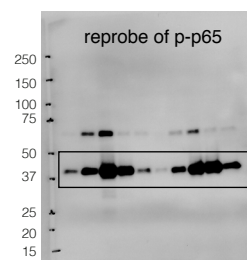
p-P65



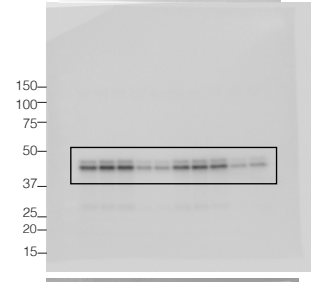
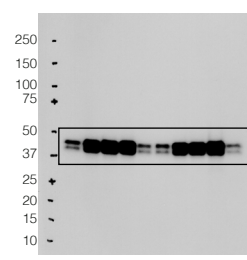
p-JNK1/2



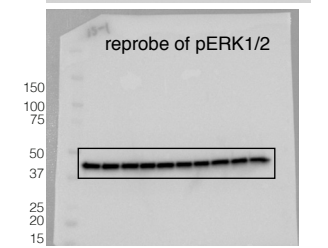
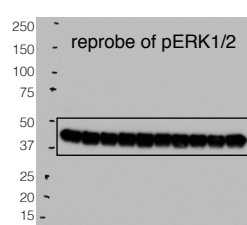
p-P38



p-ERK1/2



ACTIN



Extended Data Figure 4f

