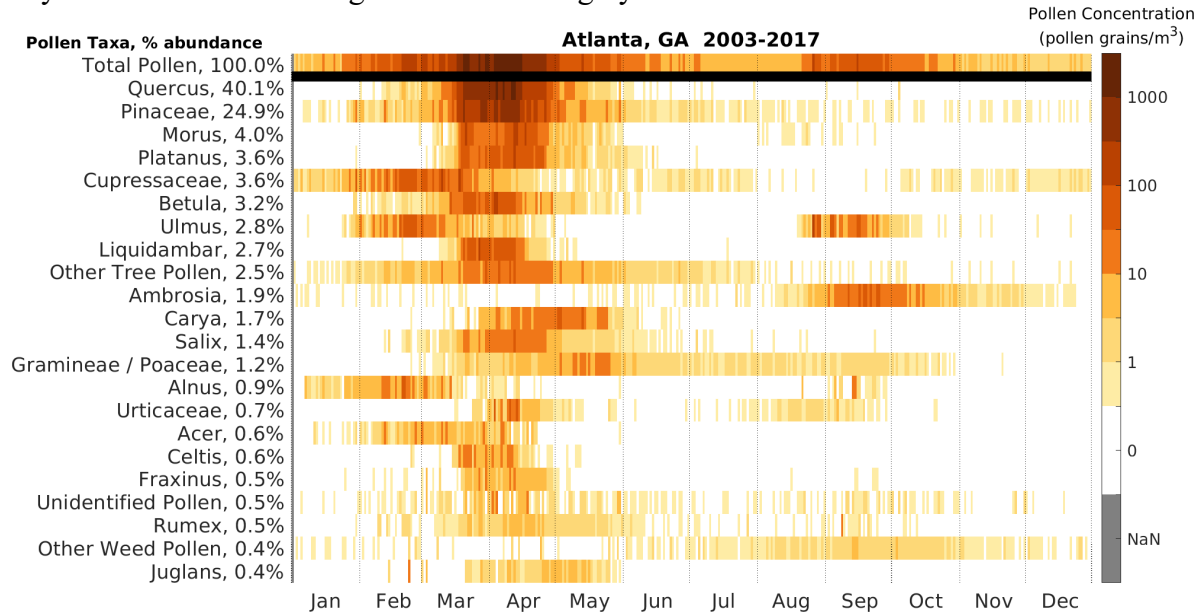


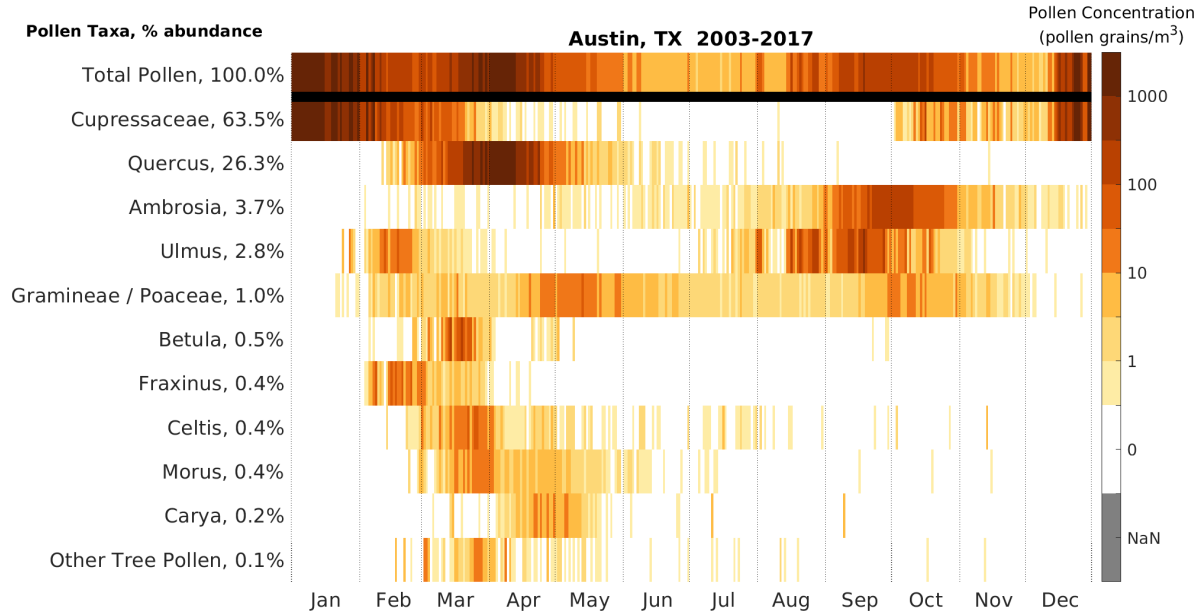
1 **Location-specific Pollen Calendars**

2

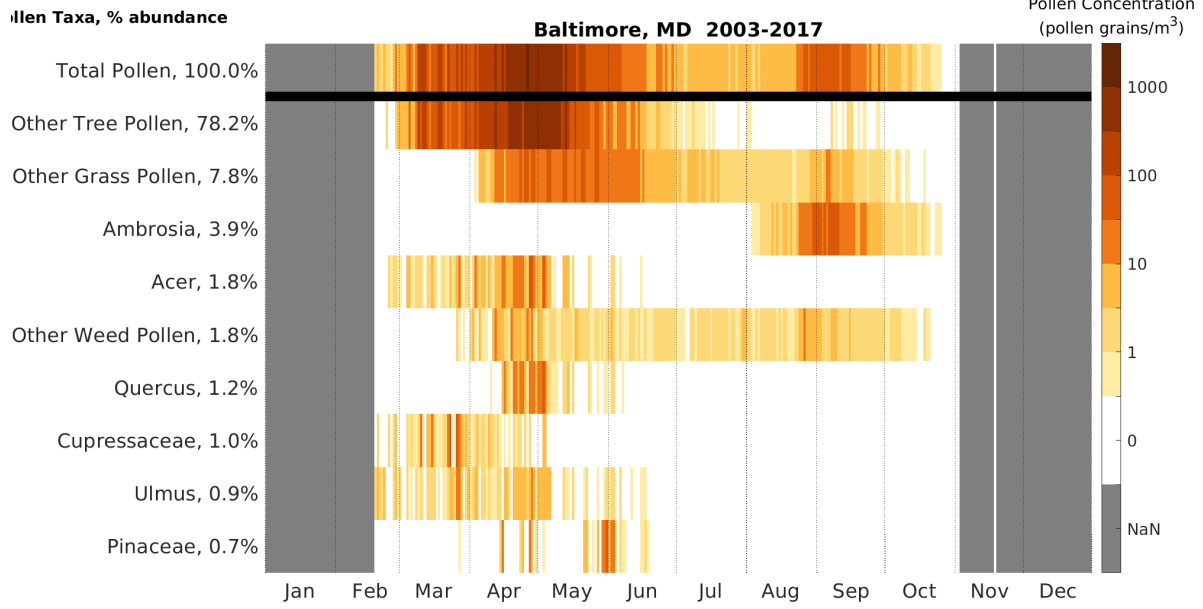
3 Pollen calendars for the station at the city and state or province listed in title of figure. Daily
4 mean climatology of pollen concentration by pollen taxa, 2003-2017. Percent abundance is based
5 on the sum of API over all pollen taxa. Only pollen taxa with average API over 150 grain-
6 day/m³ are shown. Missing data are shaded grey and denoted NaN in the colorbar.



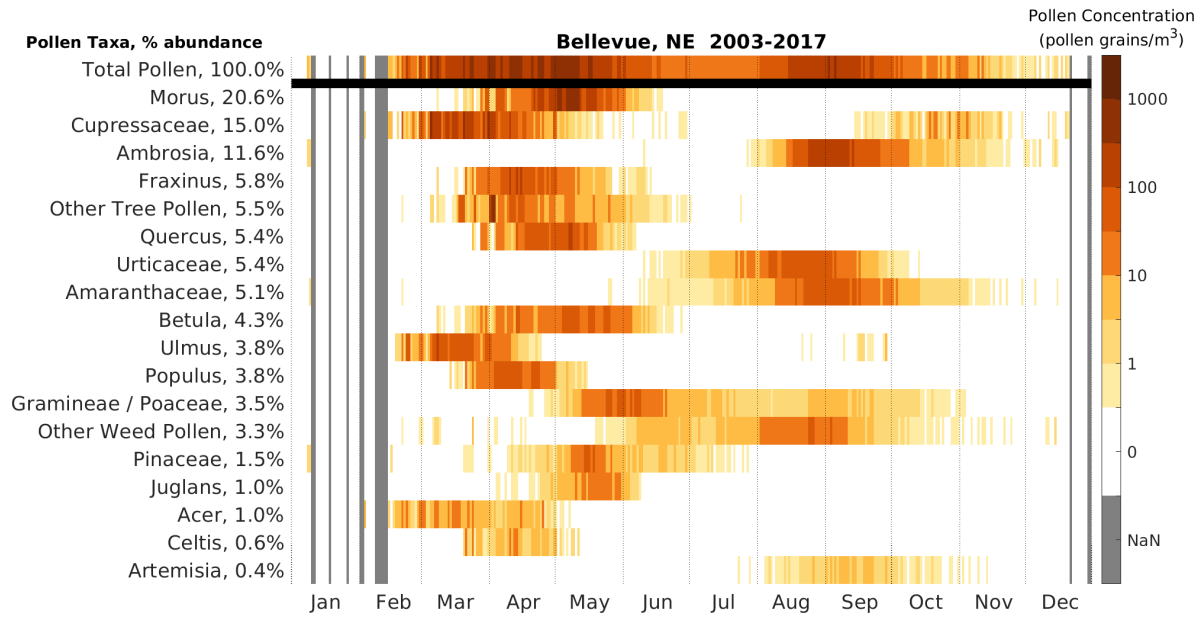
7



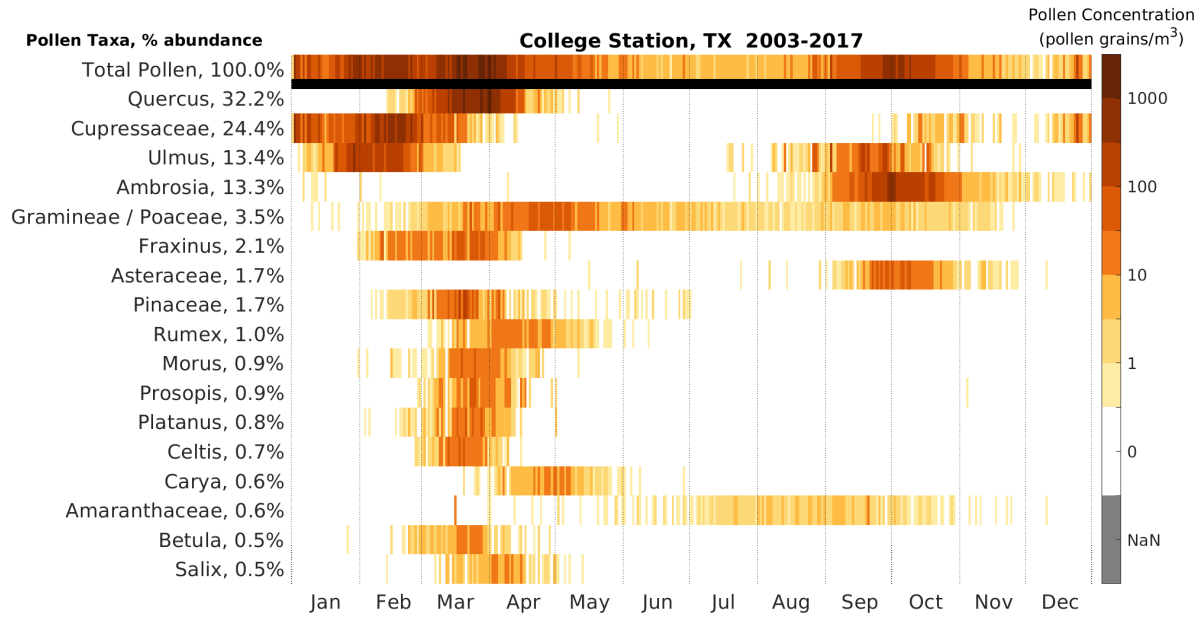
8



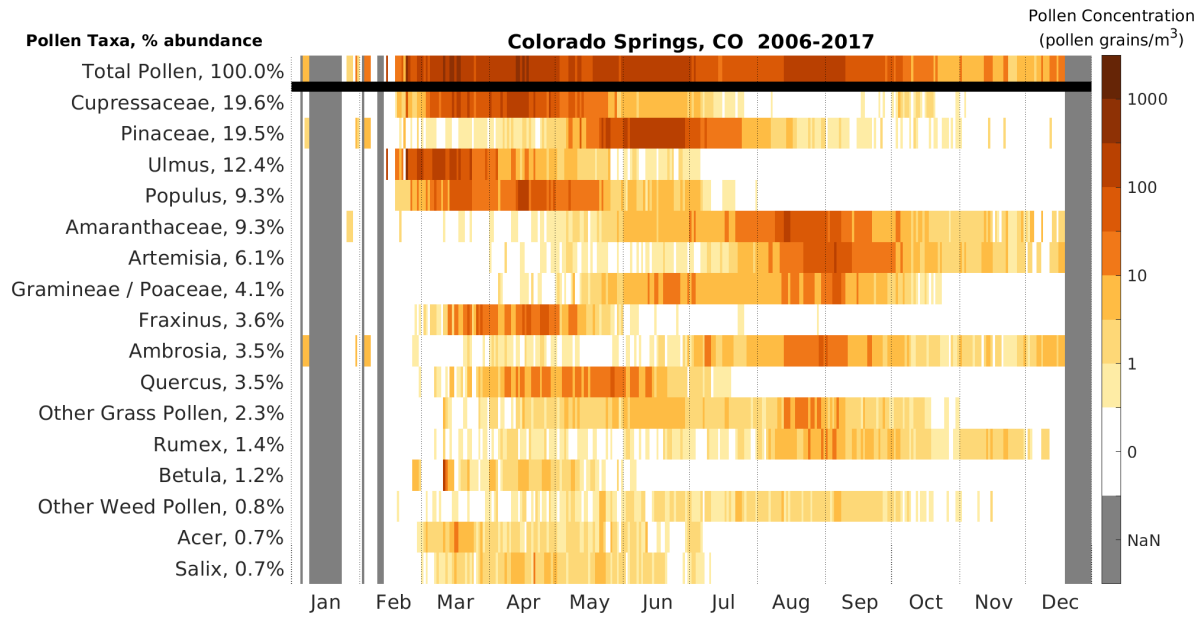
9



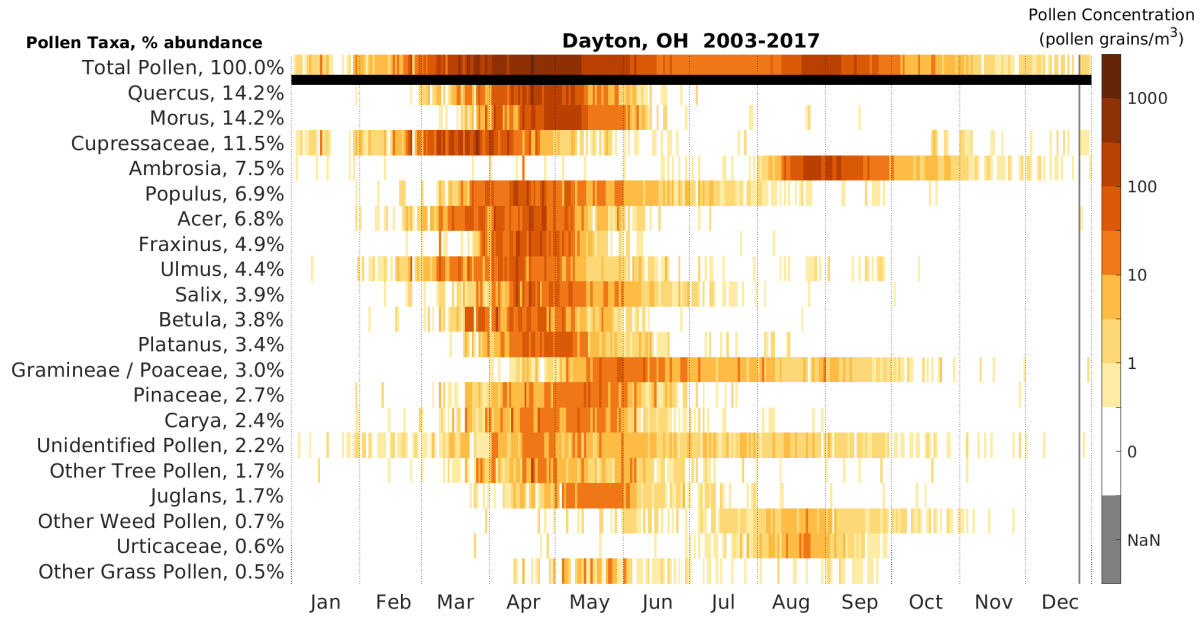
10



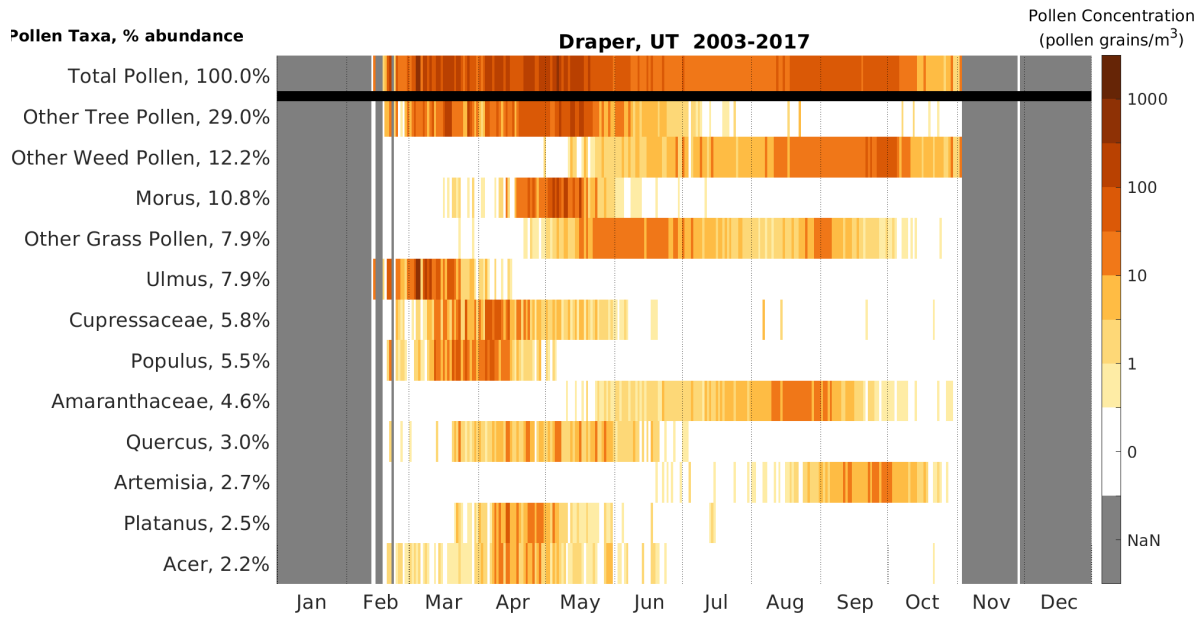
11



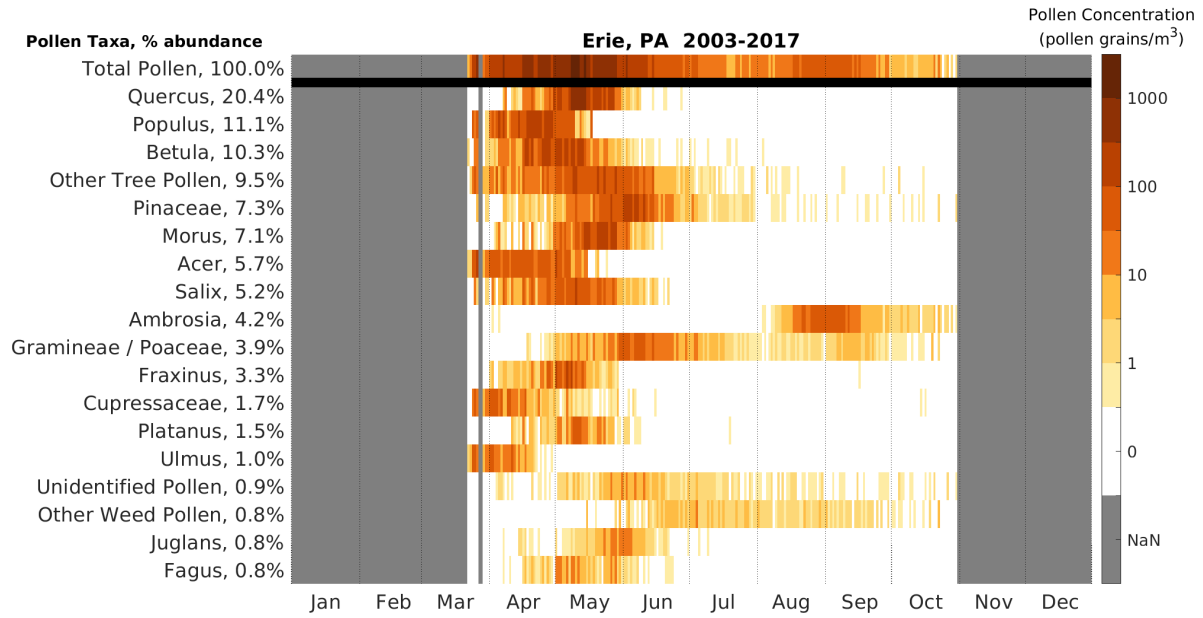
12



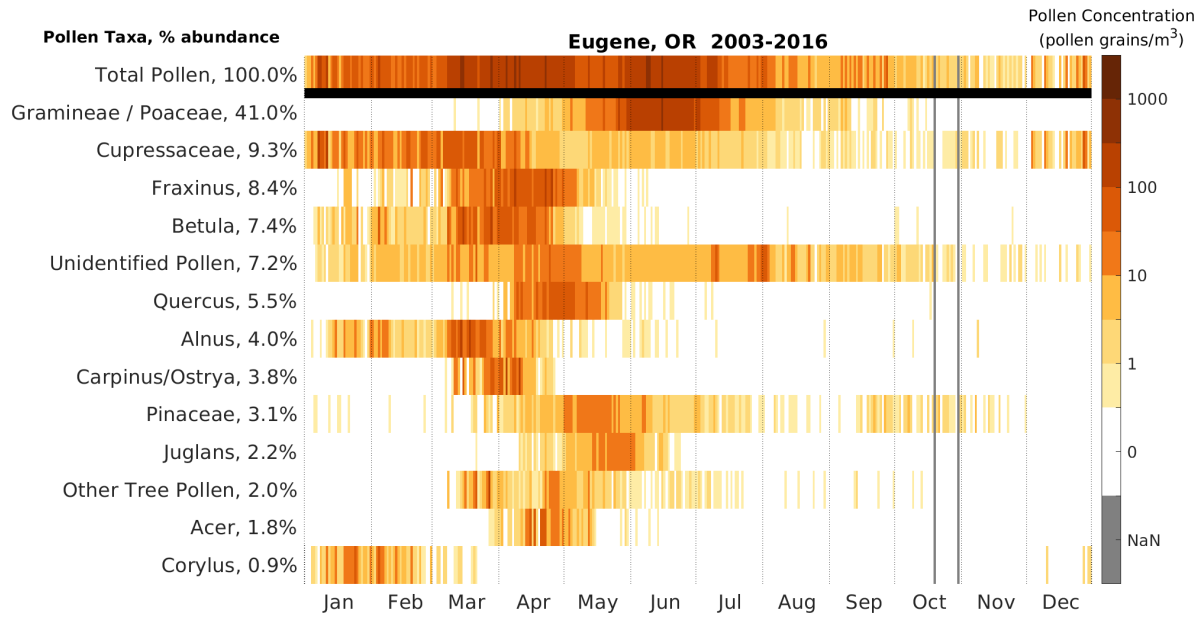
13



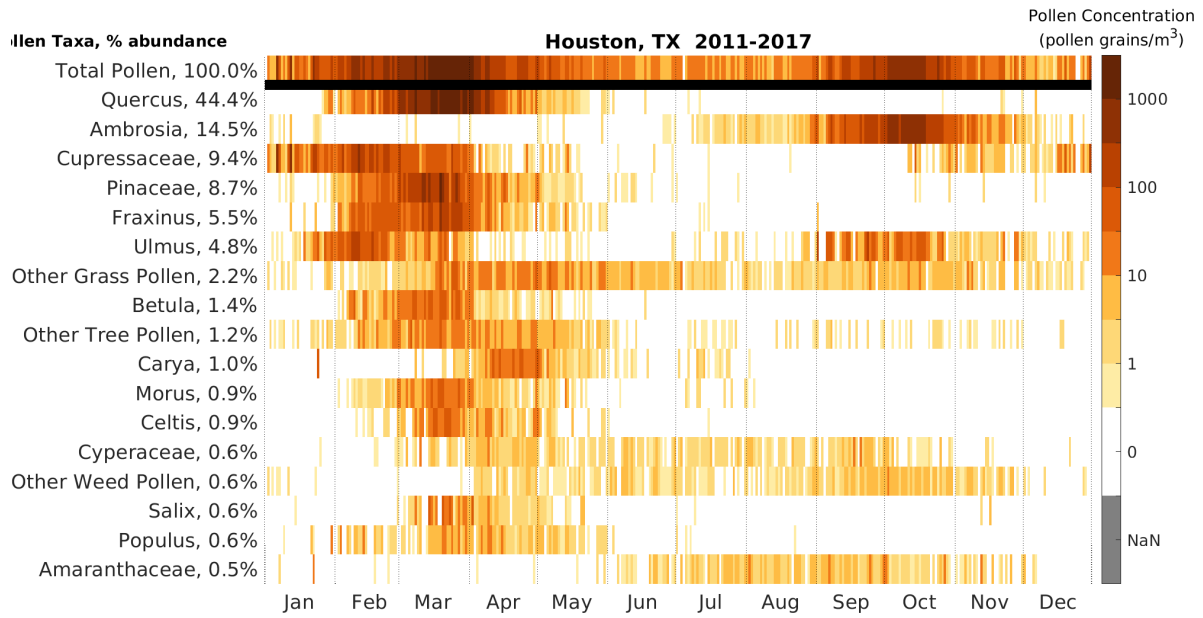
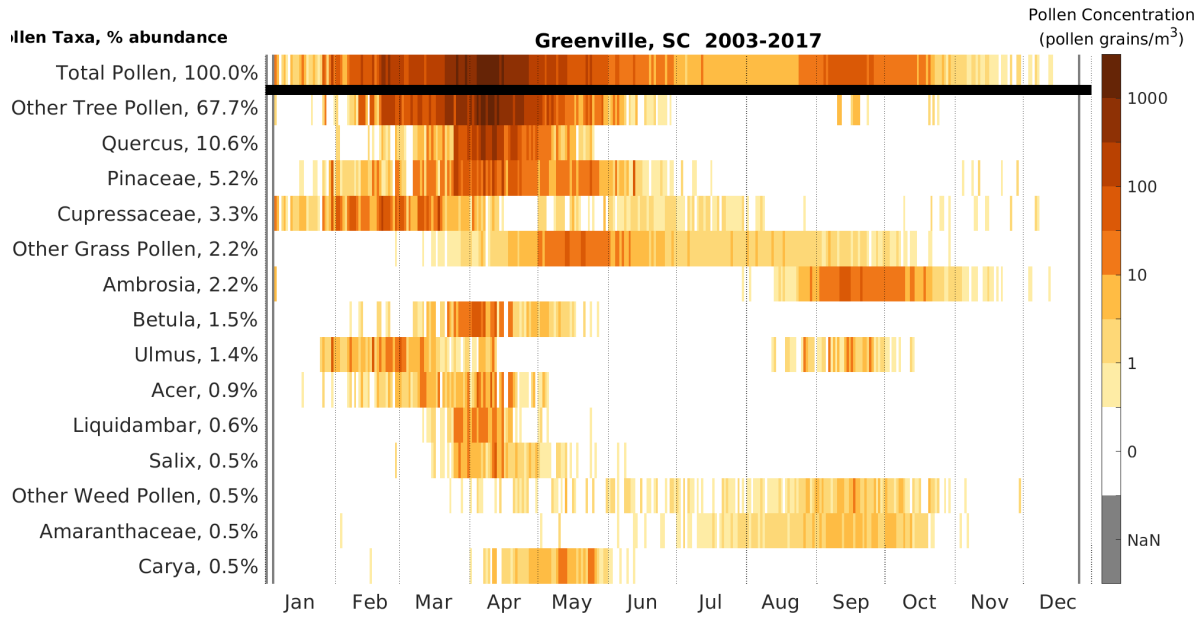
14

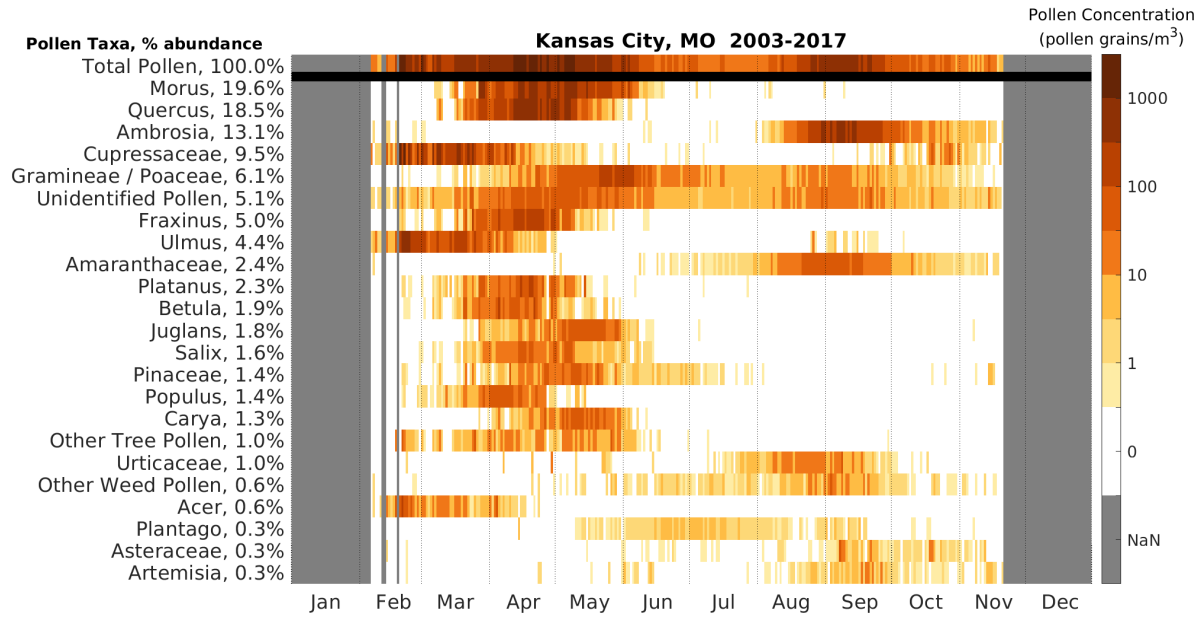


15

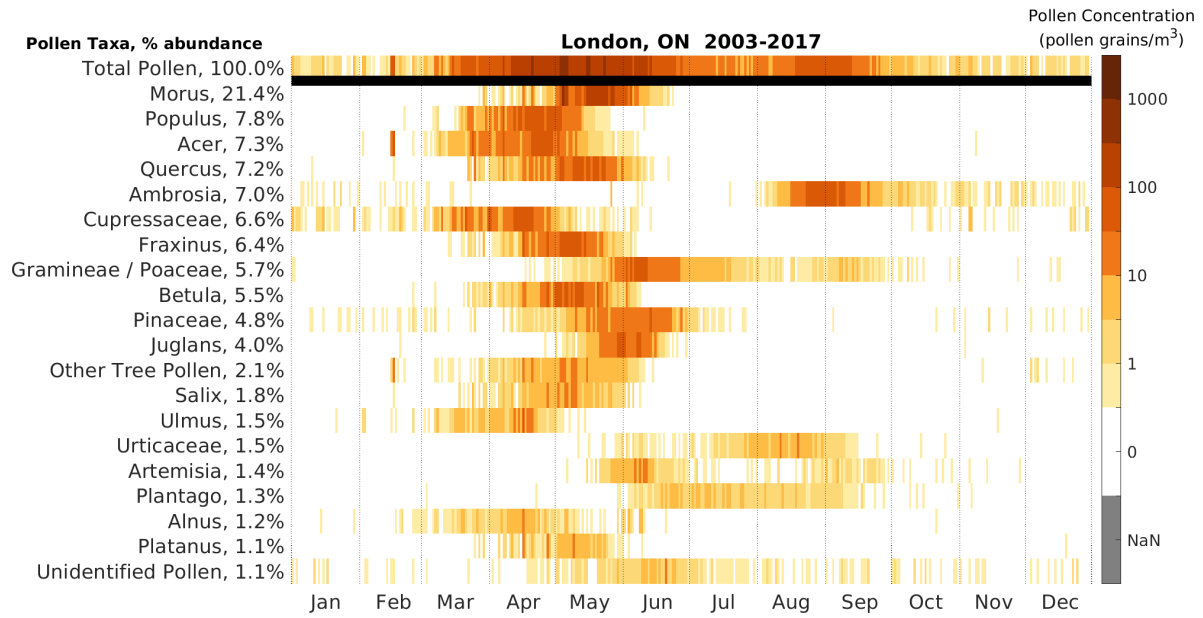


16

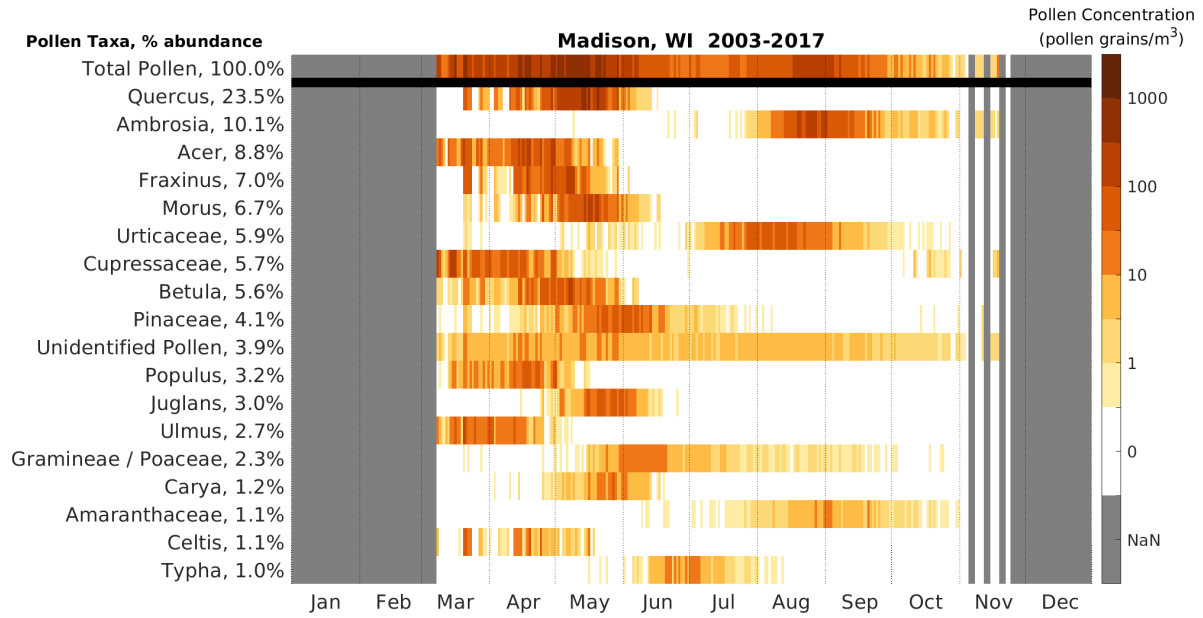




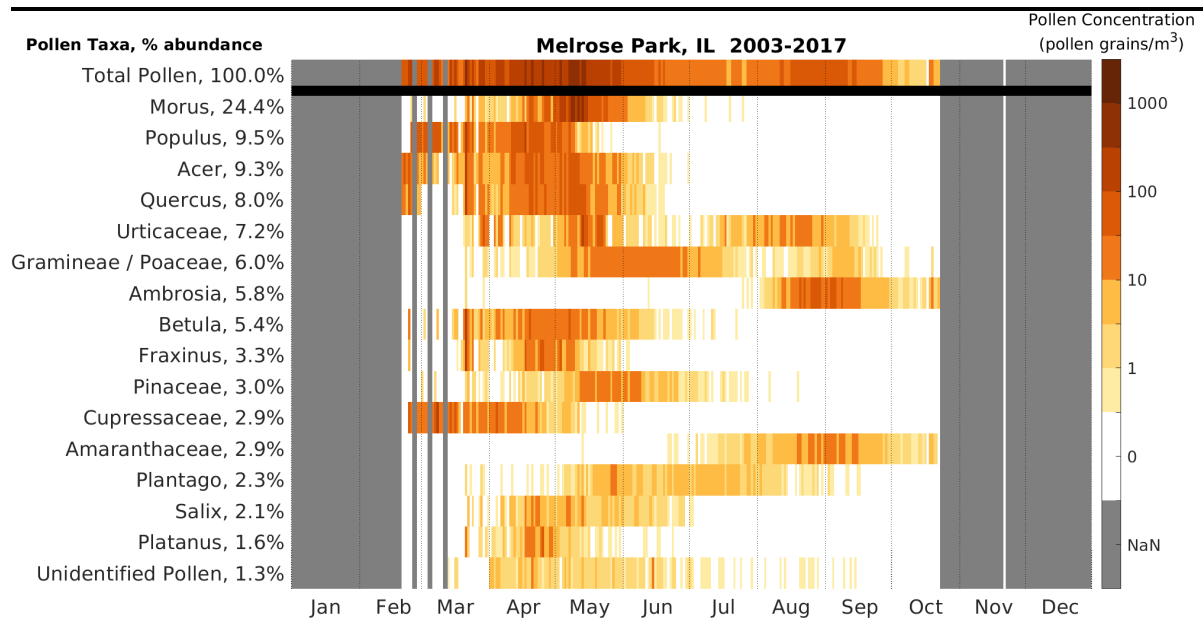
19



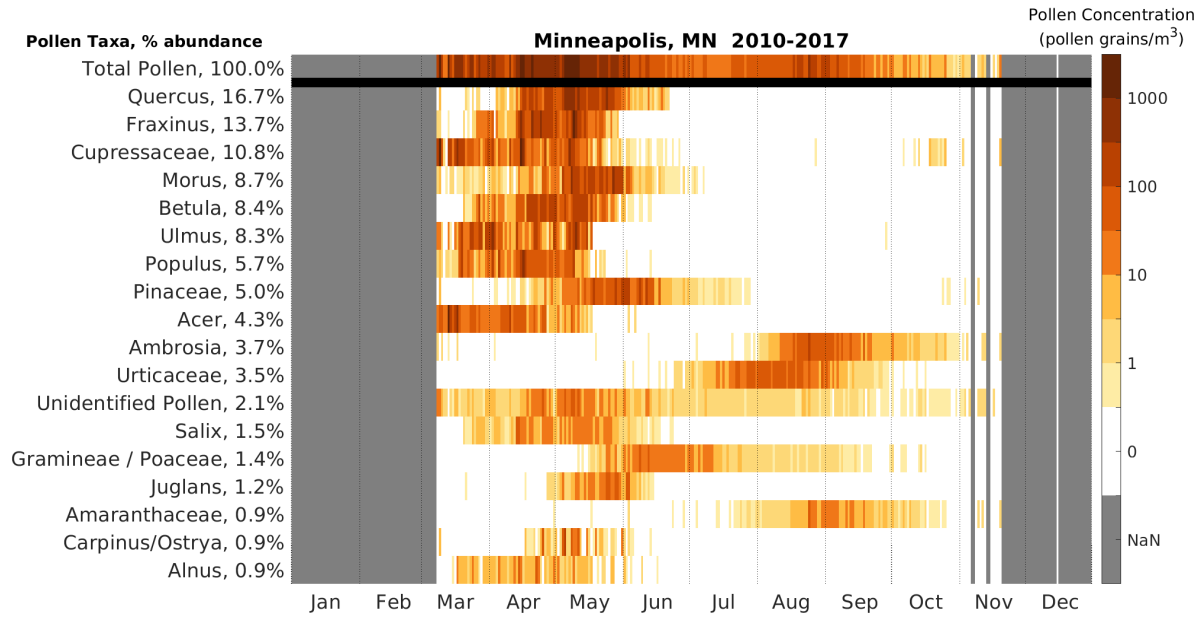
20



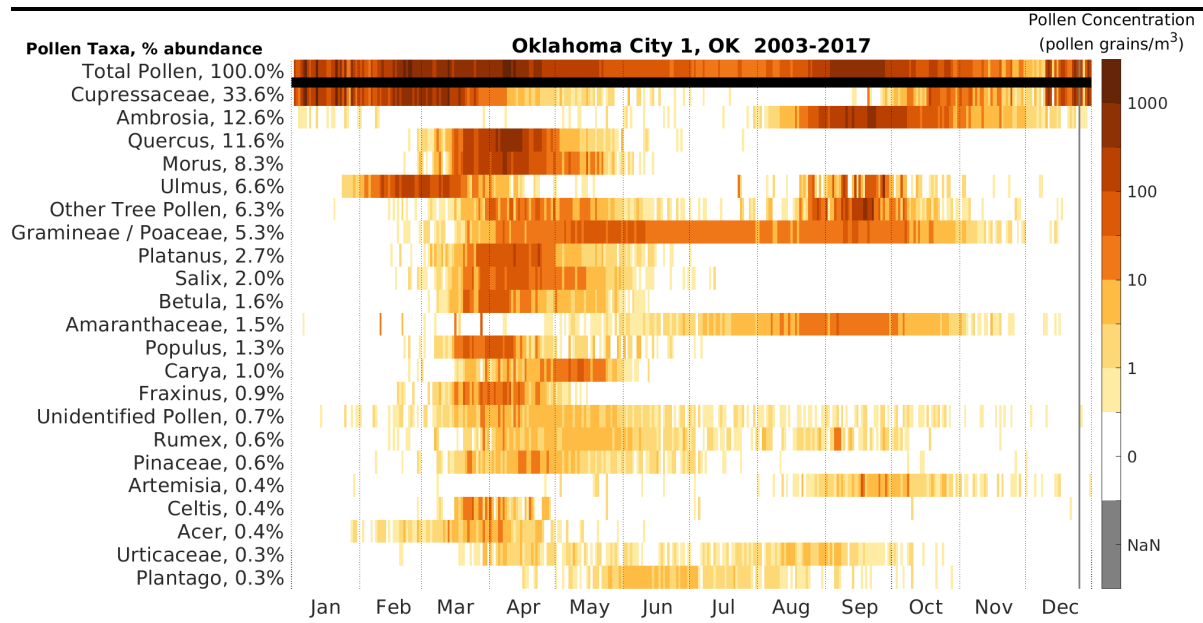
21



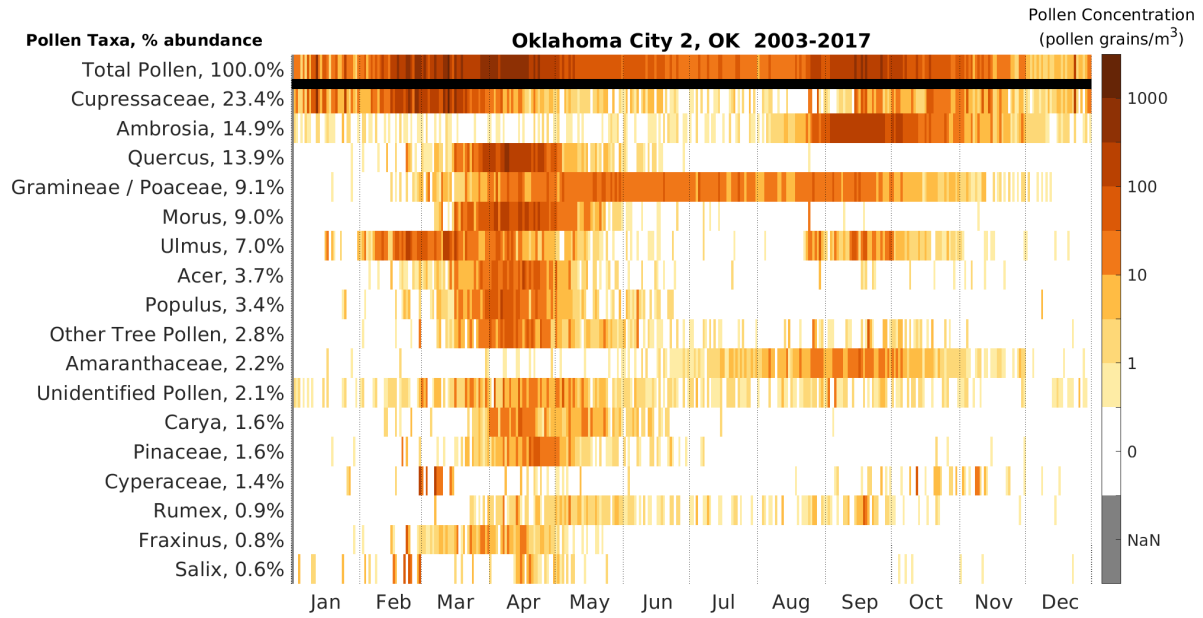
22



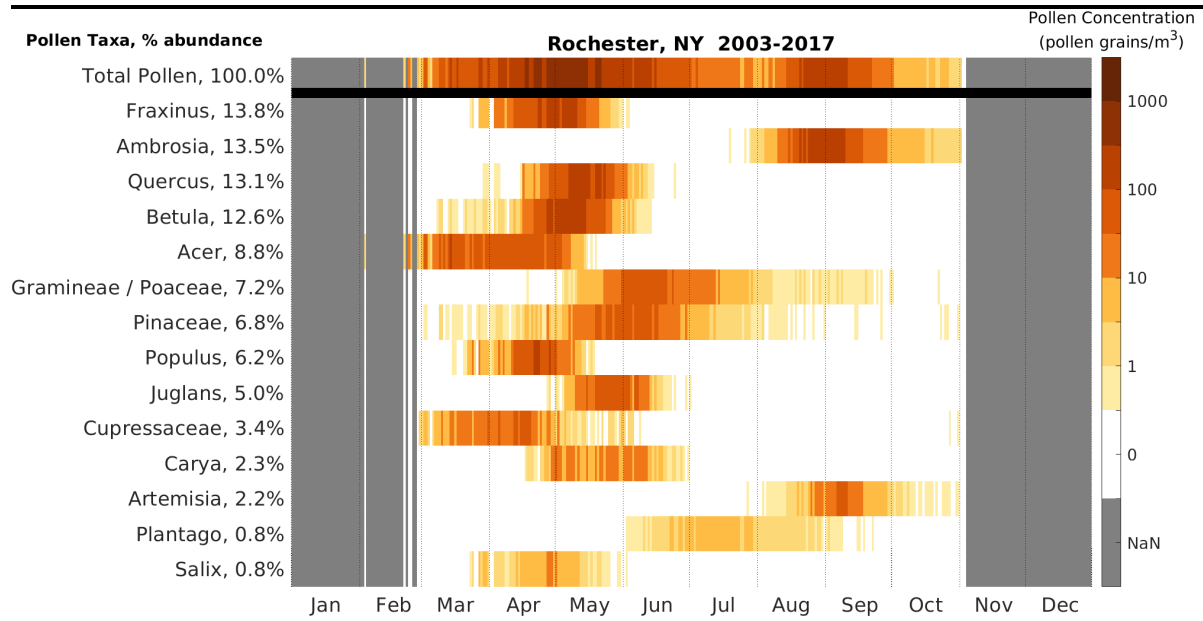
23



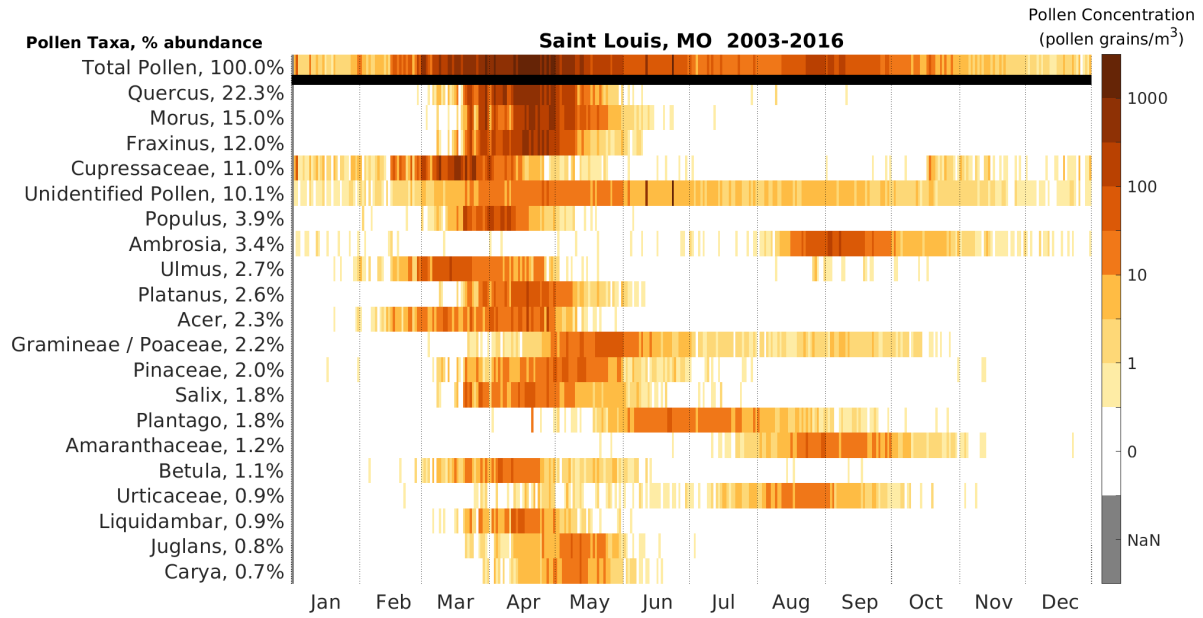
24



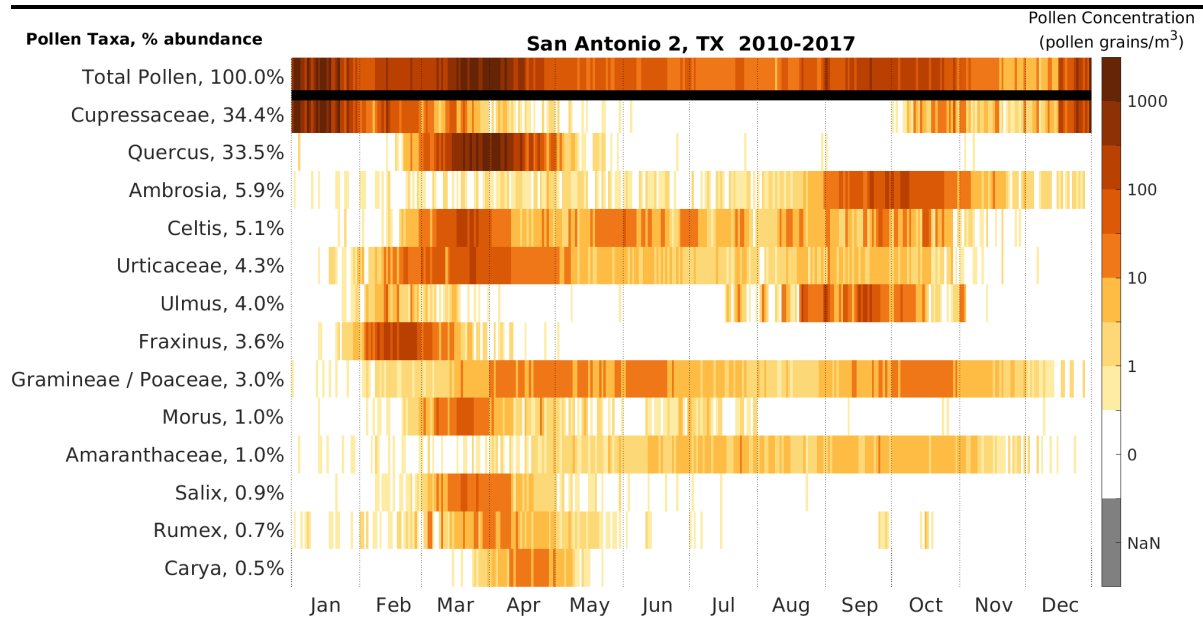
25



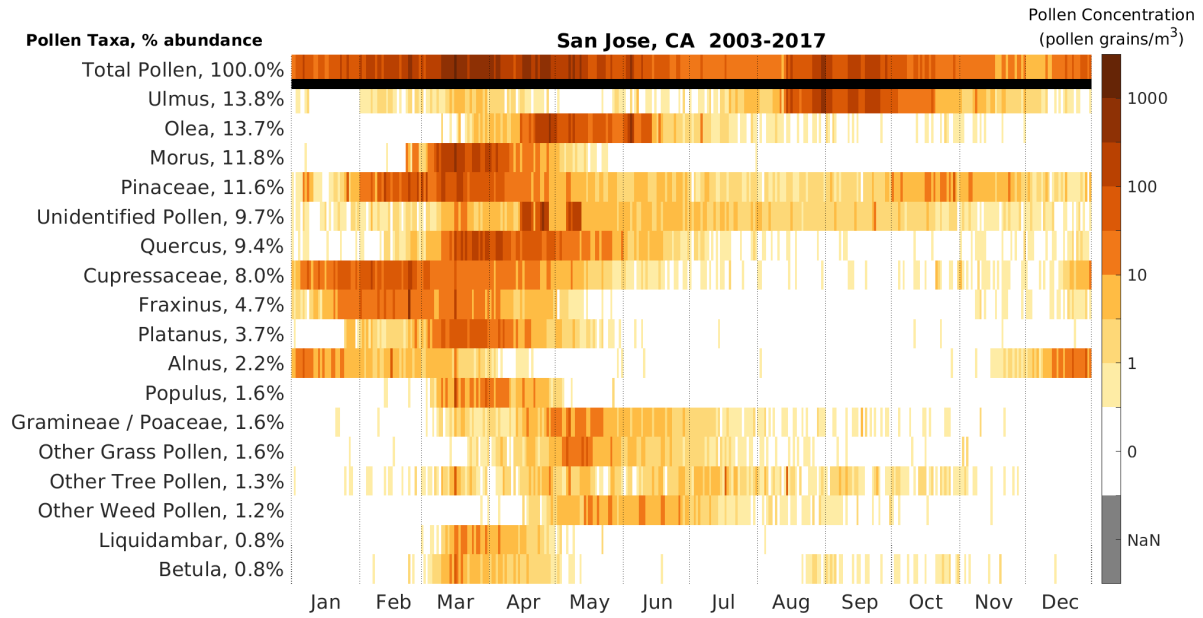
26



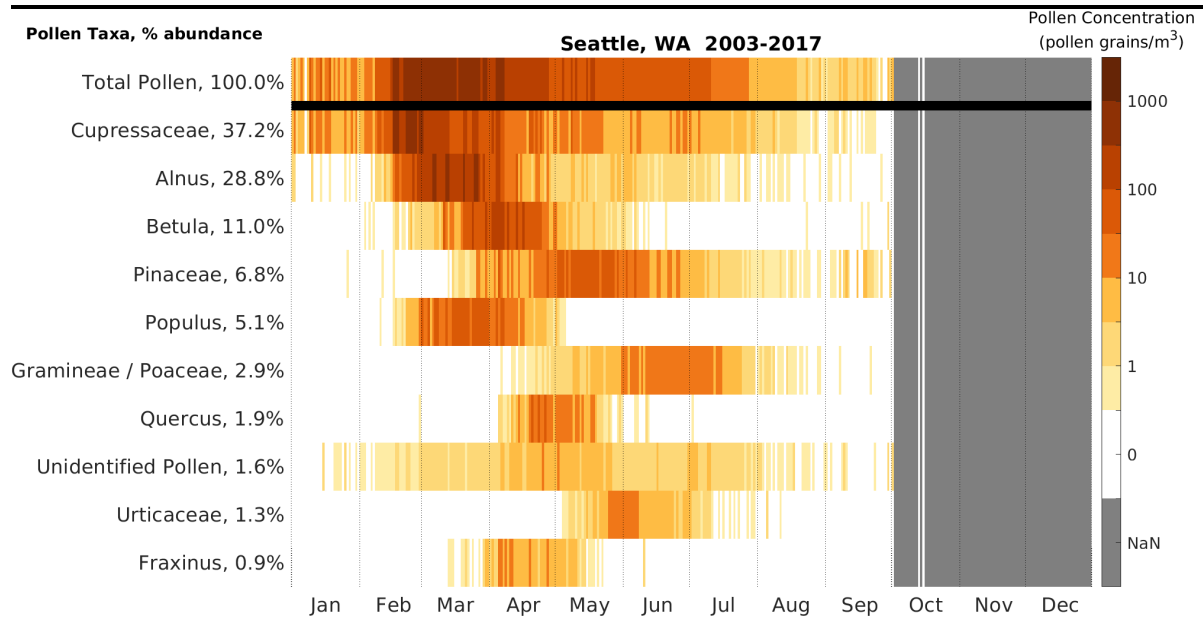
27



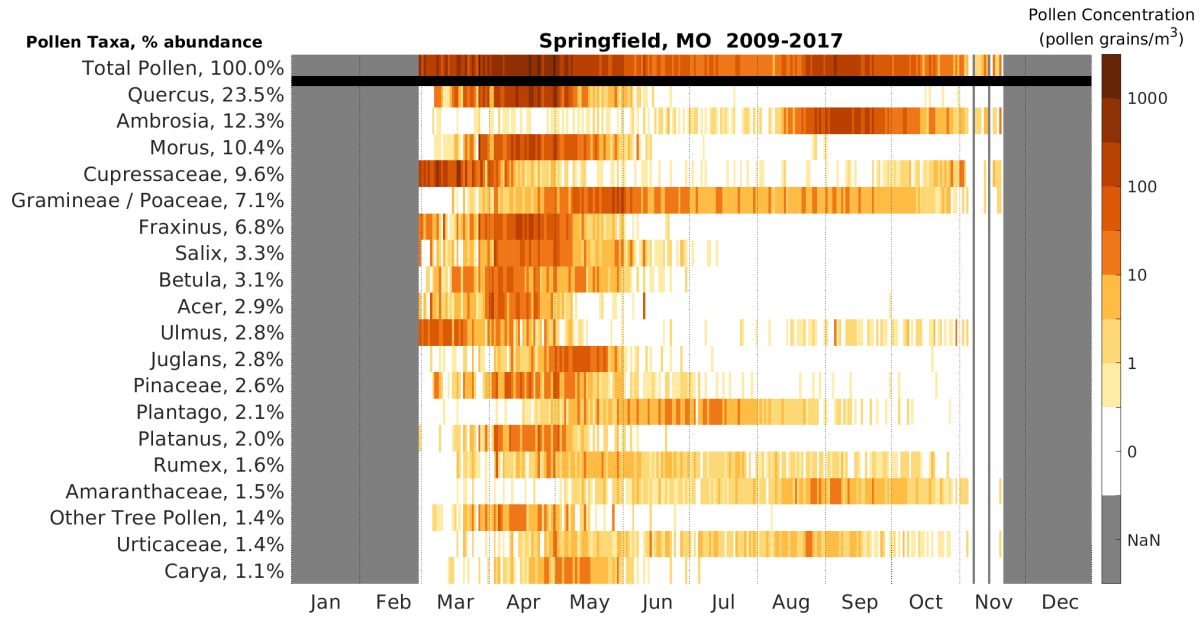
28



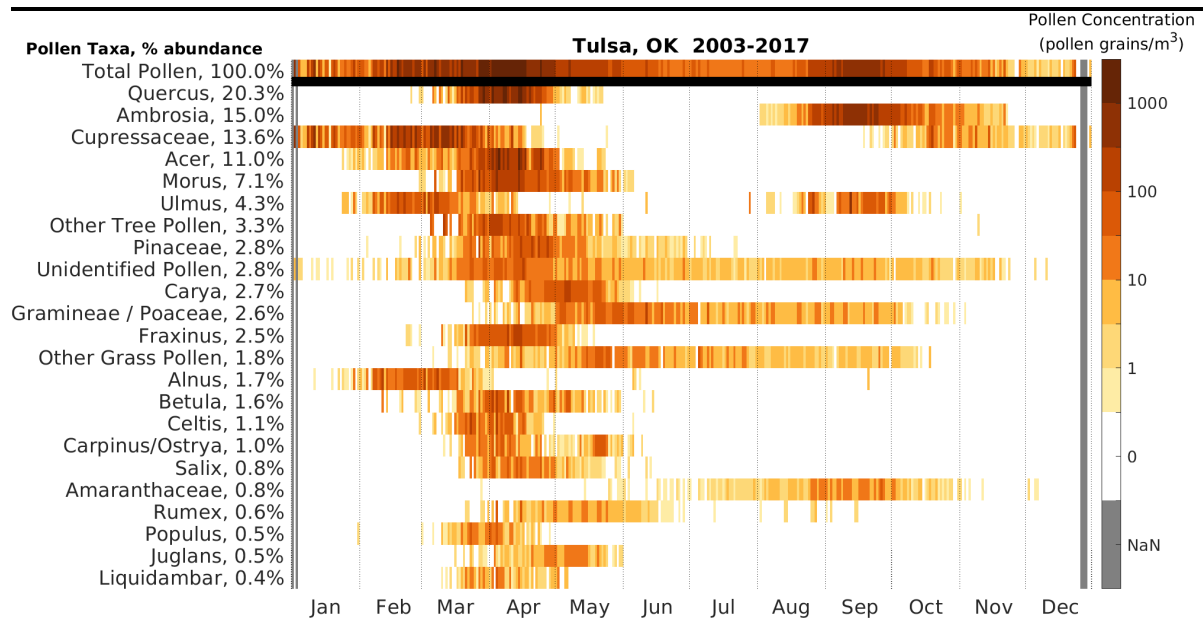
29



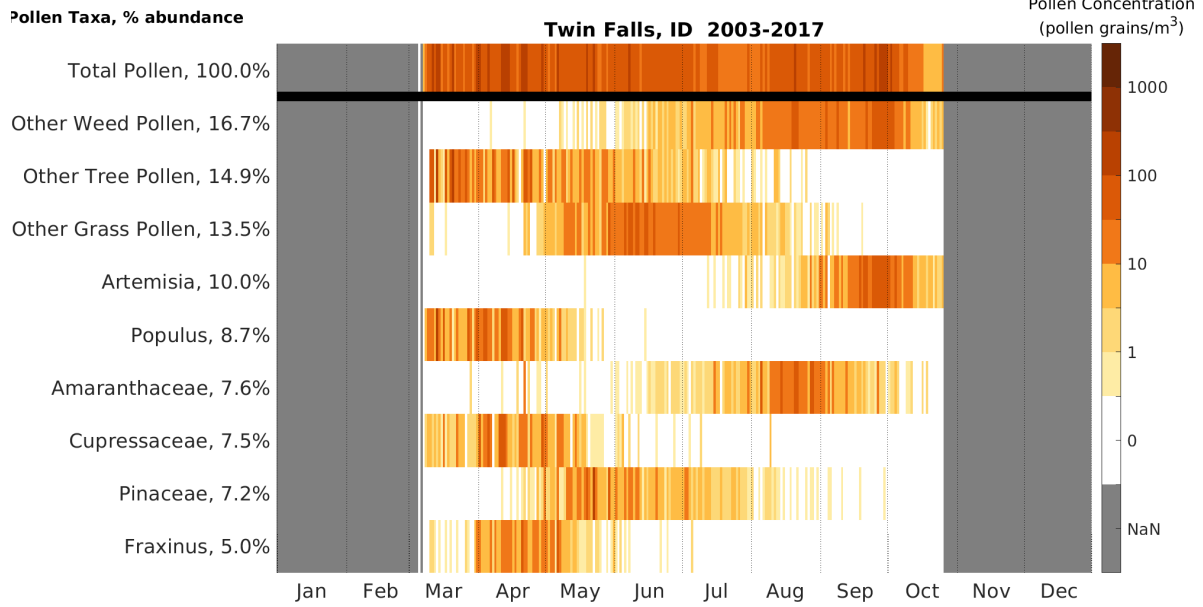
30



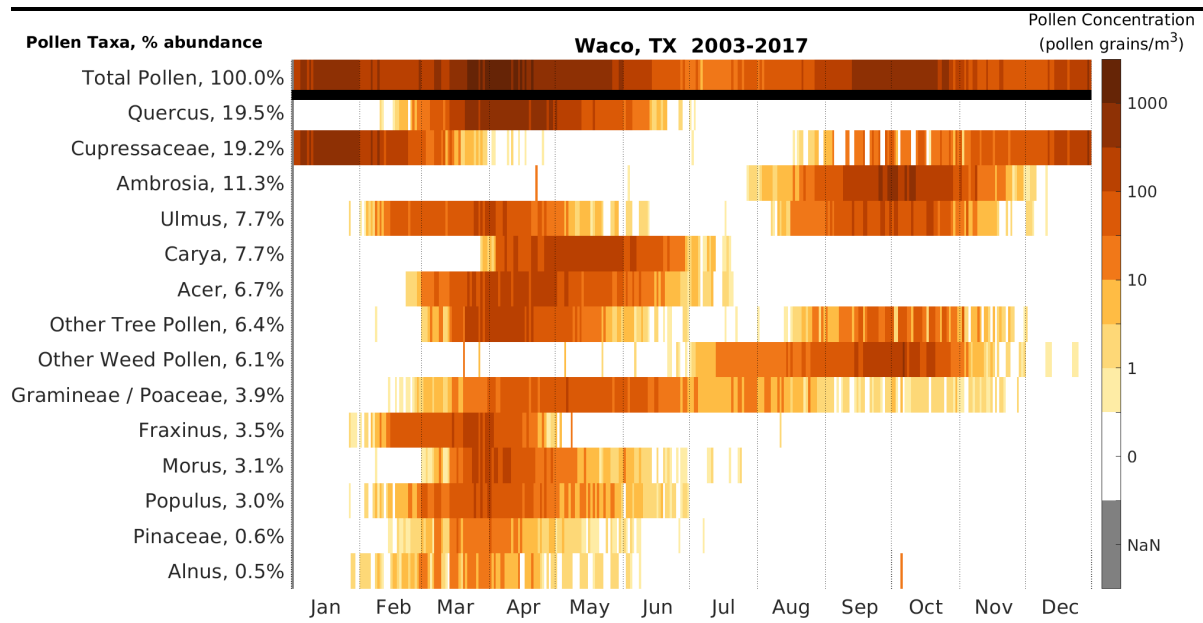
31



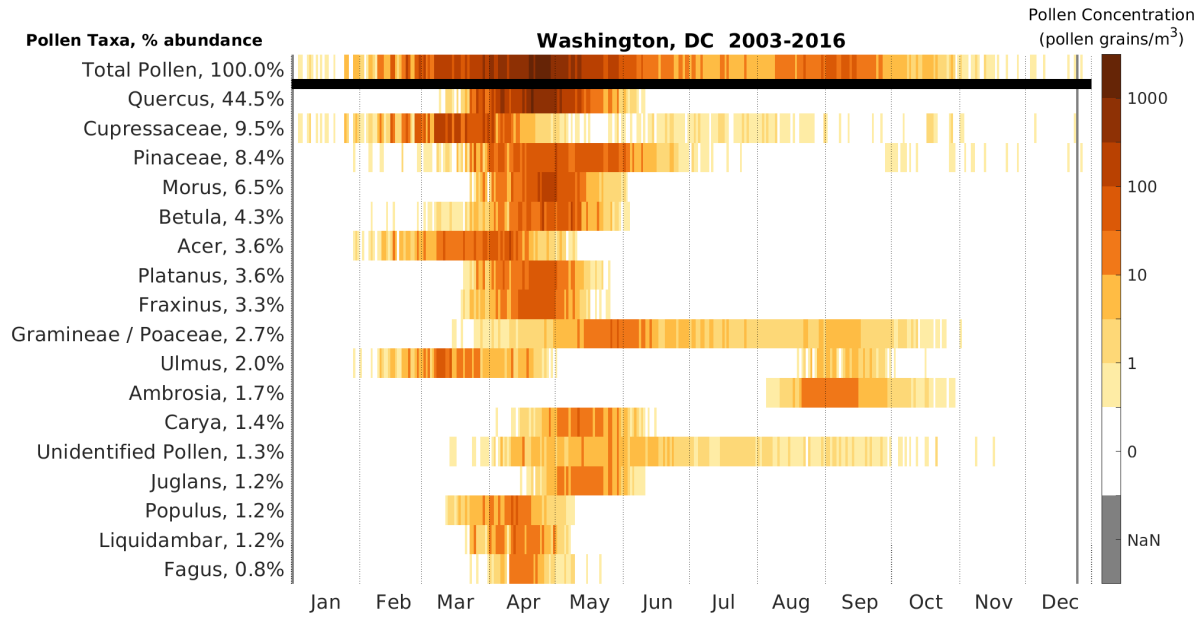
32



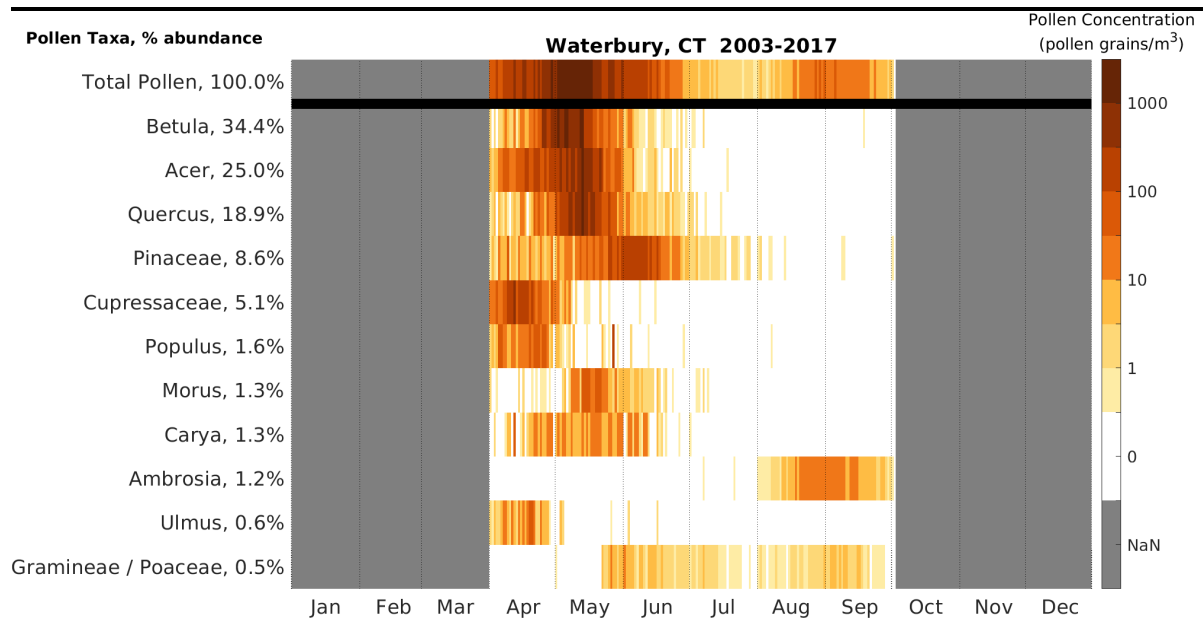
33



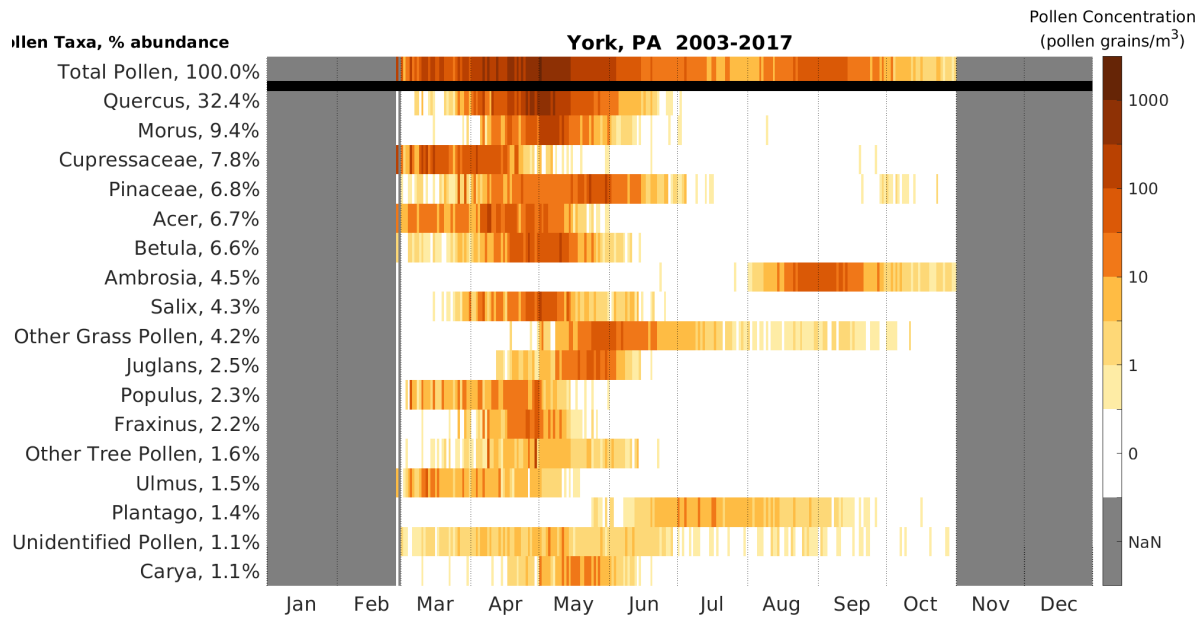
34



35



36



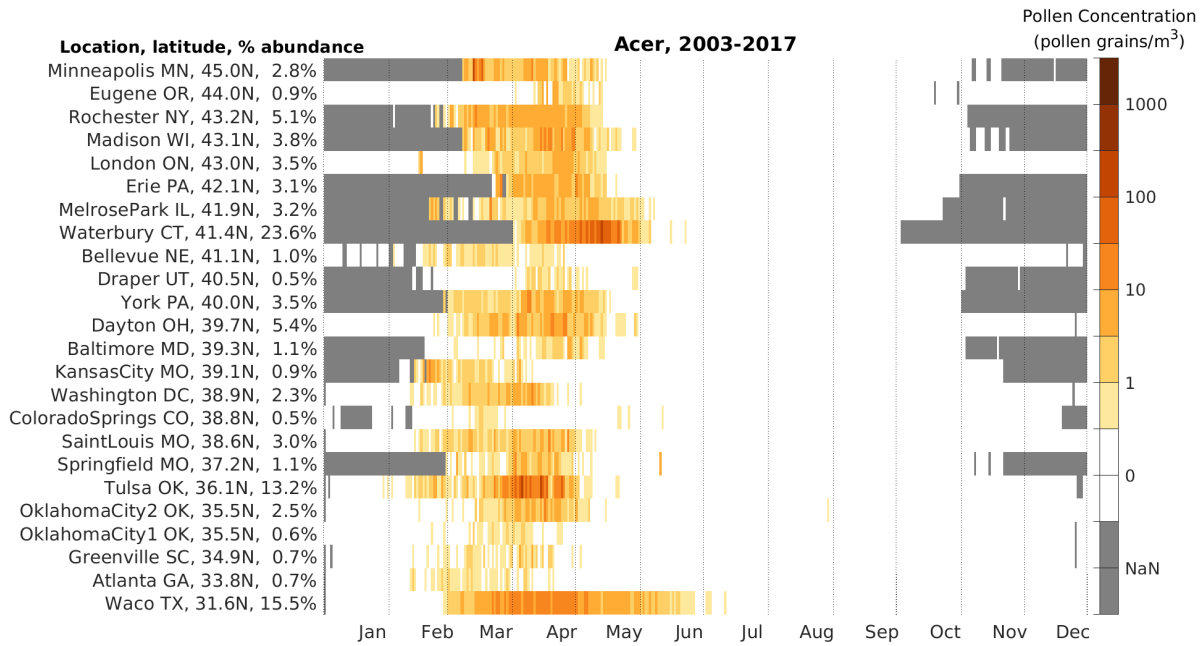
37

38

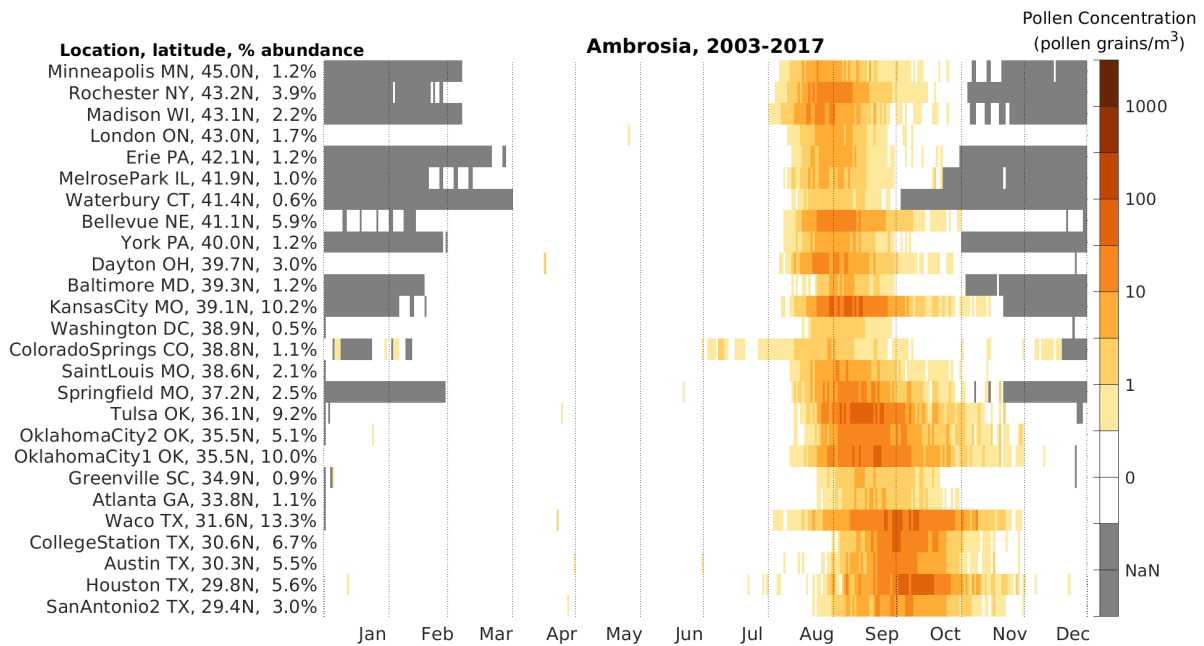
39
 40
 41
 42
 43
 44
 45
 46
 47

Taxon-specific pollen calendars

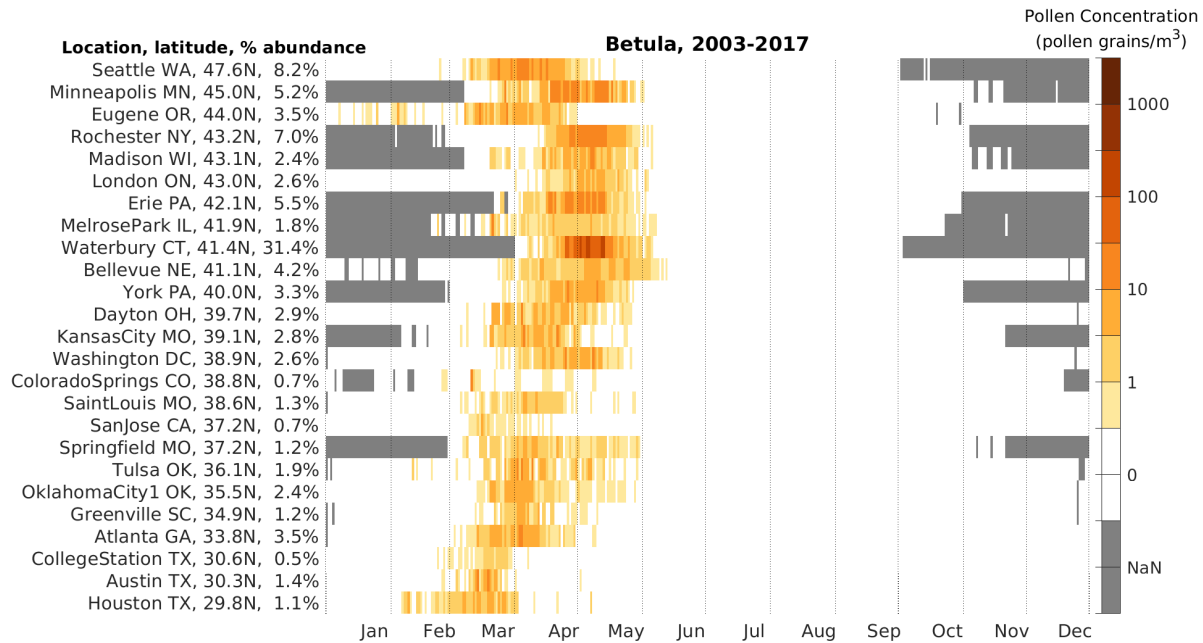
Pollen calendars for pollen taxon listed in title. Daily mean climatology of pollen concentration, 2003-2017. NAB stations are ordered by latitude. Missing data are shaded grey and denoted NaN in the colorbar.



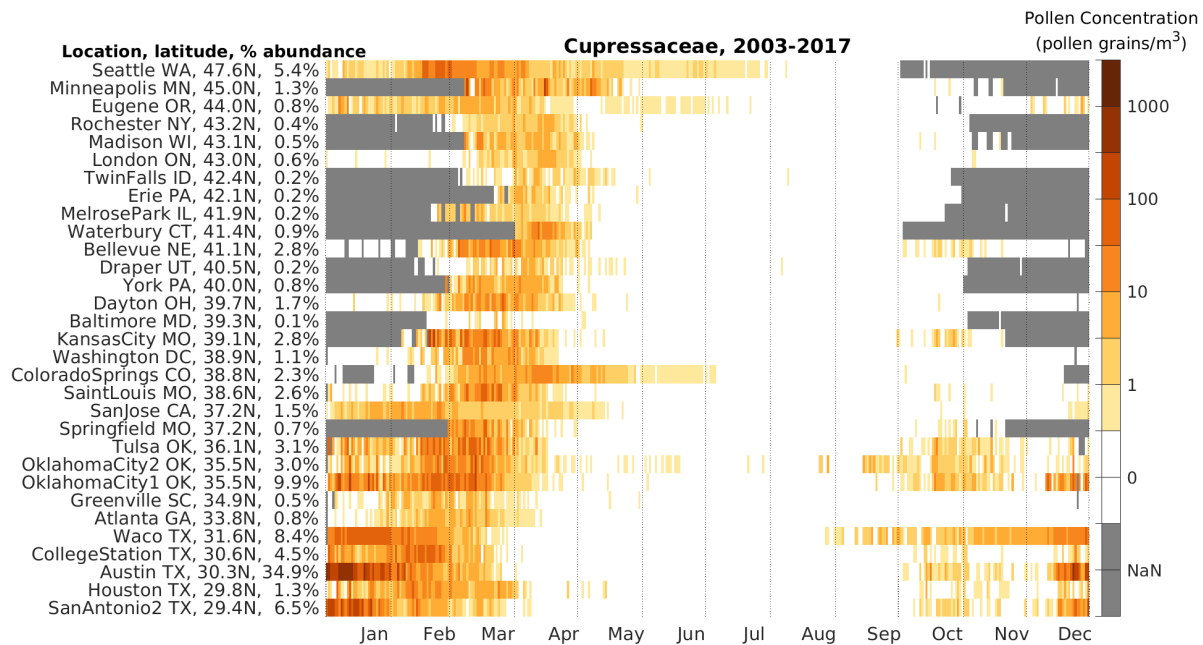
48



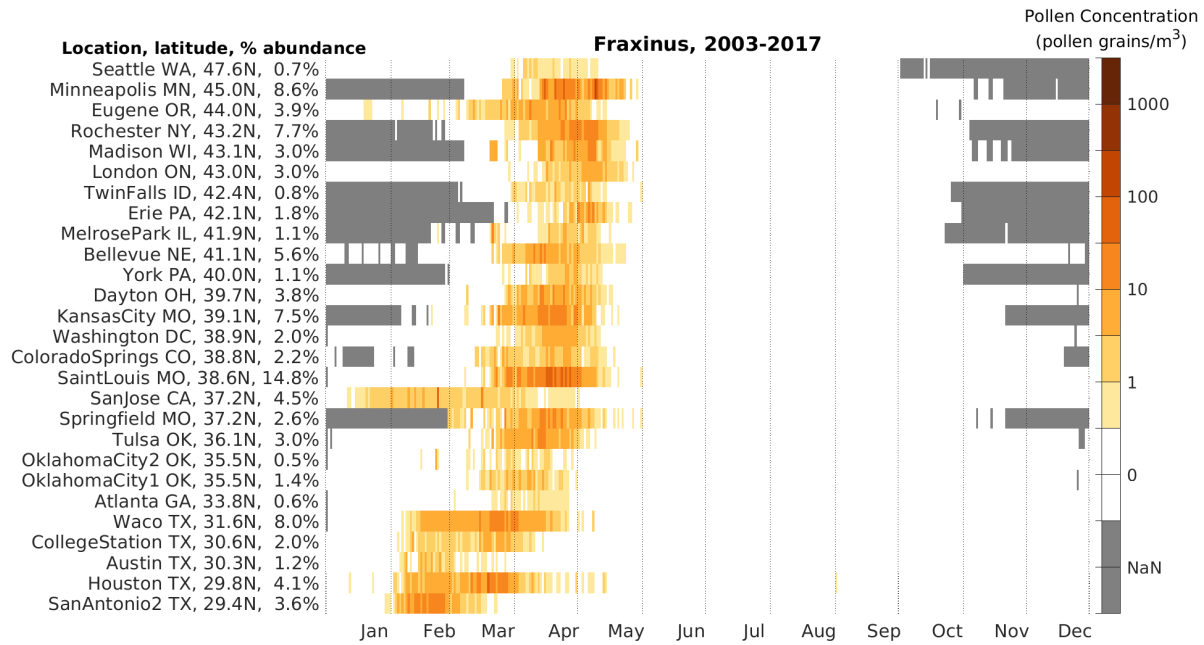
49



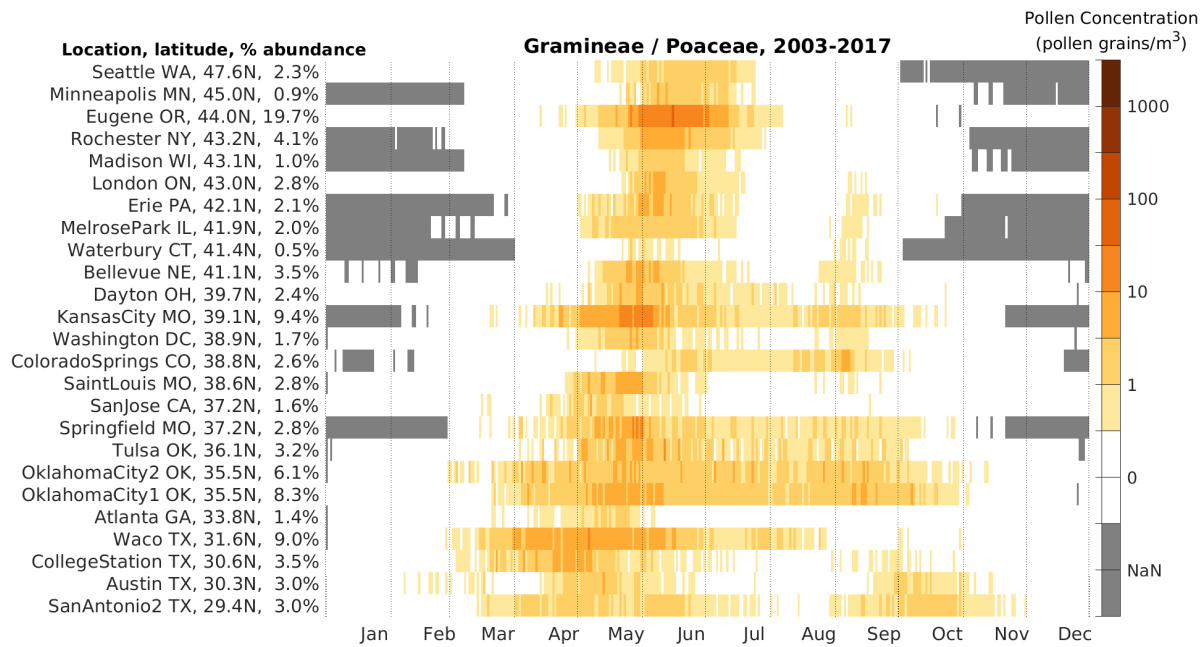
50



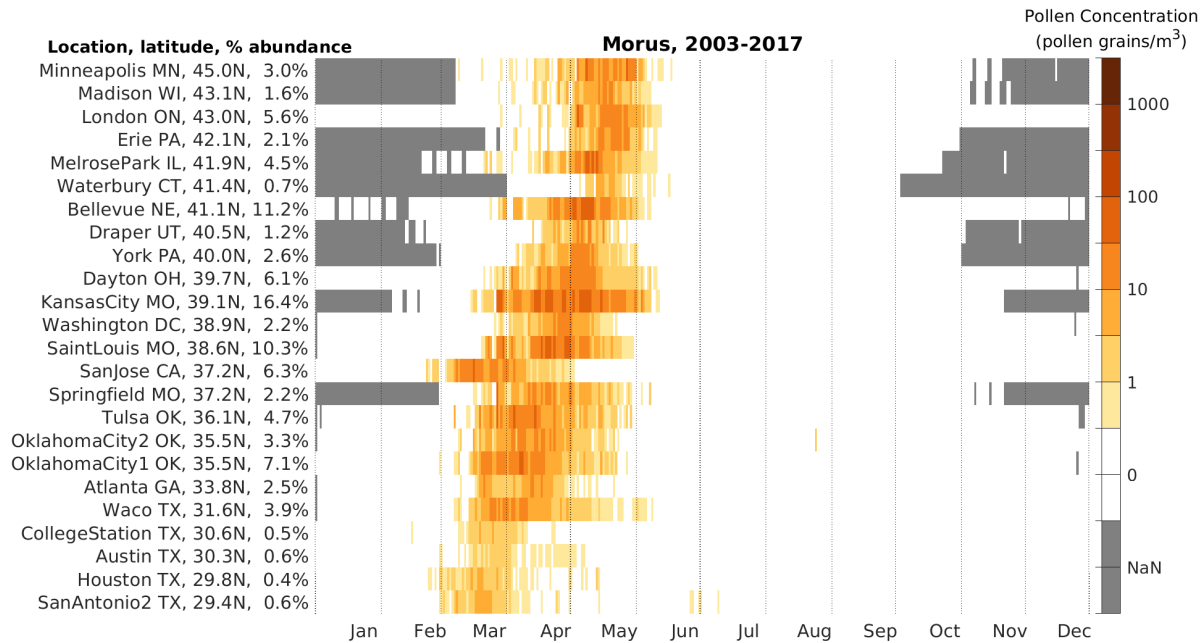
51



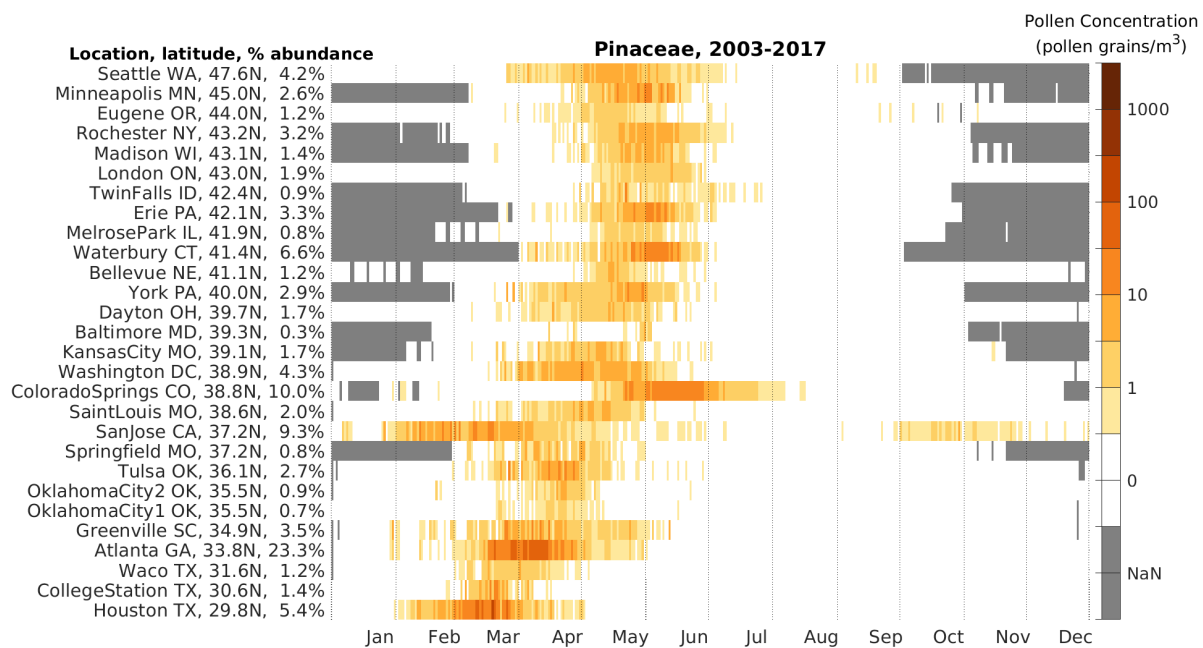
52



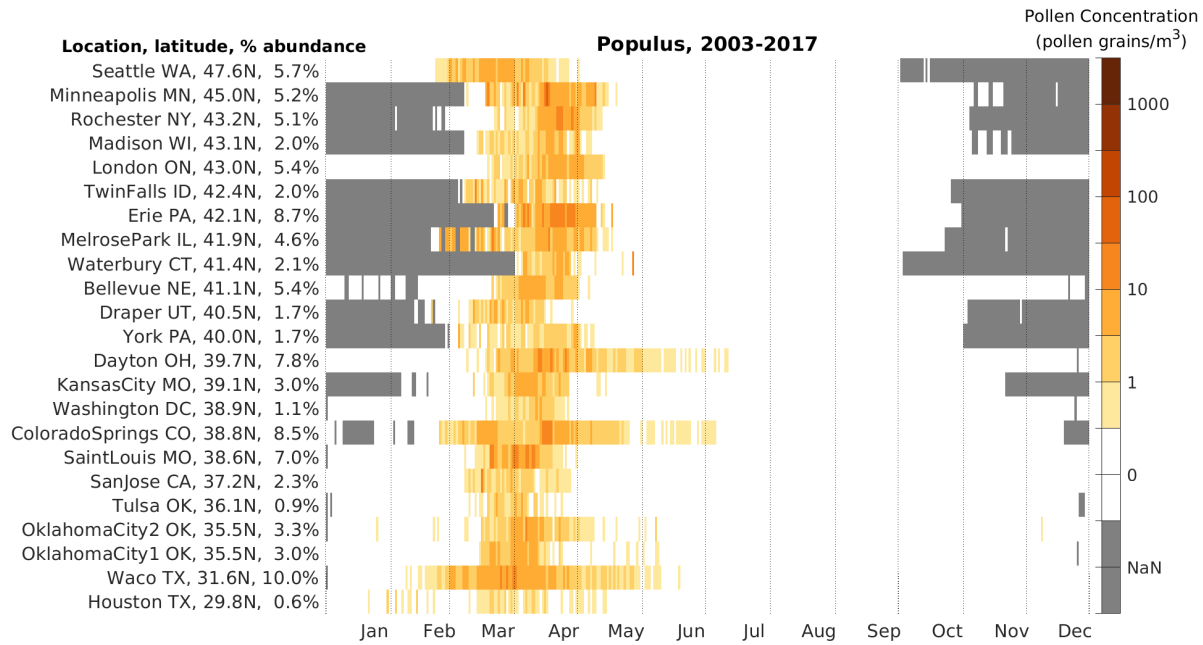
53



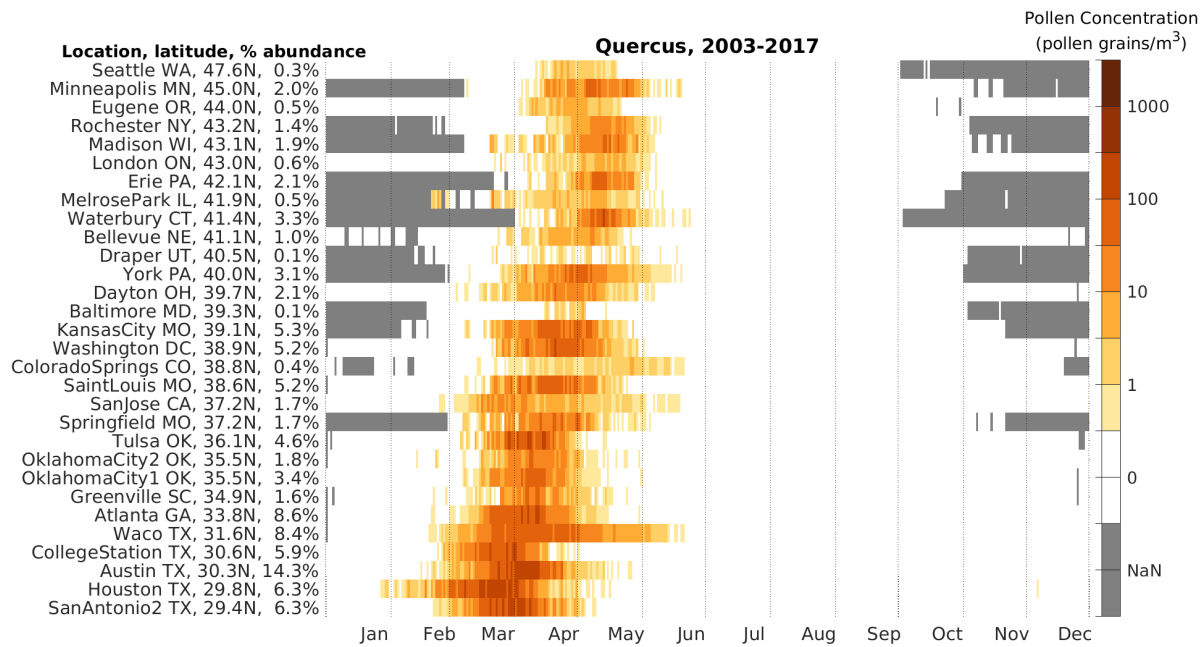
54



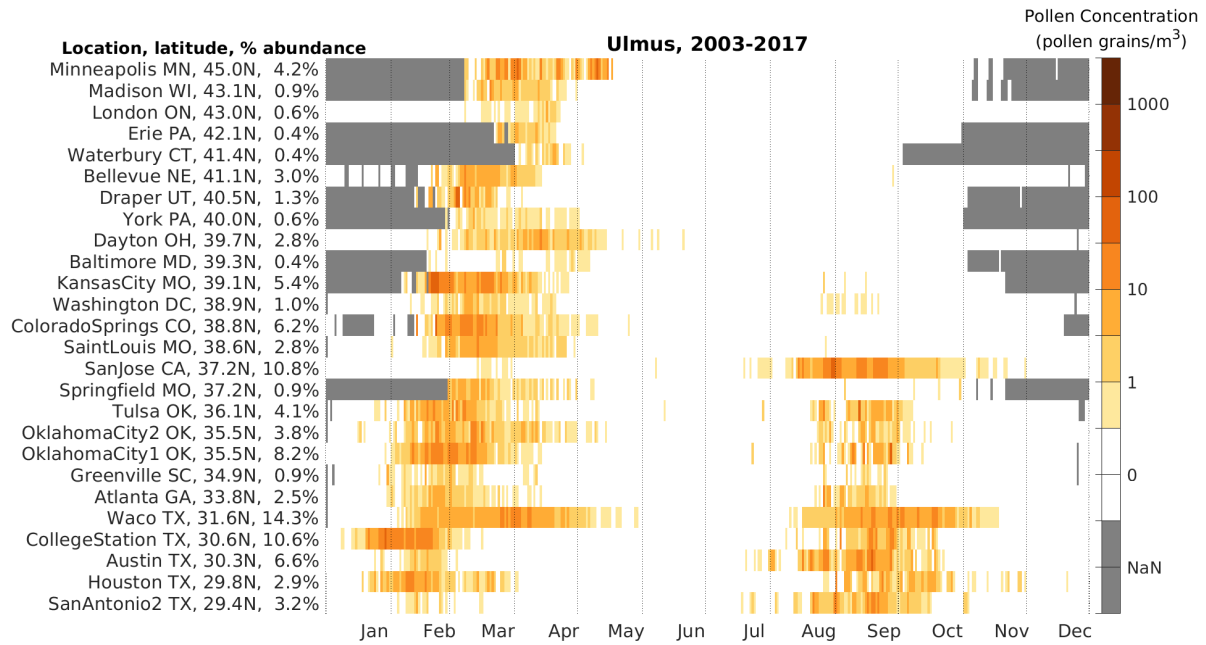
55



56



57

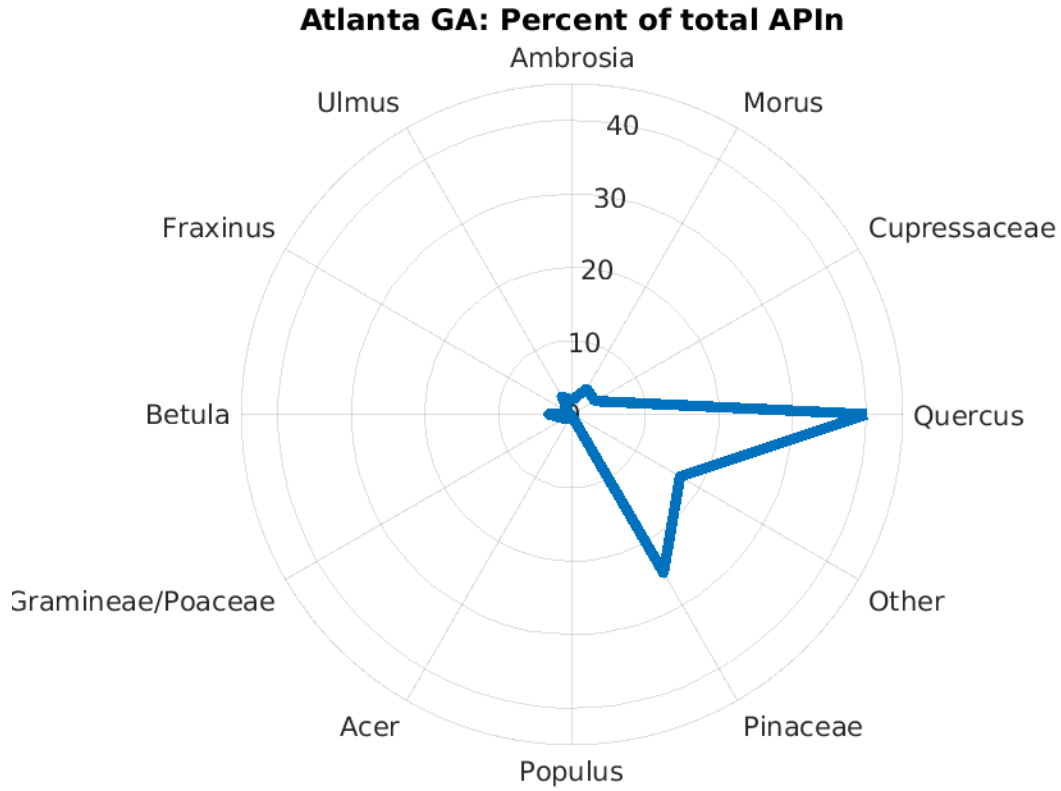


- 58
- 59
- 60
- 61
- 62
- 63
- 64
- 65
- 66
- 67
- 68
- 69
- 70
- 71
- 72
- 73
- 74
- 75
- 76
- 77
- 78
- 79
- 80
- 81
- 82
- 83
- 84

85 **Radar Charts**

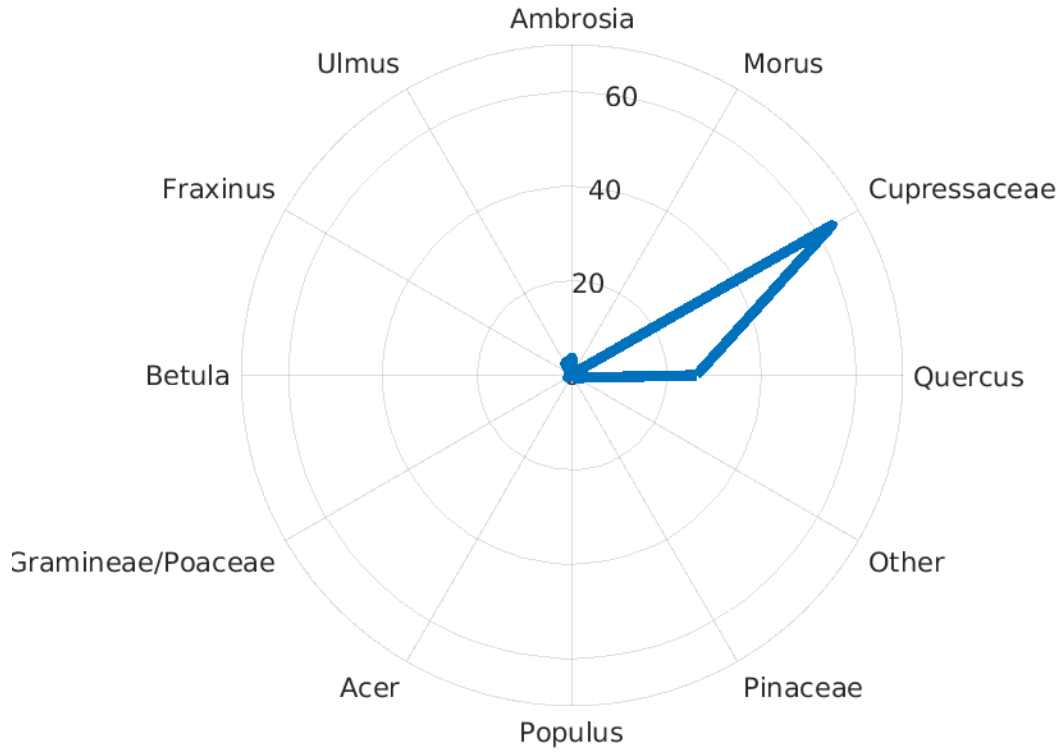
86

87 Radar charts for the station at the city and state or province listed in title of figure. Percent total
88 API for the station for the 11 allergenic pollen taxa and the combined category of "Other" which
89 is sum of all the other sampled allergenic pollen taxa.



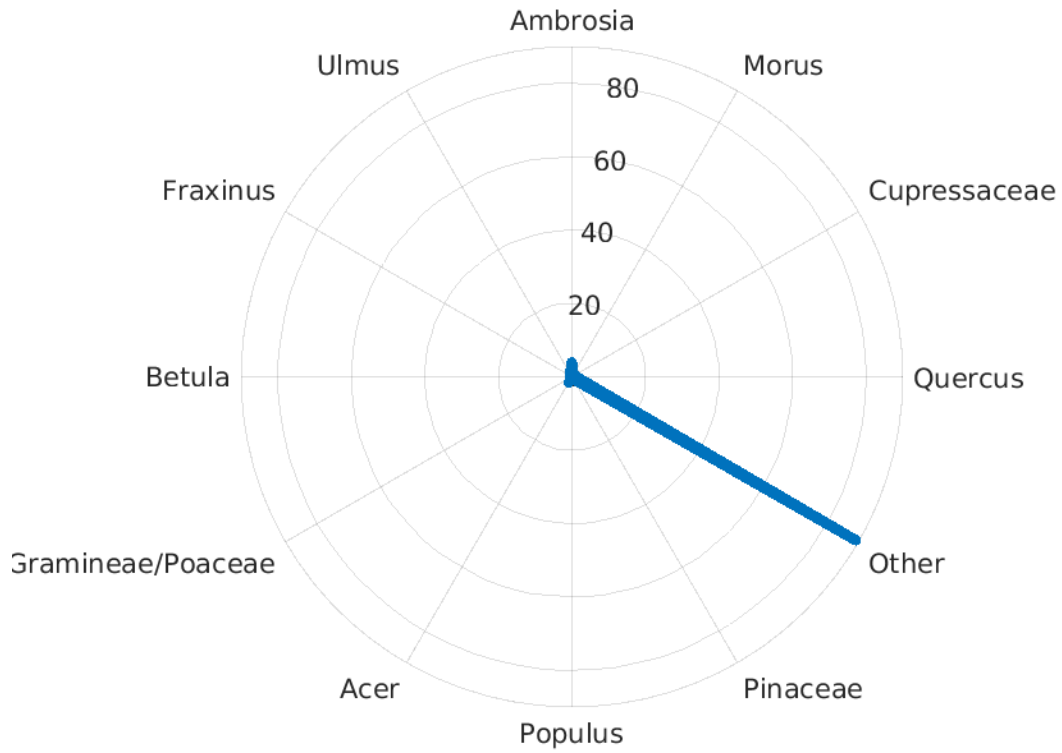
90

Austin TX: Percent of total APIn



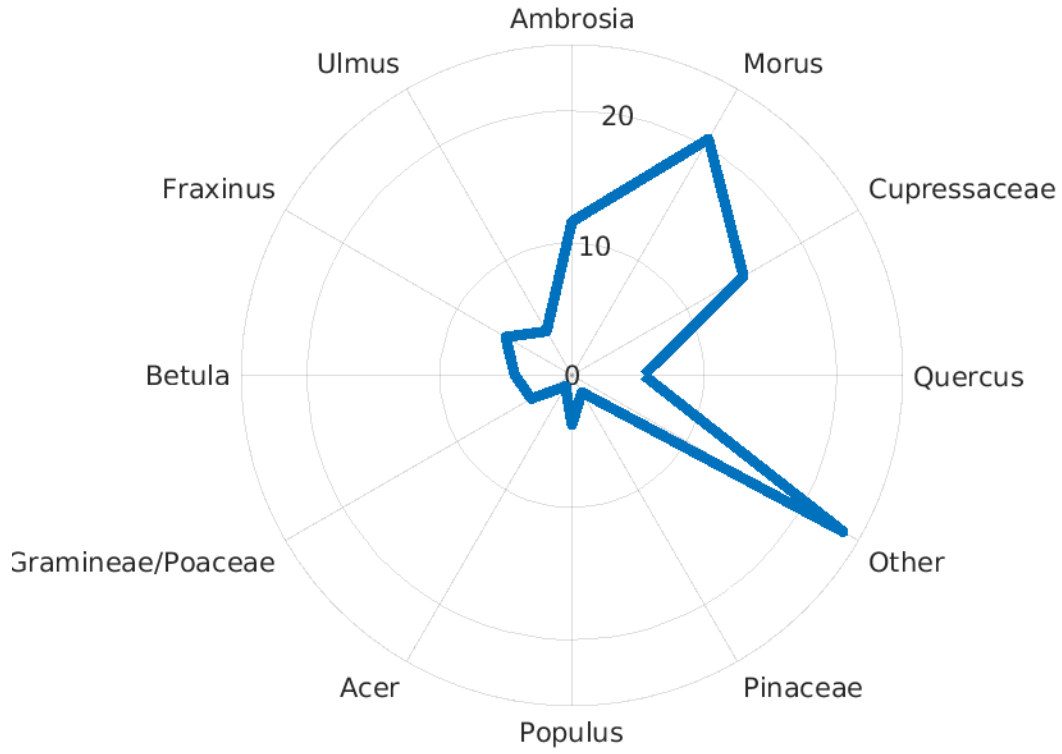
91

Baltimore MD: Percent of total APIn



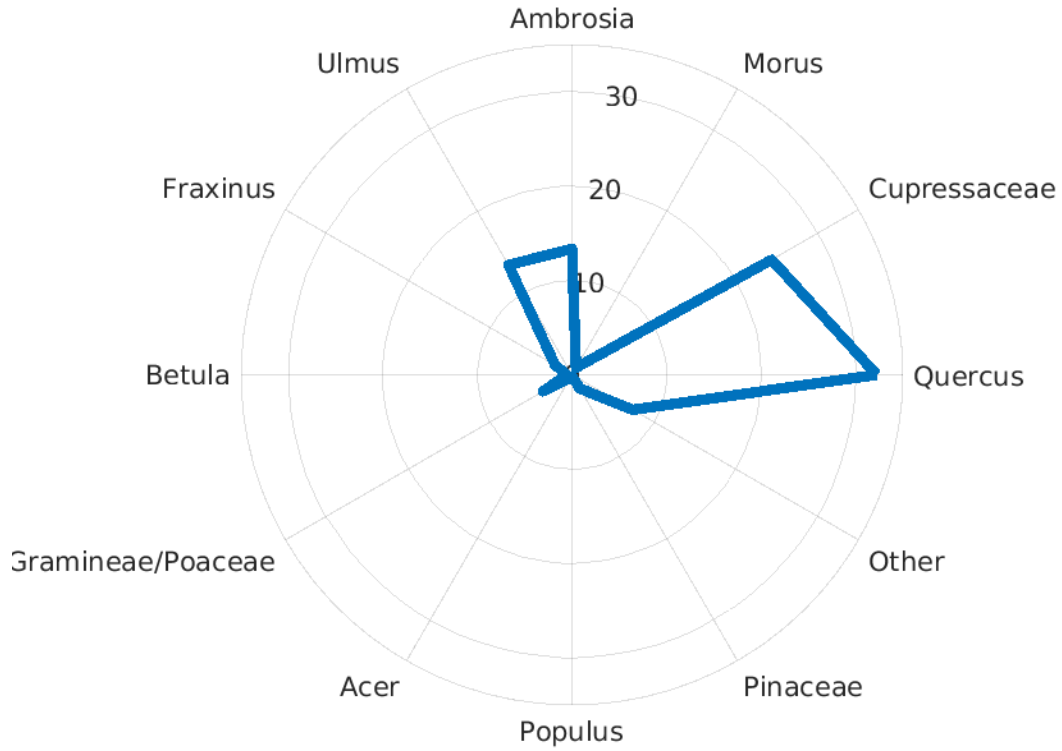
92

Bellevue NE: Percent of total APIn



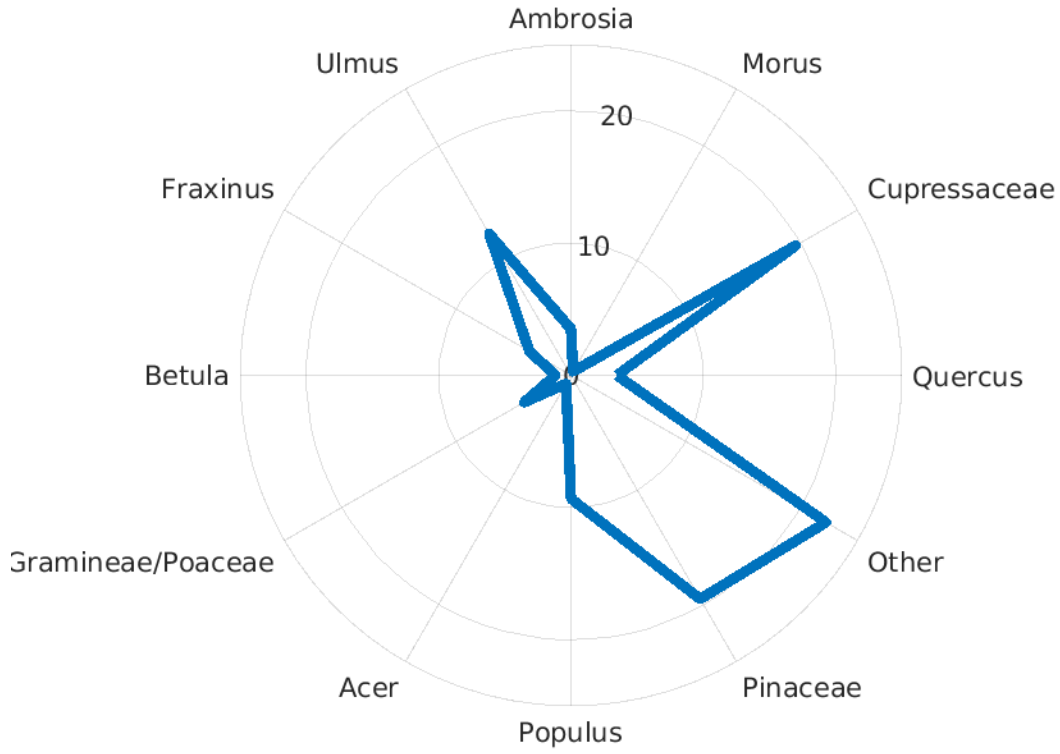
93

College Station TX: Percent of total APIn



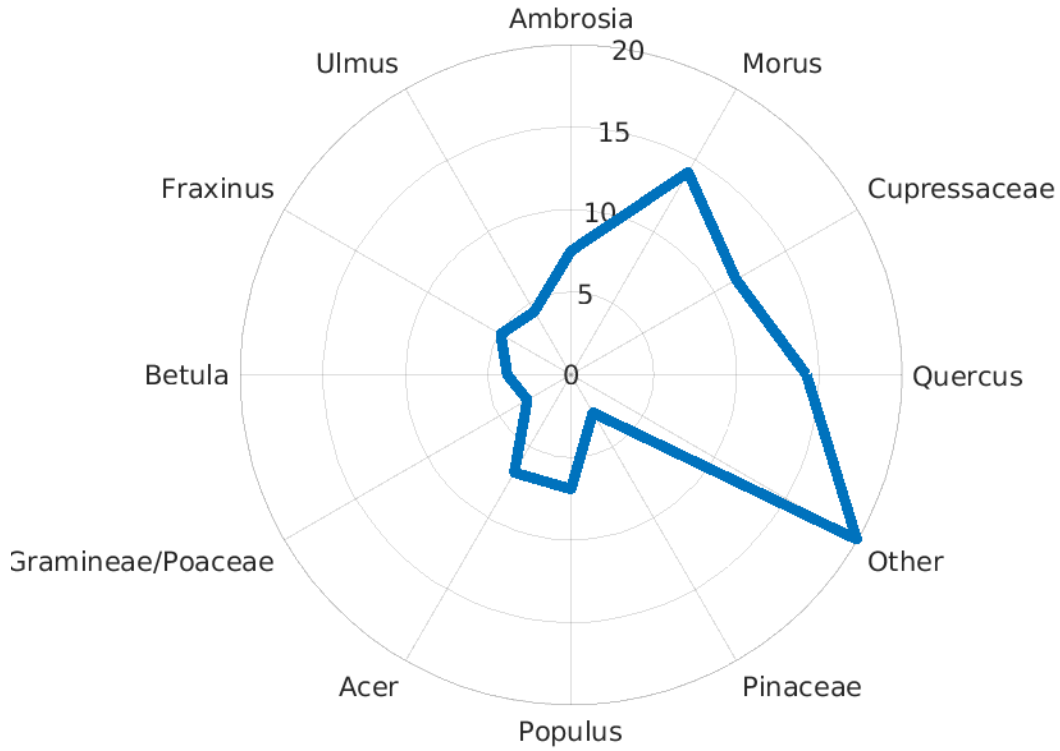
94

Colorado Springs CO: Percent of total APIn



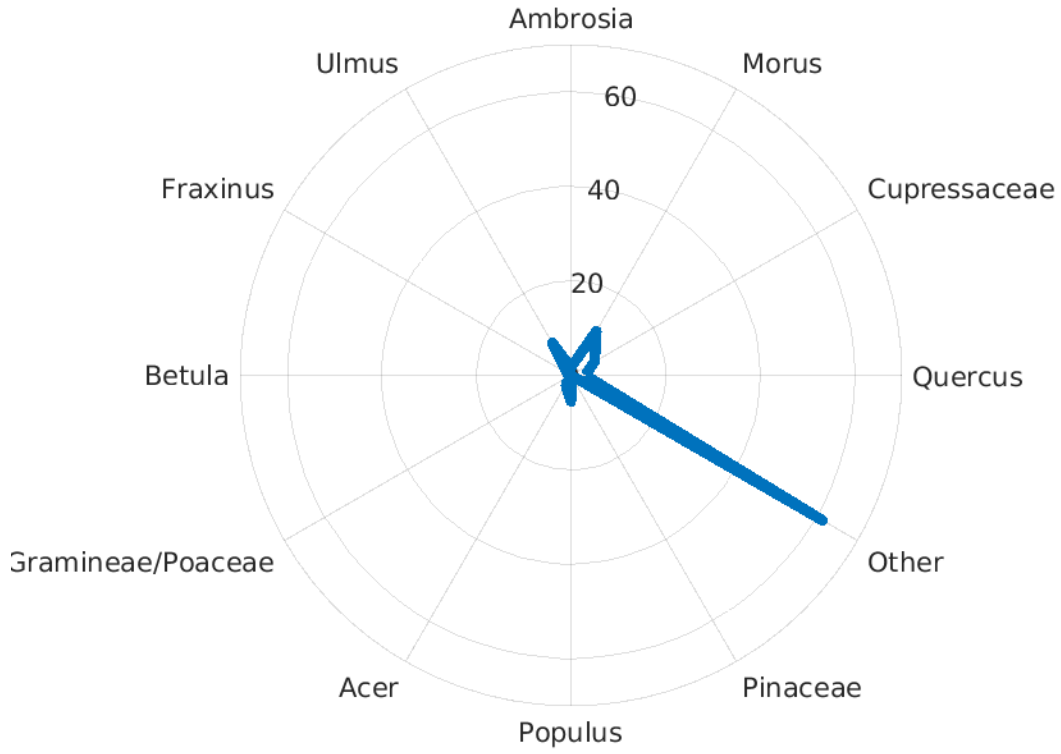
95

Dayton OH: Percent of total APIn



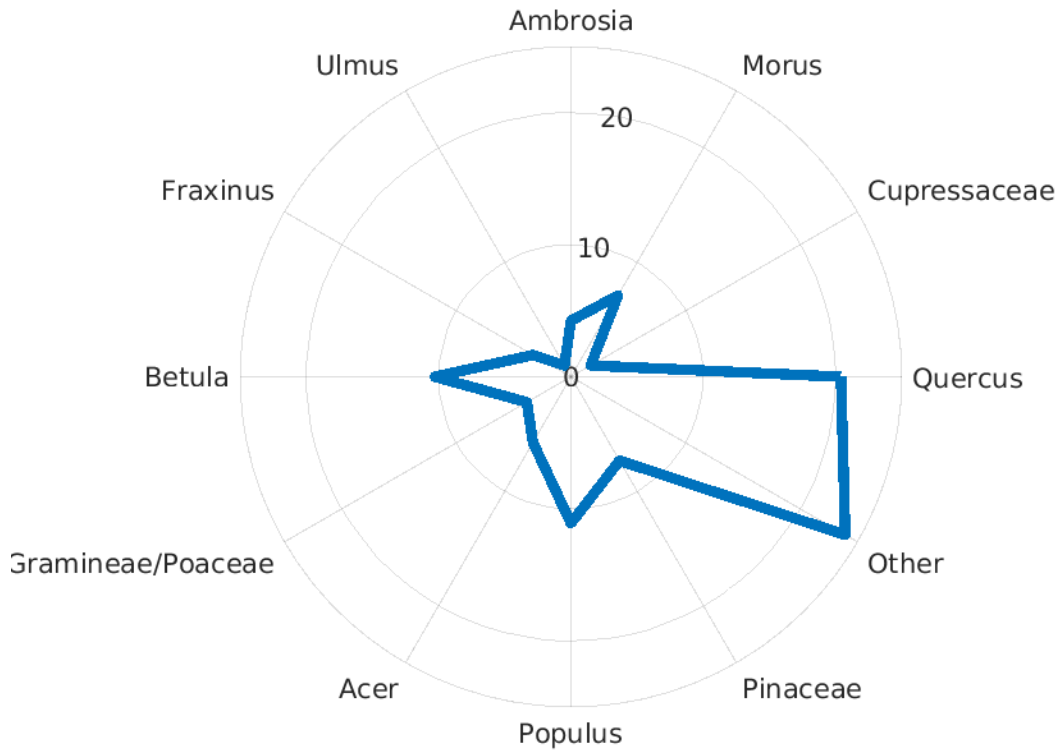
96

Draper UT: Percent of total APIn



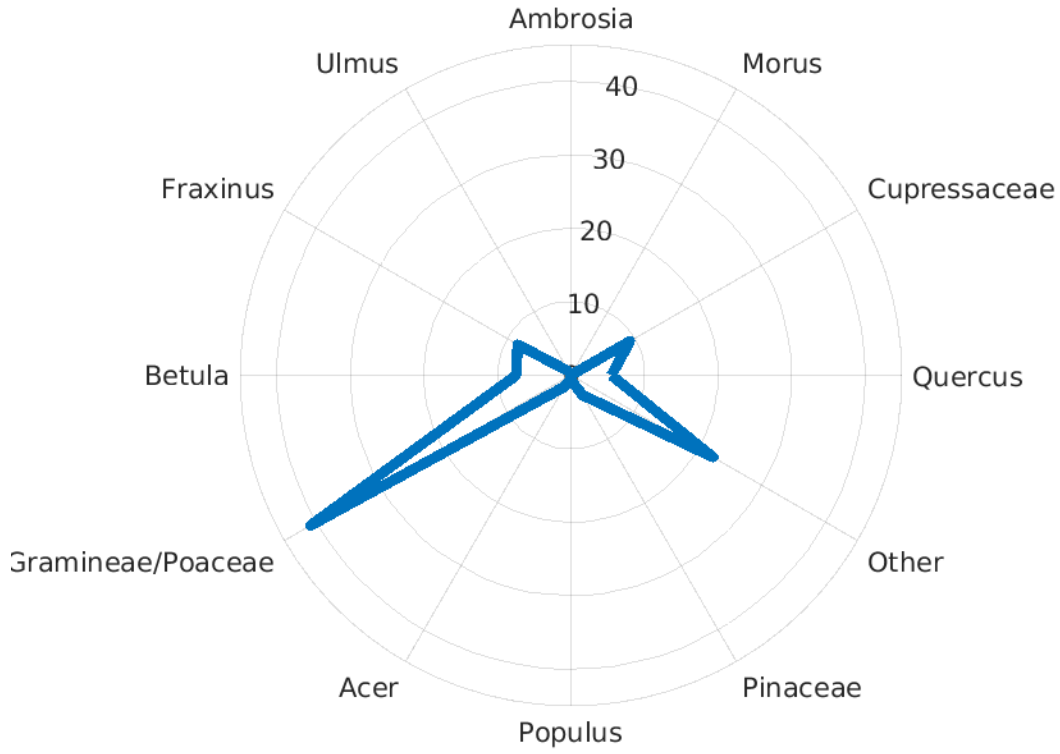
97

Erie PA: Percent of total APIn



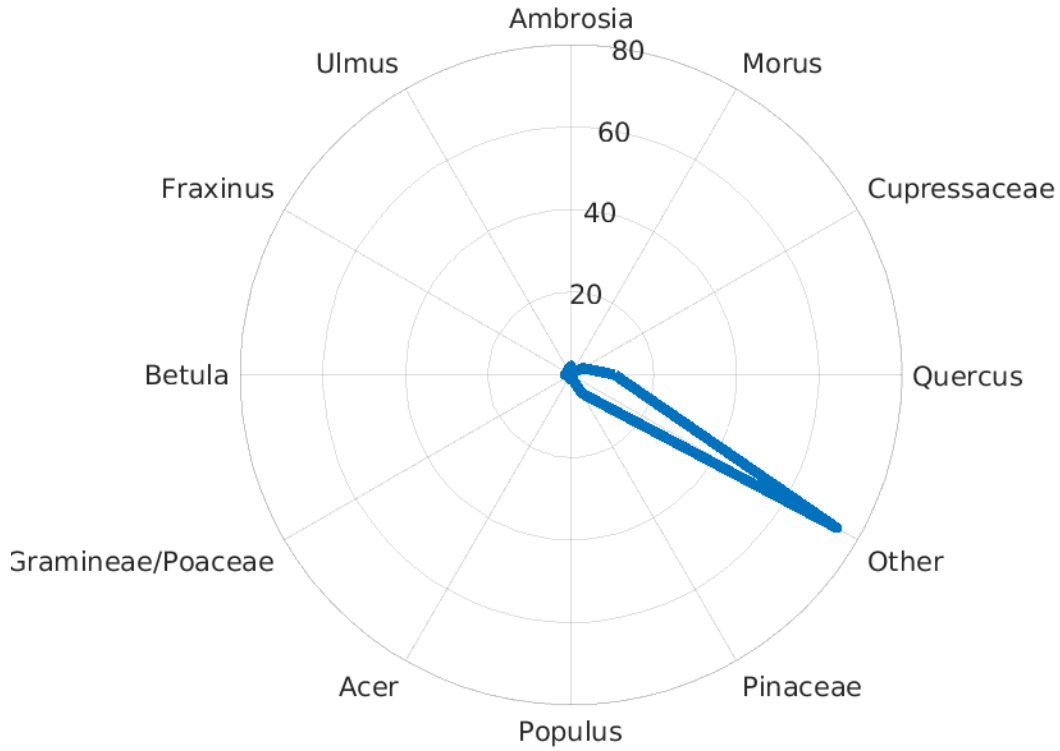
98

Eugene OR: Percent of total APIn



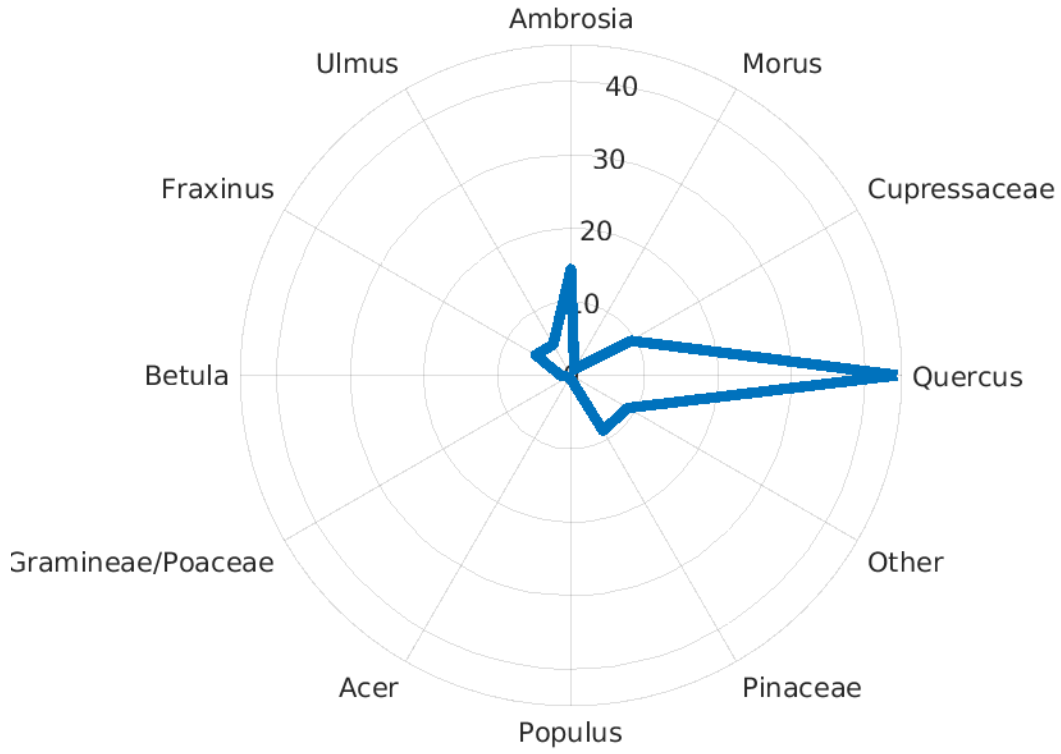
99

Greenville SC: Percent of total APIn



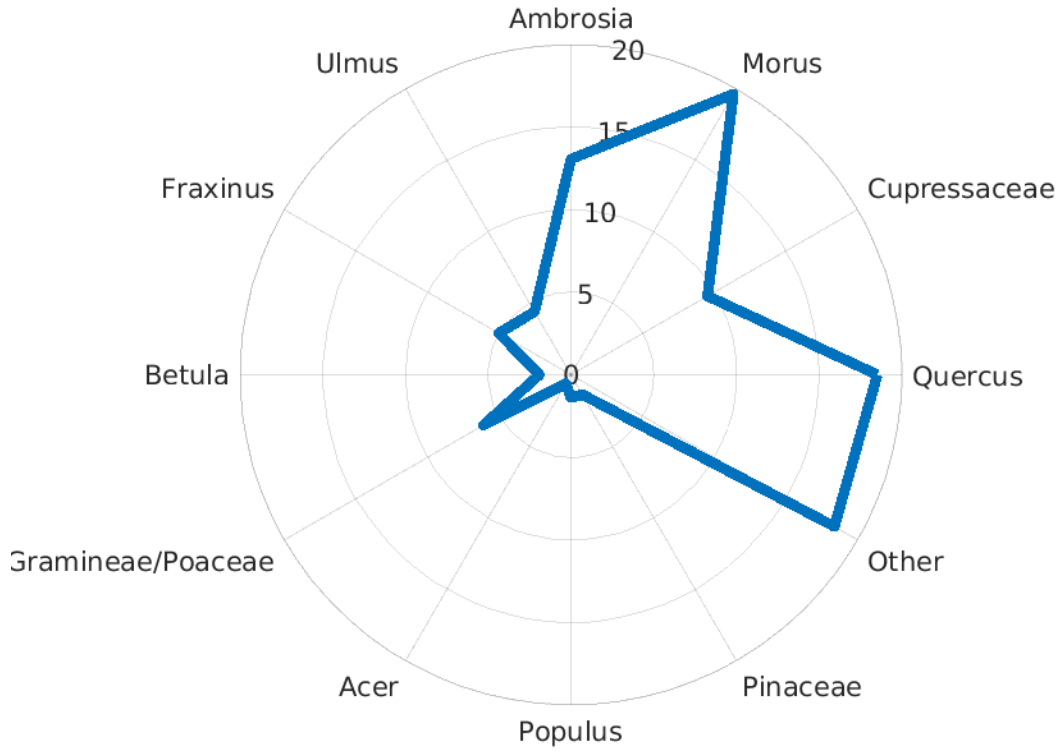
100

Houston TX: Percent of total APIn



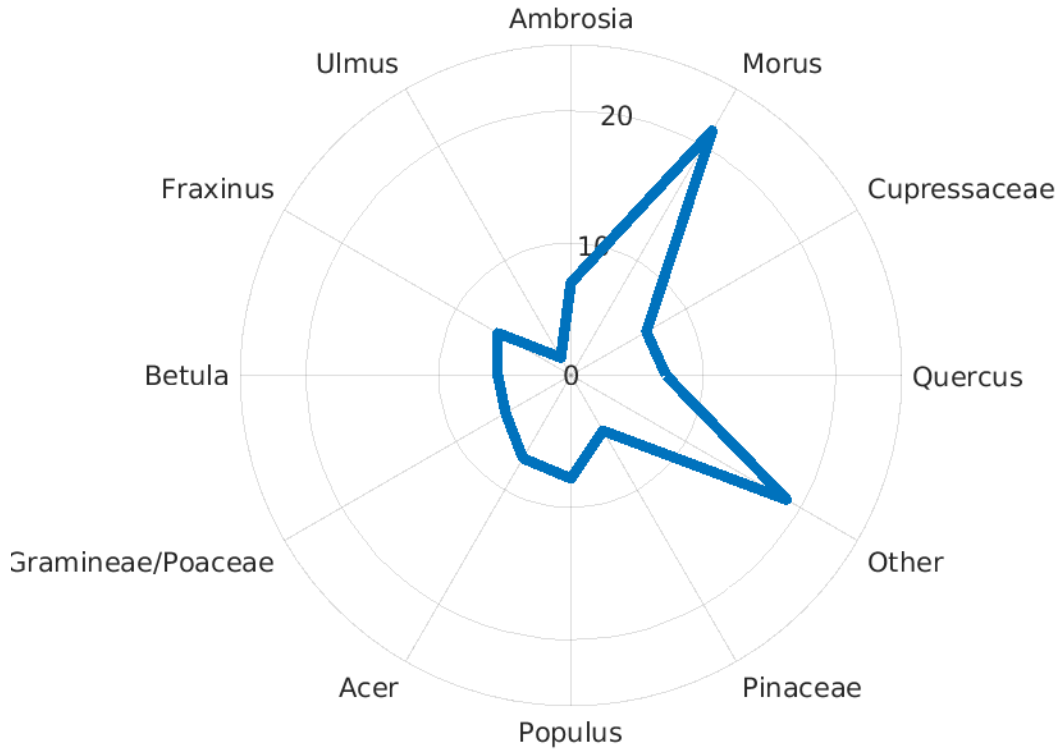
101

Kansas City MO: Percent of total APIn



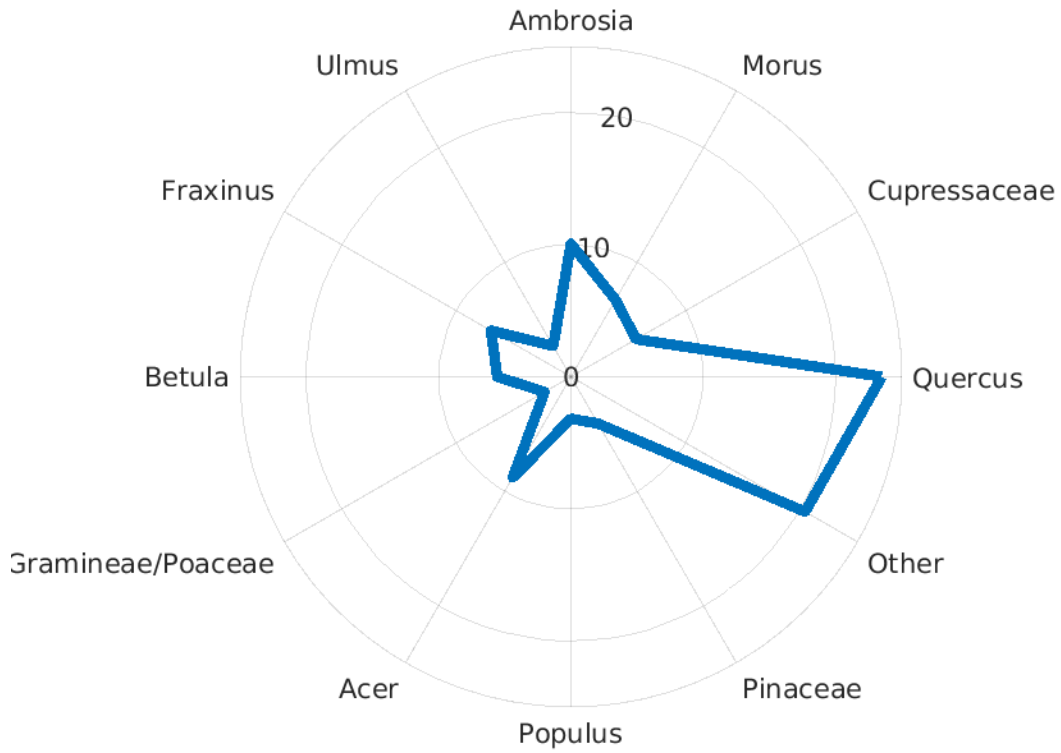
102

London ON: Percent of total APIn



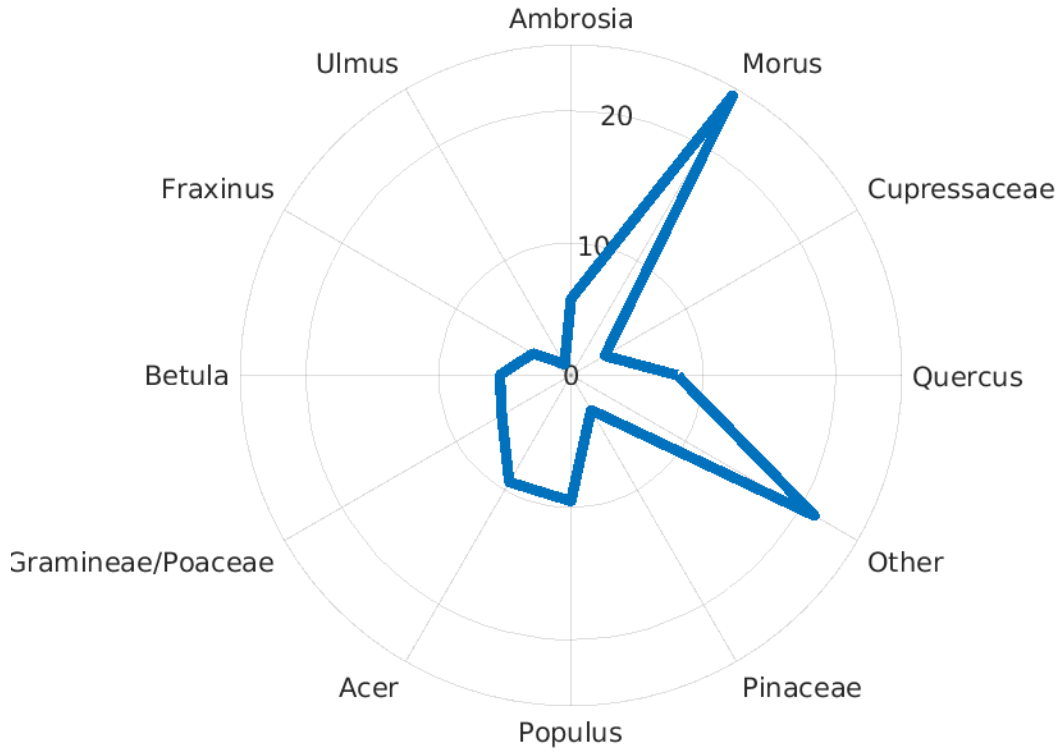
103

Madison WI: Percent of total APIn



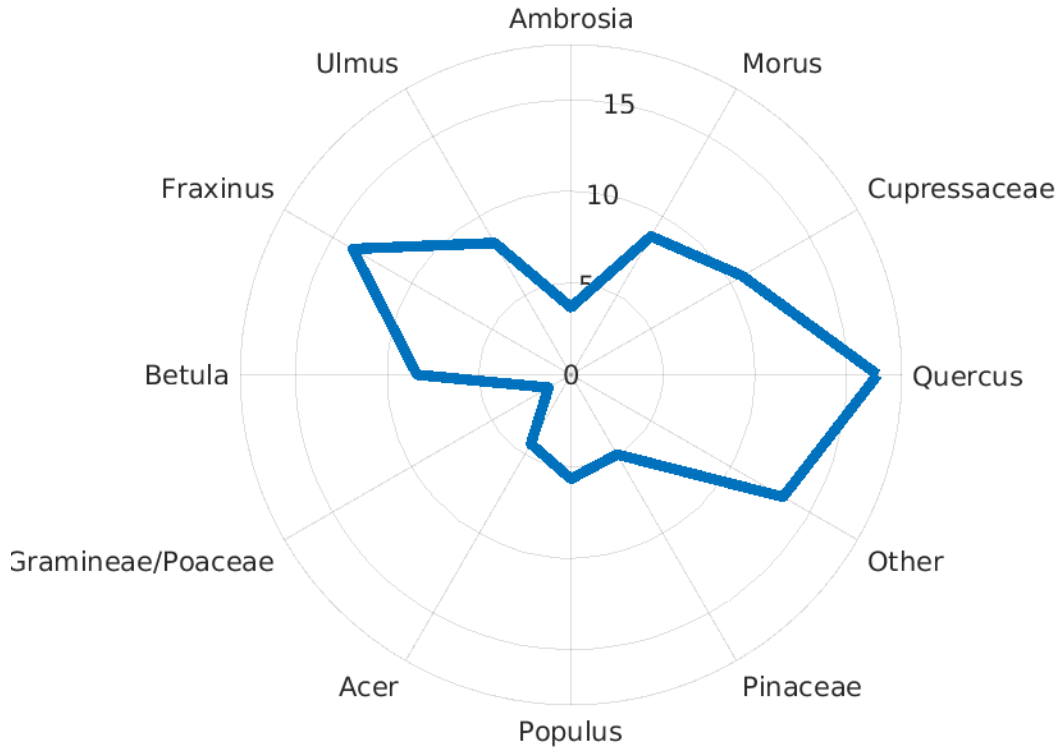
104

Melrose Park IL: Percent of total APIn



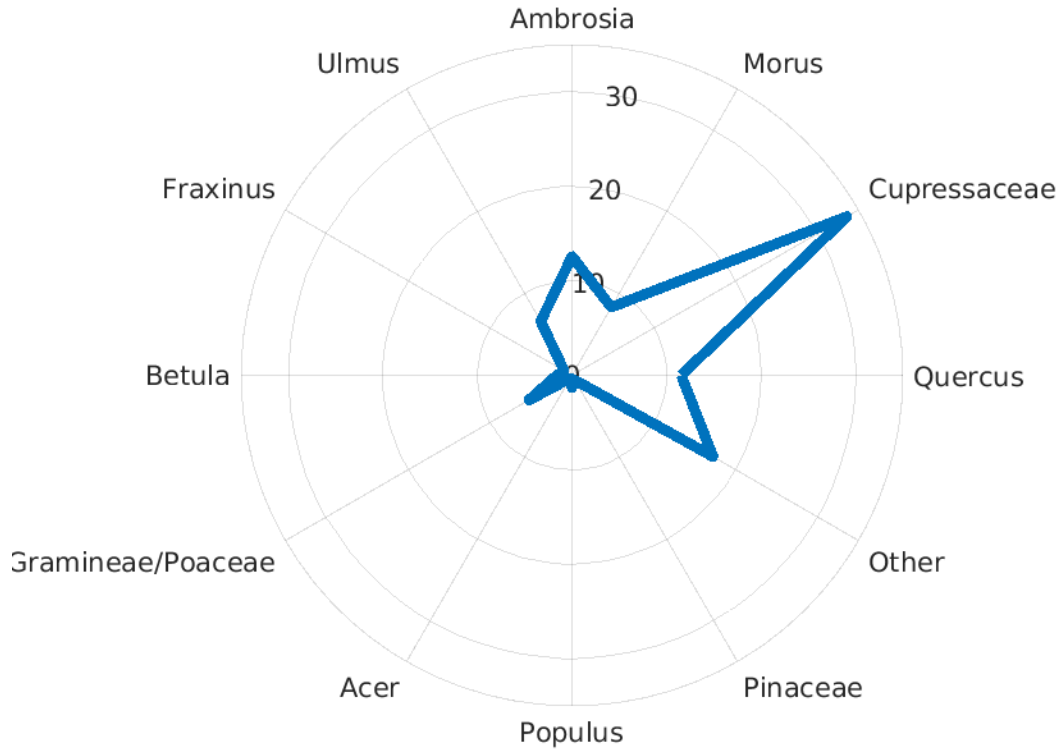
105

Minneapolis MN: Percent of total APIn



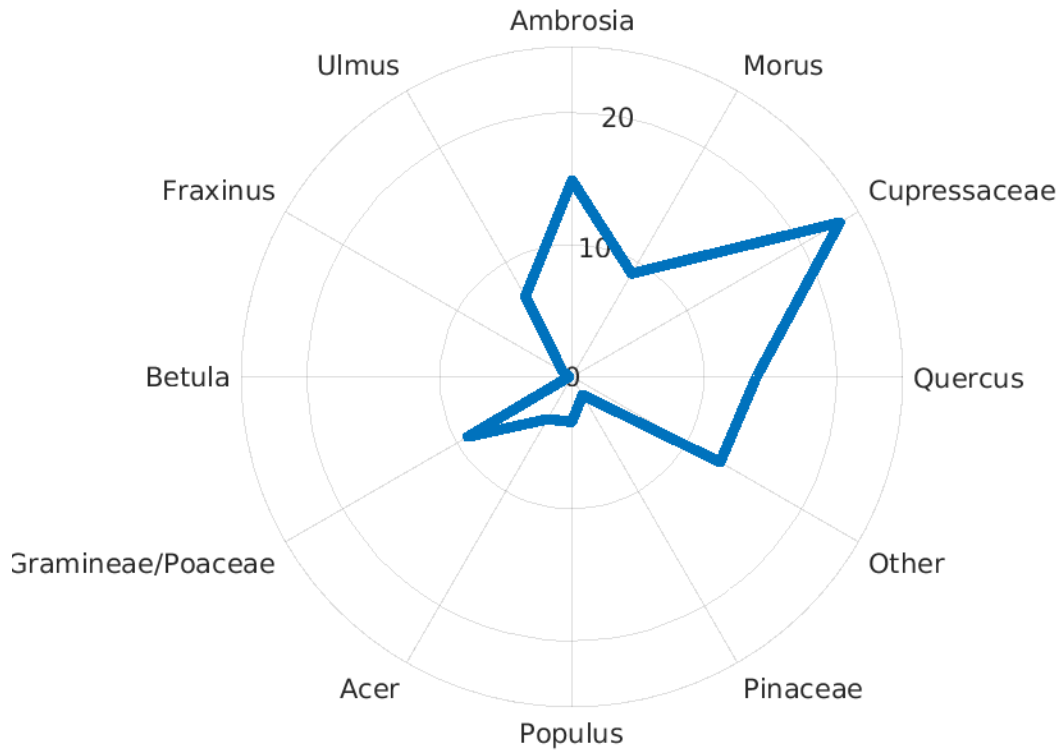
106

Oklahoma City OK: Percent of total APIn



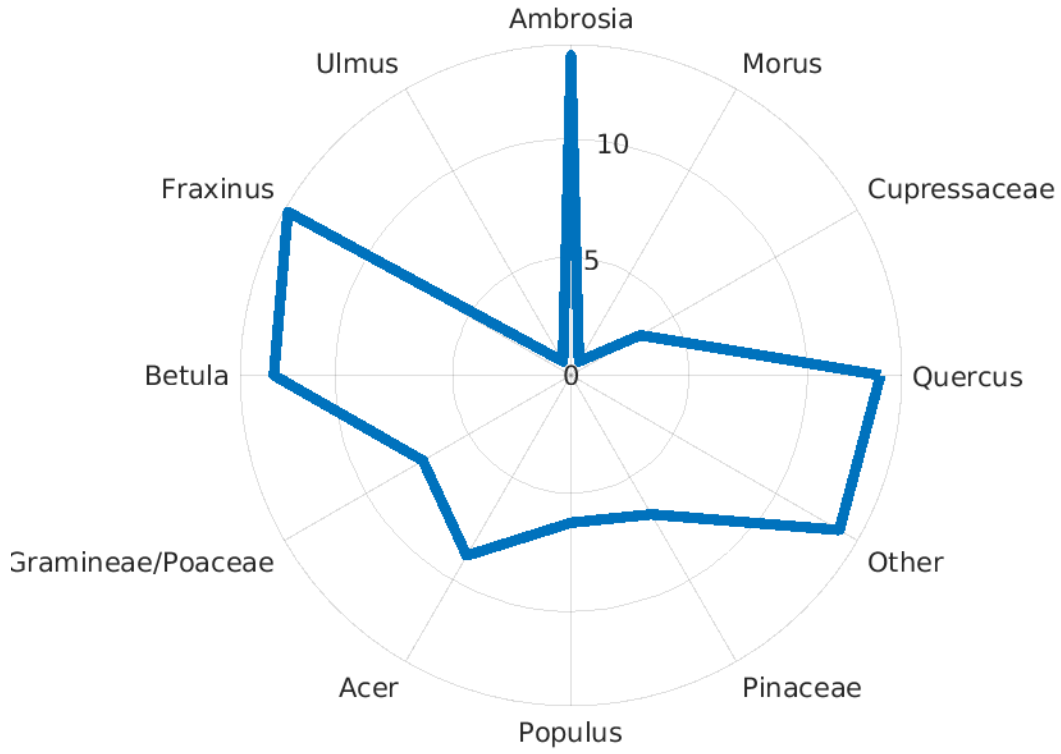
107

Oklahoma City OK: Percent of total APIn



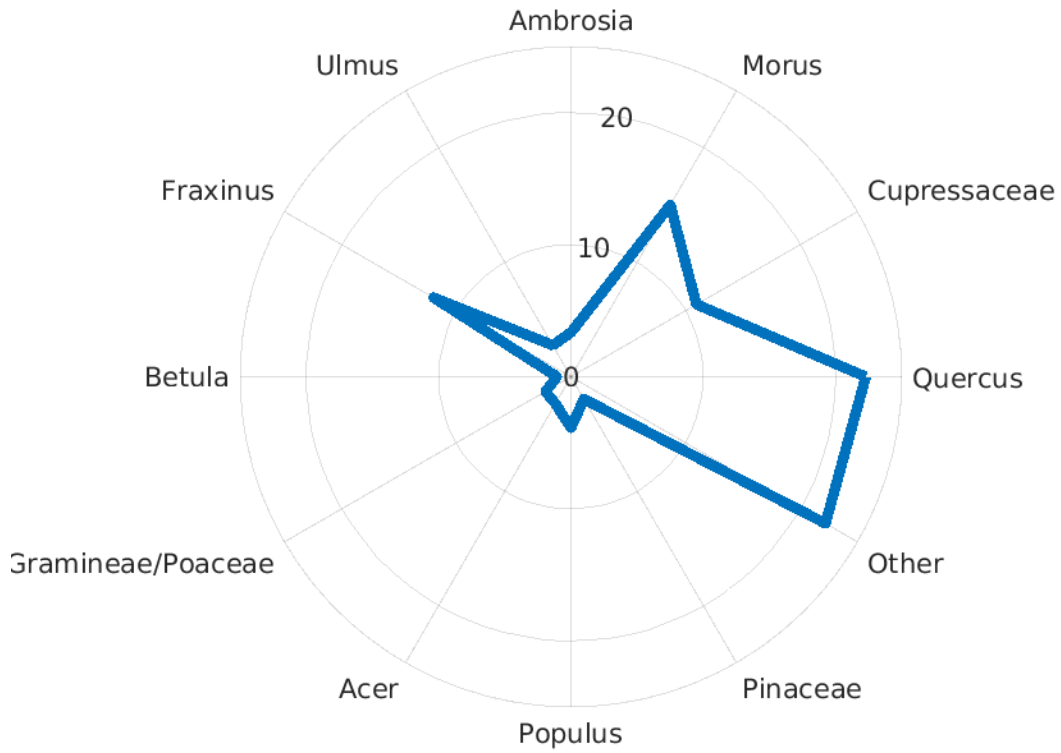
108

Rochester NY: Percent of total APIn



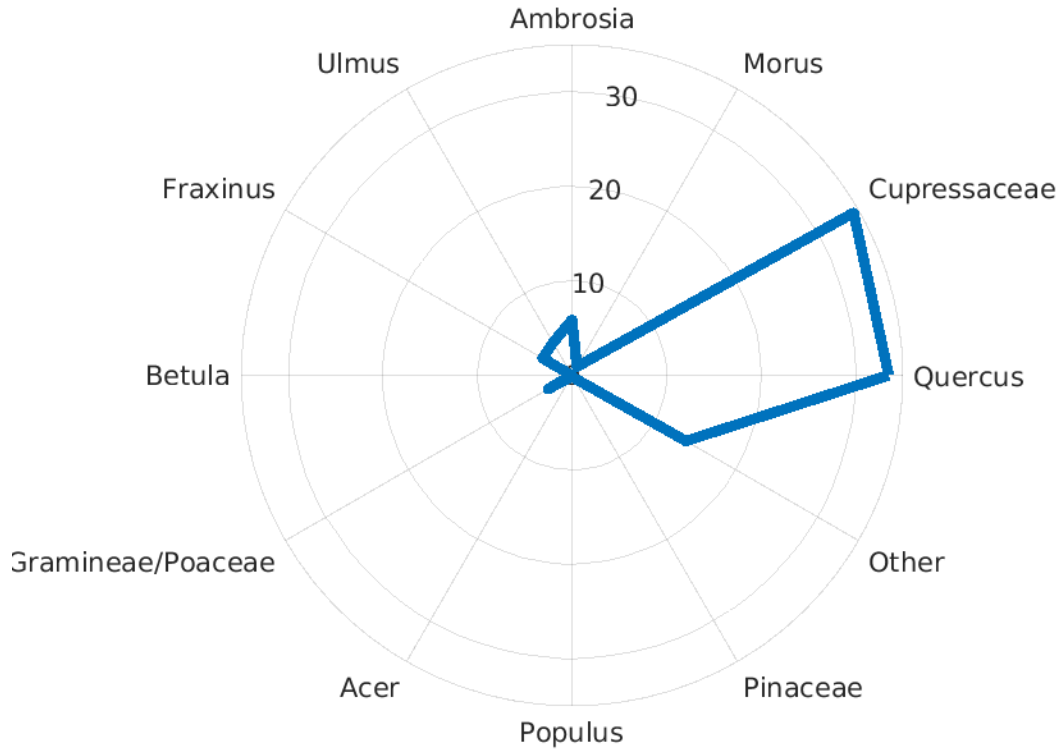
109

Saint Louis MO: Percent of total APIn



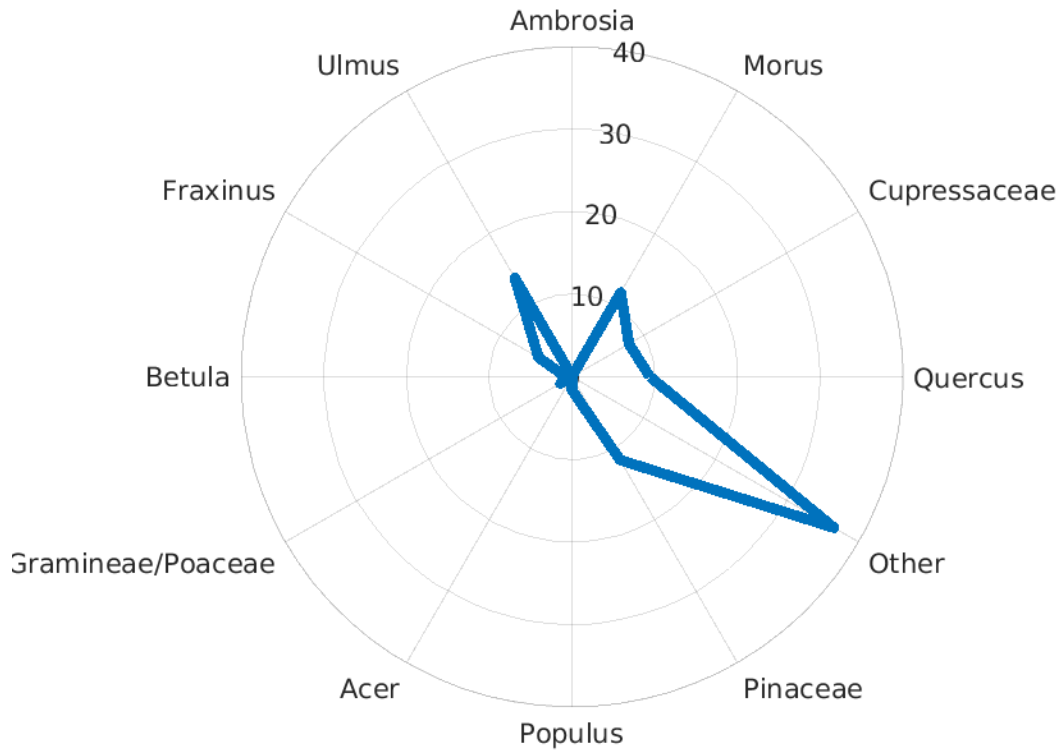
110

San Antonio TX: Percent of total APIn



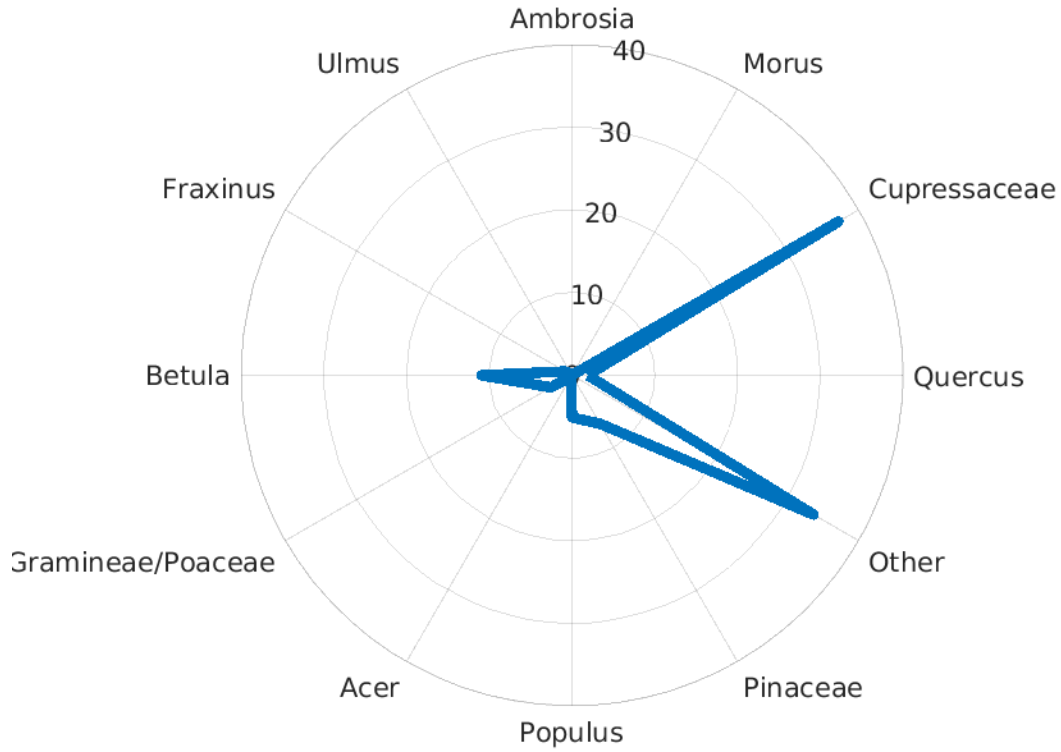
111

San Jose CA: Percent of total APIn



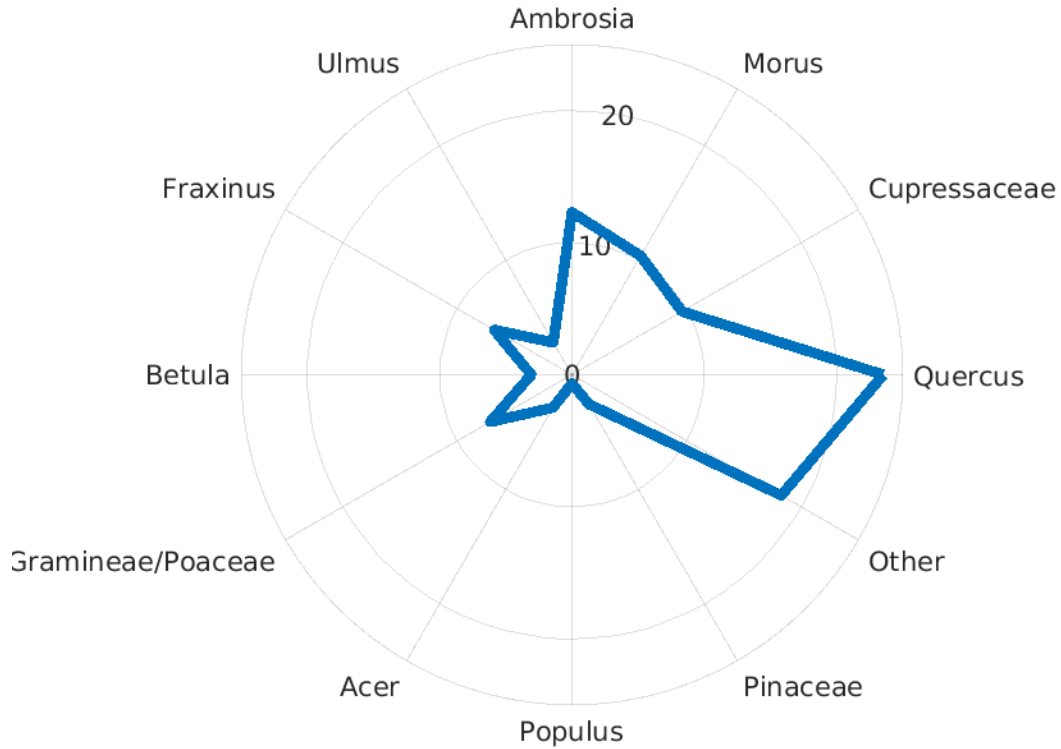
112

Seattle WA: Percent of total APIn



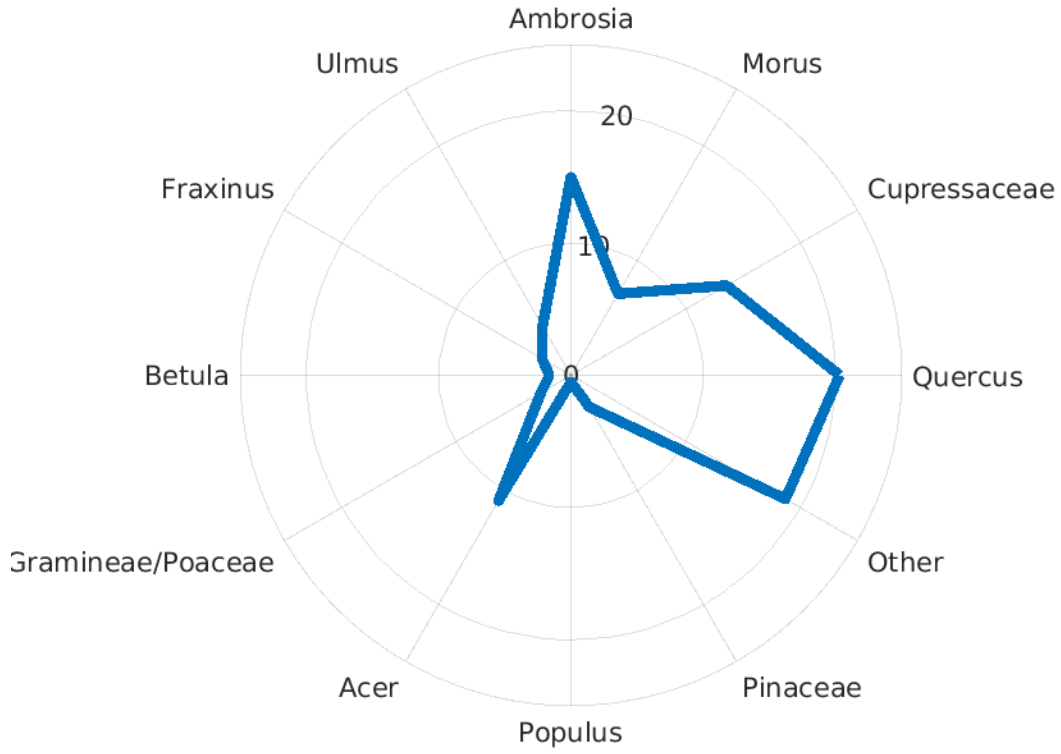
113

Springfield MO: Percent of total APIn



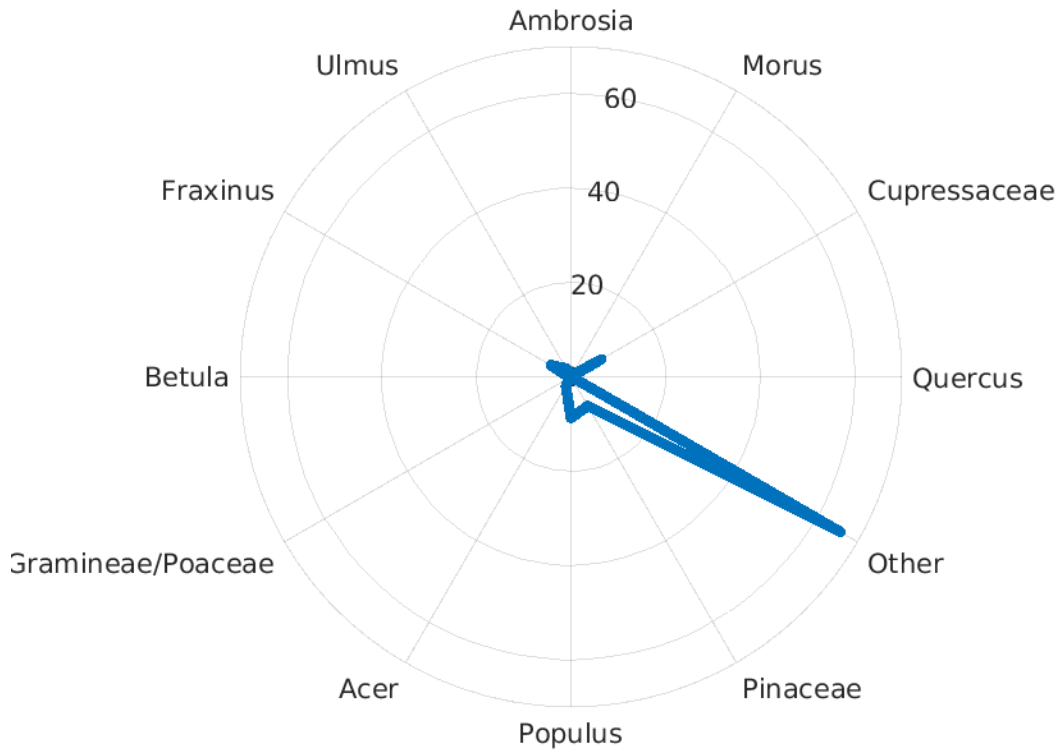
114

Tulsa OK: Percent of total APIn



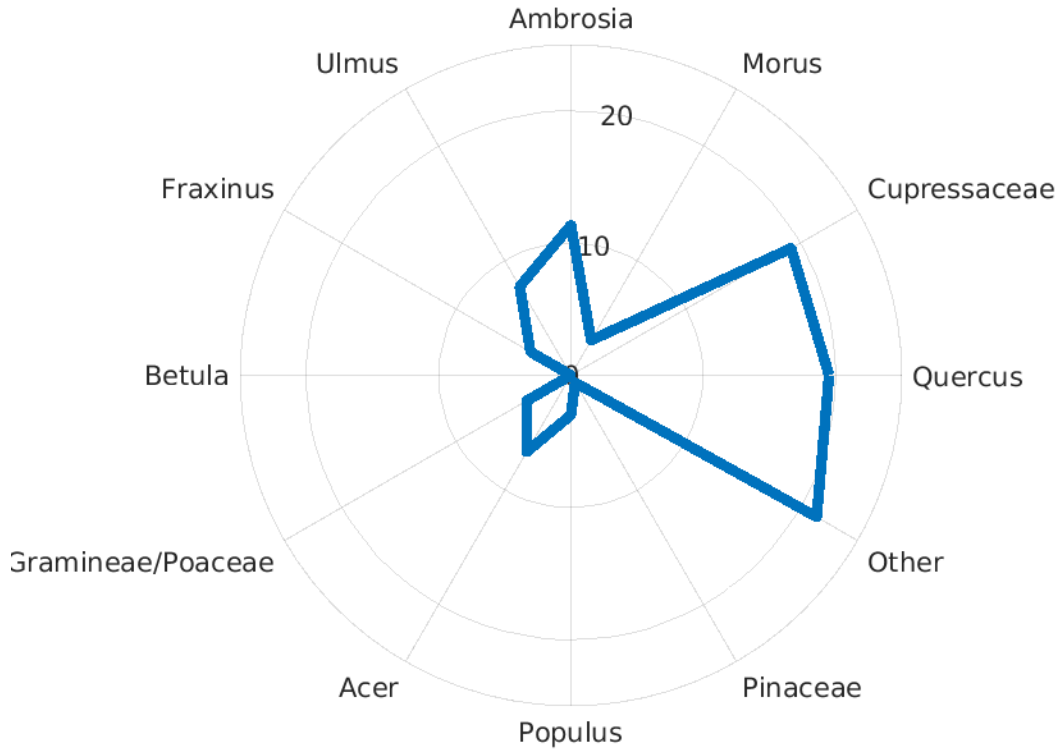
115

Twin Falls ID: Percent of total APIn



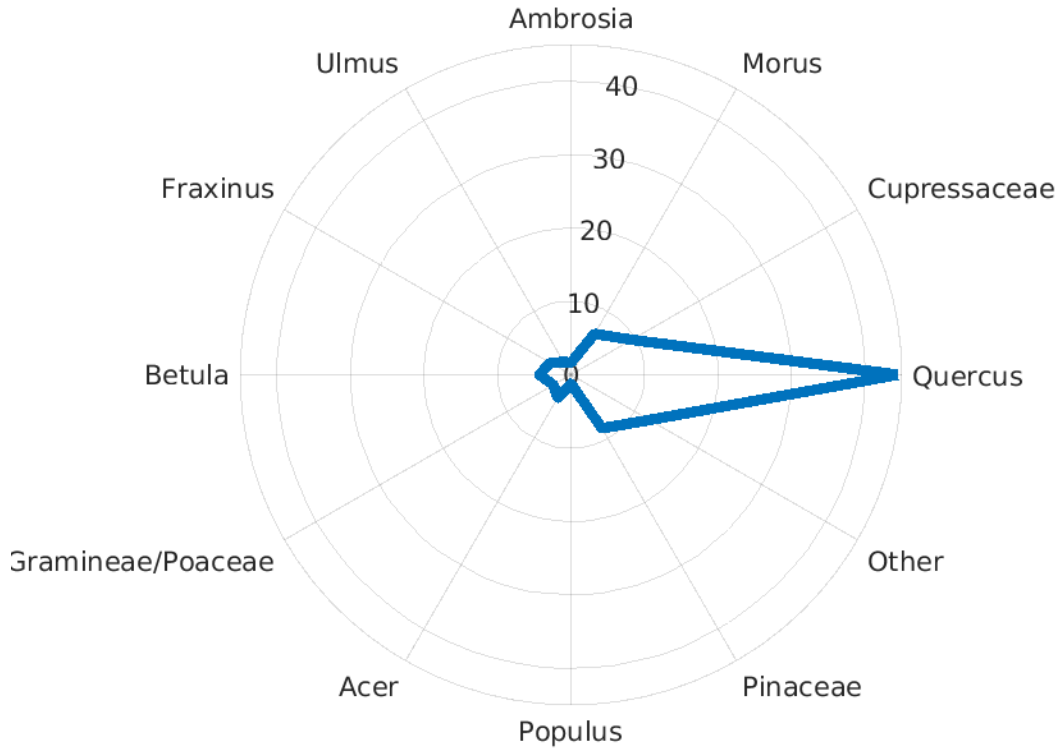
116

Waco TX: Percent of total APIn



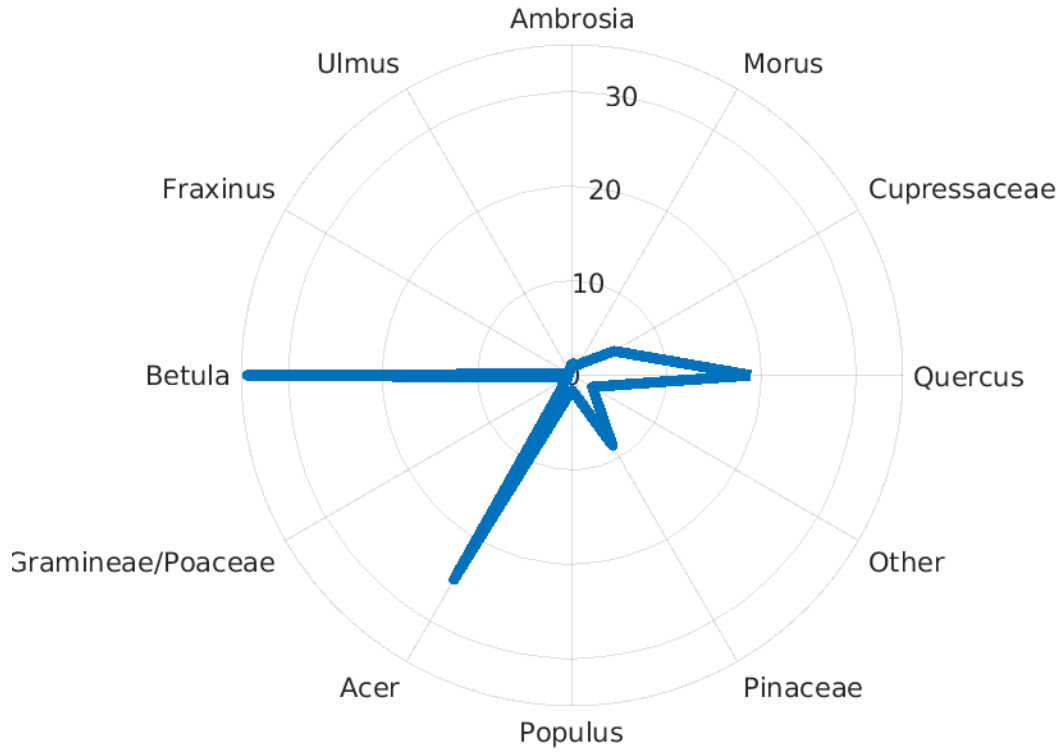
117

Washington DC: Percent of total APIn



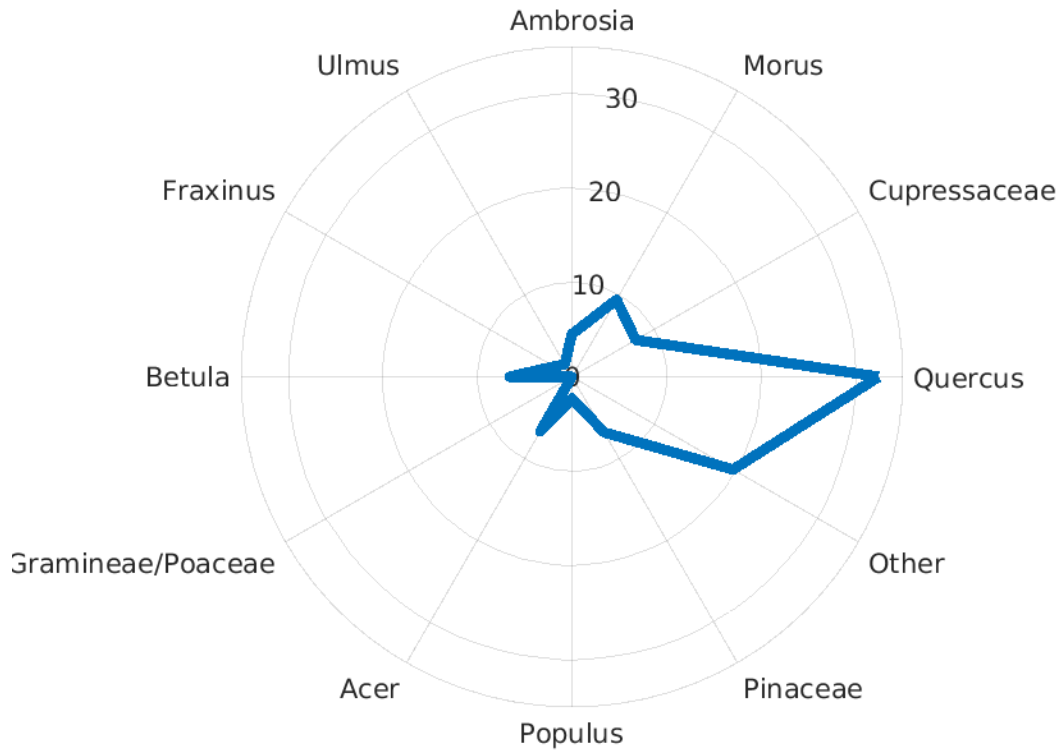
118

Waterbury CT: Percent of total APIn



119

York PA: Percent of total APIn



120