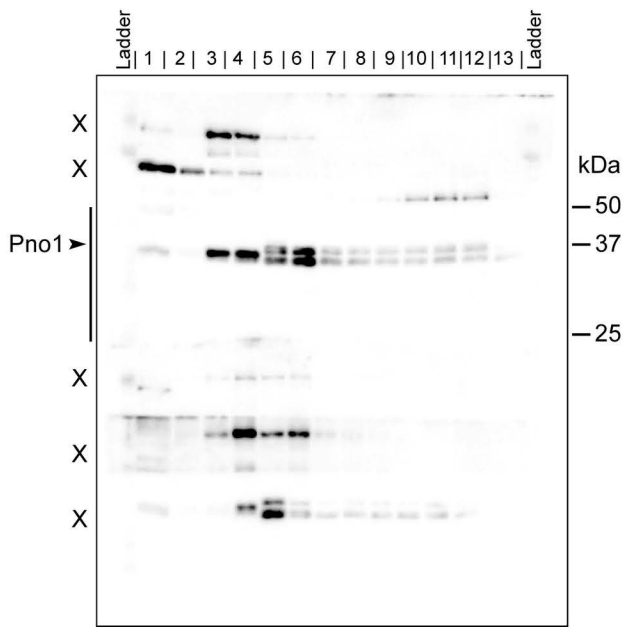
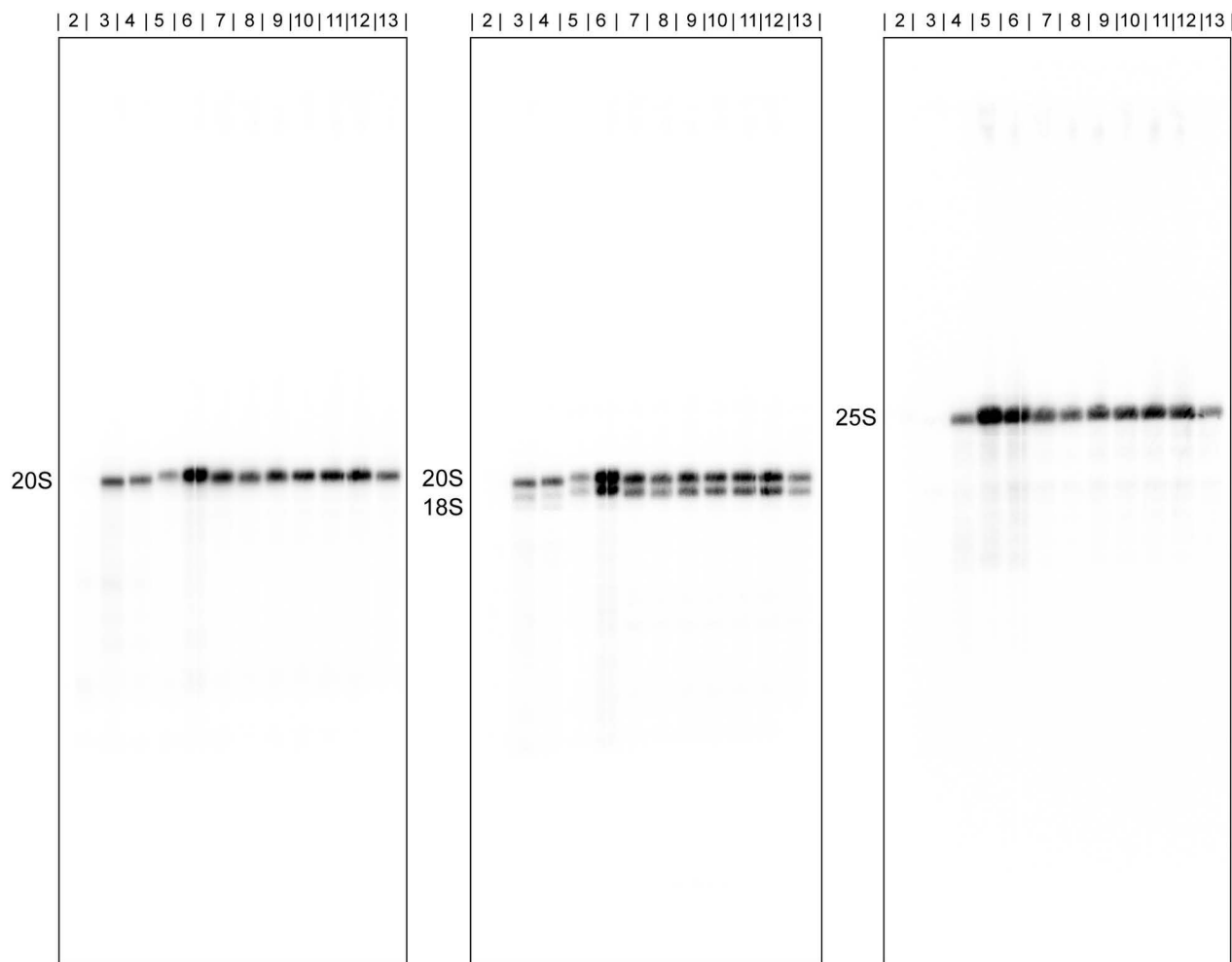


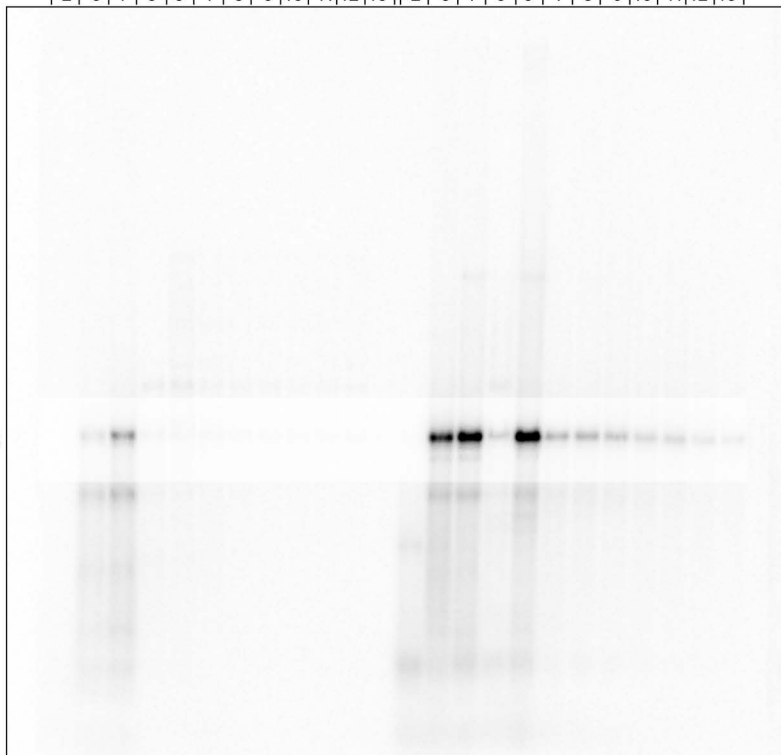
1A Gal::Nob1



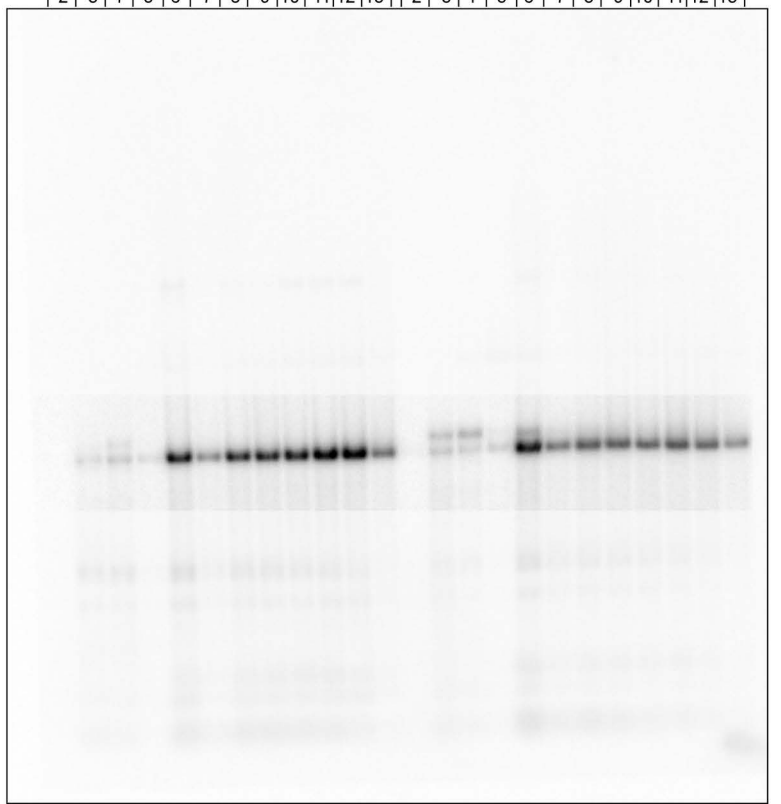
1D WT + Nob1**1E** WT + Nob1-D15N

| 2 | 3 | 4 | 5 | 6 | 7 | 8 | 9 | 10 | 11 | 12 | 13 | | 2 | 3 | 4 | 5 | 6 | 7 | 8 | 9 | 10 | 11 | 12 | 13 |

20S

**1D** WT + Nob1**1E** WT + Nob1-D15N

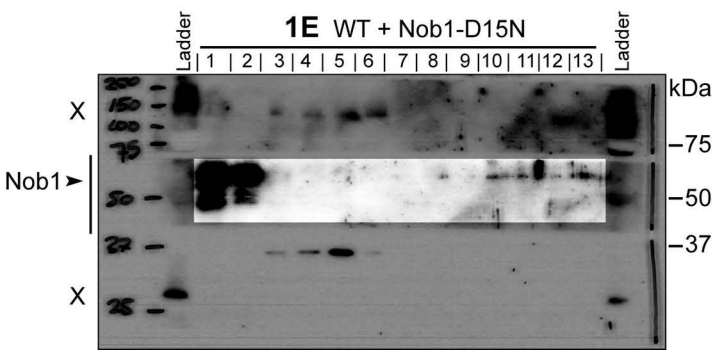
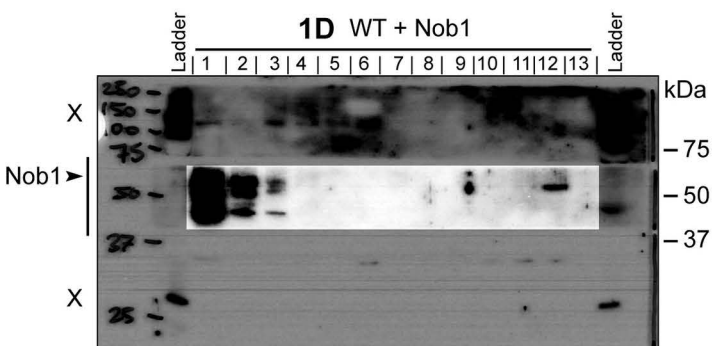
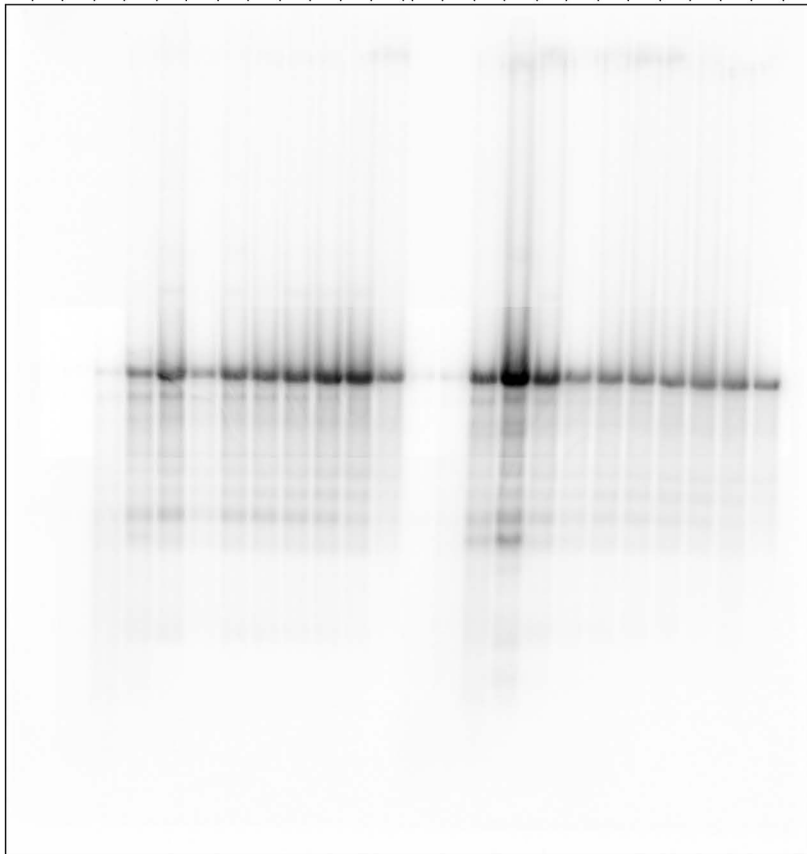
| 2 | 3 | 4 | 5 | 6 | 7 | 8 | 9 | 10 | 11 | 12 | 13 | | 2 | 3 | 4 | 5 | 6 | 7 | 8 | 9 | 10 | 11 | 12 | 13 |

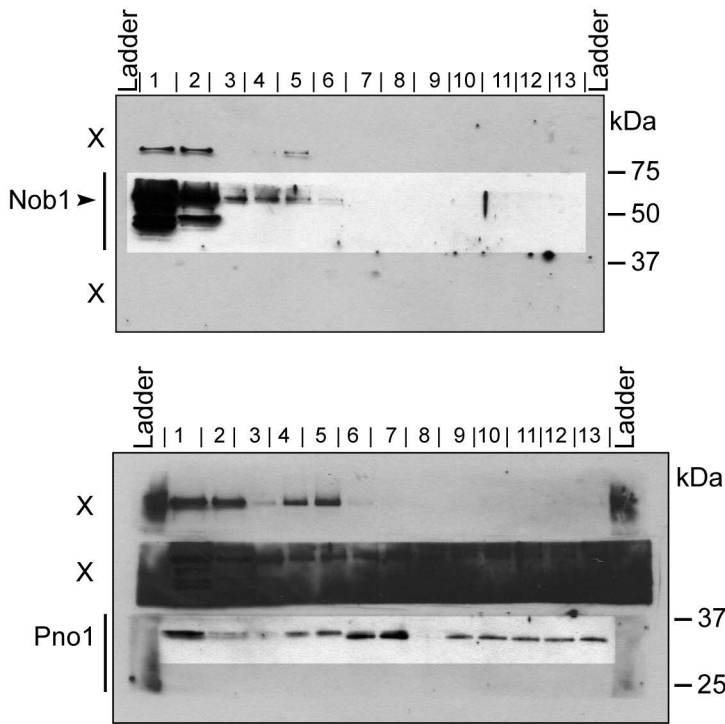
20S
18S

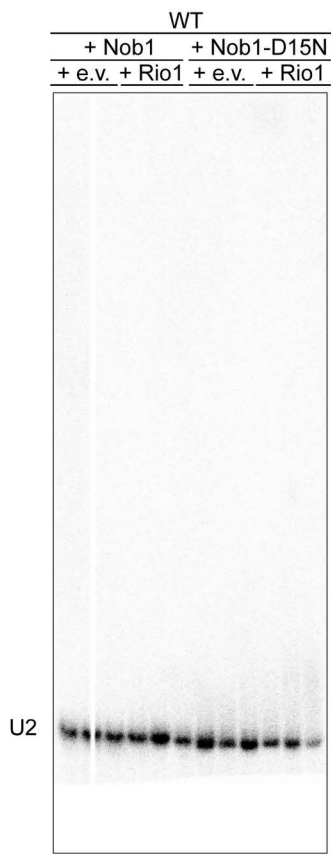
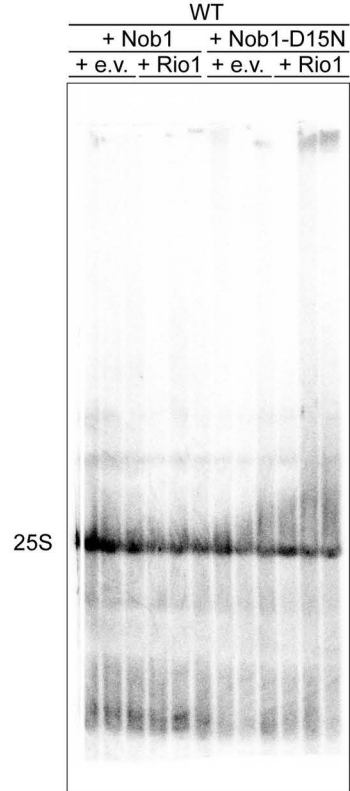
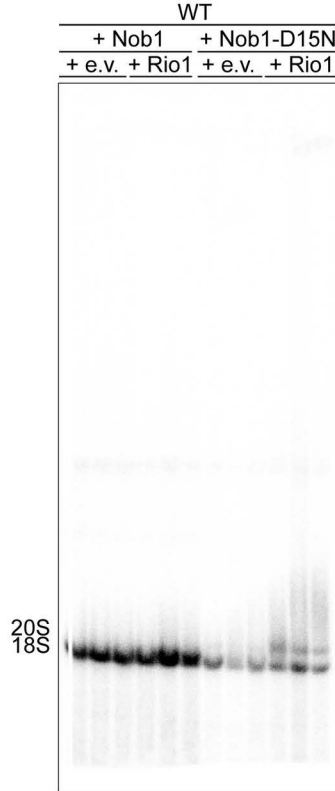
1D WT + Nob1**1E WT + Nob1-D15N**

| 2 | 3 | 4 | 5 | 6 | 7 | 8 | 9 | 10 | 11 | 12 | 13 | | 2 | 3 | 4 | 5 | 6 | 7 | 8 | 9 | 10 | 11 | 12 | 13 |

25S



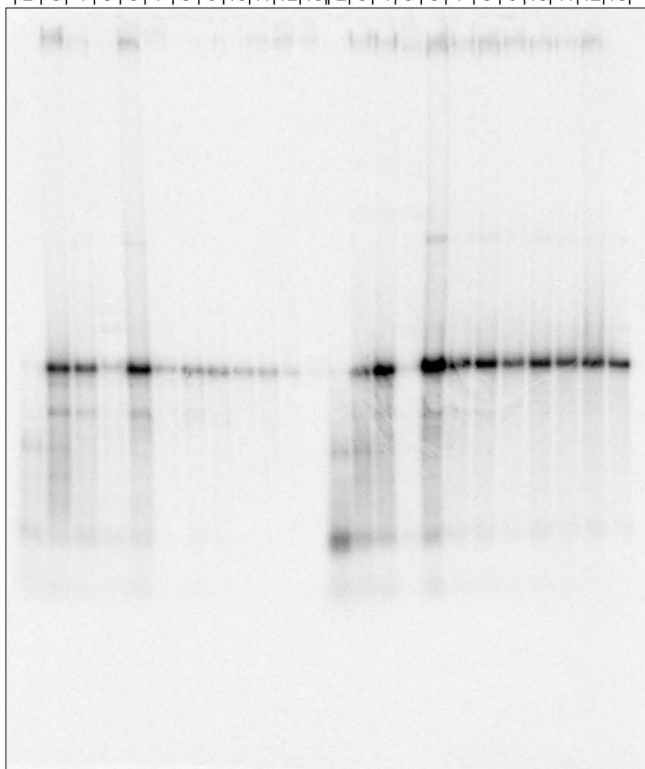
1F WT + TEF::Nob1

3B

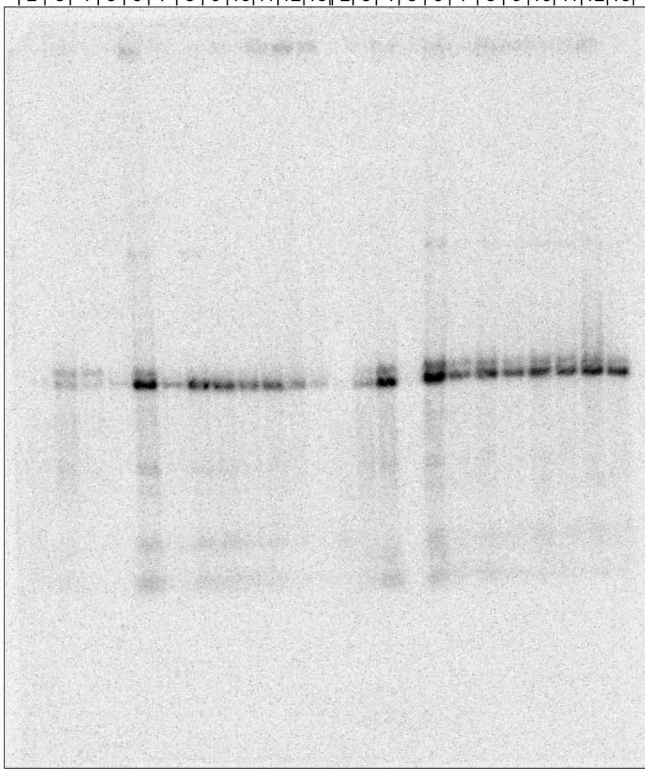
3CWT + Nob1-D15N + e.v.WT + Nob1-D15N + Rio1

| 2 | 3 | 4 | 5 | 6 | 7 | 8 | 9 | 10 | 11 | 12 | 13 | | 2 | 3 | 4 | 5 | 6 | 7 | 8 | 9 | 10 | 11 | 12 | 13 |

20S

WT + Nob1-D15N + e.v.WT + Nob1-D15N + Rio1

| 2 | 3 | 4 | 5 | 6 | 7 | 8 | 9 | 10 | 11 | 12 | 13 | | 2 | 3 | 4 | 5 | 6 | 7 | 8 | 9 | 10 | 11 | 12 | 13 |

20S
18S

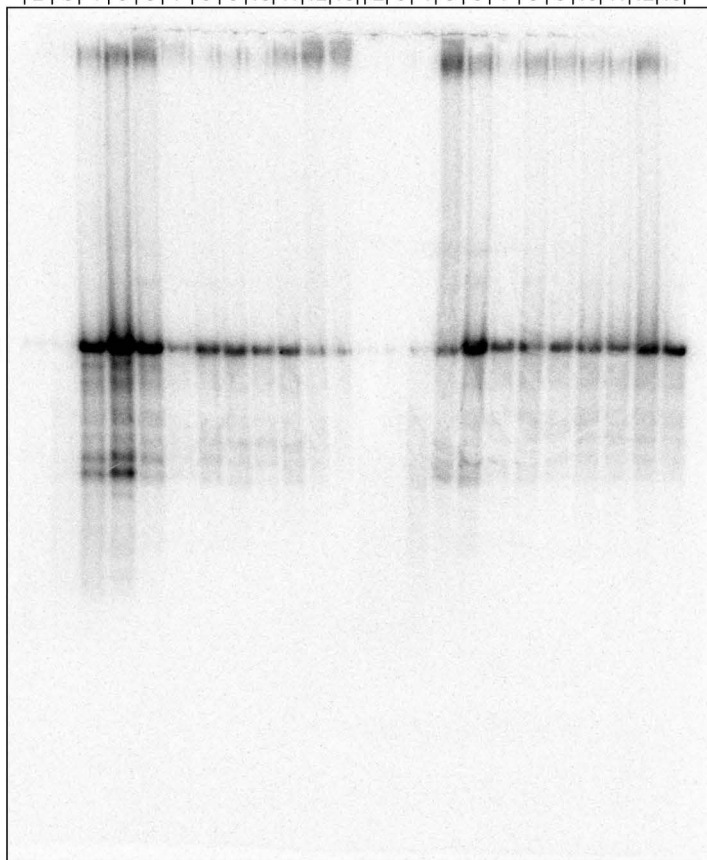
3C

WT + Nob1-D15N + e.v.

WT + Nob1-D15N + Rio1

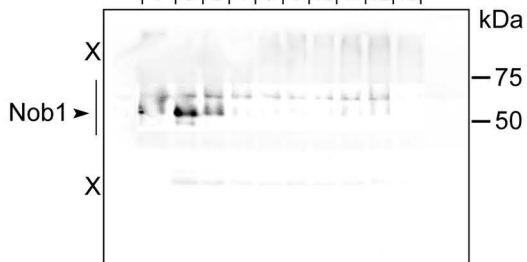
| 2 | 3 | 4 | 5 | 6 | 7 | 8 | 9 | 10 | 11 | 12 | 13 | | 2 | 3 | 4 | 5 | 6 | 7 | 8 | 9 | 10 | 11 | 12 | 13 |

25S



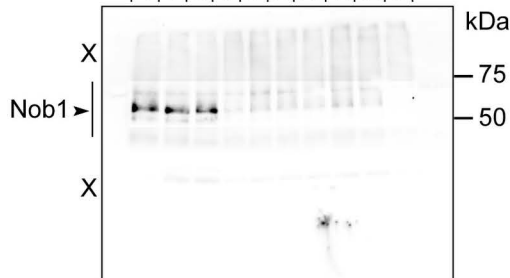
WT + Nob1-D15N + e.v.

| 4 | 5 | 6 | 7 | 8 | 9 | 10 | 11 | 12 | 13 |



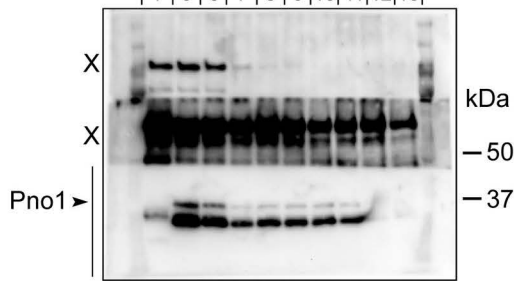
WT + Nob1-D15N + Rio1

| 4 | 5 | 6 | 7 | 8 | 9 | 10 | 11 | 12 | 13 |



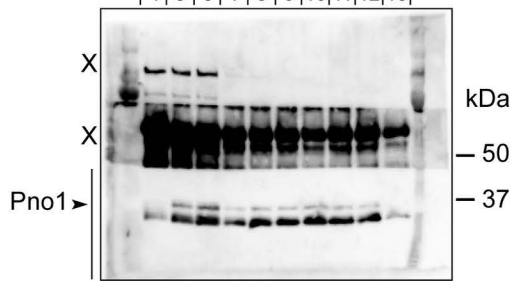
WT + Nob1-D15N + e.v.

| 4 | 5 | 6 | 7 | 8 | 9 | 10 | 11 | 12 | 13 |



WT + Nob1-D15N + Rio1

| 4 | 5 | 6 | 7 | 8 | 9 | 10 | 11 | 12 | 13 |



4A

MBP-Rio1 +
Nob1 + Pno1
+ AMPPNP

MBP-Rio1 +
Nob1 + Pno1
+ ADP

In FT W E X X X X In FT W E X

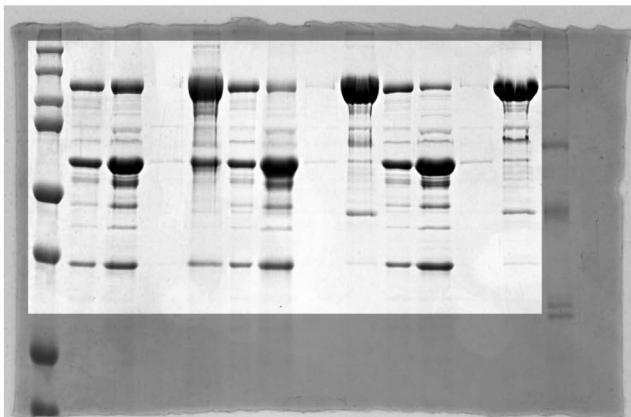
kDa
250
150
100
75
50
37

MBP-Rio1

Nob1

*

Pno1



4B

Gal::Pno1; Gal::Rio1 + TAP-Pno1

Rio1
 Rio1-D244A
 Rio1-D261A
 ATP
 ADP
 AMPPNP

-	-
+	-
-	+
+	+
-	-
-	-

Ladder

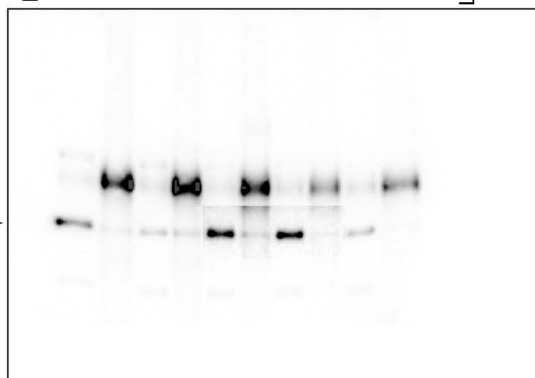
X X X X B R B R X X X X Ladder

Ladder

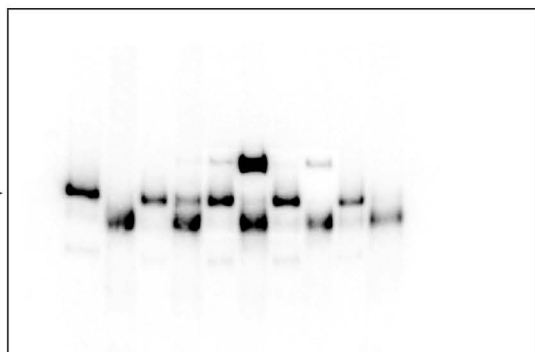
kDa

— 150
 — 100
 — 75
 — 50
 — 37

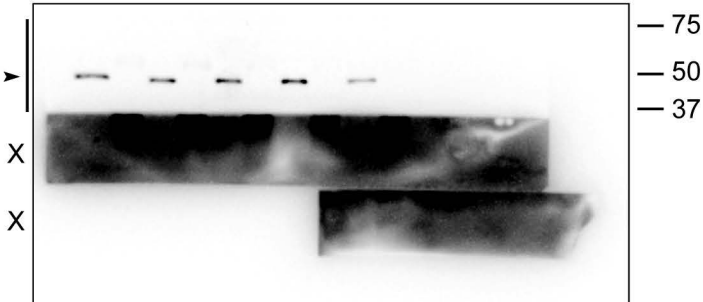
Pno1 ▶



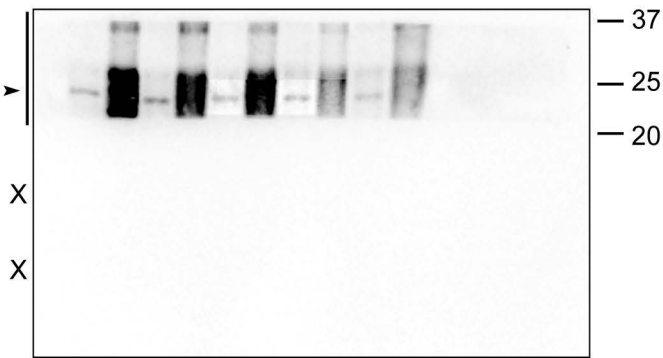
Nob1 ▶



Rpl3 ▶



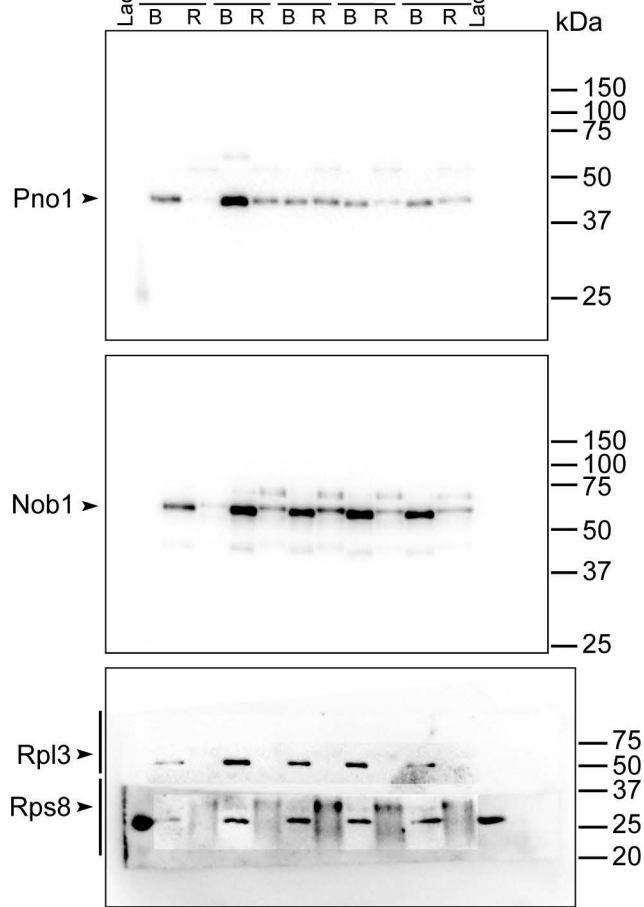
Rps8 ▶



4B

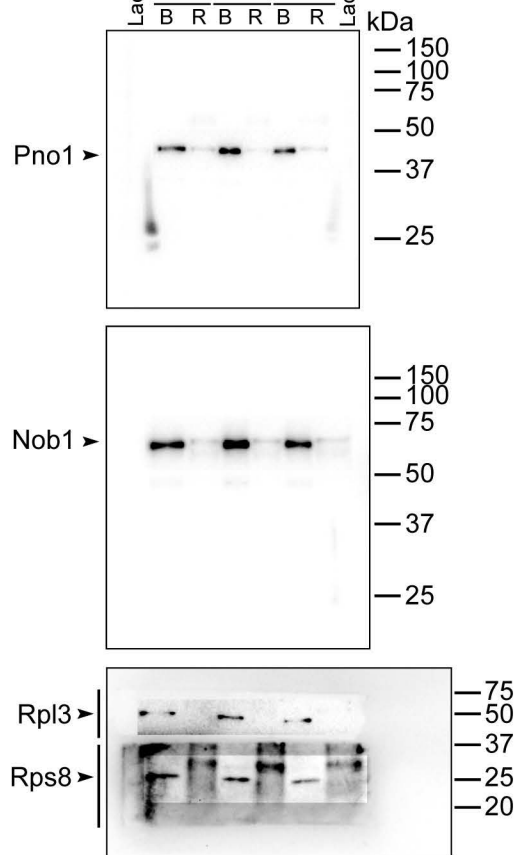
Gal::Pno1; Gal::Rio1 + TAP-Pno1

Rio1	-	+	+	+	+
Rio1-D244A	-	-	-	-	-
Rio1-D261A	-	-	-	-	-
ATP	-	-	+	-	-
ADP	-	-	-	+	-
AMPPNP	-	-	-	-	+



Gal::Pno1; Gal::Rio1 + TAP-Pno1

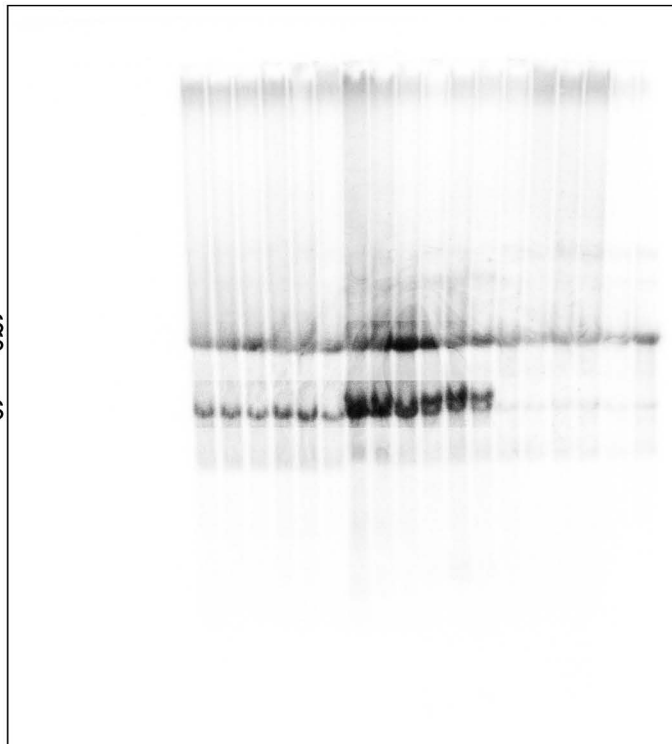
Rio1	-	-	-
Rio1-D244A	-	-	-
Rio1-D261A	-	-	-
ATP	+	-	-
ADP	-	+	-
AMPPNP	-	-	+



4E

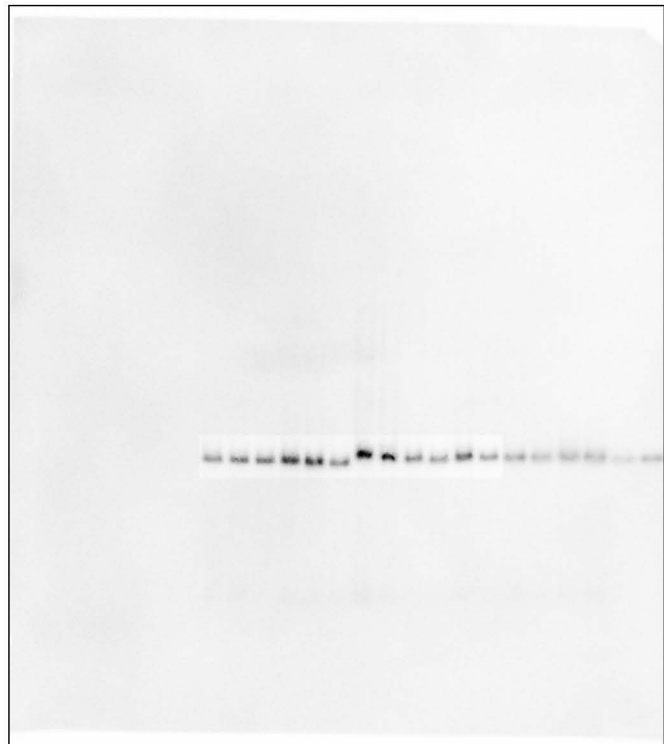
Gal::Pno1; Gal::Rio1
+ Pno1-KKKF + Pno1
+ Rio1 + e.v. + Rio1 + e.v. X

20S
18S
25S



Gal::Pno1; Gal::Rio1
+ Pno1-KKKF + Pno1
+ Rio1 + e.v. + Rio1 + e.v. X

U2



4E

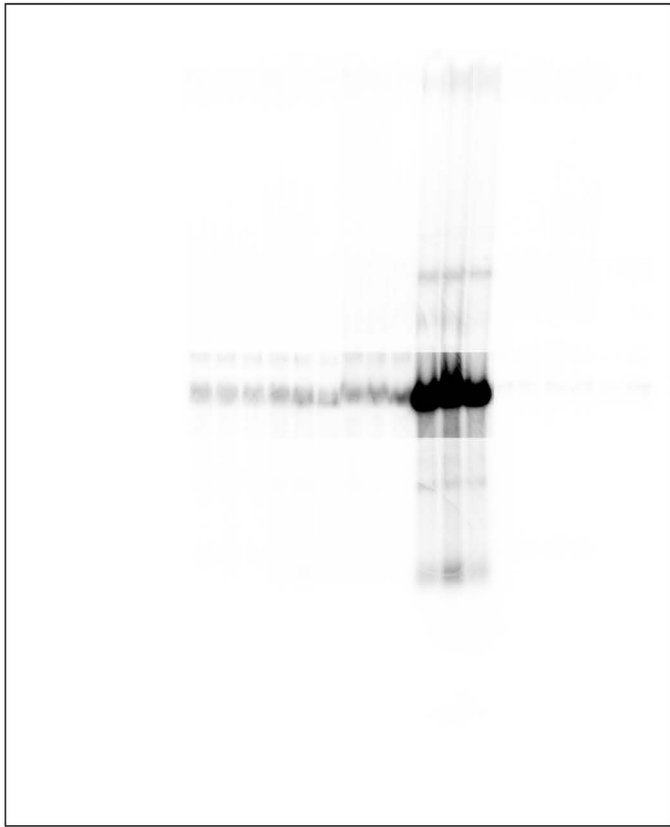
Gal::Pno1; Gal::Rio1
+ Pno1-KKKF + Pno1
+ Rio1+ e.v. + Rio1+ e.v. X

20S



Gal::Pno1; Gal::Rio1
+ Pno1-KKKF + Pno1
+ Rio1+ e.v. + Rio1+ e.v. X

20S



4F Pno1 + e.v.

X

| 2 | 3 | 4 | 5 | 6 | 7 | 8 | 9 | 10 | 11 | 12 | 13 |

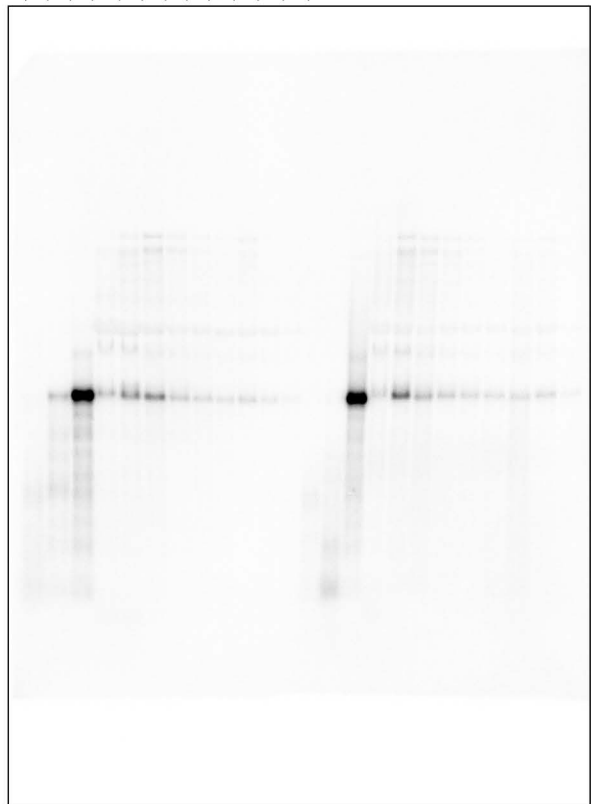
20S



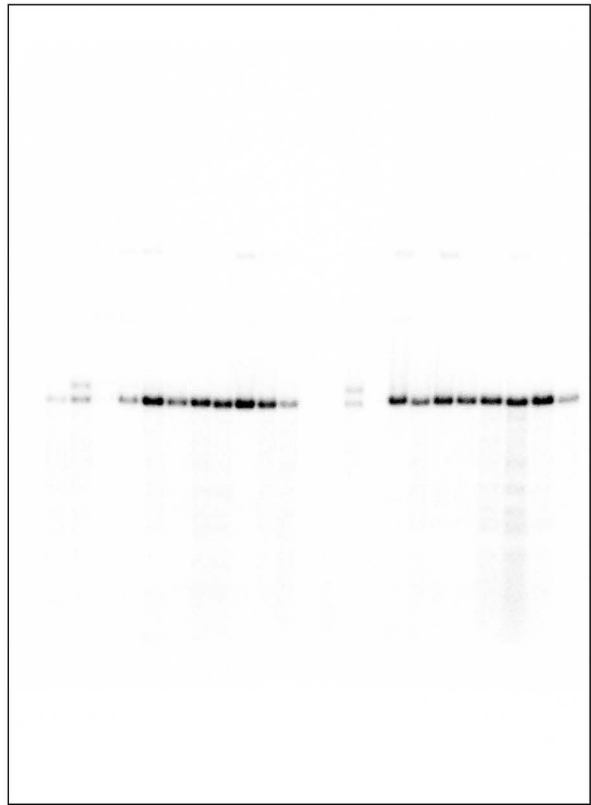
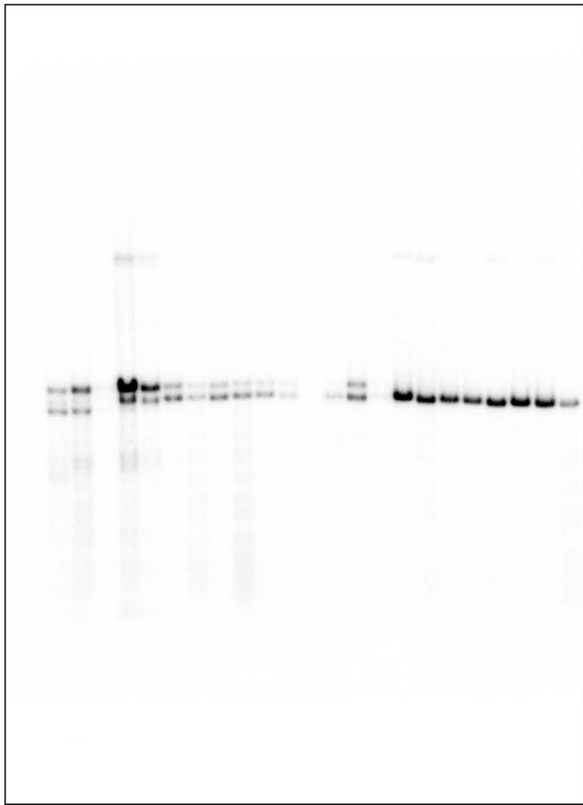
4G Pno1-KKKF + e.v.

X

| 2 | 3 | 4 | 5 | 6 | 7 | 8 | 9 | 10 | 11 | 12 | 13 |



20S
18S

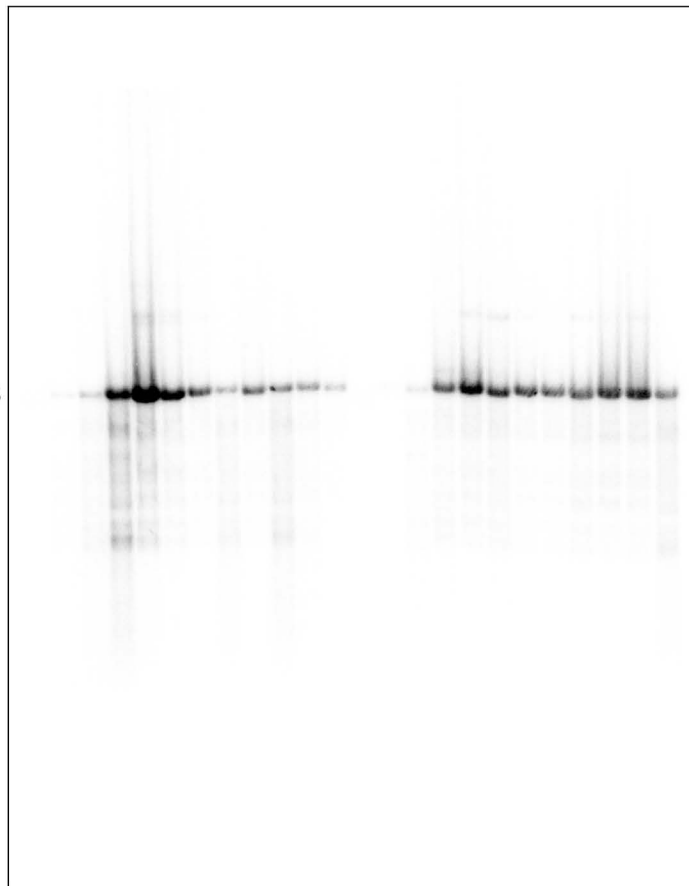


4F Pno1 + e.v.

| 2 | 3 | 4 | 5 | 6 | 7 | 8 | 9 | 10 | 11 | 12 | 13 |

X

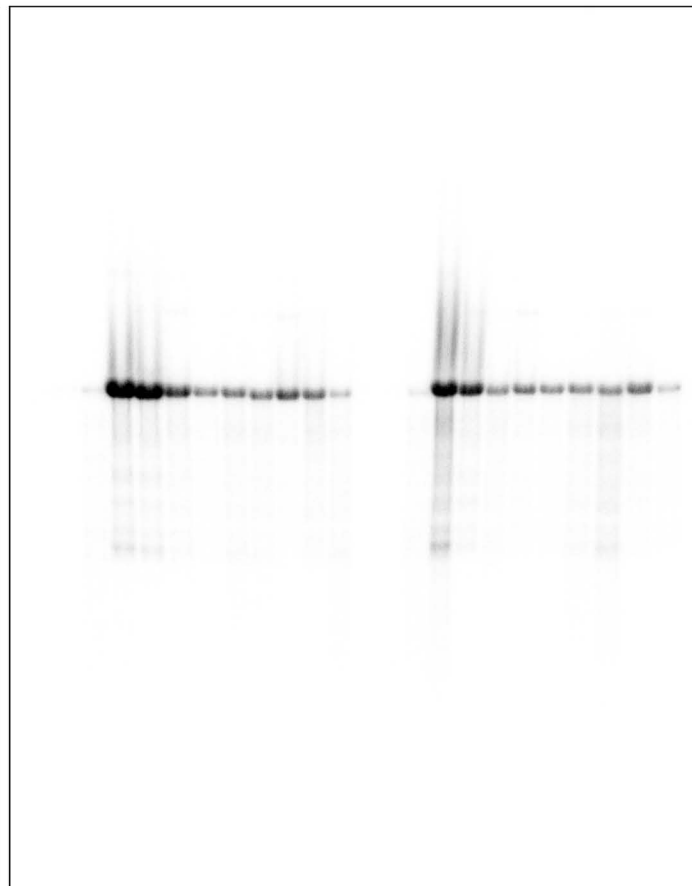
25S



4G Pno1-KKKF + e.v.

| 2 | 3 | 4 | 5 | 6 | 7 | 8 | 9 | 10 | 11 | 12 | 13 |

X



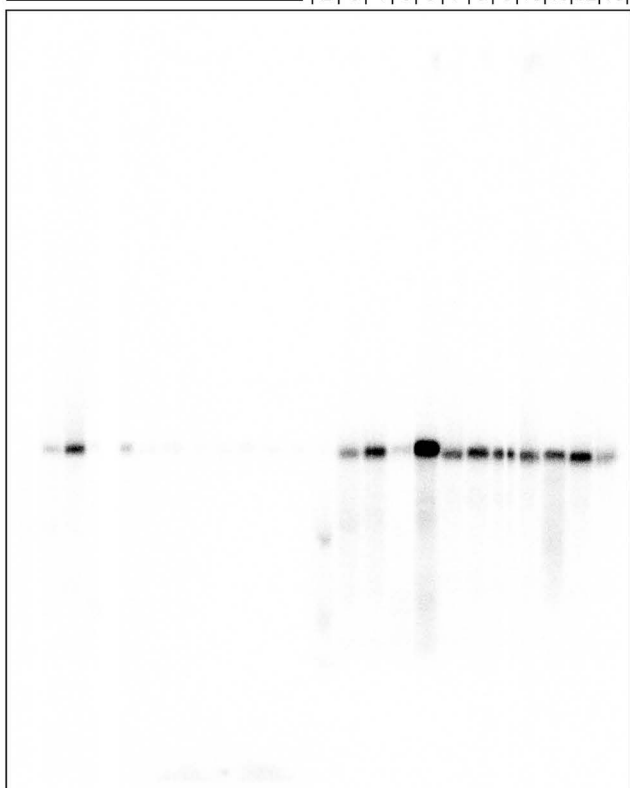
5A

X

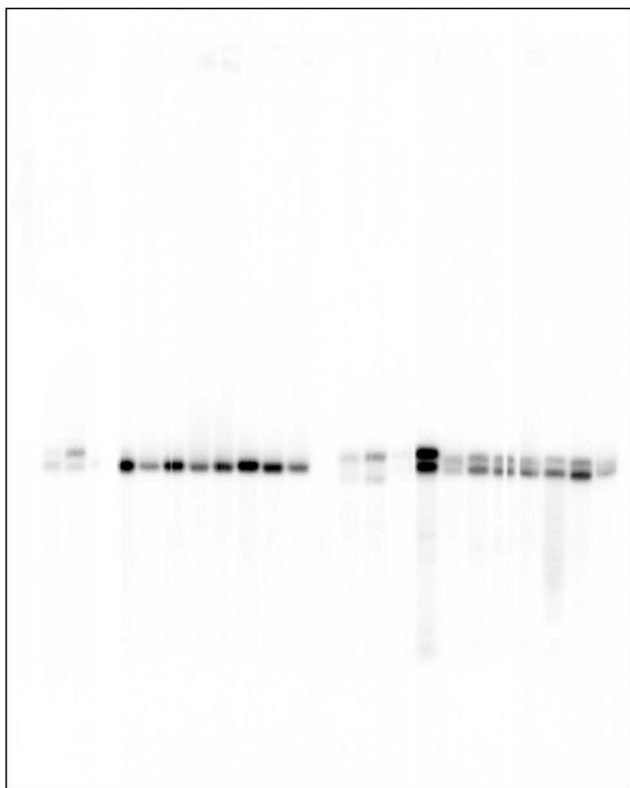
Nob1-363

| 2 | 3 | 4 | 5 | 6 | 7 | 8 | 9 | 10 | 11 | 12 | 13 |

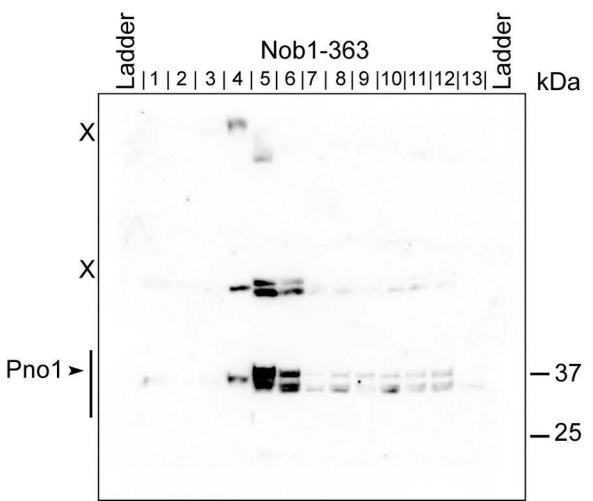
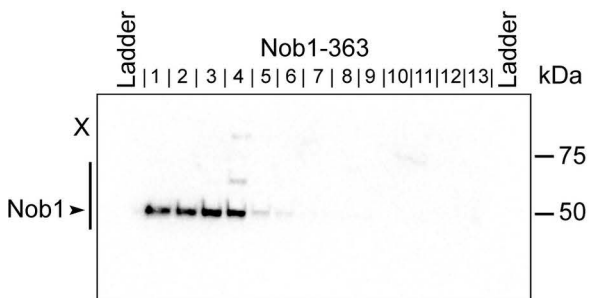
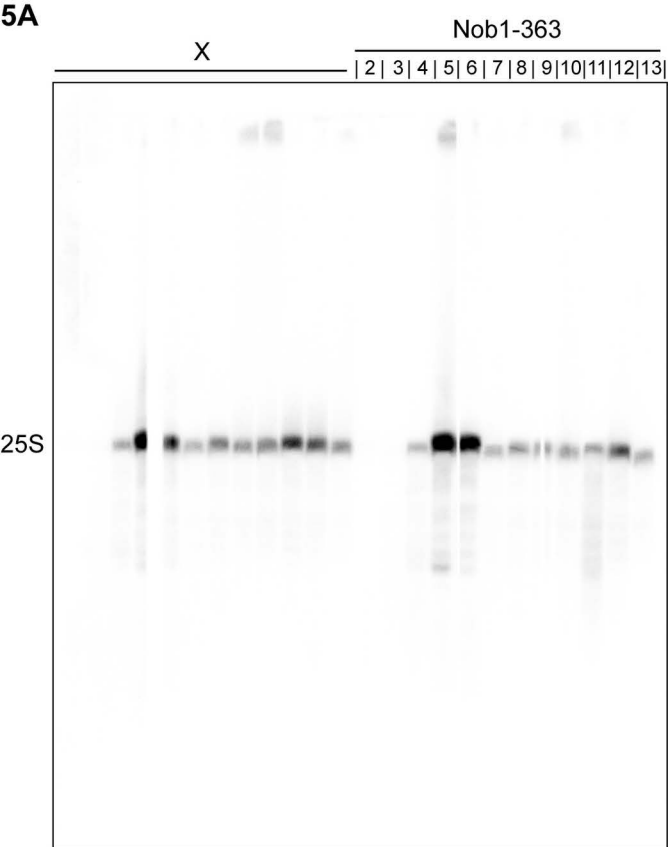
20S



20S
18S



5A

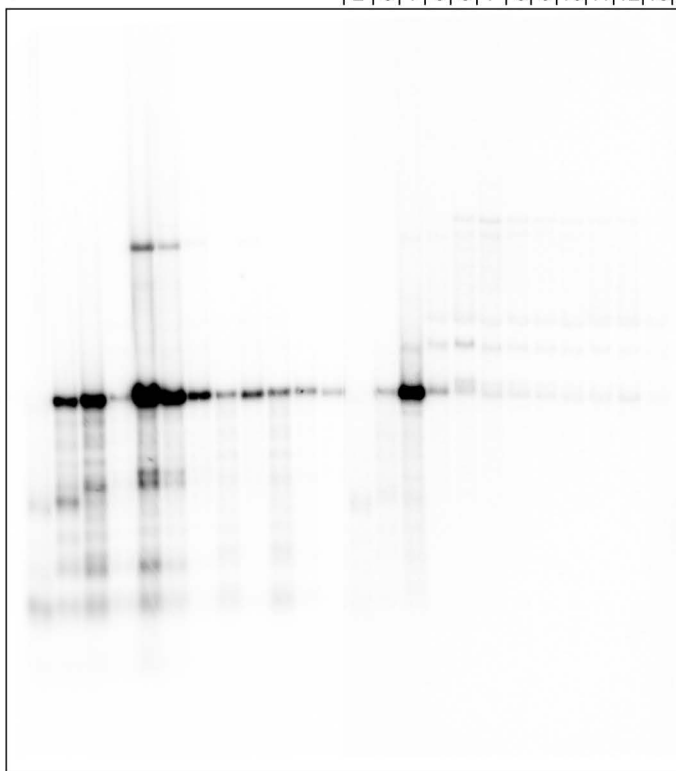


X

5B Pno1

| 2 | 3 | 4 | 5 | 6 | 7 | 8 | 9 | 10 | 11 | 12 | 13 |

20S



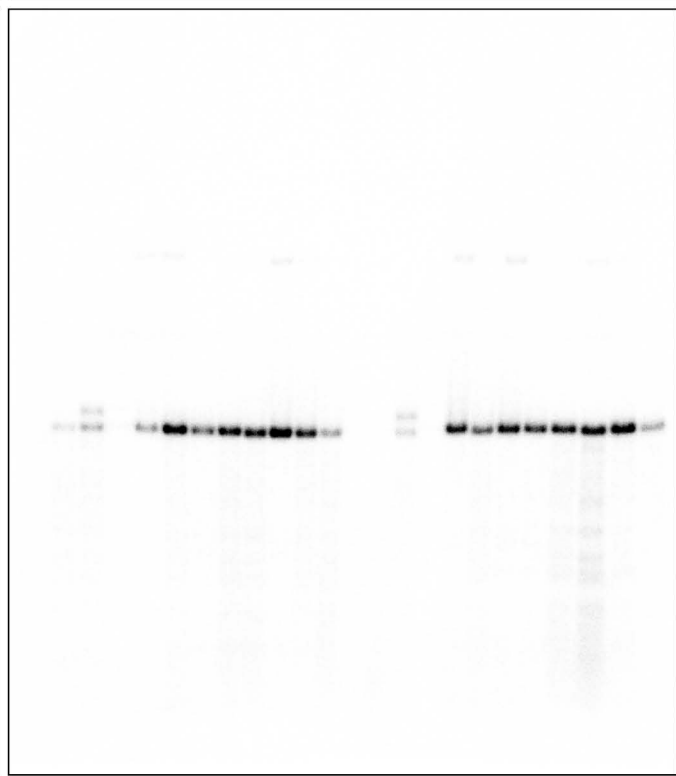
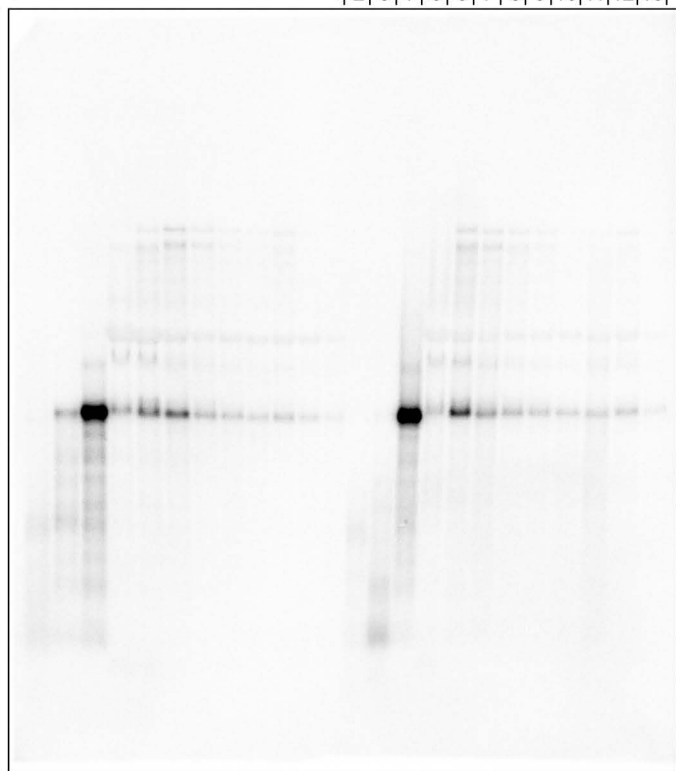
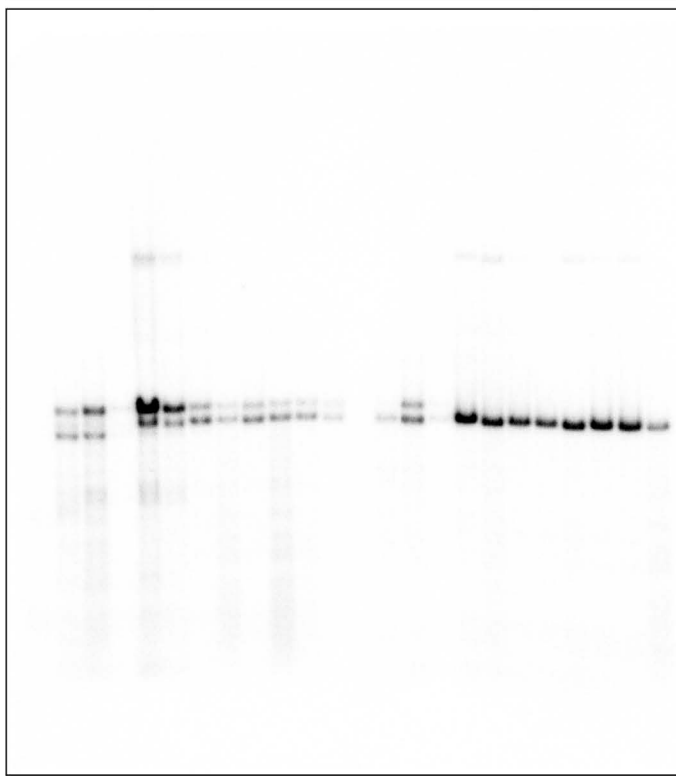
X

5C Pno1-KKKF

| 2 | 3 | 4 | 5 | 6 | 7 | 8 | 9 | 10 | 11 | 12 | 13 |

20S

18S

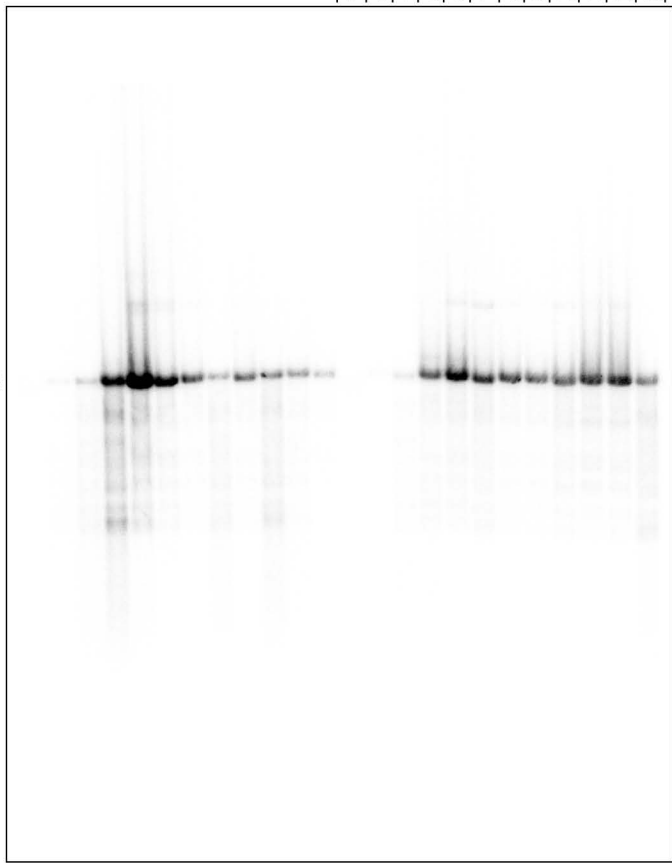


X

| 2 | 3 | 4 | 5 | 6 | 7 | 8 | 9 | 10 | 11 | 12 | 13 |

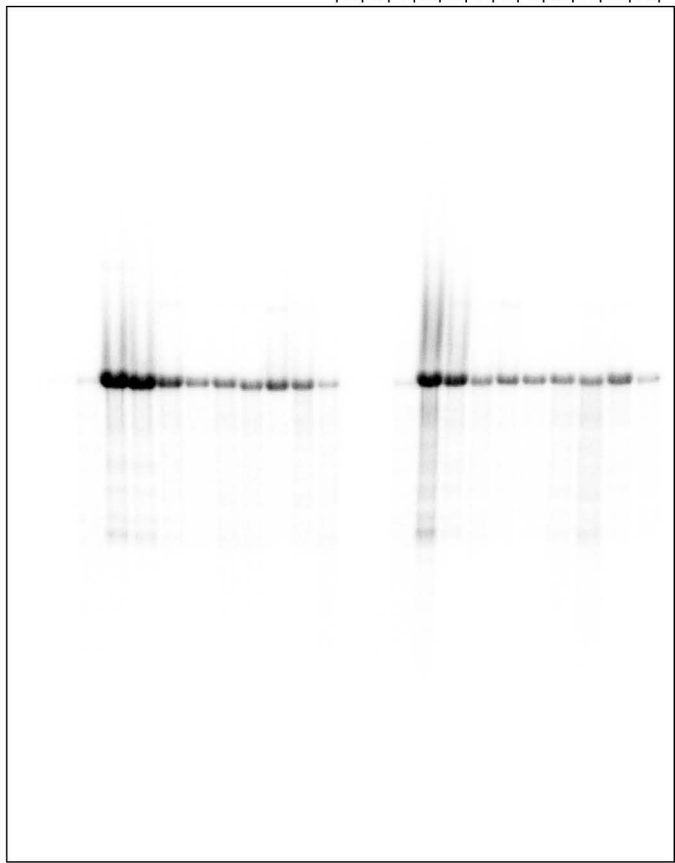
5B Pno1

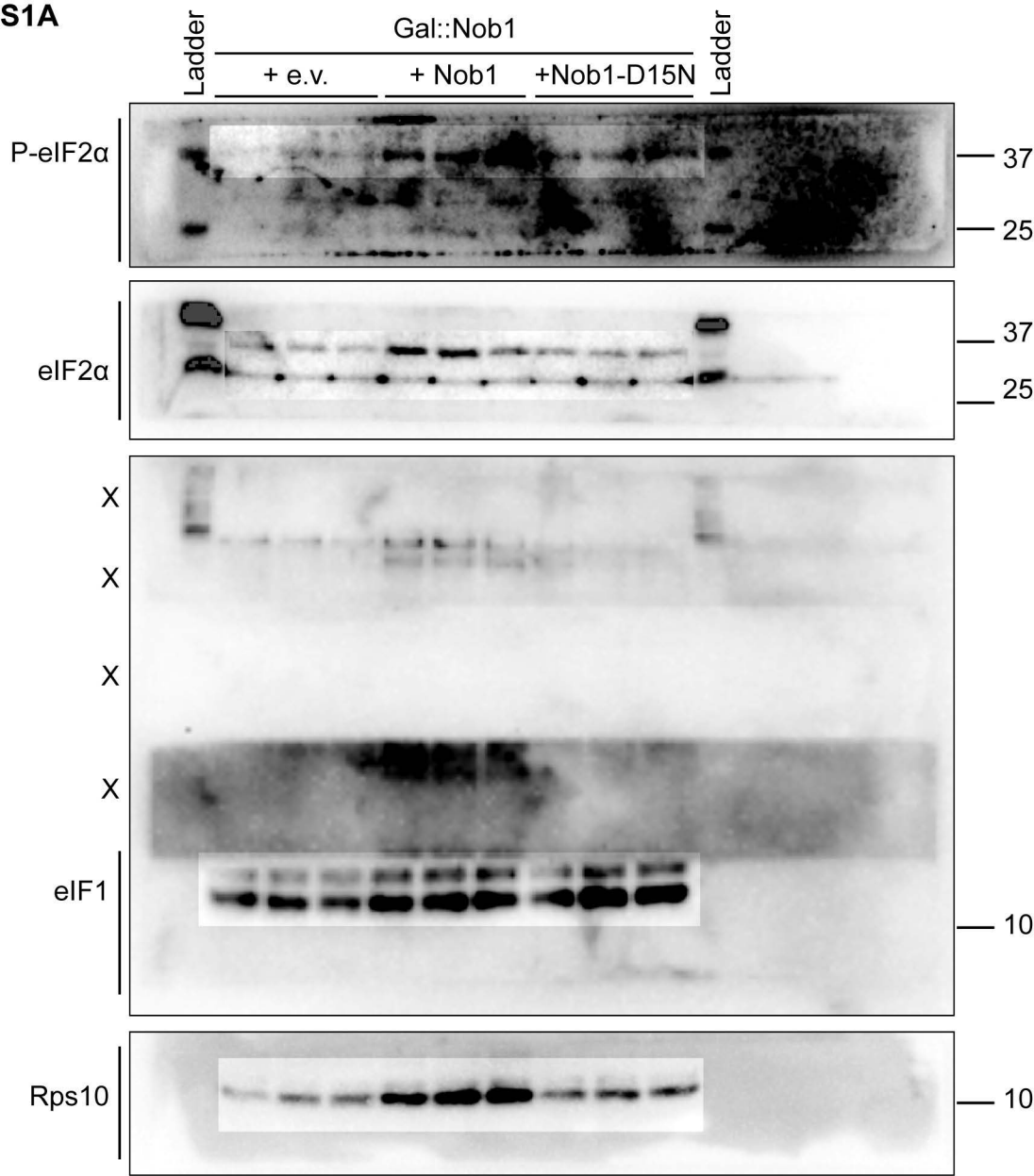
25S



X

| 2 | 3 | 4 | 5 | 6 | 7 | 8 | 9 | 10 | 11 | 12 | 13 |

5C Pno1-KKKF

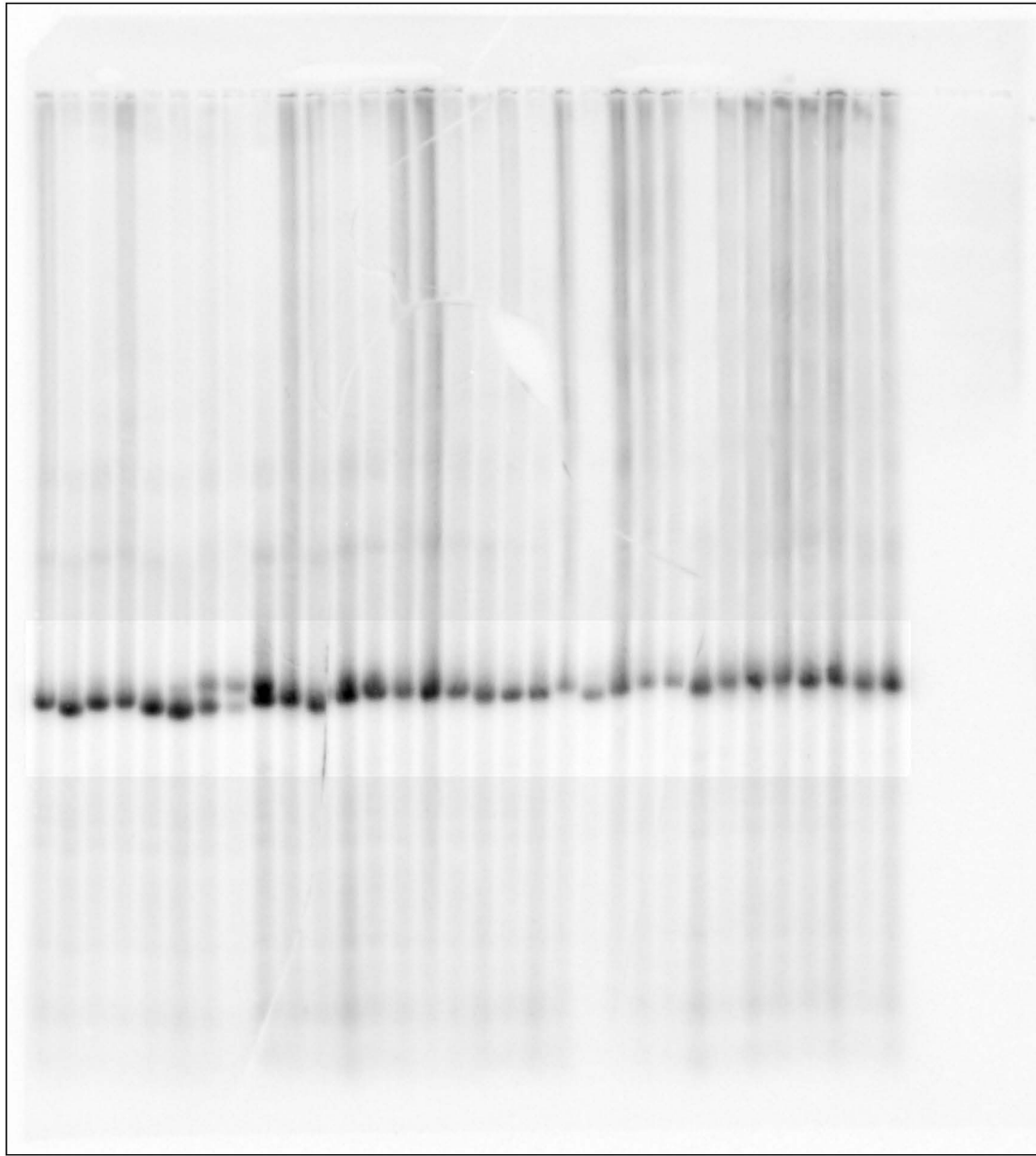
S1A

S1CGal::*Nob1*WT + *Nob1*-D15N

WT + e.v.

Hours
in media

0 2 4 6 8 10 12 16 X X X X X X X X 0 2 4 6 8 10 12 16 0 2 4 6 8 10 12 16

20S
18S

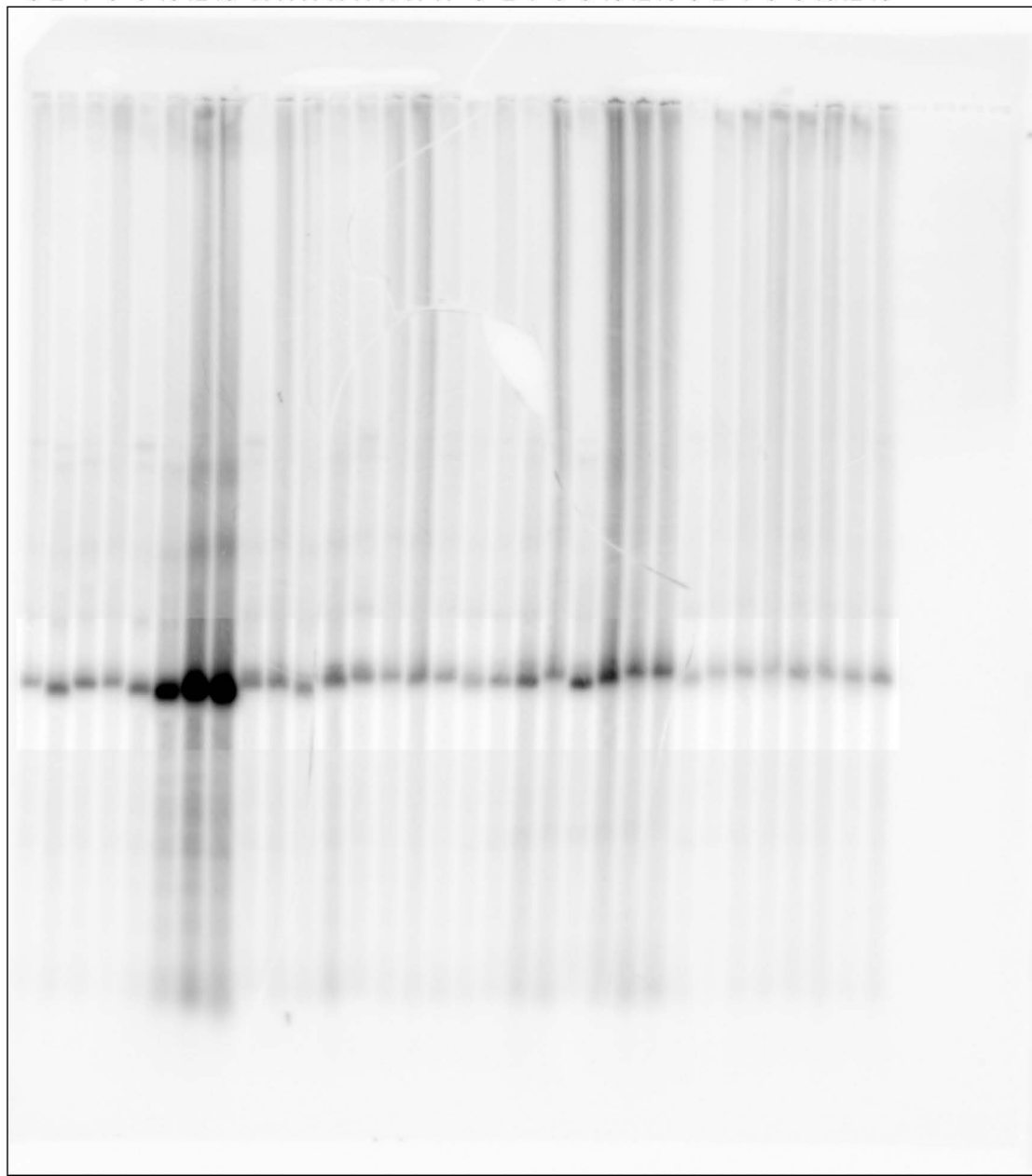
S1CGal::*Nob1*WT + *Nob1*-D15N

WT + e.v.

Hours
in media

0 2 4 6 8 10 12 16 X X X X X X X X 0 2 4 6 8 10 12 16 0 2 4 6 8 10 12 16

20S



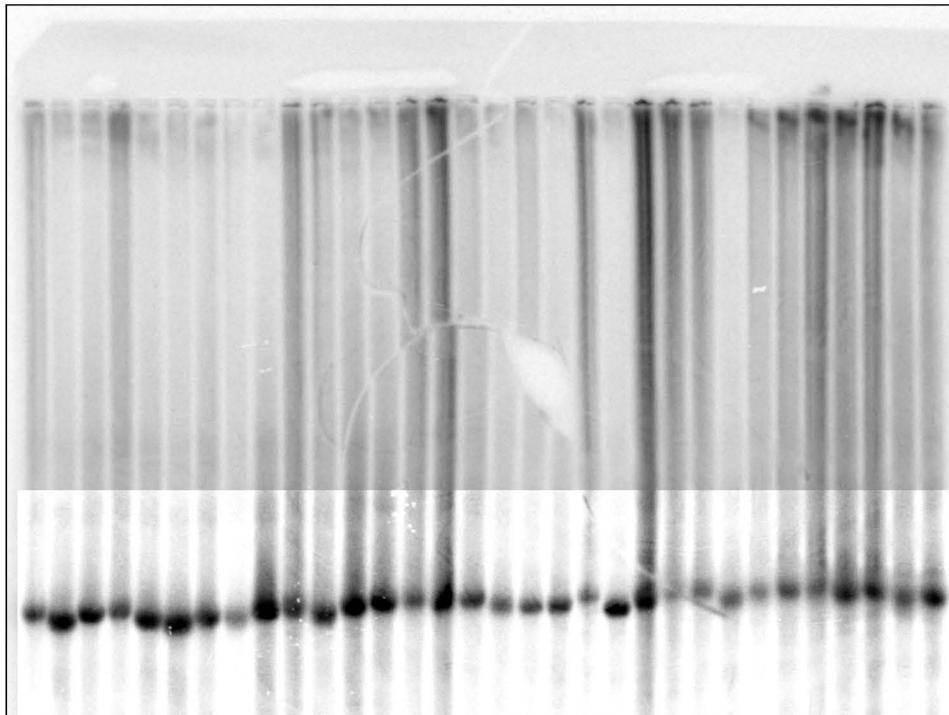
S1CGal::*Nob1*WT + *Nob1*-D15N

WT + e.v.

Hours
in media

0 2 4 6 8 10 12 16 X X X X X X X X 0 2 4 6 8 10 12 16 0 2 4 6 8 10 12 16

25S



S1C

Gal::Nob1

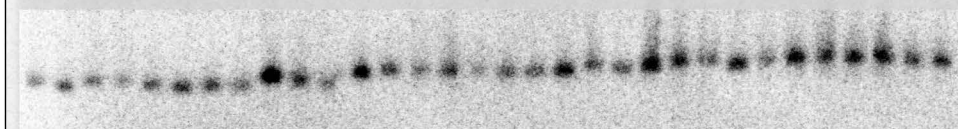
WT + Nob1-D15N

WT + e.v.

Hours
in media

0 2 4 6 8 10 12 16 X X X X X X X X 0 2 4 6 8 10 12 16 0 2 4 6 8 10 12 16

U2

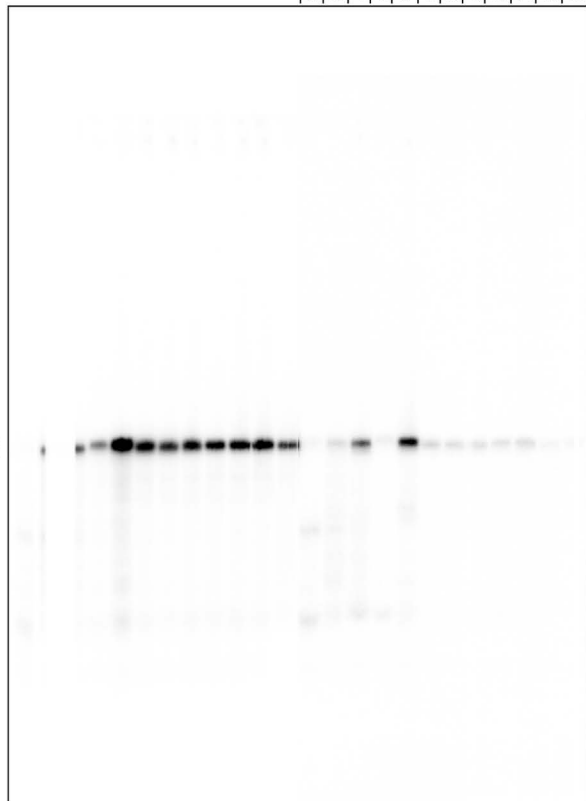


S1D

X

Gal::Rio1

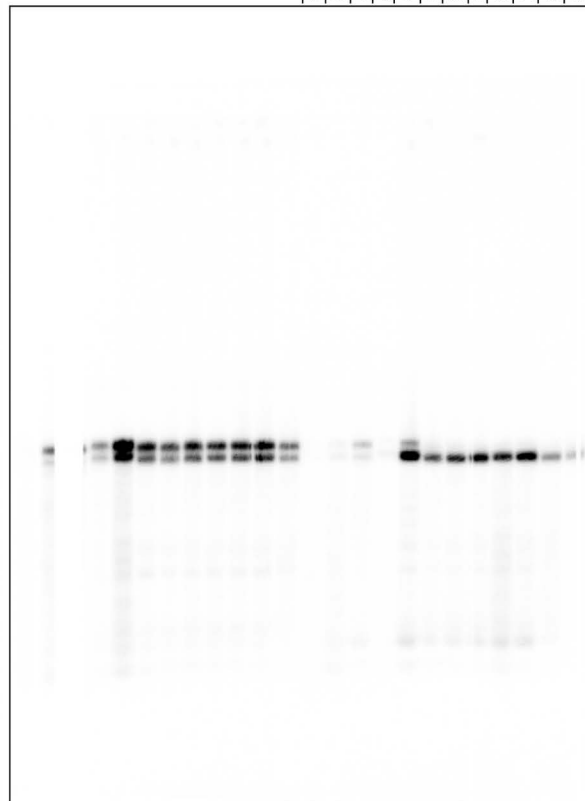
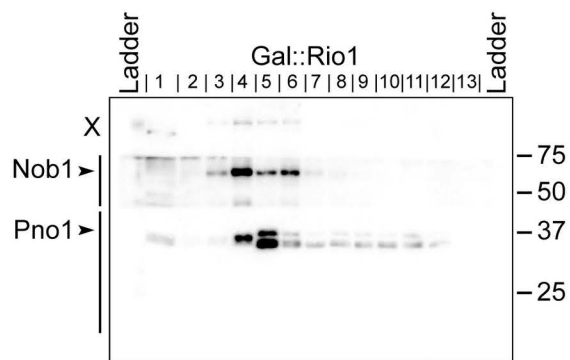
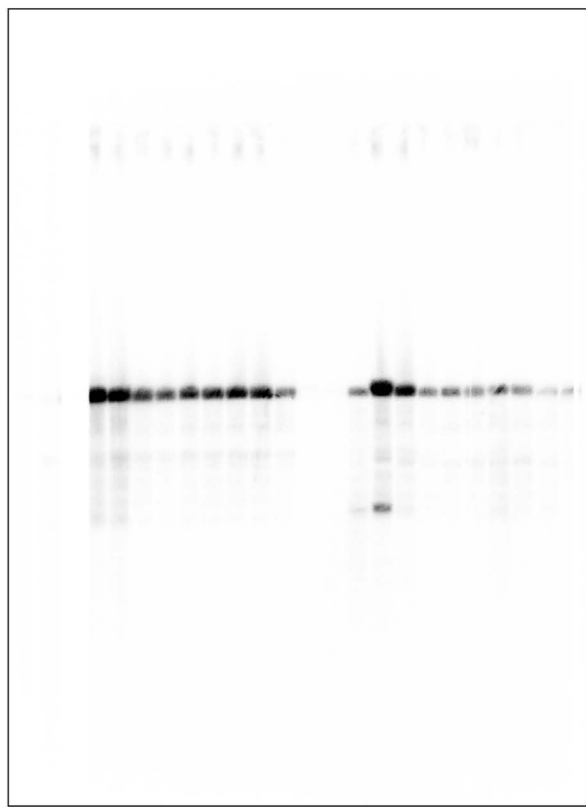
| 2 | 3 | 4 | 5 | 6 | 7 | 8 | 9 | 10 | 11 | 12 | 13 |



X

Gal::Rio1

| 2 | 3 | 4 | 5 | 6 | 7 | 8 | 9 | 10 | 11 | 12 | 13 |

20S
18S

Nob1

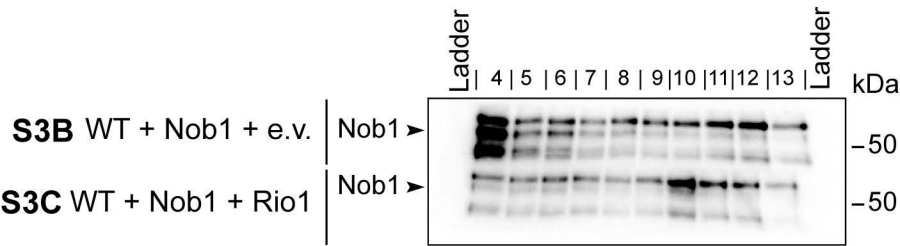
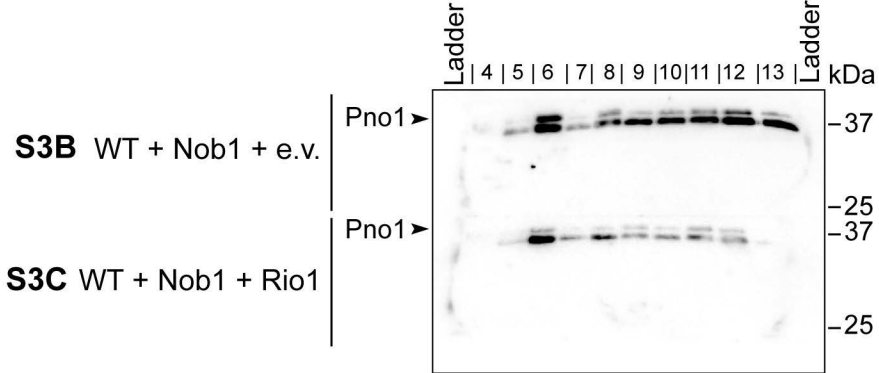
Pno1

-75

-50

-37

-25



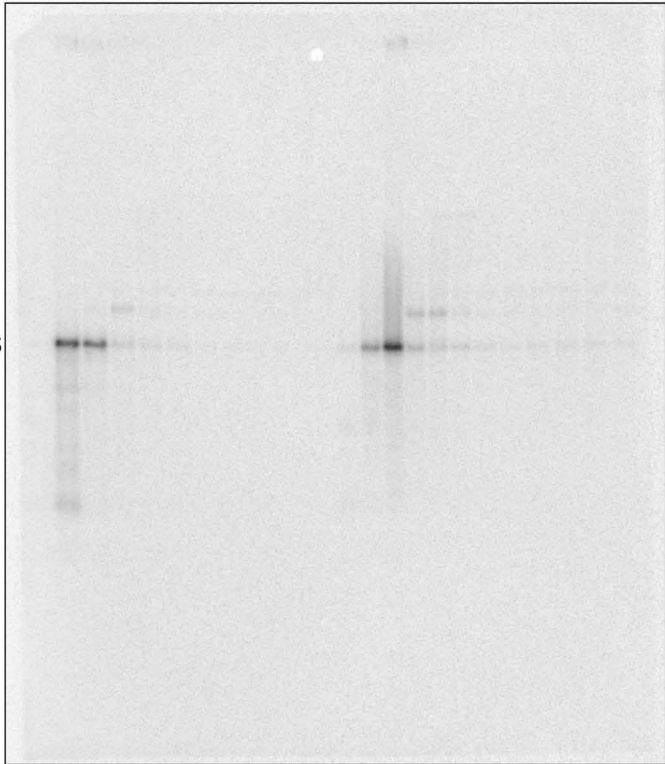
S3B**S3C**

WT + Nob1 + e.v.

WT + Nob1 + Rio1

| 2 | 3 | 4 | 5 | 6 | 7 | 8 | 9 | 10 | 11 | 12 | 13 |

| 2 | 3 | 4 | 5 | 6 | 7 | 8 | 9 | 10 | 11 | 12 | 13 |

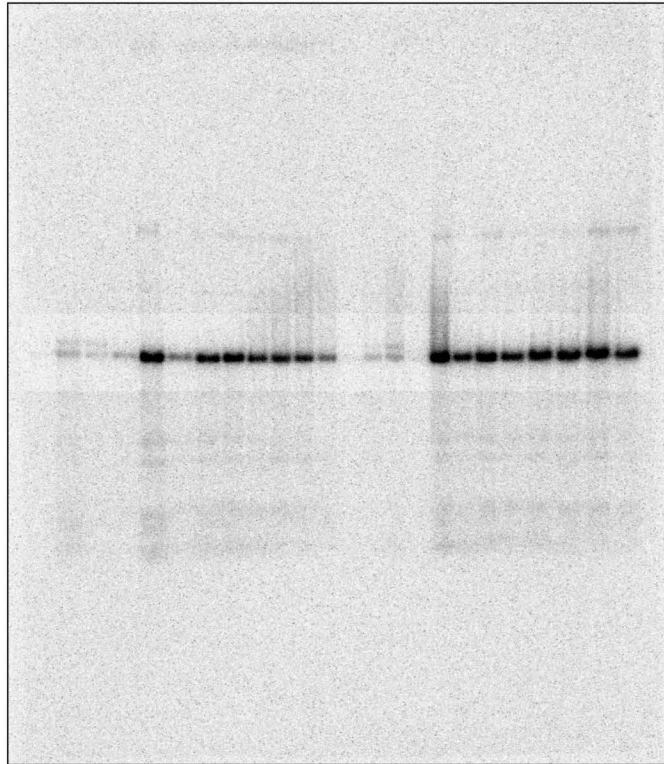
**S3B****S3C**

WT + Nob1 + e.v.

WT + Nob1 + Rio1

| 2 | 3 | 4 | 5 | 6 | 7 | 8 | 9 | 10 | 11 | 12 | 13 |

| 2 | 3 | 4 | 5 | 6 | 7 | 8 | 9 | 10 | 11 | 12 | 13 |



25S

