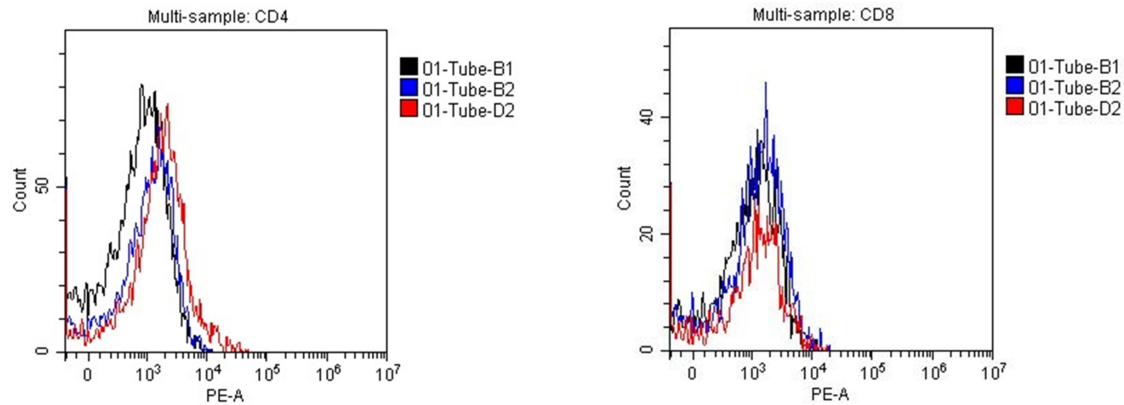


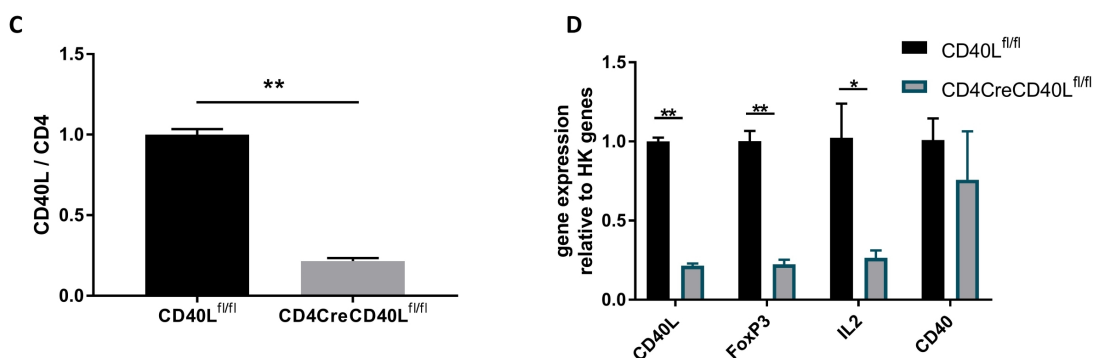
# Supplemental Figures



**Figure S1. CD40L depletion analysed by flow cytometry. (A)** CD40L expression on CD4 cells in PE, Tube-B1; unstimulated CD40L<sup>fl/fl</sup> WT, Tube-B2; 24 h stimulated CD4CreCD40L<sup>fl/fl</sup>, Tube-D2; 24 h stimulated CD40L<sup>fl/fl</sup> WT. **(B)** CD40L expression on CD8 cells in PE, Tube-B1; unstimulated CD40L<sup>fl/fl</sup> WT, Tube-B2; 24 h stimulated CD4CreCD40L<sup>fl/fl</sup>, Tube-D2; 24 h stimulated CD40L<sup>fl/fl</sup> WT.

CD4	Blanco Mean MFI	Stim 1	Stim 2	Average Stim - Blanco Mean	Average Cre vs WT	Knockout %
A	987,9	1567,6	1442,6	439,53		
B	1058,1	1409,3	1538,7	408,43		
C	1150,7	1408,8	1354,2	315,93	387,97	
D	1535,3	2581	2815,4	1632,63		
E	1552,6					
F	1384,5	3015,2	2613,6	1748,83	1690,733	<b>77,05</b>

**Table S1. CD40L depletion analysed by flow cytometry MFI mean.** Samples A-C are CD4CreCD40L<sup>fl/fl</sup> and samples D-F are CD40L<sup>fl/fl</sup> WT. Cells were unstimulated (Blanco) or stimulated in duplo (Stim1,2) for 24 h. and analysed for CD40L expression by flow-cytometry. Average blanco measurements (Cre) were deducted from the stimulated average, and CD4CreCD40L<sup>fl/fl</sup> vs WT were compared for the depletion efficiency.



**Figure S1C/D. CD40L deletion measured by mRNA analysis. (C)** mRNA analysis of unstimulated CD4 cells show a 79% decrease in expression of CD40L. **(D)** mRNA expression of inflammatory markers in unstimulated CD4 cells, cyclo-a is used as the house keeping gene. Data is presented as n=3 mice/group, with mean ± SEM, \* = p<0.05, \*\* = p<0.01.