

Figure S2. EpAT metabolic markers are similar between T cell CD40L deficient and WT mice. (A) mRNA expression relative to housekeeping (HK) genes. **(B)** Leptin concentration in plasma of SFD and HFD mice.

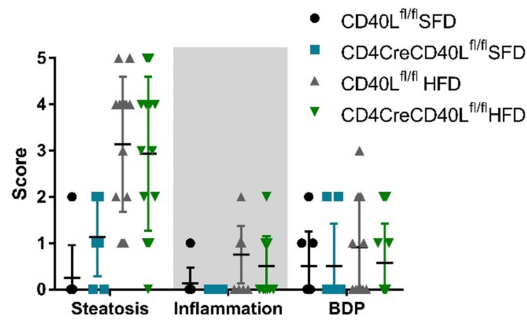


Figure S3. Hepatic steatosis and inflammation are scored similar for T cell CD40L deficient and WT mice. (A) Steatosis, inflammation and Bile Duct Proliferation (BDP) of the liver scored 0-5 for all groups.

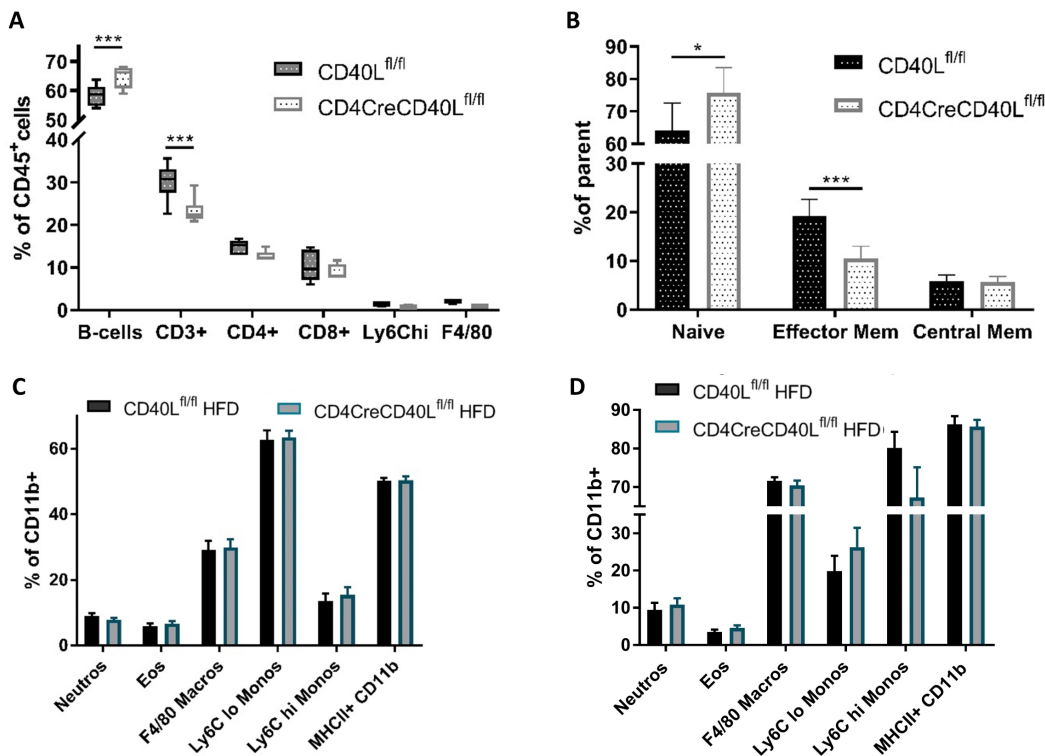


Figure S4. Flow cytometric analysis of lymphoid and myeloid populations for CD4CreCD40L^{fl/fl} and WT mice. (A) Flow cytometric analysis of CD45⁺ subsets in spleen of SFD mice. **(B)** Distribution of CD4⁺ T cell subsets in spleen; CD62L⁺ CD44⁻ Naïve cells, CD62L⁺ CD44⁺ Central memory cells, and CD62L⁻ CD44⁺ Effector memory cells of SFD mice (n=6/group). **(C)** Flow cytometry analysis of CD11b⁺ neutrophils, eosinophils, macrophages, Ly6C⁻ lo and hi monocytes, and MHC-II⁺ activation in myeloid population of spleen and **(D)** EpAT of HFD fed T cell CD40L deficient and WT mice. Data is represented as HFD (n=14 and 15/group) and SFD (n=8/group), mean \pm SD. * = P<0.05, ** = P<0.01, *** = p<0.001