

## SUPPLEMENTAL MATERIAL

**Supplemental Table 1. Selected baseline characteristics comparing all CHDS mothers to mothers in the analysis sample**

	All CHDS Mothers N=15,528		Mothers in Analysis N=14,062	
<b>Characteristic at Baseline</b>	<b>N</b>	<b>%</b>	<b>N</b>	<b>%</b>
<b>Mother's Race/Ethnicity</b>				
White	10,194	67.0	9,334	67.6
African American	3,591	23.6	3,190	23.1
Hispanic	462	3.0	406	2.9
Asian	550	3.6	491	3.6
Multi-racial/Other	415	2.7	382	2.8
<b>Mother's Age (quartiles)</b>				
≤22 years	4,019	26.2	3,678	26.5
23-26 years	3,823	24.9	3,525	25.4
27-31 years	3,667	23.9	3,322	23.9
30+ years	3,833	25.0	3,382	24.3
<b>Mother's Parity</b>				
Primiparous	5,313	33.9	4,757	33.8
Multiparous	10,176	66.13	9,305	66.2
<b>Marital Status</b>				
Married	11,600	92.4	10,717	92.4
Other	959	7.6	876	7.6
<b>Mother's Education</b>				
Less than High School	2,276	18.0	2,128	18.1
High School/Trade School	4,039	31.9	3,741	31.9
College	6,347	50.1	5,867	50.0
<b>Mother's Employment</b>				
Homemaker	6,593	54.7	6,166	55.0
Professional/Managerial	1,488	12.4	1,367	12.2
Secretarial/Clerical	2,974	24.7	2,764	24.6
Laborer (Housework/Factory)	929	7.7	855	7.6
Other	67	0.6	64	0.6
<b>Maternal BMI<sup>†</sup></b>				
<25 kg/m <sup>2</sup>	10,489	79.2	9,831	79.3
≥25 kg/m <sup>2</sup>	2,757	20.8	2,563	20.7
<b>Mother's Smoking</b>				
Never	5,664	47.1	5,300	47.3
Current	4,293	35.7	3,965	35.4
Past	2,078	17.3	1,943	17.3

<b>Mother's Coffee Consumption (quartiles)*</b>				
<1/2 cup per day	2,451	23.35	2,319	23.7
1/2-1 cup per day	2,244	21.37	2,101	21.4
2-3 cups per day	2,783	26.51	2,604	26.6
4+ cups per day	3,021	28.77	2,776	28.3
<b>Mother's Alcohol Consumption (quartiles)*</b>				
<1 drink per week <sup>†</sup>	4,653	44.3	4,358	44.5
1-2 drinks per week	3,708	35.3	3,475	35.4
3+ drinks per week	2,143	20.4	1,971	20.1
<b>Family Income (quartiles)*<sup>§</sup></b>				
<\$5,000	2,358	22.2	2,196	22.2
\$5,000-\$6,999	3,121	29.4	2,922	29.5
\$7,000-\$8,999	2,332	22.0	2,181	22.0
≥\$9,000	2,803	26.4	2,595	26.2
<b>Offspring Birthweight (quartiles)*</b>				
≤2,940 gms	3,744	25.6	3,456	24.8
2,941-3276 gms	3,807	26.0	3,633	26.1
3277-3584 gms	3,371	23.0	3,248	23.3
≥3585 gms	3,781	25.4	3,580	25.7
<b>Offspring Gestational Age (quartiles)*</b>				
≤38 weeks	4,514	29.5	3,593	25.6
39 weeks	2,948	19.2	2,833	20.2
40 weeks	3,362	21.9	3,260	23.2
≥41 weeks	4,505	29.4	4,376	32.1

---

\*Quartiles are based on the distribution of variables among all CHDS births. For birthweight and gestational age, quartile cutpoints were based on the distribution among liveborn births.

†Maternal body mass index (BMI) was calculated from the earliest measured weight in kilograms divided by height in meters squared. Weight was adjusted to compensate for variation in the timing of measurement by regressing weight on gestational age using the locally weighted scatterplot smoothing technique.

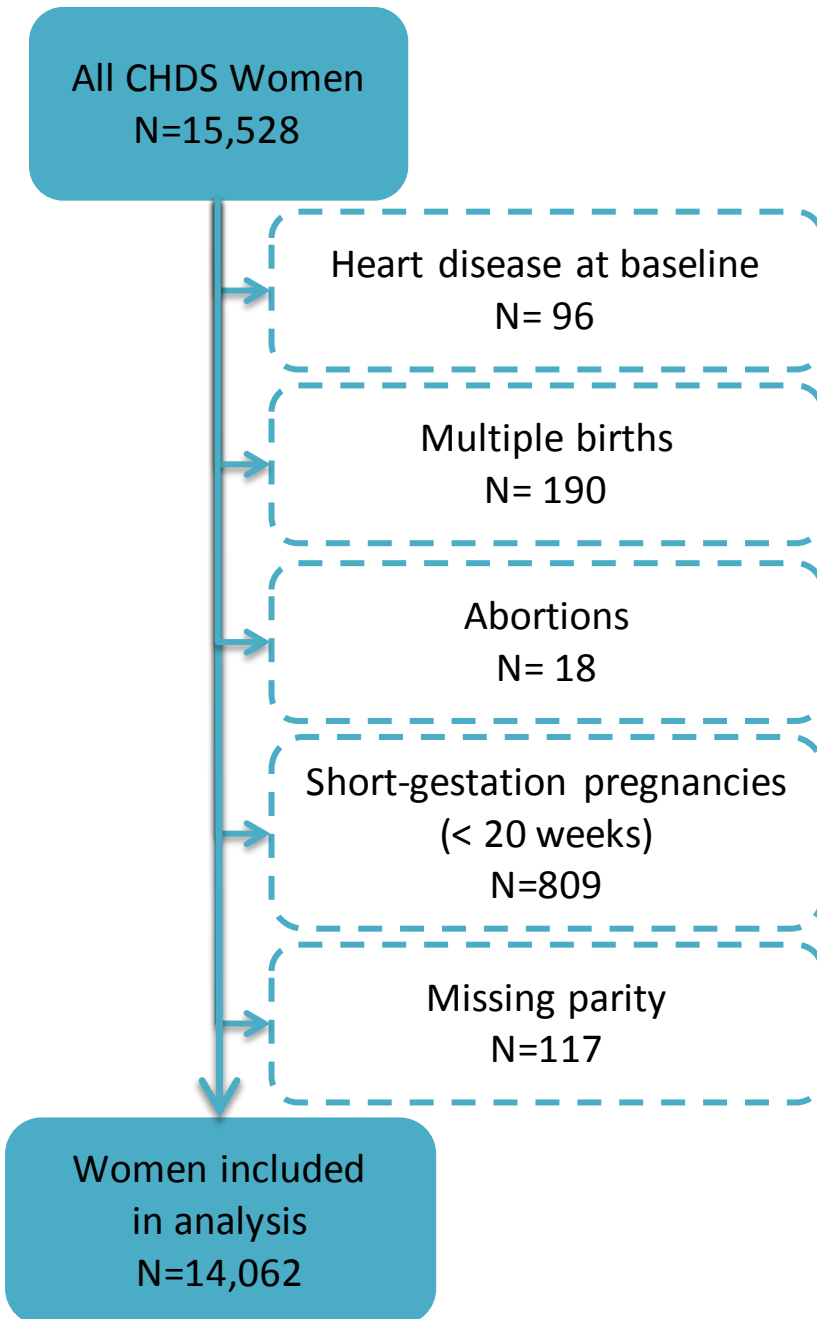
‡Due to clumping of data, quartiles 1 and 2 are combined.

§Median family income in Oakland, California in 1959 was \$6,303.00 according to the 1960 Bay Area Census.

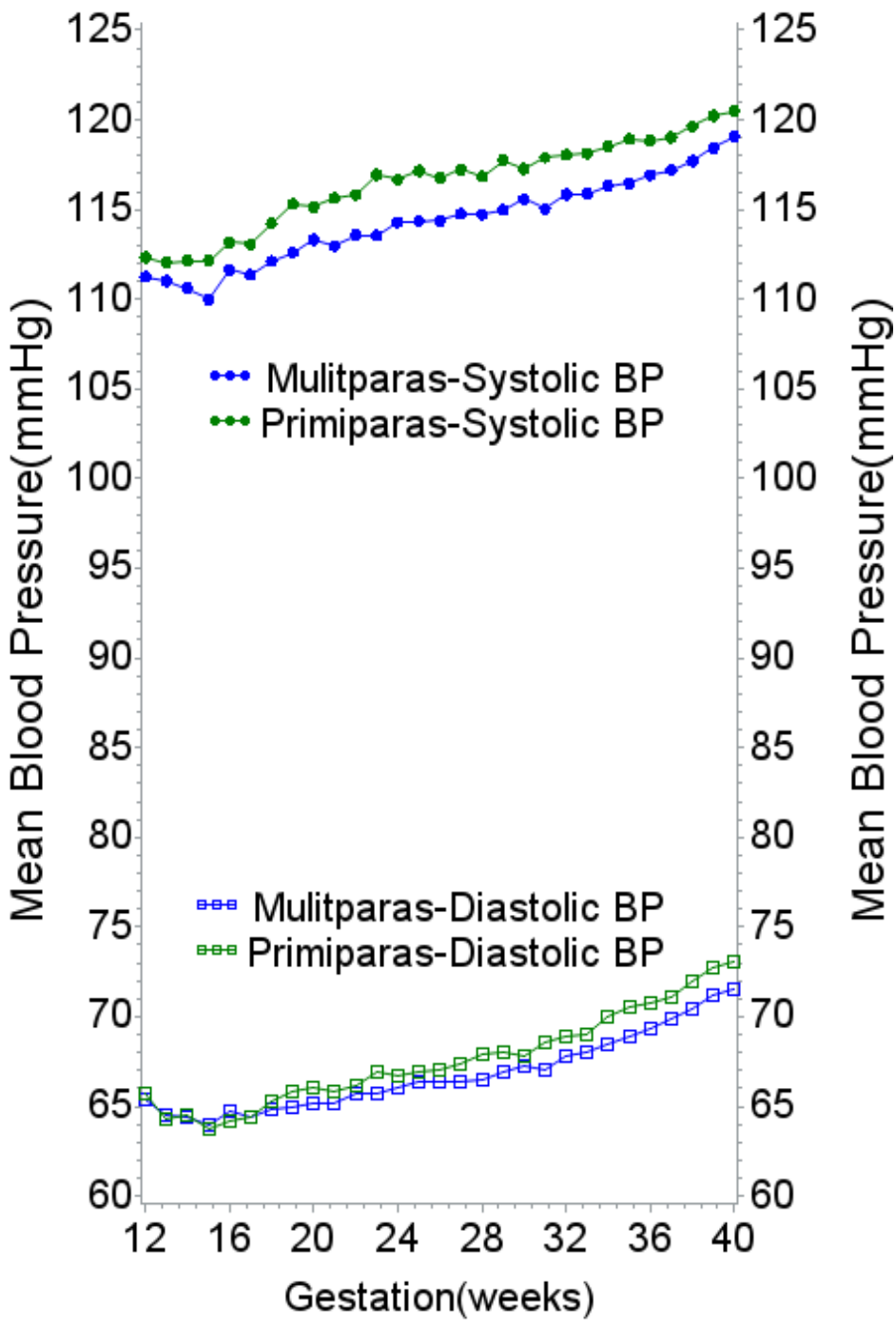
**Supplemental Table 2. Age-Adjusted Rates of CVD by Pregnancy Complication**

<b>Study Variable</b>	<b>Cases</b>	<b>Person-years</b>	<b>Incidence Rate per 100,000</b>	<b>95% Confidence Interval</b>
<b>Preexisting Hypertension*</b>				
Absent	327	444,147	72.4	64.7, 80.7
Present	40	9,480	288.9	194.8, 408.1
<b>Gestational hypertension*</b>				
Absent	311	397,158	76.5	68.2, 85.5
Present	56	56,469	94.7	71.4, 123.1
<b>Glycosuria*</b>				
Absent	355	443,006	78.0	70.1, 86.6
Present	4	1,886	282.3	65.6, 746.8
<b>Preterm delivery*</b>				
Absent	310	413,014	73.2	65.3, 81.9
Present	57	40,613	137.6	103.5, 179.1
<b>Hemoglobin decline*</b>				
Absent	135	220,791	59.7	50.1, 70.7
Present	25	21,987	110.5	71.2, 163.6
<b>Small for Gestational Age*</b>				
Absent	326	409,388	77.2	69.0, 86.0
Present	39	40,511	96.6	68.6, 132.1
<b>Pre-eclamptic Pregnancy*</b>				
Absent	342	441,134	75.6	67.8, 84.1
Present	25	12,493	192.3	122.9, 286.0
<b>Gestational Timing of Pre-eclampsia*</b>				
No Pre-eclampsia	342	441,134	75.6	67.8, 84.1
Pre-eclampsia After 34 weeks	20	11,307	179.1	64.8, 466.0
Pre-eclampsia Before 34 weeks	5	1,186	199.7	108.3, 278.1

\*Variables were recorded as observed or not observed in the analysis pregnancy. Number of events may not sum to total due to missing data.



Supplemental Figure 1. Consort Diagram of Analysis Sample



Supplemental Figure 2. Mean blood pressure levels by week of gestation and parity.