

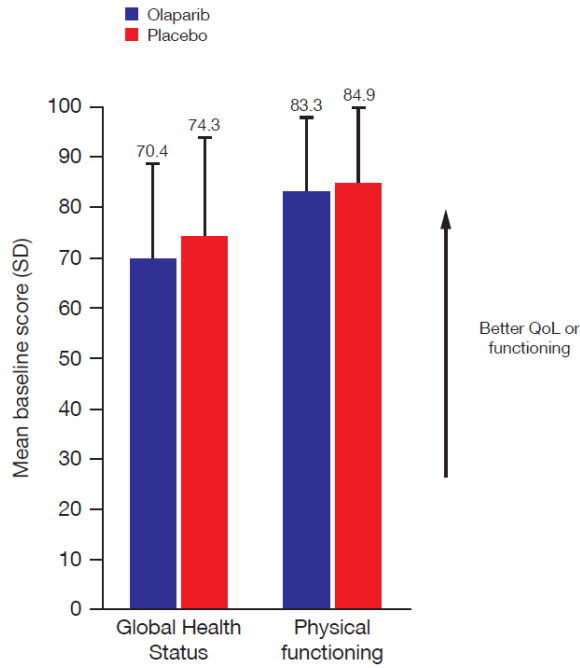
Supplementary material

Health-related quality of life in patients with a germline BRCA mutation and metastatic pancreatic cancer receiving maintenance olaparib

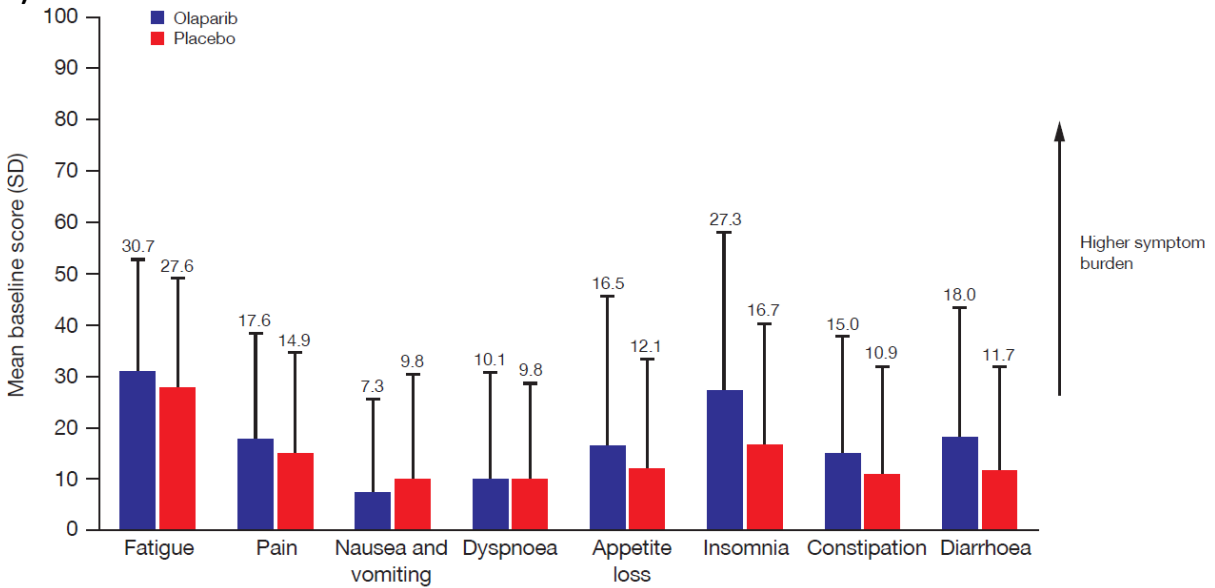
Pascal Hammel, Hedy L Kindler, Michele Reni, Eric Van Cutsem, Teresa Macarulla, Michael J Hall, Joon Oh Park, Daniel Hochhauser, Dirk Arnold, Do-Youn Oh, Anke Reinacher-Schick, Giampaolo Tortora, Hana Algül, Eileen M O'Reilly, David McGuinness, Karen Y Cui, Seongjung Joo, Hyun Kyoo Yoo, Nikunj Patel, Talia Golan, on behalf of the POLO Investigators

Supplementary Figure 1: Mean score at baseline for EORTC QLQ-C30 (A) Global Health Status and physical functioning and (B) symptom scales

(A)

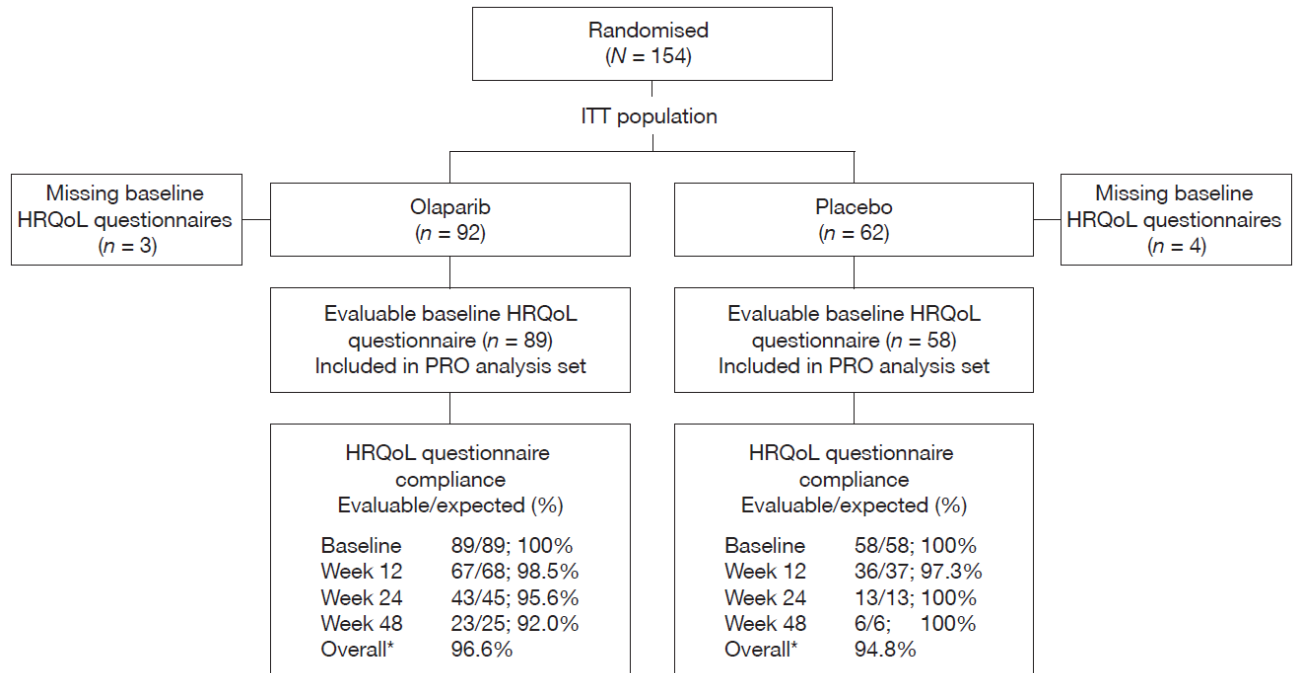


(B)



QoL, quality of life; SD, standard deviation

Supplementary Figure 2: Patient disposition and EORTC QLQ-30 questionnaire compliance rates



*Overall compliance defined as the number of patients with an evaluable baseline and ≥ 1 evaluable follow-up form, divided by the number of patients expected to have completed ≥ 1 baseline form. Percentages are based on the PRO analysis set. HRQoL, health related quality of life; PRO, patient reported outcomes