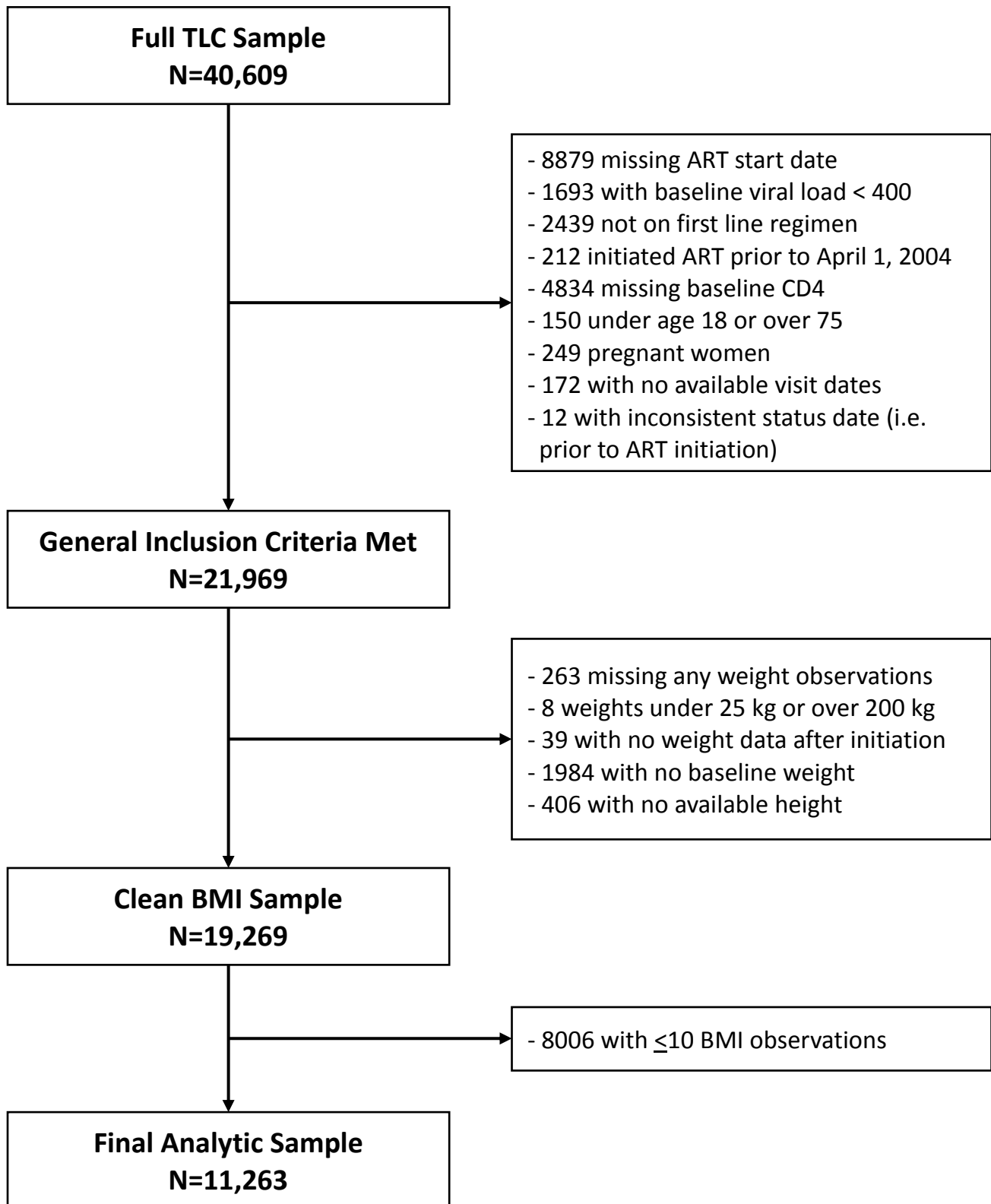
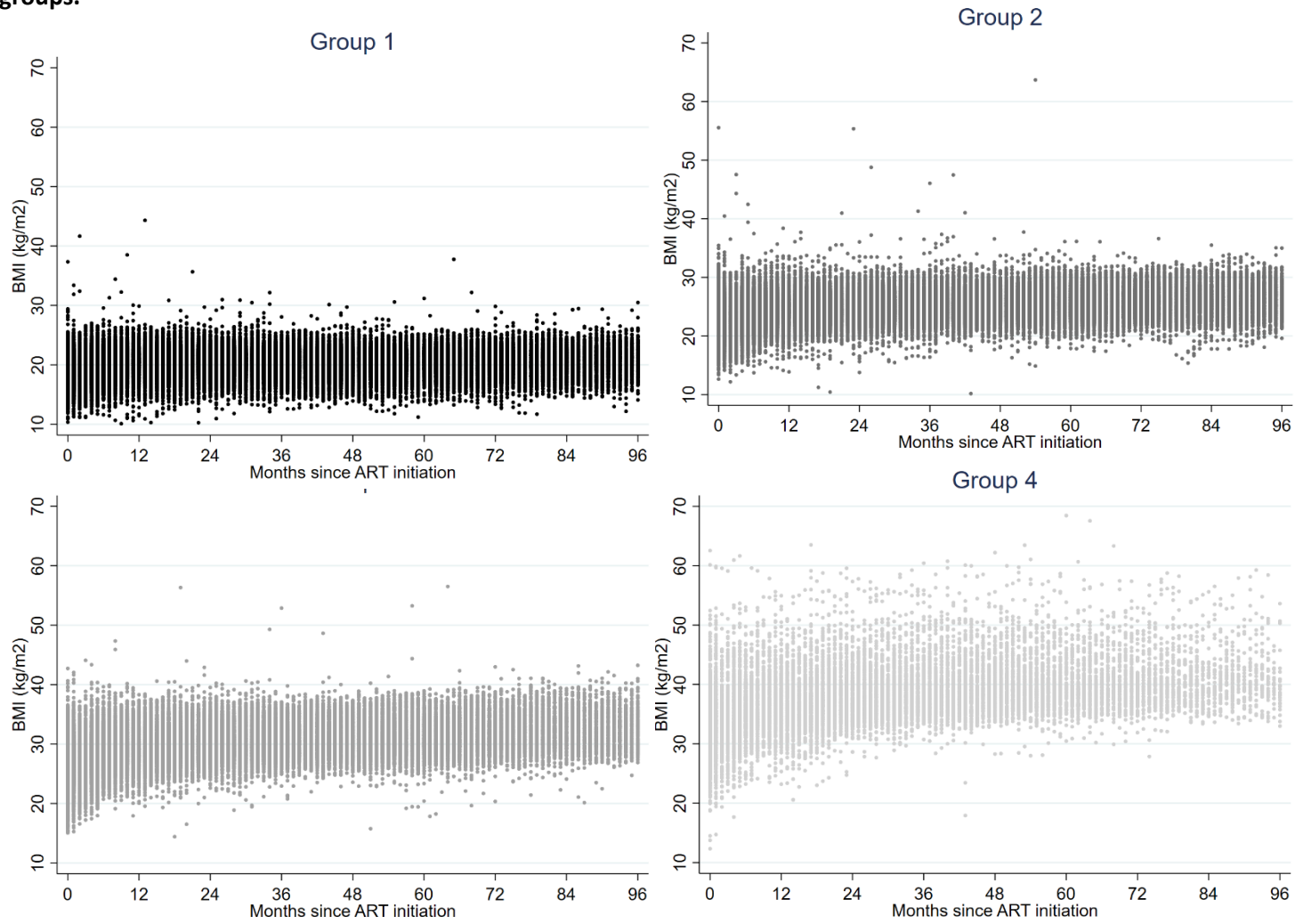


Supplemental Digital Content: Figure 1. Study inclusion criteria



Supplemental Digital Content: Figure 2. Scatter plot of BMI measurements over eight years by BMI trajectory groups.



Supplemental Digital Content: Table 1: Predictors of trajectory group membership (N=11,263)

Variable	OR*
Group 1 (baseline)	1.00
Group 2	
Intercept	1.14 (0.67, 1.95)
Male vs. Female	0.95 (0.75, 1.20)
Age (years)**	0.97 (0.96, 0.99)
CD4 count (cells/mm ³) **	1.01 (1.01, 1.01)
Group 3	
Intercept	1.00 (0.57, 1.76)
Male vs. Female	1.00 (0.78, 1.28)
Age (years)**	0.97 (0.96, 0.99)
CD4 count (cells/mm ³)**	1.01 (1.01, 1.01)
Group 4	
Intercept	1.00 (0.53, 1.89)
Male vs. Female	1.00 (0.75, 1.33)
Age (years)**	0.96 (0.94, 0.97)
CD4 count (cells/mm ³)**	1.00 (1.00,1.00)

*ORs derived from log-odds estimates for the risk factors for each group relative to group 1 produced by the trajectory model

**Continuous variable

Supplemental Digital Content: Table 2. (A) Transition matrix for BMI at ART initiation and last available BMI for trajectory group 1 (n=3,882)

		Last Available BMI					Total	
		Underweight	Normal	Overweight	Obese I	Obese II		Obese III
BMI at ART Initiation	Underweight	527 (13.6%)	982 (25.3%)	14 (0.4%)	-	-	-	1523 (39.2%)
	Normal	225 (5.8%)	2085 (53.7%)	29 (0.8%)	3 (0.1%)	-	-	2342 (60.3%)
	Overweight	2 (0.1%)	12 (0.3%)	2 (0.1%)	-	-	-	16 (0.4%)
	Obese I	-	-	-	-	-	-	-
	Obese II	-	1 (0.0%)	-	-	-	-	-
	Obese III	-	-	-	-	-	-	-
	Total	754 (19.4%)	3080 (79.3%)	45 (1.2%)	3 (0.1%)	-	-	N=3882

Supplemental Digital Content: Table 3. (A) Transition matrix for BMI at ART initiation and last available BMI for

		Last Available BMI					Total	
		Underweight	Normal	Overweight	Obese I	Obese II		Obese III
BMI at ART Initiation	Underweight	-	122 (2.9%)	160 (3.8%)	14 (0.3%)	-	1 (0.0%)	297 (7.0%)
	Normal	8 (0.2%)	1512 (35.5%)	1586 (37.3%)	114 (2.7%)	2 (0.1%)	3 (0.1%)	3225 (75.7%)
	Overweight	6 (0.1%)	234 (5.5%)	444 (10.4%)	20 (0.5%)	-	-	704 (16.5%)
	Obese I	-	12 (0.3%)	18 (0.4%)	-	-	-	30 (0.7%)
	Obese II	-	1 (0.0%)	-	-	-	-	1 (0.0%)
	Obese III	-	1 (0.0%)	-	-	-	-	1 (0.0%)
	Total	14 (0.3%)	1882 (44.2%)	2208 (51.9%)	148 (3.5%)	2 (0.1%)	4 (0.1%)	N=4258

trajectory group 2 (n=4,258)

Supplemental Digital Content: Table 4. (A) Transition matrix for BMI at ART initiation and last available BMI

		Last Available BMI					Total	
		Underweight	Normal	Overweight	Obese I	Obese II		Obese III
BMI at ART Initiation	Underweight	-	-	8 (0.3%)	18 (0.8%)	3 (0.1%)	-	29 (1.21%)
	Normal	-	6 (0.3%)	261 (10.9%)	362 (15.1%)	82 (3.4%)	6 (0.3%)	717 (29.9%)
	Overweight	-	9 (0.4%)	488 (20.3%)	597 (24.9%)	117 (4.9%)	3 (0.1%)	1214 (50.6%)
	Obese I	1 (0.0%)	9 (0.4%)	87 (3.6%)	253 (10.5%)	59 (2.5%)	-	409 (17.0%)
	Obese II	-	-	4 (0.2%)	21 (0.9%)	4 (0.2%)	-	29 (1.2%)
	Obese III	-	-	1 (0.0%)	2 (0.1%)	-	-	3 (0.1%)
	Total	1 (0.0%)	24 (1.0%)	849 (35.4%)	1253 (52.2%)	265 (11.0%)	9 (0.4%)	N=2401

trajectory group 3 (n=2,401)

Supplemental Digital Content: Table 5. (A) Transition matrix for BMI at ART initiation and last available BMI for trajectory group 4 (n=722).

		Last Available BMI					Total	
		Underweight	Normal	Overweight	Obese I	Obese II		Obese III
BMI at ART Initiation	Underweight	-	-	-	-	2 (0.3%)	1 (0.1%)	3 (0.4%)
	Normal	-	-	-	3 (0.4%)	28 (3.9%)	14 (1.9%)	45 (6.2%)
	Overweight	-	-	1 (0.1%)	15 (2.1%)	72 (10.0%)	45 (6.2%)	133 (18.4%)
	Obese I	-	1 (0.1%)	4 (0.6%)	68 (9.4%)	136 (18.8%)	77 (10.7%)	286 (39.6%)
	Obese II	-	-	1 (0.1%)	21 (2.9%)	79 (10.9%)	79 (10.9%)	180 (24.9%)
	Obese III	-	-	-	2 (0.3%)	15 (2.1%)	58 (8.0%)	75 (10.4%)
	Total	-	1 (0.1%)	6 (0.8%)	109 (15.1%)	332 (46.0%)	274 (38.0%)	N=722