

FIGURE E1. Freedom from bronchiolitis obliterans syndrome (BOS) for patients with chronic obstructive pulmonary disease, separated by group. Early transplant (pre-las) and late transplant (post-las) 95% confidence limits are represented by the *thin lines*. COPD, Chronic obstructive pulmonary disease.

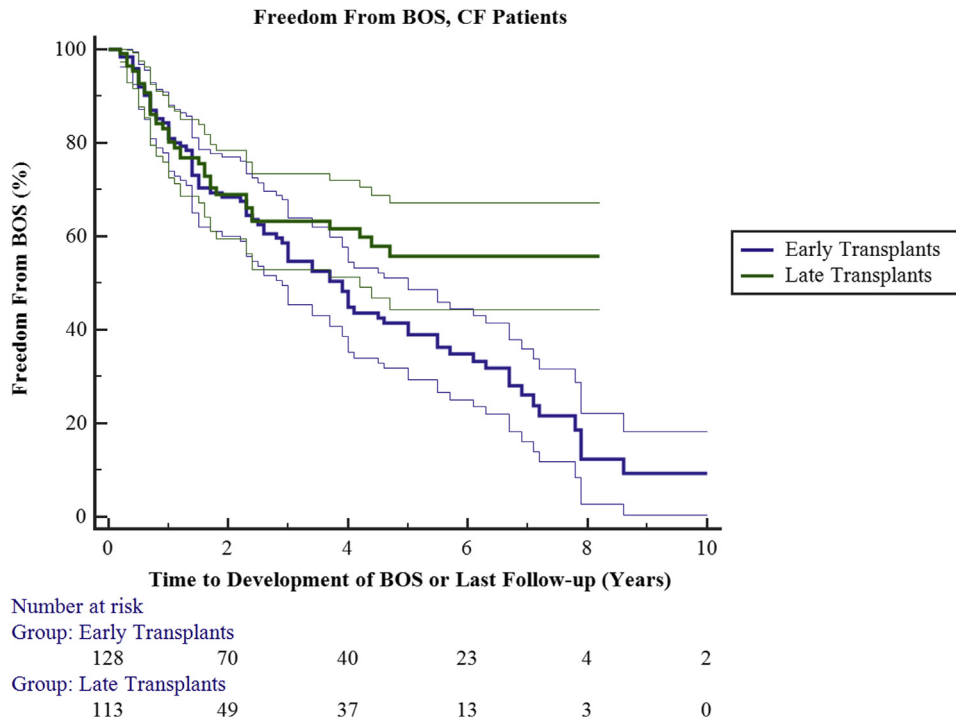


FIGURE E2. Freedom from bronchiolitis obliterans syndrome (BOS) for patients with cystic fibrosis, separated by group. Early transplant (pre-las) and late transplant (post-las) 95% confidence limits are represented by the *thin lines*. CF, Cystic fibrosis.

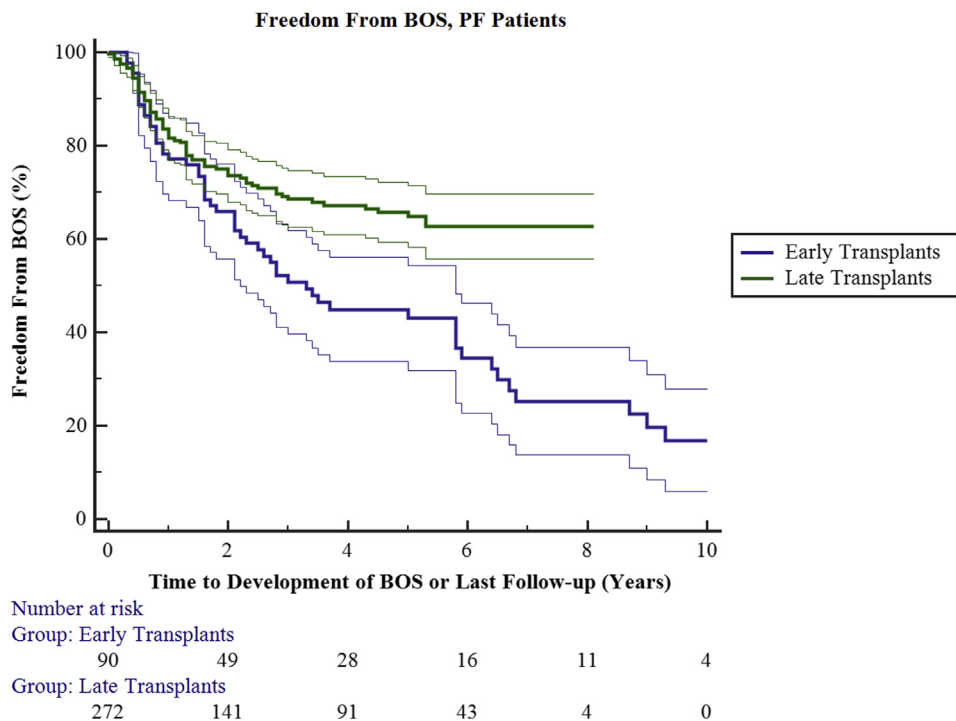


FIGURE E3. Freedom from bronchiolitis obliterans syndrome (*BOS*) for patients with interstitial pulmonary fibrosis, separated by group. Early transplant (pre-las) and late transplant (post-las) 95% confidence limits are represented by the *thin lines*. *PF*, Pulmonary fibrosis.

TABLE E1. Overall patient survival including patients at risk at 5-year intervals and mean survival with 95% confidence intervals, grouped by disease process

Disease	Number at risk (5 y)	Number at risk (10 y)	Number at risk (15 y)	Number at risk (20 y)	Mean survival (y)	95% confidence interval
Cystic fibrosis	121	68	29	7	13.1	11.5-14.7
Chronic obstructive pulmonary disease	260	135	63	13	10.2	9.3-11.0
Interstitial pulmonary fibrosis	145	46	10	2	12.2	10.7-13.6
Other	183	102	49	21	11.2	10.0-12.4

TABLE E2. Early transplant patient survival including patients at risk at 5-year intervals and mean survival with 95% confidence intervals, grouped by disease process

Disease	Number at risk (5 y)	Number at risk (10 y)	Number at risk (15 y)	Number at risk (20 y)	Mean survival (y)	95% confidence interval
Cystic fibrosis	76	58	29	7	12.2	10.3-14.1
Chronic obstructive pulmonary disease	193	124	63	13	10.0	9.1-10.9
Interstitial pulmonary fibrosis	48	31	10	2	9.1	7.3-10.9
Other	132	90	49	21	10.2	8.9-11.5

TABLE E3. Late transplant patient survival including patients at risk at 2-year intervals and mean survival with 95% confidence intervals, grouped by disease process

Disease	Number at risk (2 y)	Number at risk (4 y)	Number at risk (6 y)	Number at risk (8 y)	Mean survival (y)	95% confidence interval
Cystic fibrosis	78	51	35	24	7.8	6.9-8.8
Chronic obstructive pulmonary disease	121	84	50	27	7.1	6.3-7.9
Interstitial pulmonary fibrosis	186	121	72	38	8.6	7.9-9.2
Other	87	63	41	27	8.1	7.3-9.0