

## **Supplemental Appendix**

**Delcourt C, Carcel C, Zheng D, Sato S, Arima H, Bhaskar S, et al. Comparison of ABC methods with computerized estimates of intracerebral hemorrhage volume in the INTERACT2 study.**

## Study Investigators

**Executive Committee:** C.S. Anderson (Principal Investigator), J. Chalmers (Chair), H. Arima, S. Davis, E. Heeley, Y. Huang, P. Lavados, B. Neal, M.W. Parsons, R. Lindley, L. Morgenstern, T. Robinson, C. Stapf, C. Tzourio, and J.G. Wang. **National Leaders:** *China - Steering Committee:* Y. Huang (Chair), S. Chen, X.Y. Chen, L. Cui, Z. Liu, C. Lu, J. Wang, S. Wu, E. Xu, Q. Yang, C. Zhang, J. Zhang. *Europe - Austria:* R. Beer, E. Schmutzhard; *Belgium:* P. Redondo; *Finland:* M. Kaste, L. Soinne, T. Tatlisumak; *France:* C. Stapf; *Germany:* K. Wartenberg; *Italy:* S. Ricci; *The Netherlands:* K. Klijn; *Portugal:* E. Azevedo; *Spain:* A. Chamorro; *Switzerland:* M. Arnold, U. Fischer; *India:* S. Kaul, J. Pandian, H. Boyini, S. Singh; *North America - A Rabinstein;* *South America - Argentina – C. Estol;* *Brazil – G. Silva;* *Chile – P. Lavados, V.V. Olavarria;* and *United Kingdom – T.G. Robinson.*

**Data Safety and Monitoring Committee:** J. Simes (Chair), M.-G. Bousser, G. Hankey, K. Jamrozik (deceased), C. Johnston, and S. Li. **Project Office Operations Committee:** E. Heeley (Study Director), C.S. Anderson, K. Bailey, J. Chalmers, T. Cheung, C. Delcourt, S. Chintapatla, E. Ducasse, T. Erho, J. Hata, B. Holder, E. Knight, R. Lindley, M. Leroux, T. Sassé, E. Odgers, R. Walsh, and Z. Wolfowicz. **Endpoint Adjudication Committee:** C.S. Anderson, G. Chen, C. Delcourt, S. Fuentes, R. Lindley, B. Peng, H.-M. Schneble, and M.-X. Wang. **Statistical Analysis:** H. Arima, L. Billot, S. Heritier, Q. Li, and M. Woodward. **CT Analyses:** C. Delcourt (Chair), S. Abimbola, S. Anderson, E. Chan, G. Cheng, P. Chmielnik, J. Hata, S. Leighton, J.-Y. Liu, B. Rasmussen, A. Saxena, and S. Tripathy. **Data Management and Programming:** M. Armenis, M.A. Baig, B. Naidu, G. Starzec, and S. Steley. **Coordinating Centres:** *International* (The George Institute for Global Health, Sydney, Australia) – C.S. Anderson, E. Heeley, M. Leroux, C. Delcourt, T. Sassé, E. Knight, K. Bailey, T. Cheung, E. Odgers, E. Ducasse, B. Holder, Z. Wolfowicz, R. Walsh, S. Chintapatla, T. Erho; *Argentina, Buenos Aires* (STAT Research) – C. Estol, A. Moles, A.

Ruiz, M. Zimmermann; *Brazil, Fortaleza* (Medicamenta MRS) – J. Marinho, S. Alves, R. Angelim, J. Araujo, L. Kawakami; *Chile, Santiago* (Clínica Alemana, Universidad del Desarrollo) – P. Lavados, V.V. Olavarria, C. Bustos, F. Gonzalez, P. Munoz Venturelli; *China, Beijing* (The George Institute China incorporating George Clinical, and Peking University First Hospital) – Y. Huang, X. Chen, Y. Huang, R. Jia, N. Li, S. Qu, Y. Shu, A. Song, J. Sun, J. Xiao, and Y. Zhao; *China, Shanghai* (The Centre for Epidemiological Studies and Clinical Trials, The Shanghai Institute of Hypertension, Rui Jin Hospital, Shanghai Jiaotong University School of Medicine) - J.-G. Wang, Q. Huang; *Europe, Paris* (Unité de Recherche Clinique, APHP - Hôpital Lariboisière) – C. Stapf, E. Vicaut, A. Chamam, M.-C. Viaud, C. Dert, U. Fiedler, V. Jovis, S. Kabla, S. Marchand, A. Pena, V. Rochaud; *India, Hyderabad* (The George Institute India) – K. Mallikarjuna H. Boyini, N. Hasan; *Norway, Oslo* (Oslo University Hospital) – E. Berge, E.C. Sandset, A. S. Forårsveen; *United Kingdom* (Department of Cardiovascular Sciences, University of Leicester) – T. Robinson, D. Richardson, T. Kumar, S. Lewin; *United Kingdom* (London, Imperial Clinical Trials Unit) - N. Poulter, J. Field, A. Anjum, A. Wilson,. **Principal Investigators and Coordinators (according to country and center, with numbers of patients in parentheses):** *Argentina (4)* - Clínica Instituto Medico Adroque (1): H. Perelmuter, A.M. Agarie; Hospital Central de Mendoza (3): A.G. Barboza, L.A. Recchia, I.F. Miranda, S.G. Rauek, R.J. Duplessis; *Australia (73)* - Austin Hospital (5): H. Dewey, L. Walker, S. Petrolo; Box Hill (3): C. Bladin; Gosford Hospital (22): J. Sturm, D. Crimmins, D. Griffiths, A. Schutz, V. Zenteno; John Hunter Hospital (10): M.W. Parsons, F. Miteff, N. Spratt, E. Kerr, C.R. Levi; Monash Medical Centre (5): T.G. Phan, H. Ma, L. Sanders, C. Moran, K. Wong; Royal Brisbane and Women's Hospital (3): S. Read, R. Henderson, A. Wong, R. Hull, G. Skinner; Royal Melbourne Hospital (13): S. Davis, P. Hand, B. Yan, H. Tu, B. Campbell; Royal Prince Alfred Hospital (4): C.S. Anderson, C. Delcourt; Sir Charles Gairdner Hospital

(4): D.J. Blacker; Western Hospital (4): T. Wijeratne, M. Pathirage, M. Jasinararchchi, Z. Matkovic, S. Celestino; *Austria (63)* - Allgenmeines Krankenhaus Linz (9): F. Gruber, M.R. Vosko, E. Diabl, S. Rathmaier; Innsbruck Medical University - Department of Neurology (34): R. Beer, E. Schmutzhard, B. Pfausler, R. Helbok; Medical University of Graz, Department of Neurology (20): F. Fazekas, R. Fischer, B. Poltrum, B. Zechner, U. Trummer; *Belgium (12)* - Cliniques De L'Europe (Europe Clinic) (1): M.P. Rutgers; UCL St Luc (5): A. Peeters, A. Dusart, M.-C. Duray, C. Parmentier, S. Ferrao-Santos; Universitair Ziekenhuis Brussel (6): R. Brouns, S. De Raedt, A. De Smedt, R.-J. Van Hooff, J. De Keyser; *Brazil (17)* - Hospital das Clínicas de Porto Alegre (5): S.C.O. Martins, A.G. de Almeida, R. Broudani, N.F. Tilton; Hospital Quinta D'Or (1): G.R. de Freitas, F.M. Cardoso, L.M. Giesel, N.A. Lima Junior; Hospital Santa Marcelina (3): A.C. Ferraz de Almeida, R.B. Gomes, T.S. Borges dos Santos, E.M. Veloso Soares, O.L.A. Neto; Universidade Federal de São Paulo (7): G.S. Silva, D.L. Gomes, F.A. de Carvalho, M. Miranda, A. Marques; Universidade Federal do Paraná (1): V.F. Zétola, G. de Matia, M.C. Lange; *Chile (29)* - Clinica Alemana de Santiago (8): J. Montes, A. Reccius, P. Munoz Venturelli, V.V. Olavarria, A. Soto; Clínica Alemana de Temuco, Chile (3): R. Rivas, C. Klapp; Clínica Dávila (5): S. Illanes, C. Aguilera, A. Castro; Complejo Asistencial Dr. Víctor Ríos Ruiz (12): C. Figueroa, J. Benavides, P. Salamanca, M.C. Concha, J. Pajarito; Hospital Naval Almirante Nef (1): P. Araya, F. Guerra; *China (1926)* - Baotou Central Hospital (225): Y. Li, G. Liu, B. Wang, J. Zhang, Y. Chong; Beijing Shijitan Hospital (19): M. He, L. Wang, J. Liu; Beijing Tongren Hospital (11): X. Zhang, C. Lai, H. Jiang, Q. Yang, S. Cui; Chang Ning District Central Hospital (25): Q. Tao, Y. Zhang, S. Yao, M. Xu, Y. Zhang; Changsha Central Hospital (42): Z. Liu, H. Xiao, J. Hu, J. Tang; Gongli Hospital, Pudong New Area, Shanghai (11): J. Sun, H. Ji, M. Jiang; Haidian Hospital, Beijing (9): F. Yu, Y. Zhang, X. Yang, X. Guo; Hejian City People's Hospital (158): Y. Wang, L. Wu, Z. Liu, Y. Gao, D. Sun; Hunan Province

Brain Hospital (14): X. Huang, Y. Wang, L. Liu, Y. Li, P. Li; Jiangsu Province Hospital of Traditional Chinese Medicine (9): Y. Jiang, H. Li, H. Lu; Nanjing First Hospital (10): J. Zhou, C. Yuan; Navy General Hospital (2): X. Qi, F. Qiu, H. Qian, W. Wang, J. Liu; Peking University First Hospital (4): Y. Huang, W. Sun, F. Li, R. Liu, Q. Peng; Peking University Shougang Hospital (8): Z. Ren, C. Fan, Y. Zhang, H. Wang, T. Wang; People's Hospital of Beijing Daxing District (60): F. Shi, C. Duan, S. Chen, J. Wang, Z. Chen; Pinggu County Hospital, Beijing (60): X. Tan, Z. Zhao, Y. Gao, J. Chen, T. Han; Qinghai Province People's Hospital (12): S. Wu, L. Zhang, L. Wang, Q. Hu, Q. Hou; Qinghai University Affiliated Hospital (41): X. Zhao, L. Wang, G. Zeng, L. Ma, F. Wang; Ruijin Hospital Affiliated to Shanghai Jiaotong University School of Medicine (4): S. Chen, L. Zeng, Z. Guo, Y. Fu, Y. Song; Second Hospital of Hebei Medical University (83): L. Tai, X. Liu, X. Su, Y. Yang, R. Dong; Shijiazhuang 260 Hospital (25): Y. Xu, S. Tian, S. Cheng, L. Su, X. Xie; The Affiliated Hospital of Xuzhou Medical College (39): T. Xu, D. Geng, X. Yan, H. Fan, N. Zhao; The Branch Hospital of the First People's Hospital (52): S. Wang, J. Yang; The Chinese PLA No. 263 Hospital (108): J. Zhang, M. Yan, L. Li; The Fifth Affiliated Hospital Sun Yat-Sen University (26): Z. Li, X. Xu, F. Wang; The First Affiliated Hospital of Baotou Medical College (81): L. Wu, X. Guo, Y. Lian, H. Sun, D. Liu; The First Affiliated Hospital of Fujian Medical University (12): N. Wang, Q. Tang; The First Affiliated Hospital of Wenzhou Medical College (68): Z. Han, L. Feng; The Fourth Hospital of Jilin University (73): Y. Cui, J. Tian, H. Chang, X. Sun, J. Wang; The Second Affiliated Hospital Suzhou University (31): C. Liu, Z. Wen; The Second Affiliated Hospital of Guangzhou Medical College (38): E. Xu, Q. Lin; The Second Affiliated Hospital of Wenzhou Medical College (21): X. Zhang, L. Sun, B. Hu, M. Zou, Q. Bao; The Second Hospital of Qinghuangdao (51): X. Lin, L. Zhao, X. Tian, H. Wang, X. Wang; The Second Hospital of Tianjin Medical University (12): X. Li, L. Hao, Y. Duan, R. Wang, Z. Wei; Third Hospital of Hebei Medical

University (20): J. Liu, S. Ren, H. Ren, Y. Wang, Y. Dong; Tianjin Medical University General Hospital (27): Y. Cheng, M. Zou, W. Liu, J. Han, C. Zhang; Tianjin Third Central Hospital (14): Z. Zhang, J. Zhu, Y. Wang, Q. Li; Traditional Chinese Medicine Hospital, Zhangjiagang (10): J. Qian, Y. Sun, K. Liu, F. Long; Wangcheng County People's Hospital of Hunan Province (8): X. Peng, Q. Zhang, Z. Yuan, C. Wang, M. Huang; Wuxi People's Hospital (5): J. Zhang, F. Wang, P. He, Y. You, X. Wang; Xiangya Hospital Central-South University (8): Q. Yang, H. Wang, J. Xia, L. Zhou, Y. Hou; Xining First People's Hospital (21): Y. Wang, L. Liu, Y. Qi, L. Mei, R. Lu; Xuzhou Central Hospital (128): G. Chen, L. Liu, L. Ping, W. Liu, S. Zhou; Yutian County Hospital, Hebei Province (225): J. Wang, L. Wang, H. Li, S. Zhang, L. Wang; Zengcheng People's Hospital (15): R. Zou, J. Guo, M. Li, W. Wei; *Finland* (36) - Helsinki University Central Hospital (36): L. Soenne, S. Curtze, M. Saarela, D. Strbian, F. Scheperjans; *France* (221) - Centre Hospitalier de Saint Denis - Hôpital Delafontaine (11): T. De Broucker, C. Henry, R. Cumurciuc, N. Ibos-Augé; Centre Hospitalier de Versailles André-Mignot (16): A.-C. Zéghoudi, F. Pico; CH Calais (12): O. Dereeper, M.-C. Simian, C. Boisselier, A. Mahfoud; CHRU de Brest (6): S. Timsit, F.M. Merrien; CHU de Nantes - Hôpital G&R Laënnec (13): B. Guillon, M. Sevin, F. Herisson, C. Magne; Hôpital de Meaux (12): A. Ameri, C. Cret, S. Stefanizzi, F. Klapzcynski; Hôpital Kremlin Bicêtre (7): C. Denier, M. Sarov-Riviere; Hôpital Lariboisière (37): C. Stapf, P. Reiner, J. Mawet, D. Hervé, F. Buffon; Hôpital Ste-Anne (9): E. Touzé, V. Domingo, C. Lamy, D. Calvet, M. Pasquini; Hôpital Tenon (12): S. Alamowitch, P. Favrole, I.-P. Muresan; Pitié Salpêtrière (37): S. Crozier, C. Rosso, C. Pires, A. Leger, S. Deltour; Roger Salengro Lille (30): C. Cordonnier, H. Henon, C. Rossi; Service de Neurologie et Neurovasculaire, Groupe Hospitalier Paris Saint Joseph (19): M. Zuber, M. Bruandet, R. Tamazyan, C. Join-Lambert; *Germany* (141) - Charité-University Medicine Berlin - Center for Stroke Research Berlin (CSB) (46): E. Juettler, T. Krause, S. Maul, M. Endres, G.J.

Jungehulsing; Department of Neurology University of Heidelberg UMM Mannheim (23): M. Hennerici, M. Griebe, T. Sauer, K. Knoll; Department of Neurology, University of Ulm (8): R. Huber, K. Knauer, C. Knauer, S. Raubold; Dresden University of Technology, University Hospital, Department of Neurology (27): H. Schneider, H. Hentschel, C. Lautenschläger, E. Schimmel, I. Dzialowski; Goethe University Hospital Frankfurt (10): C. Foerch, M. Lorenz, O. Singer, I.M. R. Meyer dos Santos; Klinikum Frankfurt (Oder) (1): A. Hartmann, A. Hamann, A. Schacht, B. Schrader, A. Teichmann; Martin Luther University (21): K.E. Wartenberg, T.J. Mueller; University Hospital Düsseldorf (3): S. Jander, M. Gliem, C. Boettcher; University Medical Center Hamburg – Eppendorf (2): M. Rosenkranz, C. Beck, D. Otto, G. Thomalla, B. Cheng; *Hong Kong (1)* - Prince of Wales Hospital, Chinese University of Hong Kong (1): K.S. Wong, T.W. Leung, Y.O.Y. Soo; *India (97)* - Apollo Hospitals (1): S. Prabhakar, S.R. Kesavarapu, P.K. Gajjela, R.R. Chenna; Baby Memorial Hospital (13): K. Ummer, M. Basheer, A. Andipet; CARE Hospital, Nampally (10): M.K.M. Jagarlapudi, A.U.R. Mohammed, V.G. Pawar, S.S.K. Eranki; Christian Medical College & Hospital (17): J. Pandian, Y. Singh, N. Akhtar; GNRC Hospitals (16): N.C. Borah, M. Ghose, N. Choudhury; Jehangir Clinical Development Centre Pvt Ltd (2): N.R. Ichaporia, J. Shendge, S. Khese; Lalitha Super Specialities Hospital (27): V. Pamidimukkala, P. Inbamuthaiah, S.R. Nuthakki, N.M.R. Tagallamudi, A.K. Gutti; Postgraduate Institute of Medical Education & Research (10): D. Khurana, P. Kesavarapu, V. Jogi, A. Garg, D. Samanta; St. John's Medical College & Hospital (1): G.R.K. Sarma, R. Nadig, T. Mathew, M.A. Anandan; *Italy (47)* - Central follow up for Italy: E. Caterbi; Nuovo Ospedale Civile, AUSL Modena (15): A. Zini, M. Cavazzuti, F. Casoni, R. Pentore, F. Falzone; Ospedale di Branca (6): S. Ricci, T. Mazzoli, L.M. Greco, C. Menichetti, F. Coppola; Ospedale di Città di Castello (16): S. Cenciarelli, E. Gallinella, A. Mattioni, R. Conduurso, I. Sicilia; San Giovanni Battista (4): M. Zampolini, F. Corea, M. Barbi, C. Proietti; Sapienza University Unità di Trattamento

Neurovascolare (6): D. Toni, A. Pieroni, A. Anzini, A. Falcou, M. Demichele; *The Netherlands* (2) - University Medical Center Utrecht (2): C.J.M. Klijn; *Norway* (5) - Sørlandet Sykehus HF Kristiansand (2): A. Tveiten, E.T. Thortveit, S. Pettersen; Sykehuset Innlandet HF Lillehammer (2): N. Holand, B. Hitland; University Hospital North Norway (1): S.H. Johnsen, A. Eltoft; *Pakistan* (9) - Aga Khan University (9): M. Wasay, A. Kamal, A. Iqrar, L. Ali, D. Begum; *Portugal* (22) - Centro Hospitalar Sao Joao (21): G. Gama, E. Azevedo, L. Fonseca, G. Moreira; Centro Hospitalar Vila Nova de Gaia (1): L.M. Veloso, D. Pinheiro, L. Paredes, C. Rozeira, T. Gregorio; *Spain* (50) - Complejo Hospitalario Universitario de Albacete (6): T. Segura Martin, O. Ayo, J. Garcia-Garcia, I. Feria Vilar, I. Gómez Fernández; Hospital Clinico de Barcelona (10): A. Chamorro, S. Amaro, X. Urrea, V. Obach, A. Cervera; Hospital Universitari de Girona, Dr Josep Trueta (34): Y. Silva, J. Serena, M. Castellanos, M. Terceno, C. Van Eendenburg; *Switzerland* (3) - University of Bern, Inselspital (3): U. Fischer, M. Arnold, A. Weck, O. Findling, R. Lüdi; *United Kingdom* (70) - Addenbrookes Hospital (1): E.A. Warburton, D. Day, N. Butler, E. Bumanlag; Bristol Royal Infirmary (1): S. Caine, A. Steele, M. Osborn, E. Dodd, P. Murphy; County Durham & Darlington NHS Foundation Trust (1): B. Esiyi, E. Brown, R. Hayman, V. K.V. Baliga, M. Minphone; John Radcliffe Hospital (3): J. Kennedy, I. Reckless, G. Pope, R. Teal, K. Michael; King's College Hospital (8): D. Manawadu, L. Kalra, R. Lewis, B. Mistry, E. Cattermole; Leeds General Infirmary (2): A. Hassan, L. Mandizvidza, J. Bamford, H. Brooks, C. Bedford; Musgrove Park Hospital (1): R. Whiting, P. Baines, M. Hussain, M. Harvey; New Cross Hospital (4): K. Fotherby, S. McBride, P. Bourke, D. Morgan, K. Jennings-Preece; Northumbria Healthcare - Wansbeck and North Tyneside General Hospitals (2): C. Price, S. Huntley, V.E. Riddell, G. Storey, R.L. Lakey; Nottingham University Hospital (2): G. Subramanian; Royal Bournemouth Hospital (3): D. Jenkinson, J. Kwan, O. David, D. Tiwari; Royal Devon and Exeter Hospital (3): M. James, S. Keenan, H. Eastwood; Royal



United Hospital Bath NHS Trust (6): L. Shaw, P. Kaye, D. Button, B. Madigan, D. Williamson; Royal Victoria Infirmary Hospital NHS Foundation Trust (8): A. Dixit, J. Davis, M.O. Hossain, G.A. Ford; Salford Royal NHS Foundation Trust (12): A. Parry-Jones, V. O'Loughlin, R. Jarapa, Z. Naing; St George's Healthcare NHS Trust (1): C. Lovelock, J. O'Reilly, U. Khan; St. Thomas Hospital (1): A. Bhalla, A. Rudd, J. Birns; University College London Hospitals NHS Foundation Trust (6): D.J. Werring, R. Law, R. Perry, I. Jones, R. Erande; University Hospital of North Staffordshire (2): C. Roffe, I. Natarajan, N. Ahmad, K. Finney, J. Lucas; University Hospitals of Leicester NHS Trust (3): A. Mistri, D. Eveson, R. Marsh, V. Haunton, T. Robinson; *USA (11)* - Mayo Clinic (11): A.A. Rabinstein, J.E. Fugate, S.W. Lepore.

**Table S1: Baseline characteristics of included and excluded patients**

	Included (n=2084)	Excluded (n=745)	P value
<b>Demographic</b>			
Age, yr	63.6 (13.0)	63.2 (12.5)	0.553
Female	772 (37.0)	277 (37.1)	0.947
Chinese region	1384 (66.4)	536 (71.9)	0.006
<b>Medical history</b>			
ICH	161 (7.7)	68 (9.2)	0.222
Ischemic stroke	212 (10.1)	74 (9.9)	0.866
Acute coronary syndrome	66 (3.2)	15 (2.0)	0.107
Hypertension	1502 (72.1)	546 (73.5)	0.470
Antihypertensive therapy	962 (46.2)	312 (41.8)	0.049
Oral anticoagulants	61 (2.9)	20 (2.7)	0.740
Lipid lowering therapy	154 (7.4)	48 (6.5)	0.397
<b>Clinical features</b>			
Time from onset to CT, hr	1.8 (1.2-2.7)	1.8 (1.2-2.7)	0.422
Time from onset to randomization, hr	3.7 (2.8-4.7)	3.8 (2.9-4.9)	0.009
Systolic BP, mmHg	179.2 (17.0)	178.8 (16.9)	0.493
Diastolic BP, mmHg	101.0 (14.9)	101.5 (14.3)	0.266
GCS score	14 (13-15)	14 (12-15)	0.001
NIHSS score	11 (6-16)	10 (6-15)	0.878
<b>CT findings</b>			
Lobar ICH location	204 (9.8)	56 (10.6)	0.584
<b>ICH volume, mL</b>			
Planimetric	10.68 (5.58-18.66)	11.97 (6.36-23.95)	<0.001
Modified ABC/2*	7.82 (3.88-14.11)	NA	NA
ABC/2*	11.11 (5.11-20.88)	NA	NA
Irregular shape† (n=2088; 2084 in included and 4 in excluded)	953 (45.7)	3 (75.0)	0.240
Heterogenous density† (n=2088; 2084 in included and 4 in excluded)	788 (37.8)	2 (50.0)	0.616
Intraventricular extension (n=2613; 2084 in included and 529 in excluded)	599 (28.7)	141 (26.7)	0.341
Subarachnoid extension (n=2613; 2084 in included and 529 in excluded)	168 (8.1)	26 (4.9)	0.014
White matter lesions (n=2089; 2081 in included and 8 in excluded)	1215 (58.4)	4 (50.0)	0.631
Atrophy (n=2092; 2084 in included and 8 in excluded)	1720 (82.5)	7 (87.5)	0.712
Perihematomal edema volume, mL‡	1.85 (0.88-3.66)	3.02 (2.36-4.11)	0.123
Randomized intensive BP lowering	1042 (50.0)	357 (47.9)	0.330

ICH denotes intracerebral hemorrhage, CT computed tomography, BP blood pressure, GCS

Glasgow coma scale, and NIHSS National Institutes of Health Stroke Scale.

Data are n (%), mean (SD), or median (IQR). P values are based on Chi-squared or Kruskal-Wallis test.

\*Data were available only in included patients.

†Data were available in 150 patients in included patients.

‡Data were available in 801 and 47 in included and excluded patients, respectively.

**Table S2: Patient characteristics by discrepancy between ABC2 and MISTAR (ABC/2 minus MIstar)**

	Discrepancy >0.34 (n=177)	Discrepancy ≤0.34 (n=1907)	P value
<b>Demographic</b>			
Age, years	66.9±13.9	63.3±12.8	0.001
Female	65 (36.7)	707 (37.1)	0.926
Chinese region	90 (50.9)	1294 (67.9)	<0.001
<b>Medical history</b>			
ICH	16 (9.0)	145 (7.6)	0.495
Ischemic stroke	23 (13.0)	189 (9.9)	0.195
Acute coronary syndrome	10 (5.7)	56 (2.9)	0.049
Hypertension	123 (69.5)	1379 (72.4)	0.417
Antihypertensive therapy	83 (46.9)	879 (46.1)	0.843
Antithrombotics therapy	33 (18.6)	220 (11.5)	0.006
Lipid lowering therapy	19 (10.7)	135 (7.1)	0.076
<b>Clinical features</b>			
Time from onset to CT, hour	1.9 (1.4-2.7)	1.8 (1.2-2.7)	0.172
Time from onset to randomization, hr	3.6 (2.7-4.7)	3.7 (2.8-4.7)	0.492
Systolic BP, mmHg	181.2±17.2	179.0±17.0	0.121
Diastolic BP, mmHg	99.4±15.2	101.1±14.8	0.339
GCS score	14 (12-15)	14 (13-15)	0.011
NIHSS score	13 (9-18)	11 (6-15)	<0.001
<b>CT findings</b>			
Lobar ICH location	27 (15.3)	177 (9.3)	0.011
ICH volume, mL	10.68 (6.11-18.65)	10.66 (5.52-18.66)	0.691
Irregular shape	130 (73.5)	823 (43.2)	<0.001
Heterogenous density	83 (46.9)	705 (37.0)	0.009
Intraventricular extension	65 (36.7)	534 (28.0)	0.014
Subarachnoid extension	19 (10.7)	149 (7.8)	0.172
White matter lesions	116 (65.5)	1099 (57.7)	0.044
Atrophy	154 (87.0)	1566 (82.1)	0.101
Perihematoma edema volume, mL*	3.34 (1.44-6.62)	1.79 (0.85-3.53)	<0.001
Randomized intensive BP lowering	86 (48.6)	956 (50.1)	0.694

ICH denotes intracerebral hemorrhage, CT computed tomography, BP blood pressure, GCS Glasgow coma scale, and NIHSS National Institutes of Health Stroke Scale.

Data are n (%), mean (SD), or median (IQR). P values are based on Chi-squared or Kruskal-Wallis test. Median discrepancy = 0.34

\*836 patients had information on baseline perihematoma edema volume.

**Table S3: Patient characteristics by discrepancy between modified ABC2 and MISTAR (mABC/2 minus Mlstar)**

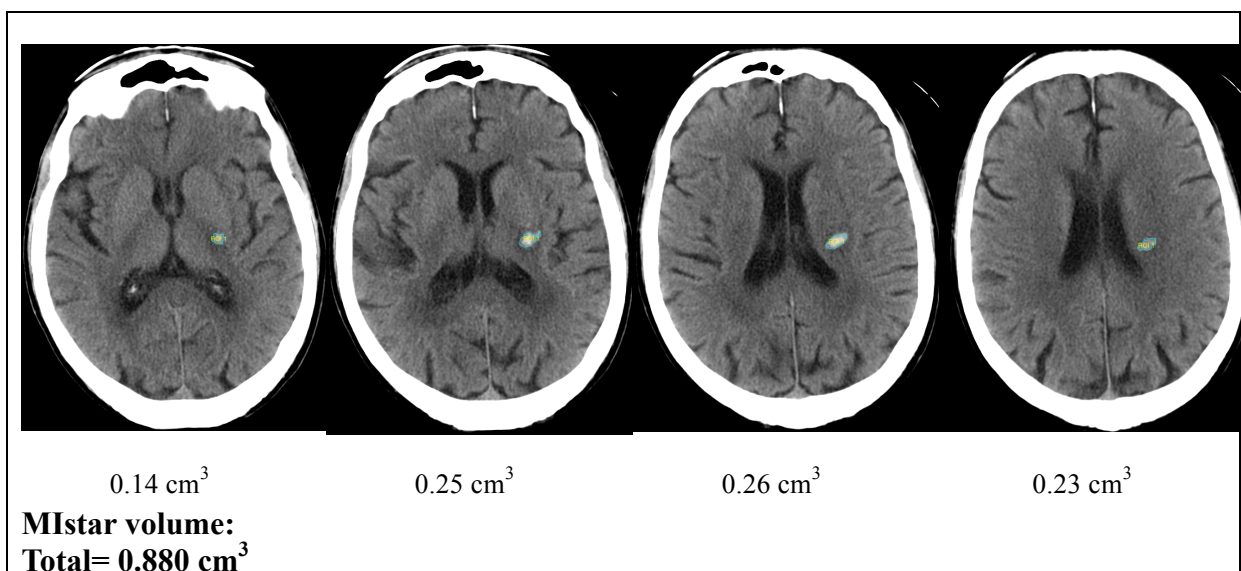
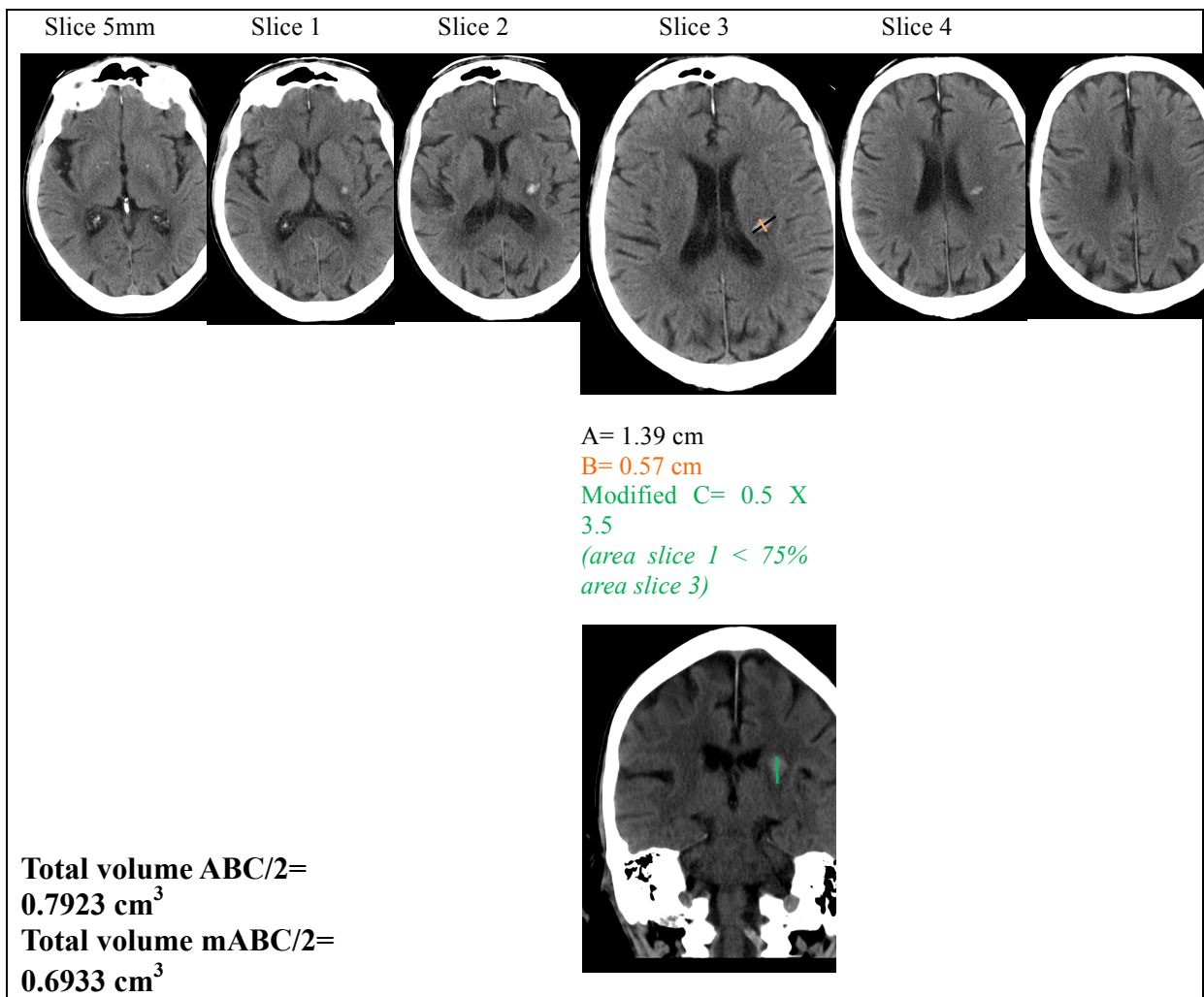
	Discrepancy >-2.4 (n=293)	Discrepancy ≤-2.4 (n=1791)	P value
<b>Demographic</b>			
Age, years	64.0±13.1	61.7±12.2	0.004
Female	672 (37.5)	100 (34.1)	0.265
Chinese region	1172 (65.4)	212 (72.4)	0.020
<b>Medical history</b>			
ICH	131 (7.3)	30 (10.2)	0.083
Ischemic stroke	190 (10.6)	22 (7.5)	0.103
Acute coronary syndrome	58 (3.2)	8 (2.7)	0.644
Hypertension	1295 (72.4)	207 (70.7)	0.548
Antihypertensive therapy	836 (46.7)	126 (43.0)	0.239
Antithrombotics therapy	230 (12.9)	23 (7.9)	0.015
Lipid lowering therapy	134 (7.5)	20 (6.8)	0.689
<b>Clinical features</b>			
Time from onset to CT, hr	1.8 (1.3-2.8)	1.6 (0.9-2.2)	<0.001
Time from onset to randomization, hr	3.8 (2.8-4.7)	3.3 (2.4-4.4)	<0.001
Systolic BP, mmHg	179.1±16.9	179.5±17.8	0.803
Diastolic BP, mmHg	100.6±14.8	103±14.9	0.010
GCS score	14 (13-15)	14 (12-15)	0.242
NIHSS score	10 (6-15)	12 (7-16)	0.001
<b>CT findings</b>			
Lobar ICH location	165 (9.2)	39 (13.3)	0.029
ICH volume, mL	9.63 (4.75-16.65)	17.92 (11.39-30.06)	<0.001
Irregular shape	814 (45.5)	139 (47.4)	0.526
Heterogenous density	672 (37.5)	116 (39.6)	0.498
Intraventricular extension	511 (28.5)	88 (30.0)	0.598
Subarachnoid extension	137 (7.7)	31 (10.6)	0.088
White matter lesions	1053 (58.9)	162 (55.3)	0.246
Atrophy	1486 (83.0)	234 (79.9)	0.194
Median perihematoma edema volume, mL*	1.80 (0.83-3.60)	2.20 (1.30-4.07)	0.014
Randomized intensive BP lowering	900 (50.3)	142 (48.5)	0.571

ICH denotes intracerebral hemorrhage, CT computed tomography, BP blood pressure, GCS Glasgow Coma Scale, and NIHSS, National Institutes of Health Stroke Scale.

Data are n (%), mean (SD), or median (IQR). P values are based on Chi-squared or Kruskal-Wallis test. Median discrepancy = -2.4

\*836 patients had information on baseline perihematoma edema volume.

**Figure S1. Methods of measurement of intracerebral hemorrhage volume**



A is the largest diameter of ICH on the slice with the largest ICH area. B is the largest diameter at 90° to A on the same slice. C is the number of the slices on which the ICH is seen multiplied by the slice thickness. For the modified ABC/2 estimate, one slice is accounted as ½ slice because the area of the ICH on the slice is <75% of the largest ICH area. MIstar measurement produce a volume automatically calculated according to the slice thickness; these volumes are added to calculate the total ICH volume.