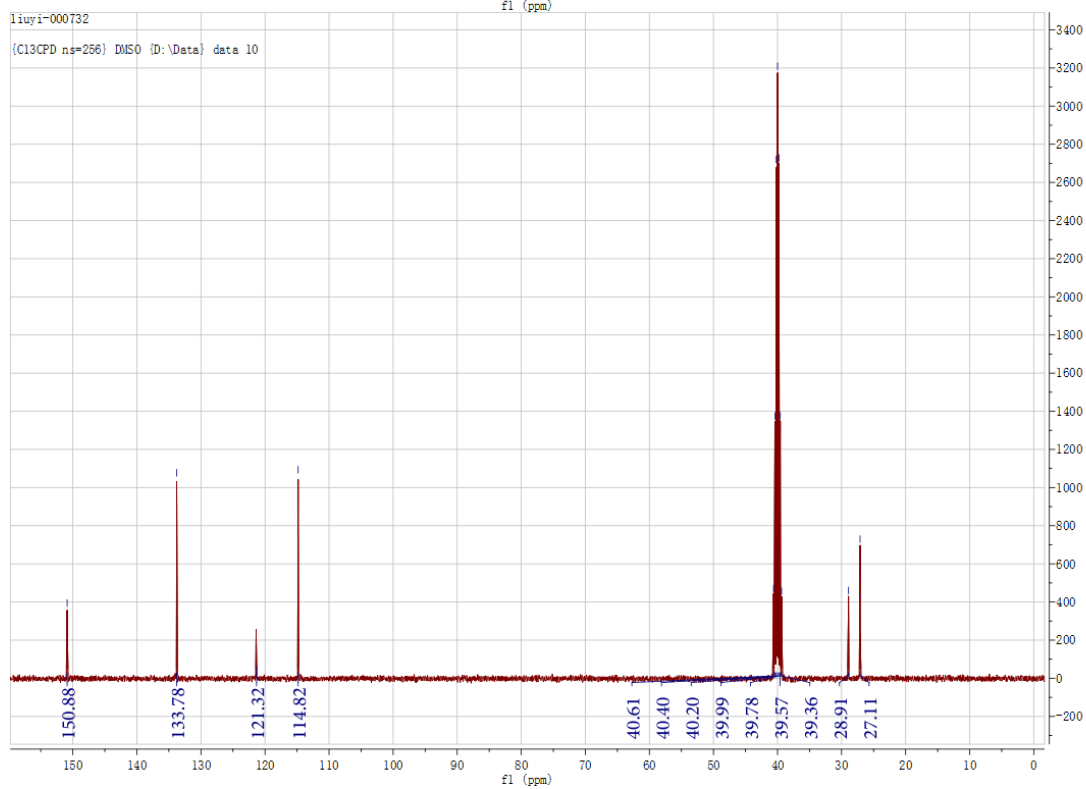
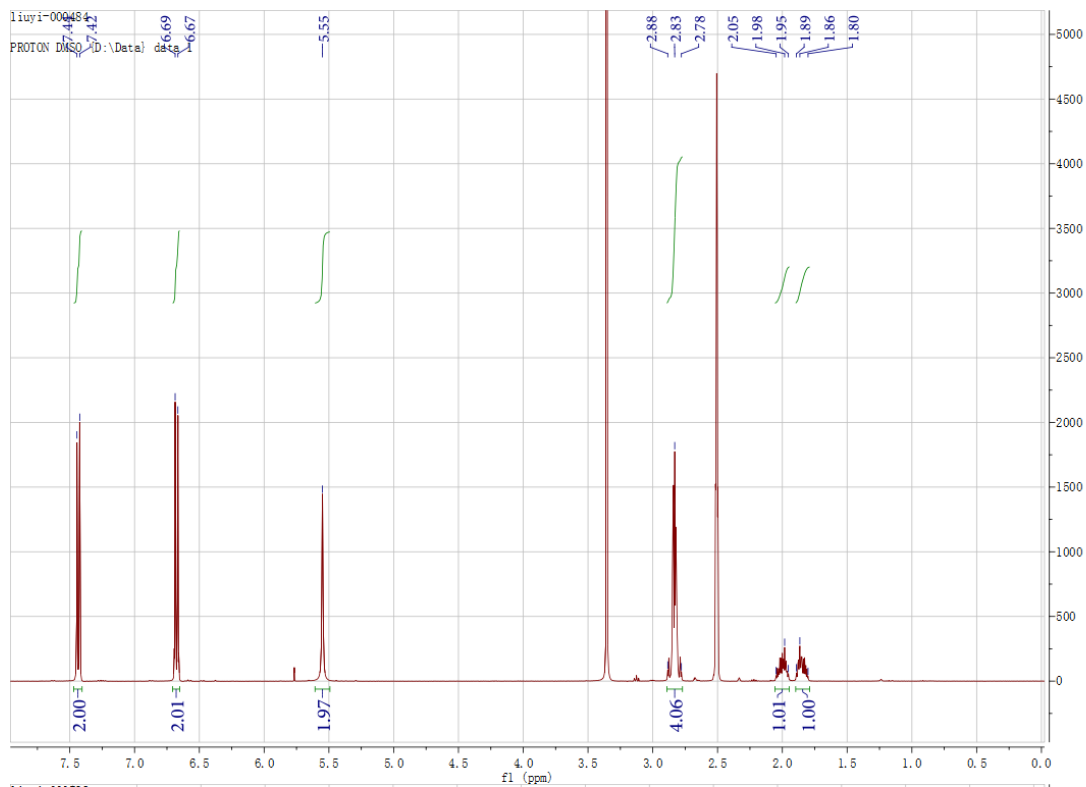
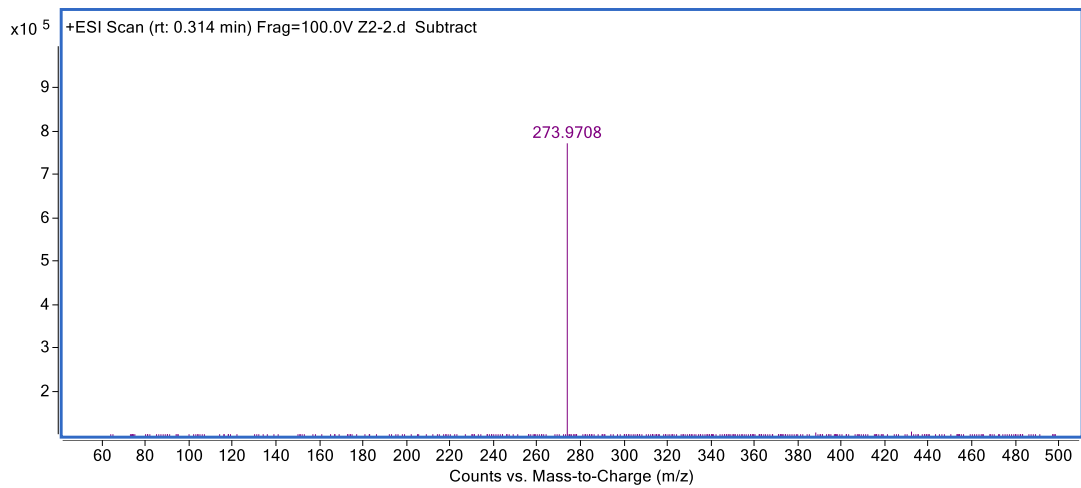


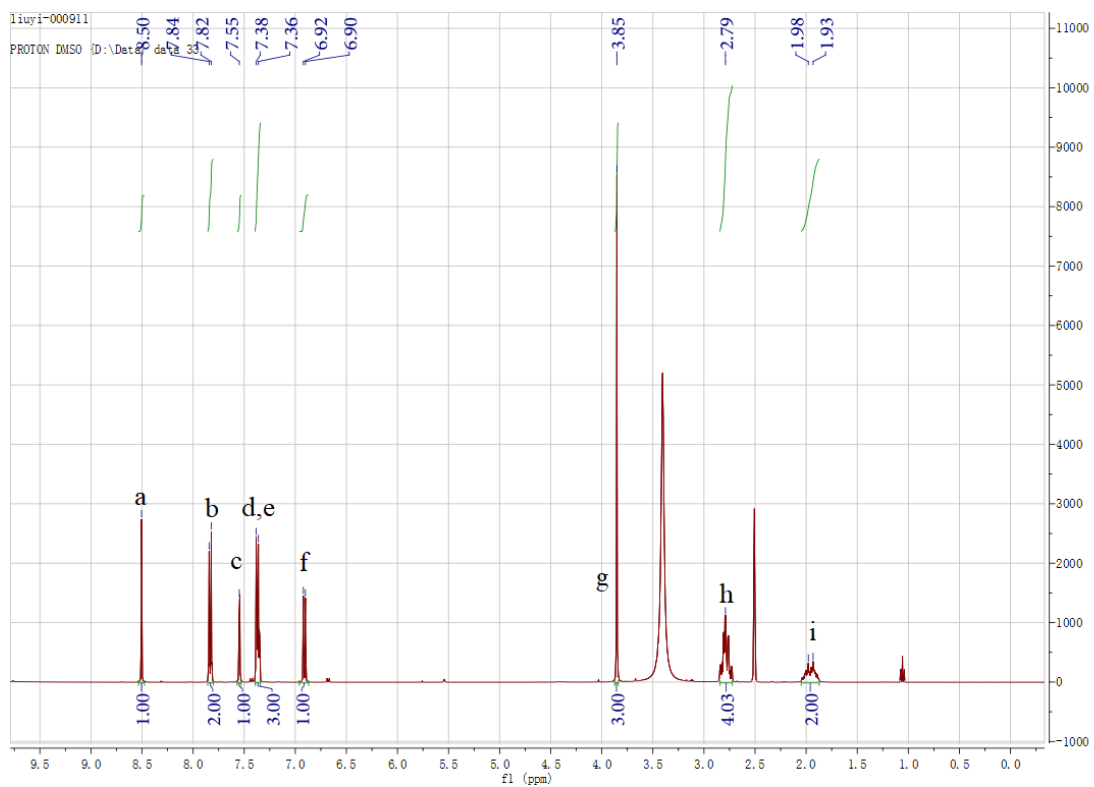
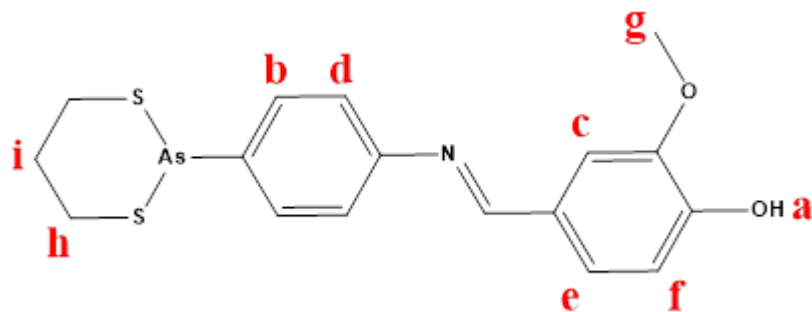
Supporting information

A: PDT-PAO





B: PDT-BIPA



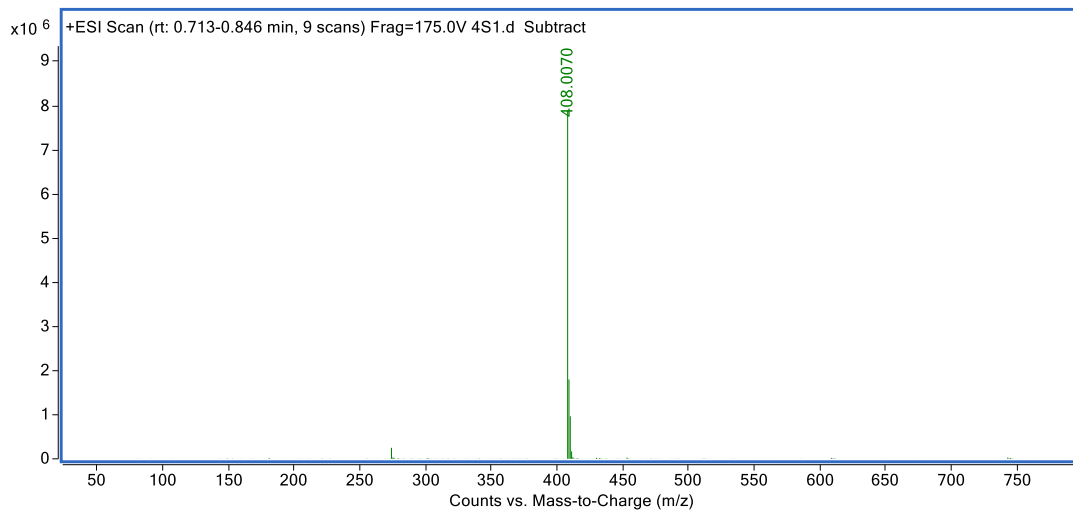
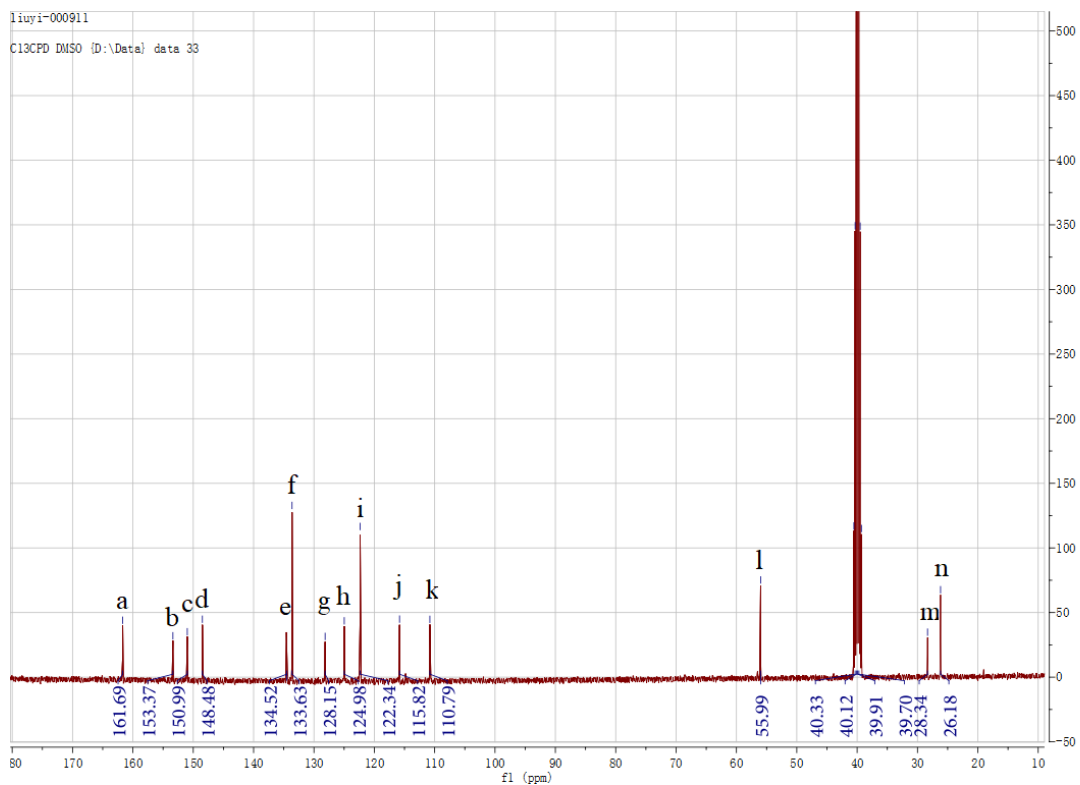
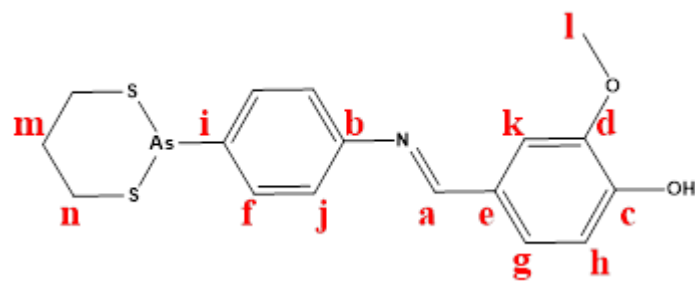


Figure S1. ^1H and ^{13}C NMR and Mass spectra of PDT-PAO (A) and PDT-BIPA (B).

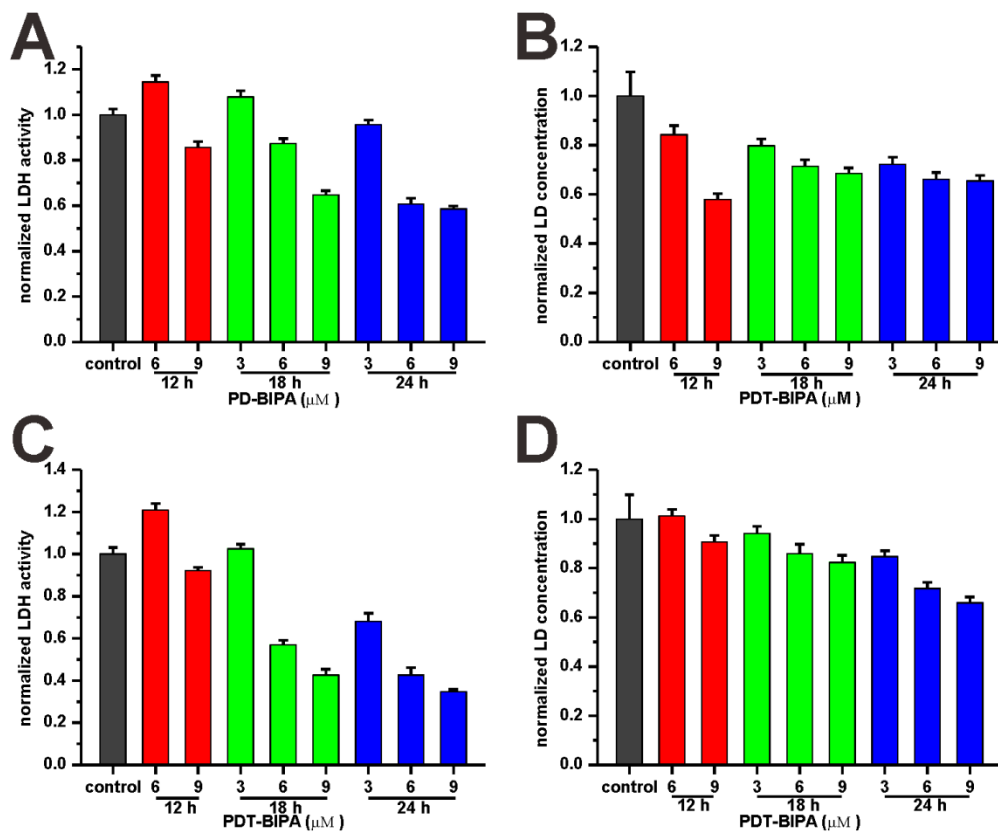


Figure S2. LDH inhibition and LD reduction. GES cells were incubated with PDT-BIPA of several concentrations for 3, 6, 9 h or 12, 18, 24 h. The LDH activity and LD concentration of the cell lysate (A, B) or the medium (C, D) were tested according to the kit instruction.

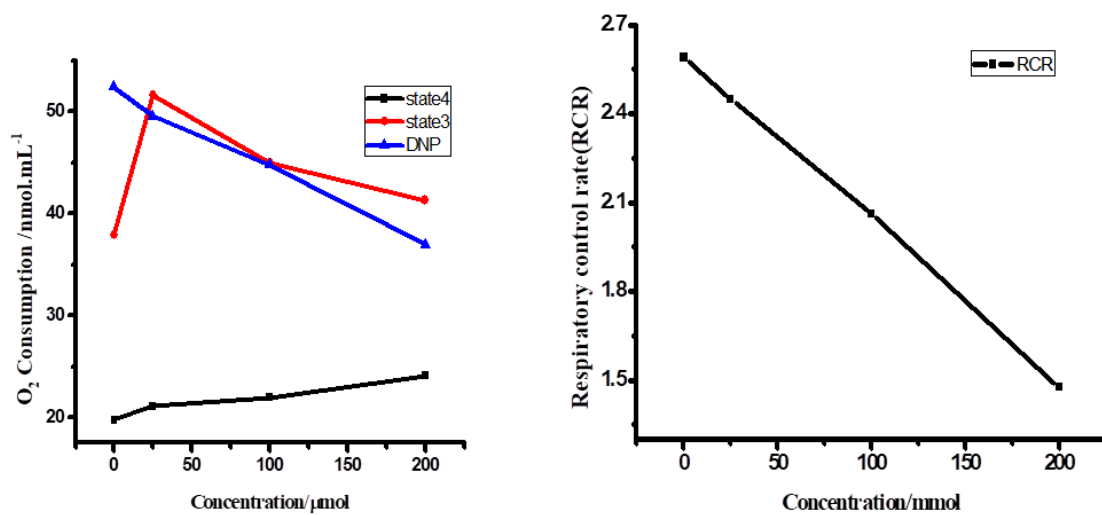


Figure S3. The OCR of isolated mitochondria and the reduced RCR.

Table S1. Influence of PDT-BIPA on mitochondrial metabolism parameters.^[a]

As/ μM	0	50	100	200
-------------------	---	----	-----	-----

Q/J	11.87	11.51	10.17	10.07
k₁/h⁻¹	0.2000	0.1809	0.1657	0.1361
R₁²	0.9900	0.9971	0.9967	0.9912
t₁/h	30.78	42.51	45.15	52.55
P₁/μW	171.51	168.66	170.99	140.11
K₂/h⁻¹	0.0927	0.0731	0.0600	0.1521
R₂²	0.9935	0.9929	0.9907	0.9933
t₂/h	36.53	47.31	49.43	55.58
P₂/μW	266.56	232.97	215.78	200.43
K₃/h⁻¹	-0.348	-0.274	-0.1923	-0.1253
R₃²	0.9830	0.9849	0.9869	0.9858

[a] k_1 : rate constant in activity recovery phase; k_2 : rate constant in stationary increase phase; k_3 : rate constant in decline phase; R: correlation coefficient; P_m : maximum power output; t_m : maximum power output time; Q: total heat output.