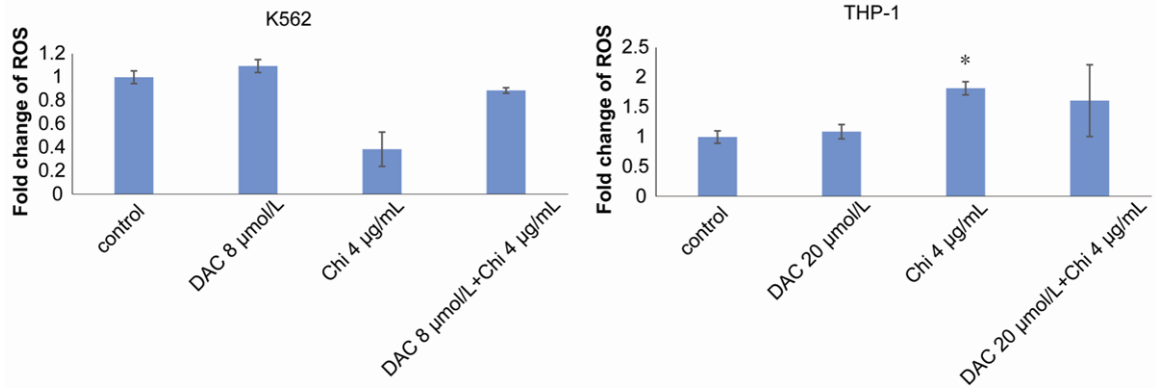
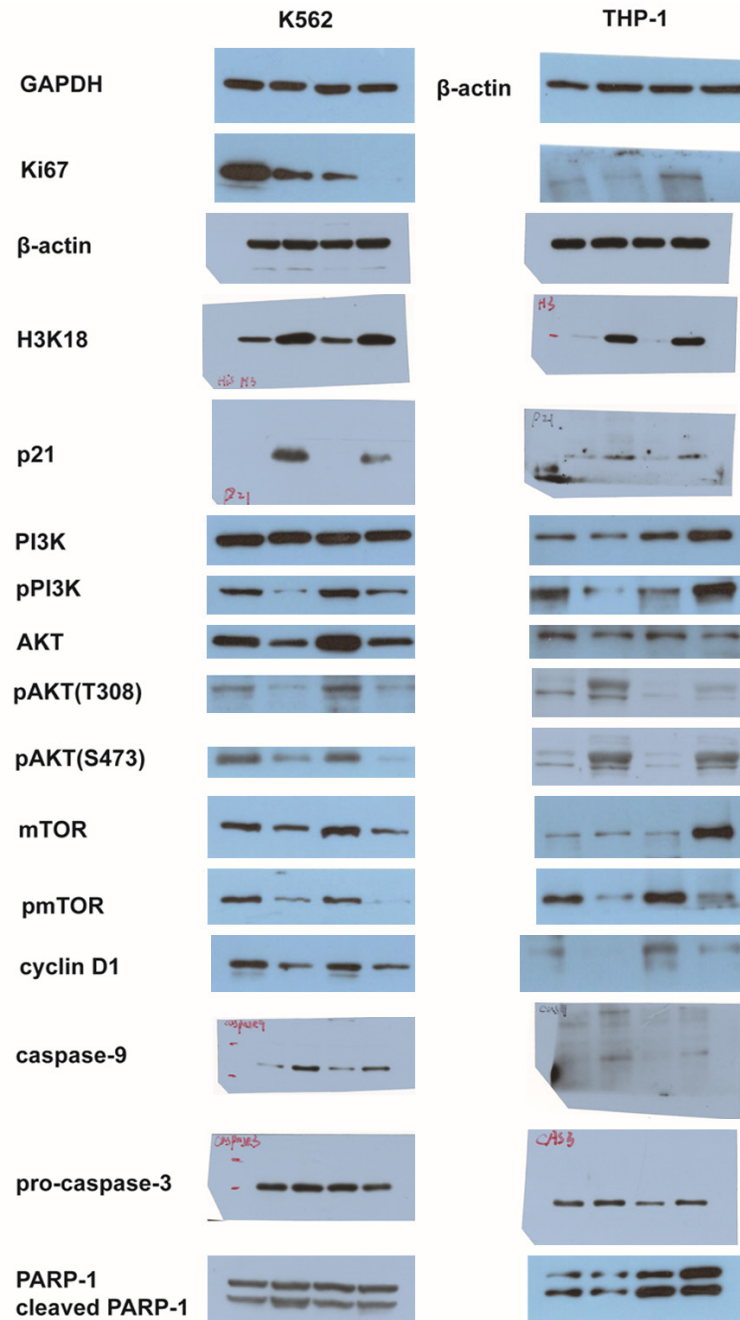


Low-dose decitabine and chidamide promote apoptosis of myeloid leukemia cells



Supplementary Figure 1. Levels of intracellular ROS induced by 4 µg/mL chidamide or decitabine (8 µmol/L in K562 cells or 20 µmol/L in THP-1 cells) alone or in combination after 72 h of incubation were detected by flow cytometry. “*” represents a significant difference compared with the control (* $P < 0.05$).

Low-dose decitabine and chidamide promote apoptosis of myeloid leukemia cells



Supplementary Figure 2. Original western blotting images for all relevant bands in **Figure 1** (Ki67), **Figure 2** (Ac-H3K18), **Figure 3** (P21), **Figure 4** (PI3K, p-PI3K, AKT, p-AKT, mTOR, p-mTOR, cyclin D1) and **Figure 5** (caspase 3, caspase 9, PARP-1 and cleaved PARP-1).