

## Supplementary Materials

*Article*

# Harvest Age Effect on Phytochemical Content of White and Black Glutinous Rice Cultivars

**Kawintra Tamprasit**<sup>1</sup>, **Natthida Weerapreeyakul**<sup>2,3,\*</sup>, **Khaetthareeya Sutthanut**<sup>2,3</sup>, **Wipawee Thukhammee**<sup>3,4</sup>, **Jintanaporn Wattanathorn**<sup>3,4</sup>

<sup>1</sup> Graduate School (in the program of Aesthetic Sciences and Health), Faculty of Pharmaceutical Sciences, Khon Kaen University, Khon Kaen, 40002, Thailand; kawintra\_pop@hotmail.com (K.T.)

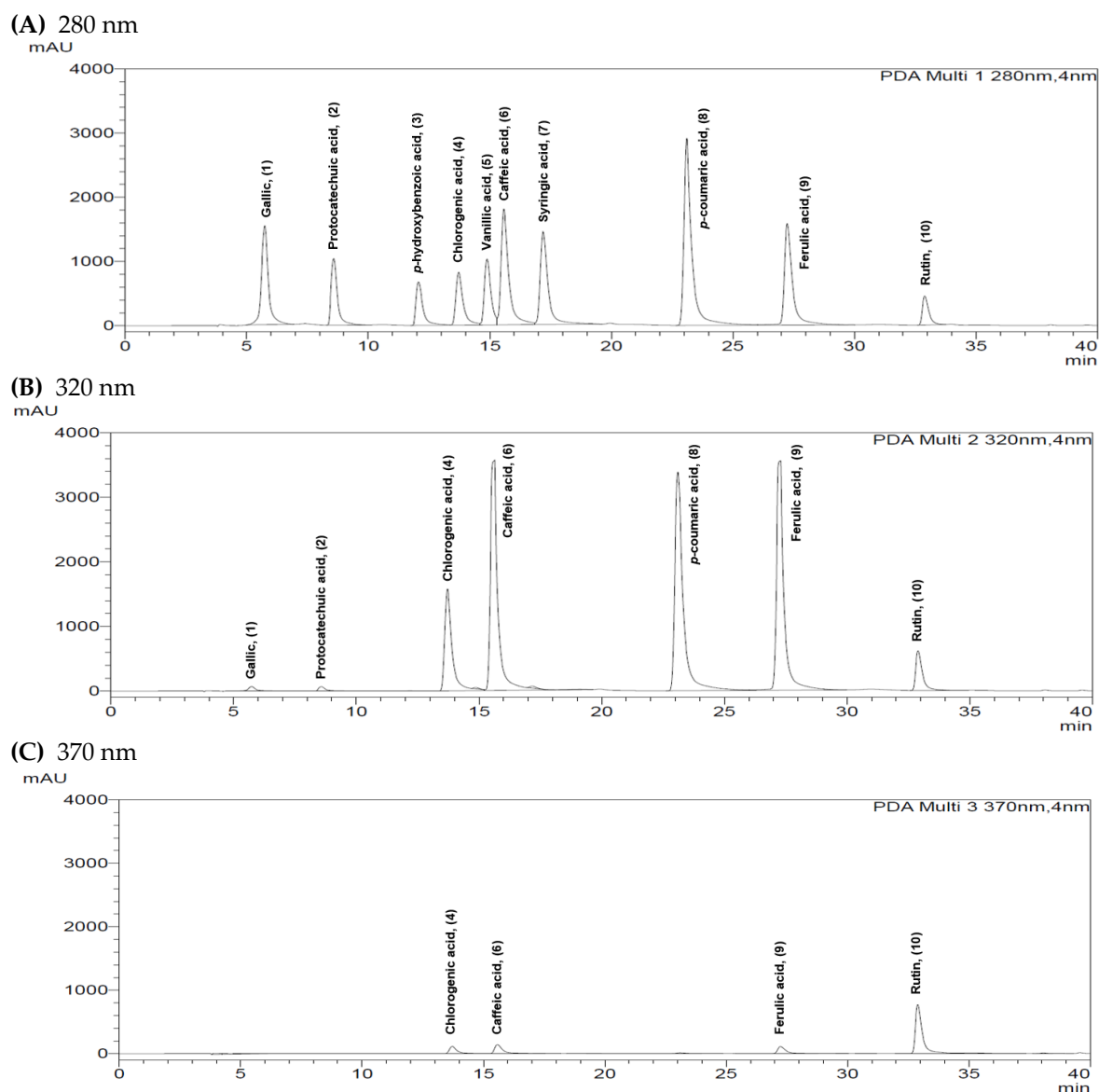
<sup>2</sup> Division of Pharmaceutical Chemistry, Faculty of Pharmaceutical Sciences, Khon Kaen University, Khon Kaen, 40002, Thailand; natthida@kku.ac.th (N.W.); khaesu@kku.ac.th (K.S.)

<sup>3</sup> Human High Performance and Health Promotion (HHP&HP) Research Institute, Khon Kaen University, Khon Kaen, 40002, Thailand; natthida@kku.ac.th (N.W.); khaesu@kku.ac.th (K.S.); meewep@gmail.com

<sup>4</sup> Department of Physiology, Faculty of Medicine, Khon Kaen University, Khon Kaen, 40002, Thailand; meewep@gmail.com (W.T.); jinwat05@gmail.com (J.W.)

\* Correspondence: natthida@kku.ac.th (N.W.); Tel.: +66-4320-2378

Received: date; Accepted: date; Published: date

**Supplementary Material, Figure S1**

**Figure S1.** HPLC chromatograms of the mixture of 10 standard phenolics and flavonoids at 500  $\mu\text{g}/\text{ml}$  in methanol detected at 280, 320 and 370 nm. Peaks for phenolics are (i) hydroxybenzoic acids (viz., gallic acid (1), protocatechuic acid (2), *p*-hydroxybenzoic acid (3), vanillic acid (5), syringic acid (7); and, (ii) hydroxycinnamic acids (viz., chlorogenic acid (4), caffeic acid (6), *p*-coumaric acid (8), and ferulic acid (9). The flavonoid peak is rutin (10).

**Supplementary Material, Table S1**

**Table S1** Summary of R<sup>2</sup> obtained from the linear regression analysis among the phytochemical content and between the phytochemical content and harvest age of the RD6 and BGR cultivars.

		<b>BGR</b>			
		<b>TPC</b>	<b>TCC</b>	<b>TAC</b>	<b>TFC</b>
		0.185	0.745	0.774	0.626
<b>RD6</b>	<b>TPC</b>	<b>0.855</b>	0.011	0.012	0.044
	<b>TCC</b>	0.540	<b>0.268</b>	<b>1.000</b>	<b>0.962</b>
	<b>TAC</b>	0.112	0.214	<b>0.002</b>	<b>0.948</b>
	<b>TFC</b>	0.780	<b>0.931</b>	0.100	<b>0.183</b>

The lower left values represent the correlation coefficient of the RD6 cultivar, while the upper right values represent those of the BGR cultivar.

**Supplementary Material, Table S2****Table S2** Summary of the correlation coefficient (r) of phytochemical content and harvest age of each cultivar.

		<b>BGR</b>				
		<b>TPC</b>	<b>TCC</b>	<b>TAC</b>	<b>TFC</b>	
		-0.396 ( <i>p</i> =0.292)	0.863* ( <i>p</i> =0.003)	-0.880* ( <i>p</i> =0.001)	0.791* ( <i>p</i> =0.002)	
<b>RD6</b>	<b>TPC</b>	-0.944* ( <i>p</i> <0.001)	1.000	0.107 ( <i>p</i> =0.7884)	-0.111 ( <i>p</i> =0.760)	0.210 ( <i>p</i> =513)
	<b>TCC</b>	-0.735* ( <i>p</i> =0.024)	0.518 ( <i>p</i> =0.154)	1.000	-1.000* ( <i>p</i> <0.001)	0.981* ( <i>p</i> <0.001)
	<b>TAC</b>	0.335 ( <i>p</i> =0.314)	-0.463 ( <i>p</i> =0.152)	0.045 ( <i>p</i> =0.908)	1.000	-0.974* ( <i>p</i> <0.001)
	<b>TFC</b>	-0.883* ( <i>p</i> <0.001)	0.965* ( <i>p</i> <0.001)	0.316 ( <i>p</i> =0.408)	-0.428 ( <i>p</i> =0.189)	1.000

The lower left values represent the correlation coefficient of the RD6 cultivar, while the upper right values represent those of the BGR cultivar. TPC = Total phenolic content, TCC = Total chlorophyll content, TAC = Total anthocyanin content, TFC = Total flavonoid content, (r) near to +1 or -1 indicates a strong relationship and near to 0 indicates a weak or no relationship. \*Correlation is significant at  $p < 0.05$ .