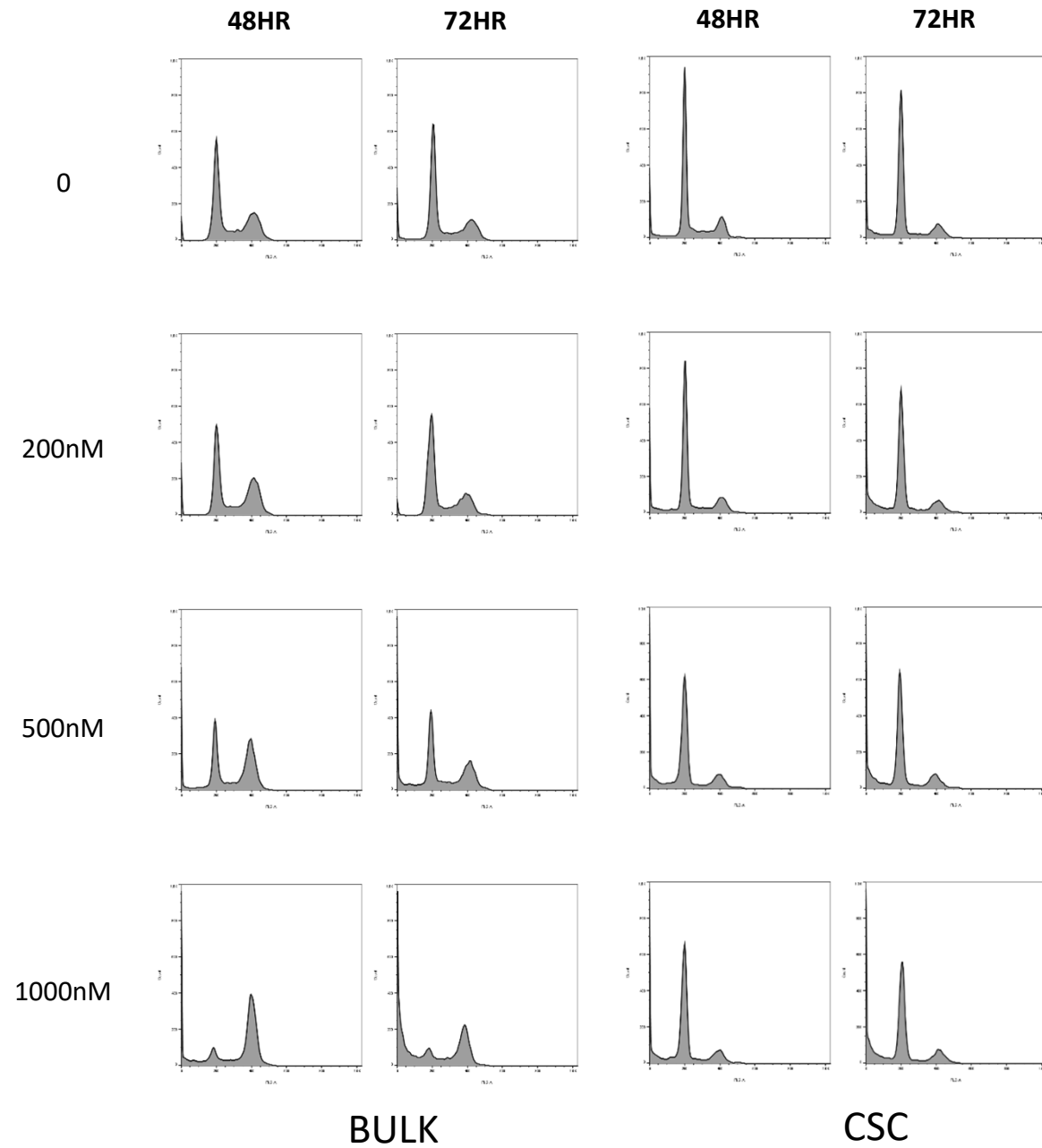
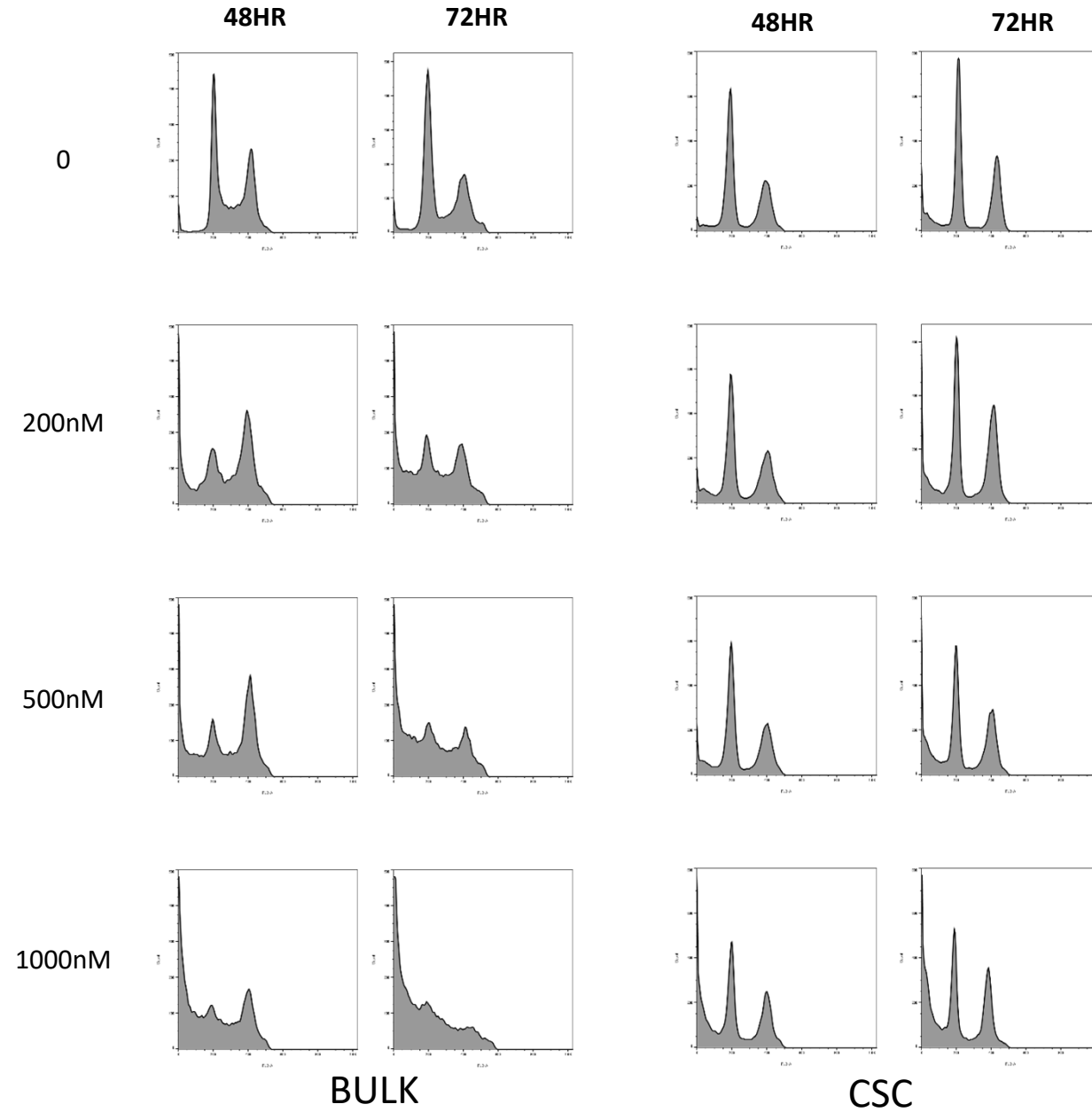


HT29



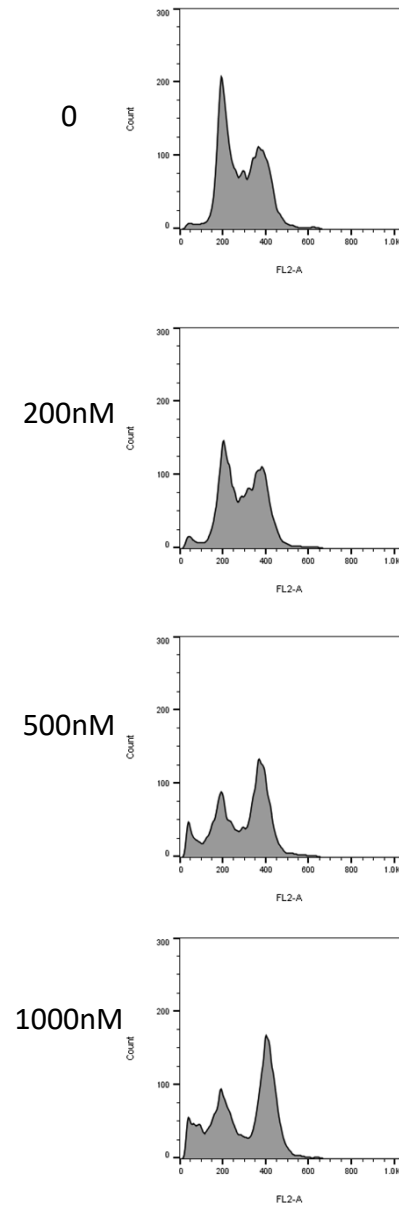
SW480

Supplementary Figure 2

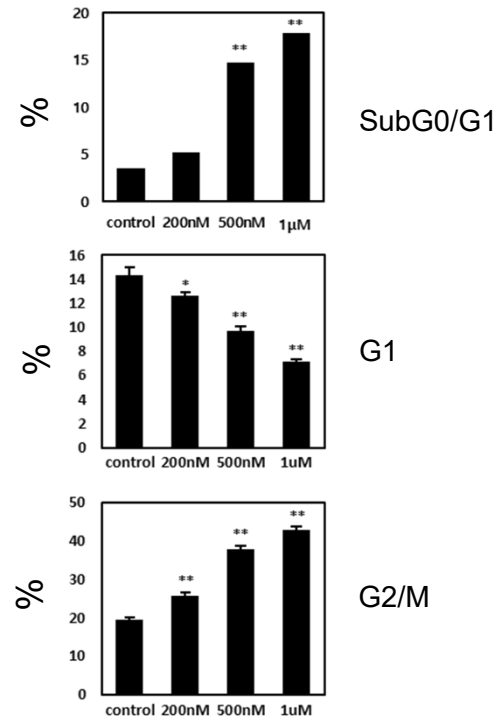


SW480, BCC

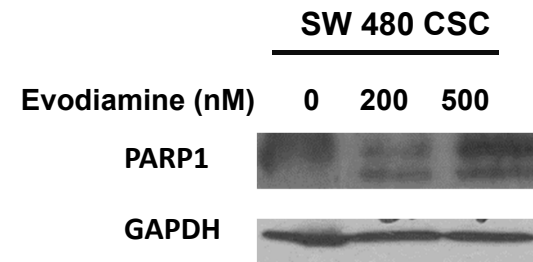
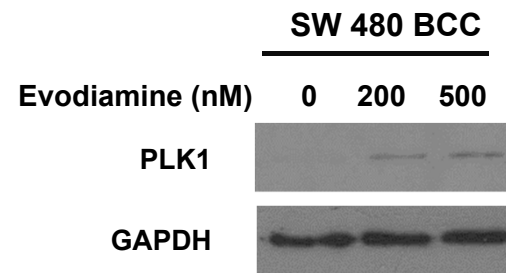
16HR



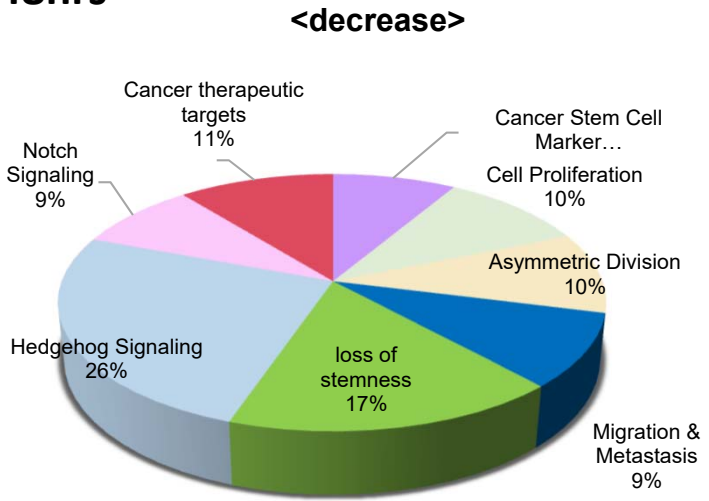
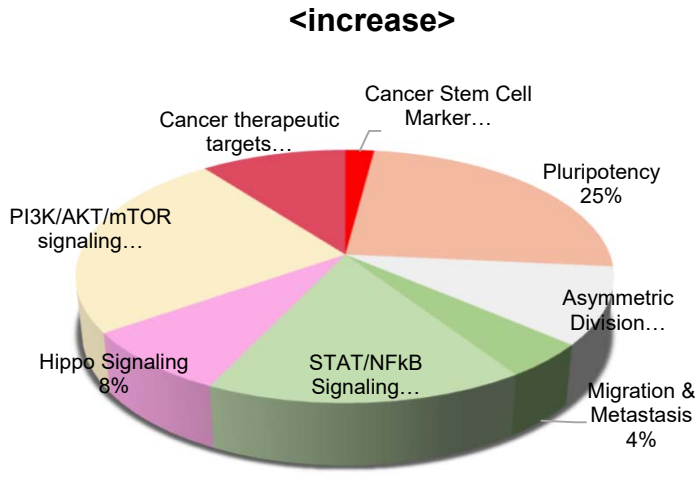
16HR



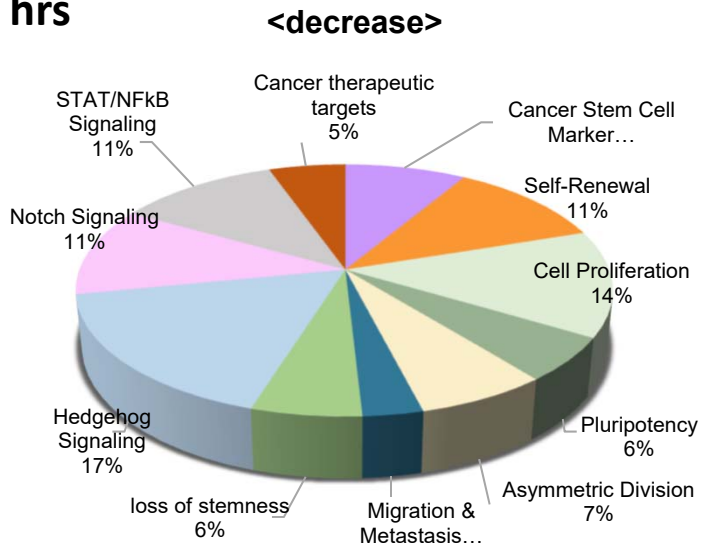
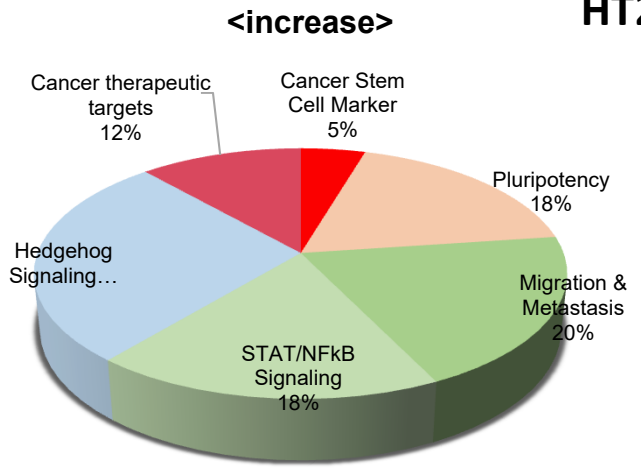
Supplementary Figure 4



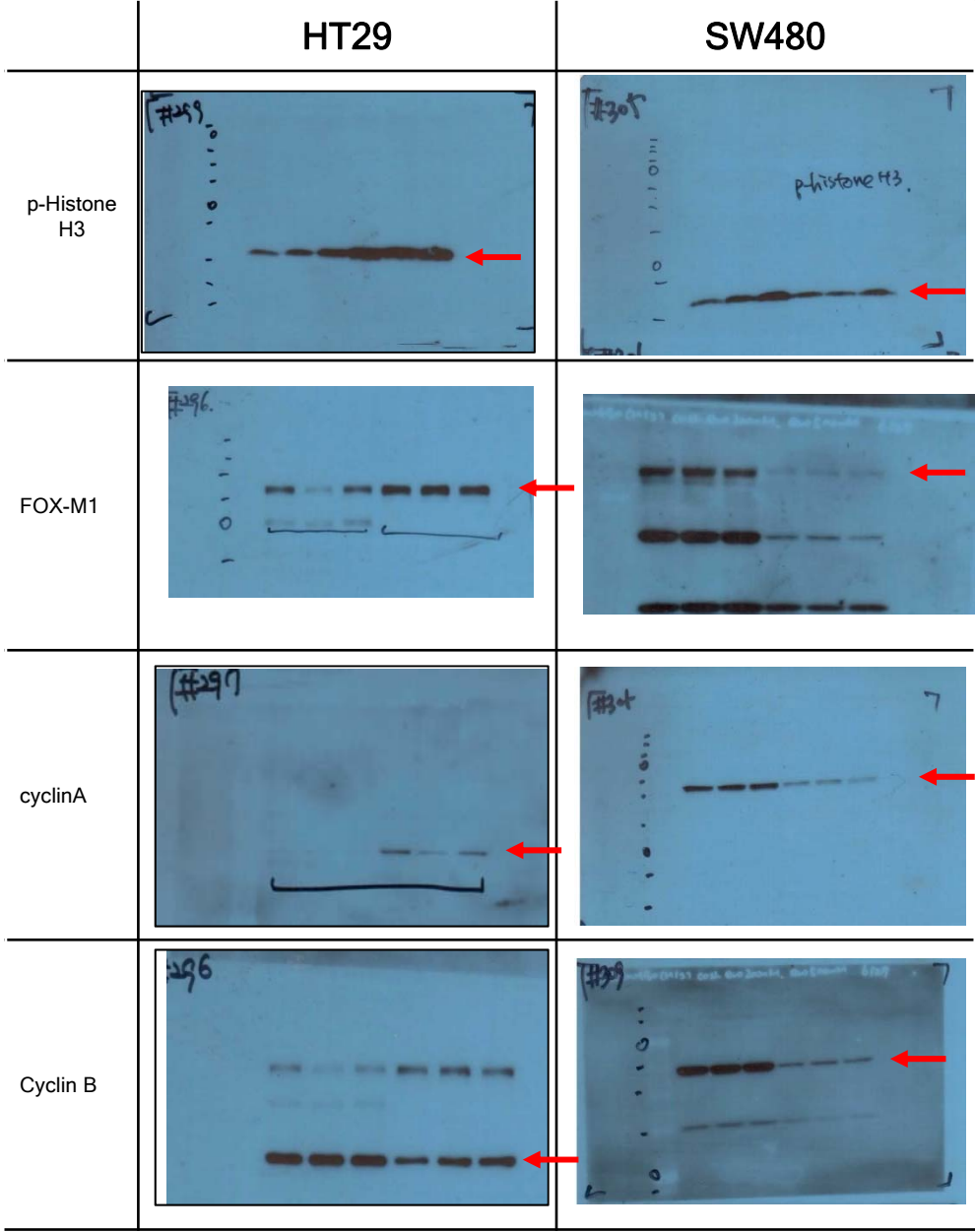
SW480 cells 48hrs



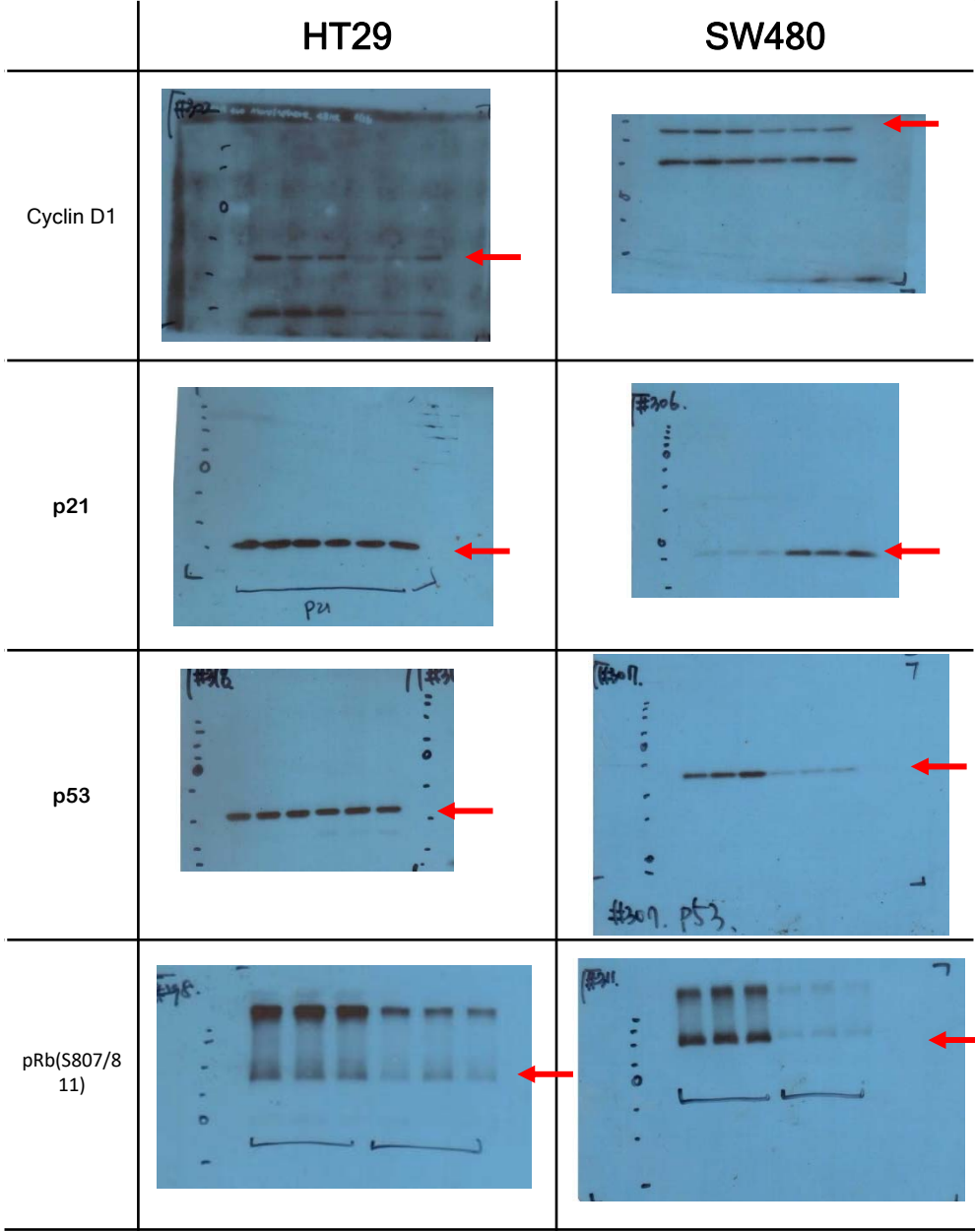
HT29 cells 72 hrs



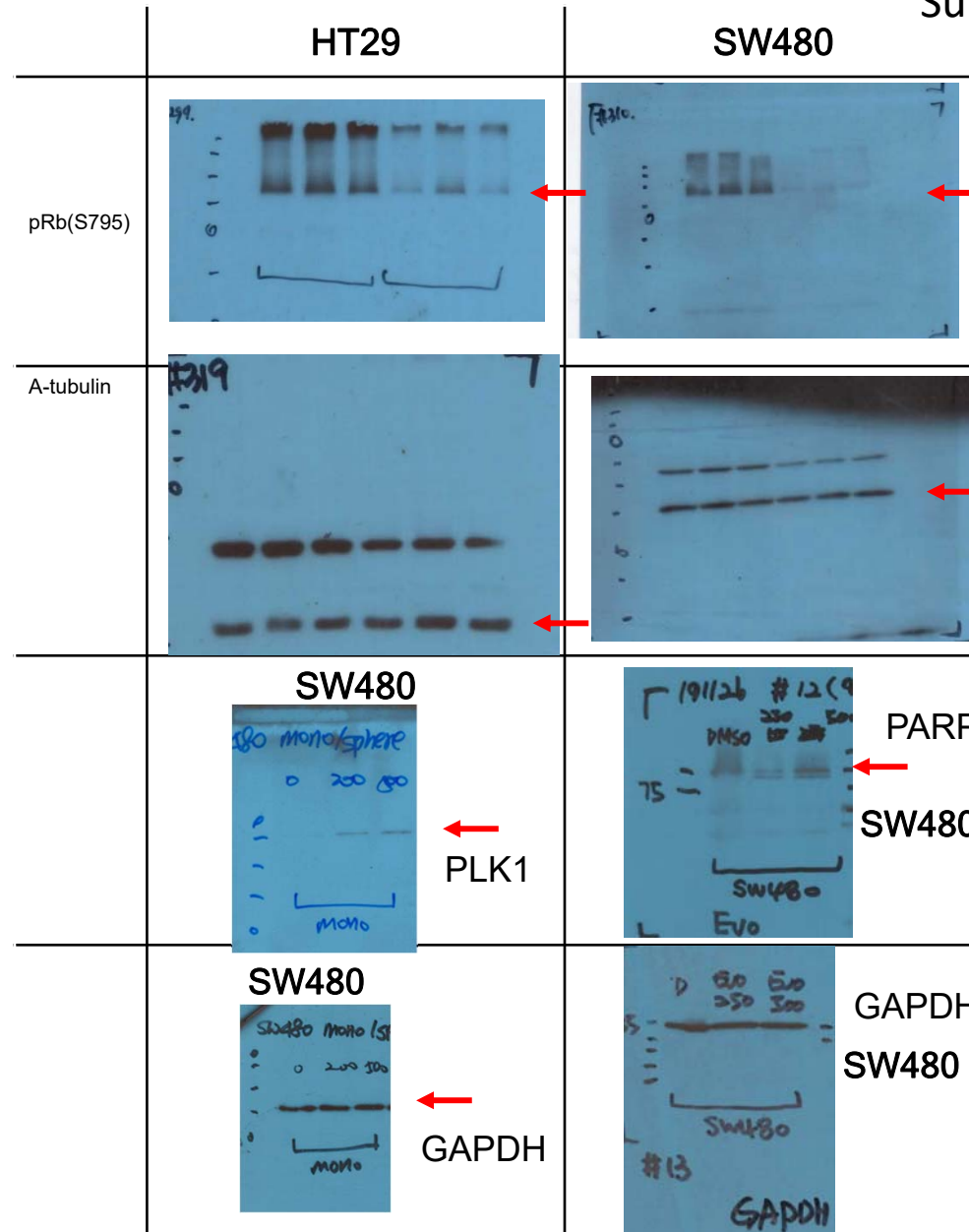
Supplementary Figure 6a



Supplementary Figure 6l



Supplementary Figure 6b



Supplementary Table 1. Realtime RT-PCR primer, used.

GENE	Sequence (5'→3')
CD133	F : TCA GTG AGA AAG TGG CAT CG R : TGT TGT GAT GGG CTT GTC AT
FGFR3	F : GAG AAC AAG TTT GGC AGA AT R : CGT CACTGT ACA CCT TGC AG
FZD9	F : TCC AGT ACG TGG AGA AGA GC R : CAT GGA GAG GAA GAT GAT GG
GAPDH	F : TGC ACC ACC AAC TGC TTA GC R : GGC ATG GAC TGT GGT CAT GAG
GLI1	F : CCC AAT CAC AAG TCA GGT TCC T R : CCT ATG TGA AGC CCT ATT TGC C
HES1	F : GAG CAC AGA AAG TCA TCA AAG CCT ATC R : GCC GGG AGC TAT CTT TCT TAA GTG C
HES5	F : TGG AGA AGG CCG ACA TCC T R : GGC GAC GAA GGC TTT GC
L32	F : CAA CAT TGG TTA TGG AAG CAA CA; R : TGA CGT TGT GGA CCA GGA ACT
LEF1	F : AGG AAC ATC CCC ACA CTG AC R : AGG TCT TTT TGG CTC CTG CT
LRP5	(PPH02315F-200, Qiagen)
NOTCH1	F : CAA CAT CCA GGA CAA CAT GG R : GGA CTT GCC CAG GTC ATC TA
SCD1	F : TGC CCA CCA CAA GTT TTC AG R : CAT CAG CAA GCC AGG TTT GT
SMO	(PPH02222C-200, Qiagen)

Supplementary Table 2. Antibody list

Abs	Manufacture	Cat. #
α-tubulin	Santa Cruise	sc23948
Cyclin A	Cell signaling	#4656
Cyclin B1	Cell signaling	#4138
Cyclin D1	Cell signaling	#2978
FoxM1	Cell signaling	#5436
P21	Cell signaling	#2947
P53	Santa Cruise	sc129
p-Histone H3	Cell signaling	#3377
pRB(S795)	Cell signaling	#9301
pRB(S807/S811)	Cell signaling	#856
Histone 3	LifeSpan Bioscience	LS-C413067
PLK-1	Santa Cruise	sc55504