

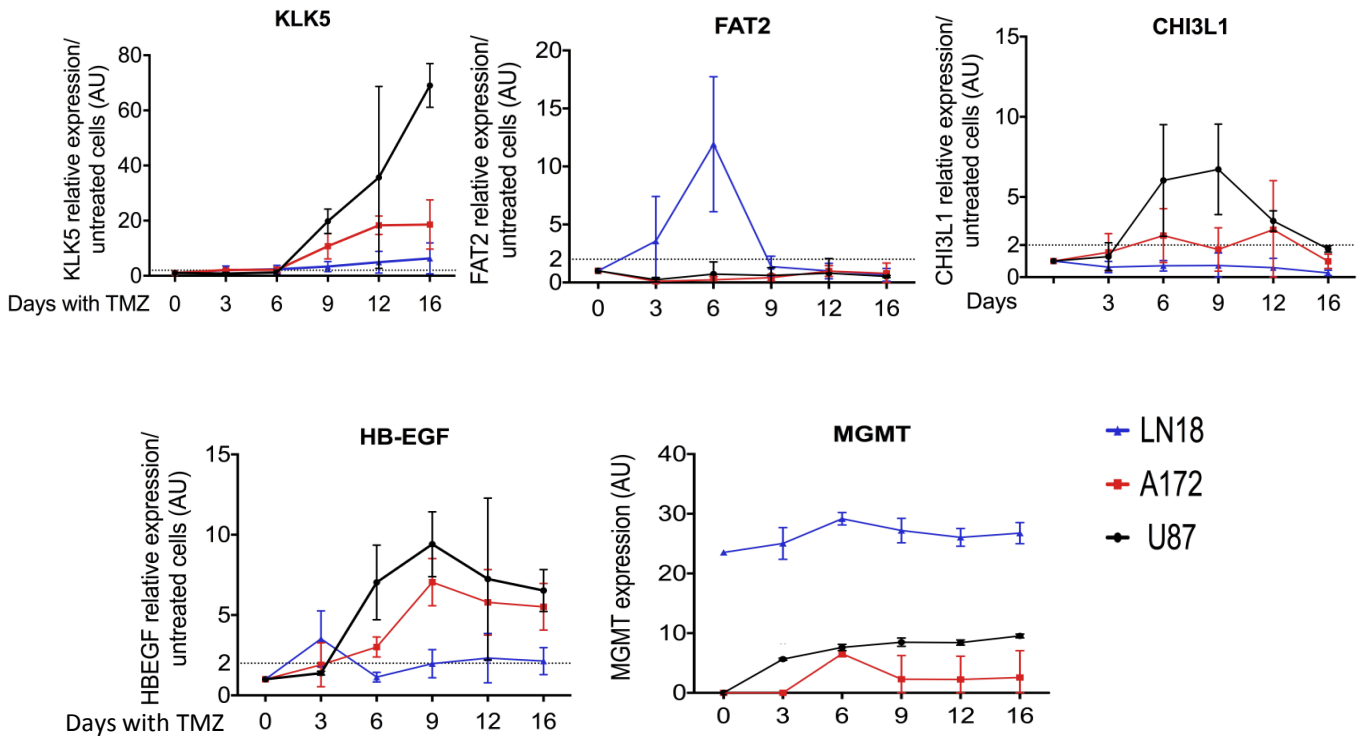
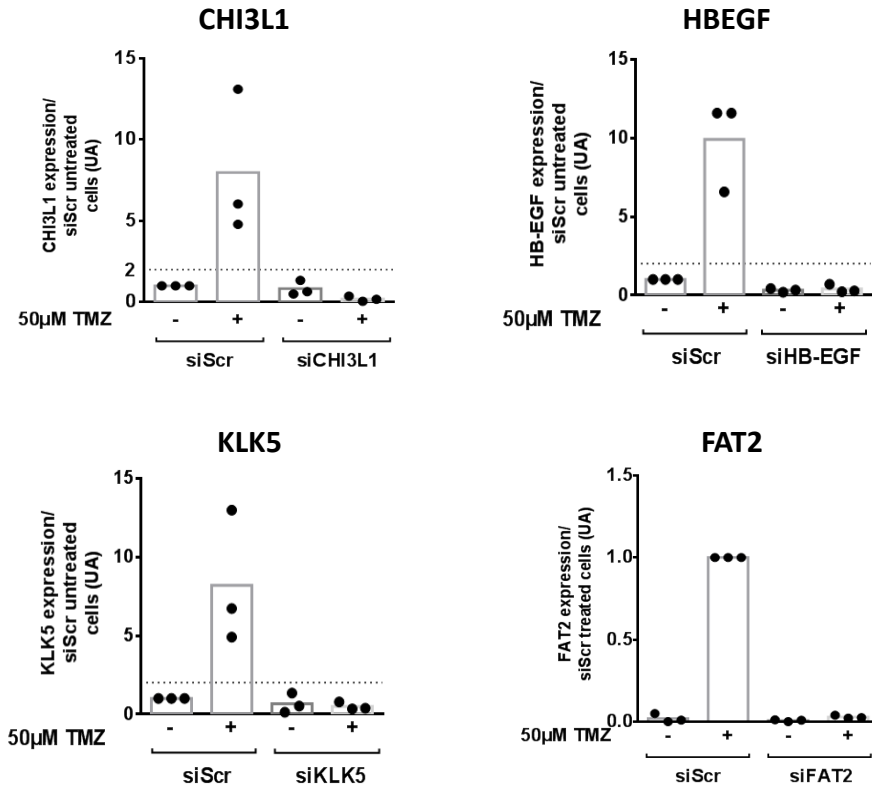
A**B**

Figure S6 (A) KLK5, CHI3L1, FAT2, HB-EGF and MGMT expression in A172, U87, LN18 cell lines treated respectively by 50, 250 and 350 μM TMZ over 16 days (RT-qPCR).

(B) Expression of CHI3L1, HB-EGF, KLK5, and FAT2 in U251^S cells knocked down for the respective gene with si RNA (RTqPCR). N=3