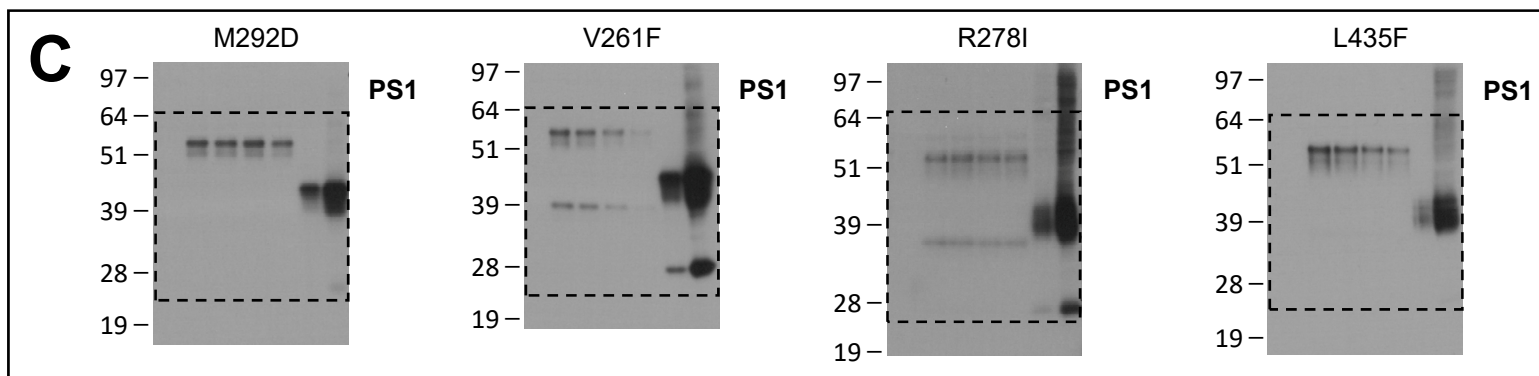


B V44 CL efficiency (Rel. to DMSO-treated)

	DMSO								50 nM RO7019009								500 nM RO7019009								2500 nM RO7019009																				
WT	1	1	1	1	1	1	1	1	0.89	0.87	0.99	1.03	0.92	0.78	1.05	1.03	1.06	1.1	1.45	0.76	0.83	0.8	0.83	0.7	0.41	0.82	0.85	1	1.02	1.37	0.61	0.45	0.49	0.39	0.4	0.26	0.48	0.66	0.79	0.58	0.58				
L166P																																													
Y256S																																													
G382A	1	1	1	1	1	1	1	1	0.89	0.98	1.06	1.29	1.22	0.94	0.64	0.79	0.93	0.74	1.11	0.83	1.06	0.89	0.91	0.76	0.81	0.67	0.6	0.91	0.78	1	0.49	0.9	0.52	0.66	0.59										



D V44 CL efficiency (Rel. to DMSO-treated)

	DMSO								50 nM RO7019009								500 nM RO7019009								2500 nM RO7019009																				
M292D	1	1	1	1	1	1	1	1	1.08	1.28	1.08	1.22	1.32	0.95	0.57	1.17	0.78	0.97	0.95	0.8	1.01	0.74	1.04	0.65	1.1	0.61	0.88	0.99	0.88	0.64	0.65	0.81	0.43	0.55	0.38										
V261F																																													
R278I																																													
L435F	1	1	1	1	1	1	1	1	1	0.7	1.05	0.85	0.94	1.24	0.85	1.13	1.06	0.58	0.73	0.62	0.67	0.75	0.63	0.93	1.08	0.52	0.42	0.6	0.71	0.75	0.58	0.47													