

Journal of Plant Research

Online Resources

Complex origins of chloroplast membranes with photosynthetic machineries: Multiple transfers of genes from divergent organisms at different times or a single endosymbiotic event?

Naoki Sato

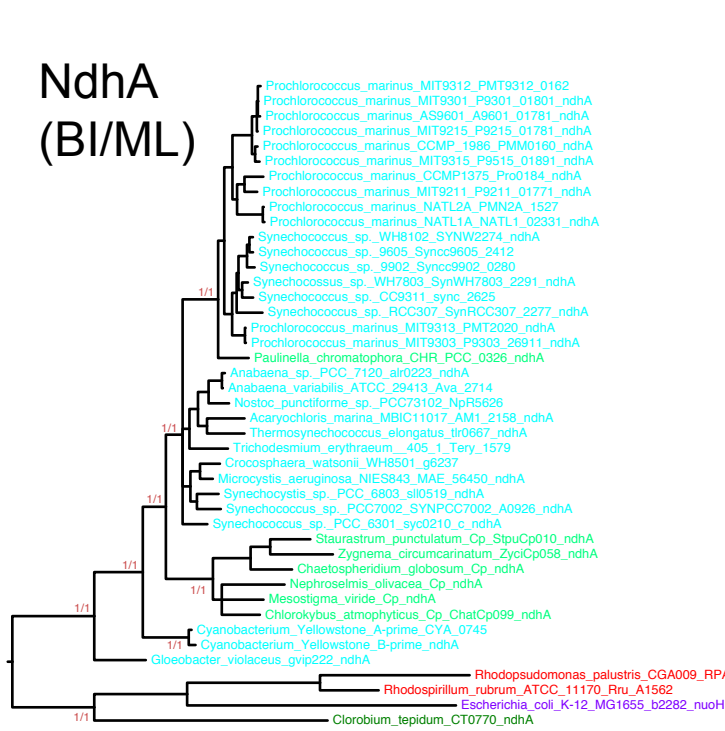
University of Tokyo

naokisat@bio.c.u-tokyo.ac.jp

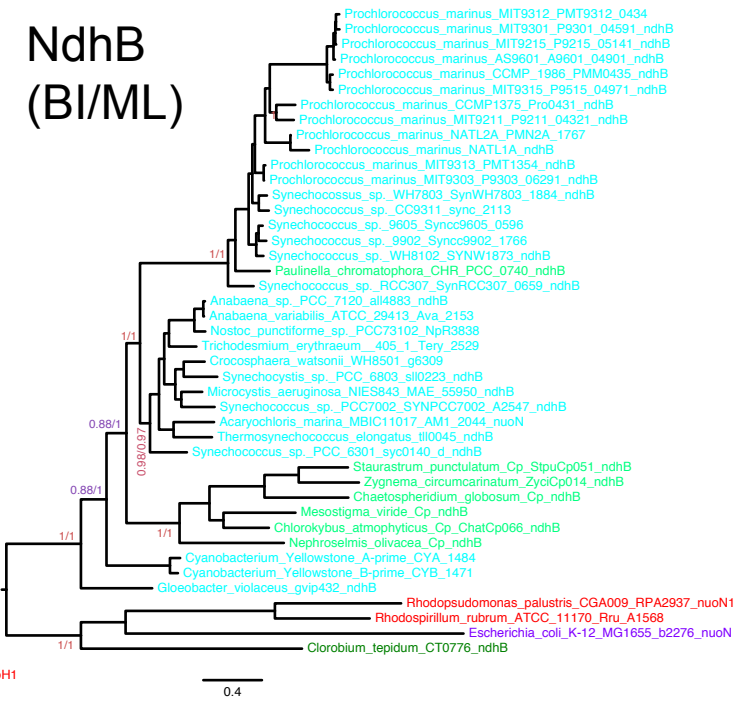
Online Resource 5. Phylogenetic trees of Ndh proteins.

Nine components of the chloroplast Ndh complex, A, B, C, E, F, G, H, I, and K are analyzed, either individually or as a catenated sequences. The sequences were retrieved from Gclust dataset CPBACT10. Phylogeny of NdhD was complicated because of many paralogs, whereas NdhJ was not present in *Nephroselmis*. These two subunits were not analyzed with other subunits, but individual trees were constructed based on Gclust dataset CyanoClust 4.

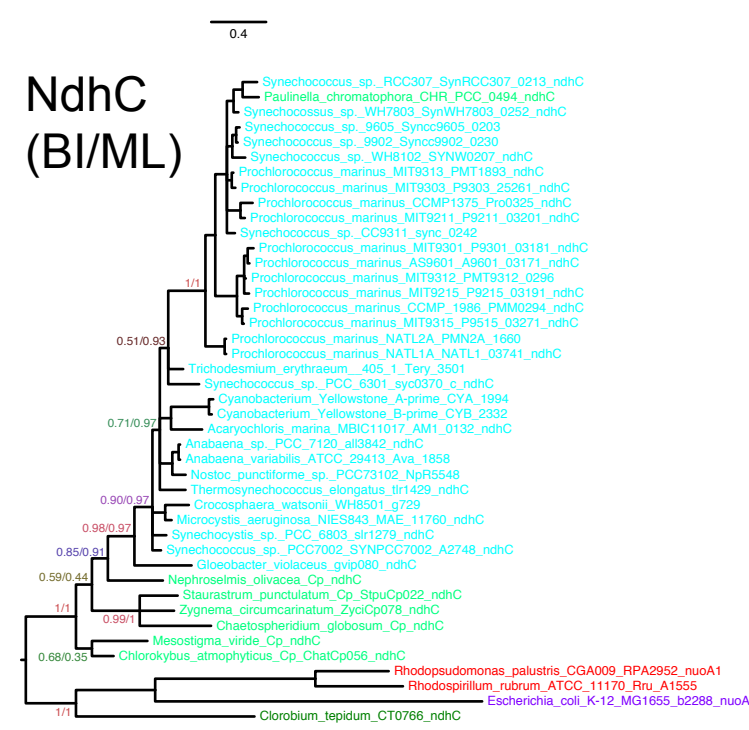
NdhA (BI/ML)



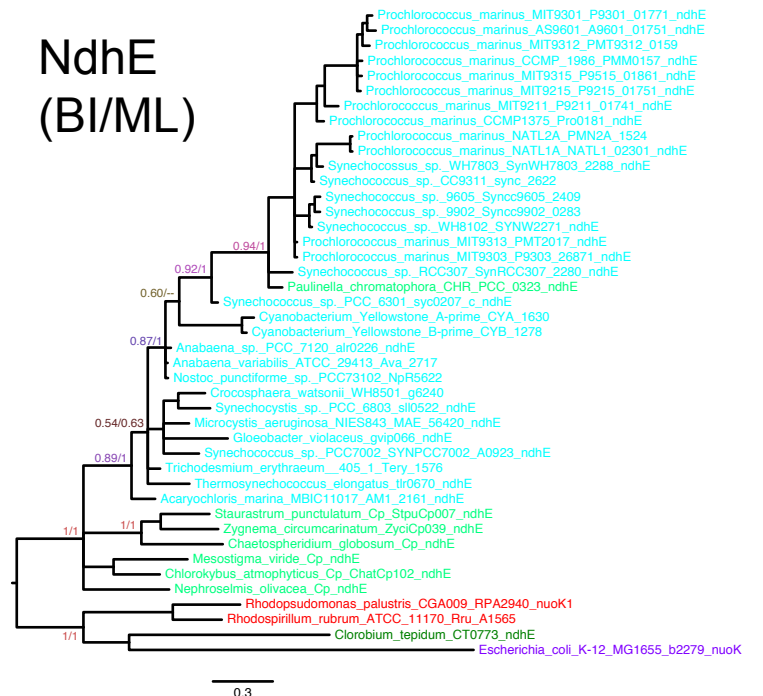
NdhB (BI/ML)



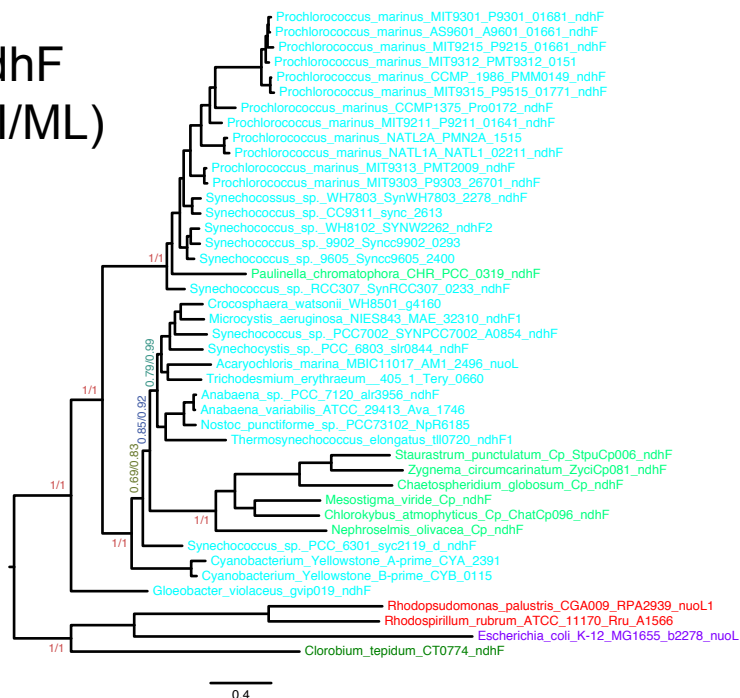
NdhC (BI/ML)



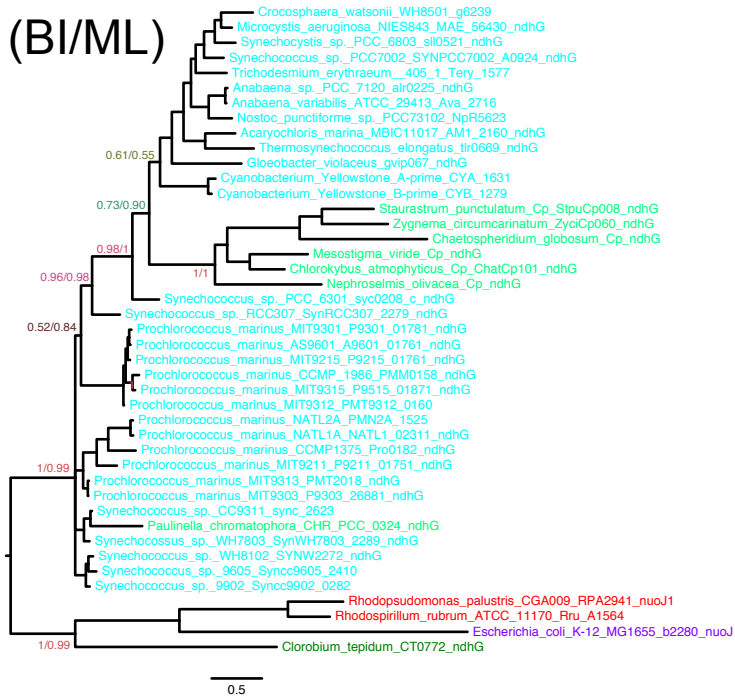
NdhE (BI/ML)



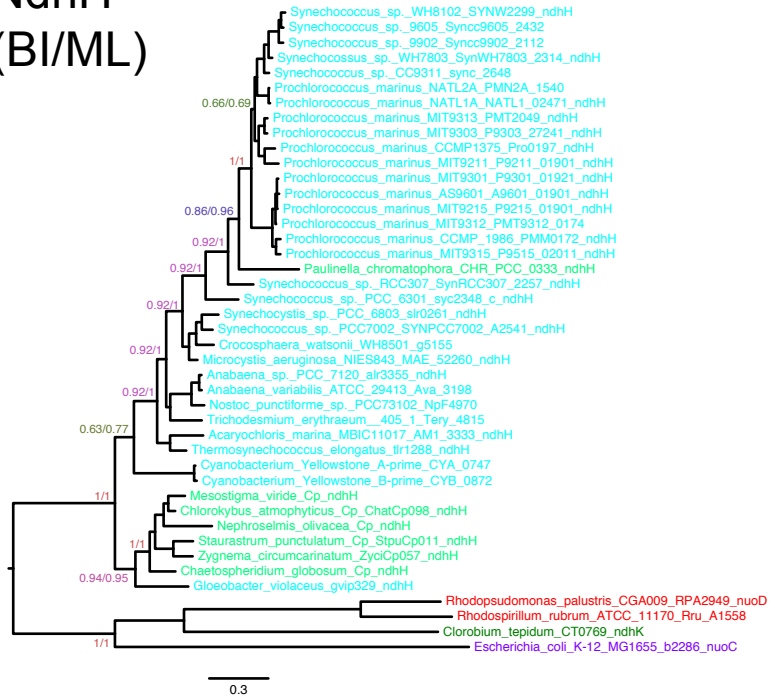
NdhF (BI/ML)



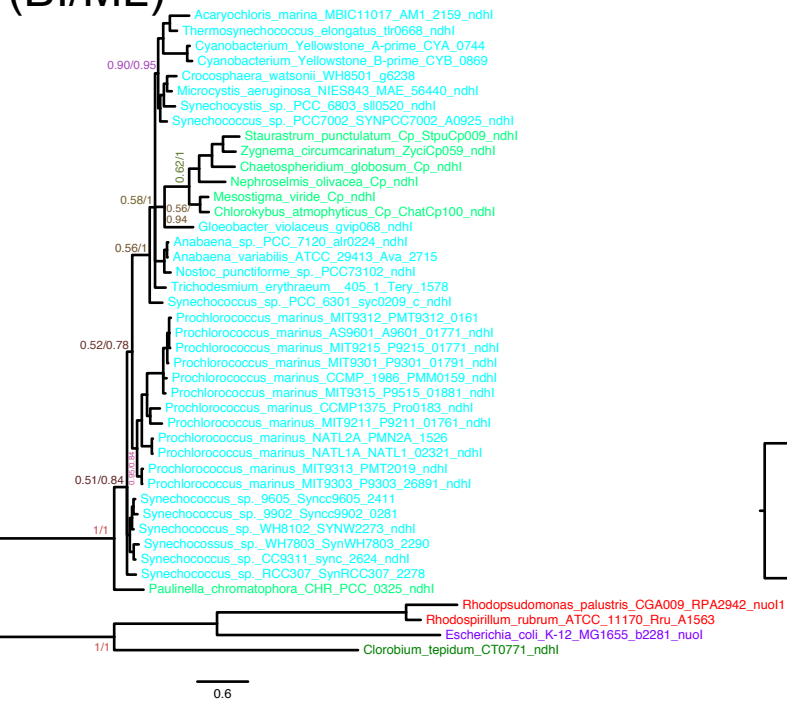
NdhG (BI/ML)



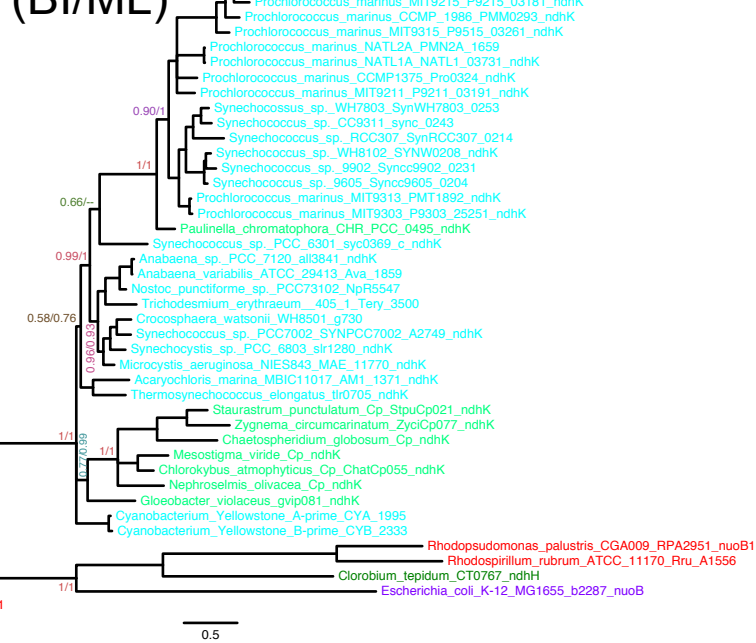
NdhH (BI/ML)



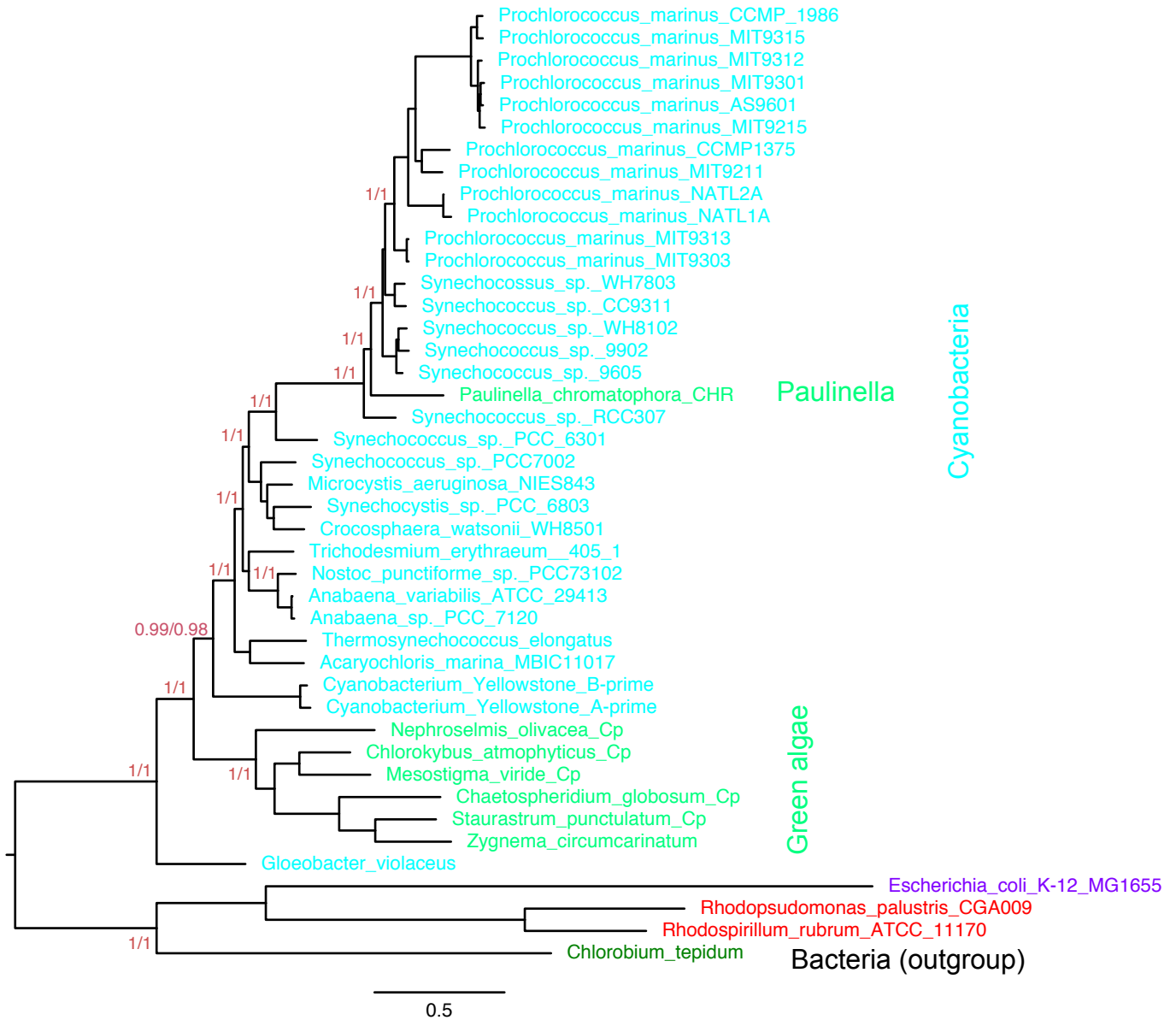
NdhI (BI/ML)



NdhK (BI/ML)



NDH all subunits
(BI/ML)



NdhD
(BI/ML)



NdhJ
(BI/ML)

