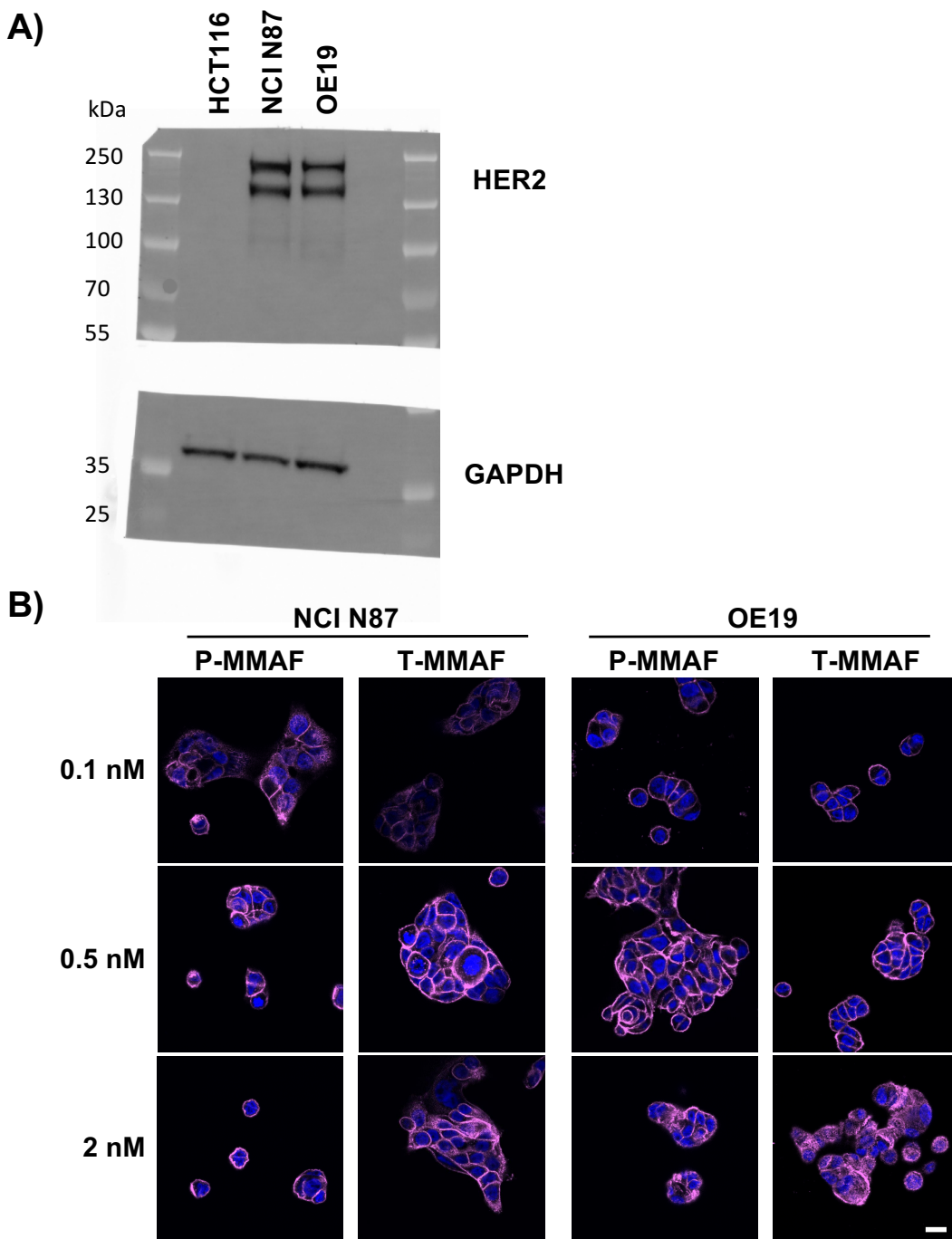


## Supplementary Figure 2



**Supplementary Figure 2: Cell line HER2 expression and Anti-HER2 antibody drug conjugate binding. A)** Uncropped original immunoblot for total HER2 and GAPDH in whole cell lysates of indicated cell lines. MW markers (kDa) on left. **B)** HER2 expressing cells (NCI N87 and OE19) were exposed to 0.1, 0.5 or 2 nM of Cy5 labeled P-MMAF or T-MMAF for 30 minutes then incubated in drug free media. Cells were fixed at 2 hrs and imaged for Cy5 fluorescence (magenta). Nuclei stained with DAPI (blue). Scale bar, 10  $\mu$ m.