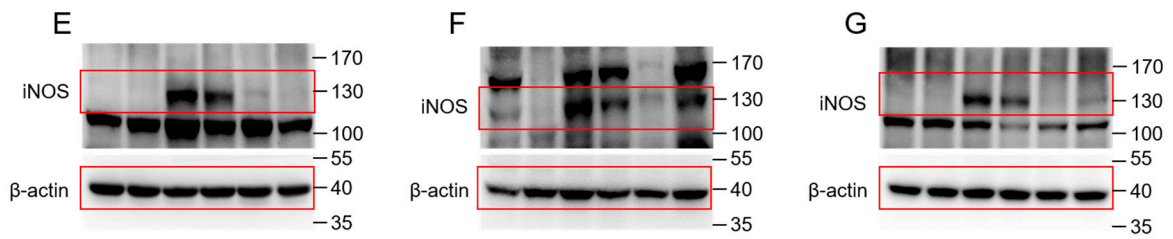
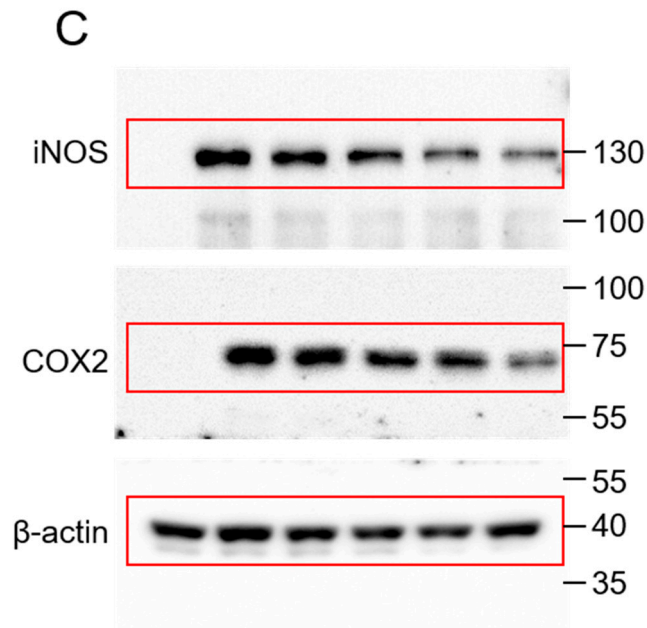


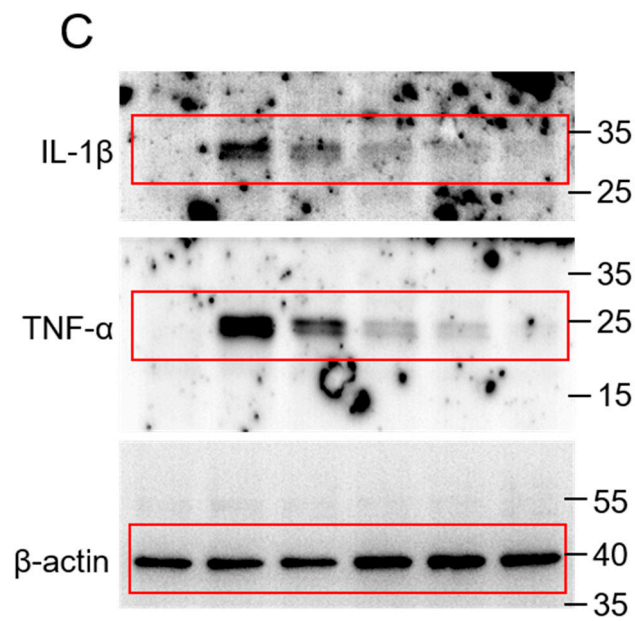
**Figure S1.** Uncropped images of blots presented in the main Figures 2.



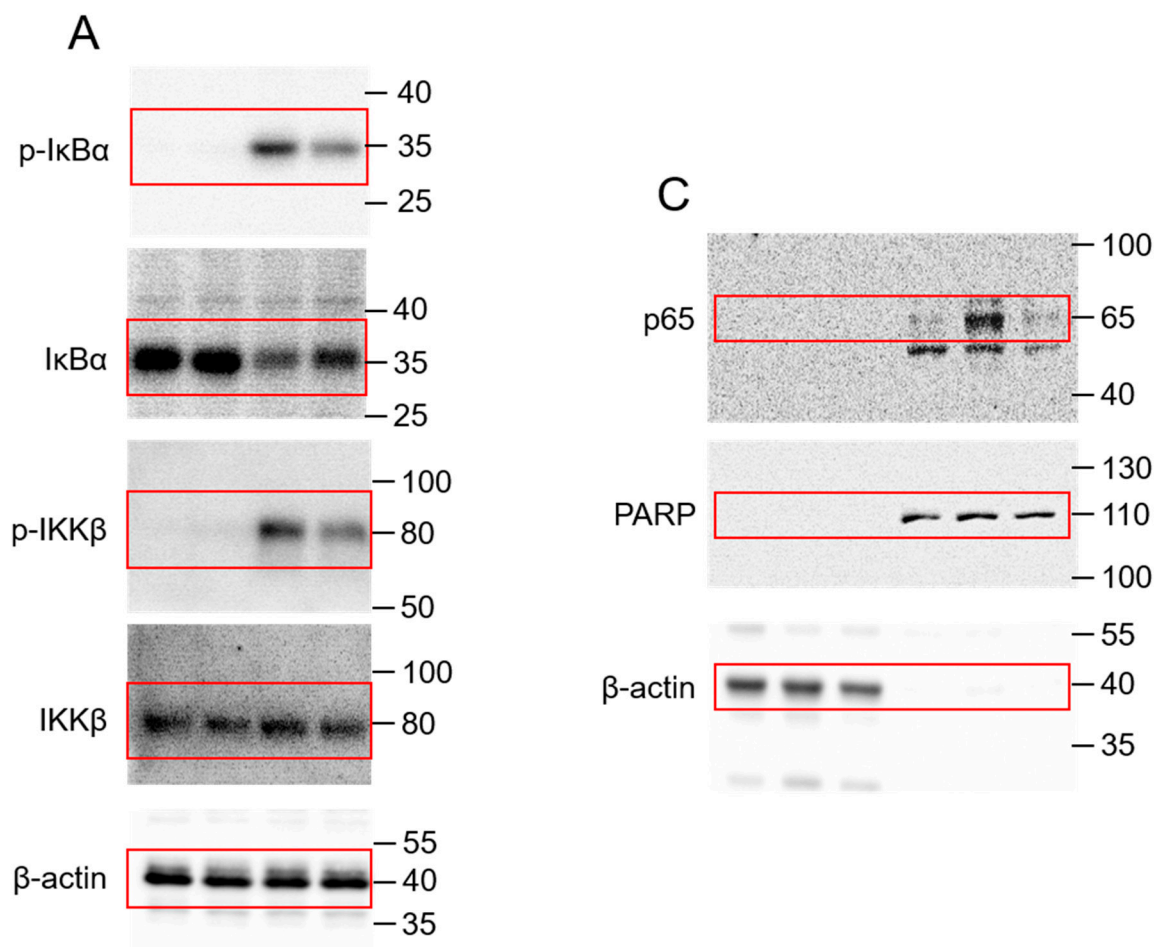
**Figure S2.** Uncropped images of blots presented in the main Figures 3.



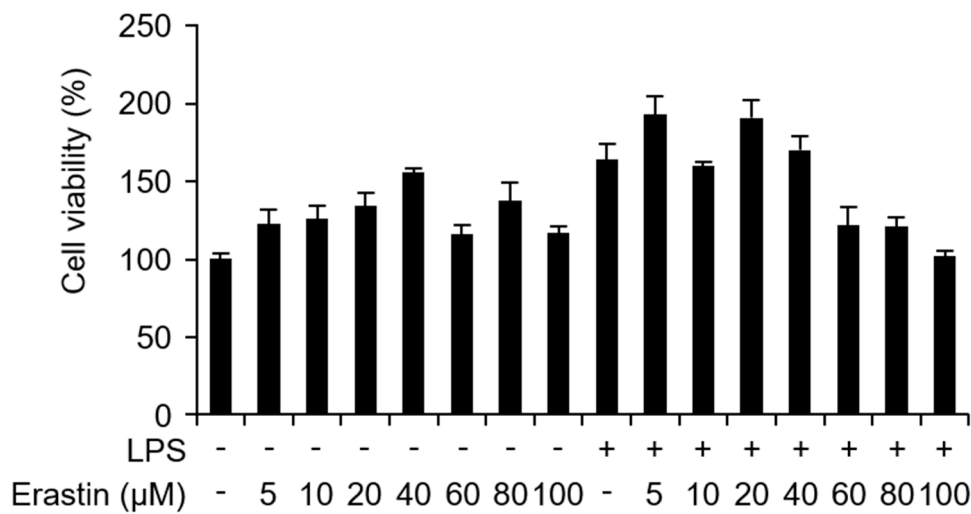
**Figure S3.** Uncropped images of blots presented in the main Figures 4.



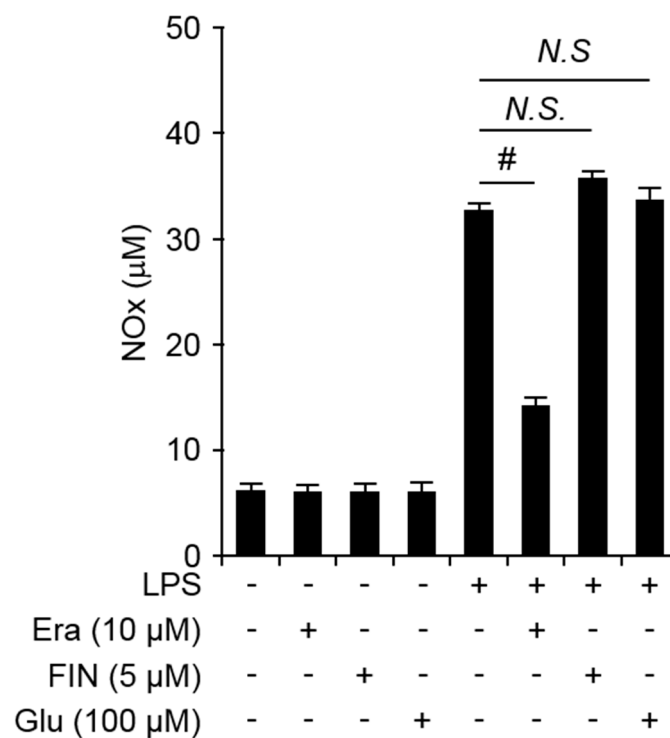
**Figure S4.** Uncropped images of blots presented in the main Figures 5.



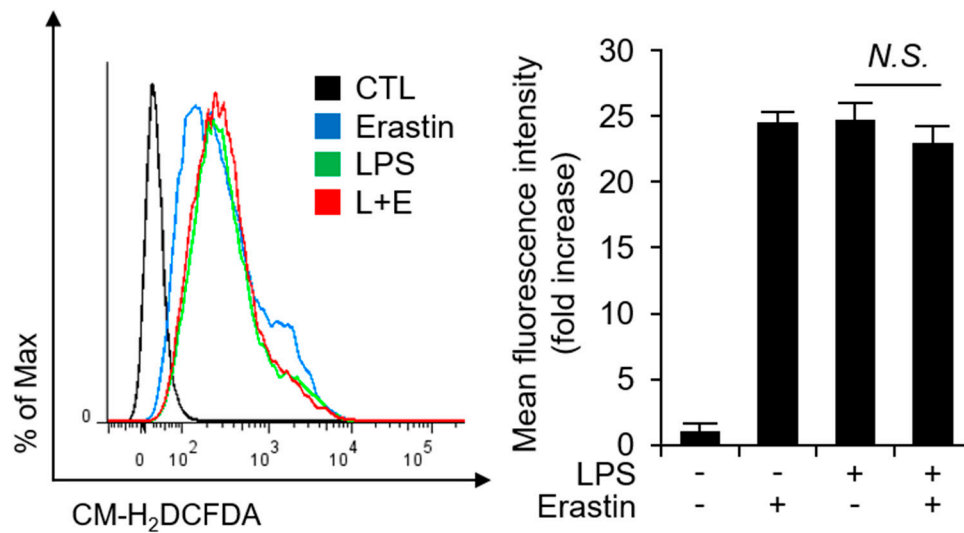
**Figure S5.** Uncropped images of blots presented in the main Figures 6.



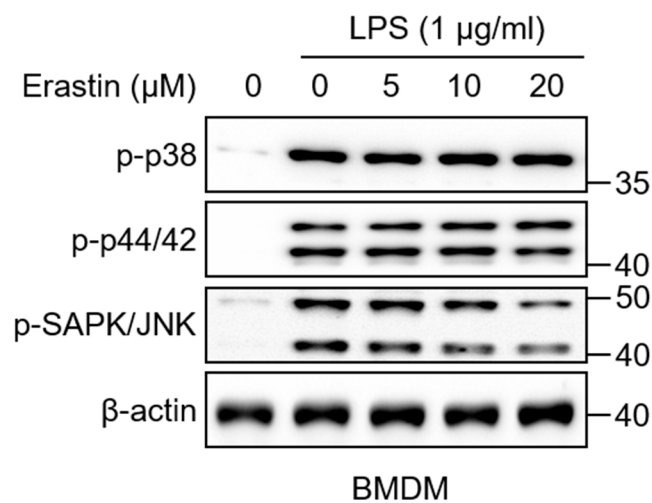
**Figure S6.** Measuring of erastin-induced cytotoxicity in bone marrow-derived macrophages (BMDMs). Cell viability assay was conducted to determine the dose-dependent effects of erastin in bone marrow-derived macrophages (BMDMs). BMDMs were cultured for 24h with indicated doses of erastin with or without 1 μg/ml of LPS stimulation.



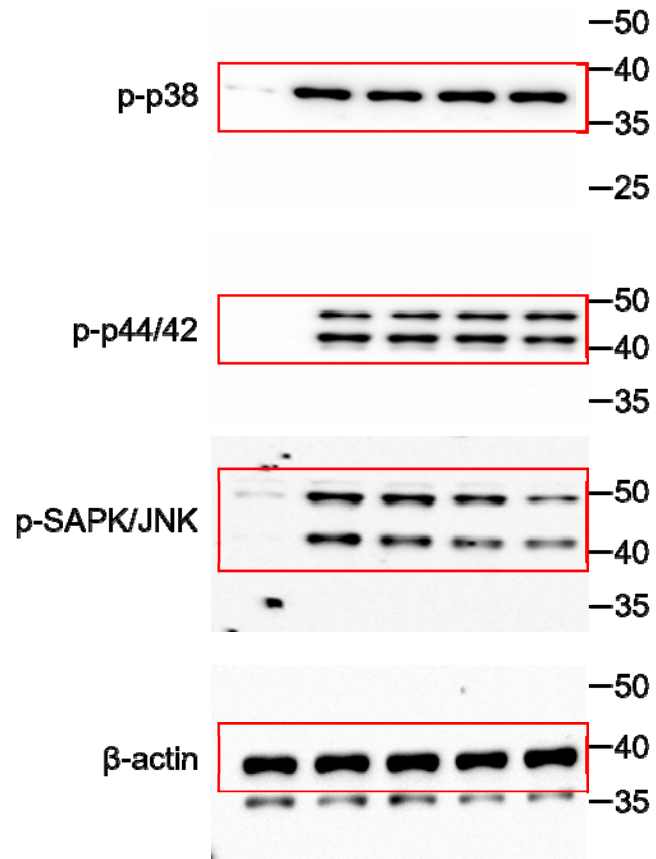
**Figure S7.** FIN65 and glutamic acid, do not exert anti-inflammatory effects. Nitric oxide (NO) metabolite secretion was measured after incubation with 1 μg/ml of LPS for 24 h with or without various ferroptosis inducers such as erastin (Era), FIN56 (FIN), and glutamic acid (Glu) in bone marrow-derived macrophages (BMDMs) at the indicated dose. Statistical analyses were performed by the paired two-tailed Student's *t*-test. \**p* < 0.05, #*p* < 0.01.



**Figure S8.** LPS and erastin promotes the production of intracellular reactive oxygen species (ROS). BMDMs were treated with 1  $\mu$ g/ml of LPS for 2h in the presence or absence of DMSO or 20 $\mu$ M erastin. Cells were stained with CM-H<sub>2</sub>DCFDA to detect the production of ROS. Graph represents mean fluorescence intensity of three independent experiments.



**Figure S9.** Erastin does not affect LPS-induced MAPK activation in BMDMs. Western blot analysis of p-p38, p-p44/42, and p-SAPK/JNK after pre-incubation with or without erastin at the indicated dose for 2 h and following stimulation with 1  $\mu$ g/ml of LPS for 1 h using bone marrow-derived macrophages (BMDMs);  $\beta$ -actin was used as a loading control.



**Figure S10.** Uncropped images of blots presented in the main Supplementary Figures 3.