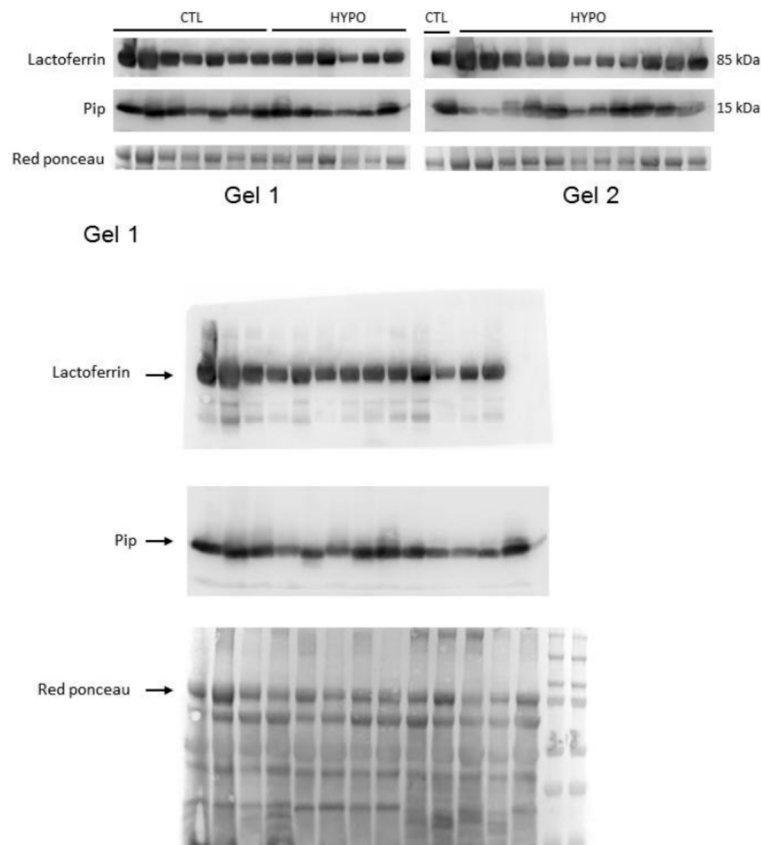


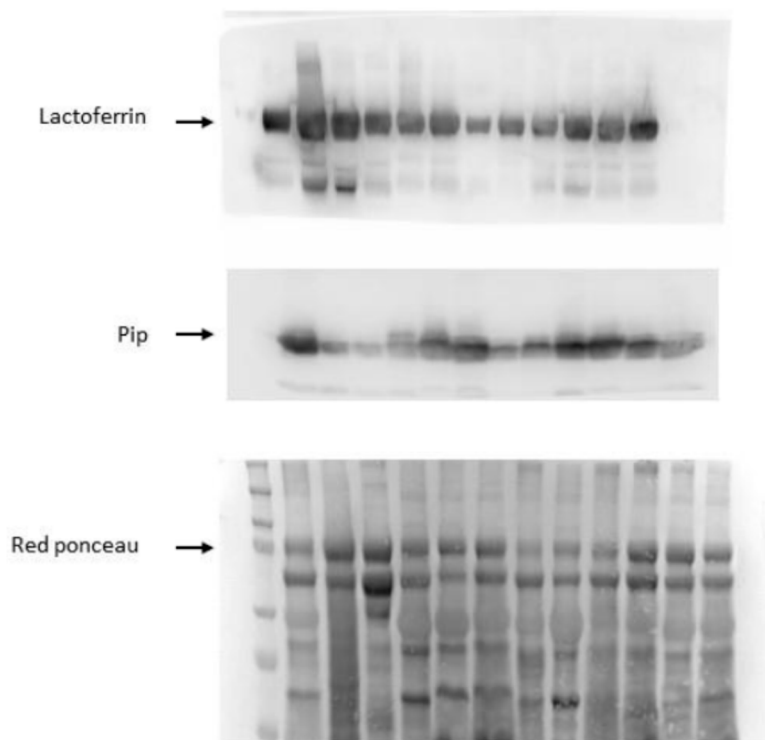
	Hypogonadic Patients (N=7)	Range values
Age	41.35 ± 12.25	
Testosterone (T)	1.72 ± 0.76	2.5-8.4 ng/ml
Estradiol (E2)	24.06 ± 3.44	15-44 pg/ml
SHBG	18.68 ± 5.31	16-80 nmol/L
FSH	1.63 ± 0.94	1.0-8.0 mU/ml
LH	0.84 ± 0.35	2.5-10.0 mU/ml
Seminal volume	1.48 ± 0.98 ml	
Sperm concentration	3.54 ± 4.54 × 10 ⁶ /ml	
Total sperm motility	9.36 ± 11.32 %	
Normal morphology	3.15 ± 3.07 %	

Supplementary Table 1. Clinical and hormonal parameters of the population of 7 additional hypogonadic patients furtherly added in western blot analysis.

Supplementary Figure 1. Picture of all gels after enhanced chemiluminescence, all pictures of membranes after red ponceau staining and western blot membrane with detected bands.



Gel 2



Supplementary Figure 2. Quantification analysis of western blot

Quantification WB Figure 1

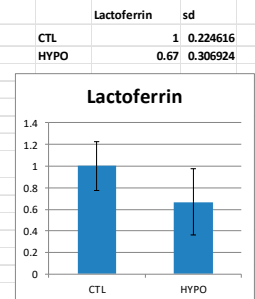
red ponceau				
Number	Vol. %	Volume	Height	Area
ctl	0.793	3.62E+08	42740	15750
ctl	1.313	6.01E+08	49170	18270
ctl	0.98	4.48E+08	38200	17514
ctl	1.015	4.64E+08	34648	18522
ctl	1.049	4.8E+08	39229	17010
ctl	1.019	4.66E+08	34248	18774
ctl	1	4.57E+08	38098	16632
hypo	1.119	5.12E+08	37145	19404
hypo	1.004	4.59E+08	40029	16506
hypo	1.224	5.6E+08	46112	18396
hypo	0.935	4.28E+08	30544	19530
hypo	0.681	3.11E+08	29776	16632
hypo	0.988	4.52E+08	36782	19908

0.793
1.313
0.98
1.015
1.049
1.019
1
1.119
1.004
1.224
0.935
0.681
0.988
1.744
1.784
1.535
1.599
1.734
1.186
1.267
1.359
1.757
1.472
1.388

Lactoferrin				
Number	Vol. %	Volume	Height	Area
ctl	1.248	1.1E+08	31563	6241
ctl	1.195	1.06E+08	22802	6715
ctl	1.082	95741629	24224	6715
ctl	1.003	88678987	26280	6715
ctl	1.158	1.02E+08	30653	5925
ctl	0.976	86358556	25079	6873
ctl	1	88456183	26269	6557
hypo	1.132	1E+08	26410	7031
hypo	1.031	91230925	27439	6478
hypo	1.301	1.15E+08	38866	6320
hypo	0.699	61860109	25049	6399
hypo	0.983	86981185	31127	5925
hypo	1.19	1.05E+08	31026	7189

1.248
1.195
1.082
1.003
1.158
0.976
1
1.132
1.031
1.301
0.699
0.983
1.19
0.971
0.951
0.82
0.779
0.934
0.533
0.689
0.602
0.926
0.729
1.018

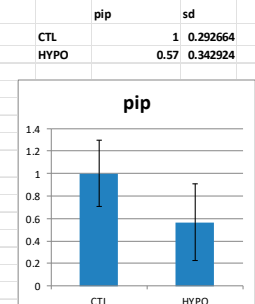
Lactoferrin/red ponceau	M	sd	T
	1.57	1.091124	0.224616
	0.91		**
	1.10		
	0.99		
	1.10		
	0.96		
	1.00		
	1.01	0.725805	0.306924
	1.03		
	1.06		
	0.75		
	1.44		
	1.20		
	0.56		
	0.53		
	0.53		
	0.49		
	0.54		
	0.45		
	0.54		
	0.602		
	0.53		
	0.50		
	0.73		



pip				
Number	Vol. %	Volume	Height	Area
No 1	1.262	2.73E+08	50915	16714
No 2	1.345	2.91E+08	47547	13426
No 3	1.04	2.25E+08	43872	13152
No 4	0.686	1.48E+08	32658	12467
No 5	0.915	1.98E+08	41238	12330
No 6	0.819	1.77E+08	35675	12741
No 7	1	2.16E+08	45424	11645
No 8	1.27	2.75E+08	48268	13289
No 9	0.957	2.07E+08	46356	12467
No 10	0.657	1.42E+08	38891	11782
No 11	0.602	1.3E+08	34104	13152
No 12	0.698	1.51E+08	41207	12467
No 13	1.298	2.81E+08	51267	14111

1.262
1.345
1.04
0.686
0.915
0.819
1
1.27
1.27
0.957
0.657
0.602
0.698
1.298
0.35
0.202
0.387
0.696
0.861
0.337
0.486
0.81
0.849
0.668
0.51

pip/red ponceau	M	sd	T
	1.59	1.004125	0.292664
	1.02		**
	1.06		
	0.68		
	0.87		
	0.80		
	1.00		
	1.13	0.569031	0.342924
	0.95		
	0.54		
	0.64		
	1.02		
	1.31		
	0.20		
	0.11		
	0.25		
	0.44		
	0.50		
	0.28		
	0.38		
	0.60		
	0.48		
	0.45		
	0.37		



pip				
Number	Vol. %	Volume	Height	Area
No 1	1	3.04E+08	45702	15892
No 2	0.35	1.07E+08	29497	11782
No 3	0.202	61612890	16378	11508
No 4	0.387	1.18E+08	21001	12878
No 5	0.696	2.12E+08	35287	12878
No 6	0.861	2.62E+08	42588	14111
No 7	0.337	1.03E+08	28632	10686
No 8	0.486	1.48E+08	35763	12330
No 9	0.81	2.46E+08	46174	12604
No 10	0.849	2.58E+08	42997	13426
No 11	0.668	2.03E+08	38490	13426
No 12	0.51	1.55E+08	25508	16440

