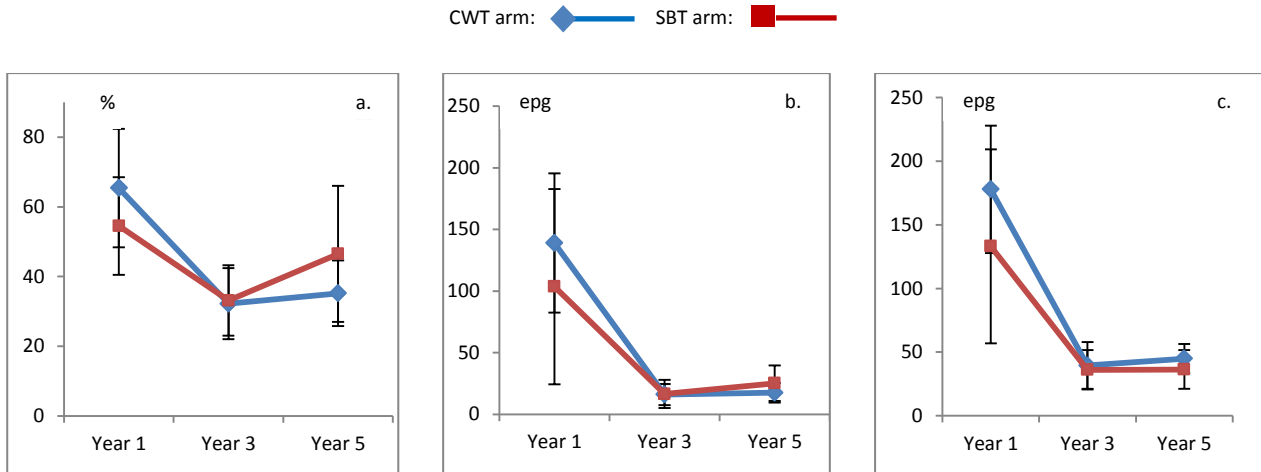
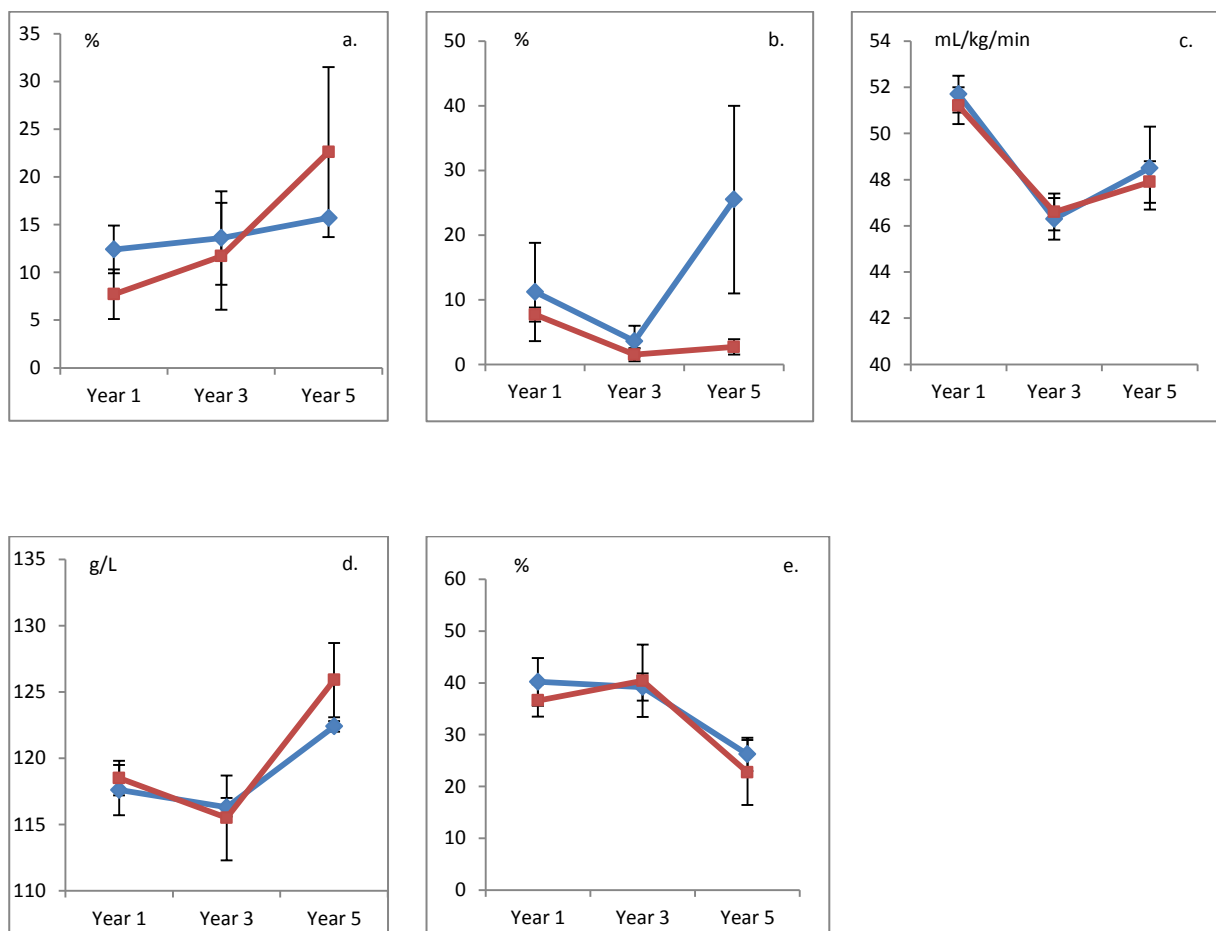


The following are supplemental materials and will be published online only



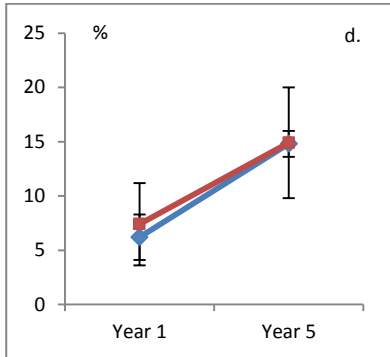
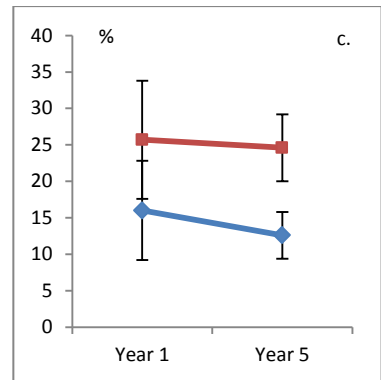
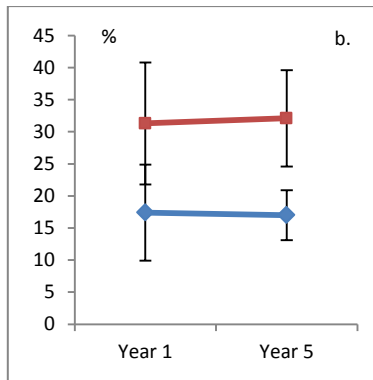
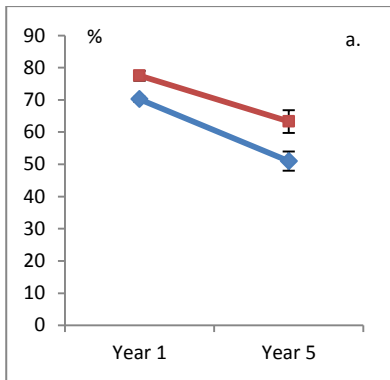
Supplemental Figure S1. Prevalence of *Schistosoma mansoni* infection (a.), village-level mean intensity (b.), and individual-level mean intensity (c.) in year 1, 3 and 5 in the community-wide treatment (CWT) and school-based treatment (SBT) arms; error bars indicate standard deviation; epg = eggs per gram feces

CWT arm:  SBT arm: 



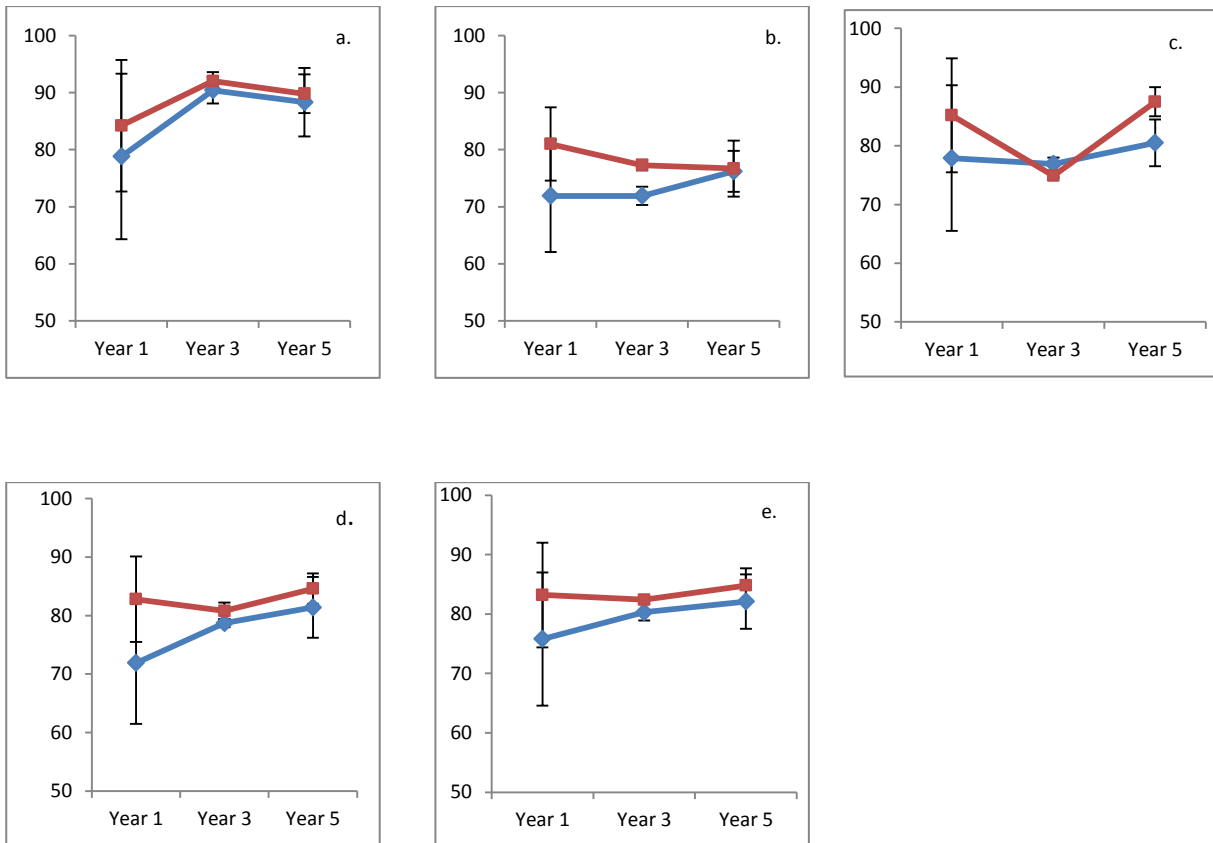
Supplemental Figure S2. Prevalence of stunting (height-for-age Z-score of < -2 SD) (a.) and wasting (BMI-for-age Z-score of < -2 SD) (b.), physical fitness as maximal oxygen uptake (VO_2 max) (c.), hemoglobin level (d.), and prevalence of anemia (e.) in year 1, 3 and 5 in the community-wide treatment (CWT) and school-based treatment (SBT) arms; error bars indicate standard deviation

CWT arm:  SBT arm: 



Supplemental Figure S3. Prevalence of hepatomegaly (a.), splenomegaly (b.), hepatosplenomegaly (c.), and enlarged portal vein diameter (d.) in year 1 and 5 in the community-wide treatment (CWT) and school-based treatment (SBT) arms; error bars indicate standard deviation

CWT arm:  SBT arm: 



Supplemental Figure S4. Pediatric quality-of-life (PedsQL) scores from 0 to 100 in year 1, 3 and 5 in the community-wide treatment (CWT) and school-based treatment (SBT) arms in the four categories of physical (a.), emotional (b.), social (c.), school (d.), and total score (e.); error bars indicate standard deviation