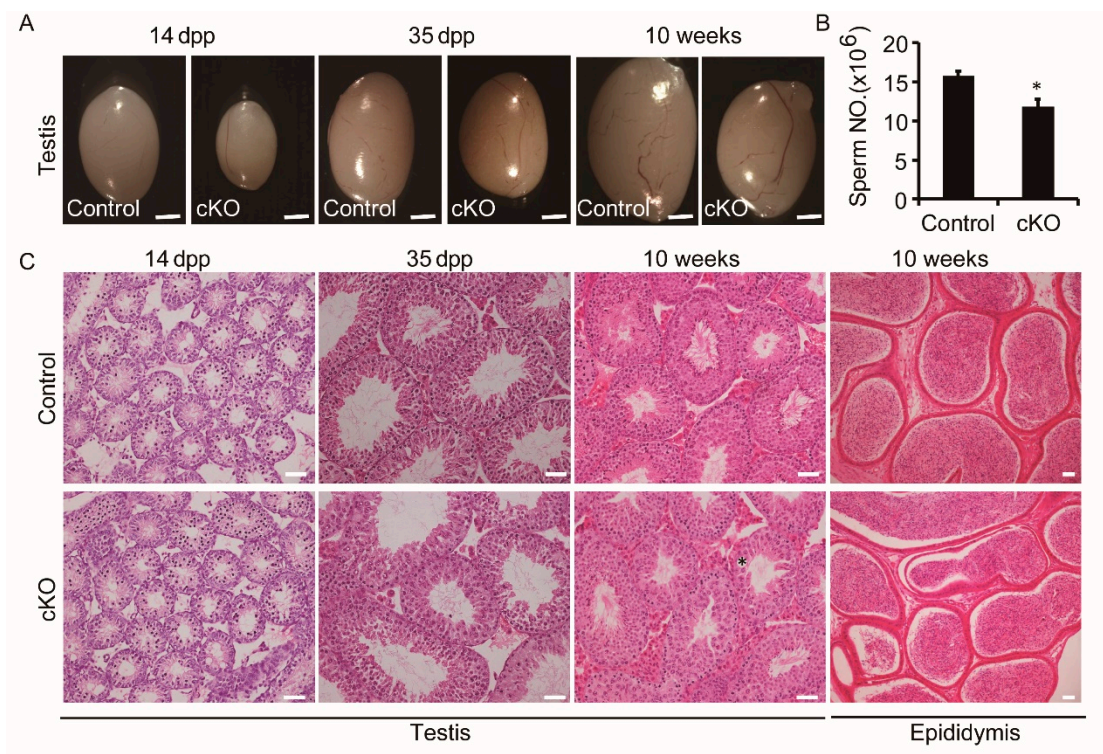


**Figure S1.** High purity of the isolated germ and Sertoli cells. The purity of isolated germ and Sertoli cells was determined by comparing mRNA levels of cell-specific genes (*Sox9* for Sertoli cells and *Ddx4* for germ cells) using real-time PCR. The mRNA levels were normalized against *Gapdh*, and those for cell specific genes in the isolated cell subsets were arbitrarily set as 1. Data were presented as mean  $\pm$  S.E.M.



**Figure S2.** Decreased testis size and weight in prepubertal and adult *Ddb1* cKO mice. (A) Representative image of testes from control and cKO mice. Scale bars = 2 mm. (B) Sperm number in epididymis from 10 weeks control and cKO mice. Data were presented as mean $\pm$ S.E.M. \* $p < 0.05$ , Student's *t*-test; (C) H&E staining of the testes from control and cKO mice. Black star indicates vacuolated seminiferous tubules. Scale bars = 50  $\mu$ m.